

Audio-Visual System User Guide: Engineering Building B, 2B.020 Blended Lecture Theatre

Theatre Overview:

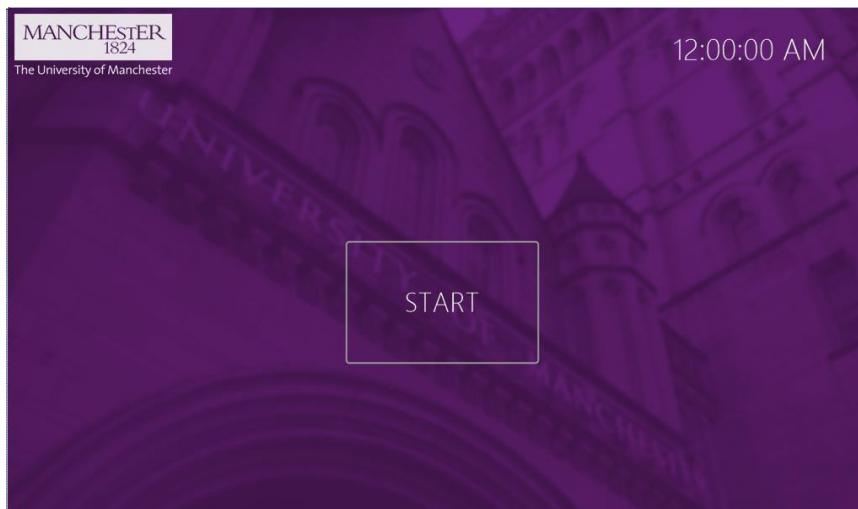
This theatre features dual projection facing the front wall and seven student group screens which are large "video walls" positioned around the space. The projectors can display independently selected sources or a duplicate source. The video walls can be controlled to display a selected source across all seven or to display a local Solstice system, unique to each which can be connected to wirelessly for student group working.

The theatre is also enabled with two control positions. One wall-mounted at the front of the space and another towards the rear housed on an AV cabinet. Both control touch-screens have identical functionality and this allows flexibility when moving around the theatre.

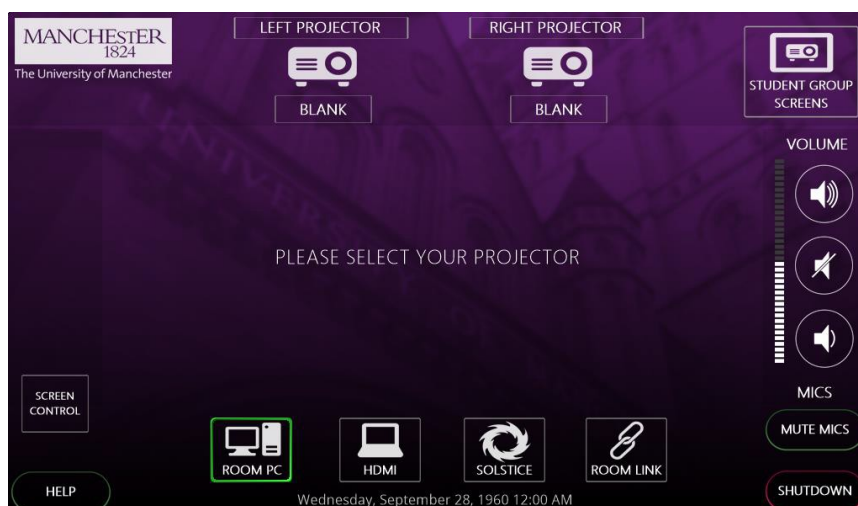
Control Touch-Panels

As above, there are two control-touch panel interfaces which can be used to power the system on and off, select sources for the various displays and control the system volume.

If the panels are blank then they are in standby, touch them once to wake them. When the system is powered down, you will be presented with this initial screen. Press the start button to power the system on.



You will be taken to the main control page. From this page you can select which sources you would like to display, control volume and mute the microphones. There are four available sources, ROOM PC, HDMI, SOLSTICE and ROOM LINK. The first time a source is selected the user will be prompted to select a projector on which to view it. Pressing the desired projector will switch the projector on and lower the screens. Repeat the process for the desired source for the second projector.



Sources:

ROOM PC

When this is selected, the projector will display the PC that is housed in the AV cabinet and accessible via an aperture at the front. Control of the PC is then via the keyboard and mouse on the surface of the cabinet.

Note-the PC may need to be woken by pressing a button on the keyboard or mouse.

HDMI

A HDMI input plate is wall-mounted at the front of the space with one of the control touch-panels. Connect your device with a HDMI cable and select this source to use.

Solstice

Mersive Solstice wireless collaboration and display system. On selecting this source, the chosen screen will display the connection details and security code needed to do this. For more details on how to use the Solstice system visit: www.solstice.manchester.ac.uk

Room Link

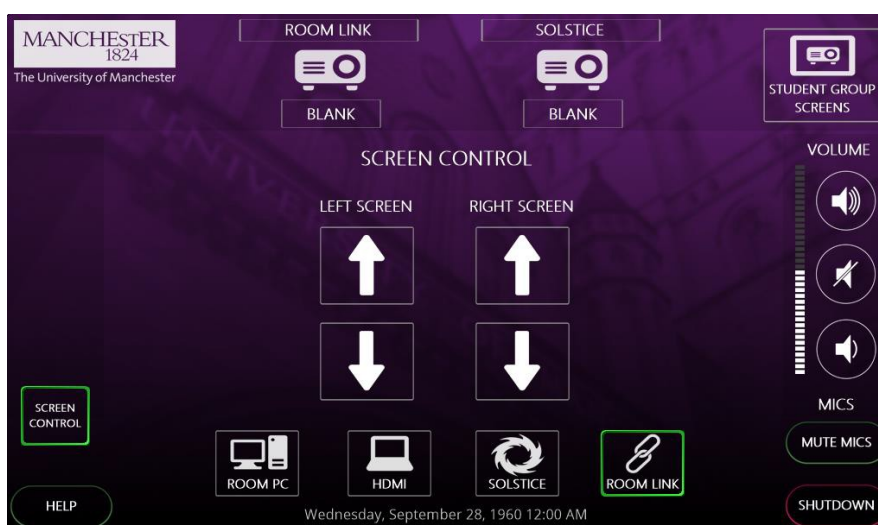
This system has the ability to display content from other teaching spaces for use in overflows and linking spaces together. This cannot be configured by the user however and must be requested from Media Services.

Volume Control:

To control the volume of your selected source, use the volume up, down and mute buttons to the right-hand side of the touch-panel. The microphones within the space can also be muted by pressing the MUTE MICS button.

Projection Screens Control:

Selecting the SCREEN CONTROL button towards the bottom left of the user interface will display the following pop-up which allows the user to raise or lower the screens during a session. The projectors should be blanked by selecting the BLANK button under the projector icons when doing this. When the system is fully turned on or off the screens will automatically lower and raise accordingly.



Student Group Screens:

Pressing the STUDENT GROUP SCREENS button at the top right of the user interface will display the following pop-up allowing the user to choose what they display. Five source choices are available, ROOM PC, HDMI, MAIN SOLSTICE and ROOM LINK will display those sources on the screen as with the projectors. Choosing LOCAL SOLSTICE will display a different Solstice device on each screen allowing connection by a student group working on each. Pressing the X at the top right corner of the pop-up will return the main screen.



System Shutdown:

Once finished using the system, please remember to shut it down to conserve power usage and prolong the life of the AV equipment. To shut the system down, press the SHUTDOWN button at the bottom right corner of the touch-panel. You will then be presented with the following screen. Pressing the green YES button will power the system down and return it to the start screen. If you pressed SHUTDOWN in error and wish to continue working with the system, press the red NO button.



Voice Reinforcement:

The theatre includes four portable microphones, two lapel and two handheld. The microphones can be muted via the control system button if desired.

Instructions for operating the microphones are available on the following pages:

Portable Microphones:



There are two handheld and two lapel microphones in the charging dock on the AV cabinet at the rear of the theatre

Switching the handheld transmitter on and off

i After switch-on, the receivers and transmitters will take approx. 10 seconds to establish the radio links.

To switch the handheld transmitter on:

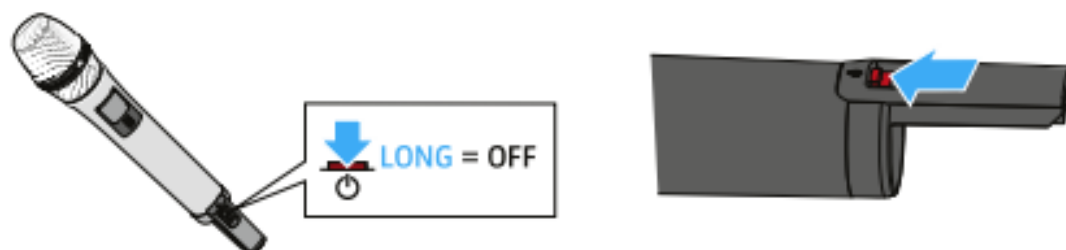
- ▶ Short-press the **ON/OFF** button in the direction of the transmitter body.



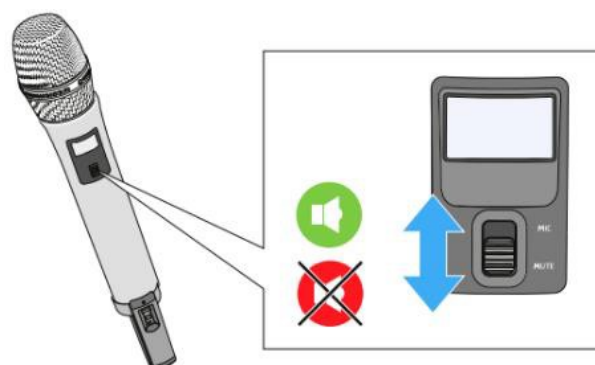
The home screen appears on the display panel (see „Displays on the display panel of the SL Handheld DW“). The status LED indicates the current status of the receiver (see „Meaning of the status LED on the handheld transmitter“). The radio link to the last paired receiver is established automatically as soon as the receiver is switched on.

To switch the handheld transmitter off:

- ▶ Press the **ON/OFF** button for approx. 3 seconds in the direction of the transmitter body.



Muting the handheld transmitter:

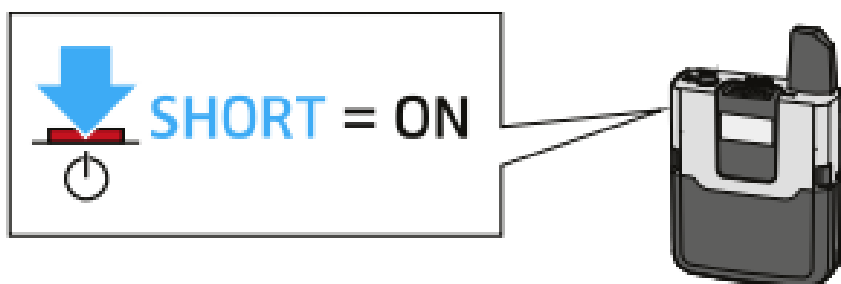


Switching the bodypack transmitter on and off

i After switch-on, the receivers and transmitters will take approx. 10 seconds to establish the radio links.

To switch the handheld transmitter on:

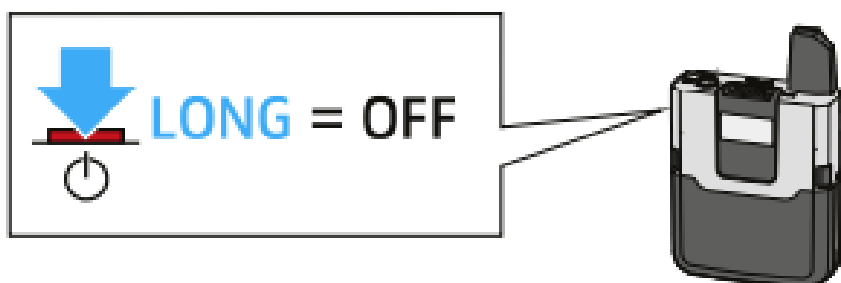
- ▶ Short-press the **ON/OFF** button.



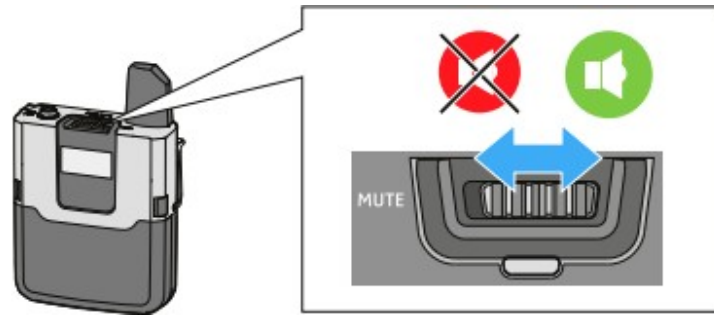
The home screen appears on the display panel (see „Displays on the display panel of the SL Bodypack DW“). The status LED indicates the current status of the receiver (see „Meaning of the status LED on the bodypack transmitter“). The radio link to the last paired receiver is established automatically as soon as the receiver is switched on.

To switch the handheld transmitter off:

- ▶ Press the **ON/OFF** button for approx. 3 seconds.



Muting the lapel transmitter:



Reporting faults and getting support:

Should you experience a fault with this system, please report to the Media Services Helpdesk via internal extension 52521 or by contacting mediaservices@manchester.ac.uk