

How to order your Uniform

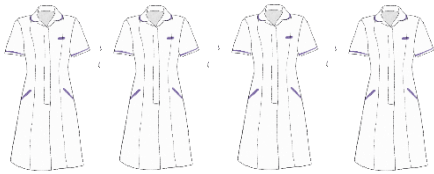
Ordering Online



1. You will need a tape measure.
Take **exact** measurements (Alexandra will take into account additional space you'll need for movement)
2. You'll also need to know your usual high street sizes

Choose from:

You are given **4 sets** of uniforms from a combination of tunics, dresses and trousers!



or



or



or



Additional Info

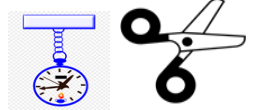
If you have any special requirements, such as **needing a** long sleeve uniform (e.g for a religious reason), this is a bespoke order and you will need to email denise.richardson@manchester.ac.uk who will process your order.



You will also need some flat black shoes for wear in practice; examples of the type of shoe you need can be found on the Alexandra website, but you can purchase your shoes from any retailer.

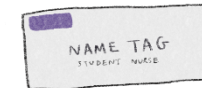


You may also find it useful you purchase a fob watch with a second hand and a pair of surgical quality blunt-end scissors



Picking it up

1. You should complete your uniform order by **Thursday 30th September**
2. You will be asked to come onto campus to collect your uniforms and will be sent a date and timeslot; it is expected that this will be mid-October
3. You will also pick up your name badge at the same time as your uniforms (Don't worry, you don't need to do anything, the University will order your name badge for you)



Exchanges:

If any pieces of your uniform do not fit correctly or you need to purchase additional items (at your own expense), you should report this to BMidwif@manchester.ac.uk who will advise you of the process you need to follow

