

SUMMARY INFORMATION SHEET
APHASIA-FRIENDLY VERSION



The University of Manchester



Salford Care Organisation
Northern Care Alliance
NHS Foundation Trust

Full title of Research: Immune Mediated Pathways and Cognitive Trajectory
Short title: Stroke-IMPACT study

Summary Information Sheet

SUMMARY INFORMATION SHEET
APHASIA-FRIENDLY VERSION

We would like to invite you to take part in a research study that will assess if **inflammation** in the brain can affect recovery after **stroke**



We will test if changes in **cells** in our immune system

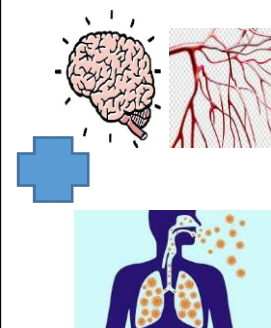


can lead to **cognitive decline** in later years.

What is the trial about?

We know that having a stroke can double (x2) a person's risk of developing cognitive decline or dementia in later years.

We think that high levels of inflammation in the brain and blood vessels, along with infection after stroke may be a factor



We are asking people who have had a stroke to take part in our study.

Participants will have assessments of cognitive function,



lifestyle and general health



at regular intervals for 1/2 years

We will also take blood samples to measure inflammation and immune function



and some people will undergo additional brain scans.



SUMMARY INFORMATION SHEET
APHASIA-FRIENDLY VERSION

What will it mean for me?

If you are happy to take part, you will be asked to sign a consent form. If you are unable to do this, someone can sign it on your behalf.



The researcher will conduct the following assessments:

Visit 1 – This will be performed while you are in hospital

Will record information about you including your age, sex, details about your stroke, current medications and other health issues.



The researcher may find this information in your medical records.



You may also be asked to complete a short test to assess your memory and problem solving skills.



Visit 2 – This will be performed within 4 days of your stroke onset

The researcher will collect a blood sample 50ml (10 teaspoons).



You may also be asked to undergo a Magnetic Resonance (MR) brain scan while you are in hospital or within 30 days of your stroke. You DO NOT have to have this if you don't want to.



SUMMARY INFORMATION SHEET
APHASIA-FRIENDLY VERSION

Visit 3 – This will be performed approximately 6 months after your stroke

- The researcher will arrange for you to attend Salford Royal Hospital.
- The visit will last approximately 3 hours.
- The assessment will include a further blood test (as above).
- You will be asked to complete number of questionnaires to assess your health, changes to your lifestyle and memory.
- The researcher will also perform a physical examination including blood pressure, walking, coordination and recovery from stroke.

The researcher will explain each test and you can stop at any time if you wish.

You will be invited to repeat this assessment as follows:

Visit 4 - performed approximately 18 months after your stroke

Visit 5 - performed approximately 2 ½ years after your stroke

Visit 6 - performed approximately 3 ½ years after your stroke

If you have agreed to undergo additional MR brain imaging, this will be performed at Salford Royal Hospital OR Manchester Clinical Research Facility. The TWO additional scans will be timed to coincide with Visit 3 and

Visit 5 above.

Completion of Visit 6 will end your study participation.

For more information, please see full information sheet.