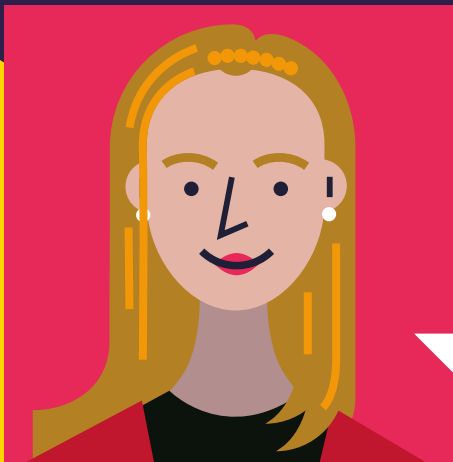


SUPPORT FOR ESTRANGED STUDENTS

Preparing your application

If you're under 25 and studying without the support of a family network (also known as 'estranged') you may be able to access additional support.

Estrangement can happen for all kinds of reasons, including a relationship breakdown with parents or if both parents have passed away. If this sounds like you, explore this short guide and get the help you need to start your undergraduate journey.



MEET EMMA

Hello, I'm Emma and I'm the University's dedicated contact for estranged students. Get in touch with me for application advice and information about support services available throughout your student experience.

Email me: elk@manchester.ac.uk



APPLICATION FORM

Tell us about your circumstances in your application form or ask your referee to include details in their UCAS reference.

Anything you share will be in confidence and you'll only hear from us if we need any more details.

www.manchester.ac.uk/contextual



ANNUAL SUPPORT

If you're under 25 and have been estranged from your family for more than six months, you could receive an annual grant of £1,000 during your undergraduate course.

www.manchester.ac.uk/finances



OUR PROMISE

We're proud to have made a Stand Alone pledge, which outlines our commitment to developing support for estranged students and help to make the move to university a little bit easier.

www.thestandalonepledge.org.uk/about

THE MANCHESTER SPIRIT

At Manchester, we're proud to do things differently. Our diverse community of students is encouraged to learn without boundaries and step up and lead to create a fairer, better world.

www.manchester.ac.uk/yourfuture