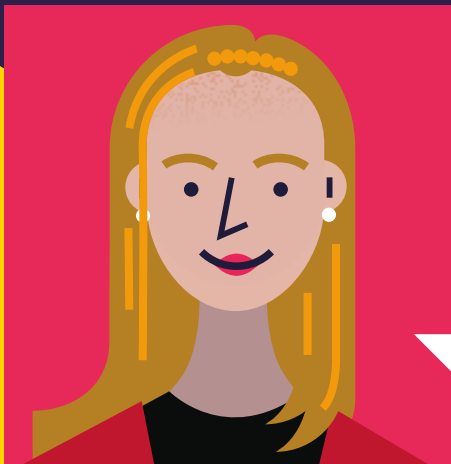


# SUPPORT FOR CARE EXPERIENCED STUDENTS

## Preparing your application

If you are under 25 and have lived in Local Authority care at some point in your life, we can help you to access higher education and join our community at Manchester.

Explore this short guide and get the help you need to start your undergraduate journey.



## MEET EMMA

Hello, I'm Emma and I'm the University's dedicated contact for care experienced students. Get in touch with me for application advice and information about the support services that are available during your entire student experience.

Email me: [elk@manchester.ac.uk](mailto:elk@manchester.ac.uk)



## TICK THE BOX

Tick the 'care leavers' box on your UCAS application form so we can consider you for additional University support.

You could be eligible for a contextual offer of up to two grades lower than our standard offer on selected courses.

[www.manchester.ac.uk/contextual](http://www.manchester.ac.uk/contextual)



## ANNUAL SUPPORT

If you're under 25 and have experienced public care for three months or more since the age of 11, you could receive an annual grant of £1,000 from the University during your undergraduate studies.

[www.manchester.ac.uk/finances](http://www.manchester.ac.uk/finances)



## OUR PROMISE

We're proud to have signed the Care Leaver Covenant – our public promise to provide support for care experienced students and help make the move from Local Authority care to living independently a little bit easier.

[www.manchester.ac.uk/care-covenant](http://www.manchester.ac.uk/care-covenant)

## THE MANCHESTER SPIRIT

At Manchester, we're proud to do things differently. Our diverse community of students is encouraged to learn without boundaries and step up and lead to create a fairer, better world.

[www.manchester.ac.uk/yourfuture](http://www.manchester.ac.uk/yourfuture)