

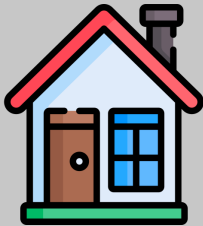
## National Confidential Inquiry into Suicide and Safety in Mental Health (NCISH)

27%  
people

who died by **suicide** had contact with **mental health services** in the **12 months** before death

Our findings suggest...

### If you live alone



If you live alone, your care should address both your **health** and **social** risks

### Ethnic differences



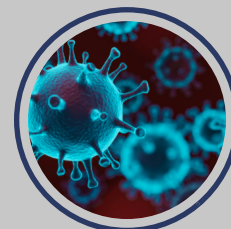
Suicide risk **differs by ethnic group**, and your care should consider these differences

### Young people



You might feel like you are facing a **range of complex problems**. You should not be excluded from services because of this

### Mental healthcare during COVID-19



Services need to support people who are **anxious, isolated, or lonely**. Your usual care should be disrupted as little as possible