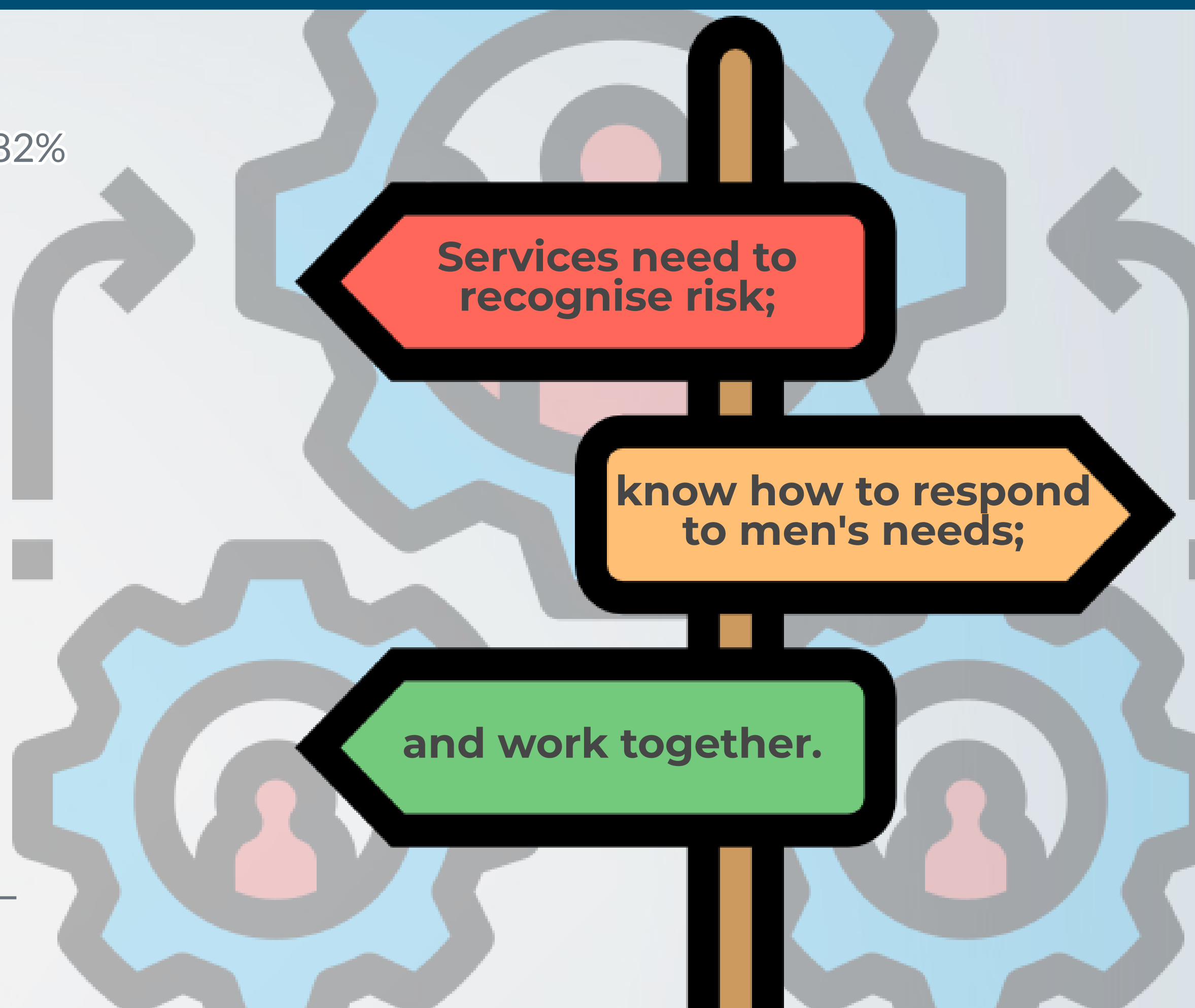
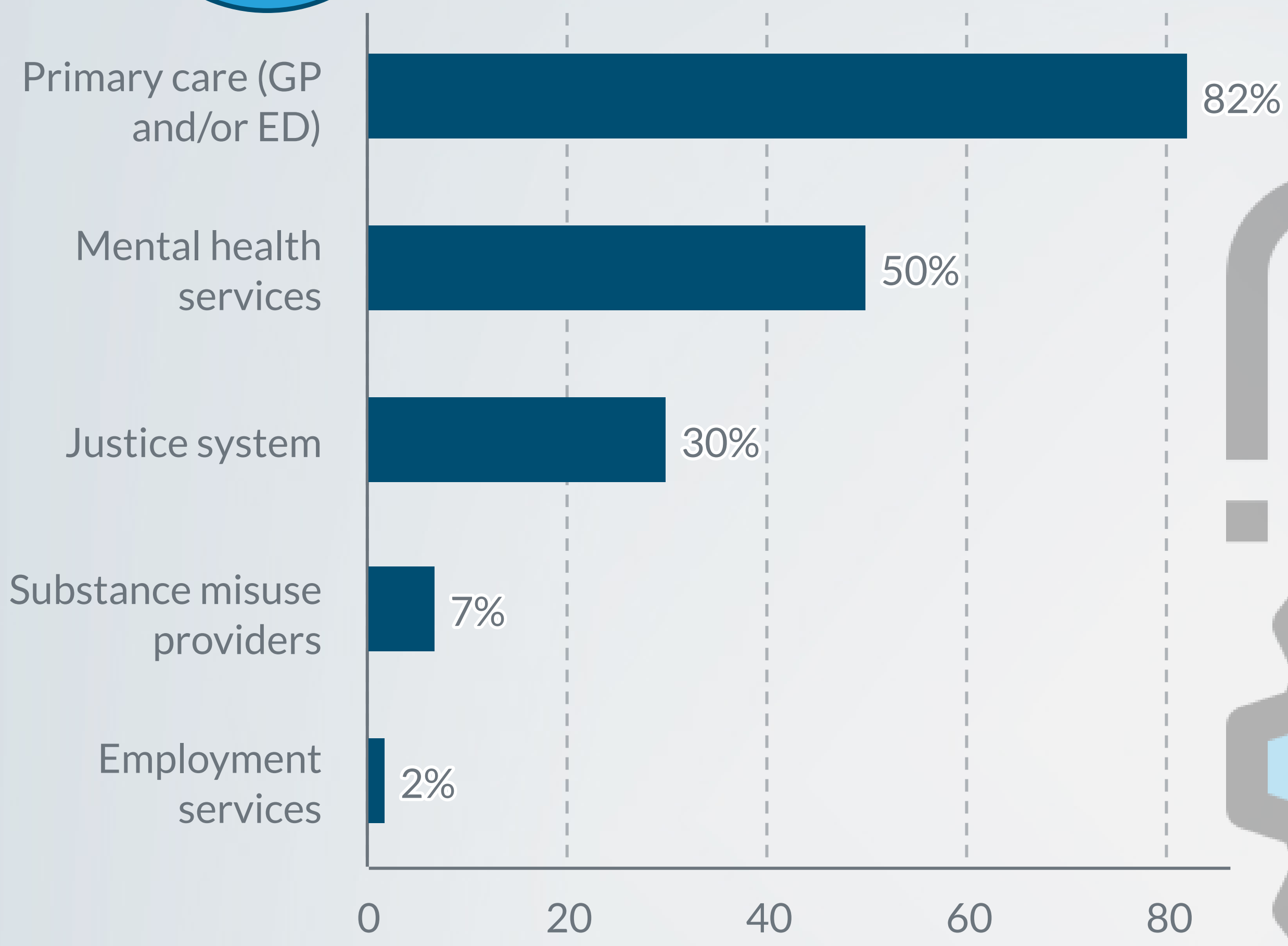


# Suicide by middle-aged men

(deaths occurring in 2017)

**91%**

of men aged 40-54 had service contact



## Higher rates of key risk factors



**66%**

Mental health diagnosis



**52%**

Physical health condition



**49%**

Alcohol and drug misuse



**34%**

Bereavement



**11%**

Suicide-related internet use

**57% experienced economic adversity**



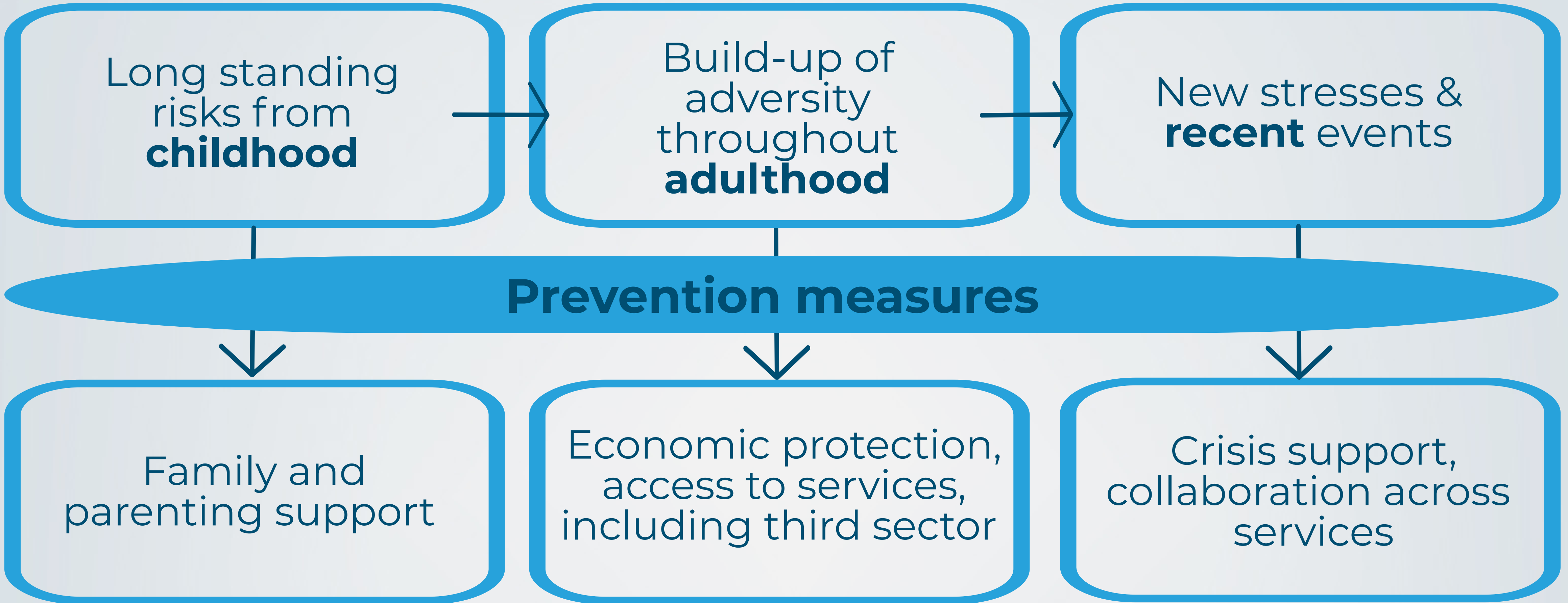
Unemployment, financial or housing problems common

**Recent adverse life events experienced by many**



Relationship break-up, problems at work, social isolation

## Cumulative risk



## Opportunities for prevention



**Adapt interventions to suit men's needs**



**Safer prescribing in accordance with national guidelines**



**Recognise risks after self-harm**



**Bereavement support tailored to men**



**Improved online safety in line with current initiatives**