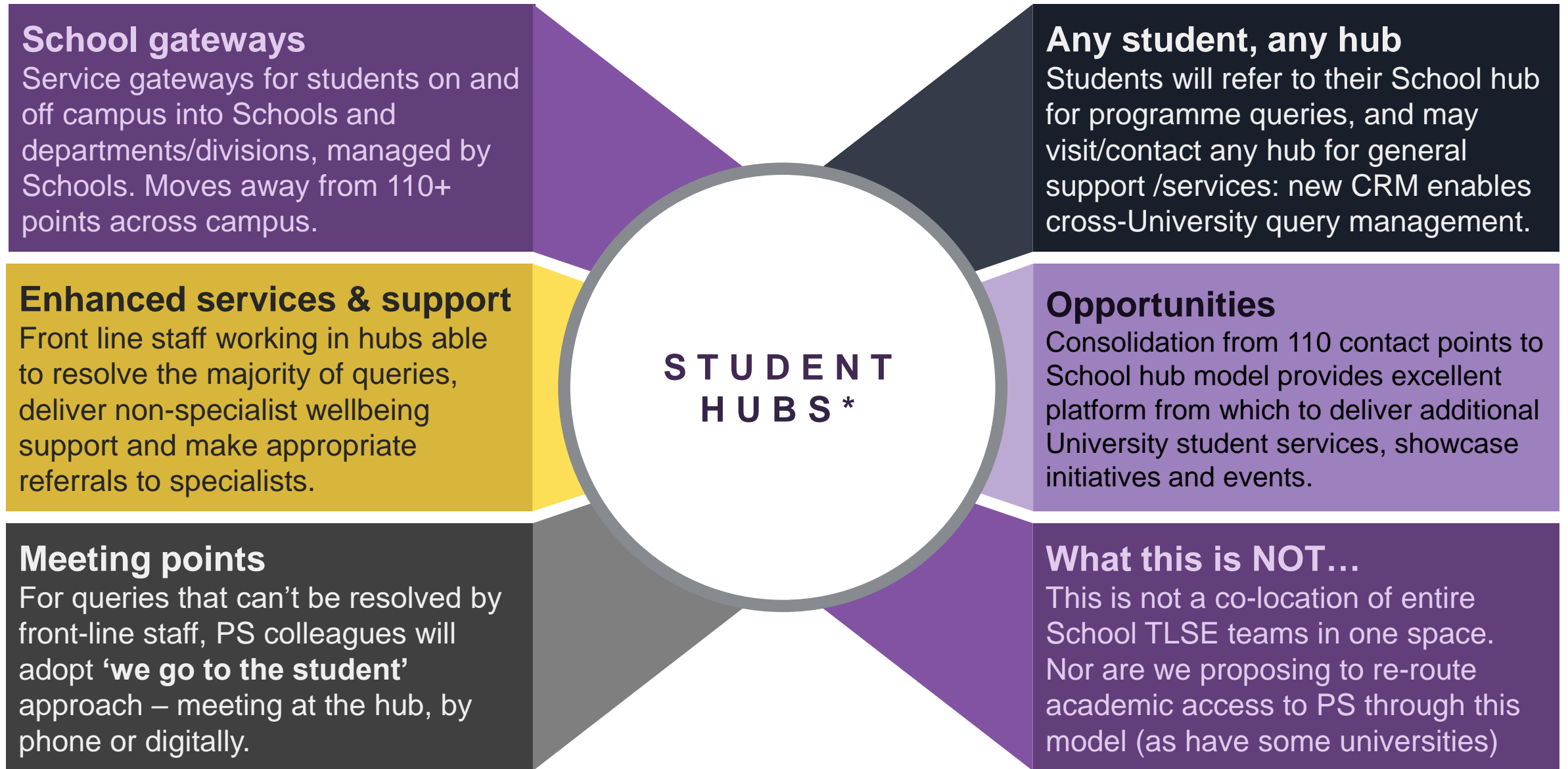


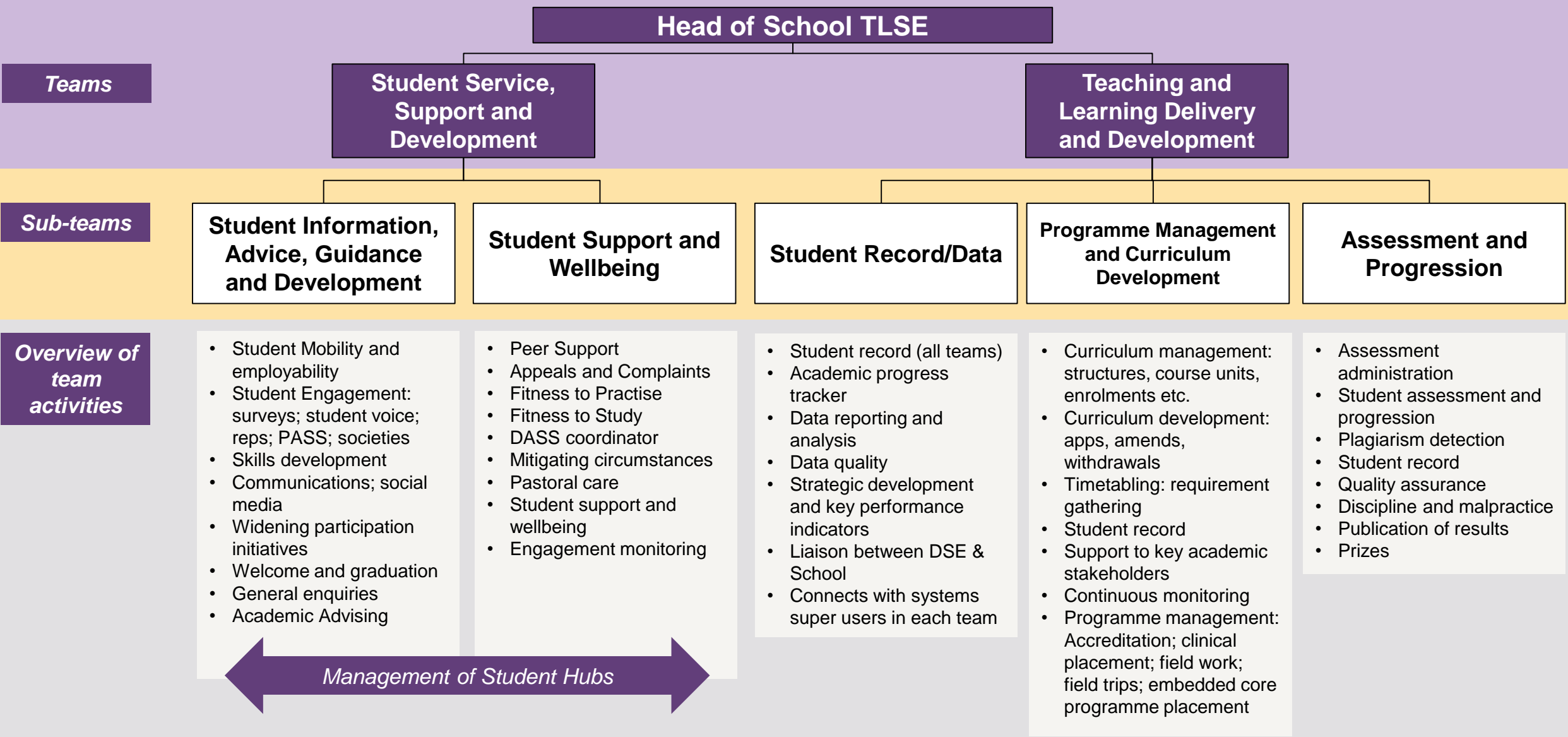
What we are asking you to do...

- Consider and discuss these developing proposals within your local areas
- Provide your feedback via our online form as soon as possible and no later than 31 March 2021:
 - What benefits can you see from the developing proposals?
 - Are there any significant challenges/risks that we are so far missing?
 - Are there further opportunities to be realised from the developing proposals?
- **Next steps:** Your feedback will be used to further shape our new organisational design, as demonstrated in earlier phases of the programme
- Engagement will continue throughout the programme, your local Student Experience leaders will keep you abreast.

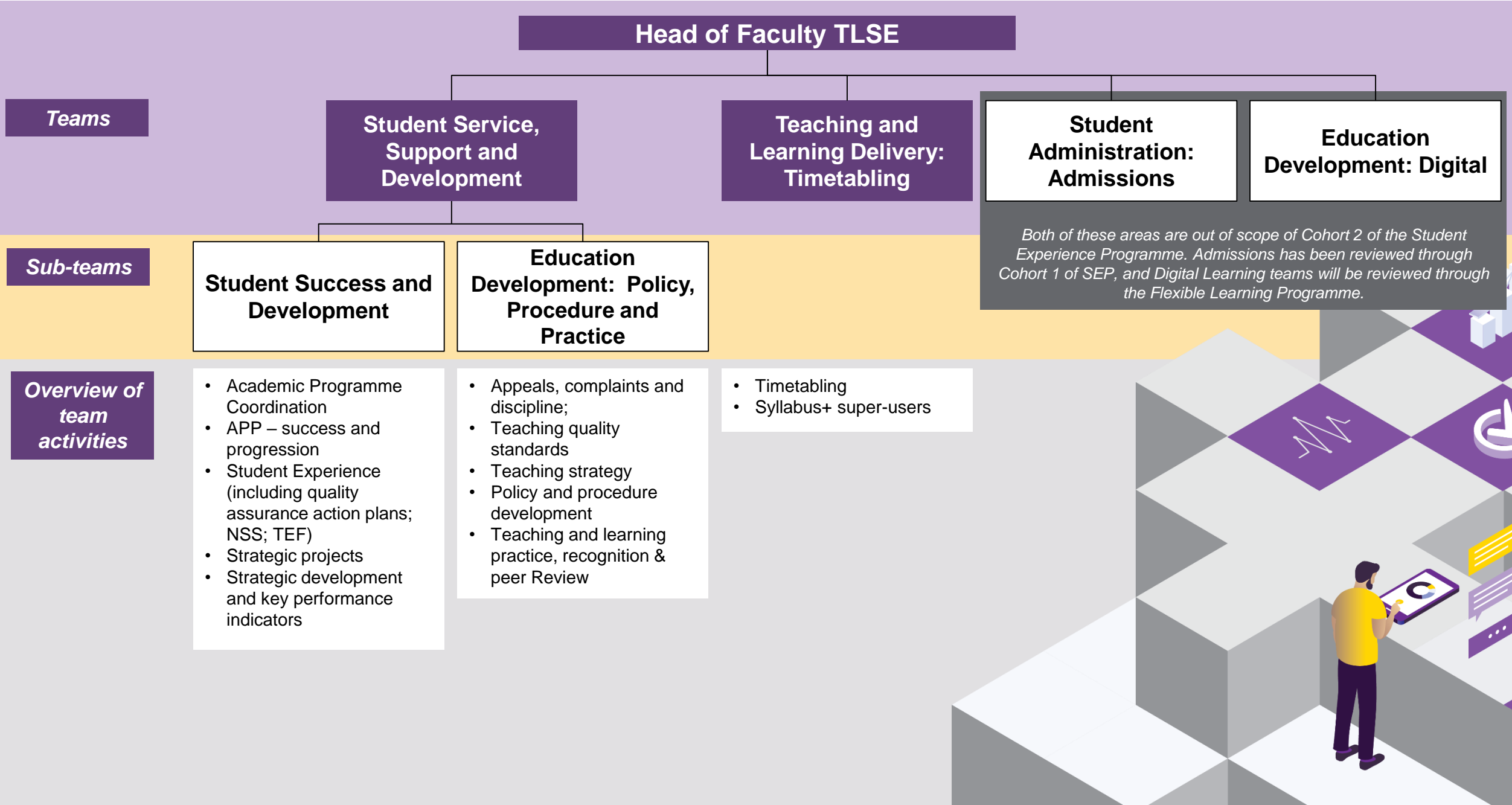


*Interim title, suitable signposting terminology to be determined via engagement

Developing School TLSE structure



Developing Faculty TLSE structure



Developing DSE Student and Academic Services structure

Teams

Student Success & Development

- Careers Service including internship programme
- Student volunteering
- Peer support
- Coordination of welcome, induction and transition
- Stellify programme and awards
- Student success elements of APP

Education Development

- Quality framework including student voice and surveys
- Policy and procedure development and management
- Institute of Teaching and Learning
- Digital education
- Placeholder for other aspects of flexible learning

Teaching & Learning Delivery

- Scheduling and coordination of teaching timetable
- Scheduling and implementation of assessment timetable
- UCIL operations
- UMW operations
- Appeals and complaints including liaison with OIA

Business Improvement Support and Delivery

- Student systems support and ownership
- Exploitation of system functionality to support students and staff
- Process improvement
- Management of the student record including data quality
- Student 360

Student Administration

- Student admissions
- Student finance
- Student immigration advice and compliance
- Service delivery including registration and 'start of year'
- Management of institutional datasets

Overview of team activities

Developing DSE Campus Life structure

Teams

Disability Services

Occupational Health

Counselling and Mental Health

Advice and Response

Overview of team activities

UMAC

- Disabled Students Allowance assessments
- Relationship with Student Finance England
- Income generation

DASS

- Assessment and support plans
- Staff training
- Support mitigating circs, exam boards appeals etc.
- Ensure statutory compliance
- Assistive tech and data Management
- Personal Support Worker Service

- Health surveillance
- Management a School referrals
- Applicant assessment for regulated courses
- Ill-health retirement
- Pre- placement assessments
- Mobility or travel
- Health promotion

- Counselling
- Mental Health and Risk Management
- Relationship with Greater Manchester Hub/NHS
- Psychological wellbeing practitioners
- Group and workshop programme
- Staff training

- Conduct and discipline
- Fitness to study
- Preventative wellbeing
- Specialist study mentors services
- Sexual violence and harrassment
- Safeguarding
- Staff training

Developing Faculty PGR structure

Key

■ = Team

■ = Sub team

■ = Overview of team activity

