

Campus Solutions 9.2 Introduction to navigation bar and tile navigation

Using the new home view

As part of the October 2020 upgrade to Campus Solutions, users should use the new home view. It will help you navigate the system more quickly and easily.

The new interface is modern and user friendly, using 'tiles' to help you navigate. You can personalise your own view to show the areas you use most often, so you can get to them quickly.

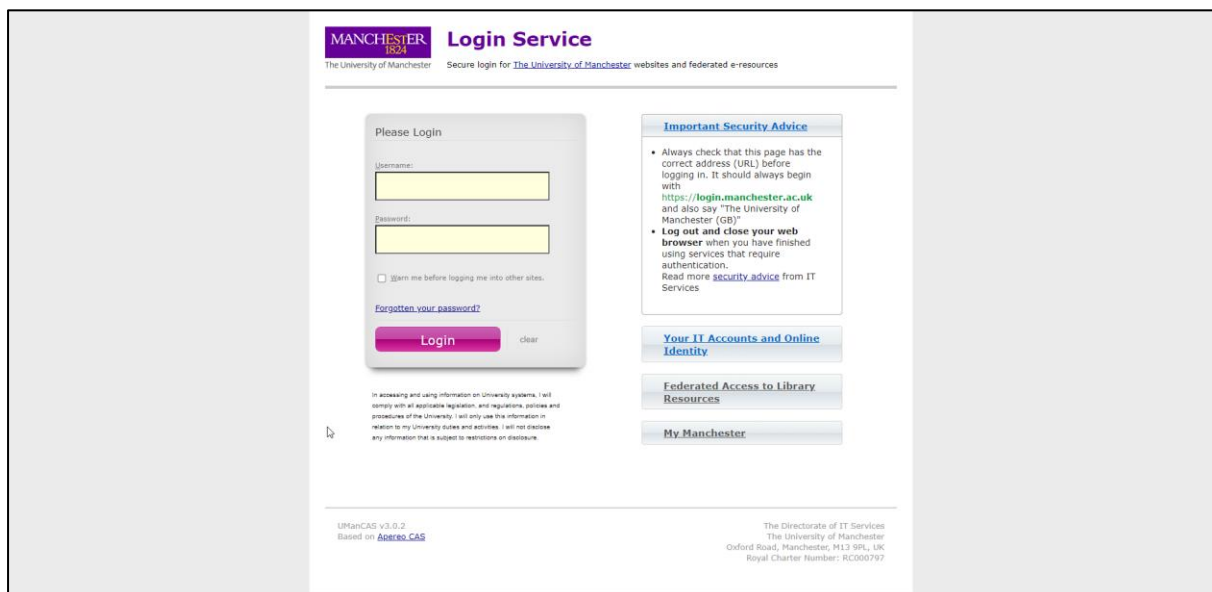
[View the short video](#) to help you use the new home view.

Switching to the new home view will not affect your reports and data within Campus Solutions. It will just change the appearance of your homepage and allow you to customise it so you can navigate more easily.

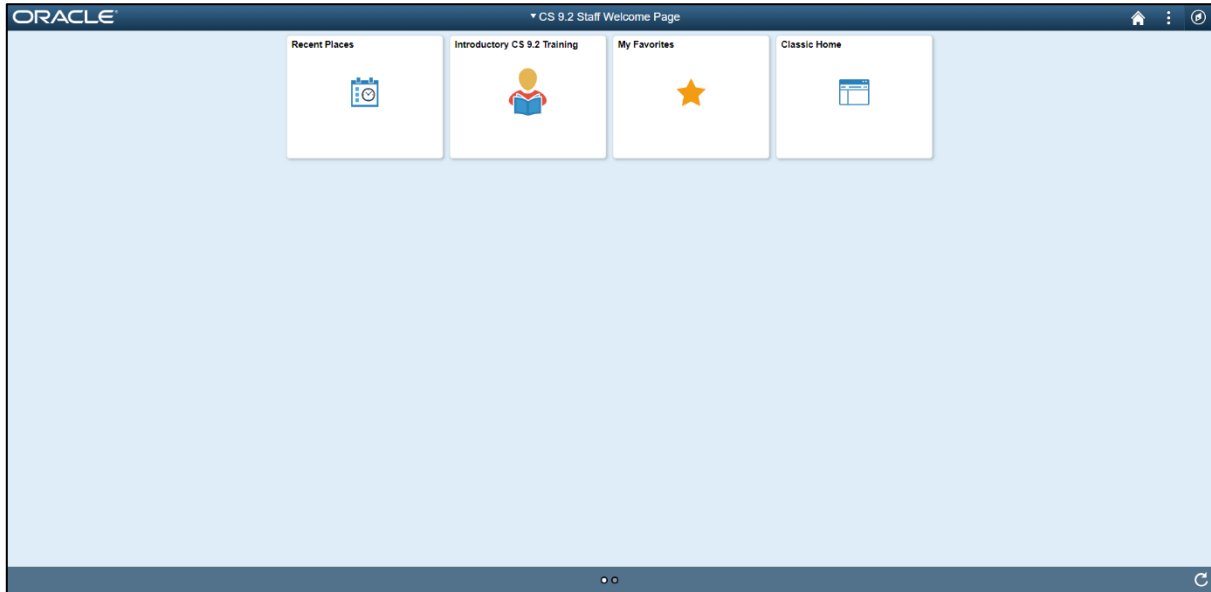
The classic home view will continue to be available until June 2021. However, we suggest you switch as soon as possible, so you have plenty of time to learn how the new home view works and access any support you need before the classic home view is switched off.

For those of you who need to get started immediately, you can still navigate and use Campus Solutions as you have been doing. The screenshots below show the process you should go through.

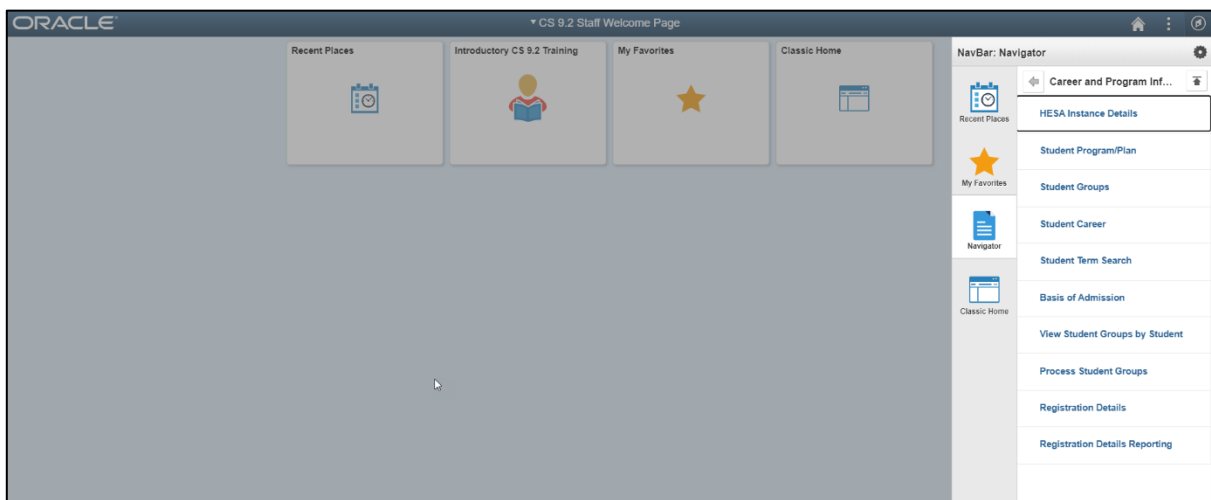
Using the classic home view



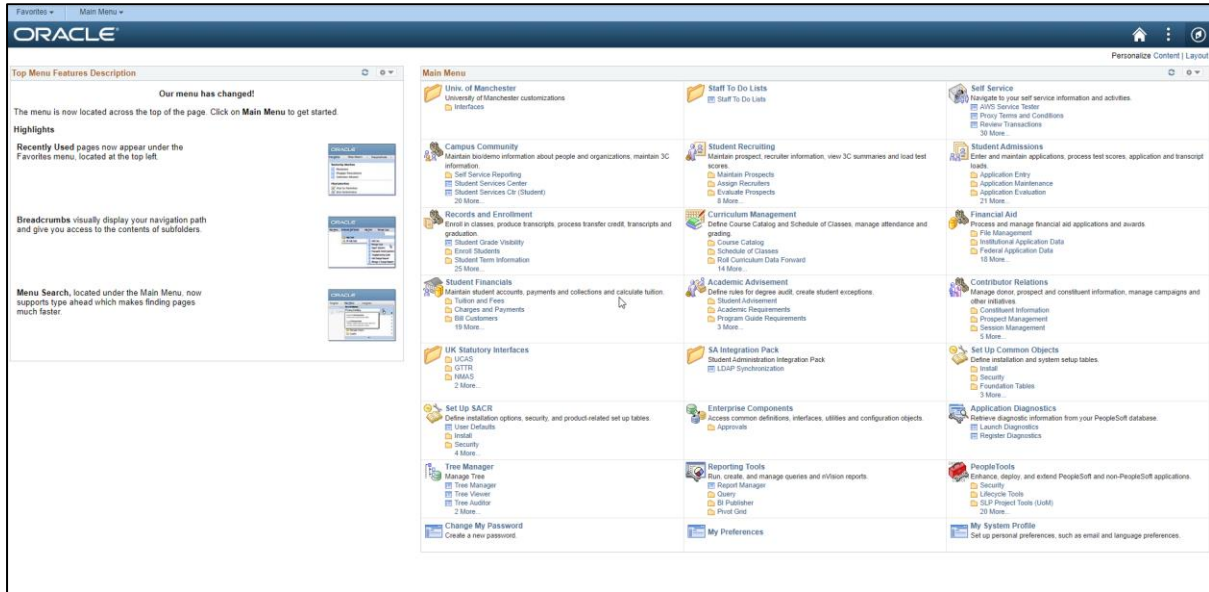
1: Once you click the link you will be presented with the usual log in page.



2: You will be presented with the new and improved home view with four basic tiles.



3: From the new home view you can navigate using the nav bar, as discussed in the training video.



4: If you need to get straight to work and watch the training video a little later, you can change back to the classic home view whenever you like by clicking the Classic Home tile in the new home view.

Make sure your browser is updated

If you have any problems using Campus Solutions 9.2, it might be because your browser needs to be updated. Campus Solutions 9.2 works with the following browser versions:

Desktop Browsers		Mobile Browsers	
Apple Safari	12	Apple Safari Mobile	Apple iOS 11, 12
Google Chrome	69	Google Chrome Mobile	Google Android 7, 8, 9, 10
Microsoft Edge	79.0.309.71, 42+		
Microsoft Internet Explorer	11		
Mozilla Firefox	62, 60 ESR		

Need some help?

If you have a question about accessing Campus Solutions, please email cs.access@manchester.ac.uk.

If you have a question about student records components, please email cs.records@manchester.ac.uk.