

MANCHESTER
1824

The University of Manchester

POSTGRADUATE PROSPECTUS

2021

A Russell Group university

Welcome to Manchester

If you're considering postgraduate study at Manchester, this prospectus is here to help answer your questions on our programmes, how to submit an application and what you can expect from life at the University.

Explore your subject

For each subject we provide contact details so you can find the most up-to-date information. See p50 onwards.

If you need this information in an alternative format, please call our Student Recruitment Office:
tel +44 (0)161 660 6494

Is Manchester the place for you? Discover more*

Open days and virtual open weeks

Join subject talks, explore campus, meet our people and ask questions to find out what it's like to study here. We'll be running a range of postgraduate study sessions next year. Check our website for the latest dates.

uom.link/pgp-masters-opensdays

uom.link/pgp-research-opensdays

Go online, get connected

Discover more about the University through our online channels.

 www.manchester.ac.uk

 /TheUniversityOfManchester

 /officialuom

 @OfficialUoM

 uom.link/pgp-student-made

Meet us at a local fair

If you live abroad, meet our international team at worldwide events and fairs throughout the year.

uom.link/pgp-overseasvisits

In the UK

We attend a programme of events throughout the year.

uom.link/pgp-masters-meetus

uom.link/pgp-research-meetus

* Please note: at the time of going to print The University of Manchester had ceased on-campus events and visits as part of our safety response to the COVID-19 pandemic. For the latest information on the reopening of campus, please visit our coronavirus information page.

uom.link/pgp-coronavirus

Contents

2	Postgraduate taught study – your guide to taught master's programmes
4	Postgraduate research – your guide to research programmes
6	Choose Manchester – where education is a force for change
8	Follow in their footsteps – brilliant minds from our history
10	Revolutionary research – why Manchester is a powerhouse of innovation
12	Great minds at Manchester – meet members of our research community
14	A first-class career – get inspired by one of our alumna
16	Helping you find your future – explore our specialist careers support
18	Make a difference – give back to society and have a positive impact
22	Campus life – game-changing sports facilities and the Students' Union
26	Access our support – experienced, tailored support teams
28	Get to know our campus – discover landmarks, facilities and favourites
32	Explore the city – the best things to see and do in Manchester
36	Settle into accommodation – your guide to our halls of residence
40	Your doorway to the world – gain international employability
42	Plan your finances – secure the funding you need
44	Studies to suit you – flexible learning options to suit your lifestyle

Our programmes

48	What you can study
50	Explore our programmes
79	Programme directory
94	Entry requirements
96	Manchester connected

taught study

Postgraduate taught courses at Manchester are designed to build the specialist knowledge and skills you need to enhance your employability and tackle the challenges facing the world.

Whether you're an undergraduate, recent graduate or in full-time employment, you'll find a range of learning options and funding opportunities to help you gain an advanced qualification.

Types of postgraduate taught courses

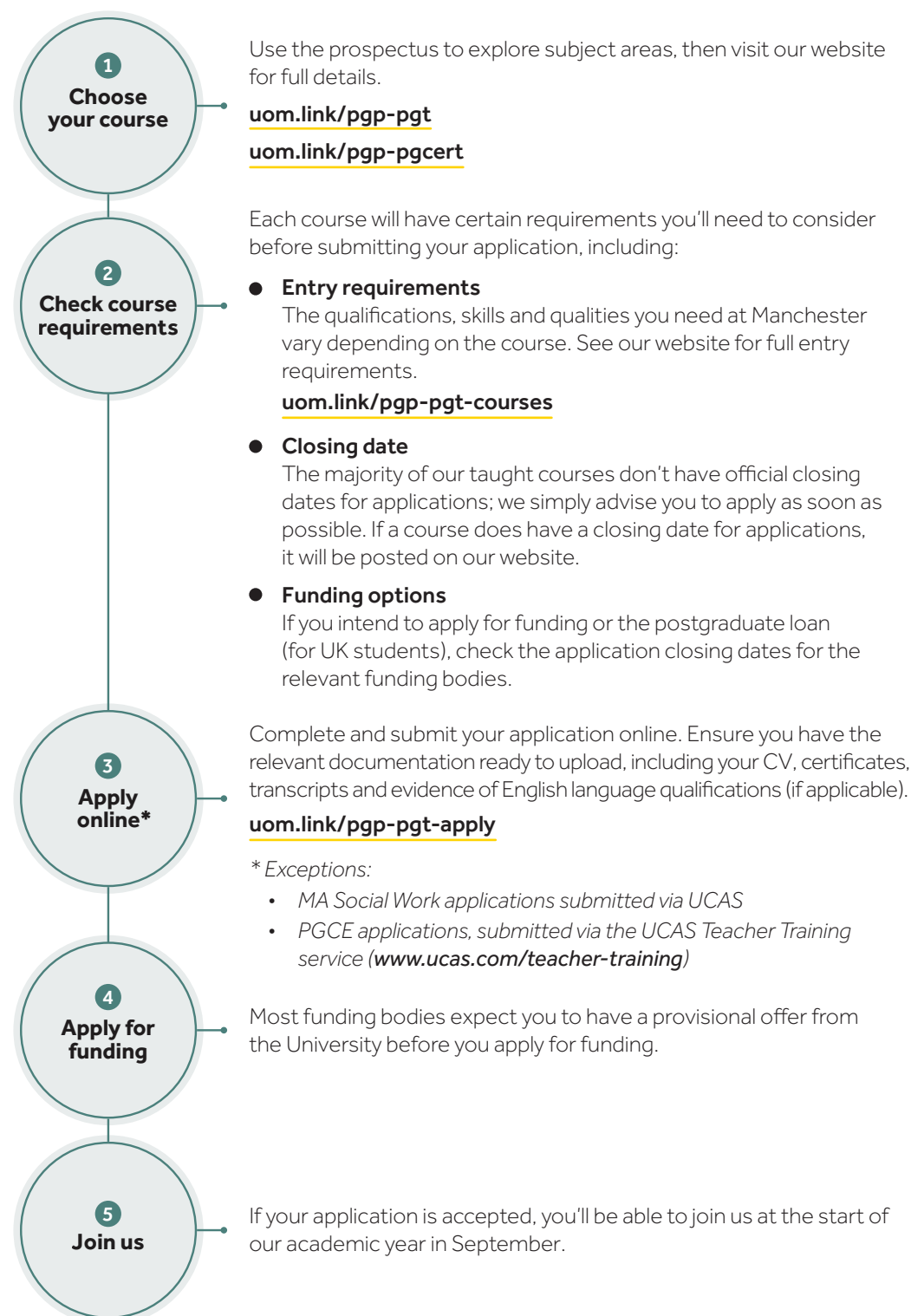
Master's courses

- **Duration**
12 months full-time or 24 months part-time (our Master of Business Administration is 18 months full-time and up to five years part-time).
- **Start date**
Courses usually begin in September, which is the start of our academic year.
- **Learning structure**
Two semesters of lectures, seminars and assessed work, followed by four to five months' research, culminating in an independent project.
- **Qualifications**
 - Master of Arts (MA)
 - Master of Business Administration (MBA)
 - Master of Education (MEd)
 - Master of Science (MSc)
 - Master of Law (LLM)
 - Master of Music (MusM)
 - Master of Research (MRes) – extensive research training and subject-specific advanced learning will prepare you for doctoral research.

Postgraduate certificates (PGCert) and diplomas (PGDip)

- **Duration**
Six months for PGCert or nine months for PGDip, with flexible part-time options available to fit courses in alongside your career.
- **Learning structure**
Expand on your bachelor's degree and enhance your professional experience without submitting a dissertation.

How to apply for a postgraduate taught course



research

As a postgraduate researcher, you'll conduct independent research under the supervision of a senior academic. Join Manchester's thriving research community and you'll contribute to the body of professional knowledge in your specialist area.

Programmes are unique in their learning structure, covering individual or combined elements such as research partnerships, taught units or specific training in research skills.

Types of postgraduate research programmes

- Doctor of Philosophy (PhD)
- Collaborative PhD
- Professional doctorates (various)
- Doctor of Business Administration (DBA)
- Doctor of Medicine (MD)
- Master of Philosophy (MPhil)
- MSc by Research

Visit our website for the full range of postgraduate research programmes available.

[uom.link/pgp-pgr-types](https://www.uom.ac.uk/pgp-pgr-types)

In addition, Doctoral Training Partnerships and Centres For Doctoral Training are Research Council funded opportunities for collaborative work with industry.

[uom.link/pgp-cdt-dtp](https://www.uom.ac.uk/pgp-cdt-dtp)

Why Manchester?

An excellent research community

You'll join the Manchester Doctoral College community, which connects students, supervisors, administrators and external collaborators to funding, facilities and an excellent research experience.

[uom.link/pgp-mdc](https://www.uom.ac.uk/pgp-mdc)

Researcher development programme

Each Faculty offers an extensive researcher development programme of training opportunities to equip you with the skills, attributes and knowledge to thrive in your research and your future career.

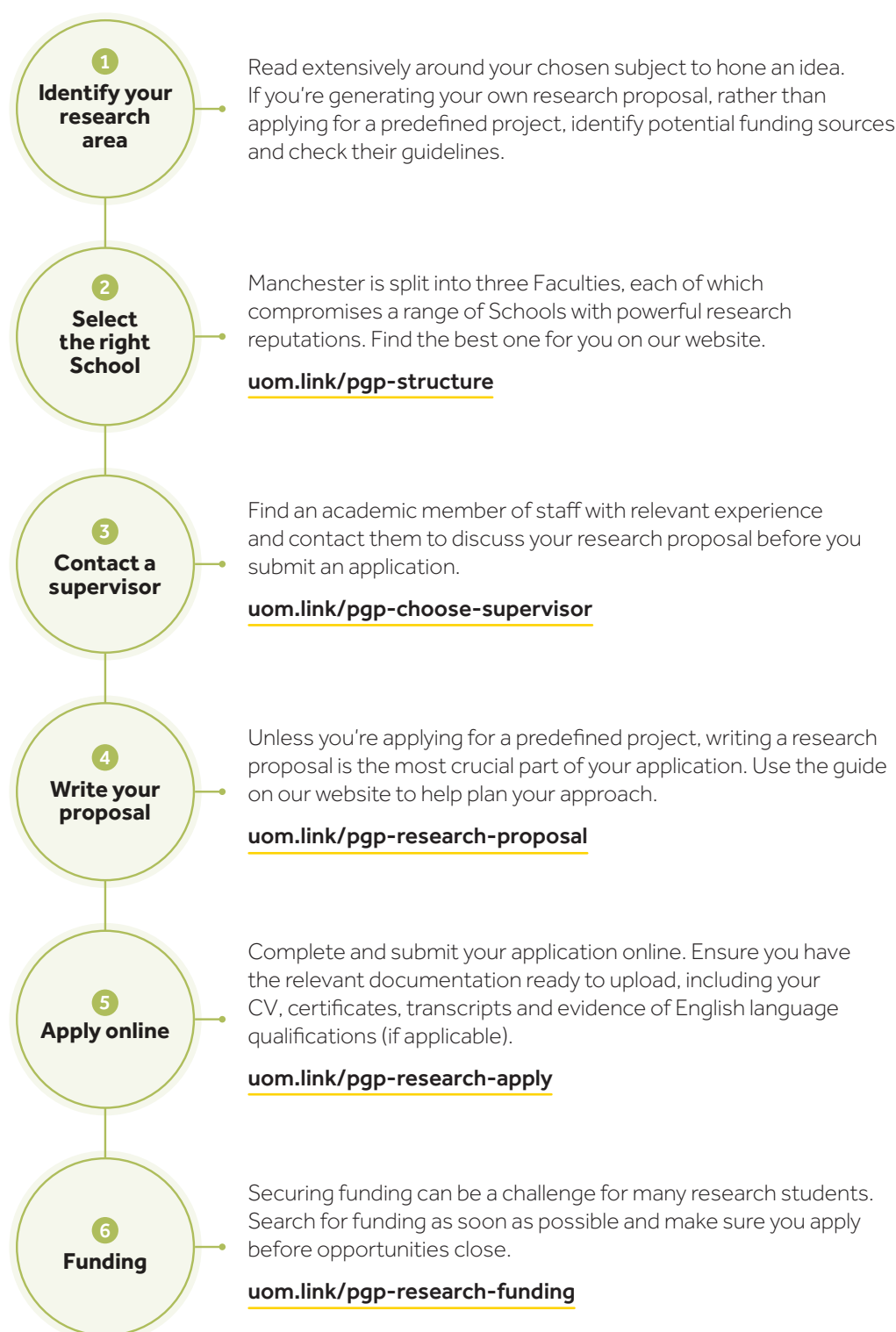
[uom.link/pgp-research-development](https://www.uom.ac.uk/pgp-research-development)

Our innovation company

UMI3, the University-owned innovation company, works with researchers, entrepreneurs, businesses and investors on proposals for inventions developed by our academics, and creates companies and social enterprises based on our current research. Yours could be next.

www.umi3.com

How to apply for a research programme



Choose Manchester

Here at Manchester, we're proud to do things differently. At our University, ideas become actions – and those actions change lives.

We're a truly international institution, welcoming thousands of people from across the world to join our community. We enjoy a global reputation for pioneering research and innovation, which connects us with people and organisations worldwide.

Choose Manchester and you'll experience an education and environment that will set you on a path to become a global citizen and make your mark on the world.



**Top UK city
to live in**
for 2019

Based on *The Economist*
Global Liveability Index



Our societal and
environmental impact is the
best in the UK

According to the *Times Higher Education*
University Impact Rankings 2020



More than
11,000
international students

HESA 2018/19



**The most
targeted university**

by the nation's top
graduate employers

The Graduate Market in 2018, 2019, 2020,
High Fliers Research



**27th best university
in the world**

8th in Europe and 6th in UK

QS World Rankings 2020



**5th in the UK for
research power**

Research Excellence
Framework 2014



University of the year for
graduate recruitment

The Times and Sunday Times
Good University Guide 2020



Four global centres

Dubai, Hong Kong, Shanghai
and Singapore

Follow in their footsteps

Join a community of global innovators and pioneers whose achievements have helped shape the modern world – a place where 25 Nobel Prize winners have worked or studied.

You'll study in an academic environment that helps brilliant thinkers turn inspiration into reality, encouraging enterprise, experimentation and creative thinking.

Here are just a few highlights from our history.



1906

Christabel Pankhurst, who would become a leading figure in the suffragette movement, becomes the first woman to graduate from the University in Law.



1917

Ernest Rutherford becomes the first person to create an artificial nuclear reaction in a laboratory, ushering in a new era of nuclear research.



1904

Catherine Chisholm becomes the first woman to graduate in Medicine from Manchester Medical School. She helped set up the Manchester Hospital for Babies.



1915

William Bragg, while still a research student, becomes the youngest ever winner of the Nobel Prize in Physics.



1945

Ellen Wilkinson becomes Britain's first female Minister of Education. Born in Manchester, Ellen won a scholarship to study at the University and entered politics after graduating.

1974

Jean McFarlane* is appointed as the first Professor of Nursing in the UK by the University and goes on to establish the country's first nursing degree.



1993

Michael Smith, a Manchester PhD graduate, receives the Nobel Prize in Chemistry for his work on DNA engineering.

1957

Bernard Lovell completes the Lovell Telescope, the world's largest steerable radio telescope at the time, at Jodrell Bank.



1948

Freddie Williams and Tom Kilburn successfully run a program on 'The Baby', the world's first digital stored-program computer.



1979

Arthur Lewis, Britain's first black professor, becomes the first black winner of a Nobel Prize in Economic Sciences.**

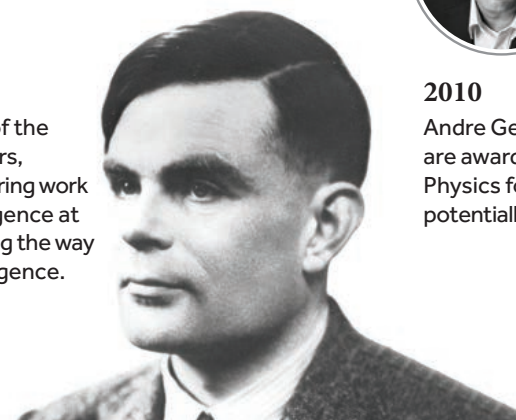
2010

Manchester alumna Dame Sally Davis is appointed as the UK's first female Chief Medical Officer.



1948

Alan Turing, one of the WWII codebreakers, completes pioneering work in machine intelligence at Manchester, paving the way for artificial intelligence.



2010

Andre Geim and Kostya Novoselov are awarded the Nobel Prize in Physics for their isolation of graphene's potentially world-changing properties.



uom.link/pgp-heritage

* Permission to use reproduction of material from the Royal College of Nursing

** Permission courtesy of Keystone/Stringer/Getty

Revolutionary research



The University of Manchester is a powerhouse of research, with a history of world-changing achievements. Our ambitious pursuit of new ideas, greater understanding and discovery informs everything we do.

We take full advantage of our size and breadth, bringing the best minds together from diverse disciplines and forging partnerships with industry to advance society and transform lives across the globe.

Study with us and you'll learn at the frontier of knowledge, where breakthroughs happen.



5th in the UK for research power
(Research Excellence Framework, 2014)



83% of our research rated world-leading or internationally excellent
(Research Excellence Framework, 2014)



£391m total research income



100+ spin-out companies



£800m contributed to the UK economy since 2004

Research beacons

GLOBAL CHALLENGES MANCHESTER SOLUTIONS

Manchester's research beacons are exemplars of our collaborative ethos, bringing together world-leading researchers to deliver innovative solutions to the planet's biggest challenges.

Advanced materials

Graphene, the game-changing 2D material, was first isolated at Manchester. We lead research and commercialisation through our world-class facilities.

Cancer

Our research spans the treatment and detection of a range of cancers. For example, we've helped reduce mortality rates of young people with acute lymphoblastic leukaemia in the UK and India.

Energy

We're helping to deliver a greener future. Our academics developed the tool used by local authorities to set zero-carbon budgets.

Global inequalities

We deliver solutions for a fairer world, from global development to inclusive local growth, poverty reduction to social justice, living conditions to workplace equality.

Industrial biotechnology

We're at the forefront of a bio-industrial revolution, pioneering solutions in areas from medical diagnosis to clean energy.

uom.link/pgp-beacons

Great minds at Manchester

Our researchers are working at the very forefront of their disciplines – respected around the world for their enterprise and discoveries, and for creating positive change in the world.

Here, three members of our research community share their stories.



Professor Danielle George

Professor of Radio Frequency Engineering

My Manchester journey began with an undergraduate degree in Astrophysics, followed by a master's in Radio Astronomy, then a PhD.

One of the benefits of studying at Manchester was access to University institutions, like Jodrell Bank Observatory, where I was able to work alongside my education.

Manchester set me up for a world of amazing experiences, from joining the University's teaching staff and delivering the Royal Institution Christmas Lectures to working with NASA and ESA on instrumentation for exploring the big bang.

In my current role as the University's Associate Vice-President for Teaching, Learning and Students, I'm passionate about sharing my love of research and inspiring the next generation of academics.



Professor Vaskar Saha

Professor of Paediatric Oncology

The University of Manchester is an internationally recognised centre for research into childhood cancers. Over the last two decades, our work has helped to significantly improve survival rates among children in the UK diagnosed with acute lymphoblastic leukaemia (ALL) – the most common childhood cancer.

In many other parts of the world, the outcomes for children with cancer fall behind those of the west. We partnered with the Tata Medical Center in Kolkata, India, to help standardise treatment approaches for children with ALL through a national hub of cancer centres. Since work began in 2014, there has been an improvement in outcomes.

We are now expanding our research to deliver better treatments and gentler cures. Universities are places of learning – and what is the purpose of learning if not to share it?

Professor Duncan Shaw

Professor of Operational Research and Critical Systems

Research at Manchester is distinctive in its cross-disciplinary approach. Here, you're encouraged to connect and collaborate across specialisms to deliver dynamic solutions to global challenges.

I used this approach to create a first-of-its-kind programme of recovery guidance during the coronavirus pandemic. Lots of countries were facing similar challenges, shortly before or after one another – yet there was a gap in sharing COVID-19 knowledge on a large scale.

I established a new joint team from the Alliance Manchester Business School and the Humanitarian and Conflict Response Institute to deliver *The Manchester Briefing*. This weekly publication draws together international learnings from COVID-19 to inform response and recovery planning for nearly 40,000 government and authority members worldwide.

We're the only organisation leading on this kind of global information sharing. It was made possible by Manchester's unique way of doing things differently.



A first-class career

University alumna Julia Hunter, Vice-President of Virgin Galactic, is working to make space travel a possibility. Here, she shares how postgraduate study at Manchester opened up a universe of opportunity.

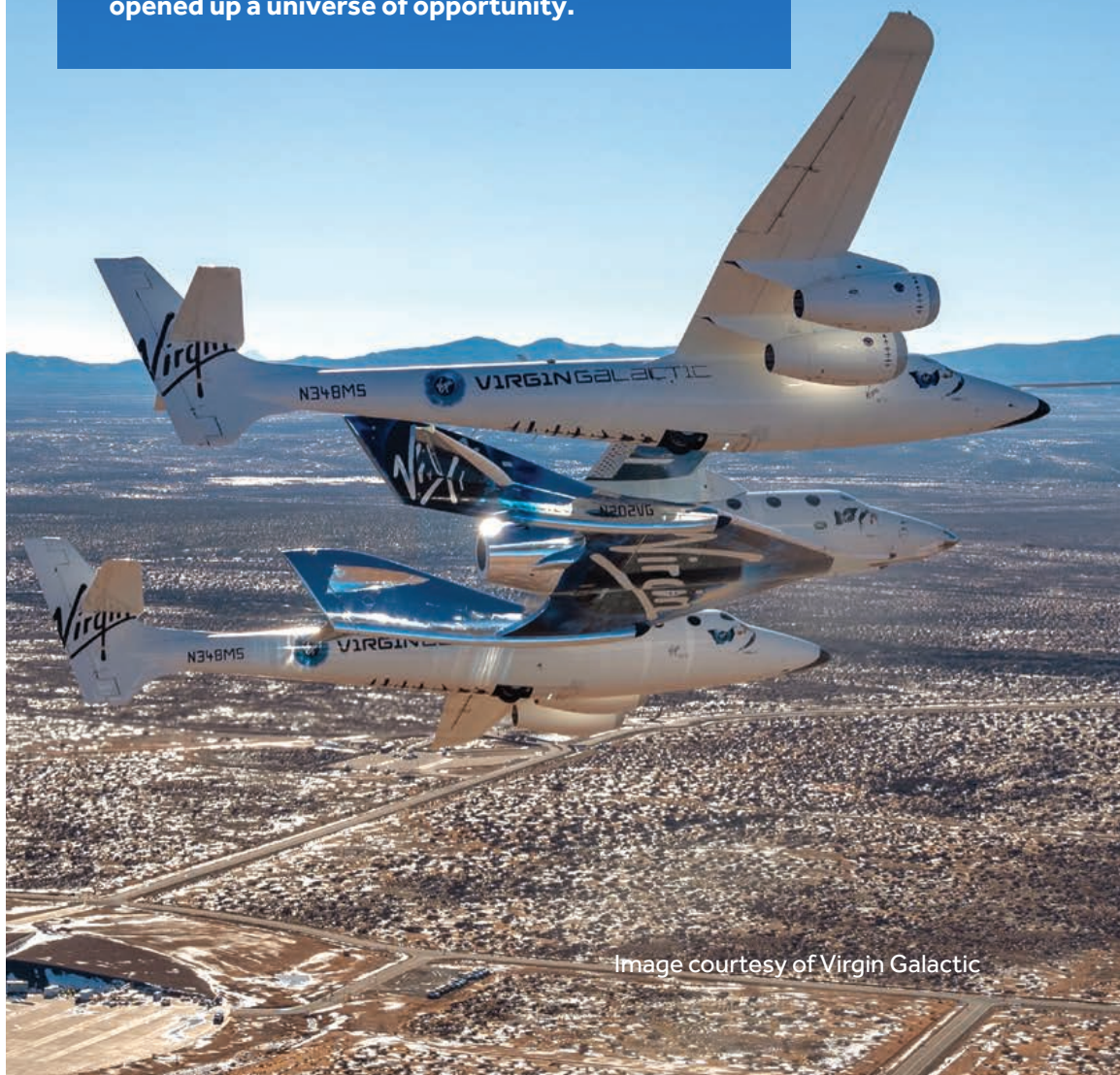


Image courtesy of Virgin Galactic



Julia Hunter
Vice-President of Virgin Galactic

I was attracted to Manchester for its world-class physics centre, but soon found there was more on offer than academia alone. The city, the music and the beautiful John Rylands Library made me fall in love.

After my undergraduate degree, I wanted to broaden my horizons. Manchester's appreciation of multidisciplinary research allowed me to take on an excellent master's project where I could connect my existing skills in astrophysics to the field of earth science, which was totally new to me.

My favourite memories of Manchester include the friends I made – many of whom I'm still in contact with today – and starting the institution's first branch of SEDS (Students for the Exploration and Development of Space). The University also supported my attendance at many external conferences, which helped me to build important networks that I still use today.

My advice for anyone contemplating their next career move is: if you have a big dream, go for it. Be open and accepting to constant inquiry and learning. Get a broad perspective from many disciplines. Push your boundaries and take every opportunity you can.

A global alumni network

At Manchester we have the largest alumni community of any UK campus-based university. Study here and you'll enjoy unique access to our global network of 500,000 professionals and academics.

Alumni regularly share their expertise and experience with students, attending professional networking events and joining career panels on campus. You also have access to The Manchester Network, an exclusive online community, connecting students with alumni who can provide practical advice through mentoring and work experience opportunities.

Former students

Professor Brian Cox OBE **PhD Physics 1998**

Physicist and science communicator

Vincent Kompany **Global MBA 2017**

Footballer and entrepreneur

Dr Mark Kermode **PhD English 1991**

Film critic and broadcaster

Dr Amani Abou-Zeid **PhD Development Administration and Management 2001**

African Union Commissioner for Infrastructure, Energy, ICT and Tourism

Helping you find your future



We have award-winning tools and services to launch your career beyond Manchester – from exceptional alumni networks and a dedicated careers service to volunteering opportunities.



Most targeted university
in the UK for top graduate employers

The Graduate Market in 2020, High Fliers Research

Support and resources

- **Postgraduate career workshops**
Learn about the range of careers available after graduation and how to find one that matches your skills and experience.
- **Professional careers consultants**
Tailored, one-to-one support via face-to-face and video appointments, phone and email.
- **Career networks**
We have one of the largest alumni networks in the UK with thousands of professionals ready to answer your career questions.
- **Online career resources tailored for postgraduates**
We offer career planning advice and a dedicated website for taught master's students on academic careers.

uom.link/pgp-careers

International careers counselling



Get dedicated support with achieving your goals whether these are overseas or in the UK, where post-study work options include the Graduate Route and Start-up visas.

At Manchester you'll have the chance to:

- **Meet employers**
Our close contacts and research collaborations with companies and international employers mean we have strong relationships with a wide variety of organisations. More than 600 recruiters engage with students each year through on-campus and online events.
- **Make connections**
Connect with inspirational alumni, academics, employers – and fellow postgraduates – from all over the world. Whether it's networking with NGOs or meeting hundreds of other researchers at our annual PhD careers event, you'll be encouraged to stretch yourself and fulfil your potential.
- **Become part of our community**
Get involved in volunteering initiatives or communicate your passion for your research via our public engagement programmes.
- **Shape your own future**
Access support and training to help you gain the skills, knowledge and attributes that will stay with you for the rest of your life.

Make a difference



Help tackle the greatest challenges facing society and the environment.

Social responsibility at Manchester

If you want to make a difference in the world, then Manchester is the place for you. As one of the world's leading research and teaching institutions, we have the resources to create fairer, more sustainable ways to live.

We are the only British university to have social responsibility as one of our core goals and we're aligning all of our activities to deliver positive impact locally, nationally and internationally.

Award-winning impact

We're the top university in the UK for social and environmental impact in the 2020 *Times Higher Education* University Impact Rankings.

The rankings reflect our work in support of the United Nations' Sustainable Development Goals, which are a call to action for all countries to tackle the most pressing global questions.

Change the world

Discover what you can contribute to communities across the globe.

Work with impact

Learn about, and contribute to, work that is changing lives for the better. Take part in public and policy engagement, developing your own ideas while benefiting others.

Share your knowledge

Engage with the public through events, talks, festivals and open days.

uom.link/pgp-research-socialresponsibility

Volunteer locally and globally

Make a valuable difference to communities and the environment through hundreds of volunteering opportunities, learning new skills and making community contacts.

uom.link/pgp-volunteers

Lead by example

Set up a social enterprise with expert support from our intellectual property organisation UMI3, Alliance Manchester Business School and our Venture Further competition.

www.umi3.com

Improve the local environment

Take part in our environmental sustainability initiatives.

uom.link/pgp-sustainability

Inspire other students

Become a student mentor, help teach undergraduate students, or meet and advise local disadvantaged schoolchildren hoping for a brighter future.

uom.link/pgp-socialresponsibility

Sustainable development in action

We want to inspire our students to take on grand challenges. That's why we give you opportunities to contribute to global development targets.

For example, our Equity and Merit Programme supports excellent young professionals from Rwanda, Uganda, Ethiopia and Tanzania to undertake master's degrees and gain the skills to contribute to sustainable development in their home countries.

Improving social housing in Rwanda

Emmanuel Ahabwe, Senior Engineer, Ministry of Infrastructure (Rwanda) and Equity and Merit Programme alumnus

One of the main social housing challenges in Rwanda is that people live in high-risk zones where they're prone to disasters.

I came to Manchester to acquire and improve my construction management skills so that I could improve housing quality. I also developed budget planning and time management skills.

Since graduating, I have returned to Rwanda and secured a job at the Ministry of Infrastructure where I am helping to establish a social housing programme, relocating people from high-risk zones to sustainable housing projects.

People now have better housing, schools, health facilities, access to water and electricity. It's my motivation to make sure our children live a better life.

“

It's my motivation to make sure our children live a better life.

”

Campus life



As a postgraduate at Manchester, you'll have access to our central campus and its range of facilities. Located ten minutes from the centre of Manchester, our campus balances the bustle of the city with a strong community feel. Whatever interests you, we have a whole host of opportunities to get involved with.

Our Students' Union

The University of Manchester Student's Union (SU) is the hub of student life. It's a place to relax and socialise, volunteer and campaign, eat and drink, and make connections and friendships for life.

Get involved

- **400+ student societies**
Get involved with everything from politics to performance, flight simulation to scuba diving, Quidditch to K-pop.
- **Job opportunities**
More than 300 students work at the SU.
- **Social enterprise**
Our SU supports any student-led project that tackles barriers to university access and participation.
- **Student media**
The UK's biggest student newspaper, a radio station and a TV channel.

Take time out

- **Eat, drink and shop**
Our SU has a lively space to meet with a bar, food and store – all under one roof.
- **Manchester Academy**
Our acclaimed venues bring you a varied music and club calendar.
- **Pop-up events**
The SU is a hub for events, including food and drink festivals and fashion shows.



Make a difference

- **Charitable fundraising**
Manchester RAG (Raise and Give) is one of the country's largest fundraising groups.
- **Community volunteering**
Help our neighbours via Student Action and join local and national campaigns.



Be active

Investing in your body and mind is particularly important during the mental challenges of postgraduate study. Clear your head, meet new people and gain a healthy work-life balance.



Committed sportspeople

- **43 clubs across 39 sports**
Weekly training with great coaches and matches in the British Universities and College Sports (BUCS) leagues.
- **Sports scholarships**
Support for elite athletes at junior international level.

uom.link/pgp-elitesport

Casual players

- **260+ teams in campus leagues**
Weekly competitions across six sports (including the country's largest soccer league at Wythenshawe Sports Ground).
- **SU sport**
60+ sports societies in our SU.



Harmonious health-seekers

- **Wellbeing activities**
From mindfulness to yoga.
- **Sporticipate**
60+ hours of free weekly activities on campus and in halls, covering everything from aerobics to Zumba.
- **Park runs**
Head out with 200 runners every Saturday morning.
- **#PurpleWave**
Join more than a thousand students, staff and alumni in the annual Great Manchester Run.
- **Group campus walks**
Keep active while getting to know our campus.

uom.link/pgp-sport



World-class facilities

Make the most of some of the UK's biggest and best swimming facilities, floodlit football pitches, fully equipped fitness suites, indoor halls and outdoor courts, wellbeing studios, and much more.

uom.link/pgp-sport-facilities

Join our sport volunteer scheme

Gain valuable experience, coaching qualifications and new friends.

uom.link/pgp-sport-volunteering



Access our support



We want you to enjoy Manchester postgraduate life to the full. That's why we offer you experienced, specialist support services to boost your academic and personal development.

If you're worried about any issues relating to your studies, money, health or wellbeing, you can get in touch with:

- support staff in your academic School;
- ResLife teams who live in halls – your first port of call in University-managed accommodation;
- Students' Union independent professional advisers;
- trained University counsellors;
- Nightline – an anonymous telephone helpline run by students.

uom.link/pgp-student-support

Disability support

If you have additional needs arising from a medical condition, physical or sensory disability, specific learning disability such as dyslexia, or mental health difficulty that affects your studies, we can support you.

You can register with our Disability Advisory and Support Service as soon as you receive an offer, meaning we can support you in the lead-up to joining us and ensure everything you need is in place when you arrive.

Get in touch with our Disability Advisory and Support Service:

uom.link/pgp-dass

Personal safety

We have security services, systems and practical safety advice to help keep you and your property safe. You'll benefit from:

- CCTV and 24/7 security services across campus and University accommodation;
- practical safety advice and support from University staff and Greater Manchester Police.

uom.link/pgp-securityservices

Immigration and visa advice

Our Student Immigration Team provides information and advice for prospective and current Manchester students.

uom.link/pgp-student-support

✉ visa@manchester.ac.uk

Childcare

Studying while caring for children can be a challenge. It's good to know that you've got local support.

- We have two nurseries for children aged between six months and five years – get in touch early to join a waiting list.
- Get involved with our Student Parents and Carers networks run by the Students' Union, who can also offer advice and support.

Religious support

If you want to find out about local faith organisations, explore issues of faith, or discuss a problem with a member of your faith, you will find a diverse community of contacts available, including:

- A Chaplaincy Centre on campus for students of all faith or none;
- Muslim prayer facilities and multi-faith quiet areas on campus;
- Jewish, Christian, Catholic, Muslim, Sikh and Hindu chaplains, plus faith advisers from many other faith communities;
- student societies for most major religions at our Students' Union.

Equality, diversity and inclusion

You should enjoy a positive learning environment that is free from any discrimination, bullying, harassment or victimisation, where you'll be treated with respect and dignity irrespective of your age, disability, ethnicity, gender identity, marital status, nationality, religion or sexual orientation.

Find out about our support, and how you can get involved in equality, diversity and inclusion at Manchester:

uom.link/pgp-equalityanddiversity

We belong

Watch a short film celebrating equality, diversity and inclusion at Manchester:

uom.link/pgp-we-belong-film

Get to know our campus

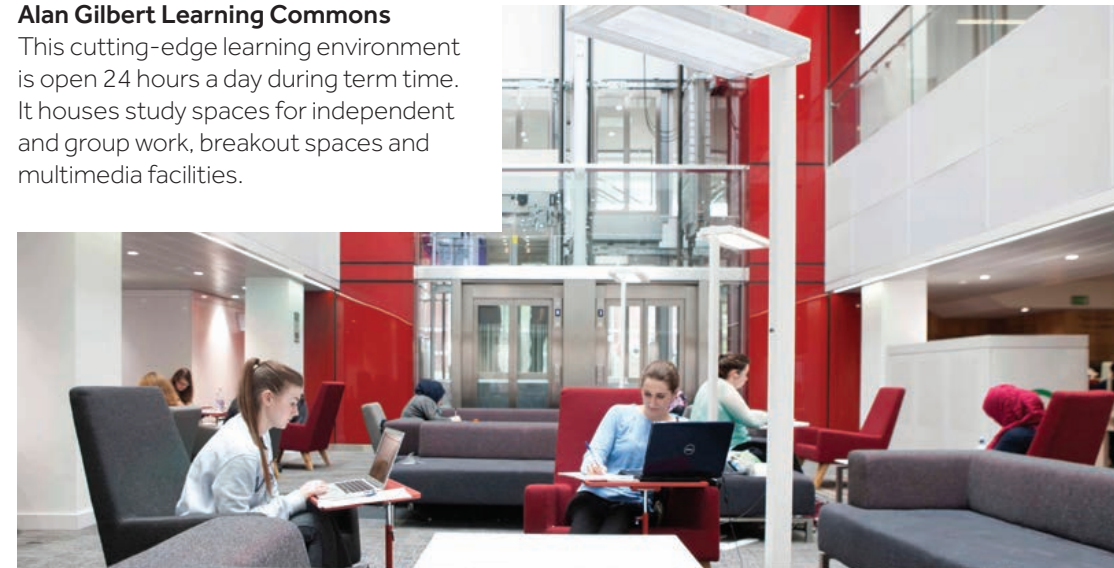


Our campus is not just a place of life-changing study and revolutionary academic discoveries. It's one of inspirational spaces, hidden gems and world-famous culture. What's more, we're continuing to invest in our facilities so that you have an optimum, sustainable, world-class learning environment.

Here's a quick tour of some of the highlights.

Alan Gilbert Learning Commons

This cutting-edge learning environment is open 24 hours a day during term time. It houses study spaces for independent and group work, breakout spaces and multimedia facilities.



Whitworth Hall

The most iconic of our historic Victorian buildings is at the heart of campus. You'll use it as a landmark when you first arrive – and to mark your achievements when you graduate.





The University of Manchester Library

One of only five National Research Libraries in the country. It holds more than 4 million printed books and manuscripts, and 750,000 electronic items.



Jodrell Bank Observatory

Take a trip away to the heart of the Cheshire countryside to explore the wonders of the universe at this University asset and UNESCO World Heritage site.



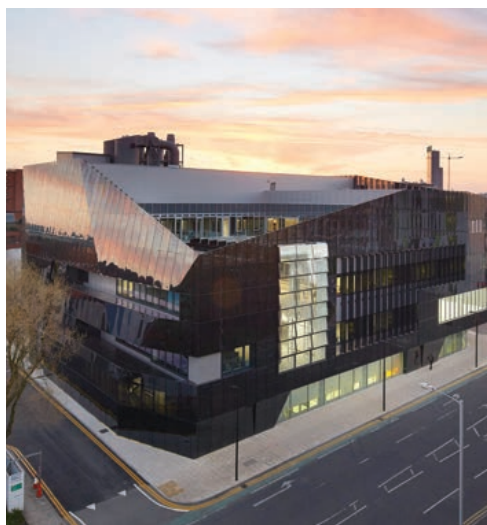
Manchester Museum

Explore ancient worlds and an ever-changing array of exhibitions at our own museum on campus.



The Whitworth

View world-famous art in our award-winning gallery, set among the trees of neighbouring Whitworth Park.



National Graphene Institute

Our world-leading facility for graphene research features state-of-the-art classrooms, laboratories and a sustainable rooftop garden.

Manchester Engineering Campus Development (MECD)

You'll have access to sophisticated facilities in MECD, the single largest home for engineering and materials science at any UK university (opening September 2022).

University Green

A vibrant area at the heart of campus, flanked by restaurants and shops. This green space is a favourite spot for relaxing, reading and even enjoying a summer picnic.

Students' Union and Manchester Academy

A place to socialise, relax and get involved in student life. Right next door to the main union building is the award-winning Manchester Academy, bringing you the best live music and comedy.



Explore the city



Discover Manchester, the creative, cosmopolitan city that has led global revolutions in industry, politics, sport, technology and music. Welcoming and vibrant, it's been named the UK's best city to live in for five consecutive years.*

Here are just a few reasons why.

* Global Liveability Report 2015, 2016, 2017, 2018 and 2019 – The Economist Intelligence Unit



One of the ten
friendliest cities
in the world

Rough Guides 2019

Entertainment and culture

With countless venues supporting new and independent artists, as well as arenas and theatres welcoming the biggest names, Manchester is the ultimate destination for culture vultures, with highlights including the biennial Manchester International Festival.

Our top five

- **The Ritz**
A converted ballroom hosting gigs and club nights
- **HOME**
Art, cinema, theatre and three floors of food and drink
- **Royal Exchange Theatre**
A theatre in the round housed in one of the most beautiful buildings in the city
- **Great Northern**
A hive of cinema, boutique bowling, restaurants, bars and entertainment venues
- **The Bridgewater Hall**
An international concert venue, home to the Hallé Orchestra

Food and drink

Regardless of your budget, taste or appetite, you'll find plenty to satisfy you within Manchester's culinary scene. From independent food festivals and markets to a Michelin star-rated restaurant – there's always something new around the corner.

Our top five

- **Mackie Mayor**
An array of independent traders in a Grade II-listed hall
- **Bundobust**
Veggie-friendly Indian street food
- **Levenshulme Market**
Countless food options at this weekly gathering
- **Rudy's Pizza**
Authentic Neapolitan pizza in the city
- **Grub**
A street-food paradise near Victoria Station



Neighbourhoods

Whether you want laid-back or bustling, Manchester is packed with popular neighbourhoods that are every bit as vibrant as the centre. Get away from campus and explore the fringes of the city for an authentic taste of Manchester life.

Our top five

- **Northern Quarter**
A unique corner of the city full of independent shops, cafes and bars
- **Chinatown**
Choices for all budgets in the UK's second largest Chinatown
- **Didsbury**
A village feel and indie cafes, just south of the city
- **Chorlton**
Bohemian mix of delis, bars, music, and more
- **Altrincham**
A leafy suburb a short tram ride away with an award-winning market



Sport

Manchester's sporting history is the envy of the world – and its present isn't bad either. From two of the world's most famous football clubs to the UK's longest indoor ski slope, you'll find plenty of ways to indulge your sporting passion.

Our top five

- **Lancashire County Cricket Club**
County and international matches
- **National Cycling Centre**
Sprint, mountain and BMX cycling
- **Manchester Aquatics Centre**
An Olympic-size pool on campus
- **Chill Factore**
Indoor skiing and snowboarding
- **The Armitage**
The University's sport centre



Nature

Even though you're in the heart of the city, it's easy to get back to nature in Manchester, with a range of parks large and small on your doorstep. You're also just a short train journey away from glorious national parks.

Our top five

- **Fletcher Moss**
Botanical gardens in nearby Didsbury
- **Heaton Park**
Great green spaces just north of the city centre
- **Dunham Massey**
A National Trust site, home to an ancient deer park
- **Alderley Edge**
A dramatic sandstone ridge with views over Cheshire
- **Peak District**
Take a train out to discover this National Park

Settle into accommodation



We offer a range of accommodation options to suit you. Choose from University-run halls of residence close to campus, or get specialist advice if you're interested in private letting.

University accommodation

Our halls of residence are self-contained communities where you can make friends and feel at home. Some have their own common rooms, study areas and bars, and all offer social activities for you to enjoy. Whether you choose a modern or a more traditional hall, you'll benefit from excellent security and onsite support from the ResLife team.

Our ResLife advisers are on hand in every hall; providing the help you need to settle into your new community, and they will continue to look out for your wellbeing throughout your time living with us. As well as being on call for any issues or incidents, your ResLife advisors hold regular meetings, so you'll find advice right on your doorstep whenever you need it.

Accommodation types

Hall options include:

- postgraduate-only accommodation;
- catered or self-catered halls;
- en-suite or shared bathrooms;
- single or mixed gender accommodation (subject to availability);
- a limited supply of couples' accommodation;
- specially adapted rooms for students with disabilities.*

** Please contact our Accommodation Office before you arrive to discuss your needs.*

Costs

Your hall of residence fee includes all utility bills, insurance and internet (either Wi-Fi or wired ethernet point), and you'll find options to suit all budgets.

- **Single self-catering room with shared facilities**
– from £110 p/w
- **Single self-catering room with en-suite facilities**
– from £150 p/w
- **Single room with shared facilities in a catered hall**
– from £150 p/w

Costs are based on 2020/21 prices and are subject to change; they may also vary depending on facilities. Accommodation contract lengths may vary depending on your residence.

Accommodation guarantee for international students



If you're based outside the EU, we can guarantee you a place in a hall of residence for the full duration of your programme, provided you:

- are coming to university alone;
- firmly accept a place to study here by 31 August of your year of entry;
- apply for accommodation by 31 August;
- re-apply for accommodation in the subsequent years by the deadline and for the full academic year.

If you don't meet the conditions of our guarantee, you may still apply for University accommodation, but we may not be able to offer you a room immediately.

Private accommodation

Manchester Student Homes provides information and advice on privately rented student accommodation in Manchester.

+44 (0)161 275 7680

manchesterstudenthomes@manchester.ac.uk

www.manchesterstudenthomes.com

Living at home

If you decide to live at home while you study at Manchester, you'll still have plenty of opportunities to get involved in student life. Our Students' Union services for students living off-campus include:

- Living at Home Society;
- transport buddy system;
- day trips and networking events;
- Mature Students' Society.

www.manchesterstudentsunion.com/
livingathome

Find out more

Contact our Accommodation Office:

+44 (0)161 275 2888

accommodation@manchester.ac.uk

For the latest information on our accommodation offering, including costs and new developments, please visit the Accommodation Office website.

uom.link/pgp-accommodation

Where you'll be based

University accommodation is set across three main areas, all within easy reach of the campus, the city and amenities. Each area offers something different, but all are great places in which to live and study.

City (six halls)

Our city accommodation is located close to the city centre and at the heart of our teaching campus.

Average journey to campus:

10 minutes on foot

5 minutes by bus

7 minutes by bike

Victoria Park (six halls)

Leafy and tranquil, Victoria Park is just a brisk walk or short bike ride away from campus.

Average journey to campus:

18 minutes on foot

6 minutes by bus

5 minutes by bike

Fallowfield (seven halls)

A vibrant, mixed residential suburb, Fallowfield offers plenty of amenities. It's also within easy reach of the city centre.

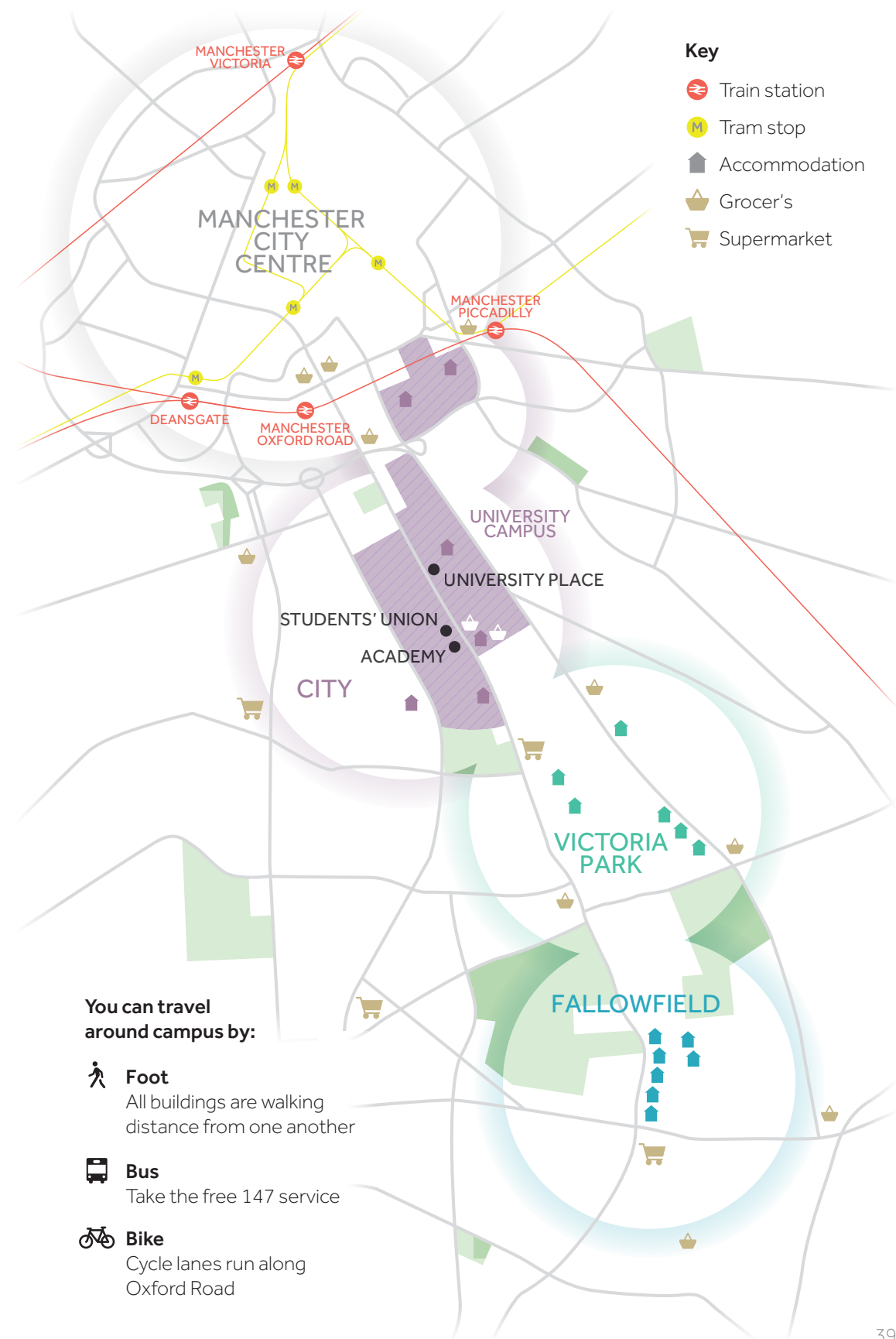
Average journey to campus:

30 minutes on foot

15 minutes by bus

8 minutes by bike

uom.link/pgp-maps



Your doorway to the world



Manchester is a truly global university and city. You'll meet students and staff from near and far, discovering new cultures and perspectives. You'll leave with broader horizons, international employability and connections across the globe.

Support for international students

If you're coming to Manchester from overseas, your international adventure starts here. You'll find extra dedicated support to help you feel at home, including:

- pre-departure webinars and face-to-face briefings in many countries;
- advice on immigration and visas;
- a guaranteed place in University accommodation throughout your study*;
- a comprehensive orientation and welcome programme;
- a free shuttle service for new students arriving at Manchester Airport and opting for University accommodation;
- 80 Students' Union societies dedicated to people and interests from diverse nations;
- The International Society, a social and cultural body extending a welcome to international students with trips, classes and events;
- specialised careers support, including international careers fairs and work experience;
- English language support.

uom.link/pgp-international

www.facebook.com/UoMInternational



Connect with alumni in organisations and countries across the world



Live in a multicultural city ranked among the world's best for international students**



Learn a new language – or improve an existing one – on our University Language Centre programmes
(These may be studied for academic credit or on a non-credit basis)

International numbers



- Our 40,000 students come from 160 countries
- 500,000+ alumni in more than 190 countries
- Ranked 27th in the world (QS Rankings 2020)
- 200 languages spoken in one of the UK's most multicultural cities

** Subject to meeting certain criteria*

*** Ranked 29th in the QS Best Student Cities 2019*

Plan your finances

Postgraduate taught study

Course fees

Check the course profiles online to find out the latest fees.

uom.link/pgp-masters

Funding

- **Postgraduate loan scheme**
Postgraduate loans of up to £11,222 are available for eligible UK/EU students starting master's courses in the 2020/21 academic year, with the amount to increase slightly for 2021/22. Visit our website for details on criteria and applications.
uom.link/pgp-postgraduateloans
- **Manchester Master's Bursary**
We provide 75 bursaries every year if you meet certain criteria.
uom.link/pgp-mastersbursary
- **Equity and Merit Scholarships**
These scholarships help students from developing countries. Your full tuition fee is waived and your living costs and flights to the UK are covered. Awards are also available for study by online learning.
uom.link/pgp-equity-merit
- **Other funding sources**
If you contact course administrators, they can share how previous students financed their studies.

You can also contact the Ministry of Education and the British Council in your home country for advice.

For an overview of voluntary sector funding, email the Manchester Doctoral Centre (subject title 'Alternative Guide to PG Funding') and we'll send the relevant documentation to you.

✉ mdc@manchester.ac.uk

Postgraduate programmes at Manchester charge a tuition fee to cover the cost of study and membership of University libraries and the Students' Union. There are a range of funding opportunities and resources available to help you secure the financial support you need to continue your education.

Choose your journey and we'll guide you through the rest.

Postgraduate research

Fees

Check the programme profiles online to find out the latest fees.

uom.link/pgp-pgr-fees

Funding

- **Research Councils**
Every year the seven government-funded UK Research Councils invest approximately £3 billion in research. Discover what funding is available in your subject area on our website.
uom.link/pgp-pgr-funding
- **Studentships**
We offer various studentships based on academic excellence. Before applying, read the eligibility criteria thoroughly and note the closing deadline. Studentships are also advertised on School and Faculty websites.
uom.link/pgp-studentships
- **President's Doctoral Scholarship Award**
Each year we offer up to 100 elite studentships across our Faculties to individuals who demonstrate academic excellence and leadership potential.
uom.link/pgp-presidents-award
- **Postgraduate Doctoral Loans**
Postgraduate Doctoral Loans of up to £25,000 are available for all types of doctoral study (eg PhDs and equivalent doctoral programmes such as DBA or EdD). For details of eligibility, visit:
www.gov.uk/doctoral-loan

Doctoral Training Partnerships and Centres for Doctoral Training

If you're interested in undertaking a pre-defined research project, then a doctoral training programme might be for you.

These are fully funded opportunities, predominantly funded by the Research Councils, and offer a unique opportunity to be part of a team conducting research that will tackle real-world issues.

For a list and more details, visit: uom.link/pgp-cdt-dtp

Studies to suit you



We offer a range of flexible learning options and tailored support to help you fit a postgraduate programme into your life.

Choose part-time or full-time study

Having extra work, family or financial commitments doesn't mean you have to give up on your goals. We offer most of our postgraduate research programmes on a full-time and part-time basis, and it may also be possible to study some of our postgraduate taught courses part-time.

Available part-time courses are marked in the directory (p80 onwards) as **'PT'**.

International applicants from non-EU countries


Please note that terms of entry into the UK normally prevent you from studying a postgraduate taught or research programme on a part-time basis.

Online and blended learning at Manchester

We offer elements of many programmes online. Furthermore, some of our postgraduate taught courses and a few of our postgraduate research programmes are available to study entirely as online or blended programmes – ideal if you prefer to learn at times and locations more convenient for your circumstances.

We have invested heavily in online and interactive technologies so you can connect with staff and fellow students and enjoy the same support you would get on campus.

We also have international centres in Dubai, Hong Kong, Shanghai and Singapore, enabling us to build strong transnational partnerships and deliver an education designed for today's executives.

Available online and blended courses are marked in the programme listings (p50 onwards) with this icon: 

They are also listed in the directory (p80 onwards) and marked to show whether full-time (**FT**) and/or part-time (**PT**) options are available.

uom.link/pgp-obl



What you can study

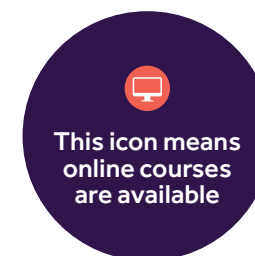
Types of postgraduate taught courses

Course type	Study area / type of qualification
MA	Master of Arts
MBA	Master of Business Administration
MEd	Master of Education
MSc	Master of Science
LLM	Master of Law
MusM	Master of Music
MRes	Master of Research
PGCE	Postgraduate Certificate in Education
PGCert	Postgraduate Certificate (usually six months)
PGDip	Postgraduate Diploma (usually nine months)

Types of postgraduate research programmes

Programme type	Research area / type
PhD	Doctor of Philosophy
Various	Professional doctoral programmes
DBA	Doctor of Business Administration
MD	Doctor of Medicine
MPhil	Master of Philosophy
MSc by Research	One-year stand-alone research programme

Whether you're a recent graduate eager to pursue your research passions or boost your career prospects, or you're a professional looking for a formal qualification, you'll be able to find a programme at Manchester to suit your needs.



How to find a programme

- **Programme listings**
Browse the following pages to explore all our postgraduate degree programmes, grouped together under broad subject areas.
- **Programme directory**
Use the table beginning on p80 to find individual programme listings.
- **Entry requirements**
The skills and qualifications you need will be different for each programme. Check entry requirements on p94.
- **Check our website**
The most up-to-date information is available online.

[uom.link/pgp-taught-courses](https://www.manchester.ac.uk/postgraduate/taught-courses)

[uom.link/pgp-research-courses](https://www.manchester.ac.uk/postgraduate/research-courses)

For the most up-to-date programme information

This prospectus was printed in June 2020 in advance of the programme starting dates. For this reason, information may be amended prior to applying for a place on the programme of study.

There are several reasons why changes to the programme information and/or published term dates may need to be made, including:

- the need to make reasonable changes to the content and teaching offered in relation to any programme for operational and/or academic reasons;
- the withdrawal of programmes due to insufficient cohort numbers;
- a programme not receiving the relevant accreditation required; and/or interruption or loss of key services due to circumstances beyond our control.

Further information describing the teaching, examination, assessment and other educational services offered by The University of Manchester is available on our website.

[uom.link/pgp-postgraduate](https://www.manchester.ac.uk/postgraduate)

AEROSPACE ENGINEERING

 uom.link/pgp-aerospace-engineering

TAUGHT COURSES

Aerospace Engineering MSc

RESEARCH PROGRAMMES

Aerospace Engineering MPhil/PhD

For a complete list of programmes and contact details please see the directory at the back.

OVERVIEW

Choose an exciting, hands-on engineering programme in the world's first industrial city.

What you can expect:

- Fully accredited MSc course
- Qualifications required for Chartered Engineer status
- International partnerships and strong industrial links

WHY MANCHESTER?

- We are world-leading in research areas from computational fluid dynamics to how engineering impacts public policy
- 100% of our impact case studies are graded as 'internationally excellent' (3*) or 'world-leading' (4*) (REF 2014)
- We have more than 200 years' expertise in teaching engineering
- We have strong industrial links with Airbus, Rolls-Royce, EADS, Dstl, MBDA and ESTEC/ESA, and international partnerships including CARD C

YOU MIGHT ALSO BE INTERESTED IN...

Civil Engineering; Electrical and Electronic Engineering; Environmental Engineering; Mechanical Engineering.

ALLIANCE MANCHESTER BUSINESS SCHOOL

 uom.link/pgp-ambs

TAUGHT COURSES

20 taught courses covering business, management, finance, enterprise, marketing and more.

RESEARCH PROGRAMMES

Five research programmes including Accounting and Finance, and Business and Management.

For a complete list of programmes and contact details please see the directory at the back.

OVERVIEW

Experience a world-class, industry-focused education at Alliance Manchester Business School (AMBS), where original thinking is at the heart of everything we do.

What you can expect:

- Academic excellence
- Real-world business and management practice
- Global community of 300 specialist academic and research staff

WHY MANCHESTER?

- One of the UK's first business schools (established in 1965) and one of the largest campus-based business and management schools in the UK
- The 2020 *Financial Times* Global MBA Ranking places our MBA 11th in Europe and 5th in the UK. According to this survey, our full-time MBA graduates achieve an average salary increase of 103% within three years
- Dedicated Alliance MBS Postgraduate Careers Service
- Triple accredited by AMBA, AACSB and EQUIS
- Rated second in the UK for research power (REF 2014)

YOU MIGHT ALSO BE INTERESTED IN...

Economics; International Development.

ARCHAEOLOGY

 uom.link/pgp-archaeology

RESEARCH PROGRAMMES

Archaeology PhD

OVERVIEW

Study archaeology at an internationally recognised centre that is known for its diverse range of expertise, from its survey and excavation fieldwork methods through to oral history, ethnography and ethno archaeology.

What you can expect:

- Academic staff who conduct world-leading research on archaeological projects spanning the globe, from Rapa Nui to prehistoric Britain
- A focus on collaborative research and interdisciplinary learning, with strong links with science, social science and humanities disciplines
- Opportunities for collaboration with national heritage bodies such as English Heritage and Historic Scotland
- Work alongside experienced archaeologists at iconic excavation sites around the world

WHY MANCHESTER?

- Access to the archives and curatorial expertise of Manchester Museum, home to one of the most significant Egyptology collections in Europe
- Benefit from The Manchester Centre for Archaeology and Egyptology, our lively, interdisciplinary hub that brings together archaeology scholars and PhD students
- 90% of our research was judged as having 'very considerable impact' (3*) in the most recent UK-wide research review (REF 2014)

YOU MIGHT ALSO BE INTERESTED IN...

Classics, Ancient History and Egyptology; Art History and Visual Studies; History; Languages and Cultures.

ARCHITECTURE

 uom.link/pgp-architecture

TAUGHT COURSES

Architecture and Urbanism MA
Master of Architecture (MArch)

RESEARCH PROGRAMMES

Architecture PhD

OVERVIEW

Boost your employability with professionally recognised courses at one of the largest and highest-ranking architecture schools in the UK.

What you can expect:

- Study in a city centre that is regarded as an international exemplar of regeneration, much of which has been designed with the involvement of Manchester graduates
- Engage directly with leading-edge design practice
- Enjoy unique access to facilities and resources from both The University of Manchester and Manchester Metropolitan University
- The Architects Registration Board (ARB) and Royal Institute of British Architects (RIBA) recognise MArch Architecture as a Part 2 qualification

WHY MANCHESTER?

- Manchester School of Architecture is ranked in the world's top ten universities for Architecture and second in the UK (QS World University Rankings 2020)
- Strong links with leading architectural practices, who attend end of year shows
- Industry standard computer-aided design software, and new state of the art studios, workshop and model-making spaces

YOU MIGHT ALSO BE INTERESTED IN...

Planning and Environmental Management.

ART HISTORY AND VISUAL STUDIES

 uom.link/pgp-ahvs

RESEARCH PROGRAMMES

Art History and Visual Studies PhD

OVERVIEW

Art History at Manchester offers unrivalled access to University-owned cultural resources and a unique learning experience in one of the fastest-growing creative hubs in the UK.

What you can expect:

- Study with a team of art historians, critics and theorists working at the forefront of the discipline
- The Whitworth Study programme supports interdisciplinary research projects between our students, the Whitworth gallery, artists and curators
- Access to a wide range of research strengths including the Northern Renaissance, Romanticism and contemporary Chinese art.
- Close connections with the Institute for Cultural Practices (ICP)
- Access to our Graduate School, which provides tailored resources and training

WHY MANCHESTER?

- Join one of the UK's top three art history departments (REF 2014)
- Enjoy exclusive access to our award-winning cultural resources, including the Whitworth, The John Rylands Library and Manchester Museum
- Benefit from our strong relationships with museums and galleries across the region and beyond, including TATE Britain and TATE Modern
- Manchester is globally renowned for its art and cultural institutions, including HOME, the largest combined arts centre outside London

YOU MIGHT ALSO BE INTERESTED IN...

Arts Management and Cultural Policy; Museology.

ARTS MANAGEMENT AND CULTURAL POLICY

 uom.link/pgp-icp

TAUGHT COURSES

Arts Management, Policy and Practice MA

RESEARCH PROGRAMMES

Two research programmes specialising in arts and cultural management.

For a complete list of programmes and contact details please see the directory at the back.

OVERVIEW

This dynamic, practice-based master's is delivered by the Institute for Cultural Practices and designed to increase your employability for the arts and cultural sector.

What you can expect:

- Events and masterclasses led by our Centre for Interdisciplinary Research in Arts and Languages
- Project-based research collaborations with cultural venues
- Research specialisms available across performance and activism, digital media for curation, the politics of cultural policy and more
- Network with likeminded students as well as culture and heritage professionals

WHY MANCHESTER?

- We have more than 50 active partnerships with arts and cultural organisations
- Award-winning cultural resources on campus, including the Whitworth and Manchester Museum
- Study in a city internationally renowned for its arts and cultural spaces, including HOME, the largest combined arts centre outside of London

YOU MIGHT ALSO BE INTERESTED IN...

Art History and Visual Studies; Drama; Heritage Studies; Languages and Cultures; Museology; Music.

AUDIOLOGY

 uom.link/pgp-audiology

TAUGHT COURSES

Audiology MSc/PGDip

Advanced Audiology Studies MSc/PGDip

Advanced Audiology Studies (Paediatric Pathway) MSc/PGDip

RESEARCH PROGRAMMES

Audiology MPhil/PhD

Communication Disorders MPhil/PhD

OVERVIEW

Develop your knowledge of audiology and related disciplines with an accredited course at the Manchester Centre for Audiology and Deafness (ManCAD).

What you can expect:

- Our research team has expertise across a range of disciplines, including, hearing therapy, deaf education, psychoacoustics and neural imaging
- Our MSc Advanced Audiology Studies course is for practising audiologists interested in advanced roles in clinical management and practice
- Our MSc Advanced Audiology (Paediatric Pathway) is the only course of its kind in the country for qualified audiologists who want to specialise in paediatrics
- Single units can also be studied for CPD purposes (accredited by the British Academy of Audiology)

WHY MANCHESTER?

- ManCAD is the leading centre for training in Europe
- We have been driving innovation in deaf education for 100 years
- Our graduates are highly sought after by public and private sector employers worldwide
- Postgraduate researchers enjoy excellent training and support through our Doctoral Academy

YOU MIGHT ALSO BE INTERESTED IN...

Biosciences; Deaf Education; Medical Sciences.

BIOSCIENCES

 uom.link/pgp-biosciences

TAUGHT COURSES

20 courses covering all fields of life sciences.

RESEARCH PROGRAMMES

29 courses covering all fields of life sciences, including doctoral training partnerships.

For a complete list of programmes and contact details please see the directory at the back.

OVERVIEW

Start or continue your career in biosciences with rich, research-led postgraduate opportunities that span all fields of life sciences, from the molecule in a cell to the whole organism and environment.

What you can expect:

- Learn novel and innovative approaches to solving important bioscience problems, with access to the latest technologies
- More than 28,000m² of research space
- A strong and vibrant interdisciplinary scientific community, with strong links to local NHS trusts and industry

WHY MANCHESTER?

- Ranked fourth in the UK for research power in biological sciences (REF 2014)
- Strong industry links offer placement and project opportunities across a broad range of disciplines – choose placements with over 200 labs at the University
- State-of-the-art research facilities, including bio-imaging, electron microscopy, flow cytometry, mass spectrometry, bioinformatics, histology, transgenics and X-ray crystallography

YOU MIGHT ALSO BE INTERESTED IN...

Chemistry; Computer Science; Earth and Environmental Sciences; Medical Sciences.

CHEMICAL ENGINEERING AND ANALYTICAL SCIENCE

 uom.link/pgp-ceas

TAUGHT COURSES

Advanced Chemical Engineering MSc
Advanced Process Integration and Design MSc
Subsurface Energy Engineering MSc

RESEARCH PROGRAMMES

Eight research themes including materials, biochemical engineering and multi-scale modelling.

For a complete list of programmes and contact details please see the directory at the back.

OVERVIEW

Study at the birthplace of chemical engineering and become part of a rich lineage of engineers who have trained at Manchester.

What you can expect:

- Join the UK's largest department of chemical engineering
- Learn how to apply chemical engineering in a 21st century context, embedding sustainability into all aspects of design
- A broad research base enabling you to study the design, operation and integration of different complex systems, particularly industrial, biological and instrumentation
- Access an impressive range of lab space, computer suites and large-scale industrial processing equipment

WHY MANCHESTER?

- Outstanding research facilities housed in our £12 million James Chadwick Building
- One of the top five institutions in the UK to study chemical engineering (QS World University Rankings 2020)
- Chemical engineering was created by George E Davis of Manchester Technical School (now part of the University)
- 90% of our research is described as 'internationally excellent' (3*) or 'world-leading' (4*) (REF 2014)

YOU MIGHT ALSO BE INTERESTED IN...

Earth and Environmental Science;
Aerospace Engineering; Electrical and Electronic Engineering; Environmental Engineering.

CHEMISTRY

 uom.link/pgp-chemistry

TAUGHT COURSES

Chemistry MSc
Analytical Science (distance-learning) MSc

RESEARCH PROGRAMMES

Ten courses covering biological, inorganic, organic, material and physical chemistry.

For a complete list of programmes and contact details please see the directory at the back.

OVERVIEW

Join one of the most well-respected chemistry departments in the UK, working at the forefront of the subject to find new ways to deliver a healthier, more sustainable future.

What you can expect:

- Academic coverage across the chemical sciences and core sub-disciplines
- Strong links with more than 80 companies and 150 international universities and research institutions
- Partnerships with The Manchester Institute of Biotechnology, Dalton Nuclear Institute, Photon Science Institute and National Graphene Institute

WHY MANCHESTER?

- Our people are internationally renowned and recognised – 11 Manchester academics were awarded prestigious Royal Society of Chemistry awards in 2020
- Ranked fourth in the UK, seventh in Europe and 23rd worldwide for chemistry (QS World University Rankings 2020)
- 92% of research described as 'internationally excellent' (3*) or 'world-leading' (4*) (REF 2014)

YOU MIGHT ALSO BE INTERESTED IN...

Chemical Engineering and Analytical Science;
Earth and Environmental Sciences; Materials; Biological Sciences.

CIVIL ENGINEERING

 uom.link/pgp-civil-engineering

TAUGHT COURSES

Structural Engineering MSc

RESEARCH PROGRAMMES

Civil Engineering MPhil/PhD

OVERVIEW

Boost your skills in civil engineering and tackle society's greatest challenges with practical courses developed alongside industrial and international experts.

What you can expect:

- Develop the expertise needed to create, improve and protect sustainable physical and natural built environments
- Experience world-leading research and learn how to apply this to deliver practical solutions to challenges facing modern industry
- Enjoy teaching from internationally renowned engineers and researchers

WHY MANCHESTER?

- The MSc course is accredited by the Joint Board of Moderators (JBM), which includes the Institution of Civil Engineers and the Institution of Structural Engineers, as an Approved Further Learning Scheme. The qualification can be used to support an application to become a professional Chartered Engineer
- Access state-of-the-art computational and experimental facilities
- Benefit from strong industry links and excellent employability in a diverse sector

YOU MIGHT ALSO BE INTERESTED IN...

Aerospace Engineering; Electrical and Electronic Engineering; Environmental Engineering.

CLASSICS, ANCIENT HISTORY AND EGYPTOLOGY

 uom.link/pgp-clah

TAUGHT COURSES

Classics and Ancient History MA
Egyptology (distance-learning) MA

RESEARCH PROGRAMMES

Classics and Ancient History PhD
Egyptology PhD

OVERVIEW

Join a combined department of Classics, Ancient History, Archaeology and Egyptology and benefit from a range of research expertise.

What you can expect:

- Interdisciplinary teaching that offers insight into the archaeology of ritual, heritage theory and the ethics of museum practice
- MA in Classics and Ancient History offers a specialist pathway during which students have the chance to study at the British School in Rome
- Classics and Ancient History PhD includes specialist language support and technical skills such as papyrology and palaeography

WHY MANCHESTER?

- 100% of Classics and Ancient History research environment activities, facilities and resources were judged to be 'internationally excellent' (3*) or 'world-leading' (4*) (REF 2014)
- Access the exclusive holdings of The John Rylands Library, home to one of the most important collections of papyri in the world
- Manchester Museum is based on campus and home to one of the most significant Egyptology collections in Europe
- Research seminars offer networking opportunities with guest speakers from the UK and overseas

YOU MIGHT ALSO BE INTERESTED IN...

Art History; History; Languages and Cultures.

COMPUTER SCIENCE

 uom.link/pgp-cs

TAUGHT COURSES

Nine taught courses including Advanced Computer Science, Artificial Intelligence and Computer Security, and optional pathways for MSc.

RESEARCH PROGRAMMES

Four research themes including Computer Systems Engineering, Data Engineering, Computer Science and Software Systems Engineering.

For a complete list of programmes and contact details please see the directory at the back.

OVERVIEW

Join one of the oldest and most established computer science schools in the UK, home to 50 years of pioneering developments in computing.

What you can expect:

- High-quality, innovative research that is centred on solving real-world challenges
- Choose from a wide variety of topics and specific pathways to suit your interests
- Opportunities to showcase your own research and to contribute to international conferences and journals
- Get hands-on with specialist equipment and facilities, including robotics and modelling laboratories


WHY MANCHESTER?

- The best environment in the UK for computer science and informatics research, ranking in the top 5% for 'research quality' (REF 2014)
- Pioneering research includes new brain-like computer architectures, low-power chip design and medical imaging techniques
- Incredible computing heritage – several of the world's first computing machines were produced by researchers in the School and the first stored-program computer was created at Manchester

YOU MIGHT ALSO BE INTERESTED IN...

Electrical and Electronic Engineering; Alliance Manchester Business School; Mathematics.

CREATIVE WRITING AND CONTEMPORARY LITERATURE

 uom.link/pgp-centrefornewwriting

TAUGHT COURSES

Four taught courses including playwriting and screenwriting.

RESEARCH PROGRAMMES

Creative Writing PhD

For a complete list of programmes and contact details please see the directory at the back.

OVERVIEW

Join our prestigious Centre for New Writing, part of the UNESCO City of Literature team, and learn from some of the biggest names in contemporary literature.

What you can expect:

- Workshops in fiction and poetry led by award-winning writers
- One-to-one instruction from writers-in-residence and skills-related sessions delivered by professionals in the publishing industry
- Work with leaders in your chosen field, from writers to industry practitioners
- Internships with literary institutions and industry placements with leading production companies (MA Screenwriting)

WHY MANCHESTER?

- Our distinguished teaching staff include: novelist Jeanette Winterson OBE, poet John McAuliffe and cultural critic Kaye Mitchell
- Our Literature Live reading series attracts an impressive line-up of speakers, such as Anne Enright, Martin Amis, Seamus Heaney, Hilary Mantel and others
- One of the UK's best-resourced university libraries, which has received £650 million investment in research and study facilities

YOU MIGHT ALSO BE INTERESTED IN...

Drama; English Literature and American Studies; Linguistics and English Language; Modern Languages and Cultures.

CRIMINOLOGY

 uom.link/pgp-criminology

TAUGHT COURSES

Criminology MA/MRes/PGDip
Criminology MRes (Social Statistics)

RESEARCH PROGRAMMES

Criminology PhD

OVERVIEW

Join a combined department of Law, Criminology and Healthcare and benefit from the one of the broadest range of specialisms of any UK law school.

What you can expect:

- Learn from world-class academics with diverse backgrounds, including legal scholars, bioethicists, social scientists, sociologists, psychologists, criminologists and philosophers
- Collaborate with specialists at the Centre for Criminology and Criminal Justice (CCCJ), which has an international reputation for leading criminological research
- Modern, innovative postgraduate programmes that seek to address controversial ethical issues through research
- Network with prospective employers through on-campus presentations, talks and mentoring schemes

WHY MANCHESTER?

- Ranked in the top ten for criminology in the *Guardian University Guide* and the *Sunday Times Good University Guide* (2020)
- Gain knowledge from our close links with agencies and professionals in the field of criminal justice
- Innovative, interdisciplinary criminology programmes focus on current trends and historical debates surrounding key issues of crime causation, crime control and regulation

YOU MIGHT ALSO BE INTERESTED IN...

Alliance Manchester Business School; Politics.

DEAF EDUCATION

 uom.link/pgp-deafeducation

TAUGHT COURSES

Deaf Education MSc/PGDip

OVERVIEW

Learn how to develop your skills as a qualified teacher so you can help deaf children reach their full potential and gain qualified Teacher of the Deaf status.

What you can expect:

- Gain real-world experience through two practical placements
- Learn from nationally and internationally recognised academics and practitioners
- Access state-of-the-art equipment, including our labs, specialist deaf education resources and the largest e-library in the UK
- A Department for Education and National College of Teaching and Learning approved course

WHY MANCHESTER?

- Study on the most pioneering deaf education course in the UK at a university that has been developing expertise in this area for 100 years
- Be part of a university where research influences, underpins and delivers improved services for deaf children and their families
- Enjoy innovative approaches to learning and choose to study full-time, part-time, via e-learning or on campus

YOU MIGHT ALSO BE INTERESTED IN...

Education; Advanced Audiology Studies (Paediatric Pathway); CPD modules.

DENTISTRY

 uom.link/pgp-dentistry

TAUGHT COURSES

A range of clinical and non-clinical programmes including Endodontics, Fixed and Removable Prosthodontics, and more.

RESEARCH PROGRAMMES

Eight research programmes including Basic Dental Sciences, Clinical Dentistry, Orthodontics and Prosthodontics.

For a complete list of programmes and contact details, please see the directory at the back.

OVERVIEW

Our research excellence and close links with the NHS make Manchester a great place to start or progress your dentistry career.

What you can expect:

- Wide-ranging courses offering the flexibility to further your skills and knowledge in a research capacity (MPhil/PhD), or through a one-year full-time, two-year part-time, or three-year full-time clinically taught course
- Clinical hands-on experience in small groups that ensure optimal staff-to-student interaction
- Maintain and develop clinical skills while completing doctoral research through our internationally recognised four-year clinical PhD, which can be tailored to accommodate your research interests

WHY MANCHESTER?

- 88% of our research is rated 'internationally excellent' (3*) or 'world-leading' (4*) (REF 2014)
- A well-established history of providing quality taught dental courses
- Postgraduate research students benefit from training opportunities and support through our Doctoral Academy

YOU MIGHT ALSO BE INTERESTED IN...

Biosciences; Medical Sciences.

DRAMA

 uom.link/pgp-drama

TAUGHT COURSES

Film Studies MA
Playwriting MA

RESEARCH PROGRAMMES

Anthropology, Media and Performance PhD
Applied Theatre PhD
Drama PhD

For a complete list of programmes and contact details please see the directory at the back.

OVERVIEW

Join a drama school with a worldwide reputation for excellence, set within a city renowned for its rich arts and culture environment.

What you can expect:

- Participate in research structured around applied theatre and performance, theatre historiographies and film and screen studies
- Develop the skills you need to work in creative industries
- Engage with Manchester's vibrant cultural life through work placements and research collaborations with our partners, including Contact Theatre, HOME, the Royal Exchange Theatre and the Theatre in Prisons and Probation Centre

WHY MANCHESTER?

- Work with highly regarded scholars at one of the UK's leading drama research centres
- We are ranked second nationally among UK drama departments (REF2014)
- Enjoy access to a range of cultural partners, including Community Arts Northwest, Granada Centre for Visual Anthropology and North West Film Archive

YOU MIGHT ALSO BE INTERESTED IN...

Arts Management and Cultural Policy; Creative Writing and Contemporary Literature; English and American Studies; Music.

EARTH AND ENVIRONMENTAL SCIENCES

 uom.link/pgp-ees

TAUGHT COURSES

Three taught courses including Petroleum Exploration Geoscience, Pollution and Environmental Control, and Petroleum Geoscience for Reservoir Development and Production.

RESEARCH PROGRAMMES

14 research programmes in themes including atmospheric science, planetary and earth science, ecology and evolution, palaeontology, molecular environmental science and more.

For a complete list of programmes and contact details please see the directory at the back.

OVERVIEW

Set the path for a stimulating career in earth and environmental sciences, and develop the skills to tackle some of the planet's biggest challenges.

What you can expect from your course:

- Innovative and internationally recognised courses led by renowned scientists
- Exposure to networking and real-world experience through a strong network of industrial links
- Access to cross-disciplinary research centres, including the Centre for Atmospheric Science and Manchester Energy

WHY MANCHESTER?

- Top ten in the UK for earth sciences and environmental sciences (QS World University Rankings 2020)
- Top five in the UK in the latest Research Excellence Framework (REF 2014)
- Strengthened research position through the expansion of the School to include environmental ecology and evolutionary biology
- World-class research facilities including a range of specialist labs and an atmospheric measurement facility with a research aircraft

YOU MIGHT ALSO BE INTERESTED IN...

Chemistry; Physics and Astronomy; Geography; Planning and Environmental Management.

ECONOMICS

 uom.link/pgp-economics

TAUGHT COURSES

Economics MA
Economics MSc
Financial Economics MSc

RESEARCH PROGRAMMES

Economics PhD

OVERVIEW

Gain a competitive edge in modern finances with a qualification from one of the UK's top ten universities for economics.

What you can expect:

- Internationally renowned postgraduate training delivered by leading academics
- State-of-the-art software and tools used by professional economists
- Enhanced learning experience with specialist courses delivered in small groups
- Economic and Social Research Council recognition for all our MSc courses which allow entry on to the second year of the PhD programme

WHY MANCHESTER?

- 90% of our economics graduates find employment within six months (Destinations of Leavers from Higher Education Survey)
- Ranked seventh for research power among UK economics departments (REF 2014)
- 75% of our research activity has been rated as 'internationally excellent' (3*) or 'world-leading' (4*) (REF 2014)
- Ranked in the top ten for economics and econometrics (QS World University Rankings 2020)

YOU MIGHT ALSO BE INTERESTED IN...

Alliance Manchester Business School; International Development.

EDUCATION

 uom.link/pgp-education

TAUGHT COURSES

Eight taught courses including Education, Educational Leadership, Psychology of Education and more.

RESEARCH PROGRAMMES

Counselling Psychology DCounsPsych
Education PhD
Educational and Child Psychology DEdChPsy

POSTGRADUATE TEACHER TRAINING

14 PGCE courses covering both Primary and Secondary.
Our postgraduate teacher training courses are also available through School Direct. Find out more: www.seed.manchester.ac.uk/education/study/pgce/school-direct

For a complete list of programmes and contact details please see the directory at the back.

OVERVIEW

Enhance your career prospects with a qualification from the Manchester Institute of Education (MIE), a specialist centre dedicated to improving the quality of education globally.

What you can expect:

- Achieve qualified teacher status
- Gain significant school-based teaching experience through placements
- Benefit from research expertise across diverse areas, from educational policy and leadership to special education

WHY MANCHESTER?

- One of the top ten education departments in the UK (QS World Rankings by Subject 2020)
- Strong international student community drawn from educational contexts all over the world
- PGCEs rated 'outstanding' across the board by Ofsted (2018)

YOU MIGHT ALSO BE INTERESTED IN...

Psychological Sciences.

ELECTRICAL AND ELECTRONIC ENGINEERING

 uom.link/pgp-eee

TAUGHT COURSES

Advanced Control and Systems Engineering MSc
Advanced Electrical Power Systems Engineering (MSc)
Renewable Energy and Clean Technology MSc
Electrical Power Systems Engineering MSc
Communication and Signal Processing MSc

Each course can be studied as a one-year MSc or with an extended research project option for two years.

RESEARCH PROGRAMMES

Electrical and Electronic Engineering MPhil/PhD

OVERVIEW

Our electrical and electronic engineering programmes provide the skills you need to create a more sustainable future and boost your employability.

What you can expect:

- Accreditation from the Institution of Engineering and Technology
- Access to outstanding facilities, including the National Instruments Teaching Lab and the National Grid Power Systems Research Centre
- Learn how to develop, implement and harness new technologies that are transforming our world
- Research lead courses ensuring excellent employability prospects

WHY MANCHESTER?

- One of the top four UK institutions for electrical and electronic engineering (QS World University Rankings 2020)
- 93% of our research ranked as 'internationally excellent' (3*) or 'world-leading' (4*) (REF 2014)
- A fun, supportive, student community with a host of clubs and societies

YOU MIGHT ALSO BE INTERESTED IN...

Computer Science; Materials; Physics and Astronomy; Aerospace Engineering.

ENGLISH AND AMERICAN STUDIES

 uom.link/pgp-american-studies

TAUGHT COURSES

English Literature and American Studies MA
Modern and Contemporary Literature MA
Gender, Sexuality and Culture MA/PGDip

RESEARCH PROGRAMMES

English and American Studies PhD
For a complete list of programmes and contact details please see the directory at the back.

OVERVIEW

Join a thriving, creative learning environment at the UK's first Department of American Studies.

What you can expect:

- Wide-ranging research opportunities covering the colonial era to current events, including the Civil War, topics of slavery and race and Hollywood film
- A stimulating learning environment with seminars, masterclasses, public lectures and reading groups
- Renowned teaching staff, who are published experts in their field
- Close links to the Centre for New Writing, Manchester Literature Festival and The John Rylands Library

WHY MANCHESTER?

- One of the top three universities in the UK for American Studies (*Complete University Guide* and *Sunday Times Good University Guide* 2020)
- 75% of our research is rated 'internationally excellent' (3*) or 'world-leading' (4*) (REF 2014)
- Our Literature Live reading series attracts an impressive line-up of speakers, such as Anne Enright, Martin Amis, Seamus Heaney, Hilary Mantel and others

YOU MIGHT ALSO BE INTERESTED IN...

Creative Writing and Contemporary Literature; Drama; Film Studies; Modern Languages and Cultures; Social Anthropology.

ENVIRONMENTAL ENGINEERING

 uom.link/pgp-environmental-engineering

RESEARCH PROGRAMMES

Environmental Engineering MPhil/PhD

OVERVIEW

Our postgraduate research programmes in Environmental Engineering offer the opportunity to study in a multidisciplinary team alongside leading academics in the field.

What you can expect:

- Learn and develop your skills in state-of-the-art computational and experimental facilities
- Strong links with industry and excellent employability prospects, with graduates progressing into a wide variety of careers including engineering, academia, public services and commerce
- Enjoy access to the Tyndall Centre for Climate Change Research, which leads cutting-edge, interdisciplinary research to inform climate policy

WHY MANCHESTER?

- World-leading research centres including the Tyndall Centre for Climate Change Research, Dalton Nuclear Institute, Sustainable Consumption Institute, Manchester Energy and SUPERGEN Bioenergy Hub
- More than 200 years' expertise in teaching engineering and many of our graduates achieve excellence on a worldwide stage
- 100% of our impact case studies were graded as 'internationally excellent' (3*) or 'world-leading' (4*) (REF 2014)

YOU MIGHT ALSO BE INTERESTED IN...

Civil Engineering; Electrical and Electronic Engineering; Planning and Environmental Management.

GEOGRAPHY

uom.link/pgp-geography

TAUGHT COURSES

Four taught courses including Environmental Governance, Modelling and Human Geography.

RESEARCH PROGRAMMES

Human Geography PhD

Physical Geography PhD

For a complete list of programmes and contact details please see the directory at the back.

OVERVIEW

Geography has been taught at Manchester for more than 125 years and the region's rich landscape, heritage and cultural vibrancy make it one of the most geographically interesting areas of the UK to live and study.

What you can expect:

- Develop a highly valued set of transferable skills, including communication, data analysis and problem-solving
- Learn from experienced academics who are well-respected within the international research community
- Human geographers can enjoy unique access to the Manchester Urban Institute, a leading research facility delivering global impacts
- Physical geographers can benefit from research expertise in a range of disciplines

★ WHY MANCHESTER?

- We're one of the top 25 geography departments in the world (QS World University Rankings by Subject 2020)
- Custom-built geography laboratories and cutting-edge GIS computer software
- Excellent opportunities for work placements and international fieldwork

? YOU MIGHT ALSO BE INTERESTED IN...

Earth and Environmental Science; Humanitarianism, Conflict Response, Disaster Management and Peacebuilding; Planning and Environmental Management.

HEALTH DATA SCIENCE AND HEALTH INFORMATICS

uom.link/pgp-hds

TAUGHT COURSES

Health Informatics MSc/PGDip/PGCert (joint award with UCL; blended learning) flexible over five years

Health Data Science MSc/PGDip/PGCert (face-to-face and distance-learning)

Clinical Bioinformatics PGCert (distance-learning)

RESEARCH PROGRAMMES

Seven research programmes covering bioinformatics, epidemiology, health economics, informatics, data sciences, psychology, public health and more.

For a complete list of programmes and contact details please see the directory at the back.

i OVERVIEW

Develop the skills you need to work as a health data scientist and help tackle the latest challenges in healthcare delivery.

What you can expect:

- Gain practical insights into the healthcare and medical sectors
- Discover how to collect and interpret complex health data using the latest technical software
- Learn to work in multidisciplinary teams and share knowledge with students from a variety of professional backgrounds
- Benefit from the latest research and teaching via the Health eResearch Centre (HeRC) and Innovation Teaching Hub
- Our courses underpin national training schemes for the NHS

★ WHY MANCHESTER?

- The UK's largest faculty in health data sciences and informatics
- World-leading research environment, which includes a Health Data Research UK site, a national institute funded by the Department of Health and the Manchester Biomedical Research Centre

- Open up a wealth of career opportunities in the NHS, industry and academia

HERITAGE STUDIES

uom.link/pgp-heritagestudies

TAUGHT COURSES

Heritage Studies MA/PGDip

Art Gallery and Museum Studies MA

Arts Management, Policy and Practice MA

RESEARCH PROGRAMMES

Museology PhD

Museum Practice Professional Doctorate

For a complete list of programmes and contact details please see the directory at the back.

i OVERVIEW

Gain the skills and experience to get ahead in heritage policy, management, conservation, learning, engagement and enterprise careers.

What you can expect:

- Learn the theory and practice behind heritage-making and use in local, national and international contexts
- Gain workplace experience with a placement at a heritage site or local organisation
- Specialise in your chosen area of heritage practice with standalone creative professional development course units

★ WHY MANCHESTER?

- Strong relationships with national heritage organisations, including Quarry Bank Mill, Imperial War Museum North and the Museum of Science and Industry
- Courses designed with the University's Institute for Cultural Practices (ICP) to balance academic excellence with work-based training
- Opportunities to get involved in live projects with local heritage organisations
- Access to key University assets such as Manchester Museum, The John Rylands Library and Jodrell Bank Discovery Centre

? YOU MIGHT ALSO BE INTERESTED IN...

Arts Management and Cultural Policy; Museology.

HISTORY

uom.link/pgp-history

TAUGHT COURSES

History MA

History of Science, Technology and Medicine MSc

Medieval and Early Modern Studies MA

RESEARCH PROGRAMMES

History MPhil/PhD

For a complete list of programmes and contact details please see the directory at the back.

i OVERVIEW

Embark on a course at one of the UK's leading universities for history and gain access to world-class expertise, rich library and archive holdings unique research and social engagement initiatives.

What you can expect:

- Create a personalised portfolio of course units from our wide range of MA taught courses
- Interact with a vibrant research community of internationally acclaimed academics
- The chance to participate in seminars, workshops and masterclasses with international scholars
- Develop vocational skills on our film making course or focus on research training for future doctoral work

★ WHY MANCHESTER?

- One of the top ten universities in the UK for history (*THE* World University Rankings 2020)
- Home to one of the largest concentrations of historians in Britain
- Ranked fourth in the UK for quality of publications (2014)
- The John Rylands Library, part of the third largest academic library in the UK, and home to over a million archived items

? YOU MIGHT ALSO BE INTERESTED IN...

Archaeology; Art History and Visual Studies; Classics and Ancient History.

HUMANITARIANISM, CONFLICT RESPONSE, DISASTER MANAGEMENT AND PEACEBUILDING

 uom.link/pgp-hcri

TAUGHT COURSES

Four courses covering the areas of international disaster management, global health, humanitarianism and conflict response and humanitarian practice.

RESEARCH PROGRAMMES

Humanitarianism and Conflict Response PhD

For a complete list of programmes and contact details please see the directory at the back.

OVERVIEW

Our leading global centre offers a multidisciplinary learning environment and opportunities to gain the skills required for careers in humanitarian aid.

What you can expect:

- Develop the skills to analyse and apply key concepts in disaster management and humanitarianism theory, research, policy and practice
- Engage first-hand with the people, that shape humanitarian aid, global health, disaster management and conflict response
- Learn from an interdisciplinary team with expertise in geography, history, politics, development studies, the arts and medicine
- Embark on research trips to areas recovering from disasters or conflict to critically interrogate humanitarian practices

WHY MANCHESTER?

- We are renowned for driving improvements in global crisis response and providing a centre of excellence for practitioners in the field
- Our inclusive approach unites medicine and humanities, mirroring the reality of aid operations
- Our academic and professional agenda is used by humanitarians worldwide

YOU MIGHT ALSO BE INTERESTED IN...

Geography; Planning and Environmental Management.

INTERNATIONAL DEVELOPMENT

 uom.link/pgp-id

TAUGHT COURSES

19 taught courses across areas including international development, development economics, policy and finance, global urban development and planning, and human resource development.

RESEARCH PROGRAMMES

Development Policy and Management PhD

For a complete list of programmes and contact details please see the directory at the back.

OVERVIEW

Boost your employability with a course at Manchester's Global Development Institute (GDI), the UK's largest university-based postgraduate centre specialising in international development.

What you can expect:

- A research-informed approach to teaching and learning, drawing upon GDI's internationally recognised research activities
- A strong heritage of training practitioners and leaders to provide solutions to the growing complex challenges facing society today
- Excellent opportunities for international fieldwork
- Lectures from high-profile researchers and practitioners from around the world

WHY MANCHESTER?

- Europe's largest international development research and teaching institute, focused on reducing poverty and promoting sustainable development
- Ranked in the world's top ten universities for development studies (QS World University Rankings 2020)
- Ranked first for research impact and second for research quality in development studies (REF 2014)

YOU MIGHT ALSO BE INTERESTED IN...

Alliance Manchester Business School; Humanitarianism, Conflict Response, Disaster Management and Peacebuilding.

LANGUAGES AND CULTURES

 uom.link/pgp-languages

TAUGHT COURSES

Modern Languages and Cultures MA

RESEARCH PROGRAMMES

12 research programmes including Chinese, East Asian, French, German, Italian, Russian, Spanish, Japanese and Middle Eastern Studies.

For a complete list of programmes and contact details please see the directory at the back.

OVERVIEW

Our broad range of research programmes and flexible MA structure allow you to combine your interests in different languages or focus exclusively on one area.

What you can expect:

- Investigate languages in their social, aesthetic, political and ethical context, developing a comprehensive and well-rounded understanding of your chosen cultures
- Wide-reaching research expertise to help achieve your research goals and enjoy dedicated doctoral support
- Access one of the UK's leading research libraries and the resources at the University Language Centre

WHY MANCHESTER?

- Ranked third in the UK for research power in modern languages and linguistics (REF 2014)
- We play an active role in three Arts and Humanities Research Council-funded national consortia, including the British Inter-University China Centre
- Our annual Palaver Festival offers opportunities to explore links between language and performance across a range of arts genres, from song to theatre

YOU MIGHT ALSO BE INTERESTED IN...

Arts Management and Cultural Policy; Linguistics; Religions and Theology; English Language; Translating, Interpreting and Intercultural Studies.

LAW

 uom.link/pgp-law

TAUGHT COURSES

15 courses covering Law, Healthcare Ethics, International Business and Commercial Law and International Economic Law.

RESEARCH PROGRAMMES

Bioethics and Medical Jurisprudence PhD
Law PhD

For a complete list of programmes and contact details please see the directory at the back.

OVERVIEW

Join a combined department of Law and Healthcare Ethics and benefit from one of the broadest range of specialisms of any UK law school.

What you can expect:

- Tailor our exciting range of law programmes to suit to your interests and aspirations in a multi-directional or focused approach
- Learn from leading academics with diverse backgrounds, including legal scholars, bioethicists, social scientists and criminologists
- Modern, innovative postgraduate programmes that seek to address controversial ethical issues through research
- Network with prospective employers through on-campus presentations, talks and mentoring schemes

WHY MANCHESTER?

- One of the top ten law universities in the UK (*THE* World University Ranking by subject 2020).
- More than 140 years' experience in legal education
- One of the UK's broadest ranges of specialisms for law, health care and ethics, and criminology
- Innovative, interdisciplinary programmes that focus on current trends and debates

YOU MIGHT ALSO BE INTERESTED IN...

Alliance Manchester Business School; Criminology; Politics.

LINGUISTICS AND ENGLISH LANGUAGE

 uom.link/pgp-lcl

TAUGHT COURSES

Intercultural Communication MA
Linguistics MA

RESEARCH PROGRAMMES

Linguistics PhD

For a complete list of programmes and contact details please see the directory at the back.

OVERVIEW

Establish a strong foundation in theoretical and empirical linguistics, supported by cutting-edge facilities and our world-leading research community.

What you can expect:

- An unrivalled breadth of theoretical approaches and research specialisms
- Work in close collaboration with internationally recognised experts, specialising in a range of languages
- Study in the most linguistically diverse city in Western Europe – home to more than 150 spoken languages

★ WHY MANCHESTER?

- Modern Languages and Linguistics at Manchester ranked third in the UK for 'research power' (REF 2014)
- Ranked sixth in the UK for linguistics (QS World University Rankings by Subject 2019)
- Manchester offers a vibrant, multicultural language experience and is an ideal location to explore variation, cross-cultural references and social impacts
- Access to innovative resources, including psycholinguistics and phonetics laboratories and the extensive linguistic collections at our National Research Library
- Strong links with cultural bodies such as the Alliance Française and the Instituto Cervantes

? YOU MIGHT ALSO BE INTERESTED IN...

Creative Writing and Contemporary Literature;
Languages and Cultures.

MATERIALS

 uom.link/pgp-materials

TAUGHT COURSES

11 taught courses covering Advanced Engineering Materials, Polymer Science and Engineering, and International Fashion Marketing and Retailing.

RESEARCH PROGRAMMES

12 research themes including Fashion Management and Marketing, Biomaterials, Metallurgy and Corrosion, and Nano and Functional Materials.

For a complete list of programmes and contact details please see the directory at the back.

i OVERVIEW

Join the largest Department of Materials in Europe for a forward-thinking postgraduate qualification designed to meet industry demands.

What you can expect:

- The chance to get involved in multidisciplinary research that delivers significant impact for society and commerce
- Exceptional breadth of expertise in materials engineering, science and technology, textile design and fashion business
- Learn from leading academics and boost your employability with skills-driven courses

★ WHY MANCHESTER?

- Unique capability to process and analyse materials of all types with national research centres in advanced materials, composites, energy materials, performance of materials and imaging of materials
- 100% of our research environment rated 'internationally excellent' (3*) or 'world-leading' (4*) (REF 2014)
- State-of-the-art facilities include an electron microscopy suite, advanced mechanical testing equipment and cell culture labs

? YOU MIGHT ALSO BE INTERESTED IN...

Chemistry; Electrical and Electronic Engineering;
Chemical Engineering and Analytical Science.

MATHEMATICS

 uom.link/pgp-maths

TAUGHT COURSES

Six taught courses covering Actuarial Science, Applied Mathematics, Mathematical Finance, Pure Mathematics, Pure Mathematics and Mathematical Logic, and Statistics.

RESEARCH PROGRAMMES

Nine research themes including Numerical Analysis, Financial Mathematics, Mathematics in Actuarial Science, Pure Mathematics, and Probability.

For a complete list of programmes and contact details please see the directory at the back.

i OVERVIEW

Experience teaching and learning within a major international research centre for mathematics, with expertise across a breadth of specialisms including pure and applied mathematics, statistics and actuarial science.

What you can expect from your course:

- A mix of modern and traditional mathematics courses, offering high-levels of engagement with interdisciplinary research and industry
- Join world-leading research groups and develop the practical and theoretical skills that are sought after by employers or to pursue further study at PhD level
- Join a like-minded community of mathematicians in our purpose-built Alan Turing Building

★ WHY MANCHESTER?

- Ranked sixth in the UK for mathematics and 90% of our research activity was rated 'internationally excellent' (3*) or 'world-leading' (4*) (REF 2014)
- Commended for our provision of PhD training and support (REF 2014)
- Extensive programme of research seminars and expert speakers hosted at the Manchester Institute for Mathematical Sciences

? YOU MIGHT ALSO BE INTERESTED IN...

Computer Science; Physics and Astronomy;
Alliance Manchester Business School.

MECHANICAL ENGINEERING

 uom.link/pgp-mechanical-engineering

TAUGHT COURSES

A range of courses covering Advanced Manufacturing Technology, Mechanical Engineering Design and Thermal Power and Fluid Engineering.

RESEARCH PROGRAMMES

Mechanical Engineering MPhil/PhD

Nuclear Engineering MPhil/PhD

Reliability Engineering and Asset Management DProf

For a complete list of programmes and contact details please see the directory at the back.

i OVERVIEW

Our programmes are amongst the most well-established in the UK, covering a range of specialisms including thermodynamics and mathematical modelling.

What you can expect:

- Stimulating learning environment with access to computation facilities and experimental labs
- Postgraduate researchers can study in multidisciplinary teams with leading academics
- Our taught courses in Mechanical Engineering, Advanced Manufacturing and Thermal Power are accredited by the Institution of Mechanical Engineers

★ WHY MANCHESTER?

- We have been pioneering innovation in engineering since 1824 – Manchester was the first English university to offer a degree in the subject
- Extensive industrial links with companies including Jaguar Land Rover, Airbus and Siemens
- Our graduates have secured roles working for leading companies worldwide

? YOU MIGHT ALSO BE INTERESTED IN...

Aerospace Engineering; Civil Engineering;
Electrical and Electronic Engineering;
Environmental Engineering.

MEDICAL IMAGING SCIENCE

 uom.link/pgp-medical-imaging-sciences

TAUGHT COURSES

Medical Imaging Science MSc/PGDip

RESEARCH PROGRAMMES

Biomedical Imaging Sciences MPhil/PhD

OVERVIEW

Develop your skills in medical imaging science in a multidisciplinary environment alongside physicists, engineers, clinicians and other professionals from a range of fields.

What you can expect:

- Discover the key clinical applications of medical imaging and how it contributes to diagnosis and treatment
- Teaching that incorporates a range of methods, including lectures, group discussions and practical exercises in acquiring images and analysing imaging data
- Benefit from excellent links with local hospitals and research projects embedded in clinical environments
- Our PhD/MPhil Biomedical Imaging Sciences programme enables you to undertake a research project in the field of medical imaging, including neuroimaging, cancer imaging (including mammography), cardiovascular and musculoskeletal imaging

WHY MANCHESTER?

- Ranked seventh in the UK for biological sciences and eighth for medicine (QS World University Rankings 2020)
- Excellent preclinical and clinical imaging facilities on campus and at several hospital sites, including the new PET-MR scanner suite at St Mary's Hospital

YOU MIGHT ALSO BE INTERESTED IN...

Medical Sciences; Biosciences.

MEDICAL SCIENCES

 uom.link/pgp-medical-sciences

TAUGHT COURSES

A range of taught courses covering Clinical Biochemistry, Medical and Molecular Virology, Immunology, Science Communication, Oncology, Reproduction and Pregnancy, and more.

RESEARCH PROGRAMMES

19 research programmes including Cancer Sciences, Developmental Biology, Epidemiology, Gastroenterology, Nutrition, Pharmacology, Stem Cell Research and MD Medicine.

For a complete list of programmes and contact details please see the directory at the back.

OVERVIEW

Join one of the UK's largest medical schools and receive training that will help progress your career.

What you can expect:

- Research training that reflects our dedication to improving understanding of disease processes, diagnosis and enhanced patient care
- Input from educators based in hospitals and specialist NHS services in Greater Manchester
- Make a significant contribution to Manchester's medical research, from investigating the origins of diseases at molecular level through to identifying pharmacological and health service interventions

WHY MANCHESTER?

- Cutting-edge facilities and skilled technicians to support groundbreaking medical research
- 85% of our research is rated 'internationally excellent' (3*) or 'world-leading' (4*) (REF 2014)
- Research students will benefit from training opportunities and support through our Doctoral Academy

YOU MIGHT ALSO BE INTERESTED IN...

Biosciences; Nursing and Midwifery; Pharmacy.

MENTAL HEALTH

 uom.link/pgp-mental-health

TAUGHT COURSES

Advanced Practice Interventions in Mental Health (APIMH) MSc/PGDip

Approved Mental Health Professional Practice (AMHP training) PGCert

RESEARCH PROGRAMMES

Medicine MPhil/MD/PhD

Mental Health MPhil/PhD

Psychiatry MPhil/PhD

For a complete list of programmes and contact details please see the directory at the back.

OVERVIEW

Achieve Approved Mental Health Professional status or become a leader in health psychology with a taught postgraduate course, short professional course or research training at Manchester.

What you can expect:

- Accredited training that is approved by local authorities and the Health and Care Professions Council
- Enhance your current skills with programmes designed for health and social work professionals already working in the field
- Learn about the integration of mental health issues, psychiatry and mental health law in multidisciplinary teams from a social perspective
- Gain insights into how to translate research into real-world application

WHY MANCHESTER?

- Enjoy opportunities for networking and sharing good practice across disciplines
- 83% of our research is rated 'internationally excellent' (3*) or 'world-leading' (4*) (REF 2014)
- Postgraduate research students benefit from training opportunities and support through our Doctoral Academy

YOU MIGHT ALSO BE INTERESTED IN...

Biosciences; Nursing and Midwifery; Psychology and Mental Health.

MUSEOLOGY

 uom.link/pgp-museology

TAUGHT COURSES

Art Gallery and Museum Studies MA

RESEARCH PROGRAMMES

Museology PhD

Museum Practice PhD

For a complete list of programmes and contact details please see the directory at the back.

OVERVIEW

Examine current and emerging museum practices with leading academics in your chosen field.

What you can expect:

- Opportunities to collaborate with museum professionals across the region, UK and internationally
- Experience the latest research, cutting-edge critical approaches and practice
- Placement and research opportunities with institutions such as Tate Liverpool, Imperial War Museum North and the Museum of Science and Industry
- Get involved in live projects with cultural organisations across the city, from collection curation to cultural event production

WHY MANCHESTER?

- Award-winning University cultural resources, including the Whitworth, Manchester Museum and Jodrell Bank Discovery Centre
- The city is internationally renowned for its arts and cultural venues, including HOME, the largest combined arts centre outside of London
- Our practice-based courses have a vocational emphasis and many of our alumni are employed in museums and galleries in the UK and overseas

YOU MIGHT ALSO BE INTERESTED IN...

Art Gallery and Museum Studies; Art History and Visual Studies; Arts Management, Policy and Practice; Arts Management and Cultural Policy; Heritage Studies.

MUSIC

 uom.link/pgp-music

TAUGHT COURSES

Four taught courses covering Composition and Music.

RESEARCH PROGRAMMES

Three research programmes including Composition, Electroacoustic Composition and Musicology.

For a complete list of programmes and contact details please see the directory at the back.

OVERVIEW

Our flexible postgraduate programmes allow you to combine your research interests with solid methodological foundations at one of the UK's leading music departments.

What you can expect:

- Work with world-class academics from a range of disciplines, including historical and contemporary music cultures and composition
- As a composer or sound artist, you'll benefit from one of the liveliest performance cultures of any UK music department
- Regular forums, performance seminars and composition workshops
- Access to dedicated music facilities, including our professional concert hall and cutting-edge music studios

WHY MANCHESTER?

- Home to more professional music-making than any UK city outside of London
- The top music department in the UK (*Sunday Times Good University Guide* 2020)
- 85% of our research outputs are 'internationally excellent' (3*) or 'world-leading' (4*) (REF 2014)
- £8.2 million facilities include the Martin Harris Centre for Music and Drama and award-winning electroacoustic composition studios

YOU MIGHT ALSO BE INTERESTED IN...

Arts Management and Cultural Policy; Arts Management Policy and Practice; Drama.

NURSING AND MIDWIFERY

 uom.link/pgp-nursing-midwifery

TAUGHT COURSES

A range of courses covering Advanced Leadership for Professional Practice, Specialist Practice (Cancer), Advanced Clinical Practice (Paediatrics), Advanced Practice Interventions in Mental Health, Independent Prescribing and Health and Social Care and Research Methods.

RESEARCH PROGRAMMES

Research programmes covering Nursing, Midwifery and Social Work.

For a complete list of programmes and contact details please see the directory at the back.

OVERVIEW

Our wide-ranging study and research opportunities are designed to prepare you for ongoing changes in health and social care policy and practice.

What you can expect:

- Enhance your practice by acquiring, developing and critically appraising your knowledge and skills
- Focus on high-quality applied research that supports the improvement of patient care and shapes UK health and social care policy and service provision
- Benefit from close relationships with NHS trusts across the north-west, providing excellent and varied facilities for clinical practice

WHY MANCHESTER?

- Ranked eighth in the world for nursing (QS World University Rankings 2020)
- One of Europe's leading nursing education and research centres
- Close links with local employers as part of Greater Manchester Social Work Academy, a government-sponsored Teaching Partnership
- 88% of our research is rated 'internationally excellent' (3*) or 'world-leading' (4*) (REF 2014)

YOU MIGHT ALSO BE INTERESTED IN...

Biosciences; Medical Sciences; Psychology and Mental Health; Public Health.

OCCUPATIONAL HYGIENE AND OCCUPATIONAL MEDICINE

 uom.link/pgp-occupational-health-medicine

TAUGHT COURSES

Occupational Hygiene MSc/PGDip/PGCert
Occupational Medicine MSc/AdvDip/PGCert/CDP

RESEARCH PROGRAMMES

Occupational and Environmental Health PhD/CPD

For a complete list of programmes and contact details please see the directory at the back.

OVERVIEW

Ideal for those interested in flexible learning, all our courses are available as part-time, online blended learning programmes.

What you can expect:

- We will equip you with extensive technical knowledge and professional skills in a wide range of disciplines
- An overview of the whole spectrum of medicine and hygiene within the workplace

WHY MANCHESTER?

- Part-time online blended learning allows for flexible study with the benefits of face-to-face teaching (at key points during your study)
- Your studies are supported by experienced occupational hygienists and occupational physicians who regularly contribute to teaching throughout the duration of your programme

OPTOMETRY

 uom.link/pgp-optometry

TAUGHT COURSES

Taught courses in Investigative Ophthalmology and Vision Sciences (Macular Degeneration and Retinal Vascular Disease) and a Professional Certificate in Glaucoma accredited by the College of Optometrists.

RESEARCH PROGRAMMES

Ophthalmology MPhil/PhD
Optometry MPhil/PhD

For a complete list of programmes and contact details please see the directory at the back.

OVERVIEW

Expand your professional knowledge as an optometrist, ophthalmologist, orthoptist or nurse at our specialist £4 million facility.

What you can expect:

- Teaching delivered by experts in their field, including clinical practitioners from Manchester Royal Eye Hospital
- Gain the knowledge needed to pursue a postgraduate degree and to conduct high-quality research in ophthalmology, optometry or vision sciences
- Vision-related professionals will be given an opportunity to advance their knowledge of the scientific foundations of ophthalmology and vision sciences

WHY MANCHESTER?

- We have the longest tradition of teaching optometry in the UK
- Benefit from close links with Manchester Royal Eye Hospital, one of the largest teaching hospitals in Europe, which is globally acknowledged as a centre of excellence
- Learn in excellent facilities that include specialist clinic rooms and dedicated laboratories for non-clinical practical sessions

PHARMACY

 uom.link/pgp-pharmacy

TAUGHT COURSES

A range of courses including Clinical Pharmacy, Advanced Clinical Skills, Independent Prescribing, and Pharmaceutical Industry Advanced Training with multiple pathways.

RESEARCH PROGRAMMES

Four research programmes.

For a complete list of programmes and contact details please see the directory at the back.

OVERVIEW

Our postgraduate programmes are designed to support career development for pharmacy professionals, including hospital or community pharmacy workers and industrial scientists.

What you can expect:

- Training from clinical and healthcare experts in pharmacy and pharmaceutical sciences
- Access to broad research experience, from basic pharmaceutical science to applied pharmacy practice
- Flexible study options, covering full or part-time learning and modular CPD courses
- Enjoy close links with the Centre for Pharmacy Postgraduate Education, a national provider of CPD for pharmacists and pharmacy technicians across England

WHY MANCHESTER?

- We are a leading centre for pharmacy research, judged number one in the UK (REF 2014)
- Close working relationship with local hospitals and industrial partners
- International reputation for research strengths covering cancer biology and drug development, biofilms and infection, and evaluation of pharmacy services

YOU MIGHT ALSO BE INTERESTED IN...

Biosciences; Medical Sciences; Psychology and Mental Health; Public Health.

PHILOSOPHY

 uom.link/pgp-philosophy

TAUGHT COURSES

Philosophy MA
Political Science – Philosophy and Political Theory MA

RESEARCH PROGRAMMES

Philosophy PhD

OVERVIEW

Engage with philosophical study in a stimulating, supportive environment and develop a range of transferable skills to enhance your employability.

What you can expect:

- Enjoy small seminar-style classes with an emphasis on staff and student interaction
- Learn from research-led teaching delivered by experts in a wide range of areas of analytical philosophy
- Extensive research training to provide the skills necessary to complete a master's dissertation
- International conferences hosted by Philosophy at Manchester

WHY MANCHESTER?

- A thriving postgraduate community with dedicated office space for PhD students and annual workshops and conferences for postgraduate students
- Dedicated support to help you with dissertation planning, research and presentation skills
- Join PhilChat, a philosophy group run by postgraduates, designed to introduce undergraduate students to interesting and socially relevant debates within, and related to, philosophy

YOU MIGHT ALSO BE INTERESTED IN...

Politics; Religions and Theology; Social Anthropology.

PHYSICS AND ASTRONOMY

 uom.link/pgp-physics-astronomy

TAUGHT COURSES

Nuclear Science and Technology
MSc/PGDip/PGCert

RESEARCH PROGRAMMES

12 research programmes including Astronomy and Astrophysics, Condensed Matter Physics, Nuclear Physics, Particle Physics, Theoretical Physics, and more.

For a complete list of programmes and contact details please see the directory at the back.

OVERVIEW

Join one of the UK's largest physics and astronomy departments and develop the expertise to tackle some of society's greatest challenges.

What you can expect:

- An exciting research environment, with 13 Nobel Prize winners linked to the department
- Multidisciplinary research with strengths in the applications of big data and advanced materials
- Access world-leading physics facilities, including Jodrell Bank Observatory, the National Graphene Institute, the Photon Science Institute and the Dalton Nuclear Institute

WHY MANCHESTER?

- We are ranked 2nd in the UK, 4th in Europe and 14th globally for physics (Academic Ranking of World Universities 2019)
- Professors Andre Geim and Kostya Novoselov won the 2010 Nobel Prize in Physics for isolating the properties of graphene at Manchester
- Ranked first in the UK for the real-world impact of our research and third in the UK for 'world-leading' (4*) research (REF 2014)
- Juno Champion status for our commitment to equality and diversity (Institute of Physics, 2016)

YOU MIGHT ALSO BE INTERESTED IN...

Chemistry, Aerospace Engineering Electrical and Electronic Engineering; Mathematics.

PLANNING AND ENVIRONMENTAL MANAGEMENT

 uom.link/pgp-planning

TAUGHT COURSES

Nine courses including Planning, Real Estate, Urban Regeneration and Development, Urban Design, and more.

RESEARCH PROGRAMMES

Planning and Environmental Management PhD

For a complete list of programmes and contact details please see the directory at the back.

OVERVIEW

Expand your planning and environmental management knowledge in the world's first industrial city, which is now a vibrant metropolis of major urban change.

What you can expect:

- Selected programmes are accredited by the Royal Town Planning Institute (RTPI) and/or the Royal Institution of Chartered Surveyors (RICS)
- Access to the Manchester Urban Institute, a leading academic institute that brings together interdisciplinary research to inform policy
- Access to our dedicated urban design and planning studio, model-making workshop, IT resources, and libraries and collections
- Boost your employability with skills in thinking critically and creatively

WHY MANCHESTER?

- One of the largest planning departments at any UK university
- Opportunities for international fieldwork
- Manchester has the largest concentration of planning and environmental consultancies in the UK outside London, and we enjoy strong professional links with planners, urban developers, real estate practitioners and environmental managers

YOU MIGHT ALSO BE INTERESTED IN...

Earth and Environmental Sciences; Geography.

POLITICS

 uom.link/pgp-politics

TAUGHT COURSES

21 taught courses covering human rights, international relations, political science and more.

RESEARCH PROGRAMMES

Politics PhD

For a complete list of programmes and contact details please see the directory at the back.

OVERVIEW

Examine the fundamental questions surrounding the study of power in society and how we think, see and live in the world at one of the largest politics departments in the country.

What you can expect:

- A broad education in political studies
- An exciting research environment
- Global community of specialist academic and research staff

WHY MANCHESTER?

- One of the largest and strongest politics departments in the UK, with a long and distinguished history as a centre of research and education
- Distinctive research strengths in analytical political theory, comparative public policy, electoral politics, critical international political economy and poststructuralist international relations
- Home to the British Election Study (BES), one of the longest running election studies worldwide and the oldest social science survey in the UK

YOU MIGHT ALSO BE INTERESTED IN...

History; Law; Philosophy.

MANAGEMENT OF PROJECTS

 uom.link/pgp-mop

TAUGHT COURSES

Four taught MSc courses in Commercial Project Management, Construction Project Management, Engineering Project Management and Management of Projects.

RESEARCH PROGRAMMES

Management of Projects MPhil/PhD

For a complete list of programmes and contact details please see the directory at the back.

OVERVIEW

Prepare yourself for a professional role in project management with an accredited course that enjoys strong links with industry.

What you can expect:

- Gain an understanding of the people-related and technical requirements necessary for the successful management of projects
- MScs are accredited by the Joint Board of Moderators (JBM) and can be used to support applications to become a professional Chartered Engineer
- Drawing on our wide-ranging expertise, we drive innovative solutions to promote successful project management

WHY MANCHESTER?

- Manchester has the largest concentration of planning and environmental consultancies in the UK outside London, and we enjoy strong professional links with planners, urban developers, real estate practitioners and environmental managers
- Strong teaching and research links with industry
- Nearly 200 years' expertise in teaching engineering and many of our graduates have achieved excellence on the international stage

YOU MIGHT ALSO BE INTERESTED IN...

Aerospace Engineering; Electrical and Electronic Engineering; Environmental Science.

PSYCHOLOGY AND MENTAL HEALTH

 uom.link/pgp-psychology-mental-health

TAUGHT COURSES

Seven taught courses covering Clinical and Health Psychology, Health Psychology, Forensic Psychology, Mental Health, Neuroscience, Psychology, and more.

RESEARCH PROGRAMMES

Eight research programmes including Clinical Psychology, Cognitive Neuroscience, Health Psychology and Neuroscience.

Two Professional Doctorates in Clinical Psychology and Forensic Psychology.

For a complete list of programmes and contact details, please see the directory at the back.

OVERVIEW

Specialise in your chosen area of psychology with expert tuition and supervision from leading clinical psychologists.

What you can expect:

- Excellent links to external partners, including NHS trusts across the north-west
- An inspiring and globally-relevant research environment that delivers improved services in international healthcare and education
- Teaching from members of the Manchester Centre for Health Psychology, a group of internationally leading health psychologists

WHY MANCHESTER?

- 83% of our research is rated 'internationally excellent' (3*) or 'world-leading' (4*) (REF 2014).
- Home to the ESRC International Centre for Language and Communicative Development, a major research consortium for child communication
- Research specialisms in interventions to treat psychotic disorders, notably schizophrenia and emotional disorders
- Postgraduate research students benefit from training opportunities and support through our Doctoral Academy

YOU MIGHT ALSO BE INTERESTED IN...

Biosciences; Medical Sciences; Mental Health.

PUBLIC HEALTH AND PRIMARY CARE

 uom.link/pgp-publichealth-primarycare

TAUGHT COURSES

Five public health taught courses with specialisms in public health, global health, primary care, implementation sciences, occupational health, environment and health, dental health, and evidence-based healthcare.

RESEARCH PROGRAMMES

Six research programmes covering Health Economics, Health Informatics, Health Psychology, Health Services and more.

For a complete list of programmes and contact details please see the directory at the back.

OVERVIEW

Career-focused, flexible approaches to study and close NHS links make Manchester a great place to develop the skills and knowledge to help improve people's health.

What you can expect:

- Skills development in areas from management and leadership to research methods
- Substantial training opportunities in epidemiology, public health and primary care
- Choose from modular and online courses, which are ideal for studying around other commitments and building your CPD portfolio
- Support from a dedicated team of e-learning, academic and administration specialists

WHY MANCHESTER?

- Courses tailored to your needs and led by expert tutors with research and service backgrounds in related specialties
- Global alumni network working in organisations including the World Health Organization (WHO), the National Institute for Health and Care Excellence (NICE) and the NHS
- Research students gain training opportunities and support through our Doctoral Academy

YOU MIGHT ALSO BE INTERESTED IN...

Dentistry; Medical Sciences; Social Anthropology; Social Work.

RELIGIONS AND THEOLOGY

 uom.link/pgp-religions-theology

TAUGHT COURSES

Religions and Theology MA

RESEARCH PROGRAMMES

Religions and Theology MPhil/PhD

OVERVIEW

Explore a challenging and thought-provoking programme of study with the vibrant, multi-faith city of Manchester on your doorstep.

What you can expect:

- Specialist teaching across a range of research areas, including ancient and modern languages such as Biblical Greek, Biblical and modern Hebrew, Latin, and Arabic
- Become part of research centres that attracts leading international scholars
- Enjoy access to world-class resources including The John Rylands Library, home to biblical and Jewish papyri, anti-slavery collections and the Methodist and Christian Brethren archives
- Comparative, contextual and multidisciplinary study approaches
- Self-determined study pathways

WHY MANCHESTER?

- We are home to internationally recognised research centres, including The Centre for Jewish Studies, The Centre for Biblical Studies and The Lincoln Theological Institute
- 75% of our research activity was rated 'internationally excellent' (3*) or 'world-leading' (4*) (REF 2014)

YOU MIGHT ALSO BE INTERESTED IN...

Art History and Visual Studies; Classics and Ancient History; Languages and Cultures; Philosophy and Social Anthropology.

SOCIAL ANTHROPOLOGY

 uom.link/pgp-social-anthropology

TAUGHT COURSES

Social Anthropology MA/PGDip

Anthropological Research MA

Visual Anthropology MA

RESEARCH PROGRAMMES

Social Anthropology PhD

Social Anthropology with Visual Media PhD

OVERVIEW

Combine your interest in classical anthropological with cutting-edge research at one of the UK's largest social anthropology departments.

What you can expect:

- Explore a diverse set of research themes covering poverty, race, inequality, international development and more
- Teaching and supervision from staff working on a range of topical global challenges in Latin America, East and Sub-Saharan Africa, Melanesia, India, Japan, Europe and Britain, Kyrgyzstan, Siberia and Lebanon

WHY MANCHESTER?

- Ranked first in the UK for social anthropological research capacity and impact (REF 2014)
- Ranked 5th in the UK for anthropology (QS World University Rankings 2020), with noted expertise in the anthropology of development, materiality, the state, kinship, political economy, science and technology and visual anthropology
- Granada Centre for Visual Anthropology offers unrivalled access to visual anthropology, ethnographic documentary and sensory media training

YOU MIGHT ALSO BE INTERESTED IN...

Languages and Cultures; Philosophy; Religions and Theology.

SOCIAL STATISTICS

 uom.link/pgp-social-statistics

TAUGHT COURSES

Social Research Methods and Statistics MSc/PGDip

Data Science MSc

RESEARCH PROGRAMMES

Social Statistics PhD

OVERVIEW

Courses at Manchester are recognised by the Economic and Social Research Council (ESRC) and designed to develop the statistical and quantitative research skills required to meet key social challenges.

What you can expect:

- Experience a diverse range of subject areas designed to address the growing demand for expertise in social inequalities and population and social network dynamics
- Develop your data analysis skills with software training using real data sets
- Links to partner organisations such as Ipsos Mori and Save the Children

WHY MANCHESTER?

- We have a strong connection with the Cathie Marsh Institute for Social Research (CMI) reflecting our commitment to cross-disciplinary, integrated research
- Graduate programmes recognised by ESRC and the North West Social Science Doctoral Training Partnership
- Ranked first in the UK based on the high percentage of our research activity rated as 'world-leading' (4*) (REF 2014)

YOU MIGHT ALSO BE INTERESTED IN...

Mathematics.

SOCIAL WORK

 uom.link/pgp-social-work

TAUGHT COURSES

Social Work MA

RESEARCH PROGRAMMES

Social Work MPhil/PhD

Social Work (four-year programme) PhD

OVERVIEW

Gain a recognised professional social work qualification and become eligible to register as a qualified social worker with Social Work England.

What you can expect:

- Excellent, high-quality teaching, support and supervision from staff who actively undertake research in health and social care
- Enjoy partnership working through an interactive teaching environment that involves service users, carers and current social work practitioners
- Focused pre-placement support via taught skills days utilising our purpose-built simulation suites
- Undertake two practical placements in social work agencies, which provide hands-on experience

WHY MANCHESTER?

- We are a key member of the Greater Manchester Social Work Academy – a government-sponsored Teaching Partnership – and work in close collaboration with local authorities and organisations across the region

YOU MIGHT ALSO BE INTERESTED IN...

Nursing and Midwifery; Mental Health.

SOCIOLOGY

uom.link/pgp-sociology

TAUGHT COURSES

Sociology MA/PGDip
Sociological Research MSc

RESEARCH PROGRAMMES

Sociology PhD

OVERVIEW

Gain the skills to analyse and interpret contemporary social developments and problems at one of the UK's largest and most prestigious centres for the discipline.

What you can expect:

- A broad range of teaching and research expertise covering all areas of contemporary sociology
- Access to a world-class library and active participation in our department's research seminars, reading groups and conferences
- Develop your analytical and investigative skills through training in methods of social investigation, independent thinking, research and analysis
- Option to pursue a skills-based course with practical training that is highly regarded within government and academia

★ WHY MANCHESTER?

- Ranked first in the UK for the percentage of our research outputs judged as 'world-leading', and second nationally for our research power (REF 2014)
- Ranked within the top five UK universities for sociology (*THE* World University Rankings by Subject 2020)
- A thriving sociology society and peer mentoring scheme
- Expert supervision on contemporary sociology and related projects

? YOU MIGHT ALSO BE INTERESTED IN...

Public Health; Social Anthropology; Social Work.

TRANSLATING, INTERPRETING AND INTERCULTURAL STUDIES

uom.link/pgp-translation-intercultural-studies

TAUGHT COURSES

Intercultural Communication MA
Translation and Interpreting Studies MA/PGDip

RESEARCH PROGRAMMES

Interpreting Studies PhD
Translation and Intercultural Studies PhD

i OVERVIEW

We are home to one of the UK's largest concentrations of translation and interpretation specialists. Their expertise covers a range of topics, from translation and conflict to sociological models of interpreting.

What you can expect:

- Access weekly research seminars, training masterclasses, international conferences and workshops via our Centre for Translation and Intercultural Studies
- Specialise in a range of diverse disciplines, including technical translation, audio-visual translation and translating for international organisations
- Hone your technical skills with industry-standard translation software

★ WHY MANCHESTER?

- Learn the latest translation technologies via our practical course units
- Ranked third in the UK for research power (REF 2014)
- Become part of our dedicated Centre for Translation and Interpreting Studies; home to a vibrant community of doctoral, early-career and more experienced researchers

? YOU MIGHT ALSO BE INTERESTED IN...

Languages and Cultures.

Programme directory

The following pages contain a complete list of postgraduate taught and research programmes available at Manchester.

Explore by your area of interest and discover all related programmes within a particular subject, School or Faculty.

Use the page numbers alongside subject listings to navigate to detailed information and visit our website to find out more.

KEY

FT Full-time
PT Part-time



TAUGHT/ RESEARCH COURSE		CAMPUS	ONLINE/ BLENDED	DISCOVER MORE	PAGE
AEROSPACE ENGINEERING					
T	Aerospace Engineering (MSc)	FT		uom.link/pgp-aerospace-eng-masters	50
R	Aerospace Engineering (MPhil/PhD)	FT PT		uom.link/pgp-aerospace-eng-research	50
ALLIANCE MANCHESTER BUSINESS SCHOOL					
T	Accounting (MSc)	FT		uom.link/pgp-mbs-masters	50
	Accounting and Finance (MSc)	FT			50
	Business Analysis and Strategic Management (MSc)	FT			50
	Business Analytics: Operational Research and Risk Analysis (MSc)	FT			50
	Business Psychology (MSc)	FT			50
	Finance (MSc)	FT			50
	Financial Management (MSc)		PT		50
	Human Resource Management and Industrial Relations (MSc)	FT			50
	Innovation Management and Entrepreneurship (MSc)	FT PT			50
	International Business and Management (MSc)	FT			50
	International Human Resource Management and Comparative Industrial Relations (MSc)	FT			50
	Management (MSc)	FT			50
	Manchester MBA	FT		uom.link/pgp-ftmba	50
	Manchester Global MBA		PT	uom.link/pgp-ptmba	50
	Manchester Global MBA (Finance) (Accelerated)		PT	uom.link/pgp-mbs-masters	50
	Marketing (MSc)	FT			50
	Operations, Project and Supply Chain Management (MSc)	FT			50
	Organisational Psychology (MSc)	FT			50
	Quantitative Finance (MSc)	FT			50
	The Kelley-Manchester Global MBA		PT	uom.link/pgp-kelley-manchester	50
R	Accounting and Finance (MPhil/PhD)	FT PT		uom.link/pgp-mbs-research	50
	Business and Management (MPhil/PhD)	FT PT			50
	Doctor of Business Administration (DBA)		PT		50
	Management (MRes)	FT			50
	Science, Technology and Innovation Policy (PhD)	FT			50
ARCHAEOLOGY					
R	Archaeology (PhD)	FT PT		uom.link/pgp-archaeology-research	51
ARCHITECTURE					
T	Architecture and Urbanism (MA)	FT PT		uom.link/pgp-architecture-masters	51
	Master of Architecture (MArch)	FT			51
R	Architecture (PhD)	FT PT		uom.link/pgp-architecture-research	51
ART HISTORY AND VISUAL STUDIES					
R	Art History and Visual Studies (PhD)	FT PT		uom.link/pgp-ahvs-research	52
ARTS MANAGEMENT AND CULTURAL POLICY					
T	Arts Management, Policy and Practice (MA)	FT PT		uom.link/pgp-amcp-masters	52
R	Arts and Cultural Management (PhD)	FT PT		uom.link/pgp-amcp-research	52
	Arts Management and Cultural Policy (PhD)	FT PT			52

TAUGHT/ RESEARCH COURSE		CAMPUS	ONLINE/ BLENDED	DISCOVER MORE	PAGE
AUDIOLOGY					
T	Advanced Audiology Studies (MSc/PGDip)	FT PT		uom.link/pgp-audiology-masters	53
	Advanced Audiology Studies (Paediatric Pathway) (MSc)	FT PT			53
	Audiology (MSc)	FT			53
R	Audiology (MPhil/PhD)	FT PT		uom.link/pgp-audiology-research	53
	Communication Disorders (MPhil/PhD)	FT PT			53
BIOSCIENCES					
T	Biochemistry (MSc)	FT		uom.link/pgp-biosciences-masters	53
	Bioinformatics and Systems Biology (MSc)	FT			53
	Biological Sciences (MSc)	FT			53
	Biomedical Egyptology (MSc/PGDip/PGCert)		PT	PT	53
	Biotechnology and Enterprise (MSc)	FT			53
	Cancer Research and Molecular Biomedicine (MSc)	FT			53
	Cell Biology (MSc)	FT			53
	Clinical Bioinformatics (PGCert)		PT	PT	53
	Clinical Rheumatology and Musculoskeletal Medicine (MSc/PGCert)		PT		53
	Developmental Biology (MSc)	FT			53
	Genomic Medicine (MSc/PGDip/PGCert/CPD)	FT PT			53
	History of Science, Technology and Medicine (MSc)	FT PT			53
	Infection Biology (MRes)	FT			53
	Medical Microbiology (MSc/PGDip)	FT PT			53
	Neuroimaging for Clinical and Cognitive Neuroscience (MSc)	FT			53
	Neuroscience (MSc)	FT			53
	Precision Medicine (MSc/PGCert)	FT			53
	Science Communication (MSc)	FT PT			53
	Skin Ageing and Aesthetic Medicine (MSc/PGDip/PGCert)		PT	PT	53
	Tissue Engineering for Regenerative Medicine (MRes)	FT			53
R	A*STAR (PhD)	FT		uom.link/pgp-biosciences-research	53
	BBSRC Doctoral Training Partnership (PhD)	FT			53
	Biochemistry (MPhil/PhD)	FT PT			53
	Bioinformatics (MPhil/PhD)	FT PT			53
	Biomedical Imaging Sciences (MPhil/PhD)	FT PT			53
	Biostatistics (MPhil/PhD)	FT PT			53
	Biotechnology (MPhil/PhD)	FT PT			53
	Cell Biology (MPhil/PhD)	FT PT			53
	Cell Matrix Research (MPhil/PhD)	FT PT			53
	Cognitive Neuroscience (PhD)	FT PT			53
	Dermatological Sciences (MPhil/PhD)	FT PT			53
	Environmental Biology (MPhil/PhD)	FT PT			53
	Evolutionary Biology (MPhil/PhD)	FT PT			53
	Genetics (MPhil/PhD)	FT PT			53
	Genomics (MPhil/PhD)	FT PT			53
	Immunology (MPhil/PhD)	FT PT			53
	Infectious Diseases (MPhil/PhD)	FT PT			53
	Inflammation Sciences (MPhil/PhD)	FT PT			53
	Medicine (MPhil/MD/PhD)	FT PT			53
	Microbiology (MPhil/PhD)	FT PT			53

TAUGHT/ RESEARCH COURSE	CAMPUS	ONLINE/ BLENDED	DISCOVER MORE	PAGE
BIOSCIENCES (CONTINUED)				
R Molecular Biology (MPhil/PhD)	FT PT		uom.link/pgp-biosciences-research	53
Musculoskeletal (MPhil/PhD)	FT PT			53
Neuroscience (MPhil/PhD)	FT PT			53
Nutrition (MPhil/PhD)	FT PT			53
Pharmacology (MPhil/PhD)	FT PT			53
Physiology (MPhil/PhD)	FT PT			53
Plant Science (MPhil/PhD)	FT PT			53
Stem Cell Research (MPhil/PhD)	FT PT			53
Structural Biology (MPhil/PhD)	FT PT			53
CHEMICAL ENGINEERING AND ANALYTICAL SCIENCE				
T Advanced Chemical Engineering (MSc)	FT		uom.link/pgp-ceas-masters	54
Advanced Process Integration and Design (MSc)	FT			54
Subsurface Energy Engineering (MSc)	FT			54
R Advanced Functional Materials and Analytical Science (PhD/MPhil/MSc by Research)	FT PT		uom.link/pgp-ceas-research	54
Biochemical and Bioprocess Engineering (MPhil/PhD)	FT PT			54
Catalysis and Porous Materials (PhD/MPhil/MSc by Research)	FT PT			54
Integrated Catalysis CDT (PhD)	FT			54
Chemical Engineering (PhD/MPhil/MSc by Research)	FT PT			54
Multi-Scale Modelling (PhD/MPhil/MSc by Research)	FT PT			54
Process Integration (PhD/MPhil/MSc by Research)	FT PT			54
Sustainable Industrial Systems (PhD/MPhil/MSc by Research)	FT PT			54
CHEMISTRY				
T Chemistry (MSc)	FT		uom.link/pgp-chemistry-masters	54
Analytical Science (MSc)		PT		54
R Biocatalysis (PhD)	FT		uom.link/pgp-chemistry-research	54
Biological Chemistry (MPhil/PhD)	FT PT			54
Biotechnology (PhD)	FT			54
Chemistry (MPhil/PhD/MSc by Research)	FT PT			54
Inorganic Chemistry (MPhil/PhD)	FT PT			54
Materials Chemistry (MPhil/PhD)	FT PT			54
Organic Chemistry (MPhil/PhD)	FT PT			54
Physical Chemistry (MPhil/PhD)	FT PT			54
Synthetic and Systems Biology (PhD)	FT			54
Theoretical Chemistry (MPhil/PhD)	FT PT			54
CIVIL ENGINEERING				
T Structural Engineering (MSc)	FT		uom.link/pgp-civil-eng-masters	55
R Civil Engineering (MPhil/PhD)	FT PT		uom.link/pgp-civil-eng-research	55
CLASSICS, ANCIENT HISTORY AND EGYPTOLOGY				
T Classics and Ancient History (MA)	FT PT		uom.link/pgp-classics-masters	55
Egyptology (MA)		PT		55
R Classics and Ancient History (PhD)	FT PT		uom.link/pgp-classics-research	55
Egyptology (PhD)	FT PT			55
COMPUTER SCIENCE				
T Advanced Computer Science (MSc)	FT PT		uom.link/pgp-cs-masters	56
ACS: Advanced Web Technologies (MSc)	FT PT			56

TAUGHT/ RESEARCH COURSE	CAMPUS	ONLINE/ BLENDED	DISCOVER MORE	PAGE
COMPUTER SCIENCE (CONTINUED)				
T ACS: Artificial Intelligence (MSc)	FT PT		uom.link/pgp-cs-masters	56
ACS: Computer Security (MSc)	FT			56
ACS: Data and Knowledge Management (MSc)	FT			56
ACS: Digital Biology (MSc)	FT			56
ACS: Semantic Technologies (MSc)	FT PT			56
ACS: Software Engineering (MSc)	FT			56
Data Science (Computer Science Data Informatics) (MSc)	FT			56
R Computer Science (MPhil/PhD)	FT PT		uom.link/pgp-cs-research	56
Computer Systems Engineering (EngD)	FT			56
Data Engineering (EngD)	FT			56
Software Systems Engineering (EngD)	FT			56
CREATIVE WRITING AND CONTEMPORARY LITERATURE				
T Creative Writing (MA)	FT PT		uom.link/pgp-creative-writing-masters	56
Modern and Contemporary Literature (MA)	FT PT			56
Playwriting (MA)	FT			56
Screenwriting (MA)	FT			56
R Creative Writing (PhD)	FT PT		uom.link/pgp-creative-writing-research	56
DEAF EDUCATION				
T Deaf Education (MSc/PGDip)	FT PT	PT	uom.link/pgp-deaf-education-masters	57
DENTISTRY				
T Advanced Restorative Dentistry (MSc/PGDip/PGCert)		PT	uom.link/pgp-dentistry-masters	58
Clinical Dentistry (Paediatric Dentistry) (MSc)	FT			58
Dental Public Health (MDPH/PGDip/PGCert/MRes)		FT PT		58
Endodontics (MSc) (Clin)	FT			58
Endodontics (Dental Specialties) (MSc)	FT			58
Evidence-Based Healthcare (MSc)		FT PT		58
Fixed and Removable Prosthodontics (Dental Specialties) (MSc)	FT PT			58
Fixed and Removable Prosthodontics (MSc) (Clin)	FT			58
Oral and Maxillofacial Surgery (MSc) (Clin)	FT			58
Oral and Maxillofacial Surgery (Dental Specialties) (MSc/PGDip)	FT PT			58
Orthodontics (MSc) (Clin)	FT			58
Periodontology (MSc) (Clin)	FT			58
R Basic Dental Sciences (MPhil/PhD)	FT PT		uom.link/pgp-dentistry-research	58
Biomaterials Science and Dental Technology (MPhil/PhD)	FT PT			58
Clinical Dentistry (PhD)	FT			58
Dental Health Science (MPhil/PhD)	FT			58
Endodontics (MPhil/PhD)	FT PT			58
Oral and Maxillofacial Surgery (MPhil/PhD)	FT PT			58
Orthodontics (MPhil/PhD)	FT PT			58
Prosthodontics (MPhil/PhD)	FT PT			58
DRAMA				
T Film Studies (MA)	FT PT		uom.link/pgp-drama-masters	58
Playwriting (MA)	FT			58
R Anthropology, Media and Performance (PhD)	FT PT		uom.link/pgp-drama-research	58
Applied Theatre (PhD)	FT PT			58
Drama (PhD)	FT PT			58

TAUGHT/ RESEARCH COURSE		CAMPUS	ONLINE/ BLENDED	DISCOVER MORE	PAGE
EARTH AND ENVIRONMENTAL SCIENCES					
T	Petroleum Exploration Geoscience (MSc)	FT		uom.link/pgp-ees-masters	59
	Petroleum Geoscience for Reservoir Development and Production (MSc)	FT			59
	Pollution and Environmental Control (MSc)	FT			59
R	Atmospheric Sciences (MPhil/PhD)	FT PT		uom.link/pgp-ees-research	59
	Basin Studies and Petroleum Geoscience (MPhil)	FT PT			59
	Bioarchaeology (MPhil/PhD)	FT PT			59
	Biomolecular Sciences (MPhil/PhD)	FT PT			59
	Biotechnology (MPhil/PhD)	FT PT			59
	Earth, Atmospheric and Environmental Sciences (MPhil)	FT PT			59
	Earth Science (MPhil/PhD)	FT PT			59
	Environmental Science (MPhil/PhD)	FT PT			59
	Environmental Geochemistry and Geomicrobiology (MPhil/PhD)	FT PT			59
	Ecology and Evolution (MPhil/PhD)	FT PT			59
	Evolutionary Biology (MPhil/PhD)	FT			59
	Planetary Science (MPhil/PhD)	FT PT			59
	Palaeontology (MPhil/PhD)	FT PT			59
	Planetary Science (MPhil/PhD)	FT PT			59
ECONOMICS					
T	Economics (MA)	FT PT		uom.link/pgp-economics-masters	59
	Economics (MSc)	FT PT			59
	Financial Economics (MSc)	FT PT			59
R	Economics (PhD)	FT		uom.link/pgp-economics-research	59
EDUCATION					
T	Digital Technologies, Communication and Education (MA)	FT PT	PT	uom.link/pgp-education-masters	60
	Educational Leadership (MA)	FT			60
	Educational Leadership in Practice (MA)		PT		60
	Intercultural Communication (MA)	FT PT			60
	International Education (MA)	FT			60
	Psychology of Education (MEd)	FT PT			60
	Research Methods with Education (MSc)	FT			60
	TESOL (MA)	FT PT			60
	Counselling Psychology (DCounsPsych)	FT		uom.link/pgp-education-research	60
	Education (PhD)	FT PT			60
R	Educational and Child Psychology (DEdChPsychol)	FT			60
	PGCE Primary*	FT		uom.link/pgp-education-pgce	60
POSTGRADUATE TEACHER TRAINING	PGCE Secondary Biology*	FT		*Direct school route available	60
	PGCE Secondary Business Education*	FT			60
	PGCE Secondary Chemistry*	FT			60
	PGCE Secondary Economics and Business Education*	FT			60
	PGCE Secondary English*	FT			60
	PGCE Secondary French*	FT			60
	PGCE Secondary Geography*	FT			60
	PGCE Secondary German*	FT			60
	PGCE Secondary History*	FT			60
	PGCE Secondary Mathematics*	FT			60
	PGCE Secondary Physics*	FT			60
	PGCE Secondary Physics with Mathematics	FT			60
	PGCE Secondary Spanish*	FT			60

TAUGHT/ RESEARCH COURSE		CAMPUS	ONLINE/ BLENDED	DISCOVER MORE	PAGE
ELECTRICAL AND ELECTRONIC ENGINEERING					
T	Advanced Control and Systems Engineering (MSc)	FT		uom.link/pgp-eee-masters	60
	Advanced Control and Systems Engineering with Extended Research (MSc)	FT			60
	Communications and Signal Processing (MSc)	FT			60
	Communications and Signal Processing with Extended Research (MSc)	FT			60
	Electrical Power Systems Engineering (MSc/PGDip/PGCert)		PT		60
	Electrical Power Systems Engineering (MSc)	FT			60
	Renewable Energy and Clean Technology (MSc)	FT			60
	Renewable Energy and Clean Technology with Extended Research (MSc)	FT			60
	Advanced Electrical Power Systems Engineering (MSc)	FT			60
	Electrical and Electronic Engineering (MPhil/PhD)	FT PT		uom.link/pgp-eee-research	60
ENGLISH AND AMERICAN STUDIES					
T	English Literature and American Studies (MA)	FT PT		uom.link/pgp-english-masters	61
	Gender, Sexuality and Culture (MA/PGDip)	FT PT			61
	Modern and Contemporary Literature (MA)	FT PT			61
R	English and American Studies (PhD)	FT PT		uom.link/pgp-english-research	61
ENVIRONMENTAL ENGINEERING					
R	Environmental Engineering (MPhil/PhD)	FT PT		uom.link/pgp-environmental-eng-research	61
GEOGRAPHY					
T	Environmental Governance (MSc)	FT PT		uom.link/pgp-geography-masters	62
	Environmental Monitoring, Modelling and Reconstruction (MSc)	FT PT			62
	Geographical Information Science (MSc)	FT PT			62
	Research Methods with Human Geography (MSc)	FT			62
R	Human Geography (PhD)	FT PT		uom.link/pgp-geography-research	62
	Physical Geography (PhD)	FT PT			62
HEALTH DATA SCIENCE					
T	Health Data Science (MSc/PGDip)	FT PT		uom.link/pgp-hds-masters	62
	Health Data Science (PGCert)	FT PT	PT		62
	Health Informatics (MSc/PGDip/PGCert)	FT PT			62
	Clinical Bioinformatics (PGCert)		PT		62
	Bioinformatics (MPhil/PhD)	FT PT		uom.link/pgp-hds-research	62
R	Epidemiology (MPhil/PhD)	FT PT	FT PT		62
	Health Economics (MPhil/PhD)	FT PT			62
	Health Informatics (MPhil/PhD)	FT PT			62
	Health Psychology (MPhil/PhD)	FT PT			62
	Primary Care and Health Services Research (MPhil/PhD)	FT PT			62
	Public Health (MPhil/PhD)	FT PT			62
					62
HERITAGE STUDIES					
T	Heritage Studies (MA/PGDip)	FT PT		uom.link/pgp-heritage-studies-masters	63
R	Museology (PhD)	FT PT		uom.link/pgp-heritage-studies-research	63/69
	Museum Practice (PhD)	FT PT			69
HISTORY					
T	History (MA)	FT PT		uom.link/pgp-history-masters	63
	History of Science, Technology and Medicine (MSc)	FT PT			63
	Medieval and Early Modern Studies (MA)	FT PT			63
R	History (MPhil/PhD)	FT PT		uom.link/pgp-history-research	63

TAUGHT/ RESEARCH COURSE	CAMPUS	ONLINE/ BLENDED	DISCOVER MORE	PAGE
HUMANITARIANISM, CONFLICT RESPONSE, DISASTER MANAGEMENT AND PEACEBUILDING				
T Global Health (MSc/PGCert/PGDip)		PT	uom.link/pgp-hcri-masters	64
Humanitarian Practice (MSc/PGDip/PGCert)	FT PT	FT PT		64
Humanitarianism and Conflict Response (MA)	FT PT			64
International Disaster Management (MSc)	FT PT			64
R Humanitarianism and Conflict Response (PhD)	FT PT		uom.link/pgp-hcri-research	64
INTERNATIONAL DEVELOPMENT				
T Development Economics and Policy (MSc)	FT PT		uom.link/pgp-international-development-masters	64
Development Finance (MSc)	FT PT			64
Global Urban Development and Planning (MSc)	FT PT			64
Human Resource Development (International Development) (MSc)	FT PT			64
Human Resource Development and Management (International Development) (MSc)	FT PT	PT		64
ICTs for Development (MSc)	FT PT			64
International Development (MSc)	FT PT			64
International Development: Development Management (MSc)	FT PT			64
International Development: Environment, Climate Change and Development (MSc)	FT PT			64
International Development: Globalisation, Trade and Industry (MSc)	FT PT			64
International Development: Politics, Governance and Development Policy (MSc)	FT PT			64
International Development: Poverty, Conflict and Reconstruction (MSc)	FT PT			64
International Development: Poverty, Inequality and Development (MSc)	FT PT			64
International Development: Public Policy and Management (MSc)	FT PT			64
Leadership for Development		PT		64
Management and Implementation of Development Projects (MSc)	FT PT			64
Management and Information Systems: Change and Development (MSc)	FT PT	PT		64
Organisational Change and Development (MSc)	FT PT			64
Research Methods with International Development (MSc)	FT			64
R Development Policy and Management (PhD)	FT PT		uom.link/pgp-international-development-research	64
LANGUAGES AND CULTURES				
T Modern Languages and Cultures (MA)	FT PT		uom.link/pgp-languages-masters	65
R Arab World Studies (PhD)	FT		uom.link/pgp-languages-research	65
Chinese Studies (MPhil/PhD)	FT PT			65
East Asian Studies (MPhil/PhD)	FT PT			65
French Studies (MPhil/PhD)	FT PT			65
German Studies (MPhil/PhD)	FT PT			65
Italian Studies (MPhil/PhD)	FT PT			65
Japanese Studies (MPhil/PhD)	FT PT			65
Latin American Cultural Studies (MPhil/PhD)	FT PT			65
Middle Eastern Studies (MPhil/PhD)	FT PT			65
Portuguese Studies (MPhil/PhD)	FT PT			65
Russian and East European Studies (MPhil/PhD)	FT PT			65
Spanish Studies (MPhil/PhD)	FT PT			65

TAUGHT/ RESEARCH COURSE	CAMPUS	ONLINE/ BLENDED	DISCOVER MORE	PAGE
LAW AND CRIMINOLOGY				
T Criminology (MA/MRes/PGDip)	FT PT		uom.link/pgp-crim-masters	57
Criminology (Social Statistics) (MRes)	FT PT			57
Corporate Governance (LLM)	FT		uom.link/pgp-law-masters	65
Healthcare Ethics (PGCert/PGDip)	FT	PT		65
Healthcare Ethics and Law (LLM/MA/PGDip)	FT PT	PT		65
Healthcare Ethics and Law (Intercalated) (MSc)	FT			65
Healthcare Law (PGCert)	FT	PT		65
Intellectual Property Law (LLM)	FT			65
International Business and Commercial Law (LLM)	FT			65
International Financial Law (LLM)	FT			65
International Economic Law (LLM)	FT			65
Law (LLM)	FT			65
Public International Law (LLM)	FT PT			65
Security and International Law (LLM/MA)	FT PT			65
Transnational Dispute Resolution (LLM)	FT PT			65
R Criminology (PhD)	FT PT		uom.link/pgp-crim-research	57
Bioethics and Medical Jurisprudence (PhD)	FT PT		uom.link/pgp-law-research	65
Law (PhD)	FT PT			65
LINGUISTICS AND ENGLISH LANGUAGE				
T Intercultural Communication (MA)	FT PT		uom.link/pgp-lcl-masters	66
Linguistics (MA)	FT PT			66
R Linguistics (PhD)	FT PT		uom.link/pgp-lcl-research	66
MATERIALS				
T Advanced Engineering Materials (MSc)	FT		uom.link/pgp-materials-masters	66
Biomaterials (MSc)	FT			66
Corrosion Control Engineering (MSc)	FT			66
International Fashion Marketing (MSc)	FT	FT PT		66
International Fashion Retailing (MSc)	FT			66
International Fashion Retailing (Business Process Improvement) (MSc)	FT			66
International Fashion Retailing (Multichannel Marketing) (MSc)	FT			66
Nanomaterials (MSc)	FT			66
Polymer Materials Science and Engineering (MSc)	FT			66
Textile Technology (Technical Textiles) (MSc)	FT			66
R Advanced Metallic Systems CDT (PhD)	FT		uom.link/pgp-materials-research	66
Biomaterials (MPhil/MSc by Research/PhD)	FT PT			66
Coatings and Ceramics (MPhil/MSc by Research/PhD)	FT PT			66
Imaging and Characterisation (MPhil/MSc by Research/PhD)	FT PT			66
Fashion Management and Marketing (MPhil/MSc by Research/PhD)	FT PT			66
Fusion Energy CDT Materials (PhD)	FT			66
Materials (MPhil/MSc by Research/PhD)	FT PT			66
Metallurgy and Corrosion (MPhil/MSc by Research/PhD)	FT PT			66
Nano and Functional Materials (MPhil/MSc by Research/PhD)	FT PT			66
Polymers and Composites (MPhil/MSc by Research/PhD)	FT PT			66
Textiles and Apparel (MPhil/MSc by Research/PhD)	FT PT			66

TAUGHT/ RESEARCH COURSE		CAMPUS	ONLINE/ BLENDED	DISCOVER MORE	PAGE
MATHEMATICS					
T	Actuarial Science (MSc)	FT PT		uom.link/pgp-maths-masters	67
	Applied Mathematics (MSc)	FT PT			67
	Mathematical Finance (MSc)	FT			67
	Pure Mathematics (MSc)	FT PT			67
	Pure Mathematics and Mathematical Logic (MSc)	FT PT			67
	Statistics (MSc)	FT PT			67
R	Applied Mathematics (PhD)	FT PT		uom.link/pgp-maths-research	67
	Financial Mathematics (PhD)	FT PT			67
	Mathematical Logic (PhD)	FT PT			67
	Mathematical Sciences (MPhil)	FT PT			67
	Mathematics in Actuarial Science (PhD)	FT			67
	Numerical Analysis (PhD)	FT PT			67
	Probability (PhD)	FT PT			67
	Pure Mathematics (PhD)	FT PT			67
	Statistics (PhD)	FT PT			67
MECHANICAL ENGINEERING					
T	Advanced Manufacturing Technology and Systems Management (MSc)	FT		uom.link/pgp-mech-eng-masters	67
	Mechanical Engineering Design (MSc)	FT			67
	Reliability Engineering and Asset Management (MSc/PGDip/PGCert)	FT PT	PT		67
	Thermal Power and Fluid Engineering (MSc)	FT			67
	Renewable Energy and Clean Technology (MSc)	FT			67
R	Mechanical Engineering (MPhil/PhD)	FT PT		uom.link/pgp-mech-eng-research	67
	Nuclear Engineering (MPhil/PhD)	FT PT			67
	Reliability Engineering and Asset Management (DProf)	PT			67
MEDICAL IMAGING SCIENCE					
T	Medical Imaging Science (MSc/PGDip)	FT PT		uom.link/pgp-medical-imaging-masters	68
R	Biomedical Imaging Sciences (MPhil/PhD)	FT PT		uom.link/pgp-medical-imaging-research	68
MEDICAL SCIENCES					
T	Advanced Therapy Medical Products (MSc/PGDip/PGCert)	FT PT		uom.link/pgp-medical-sciences-masters	68
	Cancer Biology and Radiotherapy Physics (MSc/PGDip/PGCert)	FT PT			68
	Cardiovascular Health and Disease (MRes)	FT			68
	Clinical Biochemistry (MSc)	FT PT			68
	Clinical Immunology (MSc/PGDip)	FT PT			68
	Experimental Medicine (Cancer) (MRes/PGCert)	FT PT			68
	Experimental Medicine (Dermatology) (MRes/PGCert)	FT PT			68
	Experimental Medicine (Hearing Health) (MRes/PGCert)	FT PT			68
	Experimental Medicine (Musculoskeletal) (MRes/PGCert)	FT PT			68
	Experimental Medicine (Respiratory) (MRes/PGCert)	FT PT			68
	History of Science, Technology and Medicine (MSc)	FT PT			68
	Medical and Health Education (PGCert)		PT		68
	Medical and Molecular Virology (MSc/PGCert)	FT PT			68
	Medical Microbiology (MSc/PGDip)	FT PT			68
	Medical Sciences (MRes)	FT			68

TAUGHT/ RESEARCH COURSE		CAMPUS	ONLINE/ BLENDED	DISCOVER MORE	PAGE
MEDICAL SCIENCES (CONTINUED)					
T	Molecular Pathology (MSc/PGDip/PGCert)	FT PT		uom.link/pgp-medical-sciences-masters	68
	Oncology (MRes)	FT			68
	Paediatric Anaesthesia (PGCert)	PT			68
	Physician Associate Studies (MSc/PGDip)	FT			68
	Reproduction and Pregnancy (MRes)	FT			68
	Science Communication (MSc)	FT PT			68
R	BHF PhD Programme (PhD)	FT		uom.link/pgp-medical-sciences-research	68
	Clinical Sciences (MPhil/PhD)	FT PT			68
	Cancer Sciences (MPhil/PhD)	FT PT			68
	Cardiovascular Sciences (MPhil/PhD)	FT PT			68
	Developmental Biology (MPhil/PhD)	FT PT			68
	Endocrinology and Diabetes (MPhil/PhD)	FT PT			68
	Epidemiology (MPhil/PhD)	FT PT			68
	Gastroenterology (MPhil/PhD)	FT PT			68
	History of Science, Technology and Medicine (MPhil/PhD)	FT PT			68
	Medical Genetics (MPhil/PhD)	FT PT			68
	Medical Microbiology (MPhil/PhD)	FT PT			68
	Medical Mycology (MPhil/PhD)	FT PT			68
	Medical Virology (MPhil/PhD)	FT PT			68
	Medicine (MPhil/MD/PhD)	FT PT			68
	MRC DTP (PhD)	FT			68
	Nutrition (MPhil/PhD)	FT PT			68
	Reproductive Sciences (MPhil/PhD)	FT PT			68
	Stem Cell Research (MPhil/PhD)	FT PT			68
	Wellcome Trust (Immunomatrix in Complex Disease) (PhD)	FT			68
MENTAL HEALTH					
T	Advanced Practice Interventions in Mental Health (APIMH) (MSc/PGDip)	PT		uom.link/pgp-mental-health-masters	69
	Approved Mental Health Professional Practice (AMHP training) (PGCert)	PT			69
R	Medicine (MPhil/MD/PhD)	FT PT		uom.link/pgp-mental-health-research	69
	Mental Health (MPhil/PhD)	FT PT			69
	Psychiatry (MPhil/PhD)	FT PT			69
MUSEOLOGY					
T	Art Gallery and Museum Studies (MA)	FT PT		uom.link/pgp-museology-masters	63/ 69
R	Museology (PhD)	FT PT		uom.link/pgp-museology-research	69
	Museum Practice (PhD)	FT PT			69
MUSIC					
T	Composition (Electroacoustic Music and Interactive Media) (MusM)	FT PT		uom.link/pgp-music-masters	70
	Composition (Instrumental and Vocal) (MusM)	FT PT			70
	Music (Ethnomusicology) (MusM)	FT PT			70
	Music (Musicology) (MusM)	FT PT			70
R	Music (Composition) (PhD)	FT PT		uom.link/pgp-music-research	70
	Music (Electroacoustic Composition) (PhD)	FT PT			70
	Music (Musicology) (PhD)	FT PT			70

TAUGHT/ RESEARCH COURSE		CAMPUS	ONLINE/ BLENDED	DISCOVER MORE	PAGE
NURSING AND MIDWIFERY					
T	Advanced Leadership for Professional Practice (MSc)	PT		uom.link/pgp-nursing-masters	70
	Advanced Leadership for Professional Practice (Nursing) (MSc) – for adult, child and mental health nurses	FT PT			70
	Advanced Leadership for Professional Practice (Social Work) (MSc)	FT PT			70
	Specialist Practice (Cancer) (MSc)	FT PT			70
	Advanced Clinical Practice (Paediatrics) (MSc)	PT			70
	Advanced Practice Interventions in Mental Health (APIMH) (MSc)	PT			70
	• Primary Mental Health Care pathway (MSc/PGDip/PGCert)				
	Clinical Research (MClin Res)		FT PT		70
	Health and Social Care (MRes HSC)		FT PT		70
	Independent Prescribing (Short Course) PG Credit	PT			70
	Social Work (MA)	FT			70
R	Midwifery (MPhil/PhD)	FT PT	FT PT	uom.link/pgp-nursing-research	70
	Midwifery (four-year programme) (PhD)	FT	FT		70
	Nursing (MPhil/PhD)	FT PT	FT PT		70
	Nursing (four-year programme) (PhD)	FT	FT		70
OCCUPATIONAL HYGIENE AND OCCUPATIONAL MEDICINE					
T	Occupational Hygiene (MSc/PGDip/PGCert)	PT		uom.link/pgp-occupational-hygiene-masters	71
	Occupational Medicine (MSc/PGDip/PGCert)	FT PT			71
R	Occupational and Environmental Health (MPhil/PhD)	FT PT	FT PT	uom.link/pgp-occupational-hygiene-research	71
OPTOMETRY					
T	Investigative Ophthalmology and Vision Science (MSc/MRes)	FT PT		uom.link/pgp-optometry-masters	71
R	Ophthalmology (MPhil/PhD)	FT PT		uom.link/pgp-optometry-research	71
	Optometry (MPhil/PhD)	FT PT			71
PHARMACY					
T	Advanced Clinical Skills (Short Course)	PT		uom.link/pgp-pharmacy-masters	72
	Advanced Community Pharmacy Practice (MSc/PGDip/PGCert)		PT		72
	Advanced Specialist Training in Emergency Medicine (PGCert)	PT			72
	Clinical Pharmacy (MSc/PGDip)		PT		72
	Independent Prescribing (Short Course)	PT			72
	Model-Based Drug Development (MSc)	FT	PT		72
	Pharmaceutical Industry Advanced Training (PIAT) (MSc/PGDip/PGCert):		PT		72
	• Industry Pharmacy pathway				
	• Pharmaceutical Business Development and Licensing pathway				
	• Pharmaceutical Microbiology pathway				
	Pharmaceutical Technology and Quality Assurance (MSc/PGDip/PGCert)	PT			72
R	Drug Design, Development and Delivery (MPhil/PhD)	FT PT		uom.link/pgp-pharmacy-research	72
	Pharmacy and Pharmaceutical Sciences (MPhil/PhD)	FT PT			72
	Pharmacy Practice (MPhil/PhD)	FT PT	FT PT		72
	Pharmacology (MPhil/PhD)	FT PT			72

TAUGHT/ RESEARCH COURSE		CAMPUS	ONLINE/ BLENDED	DISCOVER MORE	PAGE
PHILOSOPHY					
T	Philosophy (MA)	FT PT		uom.link/pgp-philosophy-masters	72
	Political Science – Philosophy and Political Theory (MA)	FT PT			72
R	Philosophy (PhD)	FT PT		uom.link/pgp-philosophy-research	72
PHYSICS AND ASTRONOMY					
T	Nuclear Science and Technology (MSc/PGDip/PGCert)	FT PT		uom.link/pgp-physics-masters	73
R	Astronomy and Astrophysics (MSc by Research/PhD)	FT PT		uom.link/pgp-physics-research	73
	Biological Physics (MSc by Research/PhD)	FT PT			73
	Condensed Matter Physics (MSc by Research/PhD)	FT PT			73
	Graphene NOWNANO CDT (PhD)	FT			73
	Fluids and Soft Matter Physics (MSc by Research/PhD)	FT			73
	Nuclear Physics (MSc by Research/PhD)	FT PT			73
	Particle Accelerator Physics (MSc by Research/PhD)	FT PT			73
	Particle Physics (MSc by Research/PhD)	FT PT			73
	Photon Physics (MSc by Research/PhD)	FT PT			73
	Physics (MSc by Research/PhD)	FT PT			73
	Soft Matter and Liquid Crystals Physics (MSc by Research/PhD)	FT PT			73
	Theoretical Physics (MSc by Research/PhD)	FT PT			73
PLANNING AND ENVIRONMENTAL MANAGEMENT					
T	Data Science: Applied Urban Analytics (MSc)	FT		uom.link/pgp-planning-masters	73
	Environmental Impact Assessment and Management (MSc)	FT PT			73
	Global Urban Development and Planning (MSc)	FT PT			73
	Planning (MSc)	FT PT			73
	Real Estate Asset Management (MSc)	FT PT			73
	Real Estate Development (MSc)	FT PT			73
	Research Methods with Planning and Environmental Management (MSc)	FT			73
	Urban Design and International Planning (MSc)	FT PT			73
	Urban Regeneration and Development (MSc)	FT PT			73
	Planning and Environmental Management (PhD)	FT PT		uom.link/pgp-planning-research	73
POLITICS					
T	Human Rights – Law / Political Science pathway (research route) (MA)	FT PT		uom.link/pgp-politics-masters	74
	Human Rights – Law / Political Science pathway (standard route) (MA)	FT PT			74
	Human Rights – Political Science (research route) (MA)	FT PT			74
	Human Rights – Political Science (standard route) (MA)	FT PT			74
	International Political Economy (research route) (MA)	FT PT			74
	International Political Economy (standard route) (MA)	FT PT			74
	International Relations (research route) (MA)	FT PT			74
	International Relations (standard route) (MA)	FT PT			74
	Peace and Conflict Studies (MA)	FT PT			74
	Political Economy (research route) (MA)	FT PT			74
	Political Economy (standard route) (MA)	FT PT			74
	Political Science – Democracy and Elections (research route) (MA)	FT PT			74

TAUGHT / RESEARCH COURSE		CAMPUS	ONLINE/ BLENDED	DISCOVER MORE	PAGE
POLITICS (CONTINUED)					
T	Political Science – Democracy and Elections (standard route) (MA)	FT PT		uom.link/pgp-politics-masters	74
	Political Science – European Politics and Policy pathway (research route) (MA)	FT PT			74
	Political Science – European Politics and Policy pathway (standard route) (MA)	FT PT			74
	Political Science – Governance and Public Policy pathway (research route) (MA)	FT PT			74
	Political Science – Governance and Public Policy pathway (standard route) (MA)	FT PT			74
	Political Science – Philosophy and Political Theory (MA)	FT PT			74
	Political Science – Political Theory pathway (research route) (MA)	FT PT			74
	Political Science – Political Theory pathway (standard route) (MA)	FT PT			74
	Politics (MA)	FT PT			74
R	Politics (PhD)	FT PT		uom.link/pgp-politics-research	74
MANAGEMENT OF PROJECTS					
T	Commercial Project Management (MSc)	FT		uom.link/pgp-management-of-projects-masters	74
	Construction Project Management (MSc)	FT			74
	Engineering Project Management (MSc)	FT			74
	Management of Projects (MSc)	FT			74
R	Management of Projects (MPhil/PhD)	FT PT		uom.link/pgp-management-of-projects-research	74
PSYCHOLOGY AND MENTAL HEALTH					
T	Approved Mental Health Professional Practice (AMHP training) (PGCert)	PT		uom.link/pgp-psychology-masters	75
	Clinical and Health Psychology (MSc)	FT PT			75
	Forensic Psychology and Mental Health (MSc)	FT PT			75
	Health Psychology (MSc)	FT PT			75
	Neuroimaging for Clinical and Cognitive Neuroscience (MSc)	FT			75
	Neuroscience (MSc)	FT			75
	Psychology (MRes)	FT			75
R	Clinical Psychology (MPhil/PhD)	FT PT		uom.link/pgp-psychology-research	75
	Cognitive Neuroscience (MPhil/PhD)	FT PT			75
	Doctorate in Clinical Psychology (ClinPsyD)	FT			75
	Doctorate in Forensic Psychology (DForenPsy)	FT			75
	Experimental Psychology (MPhil/PhD)	FT PT			75
	Health Psychology (MPhil/PhD)	FT PT			75
	Neuroscience (MPhil/PhD)	FT PT			75
	Psychology (MPhil/PhD)	FT PT			75
PUBLIC HEALTH AND PRIMARY CARE					
T	Dental Public Health (MDPH/MRes/PGDip/PGCert)		FT PT	uom.link/pgp-public-health-masters	75
	Evidence-Based Healthcare (MSc)		FT PT		75
	Primary Care (distance-learning) (MRes)		FT PT		75

TAUGHT / RESEARCH COURSE		CAMPUS	ONLINE/ BLENDED	DISCOVER MORE	PAGE
PUBLIC HEALTH AND PRIMARY CARE (CONTINUED)					
T	Public Health (distance-learning) (MPH/MRes/PGDip/PGCert) • Public Health pathway • Global Health pathway • Implementation Science pathway • Environment and Public Health pathway • Occupational Health pathway • Communicable Disease Prevention and Control pathway • Dental Public Health pathway • Evidence-Based Healthcare pathway • Health Sciences pathway		FT PT	uom.link/pgp-public-health-masters	75
	Personal Professional Development (Public Health and Primary Care) (PG Credit)		PT		75
R	Health Economics (MPhil/PhD)	FT PT		uom.link/pgp-public-health-research	75
	Health Informatics (MPhil/PhD)	FT PT			75
	Health Psychology (MPhil/PhD)	FT PT			75
	Primary Care and Health Services Research (MPhil/PhD)	FT PT			75
	Occupational and Environmental Health (MPhil/PhD)	FT PT	FT PT		75
	Public Health (MPhil/PhD)	FT PT			75
RELIGIONS AND THEOLOGY					
T	Religions and Theology (MA)	FT PT		uom.link/pgp-religion-masters	76
R	Religions and Theology (MPhil/PhD)	FT PT		uom.link/pgp-religion-research	76
SOCIAL ANTHROPOLOGY					
T	Anthropological Research (MA)	FT PT		uom.link/pgp-social-anthropology-masters	76
	Social Anthropology (MA/PGDip)	FT PT			76
	Visual Anthropology (MA)	FT			76
R	Social Anthropology (PhD)	FT PT		uom.link/pgp-social-anthropology-research	76
	Social Anthropology with Visual Media (PhD)	FT PT			76
SOCIAL STATISTICS					
T	Social Research Methods and Statistics (MSc/PGDip)	FT PT		uom.link/pgp-social-statistics-masters	77
	Data Science (MSc)	FT			77
R	Social Statistics (PhD)	FT PT		uom.link/pgp-social-statistics-research	77
SOCIAL WORK					
T	Social Work (MA)	FT		uom.link/pgp-social-work-masters	77
R	Social Work (MPhil/PhD)	FT PT	FT PT	uom.link/pgp-social-work-research	77
	Social Work (four-year programme) (PhD)	FT	FT		77
SOCIOLOGY					
T	Sociological Research (MSc/PGDip)	FT PT		uom.link/pgp-sociology-masters	78
	Sociology (MA/PGDip)	FT PT			78
R	Sociology (PhD)	PT		uom.link/pgp-sociology-research	78
TRANSLATING, INTERPRETING AND INTERCULTURAL STUDIES					
T	Intercultural Communication (MA)	FT PT		uom.link/pgp-tis-masters	78
	Translation and Interpreting Studies (MA/PGDip)	FT PT			78
R	Interpreting Studies (PhD)	FT		uom.link/pgp-tis-research	78
	Translation and Intercultural Studies (PhD)	FT			78

Entry requirements

Here at Manchester we welcome talented students from all backgrounds who have achieved excellence in a wide range of UK and international qualifications.

For details on the exact qualifications, skills and qualities you need to embark on your desired postgraduate programme at Manchester – including English language requirements – visit the programme or course profile on our website.

uom.link/pgp-study

UK qualifications

For entry to most master's courses, you'll need an undergraduate degree of 2:1 or above. For entry to a doctoral programme, you may also need a master's degree at merit or above. However, these are only guidelines; each course has its own entry requirements.

International qualifications

If you have qualifications from outside the UK and want to know whether we accept them for entry into Manchester, please visit our website or email us.

uom.link/pgp-study-international

✉ international@manchester.ac.uk

UK Visas and Immigration

If you need a Tier 4 visa to study with us, you must also satisfy UK Visas and Immigration's English language requirements.

www.gov.uk/tier-4-general-visa

English language requirements

A high standard of English is a valuable long-term skill that will enhance your job prospects. You must be able to demonstrate that you are proficient in written and spoken English to the general standard that we require and to the specific entry requirements of the programme you are applying for.

Approved English language tests

Most international students will need to demonstrate English language proficiency through an approved test. These internationally recognised assessments of English are usually designed to determine the ability of non-native speakers who intend to study or train in English.

For example: IELTS Academic is accepted by most British, Australian, Canadian and New Zealand academic institutions.

www.ielts.org

In general, we require an overall score of 6.5-7.5 in IELTS, depending on the programme. Many programmes also specify a minimum score in some test sub-scores (eg 6.5 in writing or reading).

Other acceptable qualifications

We do accept some other English language tests for the purpose of admission. Visit our website to find out more.

uom.link/pgp-language-requirements

Keep your qualification up to date

Some test scores, such as IELTS, are only valid for two years after the test date. Your English language test must be valid on the date you start your academic programme, otherwise you'll need to retake it.

Support with your application

Applicants with additional support needs

We welcome applications from anyone who has additional support needs arising from a long-term medical condition, disability, mental health difficulty, or specific learning difficulty such as dyslexia or dyspraxia. We'll consider your application on exactly the same academic grounds as other applications.

Please get in touch with our Disability Advisory and Support Service as early as possible once you have applied. This will help us to get all the support you need in place before you start.

uom.link/pgp-dass

International students

We have educational consultants in many overseas locations who can assist you with preparing and submitting your application. Visit our website to find out if we have representatives in your country.

uom.link/pgp-countries

Manchester connected

Manchester is the UK's best city to live in* and one of the world's best cities for international students.**

* Global Liveability Survey 2019 – Economist Intelligence Unit

** QS Best Student Cities 2019

Peak District
Lake District



1 hour
1 hour 30 mins



Liverpool 55 minutes
Leeds 1 hour 15 mins
York 1 hour 30 mins
Birmingham 1 hour 30 mins
London 2 hours
Edinburgh 3 hour 15 mins



A city at the heart of the UK,
connected to the rest of the world



Paris 1 hour 30 mins
New York 7 hours 30 mins
Dubai 8 hours
Lagos 9 hours 30 mins
Beijing 10 hours 30 mins
Toronto 11 hours
Lahore 12 hours
Mumbai 12 hours
São Paulo 12 hours 30 mins
Singapore 13 hours 30 mins
Vancouver 16 hours
Hong Kong 17 hours
Sydney 23 hours

The University of Manchester
Oxford Road
Manchester
M13 9PL

www.manchester.ac.uk

Royal Charter Number RC000797

3335.07.20

