

MSA // BA1



WELCOME

Welcome to Manchester.

Architecture is a discipline that is extensive, challenging, intriguing, exciting, and deeply rewarding.

Our School aims to enable you to become the Architect you want to be. Take risks, ask questions and immerse yourself in the discipline to build knowledge and ability. Read as much as you can, talk to peers and colleagues, visit buildings and places that interest you. Be prepared to ask fundamental questions about how we define and build the space that makes our cities and landscapes.

Remember that knowledge and understanding take time, and importantly that Architecture is serious fun.

We look forward to working with you.

Prof. Stefan White & Prof. Ola Uduku // Heads of School

This is the most exciting time in a generation to study architecture and Manchester is about the most interesting place you could be - in the thick of it. The teachers you will work with are engaged in live projects and investigating new and alternative futures through their research. We teach architecture in a way that puts you at the centre of your education. Through interconnected Studio, Humanities and Technology teaching we ask you to discover what kind of creative Architect you want to be, to investigate the matters that you are concerned with and develop your expertise. We are looking forward to seeing what you do and become.

Dan Dubowitz // Programme Leader BA [Hons]



WELCOME

First year at Manchester School of Architecture is focussed on understanding and developing your character, skill, aptitude and passion as an individual, as part of a vibrant, diverse and inquisitive cohort. We ask you to bring your existing knowledge and be open to experimenting and doing activities to unlock a new understanding of architecture. Your time will be spent making, drawing, thinking and recording in a number of teaching sessions which will ask you to question the context of the space around you.

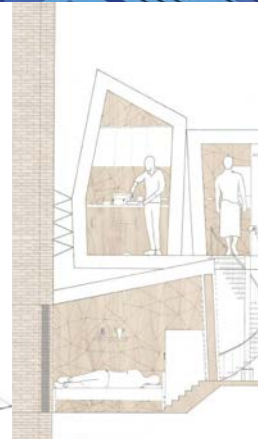
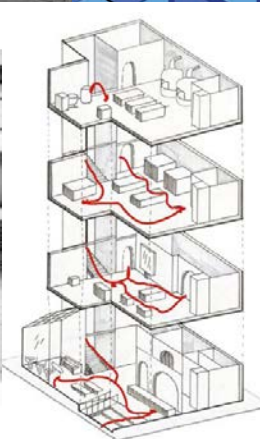
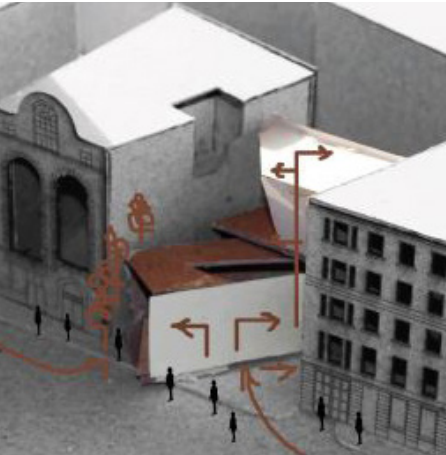
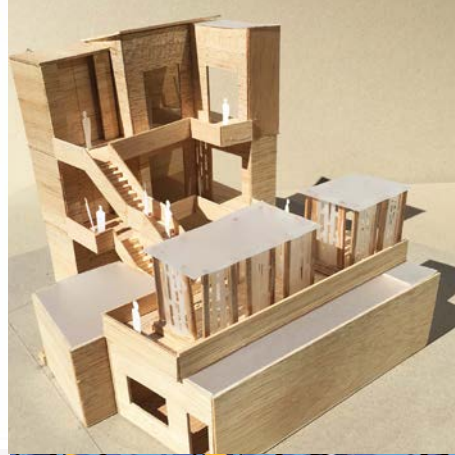
We understand that the experience of going to university will look very different from the one before the pandemic began. Rest assured that we are dedicated to ensuring you receive the best tuition whether you are located in Manchester or elsewhere. First year in Architecture provides a range of different learning experiences and we plan the timetable carefully to ensure you can manage the work and your time effectively. Each week has the same structure, if you in Manchester on campus, or at home.

We recommend that you carry a small sketchbook with you at all times to sketch and diagram as you begin to notice the details, the artefacts and the inhabitants of our cities. It is important to understand that you already have a vast resource of skills and understanding within yourselves and that you understand that the environment of the studio should be seen as one in which individual investigations and debate are as important as 'being taught'. You will learn to use a variety of creative techniques over the year and to push the boundary of what you think constitutes architectural knowledge.

Most importantly, you should never be afraid to take risks and to go beyond what you think is 'required'. Be prepared to work hard and to be challenged on your designs in studio sessions by working in ways which you might not understand at first. Do not be scared to think differently and to make a few mistakes along the way.

Everyone remembers their first year at Architecture School, and this is going to be one to remember! It is the most exciting, most free and most creative educational space our discipline has, and I am sure that your cohort will take this opportunity with more confidence and enthusiasm than any cohort before you!

Here are some examples of work from last year to help inspire you...



STUDIO

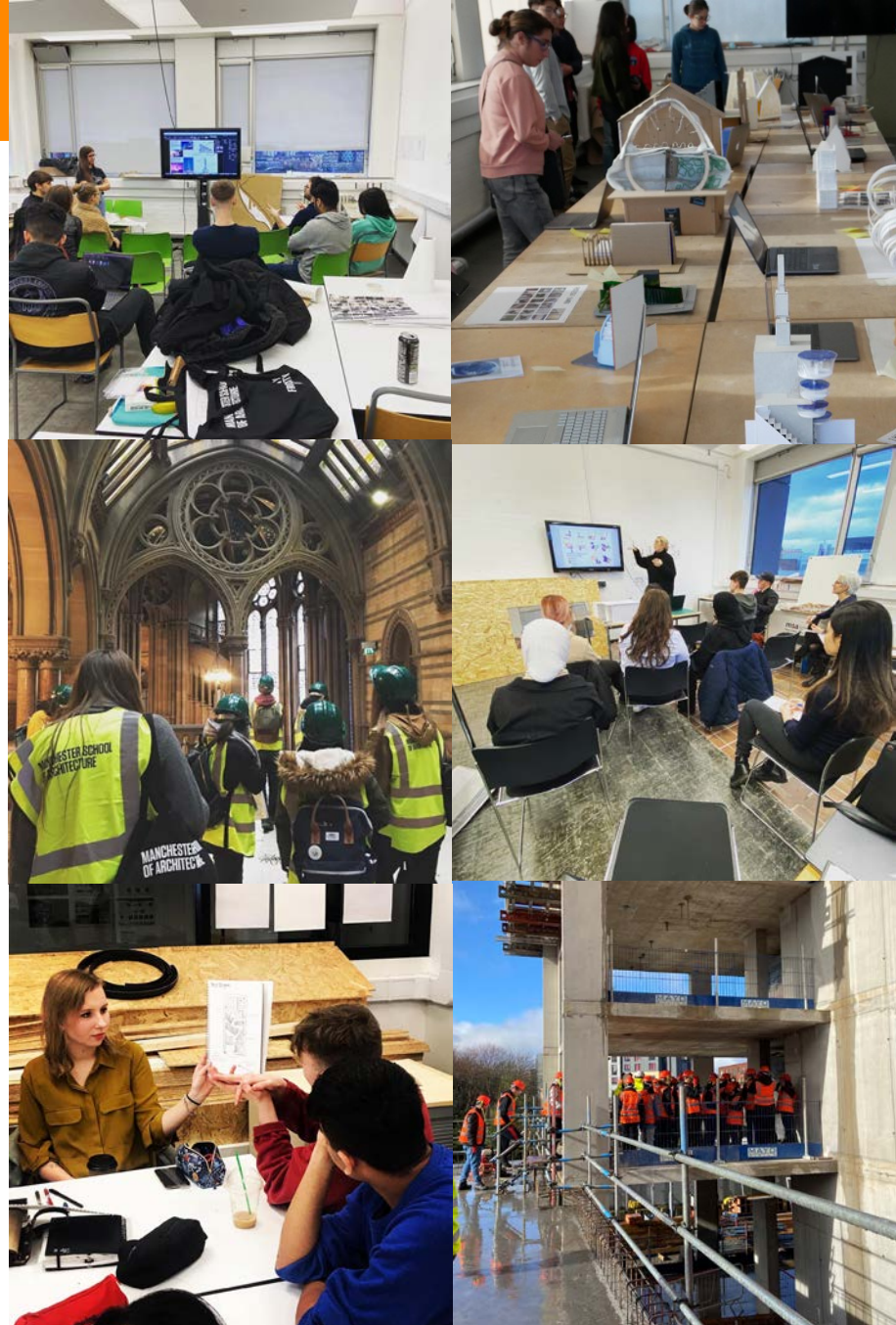


Emily Crompton // Year Leader
e.crompton@mmu.ac.uk

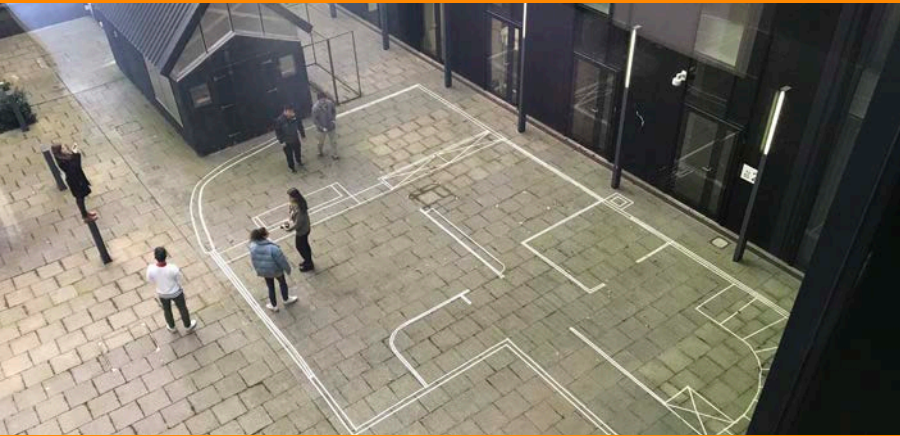
Studio is where you will learn how to test and experiment with form, debate ideas and present your own unique proposals. We will challenge your existing knowledge of space and how space is created. Projects begin from a variety of starting points and increase in scale over the year. Through this unit you will become independent designers capable of developing complex briefs and beautiful ideas.

The starting point for your first studio project will require you to consider how movement might be visualised and manifest spatially. Through the design of a space for dance, the idea of considering the specific qualities of a space will be introduced, so you might want to start thinking about how you could best represent your ideas visually. The next project considers a compact home and the final one considers manufacturing space.

Over the summer think about your own home, and how you live, think about the activities and how much (or how little) space they require. Start by measuring yourself, and try to draw people doing different daily activities. We have provided some links to some free books on the reading page of this booklet to help get you inspired, so have a look at those!



HUMANITIES



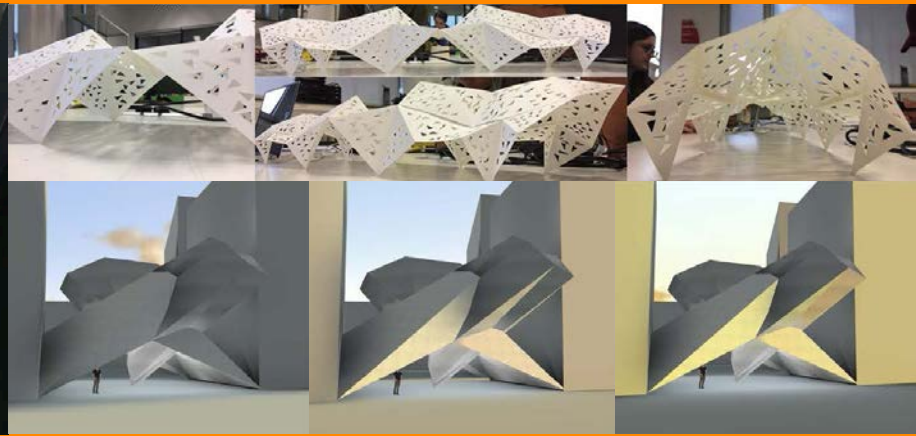
The Humanities unit introduces you to the historical, cultural and theoretical contexts of architecture. Lectures will act as surveys on different areas of Architectural History all taken from a range of themes such as Health, Trade, Class and Power amongst many more. You will discuss key ideas and thoughts from antiquity to contemporary through the examination of history and evolution of concepts, ideas, cities, and building types, to understand, how these have shaped our contemporary thinking. The course will be delivered through a lecture series, however coursework elements are designed to be a mixture of both academic writing and creative outputs such as drawing, which develops skills in research, analysis and visual representation.

Over the summer, get inspired by finding out more about your own city's history and key buildings. Start sketching interesting historical features on buildings you know, and copy other ones from pictures of famous examples from various periods of architectural history, such as Antique Capitals and Orders, Gothic Vaults, Renaissance Domes, Baroque Facades or the arrangement of Modernist Spaces.

Dr Ray Lucas
Humanities Leader



TECHNOLOGIES



"You can't better the world by simply talking to it. Philosophy, to be effective, must be mechanically applied." Buckminster Fuller.

"Technology is the answer; but what was the question?" Cedric Price.

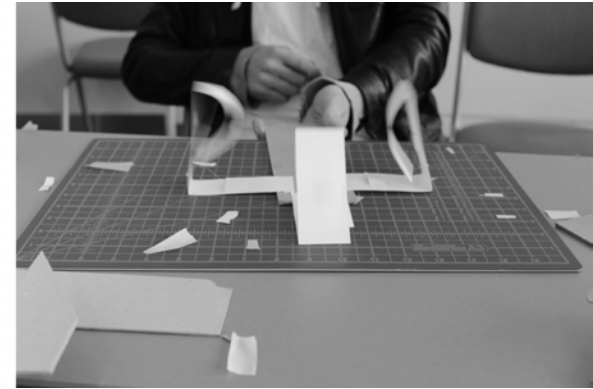
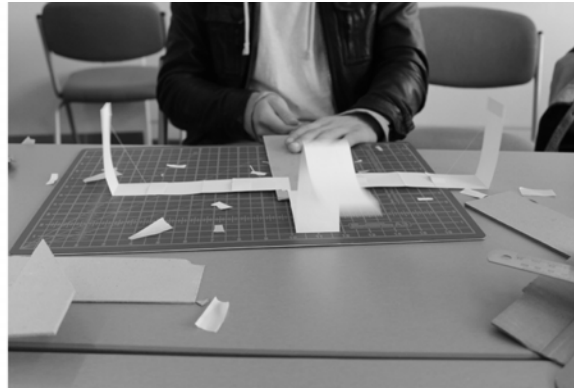
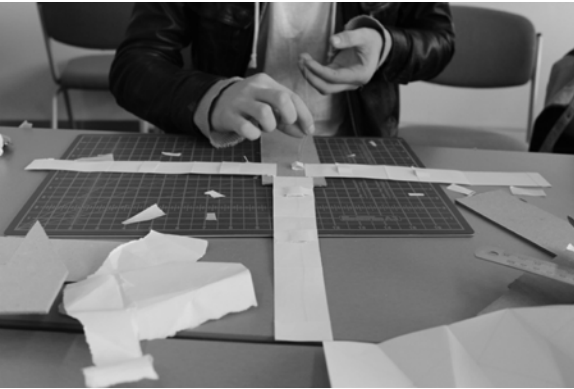
The Technologies unit asks you to question the experiential and instrumental performance of a building by examining materiality, buildability, technology, sustainability and detail. Through a series of lectures and case studies the course allows you to analyse architecture starting with the following time honoured criteria set by Vitruvius of 'Fermitas, Utilitas, Venustas' [Firmness, Commodity and Delight] :
Firmness // Is the building safe, stable and durable?
Commodity // Does it accommodate its programme comfortably?
Delight // Is the experience of the building delightful?

Get inspired over the summer by drawing a portal frame, finding out the compressive strength of a standard brick, making a simple model of a frame, designing a tall tower to support a tennis ball with one sheet of paper, finding three types of bridge, drawing a staircase in section and finding a structural fault in a building.

Matt Ault
Technologies Leader



SKILLS

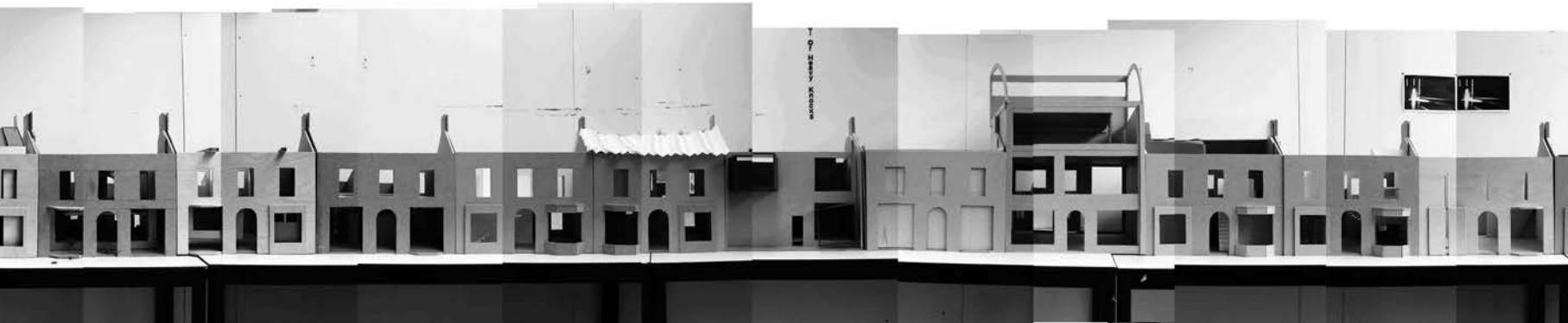


Each week is supplemented by a SKILLS workshop session. These sessions are designed to allow you to progress the many skills required to meet the course deadlines and align with Studio, Humanities and Technologies outputs which require rudimentary knowledge and skills that underpin the discipline.

Get inspired over the summer by simply looking at drawings that inspire you and working out how you think they were drawn by experimenting with techniques and recording them in an experimental sketchbook. Some of our favourites can be found at <http://drawingarchitecture.tumblr.com>.

After Easter each year students work with key collaborators in the city in an intensive EVENTS programme which tackle live agendas through exhibitions, installations, built projects, workshops, charrettes, processions and protests. Over the years this programme has seen students working with real clients doing anything from bricklaying to creating digital environments.

Get inspired over the summer by reading through the blog of Events 2019 which can be found at [<http://events.msa.ac.uk/2019/>]. You can also get involved in architectural events where you live from exhibitions to volunteering for community building projects.



TYPICAL WEEK

We understand that coming to university this year will feel very different than it did before the pandemic.

The structure of the course will be the same, whether you are able to join us on campus or are learning remotely. We will make every effort to integrate year 1 students at the Manchester School of Architecture as one cohort. This is a typical weekly structure:

Monday is dedicated to STUDIO Teaching. You will speak with your tutor and studio group. On Tuesdays there is an optional drop-in with year leaders for extra support or pastoral issues.

Wednesday mornings, is dedicated to SKILLS delivery, which will usually be a lecture followed by a workshop activity. **Wednesday afternoons** has no formal teaching or delivery as we want to encourage you, whether in Manchester or elsewhere, to attend extra-curricular activity such as a sports. **Thursday** is dedicated to Humanities and Technologies lectures / learning activities.

Tuesday and **Friday** are self-directed days (there is no dedicated delivery). On the timetable here, we suggest that you dedicate one to Humanities production - for example reading, finding references, carrying out an English writing course etc. And the other becomes dedicated to Technologies production - including weekly tasks with an informal submission via upload that day.

You will be provided with much more detail about delivery during induction week and via Moodle (our online intranet where all course material is stored - you will get access once you register).

	STUDIO	HUMS	TECH
MONDAY	STUDIO DELIVERY + PRODUCTION: ACTIVITY / TUTORIAL/ GROUP WORK		
TUESDAY		SUGGESTED HUMS PRODUCTION DAY	
WEDNESDAY	SKILLS DELIVERY + PRODUCTION: STUDIO LECTURE/ WORKSHOP/ STUDY SKILLS / FORUMS		
	SPORTS / EXTRA CURRICULAR / MSSA ACTIVITIES		
THURSDAY		HUMS DELIVERY: LECTURE/ SEMINAR / VISIT/ DRAWING GROUP	TECH DELIVERY: LECTURE FORUM/ SEMINAR/ CASE STUDY GROUP
FRIDAY			SUGGESTED TECH PRODUCTION DAY (+upload)

SUMMER INSPO

We will provide specific reading lists for each Studio, Humanities and Technologies brief, in the main and wherever possible we will endeavor to ensure all books can be accessed online, through MMU or UoM Library. Reading in Architecture doesn't have to mean reading a book cover to cover. Sometimes it can be reading to find a specific reference, or looking at a particular chapter or precedent.

However there are four key texts which will serve as essential reading for Year 1, and will prove useful throughout your architectural education:

Delany, M. & Gorman, A. Studio Craft & Technique for Architects.
Dunn, N. Architectural Modelmaking.
Hunt, T. Tony Hunt's Structures Notebook.
Hartwell, C. Pevsner Architectural Guide: Manchester

These can be bought as a bundle exclusively from BLACKWELLS in Manchester for a **discounted price**. They also offer FREE delivery, or you can collect when you arrive!
Blackwell's University Bookshop, University Green 146 Oxford Road M13 9PG. Tel 0161 2743331 // email - manchester@blackwell.co.uk

SALE
Blackwells offer a great discount on this bundle of books, and they deliver WORLDWIDE!

READING

Here are some online resources for you to browse as you prepare yourself for Architecture School in September:

Get thinking about STUDIO:

ONLINE BOOK: Understanding Architecture Through Drawing. Brian Edwards:
https://issuu.com/education.egovn/docs/understanding_architecture_through

Take a look at the Manchester School of Architecture's Degree Show:
<https://www.msa.ac.uk/2020/>

ONLINE BOOK: Architecture of Diagrams. Andrew Chaplin:
https://issuu.com/andrew-chaplin/docs/architecture_of_diagrams

You can take a look at other Architecture School's work via Dezeen's Virtual Design Festival's spotlight on design schools:
<https://www.dezeen.com/vdf/schools/>

Get thinking about HUMANITIES:

ONLINE BOOK: Introducing Architectural Theory: Debating A Discipline. Edited by Korydon Smith: https://issuu.com/thanhcn/docs/introducing_architectural_theory

Listen to short interviews with current leading architects on this podcast:
<https://architecturemasters.org/>

Take a virtual tour around buildings all over the world:
<https://www.archdaily.com/tag/virtual-tour>

Get thinking about TECHNOLOGIES:

ONLINE BOOK: Materials for Architects and Builders. Arthur Lyons:
https://issuu.com/raneemqubatruss/docs/arthur_lyons_materials_for_architects_and_uilder

EQUIPMENT

ARCHITECTURE IS A DOING WORD!

Architectural education combines drawing, model making, test modelling, photography, film making, sketching, experimentation, computer presentations, analysis and written work which all requires a lot of equipment. Although we do not suggest you buy overly expensive materials and experiment with found objects and recycled basics, there are some things which are worth investing in as you start your course.

We understand that some of you may be away from Manchester when the course starts. We are working hard with partners to ensure you have access to all the equipment and resources you'll need and more details will be made available at the start of term.

What type of laptop do I need?

The laptop will need to have a good graphics card and plenty of memory. You can use Windows or Mac. We would typically recommend an Intel Core i7 processor (or equivalent,) 16GB of RAM, 500GB or more of memory with a good graphics card. This is only a suggestion, check the requirements of the software listed below for more specific needs.

What software will I need to use?

Typical software includes the Adobe Suite (Photoshop, Illustrator and InDesign), AutoCAD and Revit as well as 3D modelling software Sketchup. The Microsoft office suite (or equivalent) is also required.

ESSENTIAL EQUIPMENT NEEDED FROM DAY 1:

Sketchbook
Mechanical Pencil
Pencil Leads
3 x Drawing Pens // e.g. 0.25mm/ 0.35mm/ 0.7mm
Tape Measure
Masking Tape
Metric Scale Rule // 30cm (scales: 1:1/ 1:5/ 1:20/ 1:50/ 1:100/ 1:200)
A1, A2 and A3 Paper
Tracing Paper (a roll of tracing paper can be a great idea)
Laptop (should have a graphics card/ good for image processing)

GOOD TO HAVE / FUTURE PURCHASES:

Portable Drawing Board (A2/ A3)
Adjustable Set Square // 300mm
Sketching Pencils
Notebook // Files
Cartridge Paper
Drawing Tube // A1
Model Making Grey Card
Scrap Card
Balsa Wood
Model Making Glue
Cutting Mat // A2
Steel Rule // 1000mm // 300mm
Scalpel // Blades
Suitable Waterproof Clothing
Calculator
External Harddrive // Backup
Digital Camera // Camera Phone

SALE
Student discounts
will be available at
many shops once
you enrol at both
universities and
get your student
cards!!

**Fred Aldous 20%
Discount Code:
MSA2021 &
4D Model Making
Shop Discount**

MCR MAP

For those students who are joining us in Manchester, here are some important locations:

1 : MMU LIBRARY

Library // Books // Journals
Magazines // Maps // Special Collections
Computers // Archives

2 : MMU UNION

Student Union Advice Centre
Union Shop // Art Supplies // Paper
Pens // Paints // Modelmaking Card

3 : BENZIE + CHATHAM BUILDING

Studio // Workshops // A4 + More Shop
Computes // AV Store // Digital Lab
Printers // Scanners
Art Cafe // Roof Terrace

4 : HUMANITIES BRIDGFORD STREET

Lectures // Humanities // Technologies
Dissertation Library // B.15 Workshop

5 : UOM LIBRARY

Books // Journals // Research
Maps // Archives // Periodicals

6 : UOM UNION

Student Committee // Freshers Fair
Debate // Support // Community

We recommend you join the MSA Freshers 2020 facebook group to meet other students who are joining the school of architecture this year, there are some 3rd years in the group who will be able to answer more questions about student life.

Join here:

[MSA Freshers 2020 Facebook Group](#)

Coming to Architecture School can be a daunting prospect, but you will automatically be part of the largest student society in the country and we are here to support you throughout your time at the MSA. The committee of the Manchester Student Society of Architecture [MSSA]. We organise a series of events and activities, including the informal Before You're 30 [BY30] lectures, the MSA Debating Union, the MSSA Zine, WOAH

(without a home), SOS (Sketch on Site), MSA&U (wellbeing) the MSA Ball, socials, and networking opportunities. You can become as active and involved a member as you like. Join the committee or the BY30 team or set up something new, like a sports team, an event, or another student led initiative. Just come along to one of our weekly meetings and we will help you to get started.

We look forward to meeting you in September, in the meantime check our website, like us on Facebook and follow us on Twitter! And make sure you join the Official MSA Year 1 Facebook Group, some of our members will be there to help orientate you!

The MSSA

Find out more at:

[facebook: MSA FRESHERS 2020](#)

mssa.msa.ac.uk

facebook.com/themssa

twitter.com/themssa

facebook.com/beforeyourethirty

twitter.com/beforeyoure30

facebook.com/MSADebate

Looking after your wellbeing is important all year round. There are lots of wellbeing and mental health support services across both MMU and University of Manchester. Remember it is important to take breaks from studying, eating and drinking well and getting a good night's sleep will all help keep you healthy.

At MMU Wellbeing Advisers can help you if you are feeling anxious, worried, lonely or under pressure. They are in Student Hubs if you feel you need somebody to talk to someone in confidence and can also give advice on improving your wellbeing. There is also a dedicated team of counsellors. Counselling is a type of talking therapy that allows you to talk about your problems in a non-judgemental environment. Counsellors are trained to work with you on personal and emotional issues.

Within the School of Architecture there is a student-led wellbeing group called MSA&U. They installed kettles around studio to encourage breaks, and have run yoga and meditation sessions. You can check out their activities via Instagram: [@msaandu](https://www.instagram.com/msaandu), or get in touch with them by email:

msawellbeing@gmail.com

Manchester Metropolitan University [Counselling & Mental Health Website](#)

MMU Well-being Advisors:
wellbeing@mmu.ac.uk

MMU Counselling Service:
counselling@mmu.ac.uk
Tel: 0161 247 3493

University of Manchester [Counselling Service Website](#)

UoM Counselling Service:
counselling.service@manchester.ac.uk
Tel: 0161 275 2864

To help support your studies MMU's Academic Study Skills Tutors are there to help. Staff can advise students on a range of issues relating to university life including: managing your time, presentation skills, reflective journals, research, exam tips, essay writing, dealing with stress and getting the best from your course.

If you are disabled or have a Specific Learning Difficulty, such as dyslexia, or health condition such as mental health difficulties you may find that you need some extra help when faced with the demands of Higher Education. Using medical evidence and an initial assessment, a Learning Support Adviser can help to identify your needs and suggest strategies, which will prove helpful. The adviser will produce a Personal Learning Plan [PLP] with you, which identifies to teaching staff your support needs and advises them of any reasonable adjustments they may need to make. The PLP is then sent to your department with your permission and any necessary adjustments will be incorporated into your sessions.

Please seek advice from the MMU Disability Support Service as soon as possible to arrange an initial confidential discussion with an adviser please contact the telephone number to arrange an appointment.

Manchester Metropolitan University

Student Hub, Geoffrey Manton
For general enquiries.
Tel: 0161 247 1000
Email: studenthub@mmu.ac.uk

MMU Study Skills Tutors
Tel: 0161 247 3330
studyskills@mmu.ac.uk

[MMU Writing Project](#)

For help with written English

MMU Disability Support Service
Tel: 0161 247 3491
disability.service@mmu.ac.uk

University of Manchester

Student Services, Burlington St
For general enquiries
Tel: 0161 275 5000
Email: ssc@manchester.ac.uk

UoM Study Skills Programme
[My Learning Essentials](#)

MANCHESTER SCHOOL OF ARCHITECTURE



Cover photo: Paul Grogan Photography