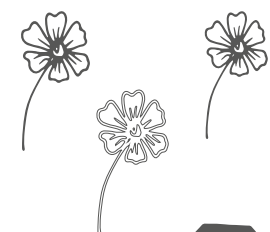
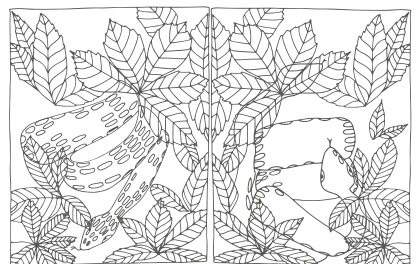


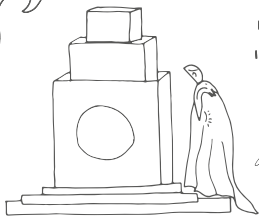
Denmark Road



Community Garden



Simon Periton The Outsider/The Insider, 2010

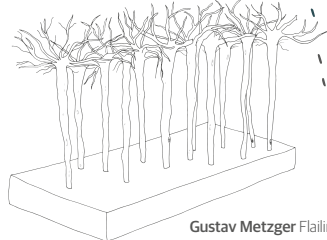


Raqs Media Collective Bending, 2017

Playground



Moss Lane East

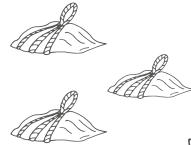


Gustav Metzger Flailing Trees, 2009

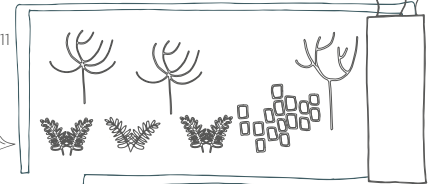
Print at home and colour, map of park and gardens



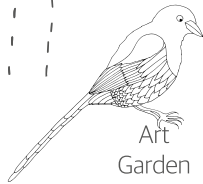
Nico Vascellari Bus de la Lum, 2011



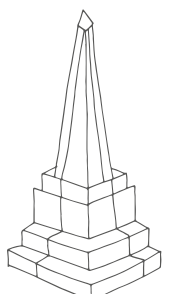
Alex Bernstein Garden



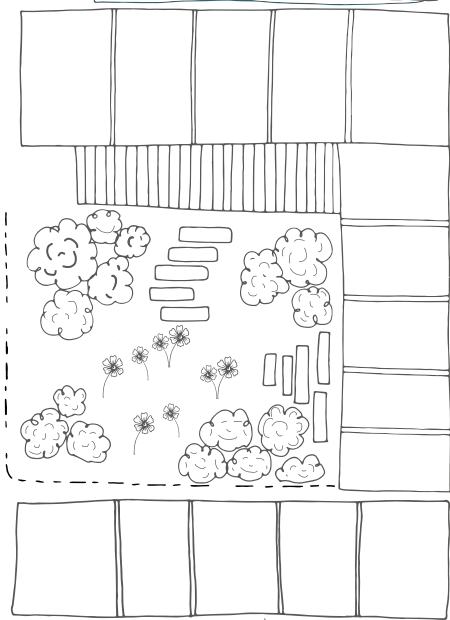
Emily Young Maerema Warrior Head V, 2011



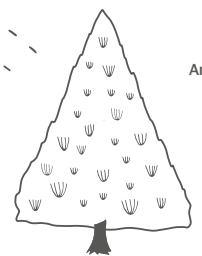
Art Garden



Cyprien Gaillard The Whitworth Park Obelisk, 2011

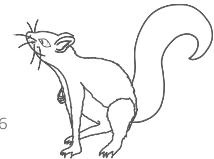
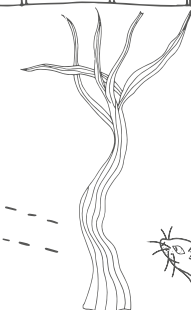


Nathan Coley Gathering of Strangers, 2007



Giant Sequoia

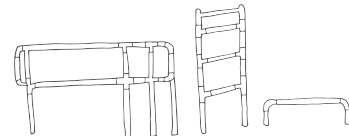
Anya Gallaccio Untitled, 2016



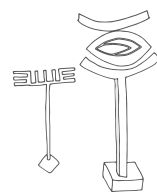
Nate Lowman Snowman, 2014



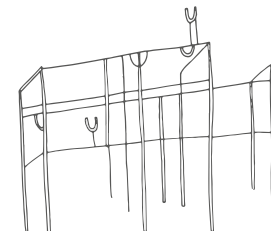
the Whitworth



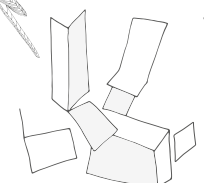
Jacqueline Donachie Crawford Heights, 2004



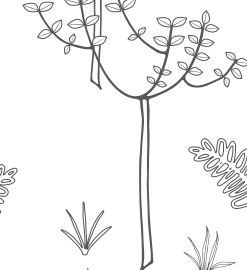
Bernard Schottlander Terminal & Untitled, 1964



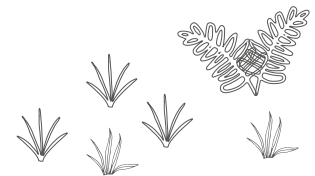
Christine Borland Support work (Hippocrates 1:085), 2015



Michael Lyons Phalanx, 1977

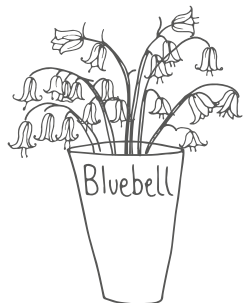


Oxford Road

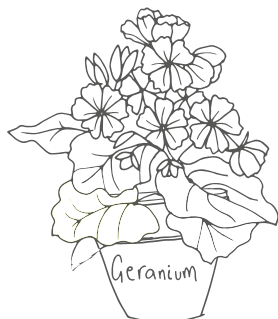
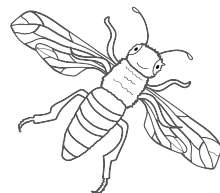


Our important plants

Can you find them in the Art Garden?



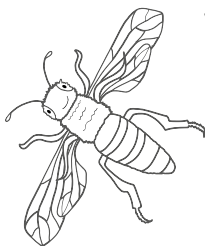
Bluebell sap is sticky and was used in medieval times to attach feathers to arrows. Bluebells can also be used in medicines, but you must not eat them!



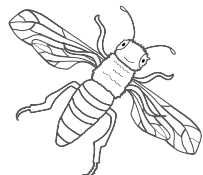
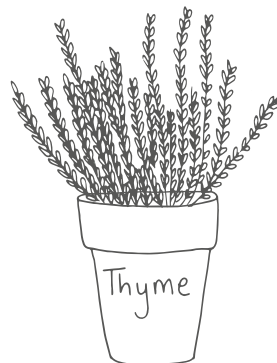
However, the leaves and petals of scented geraniums are edible. What do they **smell** like? Can you **touch** their leaves gently? What do they **feel** like?



Mint and thyme are both herbs. They can be used in cooking, medicine and are even used in perfumes.



Did you know that the Ancient Greeks believed that thyme was the source of courage? And the Ancient Egyptians used thyme when making mummies!

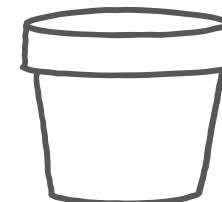
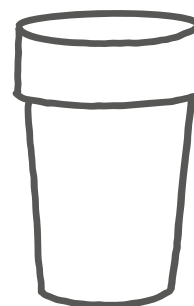


Your important plants

Which plants are your favourites?

Can you tell us why?

And can you draw them?



Follow us for more information

Facebook Facebook/thewhitworth
Instagram @whitworthart
Twitter @whitworthart
#WhitworthFamilies

Proud to be part of

MANCHESTER
1824

The University of Manchester
The Whitworth

The Whitworth
The University of Manchester
Oxford Road, Manchester M15 6ER
manchester.ac.uk/whitworth

Please recycle responsibly
Illustrations © Melanie Smith @smithandwonder.com