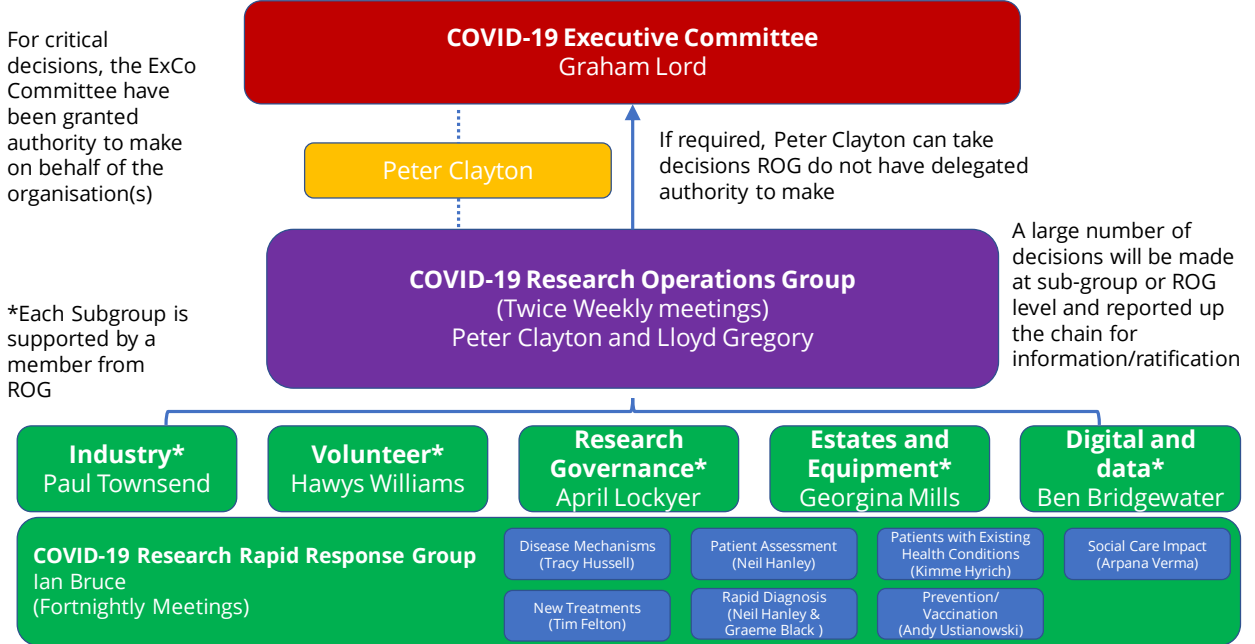
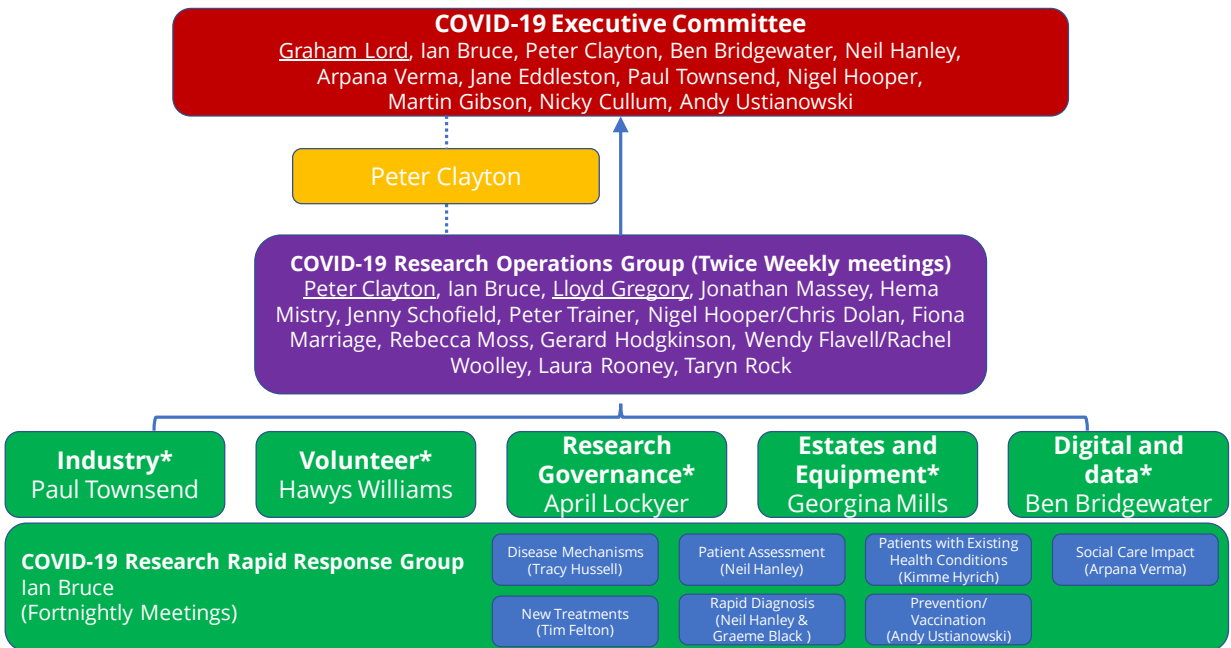


COVID-19 Research Rapid Response Decision Making Structure



Committee members

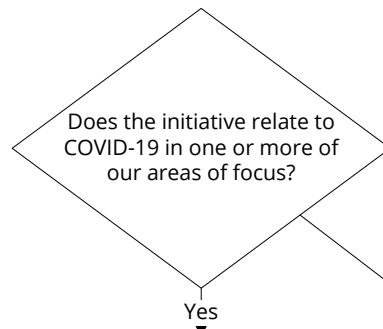


COVID-19 Research Rapid Response Decision Making Process

This is a **University-wide process**, endorsed by senior leadership and managed through the Faculty of Biology, Medicine and Health and Health Innovation Manchester.

It is designed to manage COVID-19 related requests from academics, the NHS, and industry to deploy services and research as effectively and efficiently as possible whilst ensuring safety and appropriate use of resource during a challenging time (i.e. reduced access to university buildings and facilities, home-working, compliance with government guidance around social distancing, etc.)

We appreciate this might not fit all scenarios - in these circumstances please contact covid19research@manchester.ac.uk for further advice



COVID-19 Research Priorities

- New treatments
- Disease mechanisms
- Patient assessment
- Social care impact
- Patients with existing health conditions
- Rapid diagnosis
- Prevention/vaccination
- Organisational development

www.manchester.ac.uk/coronavirus-response/

Gain senior management approval in your organisation (e.g. Head of School at UoM) and then send a completed Rapid Response pro-forma (<http://man.ac.uk/GXqam2>) to covid19research@manchester.ac.uk
The form captures key details required for the review process

