

Your visual guide to the Martin Harris Centre



A visual guide

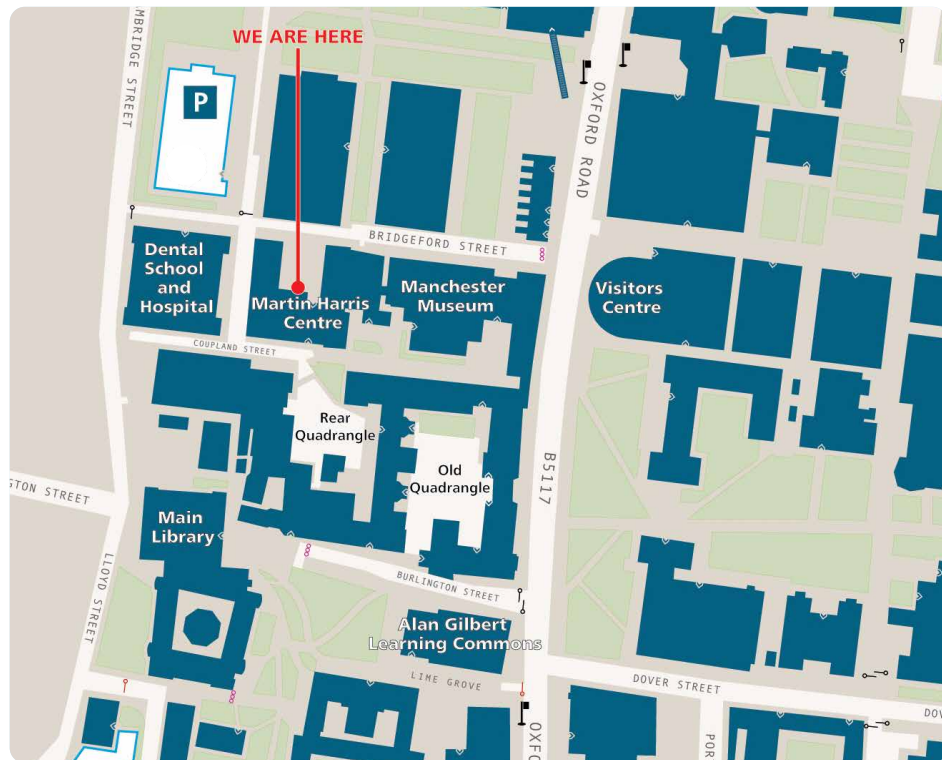
2024

Welcome to the Martin Harris Centre

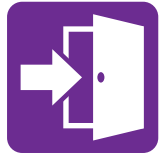


Where you can find us?

The Martin Harris Centre for Music and Drama is in The University of Manchester campus near Manchester city centre.



Arriving at the Martin Harris Centre

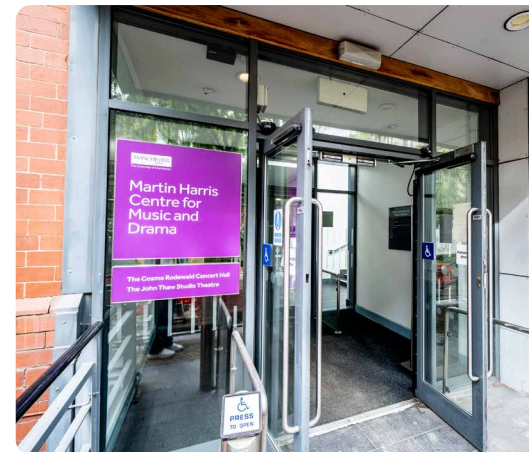


The Martin Harris Centre has two entrances.

Our Bridgeford Street entrance has some seating and plants outside it. This is an accessible entrance.



Our Coupland Street entrance is also accessible. This entrance is on the opposite side of the building to our Bridgeford Street one.



The foyer



When you come in to the Martin Harris Centre you will be in the foyer. It looks like this:

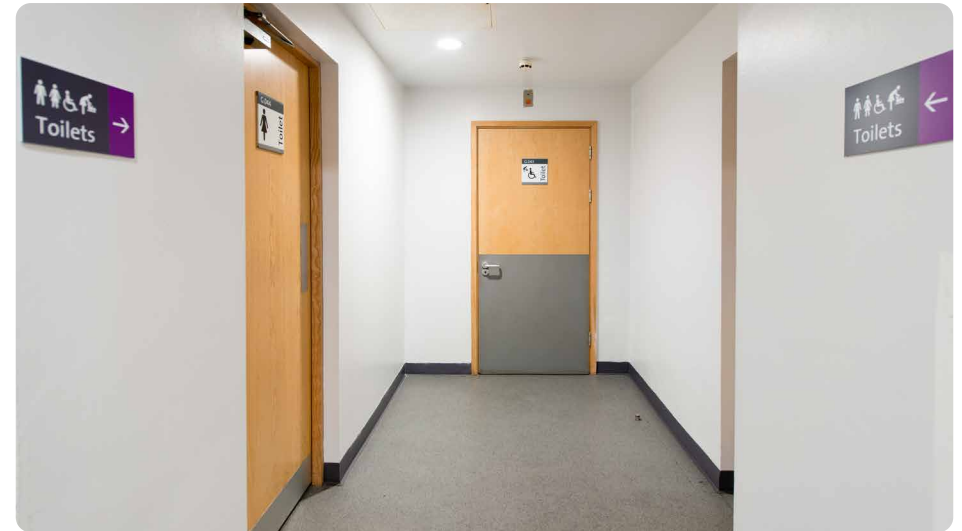


Sometimes our foyer can be very busy before a show. This is because people wait here to go into the concert hall or studio theatre.

Toilets



If you need them, there are toilets near the cafe. We have an accessible toilet with a baby changing table too. There are signs to show you where to go and toilet entrance looks like this.



Food and drink



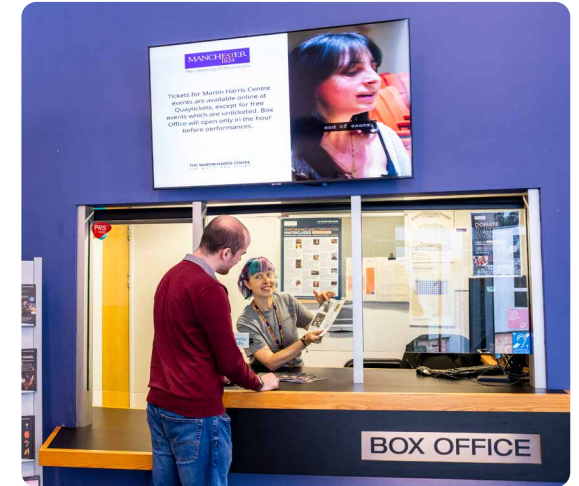
If you want to buy any hot drinks, cold drink or snacks you can do this at Cafe Arts. The cafe opens before our events and during the interval, if there is one.



Collecting tickets



If you are going to see a show you might need to buy or collect your ticket. To do this, go to the Box Office and a member of staff will help you. It will be open before the event.



Asking for help

If you need any help, you can ask a member of the Martin Harris Centre team. They will be wearing grey or black T-shirts with 'STAFF' written on the back. They are friendly and can help you if you have any questions.



Going into the theatre

There are two performance spaces in the Martin Harris Centre:

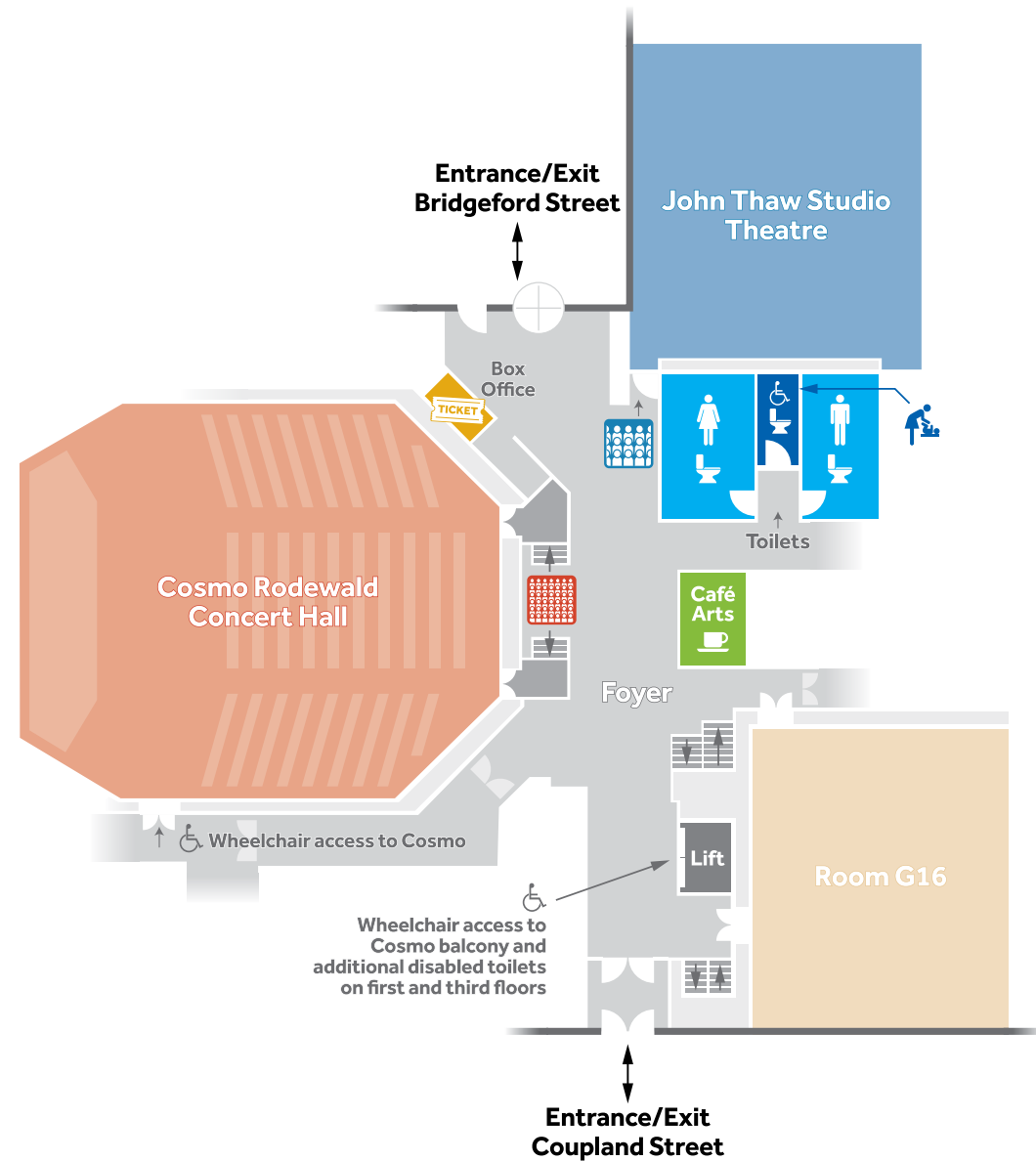
The Cosmo Rodewald Concert Hall



and the John Thaw Studio Theatre



Map of the Martin Harris Centre



Cosmo Rodewald Concert Hall



If you are going to see an event in the concert hall, you should go into it before the show starts.

If you are sitting downstairs, the doors are on the ground floor. The entrance doors are accessible by taking four steps up to the left or right. The middle door that is between the two sets of steps is a store cupboard. (see photo on Pg.8).



If you do not want to go up the steps, you can go into the concert hall through the side door. Ask our staff to show you where to go.



If the event is busy then you may be asked by a staff member to sit upstairs in the balcony. You can take the lift to the first floor.



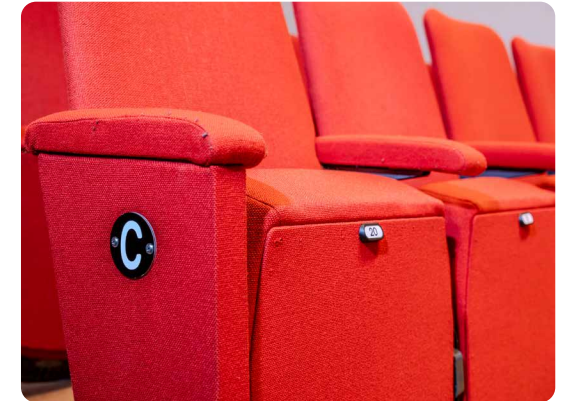
The door to the balcony looks like this. Staff will help you if you are not sure where to go.



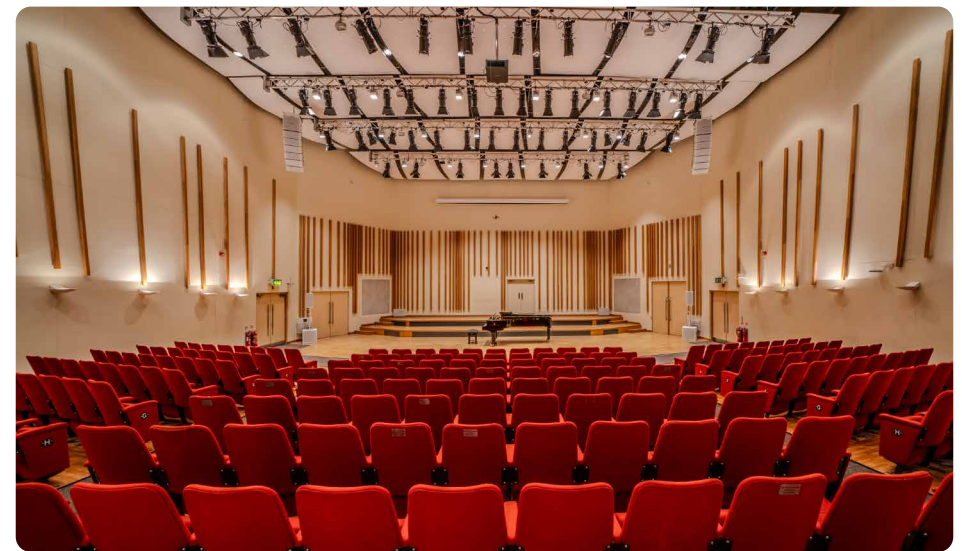
The Cosmo Rodewald Concert Hall has been fitted with an infra-red induction loop. You can ask our staff for a receiver or get one from Box Office. You can tell our Box Office staff about anything you need when you book, before you come or on the day.

A member of staff will help you find your seat. If your ticket has a seat number on it, there will be a seat with a matching number. Seat numbers look like this:

Some events are unreserved, which means you can sit anywhere you would like.



Inside the Concert Hall it looks like this:



John Thaw Studio Theatre



If you are going to an event in the John Thaw Studio Theatre, please enter the theatre before the show starts.

You will enter through the door that looks like this:



Staff will help you if you are not sure where to go.



The John Thaw Studio Theatre is fitted with induction loops. (Hearing aids should be switched to the 'T' position).

Seats in the Studio Theatre are unreserved. This means you can choose any seat. Our seats look like this:



Inside the Studio Theatre it looks like this:



The performance

Start of the performance

The start time for the performance will be written on your ticket.

You will know when the event is about to start because you will hear an announcements over the tannoy 5 minutes, 3 minutes and 1 minute before the show begins.



Middle of the performance

In the middle of the performance there may be an interval. This is so the performers and the audience can have a rest. At the start of the interval the lights will get brighter. The interval will last for about 20 minutes. You can find out if there is an interval from staff or the programme.

During the break, you can go out of the concert hall or studio theatre. You can use the toilets, visit the cafe and see other parts of our building.

A staff member will let you know when the show is to start again. They will make an announcement asking you to go back into the concert hall or studio theatre.



During the performance

Laughing and Clapping

During the performers, the people on stage might make a joke. Some of the audience might laugh. You can laugh too, if you want to.

Some audience members may find the clapping is too loud.

During the show and at the end, some people might clap to show they are enjoying the performance. You can clap too if you want to.

If it is too loud for you, you can put your hands over your ears.



The end of the performance

You will know it is the end of the show because the people on stage will bow.

As people leave, it may mean the foyer will be busy. You can wait in the event space until it is quieter before you leave.



THE MARTIN HARRIS CENTRE
FOR MUSIC AND DRAMA

The Martin Harris Centre for Music and Drama
The University of Manchester
Bridgeford Street, off Oxford Road
Manchester M13 9PL

Telephone (enquiries only): 0161 275 8951

Email (enquiries only): boxoffice@manchester.ac.uk

Online tickets: www.quaytickets.com

Telephone ticket booking: 0161 876 2015

www.manchester.ac.uk/mhc

 MHCentre

 @MHCentre



Royal Charter Number RC000797
DW3908.11.24