

Admissions UG and PG Applications Analysis Power BI app – User Guide

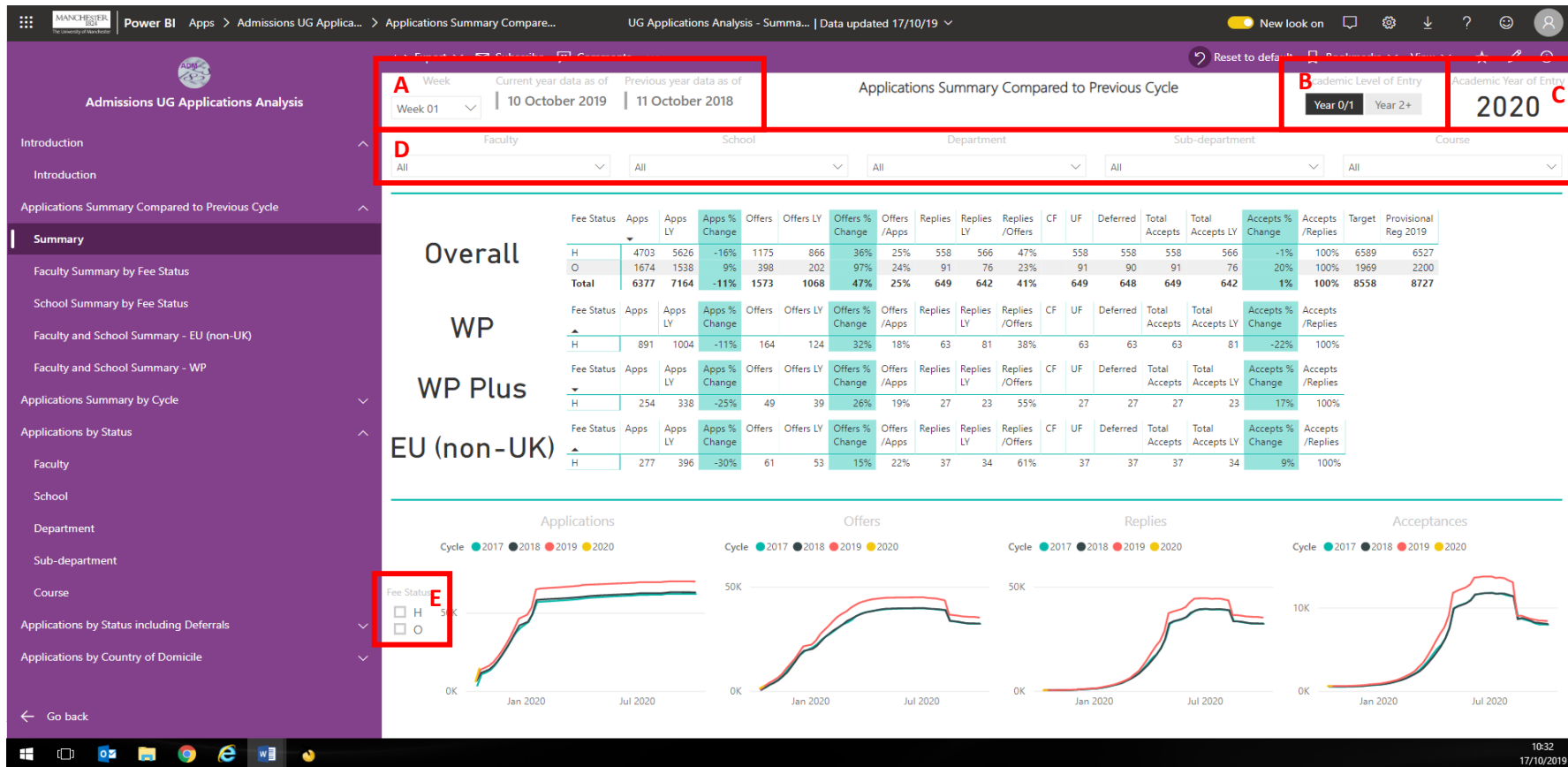
The document outlines the different filters that can be applied to the reports within these apps.

Undergraduate – [app link](#)

Section	Section Description
Introduction	Explanation of the data which is included and excluded in the report.
Applications Summary Compared to Previous Cycle	These reports display the number of applications, offers, replies and acceptances for the forthcoming academic year of entry against the previous academic year of entry, for any given week in the cycle; the default view is of the current week of the cycle. By default the report includes year 0/1 applications.
Applications Summary by Cycle	These reports display the number of applications, offers and acceptances for the forthcoming academic year of entry against previous academic years of entry, for any given week in the cycle and is aggregated by fee status. The default view includes this cycle and the previous three cycles for comparison. By default the report includes year 0/1 applications.
Applications by Status	These reports display the number of applications per status as well as the total number of offers and acceptances for the forthcoming academic year of entry against previous academic years of entry, for any given week in the cycle; the default view is of the current week of the cycle and includes this cycle and the previous three cycles for comparison. By default the report includes year 0/1 applications.
Applications by Status including Deferrals	These reports display the number of applications per status received during the current admissions cycle, for any given week in the cycle and is aggregated by fee status and year of entry. By default the report includes year 0/1 applications for the current week.
Applications by Country of Domicile	These reports display applications of overseas applicants and of home fee paying applicants from EU (excluding the UK). The reports compare the forthcoming academic year of entry against the previous academic year of entry, for any given week in the cycle.
Paginated Reports by Course	This section contains a version of the Course reports available within the 'Applications Summary by Cycle', 'Applications by Status' and 'Applications by Status including Deferrals' sections which are paginated and can be exported to PDF.

Postgraduate – [app link](#)

Section	Section Description
Introduction	Explanation of the data which is included and excluded in the report.
Applications Summary Compared to Previous Cycle	These reports display the number of applications, offers, replies and acceptances for the forthcoming admissions cycle against the previous cycle, for any given week in the cycle; the default view is of the current week of the cycle. The reports can be filtered by month of entry, mode of study and the forthcoming cycle or the one after.
Applications Summary by Cycle	These reports display the number of applications, offers and acceptances for the forthcoming admissions cycle against the previous cycle, for any given week in the cycle and is aggregated by fee status. The default view includes this cycle and the previous three cycles for comparison. The reports can be filtered by month of entry and mode of study.
Applications by Status	These reports display the number of applications per status as well as the total number of offers and acceptances for the forthcoming admissions cycle against previous cycles, for any given week in the cycle; the default view is of the current week of the cycle and includes this cycle and the previous three cycles for comparison. The reports can be filtered by month of entry and mode of study.
Applications by Country of Domicile	These reports display applications of overseas fee payers and of home fee paying applicants from EU countries excluding the UK. The reports compare the forthcoming academic year of entry against the previous academic year of entry, for any given week in the cycle; the default view is of the current week of the cycle. The reports can be filtered by month of entry and mode of study.
Paginated Reports by Course	(In progress) This section contains a version of the Programme reports available within the 'Applications Summary by Cycle' and 'Applications by Status' sections which are paginated and can be exported to PDF. The reports can be filtered by month of entry and mode of study.



A – This filter allows you to select which week you want to compare applications for the next academic year of entry against the previous year of entry. By default it will be set to the current week of the cycle. The text next to the filter shows which two dates you are comparing applications for.

B – (UG only) By default, every report except the country of domicile reports are set to include applications for year 0/1 as this is what the university’s targets and 1st December/provisional student numbers include. You can change this to view applications for year two and beyond but note, the targets won’t change as we don’t receive them for year 2+. If you uncheck an option it will include applications for all academic levels. (UG only)

C – (UG only) This field indicates that the data for the current cycle includes applications for the 2020/21 academic year of entry. This includes deferred entrants from previous cycles. They do not include applications from the current cycle for entry in 2021/22; for this you can use the Applications by Status including Deferrals report. (UG only)

D – You can use these filters to filter the tables and graphs by faculty, school, department (level 4), sub-department (level 5) or UCAS Course. If a course is not owned by a department or sub-department, these shows as ‘Other’ in the filter.

E – By default, the graphs include both home and overseas applications. But this filter can be used to change the fee status of the applications included in the graphs.

MANCHESTER UNIVERSITY OF APPLIED SCIENCES | Power BI Apps > Admissions UG Applica... > Applications by Status | UG Applications Analysis - Applicat... | Data updated 18/10/19

Admissions UG Applications Analysis

Week: Week 02

Academic Level of Entry: Year 0/1 Year 2+

Fee Status: **G** H O

Cycle: 2017 2018 2019 2020

Course	Cycle	Date	NEW	C	U	CD	UD	CI	UI	CF	UF	RJCT	W	Apps	Apps % Change	Offers	Offers % Change	Accepts	Accepts % Change
American Studies (3 Years)	2017	20 October 2016	10											18	Infinity	8	Infinity	8	Infinity
	2018	19 October 2017	3											7	-44%	7	-13%	7	-13%
	2019	18 October 2018												3	-70%	3	-57%	3	-57%
	2020	17 October 2019		1										2	-33%	2	-33%	1	-67%
American Studies (4 Years)	2018	19 October 2017	5											5	Infinity		-100%		-100%
	2019	18 October 2018	2	1										4	-20%	2	Infinity	1	Infinity
Ancient History	2017	20 October 2016	2	14										17	Infinity	15	Infinity	1	Infinity
	2018	19 October 2017	9											13	-24%	4	-73%	4	300%
	2019	18 October 2018		12										15	15%	15	275%	3	-25%
	2020	17 October 2019	2	8	1									13	-13%	11	-27%	2	-33%
Ancient History and Archaeology	2017	20 October 2016	2	12										14	Infinity	12	Infinity		-100%
	2018	19 October 2017	1	4										5	-64%	4	-67%		-100%
	2019	18 October 2018	1	10	1									12	140%	11	175%		-100%
	2020	17 October 2019	3	4								1		8	-33%	4	-64%		-100%
Ancient History and History	2017	20 October 2016	7											7	Infinity		-100%		-100%
	2018	19 October 2017	10											11	57%	1	Infinity	1	Infinity
	2019	18 October 2018	1	8										9	-18%	8	700%		-100%
	2020	17 October 2019	1	6										7	-22%	6	-25%		-100%
Arabic and a Modern European Language	2017	20 October 2016	25											28	Infinity	3	Infinity	3	Infinity
	2018	19 October 2017	26											26	-7%		-100%		-100%
	2019	18 October 2018	29											31	19%	2	Infinity	2	Infinity
	2020	17 October 2019	26											28	-10%	2	0%	2	0%
Arabic Studies	2017	20 October 2016	6											6	Infinity		-100%		-100%
	2018	19 October 2017	6											6	0%		-100%		-100%
	2019	18 October 2018	12											12	100%		-100%		-100%
	2020	17 October 2019	5											6	-50%	1	Infinity	1	Infinity
Archaeology	2017	20 October 2016	2	4										6	Infinity	4	Infinity		-100%
	2018	19 October 2017	1	6	1									8	33%	7	75%		-100%
	2019	18 October 2018		5										6	-25%	5	-29%		-100%
	2020	17 October 2019	2	2										4	-33%	2	-60%		-100%

F – The Applications Summary by Cycle and Applications by Status reports can show the next academic year of entry and up to the previous three years’ worth of data, as of the week selected in the filter. The date that the data is as of is displayed in this column. You can use the filter in box ‘H’ to reduce the number of cycles shown in the report.

G – The Applications by Status report displays applications for all fee statuses by default, but this filter can be used to restrict the data to either show just ‘H’ (home) or ‘O’ (overseas) applications. Applicants who are still undergoing fee assessment and have a status of ‘Z’ are included in the overseas numbers as many of these end up paying the overseas fee.

H – By default the Applications Summary by Cycle and Applications by Status reports include data for the next academic year of entry and the previous three years. This filter can be used to restrict the years visible in the report.

I – As no data prior to the 2017 cycle is included in the app, the % change calculations for 2017 display “infinity”.

MANCHESTER The University of Manchester | Power BI Apps > Admissions UG Applica... > Applications by Status including ... UG Applications Analysis - Applicat... | Data updated 22/10/19

Admissions UG Applications Analysis

Export | Subscribe | Comments

Week 03 | Current year data as of 21 October 2019

Applications by Status including Deferrals Faculty

Academic Level of Entry: Year 0/1 | Year 2+

Faculty: All

Academic Year of Entry Faculty	2020							2021						
	NEW	C	U	CD	UD	UF	RJCT	W	Total	NEW	C	U	RJCT	W
Faculty of Biology, Medicine and Health	4325	141	1			108	108	11	5580	142	7	1	1	151
H	4876	113	1			145	162	12	5309	117	7	1	1	126
O	1557	28				23	24	5	1637	25				25
Faculty of Humanities	2232	2012	115	3	1	370	96	7	4836	117	82	2	1	202
H	1552	1516	87	3	1	328	64	5	3556	114	81	1	1	197
O	680	496	28			42	32	2	1280	3	1	1		5
Faculty of Science and Engineering	3297	605	23			112	21	5	4063	59	5			64
H	2048	129	3			81	5	4	2270	44				44
O	1249	476	20			31	16	1	1793	15	5			20
Total	11962	2758	139	3	1	650	303	29	15845	318	94	2	2	417

Go back

J – (UG only) In the deferrals report, only data for the current cycle is visible unlike other reports which compare the data to previous cycles. This is why only the current date is showing in box 'J'.

K – (UG only) The deferrals report includes applications from the current cycle only and breaks down the number of applications by the academic year of entry. It does not include deferred applications from previous cycles for 2020 entry unlike the other reports.

MANCHESTER THE UNIVERSITY OF MANCHESTER | Power BI Apps > Admissions UG Applica... > Applications by Country of Domicile... UG Applications Analysis - Applicat... | Data updated 22/10/19

Admissions UG Applications Analysis

Sub-department
Course
Applications by Status
Faculty
School
Department
Sub-department
Course
Applications by Status including Deferrals
Faculty
School
Department
Sub-department
Course
Applications by Country of Domicile
Overseas Applications
Overseas Applications (Top Markets)
EU (non-UK) Applications
Go back

Week: Week 03 | Current year data as of: 21 October 2019 | Previous year data as of: 25 October 2018

Overseas Applications Summary by Country of Domicile

Academic Level of Entry: Year 0/1 | Year 2+ | Academic Year of Entry: 2020

Faculty: All | School: All | Department: All | Sub-department: All | Course: All

Country of Domicile: All

Fee Status	Apps	Apps LY	Apps % Change	Offers	Offers LY	Offers % Change	Offers /Apps	Replies	Replies LY	Replies /Offers	CF	UF	Deferred	Total Accepts	Total Accepts LY	Accepts % Change	Accepts /Replies
O	4738	3856	23%	1145	1059	8%	24%	97	79	8%	97		95	97	79	23%	100%

Applications | Offers | Replies | Acceptances

Cycle: 2017 (blue), 2018 (black), 2019 (red), 2020 (yellow)

L – The Overseas applications report can be filtered by Country of Domicile.

MANCHESTER UNIVERSITY | Power BI Apps > Admissions UG Applica... > Applications by Country of Domicile | UG Applications Analysis - Applicat... | Data updated 22/10/19

Admissions UG Applications Analysis

Sub-department
Course

Applications by Status

Faculty
School
Department
Sub-department
Course

Applications by Status including Deferrals

Faculty
School
Department
Sub-department
Course

Applications by Country of Domicile

Overseas Applications (Top Markets)

EU (non-UK) Applications

← Go back

Week: Week 03 | Current year data as of: 21 October 2019 | Previous year data as of: 25 October 2018

Overseas Applications by Country of Domicile

Academic Level of Entry: Year 0/1 | Year 2+

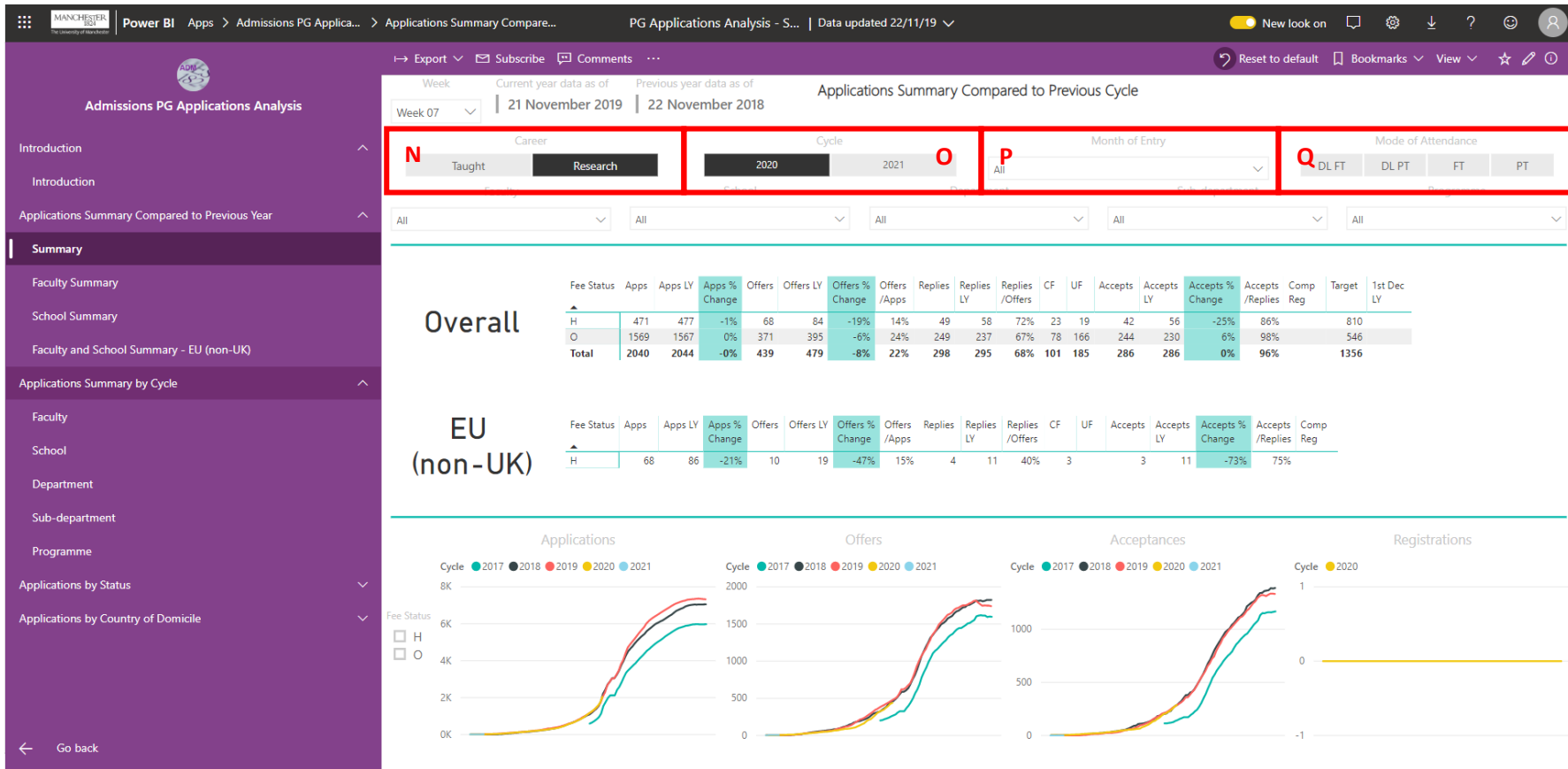
Top Markets: All Markets | **Top 25 Markets**

Country of Domicile	2020 Apps Ranking	2020 Apps	Apps % Change 19-20	2019 Apps	Apps % Change 18-19	2018 Apps	Offers 2020	Offers % Change 19-20	2019 Offers	Offers % Change 18-19	2018 Offers	Accepts 2020	Accepts % Change 19-20	2019 Accepts	Accepts % Change 18-19	2018 Accepts
China	1	1568	28%	1229	54%	799	480	6%	454	55%	292	6	Overseas Applications %	13		13
United Kingdom	2	442	28%	346	-1%	350	50	32%	38	-21%	48	12				
Malaysia	3	420	50%	280	2%	275	158	32%	120	3%	116	4	-20%	5	-29%	7
Hong Kong	4	319	36%	234	1%	232	81	25%	65	-23%	53	8	167%	3	-25%	4
India	5	304	36%	223	27%	176	74	54%	48	0%	48	6	50%	4	0%	4
Singapore	6	234	26%	185	-11%	207	48	17%	41	-40%	68	10	43%	7	-61%	18
United States	7	132	15%	115	-7%	123	28	100%	14	-13%	16	3	200%	1	Infinity	
United Arab Emirates	8	116	21%	96	78%	54	13	-13%	15	0%	15	2	0%	2	-33%	3
Kuwait	9	114	20%	95	-7%	102		-100%	3	200%	1		-100%		-100%	1
Saudi Arabia	10	73	16%	63	91%	33	7	-30%	10	233%	3	4	-56%	9	350%	2
Canada	11	67	-15%	79	23%	64	6	0%	6	200%	2	1	-50%	2	100%	1
Korea, Republic of	12	65	0%	65	27%	51	12	-40%	20	-54%	13	2	100%	1	-50%	2
Pakistan	13	64	-20%	80	11%	72	13	-46%	24	14%	21	1	-75%	4	-20%	5
Thailand	14	49	-6%	52	4%	50	11	-45%	20	5%	19		-100%	1	-80%	5
Nigeria	15	40	29%	31	19%	26	13	86%	7	40%	5	6	100%	3	0%	3
Australia	16	37	131%	16	-41%	27	6	20%	5	-29%	7	2	100%	1	-50%	2
Indonesia	17	32	-24%	42	5%	40	11	-21%	14	27%	11		-100%		-100%	
Norway	18	29	16%	25	-11%	28	14	56%	9	-25%	12	4	33%	3	0%	3
Sri Lanka	19	28	180%	10	11%	9	8	300%	2	0%	2	2	100%	1	Infinity	
Egypt	20	27	-7%	29	-3%	30	2	-80%	10	150%	4		-100%	3	50%	2
Japan	21	26	30%	20	18%	17	5	-38%	8	60%	5		-100%		-100%	
Qatar	21	26	8%	24	41%	17	2	-50%	4	33%	3	1	Infinity		-100%	2
Russian Federation	23	23	-12%	26	37%	19	11	38%	8	100%	4	1	0%	1	Infinity	
Turkey	23	23	-36%	36	125%	16	4	-56%	9	80%	5	1	-50%	2	100%	1
Taiwan, Republic of China	25	22	47%	15	-12%	17	4	33%	3	-50%	6	1	Infinity		-100%	1
Total	1	4280	25%	3416	21%	2834	1061	11%	957	23%	779	77	15%	67	-27%	92

Grand Total including all markets

4738	3856	23%
Applications 2020	Applications 2019	Applications % Change 19-20
1145	1059	8%
Offers 2020	Offers 2019	Offers % Change 19-20
97	79	23%
Acceptances 2020	Acceptances 2019	Acceptances % Change 19-20

M – By default the Overseas Applications (Top Markets) report is set to show the top 25 countries based on the number of applications received for the next academic year of entry. To view the number of applications for every country, set the filter to 'All Markets'.



N – (PG only) In the PG app, you can filter the report to either postgraduate taught applications or postgraduate research.

O – (PG only) The Summary Compared to Previous Year report in the PG app can be filtered by the forthcoming cycle or the one after. Each cycle is based on applications for entry between December of one year and November of the next. For example, the 2020 cycle includes applications for entry between December 2019 and July 2020 of the 2019/20 academic year, and August 2020 and November 2020 of the 2020/21 academic year. This is in order to align with the university’s student number planning cycle for 1st December census.

P – (PG only) PG apps can be filtered by month of entry. By default the report includes all entry points.

Q – (PG only) PG apps can be filtered by mode of attendance, however, as full-time and part-time targets include both on-campus and distance learning courses, if the report is filtered by, for example, DL FT, the target and 1st December number shown will include all full-time targets and student numbers.

The screenshot shows a Power BI report interface. The top navigation bar includes the Manchester University logo, 'Power BI Apps', and the report title 'Applications Summary by Cycle'. A red box highlights the 'Parameters' section, which contains the following controls:

Parameter	Value
Faculty	Required
School	[Empty]
Department	[Empty]
Sub-department	[Empty]
Week	Week 04
Cycle	2017,2018,2019,2020
Academic Level	Year 0/1

To the right of these controls is a yellow 'View Report' button and a red 'R' icon. The left sidebar shows a navigation menu with 'Applications Summary by Cycle' selected.

R – In paginated reports you must select one or more values for every parameter before the report will run. Schools appear in the parameter list after you have selected one or more Faculties, Departments appear after you have selected one or more Faculties and Schools and so on. After you have populated all the parameters, click View Report. The report exports well to PDF. Exporting to Word can result in some data on the margins of the report being cut off.