



Global University Engagement Summit

The University of Manchester | 9-10 September 2019

Contents

	page
Welcome	3
Summit Dinner	4-5
Programme at a glance	6-7
Programme sessions	8-9
Delegates	10-26
Social responsibility	28
About Manchester	30
Getting to and from Manchester	31
Things to see and do in Manchester	32-33
Getting around Manchester	34

Welcome

I'm delighted to welcome you to The University of Manchester for this Global University Engagement Summit.



Our first gathering, at The University of Melbourne in 2017, was a valuable opportunity to build a community of like-minded institutions and leaders to share perspectives and practices on the role of universities in engaging society.

Our theme for this second gathering in Manchester is 'Future Civic Universities'. We'll examine our shared challenge in undertaking meaningful and effective engagement with our surrounding communities, cities, regions and nations at a time when there is increasing public scepticism towards universities and the 'experts' who inhabit them.

This will be an interactive and participatory summit of 65 leaders from 14 different countries. I want to thank our organising committee, our media partner Wonkhe and everyone who's contributed to a programme that promises to be thought-provoking and I hope impactful.

Professor Dame Nancy Rothwell,
President and Vice-Chancellor, The University of Manchester

Monday 9 September | 6.30pm

Summit Dinner

Living World’s Gallery, Manchester Museum, Oxford Road, M13 9PL

Dinner speakers

Esme Ward
Director of Manchester Museum

Esme was appointed Director in April 2018, and is the first woman to hold this role in its’ 125 year history: ‘I’m delighted to welcome delegates from around the world to Manchester Museum – a space that provides rich opportunities for everyone between the University and wider society.’

Manchester Museum is a ‘global’ museum, dedicated to bringing people from all backgrounds together to provoke debate and reflection about the past, present and future of earth and its inhabitants.

First opened in 1890, in a beautiful, Grade II listed building designed by the renowned Victorian architect Alfred Waterhouse, the Museum has been delighting, inspiring and educating our visitors for over 125 years. Home to world-class collections of human and natural history (over 4.8 million items from across the globe, collected over three centuries), Manchester Museum is the largest University museum in the country. It is renowned for its award-winning schools programmes (30,000 visits per year), public engagement and volunteering initiatives.



Lemn Sissay
Poet and Chancellor of University of Manchester

Lemn is a poet, author and broadcaster. He is a trustee of The Manchester International Festival, and patron of the Letterbox Club. He is a fellow and trustee of the Foundling Museum and was official poet of the London 2012 Olympics.

His Landmark Poems are installed throughout Manchester and London. Lemn was elected Chancellor of the University of Manchester

in 2015, and in that time has contributed to the University significantly on a local, national and international scale. In 2017 he launched the Lemn Sissay Law Bursaries, which aims to address underrepresentation of black males in the legal profession. Further afield, Lemn has helped the University expand our Equity and Merit Scholarships for funded master’s degrees for students from Sub-Saharan Africa.



Tuesday 10 September | 9am - 6.15pm

Programme at a glance

Whitworth Hall, The University of Manchester, Oxford Road, M13 9PL

9am - 9.15am	Welcome: Professor Dame Nancy Rothwell , The University of Manchester Mark Leach , Founder and CEO of Wonkhe & Summit Chair
9.15am - 10.15am	Key note speech: Professor Brian Cox , The University of Manchester
10.15am - 11.20am	Session one: The global rise of scepticism towards universities
11.20am - 11.50am	Break
11.50am - 1pm	Session two: Civic universities
1pm - 2.15pm	Lunch
2.15pm - 3.30pm	Session three: Community perspectives on university engagement
3.30pm - 3.50pm	Break
3.50pm - 5pm	Session four: Demonstrating quality in engagement
5pm - 5.15pm	Closing remarks
5.15pm - 6.15pm	Drinks Reception

An interactive microsite, containing videos, slides and further information will be posted following the Summit at:
www.manchester.ac.uk/gues19

Professor Brian Cox OBE

9.15am - 10.15am

Professor Brian Cox is Professor of particle physics in the School of Physics and Astronomy at the University of Manchester. He is a renowned broadcaster and has presented a number of programmes across television and radio on subjects of science, astronomy, physics and natural life. He has also been an expert advisor for feature films. In addition to his work in broadcasting, Brian continues to teach Physics to undergraduate students at the University of Manchester, and was part of the team working on the Large Hadron Collider at CERN in Switzerland. He received his OBE for services to Science in the Queen's Birthday Honours list in 2010.

In this keynote session, Professor Cox will be exploring the role of experts in an era of growing scepticism towards universities and evidence-based research. Brian will be discussing how universities can better engage the public, and how they can enhance public trust.



Tuesday 10 September | 10.15am - 5pm

Programme sessions

Whitworth Hall, The University of Manchester, Oxford Road, M13 9PL

Session one: The global rise of scepticism towards universities 10.15am - 11.20am	
Themes	Chair and Speakers
<p>The last few years has seen a fundamental shift in the public sphere around the politics of identity and globalisation. Universities in particular have faced increased scepticism regarding their contribution to society, and the role they play in perpetuating, and even creating, social and economic divides. This challenging session will explore:</p> <ul style="list-style-type: none">• What forces lie behind the increasing global scepticism towards universities?• How does the rise of scepticism and populism impact on universities?	<p><i>Chair</i> Professor Meric Gertler, President, University of Toronto</p> <p><i>Speakers:</i></p> <ul style="list-style-type: none">• David Goodhart, Head of Policy Exchange’s Demography, Immigration, and Integration Unit and author of <i>The Road to Somewhere: The Populist Revolt and the Future of Politics</i>• Mark Leach, Founder and CEO of Wonkhe
Session two: Future civic universities 11.50am - 1pm	
Themes	Chair and Speakers
<p>This session will explore the role of place-based engagement activities of universities and ask:</p> <ul style="list-style-type: none">• How does the notion of ‘civic’ universities contribute to understanding place-based initiatives of universities?• Are there boundaries to what a university can be expected to contribute to its city-region?• How do universities balance their local and global functions?	<p><i>Chair</i> Baroness Bull CBE, Vice President & Vice Principal (London), King’s College London</p> <p><i>Speakers:</i></p> <ul style="list-style-type: none">• The Rt Hon Lord Kerslake FAcSS, Crossbench life peer in the House of Lords and Chair of the Civic University Commission• Professor Rocky Tuan, Vice-Chancellor and President, Chinese University of Hong Kong• Derek Douglas, Vice-President for Civic Engagement and External Affairs, University of Chicago

Session three: Community perspectives on university engagement 2.15pm - 3.30pm	
Themes	Chair and Speakers
<p>This session will explore different facets of engagement with universities by citizens from local communities. It will capture ways in which the purpose, mission and quality of work by universities can be enhanced through high quality community engagement.</p> <p>This session will invite participants from outside universities to offer their perspectives to leaders on key aspects of engagement.</p>	<p><i>Chair</i> Dr Lorlene Hoyt, Executive Director of Talloires Network; Research Professor, Tufts University</p> <p><i>Community Speakers:</i></p> <ul style="list-style-type: none">• Community co-researcher perspective: Professor Paul Chatterton, University of Leeds; Stephanie Robinson, youth campaigner, climate activist and co-researcher• Parent perspective: Jennifer McIntyre, lead for ‘Parent Power’ initiative; Jimmy Pickering, Widening Participation Manager (Post-16), King’s College London• Employee perspective: Simone Sam-Akrobutu, local resident and University of Manchester employee via ‘The Works’ initiative; and Dr Julian Skyrme, Director of Social Responsibility, The University of Manchester• Small business perspective: Lee Wakeham, Founder and CEO of HMPasties ; Alison Shedlock, Head of Hospitality and Catering, The University of Manchester• Graduate perspective: graduate of University of Manchester Access Programme; Stephanie Lee, Head of Widening Participation• Local older resident and co-researcher perspective: Elaine Unegbu, local resident and age friendly champion; Dr Tine Buffel of The University of Manchester Institute for Collaborative Research on Ageing (MICRA)
Session four: Demonstrating quality in engagement 3.50pm - 5pm	
Themes	Chair and Speakers
<p>This session will critically examine why and how measures of quality in engagement are important for universities. This session will explore:</p> <ul style="list-style-type: none">• Why do we need to demonstrate quality in engagement?• How do we understand quality in engagement practice?• What are the roles of quality marks/watermarks and league tables?• What ‘counts’ when we attempt to demonstrate quality in engagement?	<p><i>Chair</i> Dr Julie Wells, Vice-President (Strategy and Culture), University of Melbourne</p> <p><i>Funders perspective</i></p> <ul style="list-style-type: none">• Professor Glyn Davis, Paul Ramsay Foundation• Sudarshan Suchi, Reliance Foundation <p><i>Speakers:</i></p> <ul style="list-style-type: none">• Duncan Ross, Chief Data Officer, Times Higher Education• Professor Jonathan Grant, Vice President & Vice Principal (Service), King’s College London• Sophie Duncan, Co-Director of National Co-ordinating Center for Public Engagement, Engage Watermark• Professor Anthony Monaco, President of Tufts University and Chair of Talloires Network

Delegates

Host

Professor Dame
Nancy Rothwell
DBE FRS



President and Vice
Chancellor, The University
of Manchester

Professor Nancy Rothwell is President and Vice Chancellor of the University of Manchester, where she also holds a Chair in Physiology. Her ongoing research in neuroscience has contributed towards major advances in the understanding and treatment of brain damage in stroke and head injury. She became a Fellow of the Royal Society in 2004 and in 2005 was honoured with a DBE. Nancy was the founding President of the Royal Society of Biology, and has served as a non-executive director of AstraZeneca. She is currently co-Chair of the Prime Minister’s Council for Science and Technology, a Deputy Lieutenant for Greater Manchester, Chair of Corridor Manchester Board, a member of the Greater Manchester Local Enterprise Partnership (LEP) Board and a member of the Northern Powerhouse Partnership Board.

Programme Committee

Sophie Duncan

Co-Director of the
National Co-ordinating
Centre for Public
Engagement (NCCPE)



Sophie Duncan co-directs the NCCPE, an organisation established in 2008, which supports universities to engage effectively with the public. Since its early days the NCCPE have sought to provide tools and resources to the sector, to cultivate the conditions where high quality engagement can thrive. Sophie manages the overall work of the centre including communications, partnerships and NCCPE projects.

A physicist by training, she has worked in engagement throughout her career including at the Science Museum, NESTA and the BBC, where she led national engagement campaigns.

James Green

Director, Engagement
Strategy, The University
of Melbourne



James’ focus is on implementing *Engagement at Melbourne 2015–2020*, the University’s first strategy for engaging with business, government and communities. James previously served as an adviser to the University’s Vice-Chancellor, and as an economist advising governments and companies on the design and evaluation of public policy.

James holds degrees in Economics and Commerce from the University of Adelaide, a Master of Business Administration from Melbourne Business School, and is a Graduate of the Australian Institute of Company Directors.

Dr Lorlene Hoyt

Executive Director
of Talloires Network;
Research Professor
at Tufts University



Dr Lorlene Hoyt is a Research Professor in the Department of Urban and Environmental Policy and Planning, a faculty member of the Tisch College of Civic Life at Tufts University, a Visiting Scholar in the Department of Education at Brown University, and the Executive Director of the Talloires Network. From 2002-2011, she served as Assistant then Associate Professor of Urban Planning at the Massachusetts Institute of Technology (M.I.T.) where she founded MIT@Lawrence, an award-winning city-campus partnership with the City of Lawrence, Massachusetts. She holds a PhD in City and Regional Planning from the University of Pennsylvania.

Paul Manners

Founding Director of the
National Co-ordinating
Centre for Public
Engagement



Paul Manners is Associate Professor in Public Engagement at the University of the West of England and founding

Delegates

Zac Ashkanasy

Principal, Nous Group



Zac is an award-winning Principal with Nous Group. Zac brings almost 25 years’ business, consulting and facilitation experience across a range of clients in in the UK, Canada, South-East Asia and Australia. He has extensive experience working with higher education institutions.

Zac’s work combines a keen strategic brain, extensive experience in strategy and design, knowledge about the effective interaction of people and information, and effective leadership skills. Executives and staff value his innovative and practical mind-set, and engaging nature. Zac has an MBA from Melbourne Business School (Dean’s Commendation) and a Bachelor of Commerce, University of Queensland.

Professor
Sharon Bell

Deputy Vice Chancellor
of Strategy and Planning,
Western Sydney University



Professor Sharon Bell is an academic leader with over twenty-five years of leadership experience in the Australian higher education sector. She is an Honorary Professor at the Australian National University and an Emeritus Professor at the University of Wollongong. Her significant contribution service to tertiary education, and as an advocate for gender equity, was recently recognised

when she was made a Member of the Order of Australia.

Sharon holds a PhD from the University of Sydney in the discipline of Anthropology. Over the past decade she has focused her ethnographic gaze on the academy and higher education policy.

Professor
Dinah Birch CBE

Pro Vice Chancellor for
Cultural Engagement,
University of Liverpool



Professor Dinah Birch is Pro Vice Chancellor for Cultural Engagement and Professor of English Literature at the University of Liverpool.

Dinah took an active role in the REF2014 submission and is Chair of the main panel in 2021. Her external roles include Chair of Advisory Council for University of London’s Institute of English Studies, Chair of Editorial Board of The Conversation, Chair of the Advisory Board of The Ruskin Library and Research Centre Lancaster University, and President of British Association for Victorian Studies. Dinah is also a member of the Foundation for Art and Creative Technology (FACT) Board and Fabric Advisory Committee at Liverpool Cathedral.

She served as a member of the Man Booker prize panel in 2012. She is a regular broadcaster and contributor to the Times Literary Supplement and London Review of Books.

Delegates

Professor Keith Brown

Vice President and Dean of Faculty of Humanities, The University of Manchester



Professor Keith Brown joined The University of Manchester in 2010 as Vice President and Dean of the Faculty of Humanities. The Faculty of Humanities is the largest of the University’s three faculties with 17,000 students, around 2,000 academic and professional support staff and a diverse portfolio of disciplines organised around the Schools of Arts, Languages and Cultures, Environment, Education and Development, Law, Social Sciences, and the Alliance Manchester Business School.

Keith is a Fellow of the Royal Historical Society and a Fellow of the Royal Society of Edinburgh. His field of research is early modern Scottish and British History. He led the team that in 2007 launched the acclaimed online archive of the proceedings of the original Scottish Parliament. He has published a three-volume edited history of the Scottish Parliament and a monograph entitled Noble Power in Scotland from the Reformation to the Revolution (Edinburgh University Press 2011). Currently, he is working on Scottish migration to England in the sixteenth to eighteenth century for which he held an Arts and Humanities Research Council (AHRC) Network Grant.

Baroness Deborah Bull CBE

Vice President & Vice Principal (London), King’s College London



Baroness Bull provides leadership for the university’s London strategy – one of five priorities within Vision 2029 – which sets out shared ambitions to draw London into King’s and King’s into London, maximising the potential of the university’s location in the heart of the capital.

As Senior Advisory Fellow for Culture, she provides high level leadership for the university’s cultural strategy, supporting King’s ambitions through mutually beneficial partnerships with artists and cultural organisations in London and beyond.

Deborah joined King’s in 2012 following a long and successful career in the arts, first as a performer and then as a creative leader and cultural commentator. She also sits as a Crossbench Peer in the House of Lords.

Jim Collins

Director, London Strategy & Planning, King’s College London



Jim is responsible for the implementation of King’s London strategy which includes a commitment to deepen partnerships within local boroughs, to shine a spotlight

on collaborations already in place and to develop new approaches that empower staff and students to work even more closely with local communities to address shared challenges.

Jim joined King’s from UCL where he was Principal Partnerships Manager (London), leading the development and implementation of the university’s engagement strategies, developing collaborations between UCL and organisations across London. Prior to working in higher education, Jim was a Publisher and Commissioning Editor for a variety of academic publishers.

Professor Sheena Cruickshank

Academic lead for Public Engagement, The University of Manchester



Professor Sheena Cruickshank is a Senior Lecturer in Immunology and also the University Academic Lead for Public Engagement with Research. She is also Public Engagement secretary and trustee for the British Society for Immunology (BSI). She has just been awarded an AAAS Leshner Fellowship for public engagement with Science.

Sheena’s research aims to understand how immune responses in the gut response are initiated and controlled in response to infection and/or inflammation. Her work on public engagement looks at science

communication and enabling access to science for non-native English speakers and Working with communities to understand allergies and the impacts of pollution.

Sheena has received awards and commendations for her outreach including the Royal Society of Biology Awards and NCCPE Engage finalist and has made various TV and radio appearances.

Dr Joanne Curry

Vice President, External Relations, Simon Fraser University




Dr Curry’s 25-year career has focused on expanding access to university education in underserved regions and supporting the university’s capacity to enhance the wellbeing of its communities. Joanne led the development of SFU’s first community engagement strategy and oversaw the extensive consultation process that resulted in SFU’s vision as Canada’s Engaged University. Her research is focused on building effective university-city government relationships.

Joanne is SFU’s lead for community and government engagement, and communications. Her portfolio includes SFU’s two campuses, which are embedded in city centres, along with offices of community engagement, a cultural unit, galleries, a centre for dialogue, and SFU Public Square.

Professor Glyn Davis AC

Chief Executive Officer, Paul Ramsay Foundation



Professor Glyn Davis AC is CEO of the Paul Ramsay Foundation, Australia’s largest philanthropic fund. He was previously Vice-Chancellor at the University of Melbourne. Alongside his role at the Foundation, Glyn Davis holds a number of academic appointments, including visiting professorships in political science at University of Manchester, King’s College and Oxford universities. His most recent book is *The Australian Idea of a University*.

Professor Chris Day

Vice Chancellor and President, Newcastle University



Professor Day is a Consultant Hepatologist with an international reputation in medical research, he is a Fellow of the Academy of Medical Sciences. He has served on the Council of the Medical Research Council and the Executive of the Medical Schools Council. Chris is currently a member of the Universities UK board, Chair of the Office for Strategic Co-ordination of Health Research (OSCHR), and, for REF 2021, will Chair the institutional environment pilot

panel, which will pilot the assessment of the research environment at institution level. Professor Day is also a Deputy Lieutenant of Tyne and Wear.

Derek R. B. Douglas

Vice President for Civic Engagement and External Affairs, The University of Chicago



Derek leads local, regional, national and global efforts concerning civic engagement, corporate partnerships and urban development including efforts to engage with, and have a direct impact on, the lives of people living in Chicago and cities across the country and around the world.

He manages a portfolio of outward-facing University operating units, including Commercial Real Estate/Economic Development, Office of Business Diversity, Office of Civic Engagement, Office of Corporate Relations, and the Offices of Federal and State Government Relations. Has oversight responsibility for the civic/community engagement work of the University of Chicago Medical Center; spearheads the University’s global cities work in partnership with the Global Engagement Office; sits on the three-member Executive Committee for the Polsky Center for Innovation and Entrepreneurship, which governs the University’s innovation and entrepreneurial activities.

Delegates

From 2009 through 2012, served on the White House Domestic Policy Council as Special Assistant to President Barack Obama for Urban Affairs. In this role, Derek led the White House’s work on urban and metropolitan policy issues.

Professor Shaun Ewen
Pro Vice-Chancellor (Indigenous), The University of Melbourne



Professor Shaun Ewen is responsible for the Indigenous strategy at the University of Melbourne. Shaun advocates for a uniquely Australian approach to engagement, which recognises ‘place’ and the richness of Indigenous Australian Knowledge traditions which have historically been marginalised from the academy.

Shaun has a clinical background in physiotherapy, and holds postgraduate qualifications in international relations and education. His area of research expertise relates to Indigenous health and health professional education.

Professor Colette Fagan
Vice President for Research, The University of Manchester



Professor Colette Fagan, FAcSS, is the University’s Vice President for Research.

She is responsible for leading and implementing the University’s research strategy and doctoral training.

Previously Colette was the Deputy Dean and Vice-Dean for Research for the Faculty of Humanities (2010–17). She was elected to Senate in 2008 and in 2009 joined the University Board of Governors as a Senate-elected representative, with her term of office renewed twice by election (2009–18). She is an editorial board member of The Conversation.

Colette’s research focus is on employment, working conditions and job quality; with particular interests in gender relations and inequalities in the workplace and in family life, working time and time use, and international comparative analysis. Her research has been supported by major national and international funders, including the UK’s Economic and Social Research Council and the European Union’s research framework programmes. Her record of knowledge exchange and impact formed one of the University’s REF 2014 impact cases for sociology. She is the UK national academic expert in the European Commission’s Expert Network on Employment and Gender Equality (SAAGE) and one of the two academics appointed to Eurofound’s Advisory Board on Working Conditions and Sustainable Work (the European Commission’s tri-partite research and policy agency).

The Honourable Verity Firth
Executive Director for Social Justice, Centre for Social Justice and Inclusion, University of Technology Sydney



Verity leads the Centre for Social Justice and Inclusion, implementing the UTS Social Impact Framework, an Australian first in the university sector. The Centre facilitates socially impactful community partnerships – these currently include the impact of emerging technologies on human rights (with the Australian Human Rights Commission), and enhancing dialogue on social issues and public policy (with the Australian Council of Social Services) - and oversees Shopfront, UTS’s service learning program, and its widening participation school outreach programs. Verity has many years’ experience in government, not-for-profit and education sectors, including as NSW Minister for Education and Australian Public Education Foundation CEO.

Professor Stephen Flint
Associate Vice President for Internationalisation, The University of Manchester



Professor Steve Flint served as Interim Vice President and Dean of Faculty and took up the newly established

position of Associate Vice President for Internationalisation in November 2015. He leads on the development of global strategic partnerships and is Chair of the Universities UK PVCs-International network.

In this role, Steve leads the University internationalisation strategy, which is focused on not only supporting the University’s outward global ambitions, but also ensuring the internationalised experience of our campus-based students.

Professor Luke Georghiou
Deputy Vice Chancellor, The University of Manchester



Professor Luke Georghiou is Deputy President and Deputy Vice-Chancellor at the University of Manchester, providing strategic leadership and operational management across the full-range of University functions.

From 2010 to 2017 Luke was responsible for the University’s research strategy and its implementation and doctoral training. In his current role he continues to be responsible for business engagement and commercialisation activities. He is active in research and policy advice to governments and business with current work on innovation management, public procurement and innovation and evaluation of the national demonstrator project for the Internet of Things (CityVerve).

Professor Meric Gertler CM
Vice Chancellor and President, University of Toronto



Meric Gertler is President of the University of Toronto, and one of the world’s foremost authorities on cities, innovation and economic change. He has advised governments in Canada, the US, and Europe, and international agencies including the OECD and EU.

He chairs the U15 Group of Canadian Research Universities, co-chairs the Business-Higher Education Roundtable, and serves on the board of The Hospital for Sick Children, MaRS Discovery District and Universities Canada.

Among his many accolades, he is a Fellow of the Royal Society of Canada, the Academy of Social Sciences (UK), and the Royal Canadian Geographical Society; a Corresponding Fellow of the British Academy; and a member of the Order of Canada.

Mike Gibbons
Director of External Relations and Deputy Registrar, Manchester Metropolitan University



As Director of External Relations and Deputy Registrar, Mike oversees the University’s activities in relation to student recruitment

and admissions (including widening participation), marketing, public affairs, communications, international relations as well as alumni and development.

Mike was formerly Director of Student Recruitment and International Development at the University of Manchester, which included responsibility for domestic student recruitment, widening participation, as well as leading the development of the University’s wider Internationalisation Strategy.

Mike has represented the UK Higher Education Sector in a variety of national fora, most recently on the Joint Education Taskforce (JET), looking at student visa policy, alongside representatives from the wider education sector and government offices. He sat on the executive of the British Universities International Liaison Association (BUILA) from 2007 to 2014. He is a former Operating Board member of the British Council’s Education UK Partnership, of the UCAS International Board, and of NCUK’s Board of Directors. In 2013, Mike became an independent governor at Oldham Sixth Form College in Manchester, and is now Trustee for the recently-established Pinnacle Learning Trust.

Delegates

Professor Ana Elena González-Treviño

Director of the Centre for Mexican Studies, National Autonomous University of Mexico



Professor Ana Elena González-Treviño is the current Director of the Centre for Mexican Studies, UNAM-UK with offices in King’s College London to promote and systematize academic exchange and collaboration between UNAM and British universities. She is an alumna of Queen Mary University London and current Professor and researcher in English Literature at the Faculty of Philosophy and Letters of the National Autonomous University of Mexico (UNAM). She has authored and coordinated several volumes of literary and translation studies. She directs a digital humanities project, *Imaginary Mexico*, about seventeenth and eighteenth-century print culture. She is a member of the Critical Theory Seminar and the Digital Humanities Seminar.

David Goodhart

Author and Head of Demography, Immigration & Integration, Policy Exchange



David Goodhart is Head of Policy Exchange’s Demography, Immigration, and Integration Unit, and Director of

the Integration Hub website. He is a former Director of Demos, and former Editor of *Prospect* magazine, which he founded in 1995. David is a prominent figure in public debate in the UK, as a well-known broadcaster, author, commentator, and journalist. He has presented several BBC Radio 4 Analysis programmes. Before *Prospect*, he was a correspondent for the *Financial Times*, including a stint in Germany during the unification period. In 2013, he published *The British Dream*, a book about post-war multiculturalism, national identity, and immigration. It was runner up for the Orwell Book Prize in 2014. In 2017 he published *The Road to Somewhere: The new tribes shaping British politics*, about the value divides in western societies, which was a *Sunday Times* best-seller.

Dave Gorman

Director of Social Responsibility and Sustainability, The University of Edinburgh



Dave Gorman is currently Director for Social Responsibility and Sustainability at the University of Edinburgh having previously been SEPA’s Head of Strategy. After qualifying as an engineer, Dave took two years out to do a wide variety of community work, before returning to do a Masters in Energy and Environmental Systems at Glasgow Caledonian University. His current role includes senior leadership responsibility

for the University’s social responsibility and sustainability activities, as well as strategic advice on climate change issues, energy and a wide range of social responsibility and investment issues.

Louise Gough

Director of Service Strategy & Planning, King’s College London



Louise has worked at King’s College London since 2010, firstly in the Fundraising & Supporter Development Team and subsequently in the central Strategy, Planning and Analytics Team in the Principal and President’s Office. Significant projects have included developing and launching King’s Strategic Vision 2029, The Global Institute for Women’s Leadership, and the recently formed International School for Government. Louise is currently the Director of Strategy & Planning (Service), focusing on one of the 5 strategic priorities for King’s College London. Louise has a BA in Geography and a MSc in International Poverty Reduction and Development Management from the University of Birmingham. Prior to working at King’s, Louise worked in community development for a socially responsible agribusiness in Malawi.

Professor Jonathan Grant

Vice President and Vice Principal (Service), King’s College London



Professor Jonathan Grant is the Vice President and Vice Principal (Service) at King’s College London. Service has been identified as one of five strategic priorities in King’s Strategic Vision 2029, alongside Education, Research, London and International. Service encapsulates King’s commitment to society beyond education and research and will enable King’s to realise its vision to make the world a better place.

Jonathan’s main research interests are in R&D policy, research impact assessment and the use of research in decision making. Jonathan was previously Director of the Policy Institute at King’s, President of RAND Europe and Head of Policy at the Wellcome Trust.

Mitra Gusheh

Executive Manager, Social Impact, Centre for Social Justice and Inclusion, University of Technology Sydney



Mitra is a social impact practitioner with 20 years of experience across the higher education and the social sectors. Most recently, Mitra led the process for developing the Social Impact Framework

at the University of Technology Sydney. Previous to this, Mitra worked for a range of not-for-profit organisations where she was responsible for the strategic design, development and implementation of large-scale social change programs. This included establishing Oxfam Australia’s national youth program, the design and implementation of an advocacy program on child rights in Sri Lanka, and the design and implementation of an ICT-project in partnership with UNESCO in Nepal.

Patrick Hackett

Registrar, Secretary and Chief Operating Officer, The University of Manchester



Patrick Hackett took up his role as Registrar, Secretary and Chief Operating Officer in October 2018. Previously Patrick was Deputy Vice Chancellor at The University of Liverpool, a position he took up in August 2013, having formerly been Chief Operating Officer since November 2008. Prior to that he held the position of Director of Facilities Management.

An architect by profession, Patrick has a BArch from University College Dublin and has previously held senior leadership positions at The University of Reading and Royal Holloway, University of London. He has also been a consultant, advising higher education institutions across the UK on facilities management organisation and development and the delivery of major capital projects. Patrick

was a non-Executive Director of Aintree University Hospital NHS trust for six years until the end of March 2015.

Professor Michael Hengartner

President of University of Zurich; President of Swissuniversities



Professor Michael Hengartner is Professor of biochemistry and alumnus of Université Laval in Québec City. After his PhD at the Massachusetts Institute of Technology with Nobel laureate H. Robert Horvitz, he led a research group at the Cold Spring Harbor Laboratory, USA (1994 – 2001). In 2001, he was appointed professor of molecular biology at the Institute of Molecular Life Sciences at the University of Zurich. From 2009 to 2014, he was dean of the Faculty of Science. In 2014 he was appointed President of the University of Zurich.

Professor Simon Hix

Pro-Director (Research), London School of Economics and Political Science



Professor Simon Hix is one of the leading researchers, teachers, and commentators on European and comparative politics in the UK. He has published over 100 books and articles and has won several prestigious prizes

Delegates

and fellowships for his research, including from the US-UK Fulbright Commission, the American Political Science Association, and the UK Economic and Social Research Council. He is also a prize-winning teacher and continues to teach “Introduction to Political Science” to over 300 first-year undergraduate students.

Dr Joy Johnson
Vice President, Research and International, Simon Fraser University



Dr Joy Johnson leads Simon Fraser University’s strategic research initiatives and facilitates international opportunities that foster research collaborations and student exchange. Building on her long-standing leadership and research experience, she works with faculty, students and staff to secure research partnerships within the community and industry.

Johnson is a leader for SFU Innovates—a university-wide strategy to inspire, develop, and support impact-driven innovation and entrepreneurship. As part of SFU’s commitment to innovation, she is responsible for developing initiatives that support students and faculty members to harness new ideas and innovations for the benefit of society.

Professor Calvin Jones

Deputy Dean for Public Value and External Relations, Cardiff Business School, Cardiff University



Calvin Jones is a Professor of Economics and Deputy Dean at Cardiff Business School, where he helms the School’s unique Public Value strategy. He holds a PhD in the Economics of Tourism and Major Sports Events. Recent research has focused on future skills, energy and community led regeneration. He has been involved in the development of a number of measurement tools for sustainability, including the pilot Environmental Satellite Accounts for Wales and the Tourism Environmental Satellite Account for Wales.

His work has been widely published, and in several languages, and he is an expert invitee to the UN World Tourism Organisation’s Committee on Tourism Satellite Accounts and Economics of Tourism.

The Right Honourable Lord Kerslake



Crossbench Peer, House of Lords; Chair, The UPP Foundation Civic University Commission

Lord Kerslake is Chair of Peabody Group, London Collective Investment Vehicle

(London CIV), and the Centre for Public Scrutiny (CfPS). He is President of the Local Government Association, Chair of Be First, a regeneration company established by Barking and Dagenham Council, Chair of Sheffield Theatres and Chair of the Board of Governors for Sheffield Hallam University.

From mid-March 2018 until the launch of its final report in February 2019, Lord Kerslake chaired the UPP Foundation’s Civic University Commission, a major independent inquiry into the future of the civic university.

A former Head of the Civil Service, Lord Kerslake led the Department for Communities and Local Government (DCLG). Prior to this, he was the first Chief Executive of the Homes and Communities Agency. Before joining the Civil Service Lord Kerslake received a knighthood for his services to local government.

Sir Alan Langlands

Vice Chancellor, University of Leeds



Alan Langlands is Vice Chancellor of the University of Leeds. He was previously the Chief Executive of the Higher Education Funding Council for England, the Principal and Vice-Chancellor of the University of Dundee, Chief Executive of the NHS in England and Chair of UK Biobank. Alan was knighted in 1998 for his services to the NHS, he is a Fellow of the Royal Society of Edinburgh, and

an Honorary Fellow of the Academy of Medical Sciences. He also holds a number of Honorary Degrees from major universities and Fellowships from five Medical Royal Colleges.

Mark Leach

Founder, CEO and Editor in Chief of Wonkhe



Mark Leach is the founder, CEO and Editor in Chief of Wonkhe. Mark worked in policy, politics and public affairs in and around UK higher education and founded Wonkhe in 2011 while working as a jobbing policy wonk in the sector. The first part of his career took him to the National Union of Students, HEFCE, and University Alliance, GuildHE as well as a stint in politics as a special adviser to the former Shadow Minister for Universities & Science. Mark began full-time work on Wonkhe in mid-2014 growing it into a thriving business based in Central London. As CEO, Mark is responsible for running and developing Wonkhe and as Editor in Chief oversees Wonkhe’s editorial platforms.

Alison Lloyd

Director of International Affairs, Hong Kong Polytechnic University



As Director of International Affairs, Alison oversees the strategic development and coordination of international partnerships, international recruitment, mobility opportunities, and

institutional relations. As Director of Institutional Research and Planning, she steers strategic planning, performance monitoring, university rankings, business intelligence, and analytics.

Prior to joining The Hong Kong Polytechnic University, she was a Management Consultant in Deloitte and a boutique consulting practice in Hong Kong. Her previously consulting engagements cover strategy, business process review and improvement, performance management frameworks and change management for both private and public sector organizations in Hong Kong and Asia.

Alison is also co-chair of the University Social Responsibility Network. The USR Network is a forum in which to leaders in this agenda from around the world to exchange ideas, resources, practices of varied scope and scale to steer global discussion and development of USR in higher education.

Professor Graham Lord

Vice President and Dean of Faculty of Biology, Medicine and Health, The University of Manchester



Professor Graham Lord became Vice President and Dean of the Faculty of Biology, Medicine and Health in February 2019. He also holds the role of Executive Director of the Academic Health Science Centre as part of Health Innovation Manchester and represents the

University on the board of the Northern Health Science Alliance.

Graham qualified in medicine from the University of Cambridge in 1991 and undertook a period of general clinical training as a junior doctor in Cambridge, Hammersmith, Oxford and at the Royal Brompton Hospital. He was appointed as a Consultant in Nephrology and Transplantation at the Hammersmith in 2003. From 2003-2008, funded by an MRC Clinician Scientist award, he was a visiting scientist at Harvard University and then came back to the UK to become the Chair of Medicine at King’s College London. He led the successful application for the NIHR BRC at Guy’s and St Thomas’ and was appointed as Director of the Centre in 2012. He was elected as an NIHR Senior Investigator in 2013 and a Fellow of the Academy of Medical Sciences in 2016.

Dr Miranda Lou

Executive Vice President, Hong Kong Polytechnic University



Dr Miranda Lou has more than 20 years of strategic, business and functional management experience in the public and business sectors. At Hong Kong Polytechnic University, she is responsible for planning and leading institutional matters in connection with the administration and management of the University’s affairs and resources. The scope of responsibility covers finance, human resources, information technology, campus development and

Delegates

facilities management, knowledge transfer and entrepreneurship, subsidiaries management, communications and public affairs, alumni and institutional advancement, Chinese Mainland affairs as well as governance matters.

Miranda is also co-chair of the University Social Responsibility Network. The USR Network is a forum in which to leaders in this agenda from around the world to exchange ideas, resources, practices of varied scope and scale to steer global discussion and development of USR in higher education.

Professor Helen Marshall

Vice Chancellor,
University of Salford



Professor Helen Marshall has been Vice Chancellor at the University of Salford since April 2015. Helen has led the University through a significant strategic renewal, creating a 21st Century version of the institution's industrial heritage through the Industry Collaboration Zones (ICZ) Strategy. The ICZs offer a real-world approach to learning with a flexible, industry-informed and research-based curriculum co-created with industry.

Born in Cardiff, Helen has lived in the North West for a significant period of her career. Before moving to South Wales, Helen held senior positions at the University of Central Lancashire and the University of Cumbria.

Desmond McNulty

Assistant Vice Principal,
Economic Development
and Civic Engagement,
University of Glasgow



Desmond McNulty is Assistant Vice-Principal, Economic Development and Civic Engagement at the University of Glasgow. Des was appointed in 2016 as Vice Chair of the Glasgow Commission on Economic Growth, which provides strategic advice on economic development to the eight local authorities in the Glasgow City Region City Deal. He has written extensively about social inclusion, resilience, public service reform, poverty and inequality. Along with Policy Scotland colleagues he co-edited 'The Scottish Economy', a living book with a dedicated website: www.scottisheconomy.scot.

Professor Anthony Monaco

Chair of Talloires
Network, and President
of Tufts University



Anthony (Tony) Monaco became President of Tufts University in August 2011 and as President, has continued to advocate for Tufts' existing commitment to the mission of the Talloires Network. Prior to his appointment at Tufts, President Monaco served as Pro-Vice-Chancellor for Planning and Resources

at the University of Oxford. He was elected to the European Molecular Biology Organization (EMBO) in 2006, and is a Fellow of the Academy of Medical Sciences (UK) and the Royal Society of Medicine. President Monaco serves on the Boards of the Cummings Foundation, the Omidyar-Tufts Microfinance Fund, and the Tufts Medical Center

Tony chairs the Steering Committee of the Talloires Network, whose more than 350 member institutions around the world are committed to advancing civic engagement in higher education.

Professor Astri Muren

Deputy Vice President
and Dean of Social
Sciences, Stockholm University



Professor Astri Muren is Professor of Economics, Deputy Vice President of Human Sciences, and Dean of the Faculty of Social Sciences. Her research interests are in experimental and behavioral economics, particularly social preferences and gender, also industrial organization and regulation. Astri obtained her PhD in Economics from Princeton University, was Assistant Professor at Temple University, Philadelphia. She has been at Stockholm University since 1992. As Dean of the Faculty of Social Sciences, she is responsible for overseeing the strategic management of 20 departments including psychology, computer science, and education, in addition to the more traditional social science fields.

Dr Joanna Newman MBE

Chief Executive and
Secretary General of
the Association of Commonwealth
Universities (ACU)



Established in 1913, the ACU is the world's first and oldest international university network, with more than 500 member institutions in over 50 countries.

Prior to joining the ACU in April 2017, Joanna was Vice-Principal (International) at King's College London. Her previous positions include Director of the UK Higher Education International Unit (now known as Universities UK International) and Head of Higher Education at the British Library. Joanna remains a Senior Research Fellow in the Department of History at King's College London and an Honorary Research Fellow at the University of Southampton. She has also taught history at University College London and the University of Warwick. In 2014, Joanna was awarded an MBE in recognition of her work promoting British higher education internationally.

Eric S.P. Ng

Vice-President
(Administration) &
University Secretary,
Chinese University
of Hong Kong



Mr. Eric S.P. Ng is Vice-President (Administration) and University

Secretary. He is responsible for coordinating the delivery of the University's professional and administrative services in support of the core functions of teaching, research and knowledge transfer, and oversees a number of administrative units, including the Campus Development Office, Campus Planning and Sustainability Office, Communications and Public Relations Office, Estates Management Office, Finance Office, Human Resources Office, Internal Audit Office, and University Secretariat.

Mr. Ng began his career in university administration in 1989. He joined CUHK in 2007 after working in a number of universities in the UK and Hong Kong. He was appointed Registrar in 2008, became Registrar and Secretary in 2011, and took up the position of Vice-President (Administration) in April 2017 whilst retaining responsibilities for servicing the Council as University Secretary.

Mr. Ng has degrees in Mathematics, Philosophy and Theology from the University of Dundee and University of London.

Professor Jim Nyland

Associate Vice
Chancellor, Australian
Catholic University;
President, Engagement Australia



Professor Jim Nyland took up the role of Associate Vice-Chancellor

(Queensland) at the Australian Catholic University in October 2011. Previously, he held academic appointments at the University of Queensland, where he was the Director of Corporate Education and Director of UQ Business School Downtown. Prior to this he was Principal Advisor in the Pro Vice Chancellor's Office for Community Partnerships at Griffith University and has held managerial positions in a number of UK universities. Jim is President of Engagement Australia and a member of the International Consortium for Higher Education, Civic Responsibility and Democracy. He holds a doctorate in Education.

Professor Guy Orpen

Deputy Vice Chancellor,
New Campus
Development,
University of Bristol



Professor Orpen is Deputy Vice-Chancellor (New Campus Development) at the University of Bristol, a role he has held since January 2019. In this role he leads the development of the University's new campus which takes the University into the heart of the city and the city centre to the east of Brunel's iconic Temple Meads station. The Temple Quarter Enterprise Campus will focus on digital, business and social innovation, working across disciplines and with external partners to meet society's future needs.

Delegates

Guy previously served as Deputy Vice-Chancellor & Provost and chief academic officer, from 2014-19 and Pro Vice-Chancellor (Research and Enterprise) from 2009-14 and as Chair of the Board of the GW4 research alliance with Bath, Exeter and Cardiff Universities. He is a non-executive director of the University Hospitals Bristol Foundation Trust. He has chaired the UK National Composites Centre and the Board of Trustees of the Cambridge Crystallographic Data Centre. He has been a member of the Natural Environment Research Council, and Board of the Bristol Green Capital Partnership and the Bristol 2015 Company, which delivered the European Green Capital for Bristol in 2015. He has previously served as Dean of the Faculty of Science (2006-9) and Head of the School of Chemistry (2001-6) and as Professor of Structural Chemistry since 1994.

Tom Pearson
Head of Special Projects
(Academic Partnerships),
Imperial College London



Tom leads on civic engagement projects and collaborations at Imperial College London’s new White City Campus. His role includes managing the community engagement programme and the development of a pioneering community innovation and engagement space called The Invention Rooms. Tom has nearly a decade experience of managing projects and teams at Imperial. Previous positions include Head of Alumni Relations and Education Strategy Manager.

Dr Michelle Popowitz
Assistant Vice Chancellor
for Research, Co-Founder
and Executive Director of
UCLA Grand Challenges, UCLA



Dr Michelle Popowitz, JD, MPH has worked at UCLA since 2001, where she started with the School of Dentistry with a focus on administration and external relations. She was recruited to work for the Vice Chancellor for Research in 2011. Approximately 16 months later, she and former colleague, Jill Reddell (then Sweitzer), started a pilot program to catalyze team research on campus that blossomed into the campus-wide UCLA Grand Challenges initiative which now consists of two Grand Challenges. Michelle serves as an advisor to the leaders playing a more active role with strategy, campus reviews, university navigation, branding and activities designed to increase the public profile.

Michelle is frequently invited to talk about the experience at UCLA with Grand Challenges, as UCLA is the first campus to commit to solving a specific Grand Challenge goal. In 2017, she co-authored the Report on University-Led Grand Challenges and started a Community of Practice for universities working in this space—both efforts funded by a grant from the Schmidt Family Foundation. More recently she has been involved with an Association of Public Land-Grant Universities (APLU) effort related to Public Impact-Focused Research (which

includes Grand Challenges and other research efforts with a focus on public impact). While Grand Challenges keep her busy, Michelle was fortunate to find time to participate in the 2016 UC-CORO Systemwide Leadership Collaborative. Prior to joining UCLA in September 2001, Michelle worked as a transactional attorney and in hospital administration.

Professor Malcolm Press
Vice Chancellor,
Manchester Metropolitan
University




Professor Press is an ecologist with over 200 publications covering the impacts of climate and environmental change, tropical rain forest ecology, and subsistence farming in sub-Saharan Africa. He has studied plants and environments in a diverse range of ecosystems from the tropics to the high Arctic.

Malcolm is a trustee of WWF-UK and sits on the Board of the Institute of Apprenticeships. Previously, he has served as president of the British Ecological Society, a trustee of the Royal Botanic Gardens Kew, a council member of the National Trust, a council member of the Society of Biology, and as a deputy chair for a Research Excellence Framework panel.

Within Greater Manchester, Malcolm chairs the Memorials Advisory Group, established following the Manchester

Arena attack of 22 May 2017. Additionally, Malcolm sits on the boards of Health Innovation Manchester, Corridor Manchester, Manchester Science Partnerships, and the Manchester International Festival. He is also a member of the North West Business Leadership Team.

Tania Rhodes-Taylor
Vice Principal, External
Relations, The University
of Sydney



Tania Rhodes-Taylor joined The University of Sydney in February 2017 as Vice Principal, External Relations. In addition to overseeing the University’s engagement with industry and community, Tania has direct responsibility for the University’s Marketing and Communications, Museums and Cultural Engagement, Government Relations, Media, Events and Global Student Recruitment and Mobility.

Prior to joining The University of Sydney, Tania was Director of Marketing and Communications at Queen Mary University of London where she had overall responsibility for external relations and reputation development.

Tania has previously worked in the corporate and government sectors and began her career with Unisys, including a period working in Asia, before moving to work for government agencies and, since 2007, within the higher education sector.

Duncan Ross
Chief Data Officer,
Times Higher Education



As Chief Data Officer at *THE*, Duncan oversees a team that generates university rankings and related data products. Most recently he has launched the University Impact Ranking, a ground breaking approach to evaluating university performance based on the United Nations’ Sustainable Development Goals.

Prior to this, Duncan led Teradata’s data science team in Europe and Asia, where he was responsible for developing analytical solutions across a number of industries, including warranty and root-cause analysis in manufacturing and social network analysis in telecommunications.

Dr Amy Seakins
Engagement Manager,
Imperial College London



Dr Amy Seakins leads on the evaluation and impact assessment of Imperial’s societal engagement programme, as well as managing capacity building initiatives to enable the wider college community to be involved in engagement. Before joining Imperial Amy managed engagement funding at the Wellcome Trust and ran evaluation for large engagement programmes as a consultant. Amy holds a PhD in Public Engagement with Science, was part of the team who developed the concept

of Science Capital, and led research into public engagement impact within museums and the informal learning sector.

Professor Kevin Shakesheff
Pro Vice Chancellor for
the Faculty of Science,
University of Nottingham



In addition to his role as Pro Vice Chancellor, Kevin is Director of the UK Regenerative Medicine Platform Hub for Acellular Technologies. His independent scientific career began at the Massachusetts Institute of Technology under a NATO fellowship following a PhD and his qualification as a registered pharmacist. He returned to the UK as an EPSRC Advanced Fellow and became Professor of Tissue Engineering and Drug Delivery in 2001 at the University of Nottingham. In 2013 he became a Royal Society Wolfson Merit Award Holder. He was a Sub-Panel Member for the Research Excellence Framework (REF) for 2014. In 2011 he was made a Fellow of the Royal Pharmaceutical Society and in 2013 a Fellow of the Royal Society of Biologists. In 2014 he was selected as one of the 10 most inspirational scientists in the UK by the Engineering and Physical Sciences Research Council (RISE Leader Award). Kevin’s research involves the use of materials to control drug release and cell behaviour in 3D.

Delegates

Professor
Hanna Snellman

Vice Rector and Dean
of Faculty of Arts,
University of Helsinki



Professor Hanna Snellman is Dean of the Faculty of Arts and Professor of Folklore at the University of Helsinki. As Vice Rector, Snellman is responsible for internationalisation, partnerships and social interaction.

Hanna was Deputy Dean and then Dean of the Faculty of Arts up until 2018. She has formerly held positions as Professor of Ethnology at the University of Jyväskylä, Lakehead University, Canada; Professor of Finnish Language at University of Helsinki College, and is Academy Research Fellow.

Sudarshan Suchi

Secretary, Udayan
Centre for Collaborative
Learning and Reliance
Foundation



Sudarshan Suchi has over 25 years' experience of building community outreach programs and developing social capital for body corporates in India. His career to date has involved working with leading government and corporate organisations like the National Dairy Development Board; and Reliance Industries in India. Presently he plays

an advisory role to many Organisations for their CSR Strategies; NGO's for their program implementation and engaged with some of the leading Academic Institutions in India as visiting faculty and expert. He has developed substantial experience regarding community outreach strategies, and their impact on both micro and macro scales.

Professor
Nalin Thakker

Vice President for Social
Responsibility, The
University of Manchester



Professor Thakker was previously Associate Vice President for Risk, Compliance and Research Integrity before being recently appointed Vice President for Social Responsibility. Nalin is a clinical academic who has been associated with The University of Manchester for over 40 years. He undertook his undergraduate and postgraduate studies at the University. After serving as lecturer and senior lecturer, he was appointed to Chair of Molecular Pathology in 2003. He is also a Consultant Histopathologist at the Manchester University Hospital NHS Foundation Trust and leads a specialist head and neck histopathology service.

Nalin has previously served as the National Advisor to the Health Research Authority and as a National Research Ethics Advisor to the National Research Ethics Service. In 2015, he was appointed to serve as a Non-

Executive Director of the Health Research Authority by the Secretary of State for Health. Nalin has also previously served as an Interim Executive Board member of a primary school in Manchester and is currently on the Board of The Walton Centre NHS Trust on Merseyside. He was listed in the top 50 most influential BAME public sector leaders in the UK in 2017 by 'Inclusive Boards'.

Professor
Rocky Tuan

Vice Chancellor and
President, Chinese
University of Hong Kong



Professor Rocky Tuan is concurrently Lee Quo Wei and Lee Yick Hoi Lun Professor of Tissue Engineering and Regenerative Medicine at the University. Prior to joining CUHK in 2016 as a distinguished visiting professor and the founding director of the Institute for Tissue Engineering and Regenerative Medicine, he held several appointments at the University of Pittsburgh, including distinguished professor of orthopaedic surgery and director of the Center for Cellular and Molecular Engineering in the School of Medicine. He is also founding director of the Center for Military Medicine Research and Associate Director of the McGowan Institute for Regenerative Medicine.

Professor Tim
van der Hagen

President of Executive
Board and Rector
Magnificus, Delft
University of Technology



Professor Tim van der Hagen obtained his doctorate at TU Delft and he was appointed professor of Reactor Physics in 1999. He subsequently stayed on at the Reactor Institute Delft, which he led from 2005 to 2012. He became dean of the Faculty of Applied Sciences in 2010. He has extensive governance experience in the energy sector as a former member of the Dutch Energy Council, former member of the national Top Team on Energy, and as a former member of the Supervisory Board of the Energy research Centre of the Netherlands (ECN). He is a member of the National Advisory Council for Science, Technology and Innovation (AWTI).

Jessica
Weereratne

Senior Consultant,
Nous Group



Jessica is an effective and experience policy and communications adviser, with strengths in transformation and change, community engagement, digital strategy, open innovation, and complex stakeholder management.

She has worked extensively with the higher education sector, private sector, international governments, and non-for-profit organisations to identify and implement long-term strategies and change programmes. Jessica is passionate about building strong partnerships between organisations for the befit of society.

Dr Julie Wells

Vice President, Strategy
and Culture, The
University of Melbourne



As Vice President for Strategy and Culture at the University of Melbourne, Dr Julie Wells is responsible for a broad portfolio encompassing people, strategy and planning, policy, governance, government, civic, cultural and community engagement. She has led the development of two emerging innovation nodes anchored by the University: Melbourne Connect, and the new campus at Fishermans Bend. They support the University's strategy to augment research and teaching quality and impact through engagement with business, government and the broader community.

Julie has extensive experience in the tertiary education sector as a senior administrator, lobbyist, adviser and policy analyst. She has worked as a teacher, as an academic and in government. Julie also led the Policy and Research team in the national office of the National Tertiary Education Union from 1996 - 2002.

At RMIT University, Julie was Vice President (Governance and Planning), responsible for the delivery of integrated governance and planning services. She also held the position of University Secretary at RMIT and was a founding member of the Board of the Council for the Humanities and Social Sciences.

Julie holds a BA (Hons) Dip Ed from UWA and a PhD In Australian History from Monash University.

Professor
Andy Westwood

Vice Dean for Social
Responsibility,
Faculty of Humanities,
The University of Manchester



Andy Westwood is Professor of Government Practice and Vice Dean for Social Responsibility in the Faculty of Humanities at the University of Manchester. He is also a Visiting Professor of Further and Higher Education at the University of Wolverhampton and a Governor at the National Institute of Economic and Social Research. He is also an expert adviser to the EU and has worked regularly for the OECD and the IMF.

He has recently worked as a specialist adviser to the Select Committee on Economic Affairs in the House of Lords and also advised the Digital Skills Committee. He has also been a special adviser to ministers on education, skills

Delegates

and science policy at the Department for Innovation, Universities and Skills, and a senior adviser at HM Treasury and in the Departments for Education and Communities and Local Government. He writes regularly for Wonkhe, the Times Education Supplement, the Times Higher Education magazine and The Guardian.

Professor Graham Wilson

Director of Initiatives on Cities, Boston University



Professor Graham Wilson is the founding Director of Boston University's Initiative on Cities (IoC), created by Boston University's President, Dr. Robert Brown. The IoC links scholars across the entire university from the Medical School to the College of Fine Arts with practitioners in city governance. Recent conferences have focused on the housing affordability crisis and cities and children. IoC always has an international component to its work linking with scholars and practitioners around the globe. IoC also promotes research by BU faculty and graduate students on urban issues; it is best known for the only authoritative survey of the mayors of major US cities (see Surveofmayors.com)

Graham is a Professor of Political Science and previously taught at the University of Wisconsin Madison and the University of Essex, UK.

Dr Frank Zuijdam

Head Academic Affairs, University of Amsterdam



Dr Frank Zuijdam is Head of Academic Affairs of the University of Amsterdam. In this position he is responsible for the policy unit at the central level of the University of Amsterdam. The aim of the unit is policy development in teaching, research and valorisation. The unit supports the board of the University and the Rector.

Before joining the University of Amsterdam, Frank was working at the Technopolis Group, a firm with a focus on the evaluation of science, technology and innovation. At the Technopolis Group, Frank was involved in several projects on science and innovation policy in the Netherlands several other European countries (including the European Commission). Earlier he worked at the Netherlands Organisation for Scientific Research, NWO (the Dutch Research Council) in several positions.



Social responsibility

At The University of Manchester

Social responsibility is one of our University’s three core goals, as important as our commitment to world-leading research and outstanding teaching and learning. The priority we place on social responsibility makes us unique among British universities.

From our beginnings as England’s first civic University we’ve sought to break down boundaries and improve lives. We opened up education to the working classes and removed religious tests for entry in the 19th century.

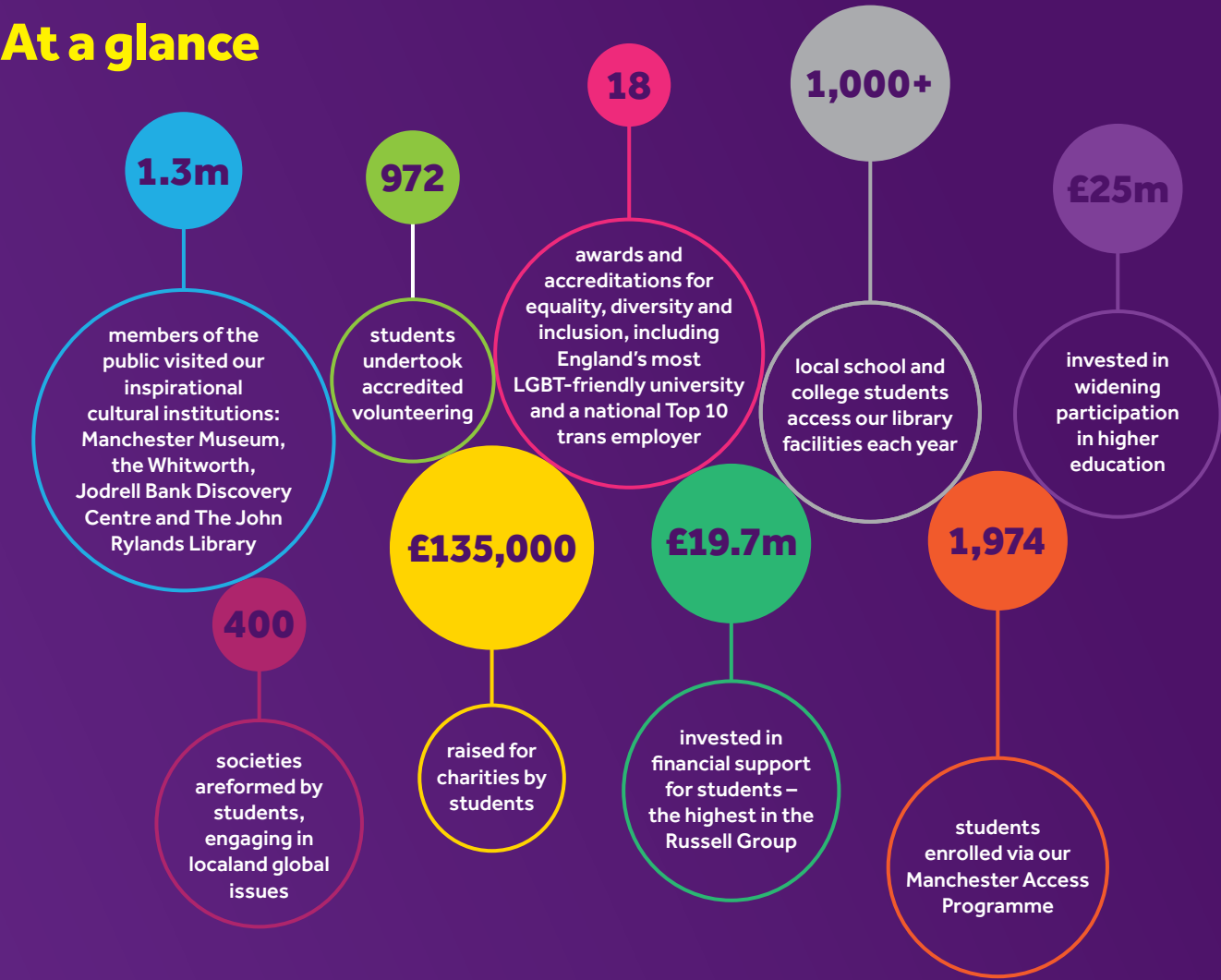
Christabel Pankhurst studied here before campaigning for the suffragettes. We employed Sir William Arthur Lewis, economics pioneer and the UK’s first black professor. And our first female academic, Marie Stopes, advocated birth control for women.

Now our research is tackling some of the world’s biggest challenges including health care, sustainability, and social inequalities. Through our unique Stellify initiative, our students are contributing to key ethical issues and supported to become the responsible leaders of tomorrow.

Our social and environmental impact is ranked best in Europe and third in the world by Times Higher Education, with our commitment to the United Nations Sustainable Development Goals (SDGs) showcased in our local, national and global work.

For more information on social responsibility at the University of Manchester, visit www.manchester.ac.uk/discover/social-responsibility

At a glance



Social responsibility awards and recognition: examples

- Gold Watermark for Public Engagement, National Co-ordinating Centre for Public Engagement
- 1st in Europe and 3rd in the world in the Times Higher Education University Impact Rankings national and global work.
- Top among English universities in Stonewall’s Workplace Equality Index
- Queen’s Award for Voluntary Service for the School Governor Initiative
- Times Higher Education Awards for the School Governor Initiative and The Works
- Guardian Sustainable Business Award for The Works
- Green Gown Award for 10,000 Actions and the Ethical Grand Challenges Sustainability Challenge
- Carbon Literacy Organisation Award

About Manchester

Manchester: the Original Modern City

Manchester is the major international and cosmopolitan city in the north of England, widely regarded as the central hub of the 'Northern Powerhouse'.

It is recognised as one of the most influential, modern and knowledge-based European cities for science, education, healthcare, business, leisure and, of course, sport; all reasons why media giants BBC

and ITV, together with major corporate businesses such as IBM, Cisco and Siemens all refer to us as home. From its humble beginnings as a Roman fort, Manchester became famous during the 19th century as the world's first industrialised city. It is also a city of worldfirst scientific and medical breakthroughs which undoubtedly have improved global cancer care; from Rutherford's splitting of the atom, the first stored-program computer and the first randomised cancer clinical trial, to the first test tube baby and most recently, the isolation of graphene, the world's thinnest and strongest material.

Getting to and from Manchester



Arrival by air

Manchester Airport is the global gateway to the North of England, and the largest UK airport outside of London.

The airport offers non-stop flights from over 200 destinations including almost every major European city in Europe, as well as global hubs in North America, the Middle East and Asia Pacific . The city centre is 15-20 minutes by train (c£5.00) or 20-25 minutes by taxi (c£25.00).



Arrival by train

With direct rail services from across the country, getting to Manchester by train couldn't be easier. Manchester Piccadilly is one of three main stations in Manchester and offers direct services to other major UK cities.



Arrival by car

In the city centre NCP has over 13,000 car parking spaces across 43 sites. They also offer a pre-book service in Manchester, so delegates can guarantee a car parking space before their journey begins. Manchester Aquatics Centre offers the most convenient location for car parking close to the summit.



Things to see and do in Manchester

Manchester is a thriving centre for culture, sport and music, offering entertainment for all tastes with numerous art galleries and museums, tourist attractions, and a sporting prowess that is recognised the world over. There is an abundance of things to do all within a short walk of the University.



The John Rylands Library



Manchester United FC, Old Trafford

Sport

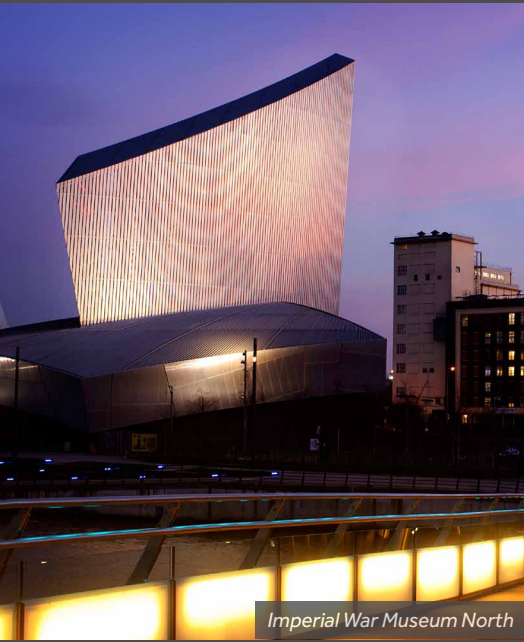
World-class sport is to be found in Manchester. It isn't all about football – with an extensive calendar of events and fixtures as well as top-quality facilities, there are bountiful opportunities to watch worldclass sport.

- Emirates Old Trafford
- Chill Factore
- Manchester City FC Stadium and Club Tour
- Manchester United FC Museum and Stadium Tour
- Manchester Velodrome

Theatre

Manchester has music in its soul. Mancunian exports including The Stone Roses, The Smiths, Take That, Bee Gees and Oasis have created world-famous music. Music, drama and creatively remain very much a part of the fabric of the city even today.

- The Lowry
- The Royal Exchange Theatre
- HOME
- The Palace Theatre
- The Opera House
- The Contact Theatre
- The Dancehouse



Imperial War Museum North

Museums and Galleries

Manchester is home to a huge choice of over 90 museums and galleries – most of which are free to enter. Some examples of these are below:

- Manchester Museum
- People's History Museum
- National Football Museum
- Imperial War Museum North
- Manchester Art Gallery
- The Lowry
- Whitworth Art Gallery
- Portico Library
- Manchester Transport Museum
- The Police Museum

Heritage

Manchester has a rich social and political history – from being the home of the industrial revolution to the birthplace of the suffragette movement – Manchester has some of the most important sites of historical importance.

- Chethams Library
- The John Rylands Library
- Manchester Cathedral
- Science and Industry Museum
- The Monastery
- Ordsall Hall
- East Lancashire Railway

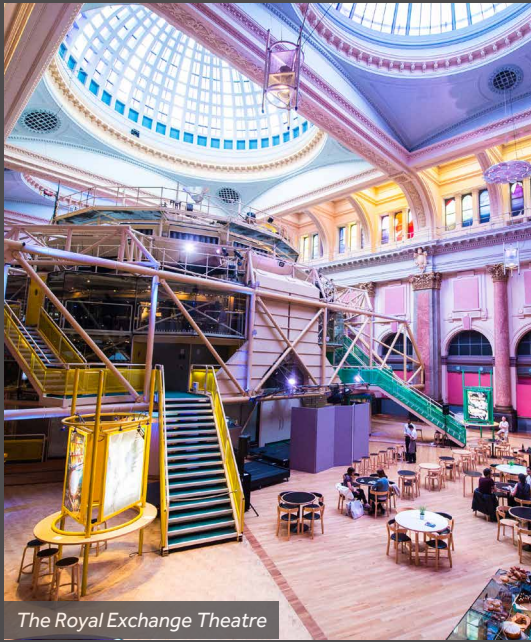
Shopping

Manchester offers an unrivalled selection of independent brands combined with the best collection of well known high street and department stores.

- Selfridges
- Harvey Nichols
- intuTrafford Centre
- Afflecks
- Barton Arcade
- Manchester Craft and Design Centre
- Manchester Arndale



Northern Quarter



The Royal Exchange Theatre

The University of Manchester
Oxford Road
Manchester M13 9PL
UK

✉ globalengagementsummit@manchester.ac.uk

www.manchester.ac.uk/gues19

🐦 @OfficialUoM



When you have finished with
this publication please recycle it