



Living at home/commuter students

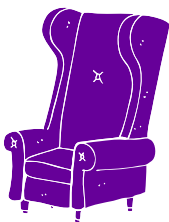
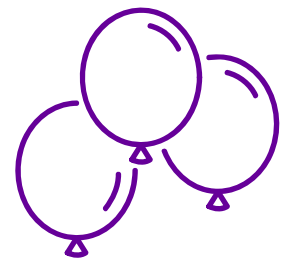
Support offered by the Students' Union

The University's Students' Union has developed a programme of support for commuter students to encourage them to fully participate in student life and make the most of their time at the University.



To help students socialise with one another the SU organises a **meet up** on the Thursday of Welcome Week which is specifically aimed at commuter students. The last couple of years the SU also organised a '**Living at home residential**' which gave commuter students the opportunity to live in Halls for a weekend before term starts.

If students have not already done so they should be encouraged to join the '**Living at home society**' which is part of the SU.



The SU provides a list **common rooms** and the facilities they provide (e.g. microwaves) to give commuter students a space to take an enjoyable break.

Furthermore, the SU offers advice on ways of transport as well as information on car parks near campus.

For further information visit their website at:

<https://manchesterstudentsunion.com/livingathome>