

# A Catalogue of Egyptian Human and Animal Mummified Remains

by  
A. ROSALIE DAVID

This catalogue of the Manchester Museum collection includes mummified human bodies (but excludes other skeletal remains and dry skulls), animal remains, and parts of human mummies from Egypt.

A future catalogue will give a detailed description of the coffins and cartonnage cases, including the religious scenes and texts, and this information is therefore omitted here.

Measurements given in the catalogue indicate the approximate length of the unwrapped bodies and the external dimensions of those which are wrapped in bandages, or enclosed in cartonnage cases or a reed cover.

## Human Mummies

### *Middle Kingdom*

Nos. 21470 and 21471 These two mummies were discovered together in an unopened tomb at Rifeh. The complete tomb-group is in Manchester Museum, and includes the two bodies, two wooden painted and inscribed rectangular coffins (belonging to Nekht-ankh, 4724a and b, and belonging to Khnum-nakht, 4725a and b), two wooden painted anthropoid coffins (Nekht-ankh, 4739, and Khnum-nakht, 4740), wooden painted and inscribed canopic chest belonging to Nekht-ankh (4726), four canopic jars of Nekht-ankh (4727–4730), pottery vase (4731), pottery bowl (4732), containing leaves and stalks (4733), female servant statuettes (4734 and 4738), wooden statuettes inscribed for Nekht-ankh (4735 and 4736) and for Khnum-nakht (4737), two model boats (4741 and 4742), bandages from both mummies (21472a and b), mummified tissue from Nekht-ankh, including brain, lung, liver, larynx, finger-nails, penis, aortic arch and pericardium and fragmentary tissue (21472c–j).

This group came from the excavation of Sir Flinders Petrie and was donated to the museum by the British School of Archaeology in Egypt. The mummies were unwrapped in 1907 by Dr Margaret Murray at Manchester University.<sup>1</sup> The coffin inscriptions indicate that the men shared a common mother, but their bodies display such physical differences that their relationship has been questioned.<sup>2</sup>

No. 21470 Mummy of an adult male, named Nekht-ankh, son of Aa-Khnum<sup>3</sup>

*Date:* XII Dynasty  
*Provenance:* Rifeh<sup>4</sup>  
*Length:* 161 cm  
*Date of acquisition:* 1906

When unwrapped, the bones were intact, although the body tissue had disintegrated. The dark brown facial

skin was partly preserved, the finger- and toe-nails were well-preserved and the dark brown hair was turning grey. Possibly eunuchoid, the estimated age at death of this man was about 60 years. Large numbers of beetles were present among the inner bandages. The internal and external organs were mummified and placed in two of his canopic jars. The skull is of the orthognathous or non-negroid type, although the body was found in the body coffin of which the face is painted black. Also, the skull shows a marked resemblance to the head of the wooden statuette inscribed with the name of Khnum-nakht (4737).

No. 21471 Mummy of an adult male, named Khnum-nakht, son of Aa-Khnum, great w'b-priest<sup>5</sup>

*Date:* XII Dynasty  
*Provenance:* Rifeh  
*Length:* 158 cm  
*Date of acquisition:* 1906

When unwrapped the body was in a very dry condition, and the soft tissues dissolved into fine powder. Very little skin tissue now remains. No special attention had been given to the preservation of the finger- and toe-nails, and the soft tissues and internal organs had been reduced to dark brown powder. No beetles were present among the bandages. The man was aged about 40 years at death. The mummy was less well-preserved than that of Nekht-ankh and had not been provided with canopic jars. The skull is of the prognathous or negroid type, although this body was found in the body coffin of which the face is painted yellowish-white. The skull also closely resembles the head of one of the wooden statuettes (4736) inscribed for Nekht-ankh.

### *New Kingdom*

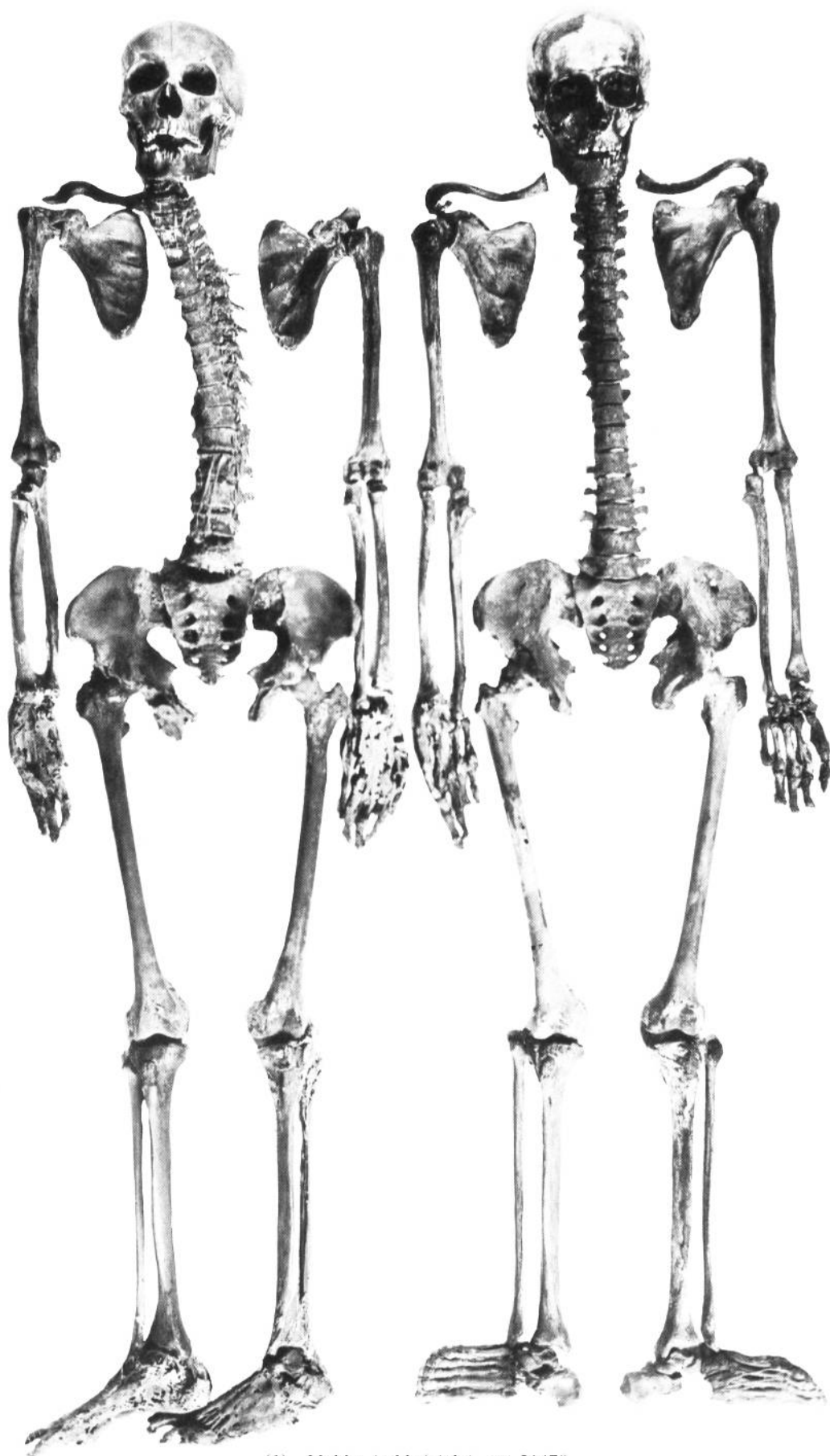
No. 3496 Mummy of a child, name unknown<sup>6</sup>

*Date:* XVIII Dynasty  
*Provenance:* Gurob  
*Length:* 85 cm  
*Date of acquisition:* 1904<sup>7</sup>

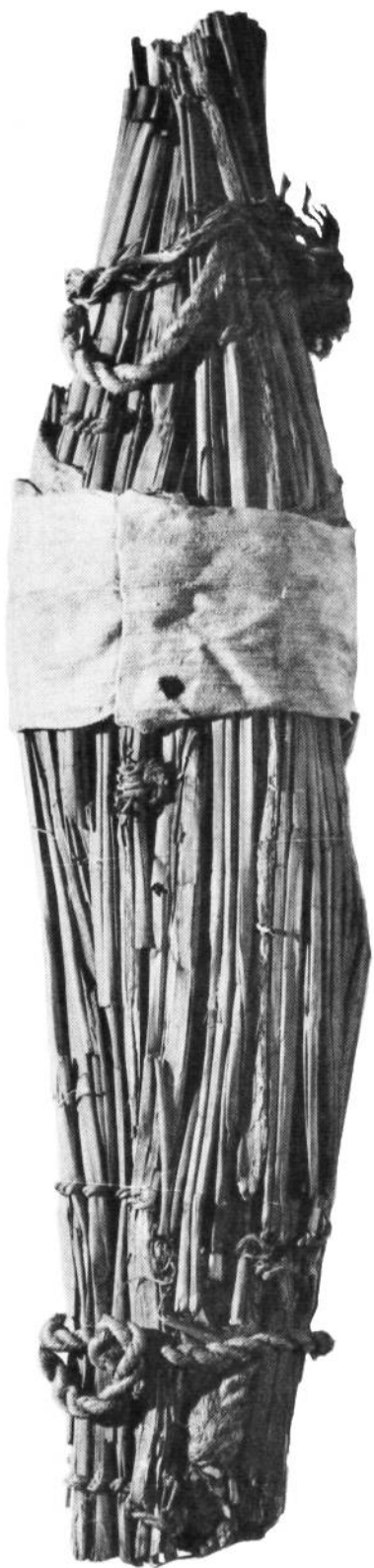
The body is wrapped in a reed mat, tied with ropes at either end.

No. 9354 Mummy of an adult male, in a wooden coffin, bearing the name Khary, Divine Father of Amun<sup>8</sup>

*Date:* XIX Dynasty  
*Provenance:* Unrecorded  
*Length:* 161 cm  
*Date of acquisition:* 1935<sup>9</sup>



(1) Nekht-Ankh (*right*), no. 21470  
(2) Khnum-Nakht (*left*), no. 21471



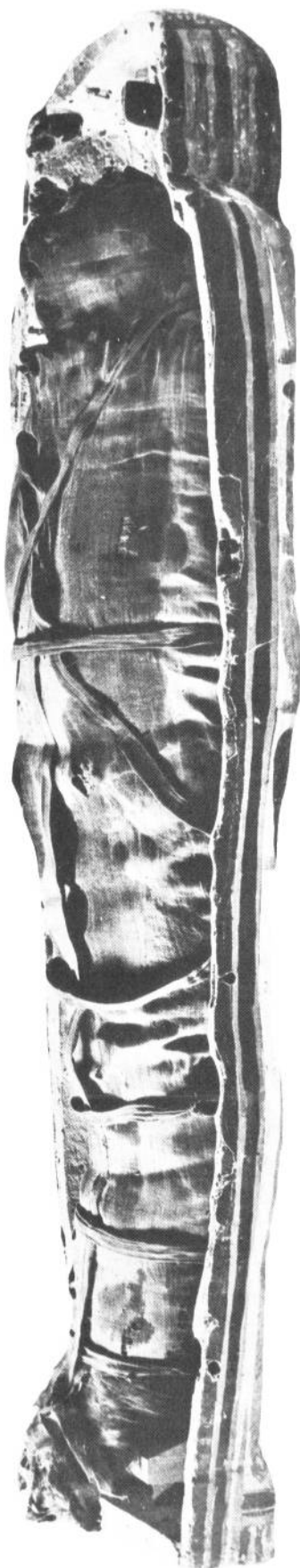
(3) No. 3496



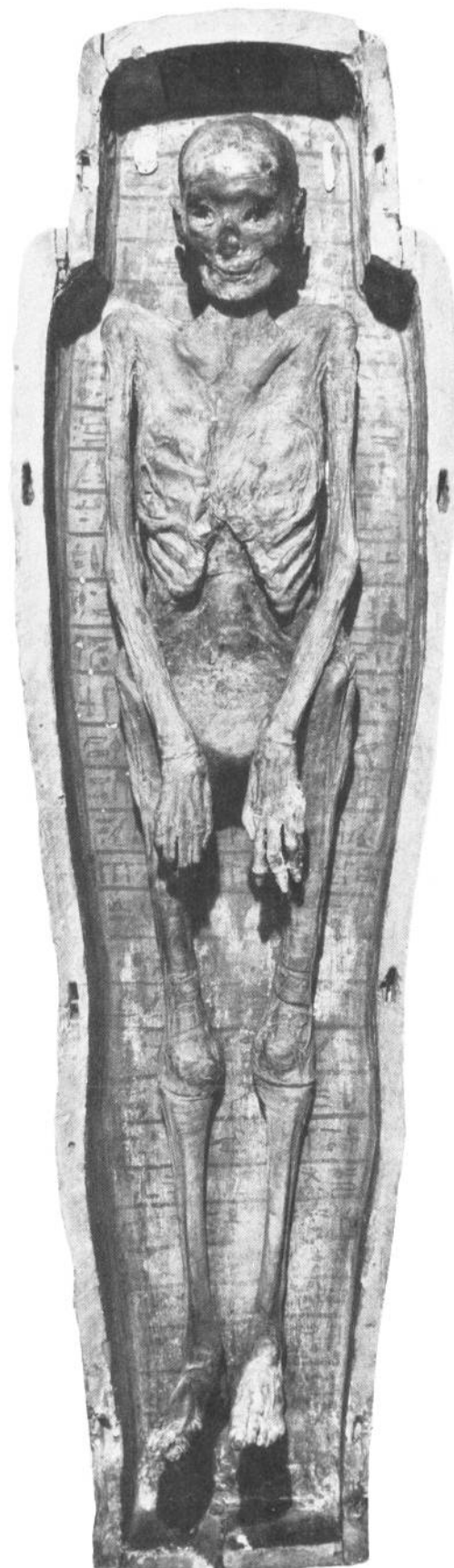
(4) No. 9354



(5) No. 1976 51a



(6) No. 10881



(7) No. 1777



The anthropoid coffin is decorated with painted scenes and inscriptions. The mummy had been partly unwrapped before entering the Museum collection. One fist is open and the other is clenched.

No. 1976.51a Mummy of an adult female in a wooden coffin, name unknown.<sup>10</sup>

*Date:* Probably XXV Dynasty  
*Provenance:* Unrecorded, but possibly Luxor<sup>11</sup>  
*Length:* 160 cm  
*Date of acquisition:* 1976<sup>12</sup>

The painted decoration on the anthropoid coffin is indistinct. The mummy had been unwrapped by its owner and was re-examined after arrival at the Museum in July 1976. The body is well-preserved, with fine facial features, and slender hands and feet. The embalmer's incision in the left side of the abdomen is visible.

#### *Late Period (XXI–XXV Dynasties)*

No. 10881 Mummy of an adult, possibly female, in a wooden coffin, bearing the name Ta-aath<sup>13</sup>

*Date:* XXI–XXV Dynasty  
*Provenance:* Unrecorded but possibly Luxor<sup>14</sup>  
*Length:* 160 cm  
*Date of acquisition:* 1948<sup>15</sup>

The anthropoid coffin is decorated with painted scenes and inscriptions. The mummy had been unwrapped and loosely re-wrapped before its acquisition by the Manchester Museum.<sup>16</sup>

The Curator of the Hastings Museum is said to have brought in authorities from the British Museum to examine the mummy.<sup>17</sup>

No. 1777 Mummy of an adult female, with two wooden coffins, bearing the name of Asru<sup>18</sup>

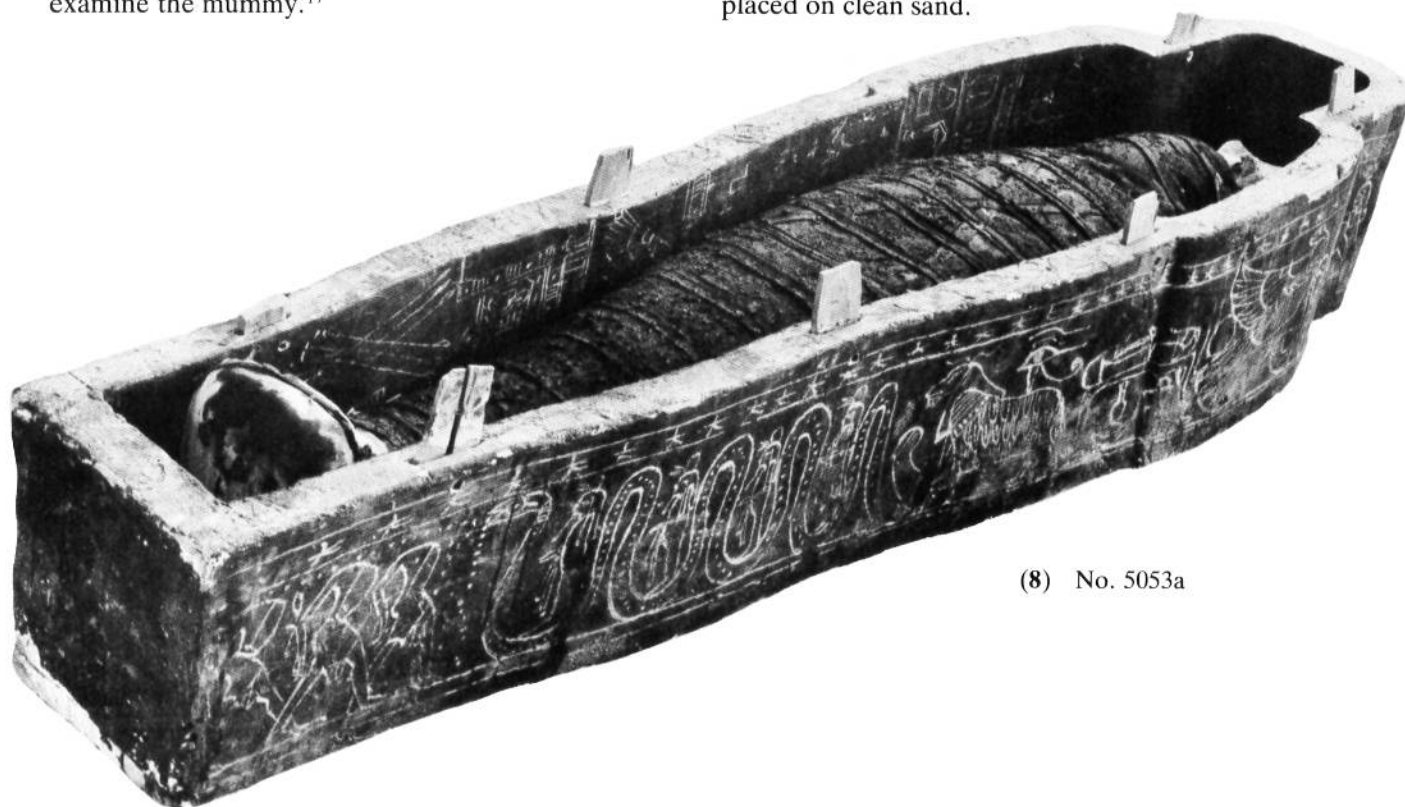
*Date:* Probably XXV Dynasty  
*Provenance:* Unrecorded, but possibly Luxor  
*Length:* 150 cm  
*Date of acquisition:* 1825<sup>19</sup>

The inner and outer anthropoid coffins are decorated with painted scenes and inscriptions. The mummy had been unwrapped before entering the Museum collection. It is well-preserved, with fine facial features; the arms and hands are outstretched and extend over the thighs. A package of mummified viscera was placed upon the thighs.

No. 5053a Mummy of an adult female, in a wooden coffin, bearing the name of Perenbast, Chantress of Amun.<sup>20</sup>

*Date:* XXV Dynasty  
*Provenance:* Qurneh<sup>21</sup>  
*Length:* 167 cm  
*Date of acquisition:* 1909<sup>22</sup>

The anthropoid coffin (5053c) is pitched and decorated with scenes and inscriptions painted in yellow; the eyes and eyebrows are inlaid with glass. Lotus flowers (Sacred Lotus flowers, *Nelumbo nucifera*) were placed in the coffin beneath the mummy. The body is bandaged and covered with a thin coat of pitch. Radiological examination has indicated the presence of amulets between the layers of bandages. Other equipment from this tomb in the Manchester collection includes wooden dowels to fasten the coffin (5053b), a statuette of Ptah-Sokar (5053d), a wooden box to contain ushabti-figures (5053e), another wooden box (5053f) and about 360 ushabti-figures from the above boxes (5053g), in which they were placed on clean sand.



(8) No. 5053a

# *The Graeco-Roman Period*

No. 1766 Mummy of an adult female, name unknown<sup>23</sup>

*Date:* Roman Period  
(1st/2nd century A.D.)

*Provenance:* Fayoum

*Length:* 166 cm

*Date of acquisition:* 1895–6<sup>24</sup>

A body enclosed in bandages coated in resin, painted with three horizontal registers of funerary scenes. There is a painted cartonnage cover of separate pieces for the head, breast and feet; the head, breast and feet are gilded and the sole of the foot cover is decorated with painted figures. Imitations of serpent-bracelets, rings, necklaces inlaid with glass to represent semi-precious stones, and a bunch of flowers held in the woman's hand decorate the cartonnage breast cover.

No. 1767 Mummy of an adult male, name unknown<sup>25</sup>

*Date:* Roman Period  
(1st/2nd century A.D.)

*Provenance:* Fayoum

*Length:* 161 cm

*Date of acquisition:* Possibly 1888–90<sup>26</sup>

A body enclosed in bandages coated in resin, painted with a red background on which a wsh-collar and five horizontal registers of funerary scenes are depicted. There is a portrait-panel over the face, showing a bearded man, which is encircled by a cartonnage head cover which extends over the breast and imitates a white cloak covering the head and bust. The hands are gilded, and the right one is shown holding the cloak while the left one holds a green loop. A cartonnage foot cover, with gilded toe-nails, protrudes from the bandages.

No. 1768 Mummy of an adolescent boy, name unknown<sup>27</sup>

*Date:* Roman Period (1st century B.C.)

*Provenance:* Hawara<sup>28</sup>

*Length:* 168 cm

*Date of acquisition:* 1888<sup>29</sup>

A body enclosed in elaborate diagonal bandaging, interspersed with gilded studs; a cartonnage piece covers the feet.<sup>30</sup> The fine portrait-panel over the face shows an adolescent boy wearing a laurel wreath.

No. 1769 Mummy of a child, sex uncertain, name unknown<sup>31</sup>

*Date:* Roman Period (2nd century A.D.)

*Provenance:* Hawara<sup>32</sup>

*Length:* 99 cm

*Date of acquisition:* 1888–90

A body enclosed in bandages, coated with resin, painted with three horizontal registers of funerary scenes on a pink background. There is a cartonnage cover of separate pieces for the head, breast and feet. The head, bust and feet are gilded, and on the bust there are imitations of serpent-bracelets and jewellery inlaid with glass to represent semi-precious stones. On the head piece, wavy hair is indicated and the eyes are inlaid.

No. 1770 Mummy of an adolescent, sex uncertain but probably female<sup>33</sup>

*Date:* Originally thought to be Ptolemaic, but see results of Carbon-14 dates, p. 146

*Provenance:* Unrecorded, but possibly Hawara<sup>34</sup>

*Length:* 132 cm

*Date of acquisition:* 1895–6<sup>35</sup>

This body was wrapped in reddish-brown bandages which were in a poor state of preservation. The head was enclosed in a cartonnage cover with a gilded face and inlaid eyes and eyebrows. When it was unwrapped at Manchester in June 1975,<sup>36</sup> a cartonnage breast cover, decorated soles, gilded nipple amulets, a prosthetic phallus, and gilded toe-nail and finger-nail covers were discovered.

No. 1775 Mummy of an adult male, named Artemidorous<sup>37</sup>

*Date:* Roman Period  
(early 2nd century A.D.)

*Provenance:* Hawara<sup>38</sup>

*Length:* 167 cm

*Date of acquisition:* 1888<sup>39</sup>

The body is enclosed in a cartonnage case, painted red with mythological scenes in gold leaf. A portrait-panel covers the face,<sup>40</sup> showing an elderly man wearing a laurel wreath; on the chest is the inscription 'O, Artemidorous, farewell'.

No. 2109 Mummy of a child, sex uncertain, name unknown<sup>41</sup>

*Date:* Roman Period

*Provenance:* Hawara

*Length:* 80 cm

*Date of acquisition:* 1888–90<sup>42</sup>

The body is enclosed in diagonal bandaging interspersed with gilded studs, and cartonnage pieces to cover the head and the feet. The face piece is gilded and gilded toes are visible protruding from the bandaging.

No. 9319 Mummy of a child, probably male, name unknown<sup>43</sup>

*Date:* Roman Period

*Provenance:* Hawara

*Length:* 90 cm

*Date of acquisition:* c.1933<sup>44</sup>

The body is enclosed in diagonal bandaging interspersed with gilded studs. The portrait-panel which originally covered the face was taken to the Boulaq Museum, Cairo.<sup>45</sup>

No. 20638 Mummy of an adult female, bearing the name Demetria, wife of Icaious<sup>46</sup>

*Date:* Roman Period (c.100 A.D.)

*Provenance:* Hawara<sup>47</sup>

*Length:* 159 cm

*Date of acquisition:* 1910–11<sup>48</sup>



(9) No. 20638



(10) No. 1767



(11) No. 1768



(12) No. 1769





(13) No. 1770



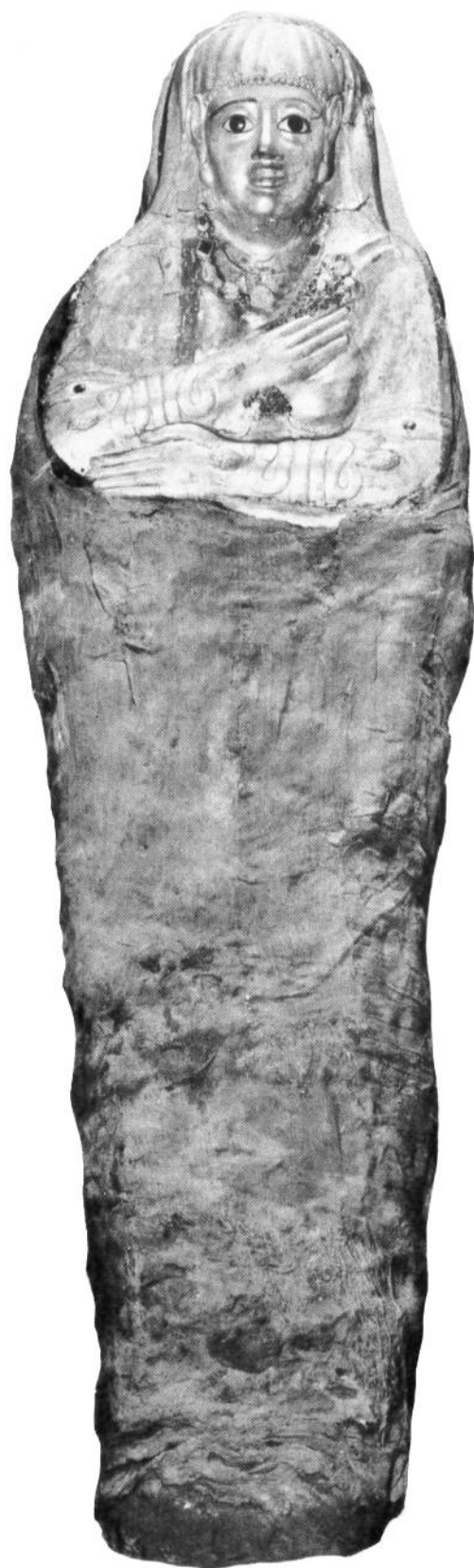
(14) No. 1775



(15) No. 2109



(16) No. 9319



(17) No. 1766

The body is enclosed in bandages coated in resin; cartonnage pieces cover the head, chest and feet. The resin-coated wrappings are painted red and decorated with four horizontal registers of deities; the face and chest covers are gilded, and the eyes are inlaid. Imitation jewellery is indicated on the chest cover; serpent-bracelets are shown, and the jewellery is inlaid with glass to represent semi-precious stones. The face piece has been repaired and restored. A Greek inscription on the headband gives the name of the deceased.

#### Mummified Human Parts

##### No. 5275 Head

*Date:* Unknown but said to be Ptolemaic(?) by G. Elliot Smith  
*Provenance:* Unrecorded  
*Height:* 21.5 cm  
*Date of acquisition:* Unrecorded, but donated by Miss Wroe of Manchester

The features are well-preserved; the hair, moustache and a few eyelashes are present.

##### No. 7740 Head

*Date:* Unknown  
*Provenance:* Unrecorded, but stated to be near Cairo  
*Height:* 21 cm  
*Date of acquisition:* 1925<sup>49</sup>

The upper part of the skull has been removed and is now attached by clips. The skull was opened by Mr Crabtree. The brain was extracted in antiquity, but the brain membrane is well-preserved.<sup>50</sup>

##### No. 21475 Head

*Date:* Unknown  
*Provenance:* Unrecorded  
*Height:* 23.5 cm  
*Date of acquisition:* Unrecorded. Found in the collection together with the mummified foot (no. 21474)

The head is in a poor state of preservation and areas of the skin tissue are worn away. The skin tissue is dark brown and some small pieces of bandage still adhere to it. The head is shaven, the eye sockets are plugged with packing, the nose is flattened, and the mouth is slightly open, revealing well-preserved teeth.

##### No. 22940 Head

*Date:* Unknown  
*Provenance:* Unrecorded  
*Height:* 23 cm  
*Date of acquisition:* Unrecorded

The mid-brown skin tissue is well-preserved, the head is shaven, the eyelids closed, the nose flattened and the imprint of the bandages is still visible on the skin.

No. 1765 Hand, right

*Date:* Unknown  
*Provenance:* Unrecorded  
*Length:* 20 cm  
*Date of acquisition:* Unrecorded

The yellowish skin-tissue still remains and the thumb, fingers and nails are all present.

No. 9384 Hand, left

*Date:* Unknown  
*Provenance:* Unrecorded  
*Length:* 13.5 cm  
*Date of acquisition:* 1936<sup>51</sup>

The hand is wrapped in bandages to which a few glazed beads are attached. The thumb and all the fingers are present.

No. 9428 Hand, right

*Date:* Unknown  
*Provenance:* Unrecorded  
*Length:* 14 cm  
*Date of acquisition:* 1936<sup>52</sup>

No bandages remain and the thumb is missing. This hand was rehydrated as part of the research undertaken by the Manchester Research Team in July 1976.

No. 1977.1154 Hand, left

*Date:* Unknown  
*Provenance:* Unrecorded  
*Length:* 19.5 cm  
*Date of acquisition:* 1977<sup>53</sup>

The skin tissue is dark brown, the fingers are complete and bandages still adhere to parts of the hand. Fragments of a blue faience ring remain embedded at the base of the second finger.

No. 1977.1155 Hand, right

*Date:* Unknown  
*Provenance:* Unrecorded  
*Length:* 17.4 cm  
*Date of acquisition:* 1977<sup>54</sup>

The skin tissue is dark brown. No bandages remain.

No. 1977.1156 Hand, right

*Date:* Unknown  
*Provenance:* Unrecorded  
*Length:* 11.5 cm  
*Date of acquisition:* 1977<sup>55</sup>

The hand is completely bandaged. The fingers are bent over, and the top phalange of each of the first three fingers is missing; one loose finger-tip is present.

No. 1977.1157 Hand

*Date:* Unknown  
*Provenance:* Unrecorded  
*Length:* Approx. 16.5 cm  
*Date of acquisition:* 1977<sup>56</sup>

The hand is in a poor state of preservation, and consists of a jumble of bones.

No. 1977.1158 Hand, right

*Date:* Unknown  
*Provenance:* Possibly Thebes  
*Length:* 17 cm  
*Date of acquisition:* 1977<sup>57</sup>

The hand is in a poor state of preservation.

No. 21476 Hand, left

*Date:* Unknown  
*Provenance:* Unrecorded, possibly Luxor  
*Length:* 18.5 cm  
*Date of acquisition:* 1905<sup>58</sup>

A well-formed hand, with darkened skin to which some pieces of bandage still adhere. All the fingers and the thumb are present, but the top phalanges of the fingers are missing.

No. 21474 Foot, right

*Date:* Unknown  
*Provenance:* Unrecorded  
*Length:* 20 cm  
*Date of acquisition:* Unrecorded. Found in the collection together with the mummified head (No. 21475)

The skin tissue is dark brown, and the toes and toe-nails are still present.

No. 21473 Mummified viscera from Asru (Mummy No. 1777)<sup>59</sup>

*Date:* Probably XXV Dynasty  
*Provenance:* Unrecorded, but probably Luxor  
*Date of acquisition:* 1825

A linen-wrapped package containing viscera, which was placed between the legs of the mummy.<sup>60</sup>

No. 21472a-j Bandages and viscera from the Two Brothers (Nekht-ankh and Khnum-nakht)<sup>61</sup>

*Date:* XII Dynasty  
*Provenance:* Rifeh  
*Date of acquisition:* 1906

No. 21472a Bandages from the mummy of Nekht-ankh.

No. 21472b Bandages from the mummy of Khnum-nakht.

The following organs are from Nekht-ankh:<sup>62</sup>

No. 21472c Brain

No. 21472d Lung tissue

No. 21472e Liver

No. 21472f Larynx

No. 21472g Finger-nails

No. 21472h Penis



No. 21472i Aortic arch and pericardium<sup>63</sup>

No. 21472j Mummified dust

### Mummified Animals

No. 563 Young mammal, possibly a puppy

*Date:* Probably XVIII–XIX Dynasty  
*Provenance:* Gurob  
*Height:* 32 cm  
*Date of acquisition:* 1906<sup>64</sup>

Wrapped in brown bandages.

No. 6293 Cat

*Date:* XXII Dynasty  
*Provenance:* Beni Hasan<sup>65</sup>  
*Height:* 34.5 cm  
*Date of acquisition:* June 1920<sup>66</sup>

The elaborate bandaging around the mummy is well-preserved, and forms concentric squares.

No. 6842 Young mammal, possibly a kitten, *Felis silvestris libyca*

*Date:* Unknown  
*Provenance:* Unrecorded  
*Height:* 31 cm  
*Date of acquisition:* August 1922<sup>67</sup>

Wrapped in brown bandages, and the ears are imitated in linen; the eyes are outlined in black on the bandaging, and other details are marked in black and red.

No. 9303 Kitten inside a wooden coffin, *Felis silvestris libyca*

*Date:* Late period  
*provenance:* Unrecorded  
*Height (with case):* 46 cm  
*Date of acquisition:* 1921<sup>68</sup>

The mummy is inside a case in the form of a cat, which is painted white, with the features carefully carved.

No. 1977.1162 Cat

*Date:* Unknown  
*Provenance:* Unrecorded  
*Height:* 37 cm  
*Date of acquisition:* 1977<sup>69</sup>

Wrapped in brown bandages.

No. 22947 Cat

*Date:* Late period  
*Provenance:* Unrecorded  
*Height:* 18 cm  
*Date of acquisition:* Unrecorded

Unwrapped; it has yellowish fur, the teeth and front paws are well-preserved, and part of the spinal column is separate from the body.

No. 11123 Head of a young cat, *Felis silvestris libyca*

*Date:* Unknown  
*Provenance:* Unrecorded  
*Height:* 8.5 cm  
*Date of Acquisition:* 1959<sup>70</sup>

No. 22948 Head of a cat, *Felis silvestris libyca*

*Date:* Possibly Middle Kingdom  
*Provenance:* Beni Hasan  
*Height:* 9.5 cm  
*Date of acquisition:* Unrecorded

Unwrapped; well-preserved teeth, ear flaps and whiskers; yellowish fur. An attached label reads 'Felis Maniculata A.45'.

No. 22949 Head of a cat, *Felis silvestris libyca*

*Date:* Possibly Middle Kingdom  
*Provenance:* Beni Hasan  
*Height:* 11.5 cm  
*Date of acquisition:* Unrecorded

Unwrapped; dark skin with traces of yellow fur; eyelashes are visible. An attached label reads 'Felis Maniculata A.44'.

No. 1772 Crocodile, *Crocodylus niloticus*

*Date:* Unknown  
*Provenance:* Unrecorded  
*Length:* 64.5 cm  
*Date of acquisition:* 1895–96<sup>71</sup>

Wrapped in brown bandages.

No. 3005 Crocodile, *Crocodylus niloticus*

*Date:* Roman Period  
*Provenance:* Hawara  
*Length:* 46.5 cm  
*Date of acquisition:* 1887–88<sup>72</sup>

Wrapped in brown bandages.

No. 7892 Crocodile — part of a crocodile, *Crocodylus niloticus*

*Date:* Possibly Roman Period  
*Provenance:* Unrecorded  
*Length:* 37 cm  
*Date of acquisition:* 1925<sup>73</sup>

Wrapped in bandages of dark and light brown linen, arranged in rectangular patterns.

No. 22941 Crocodile, *Crocodylus niloticus*

*Date:* Possibly Ptolemaic  
*Provenance:* Unrecorded  
*Length:* 64.5 cm  
*Date of acquisition:* Unrecorded

Wrapped in three sections of simple diagonal bandaging, separated by straight bandaging on top of the mummy. Two protuberances indicate the position of the eyes under the bandages. An attached label reads 'E.G.95'.

No. 22942 Crocodile, *Crocodylus niloticus*

*Date:* Late Period  
*Provenance:* Unrecorded  
*Length:* 19 cm  
*Date of acquisition:* Unrecorded

In a poor state of preservation, with the outer bandages loosened. An attached label reads 'E.G.7'.

No. 22943 Crocodile, *Crocodylus niloticus*

*Date:* Late Period  
*Provenance:* Unrecorded  
*Length:* 52.5 cm  
*Date of acquisition:* Unrecorded

Flattened, with a curved tail and wrapped in light brown bandages.

No. 5373a, b, c, d Four imitations of mummified crocodiles, made of reeds covered with cloth, containing a juvenile crocodile and 2 crushed eggs, *Crocodylus niloticus*

*Date:* Roman Period  
*Provenance:* Hawara<sup>74</sup>  
*Length:* a — 53 cm c — 30.5 cm  
b — 43 cm d — 23.5 cm  
*Date of acquisition:* 1910–11

No. 6035 Kestrel, *Falco tinnunculus*

*Date:* Unknown  
*Provenance:* Unrecorded; bought at Aswan  
*Height:* 24.5 cm  
*Date of acquisition:* Unrecorded<sup>75</sup>

No. 9371 Sparrowhawk, *accipiter nisus*

*Date:* Unknown  
*Provenance:* Unrecorded  
*Height:* 26.5 cm  
*Date of acquisition:* 1934<sup>76</sup>

No. 9248 Hawk

*Date:* Unknown  
*Provenance:* Unrecorded  
*Height:* 26.5 cm  
*Date of acquisition:* 1936<sup>77</sup>

No. 9429 Hawk

*Date:* Unknown  
*Provenance:* Unrecorded  
*Height:* 26 cm  
*Date of acquisition:* 1936<sup>77</sup>

No. 11293 Hawk

*Date:* Late Period  
*Provenance:* Unrecorded  
*Height:* 36.8 cm  
*Date of acquisition:* January 1959<sup>78</sup>

The mummy depicts Osiris; it is enclosed in bandages and has a gilded head-cover and breast-cover.

No. 11294 Kestrel, *Falco tinnunculus*

*Date:* Late Period  
*Provenance:* Unrecorded  
*Height:* 22 cm  
*Date of acquisition:* January 1959<sup>79</sup>

No. 11295 Hawk

*Date:* Possibly Ptolemaic Period  
*Provenance:* Unrecorded  
*Height:* 36.5 cm  
*Date of acquisition:* January 1959<sup>80</sup>

No. 22944 Hawk

*Date:* Late Period  
*Provenance:* Unrecorded  
*Height:* 26 cm  
*Date of acquisition:* Unrecorded

The dark brown outer bandages are still almost intact and the beak and an eye socket are visible.

No. 1971.21 Kestrel, *Falco tinnunculus*

*Date:* XXVI–XXX Dynasty  
*Provenance:* Sakkara<sup>81</sup>  
*Height:* 44.5 cm  
*Date of acquisition:* 1971<sup>82</sup>

Wrapped in bandages, with ornamental bandaging on the chest; there is painted decoration on the head in black and red; the beak and the right eye are missing.

No. 11296 Sacred Ibis, *Threskiornis aethiopica*

*Date:* Probably Ptolemaic Period  
*Provenance:* Unrecorded  
*Height:* 29 cm  
*Date of acquisition:* January 1959<sup>83</sup>

Wrapped in elaborate diagonal bandaging.

No. 11501 Sacred Ibis, *Threskiornis aethiopica*

*Date:* Late Period  
*Provenance:* Sakkara  
*Height:* 45 cm  
*Date of acquisition:* 1969<sup>84</sup>

Wrapped in elaborate diagonal bandaging, decorated with Thoth seated on a throne and surmounted by the Atef-crown.

No. 6098 Sacred Ibis, *Threskiornis aethiopica*

*Date:* Roman Period  
*Provenance:* Abydos, Ibis cemetery<sup>85</sup>  
*Height:* 66 cm  
*Date of acquisition:* 1913–14<sup>86</sup>

Wrapped in diagonal bandaging of dark and light brown linen; the head is modelled to represent Thoth, and the Atef-crown is supported behind the head.

No. 5923 Three fragments of bird bones, mummified

*Date:* Unknown  
*Provenance:* Unrecorded  
*Date of acquisition:* 1921<sup>87</sup>

No. 1195 Snake inside a wooden box, species unidentified

Date: XXVI Dynasty  
Provenance: Hibeh  
Length (of box): 14.8 cm  
Date of acquisition: 1903<sup>88</sup>

The lid of the wooden box is decorated with the carving of a snake.

No. 6032 Circular linen bundle containing a shrew, possibly *Crocidura flavescens olivieri* or *Suncus murinus*

Date: Unknown  
Provenance: Unrecorded; bought at Aswan  
Diameter: 8.1 cm  
Date of acquisition: Unrecorded<sup>89</sup>

No. 6033a, b Linen package containing a shrew, with another package attached to it, possibly *Crocidura flavescens olivieri* or *Suncus murinus*

Date: Unknown  
Provenance: Unrecorded; bought at Aswan  
Length: 12.3 cm  
Date of acquisition: Unrecorded<sup>90</sup>

A long oval package; the smaller, similar package is empty.

No. 6034 Linen package

Date: Unknown  
Provenance: Unrecorded; bought at Aswan  
Length: 18.7 cm  
Date of acquisition: Unrecorded<sup>91</sup>

No. 22945 Package containing a mummified animal, identified as a kitten, *Felis silvestris libyca*

Date: Late Period  
Provenance: Unrecorded  
Length: 23.7 cm  
Date of acquisition: Unrecorded

An attached label reads 'E.G.9'.

No. 22946 Package containing a mummified mammal, not identified

Date: Unknown  
Provenance: Unrecorded  
Length: 17 cm  
Date of acquisition: Unrecorded

An attached label reads 'E.G.8'.

Not all the animal mummies have been examined and identified at the time of publication, but will be discussed in a forthcoming article.

## Bibliography

W. R. Dawson and P. H. K. Gray, *Catalogue of the Human Remains in the Department of Egyptian Antiquities, British Museum, London* (London, 1968).

G. Elliott Smith, *The Royal Mummies* (Catalogue général des antiquités Égyptiennes du Musée du Caire. Cairo, 1912).

C. C. Edgar, *Graeco-Egyptian coffins, masks and portraits* (Catalogue général des antiquités Égyptiennes du Musée du Caire. Cairo, 1905).

Cl. Gaillard and G. Daressy, *La Faune Momifiée de l'Antique Égypte* (Catalogue général des antiquités Égyptiennes du Musée du Caire. Cairo, 1905).

R. Engelbach and D. E. Derry, 'Mummification' in *Annales du Service des Antiquités de l'Égypte*, 41 (1942), 233–65.

A. S. Griffiths, *A Catalogue of Egyptian antiquities of the XII and XVIII Dynasties from Kahun, Illahun and Gurob* (Manchester, 1910).

*Catalogue of the Robinow Collection of Egyptian Antiquities deposited at the Manchester Museum in 1896.*

P. H. K. Gray, *Radiological Aspects of the mummies of the ancient Egyptians in the Rijksmuseum van Oudheden, Leiden* (Oudheidkundige mededelingen uit het Rijksmuseum van Oudheden, Leiden 47, Leiden, 1966).

W. Hayes, *The Scepter of Egypt*, 1 (New York, 1953).

A. Lucas, *Ancient Egyptian materials and industries* (4th edition, London, 1962).

M. A. Murray, *The Tomb of the Two Brothers* (Manchester, 1910).

T. E. Peet and W. L. S. Loat, *Cemeteries of Abydos III* (London, 1913).

W. M. F. Petrie, *Gizeh and Rifeh* (London, 1907).

—, *Hawara, Biahmu and Arsinoe* (London, 1889).

—, *Qurneh* (London, 1909).

—, *Roman Portraits and Memphis IV* (London, 1911).

Clare Sheridan, *Nuda Veritas* (Thornton Butterworth Ltd, 1927).

A. F. Shore, *Portrait Painting from Roman Egypt* (British Museum, London, 1962).

G. Elliot Smith, 'Egyptian Mummies', in *Journal of Egyptian Archaeology* (1914), Vol. 1, 192.

— and W. R. Dawson, *Egyptian Mummies* (London, 1924).

—, 'A contribution to the study of mummification in Egypt, with special reference to the measures adopted during the time of the Twenty-first Dynasty for moulding the form of the body', in *Mémoires présentés à l'Institut Égyptien*, Vol. v, fasc. 1 (Cairo, 1906), 1–53 and pls. 1–19.

## Notes

<sup>1</sup> M. A. Murray, *The Tomb of the Two Brothers*; G. Elliot Smith and W. R. Dawson, *Egyptian Mummies*, pp. 82–83.

<sup>2</sup> See Conclusion, p. 160.

<sup>3</sup> Pl. 1. Since the bodies of Khnum-nakht and Nekht-anekh are now dismembered, the photographs used here date to the unwrapping in 1907.

<sup>4</sup> W. M. F. Petrie, *Gizeh and Rifeh*, pp. 12, 27, Pls. Xa–Xe.

<sup>5</sup> Pl. 2.

<sup>6</sup> Pl. 3.

<sup>7</sup> Through the Egyptian Research Account.

<sup>8</sup> Pl. 4.

- <sup>9</sup> Donated by Lt-Colonel Magnus of Cheadle, Cheshire. The mummy had been brought to England in December 1893.
- <sup>10</sup> Pl. 5.
- <sup>11</sup> The mummy was acquired from a London dealer, who gave Luxor as its provenance.
- <sup>12</sup> The mummy is on loan to the museum from Colonel C. J. H. Parr.
- <sup>13</sup> Pl. 6.
- <sup>14</sup> The mummy was brought to England by John Frewen Esq. of Brickwall House, Northiam, Nr Rye, Sussex, who made a journey to the Crimea and Egypt. It was believed that he had acquired the mummy at Luxor. Clare Sheridan in *Nuda Veritas*, gives an account of this.
- <sup>15</sup> The mummy remained at Brickwall House for many years. It was suspected of bringing ill fortune to the family, and when the house became a school in 1926, it was placed on loan at the Hastings Museum. In 1947, the Hastings Museum wished to concentrate on displaying local history, and Mrs Frewen gave the Curator permission to find alternative accommodation for the mummy. It was subsequently offered to the Manchester Museum.
- <sup>16</sup> An accompanying set of glass slides dating to May 1907 show the coffin and the body before and after unwrapping.
- <sup>17</sup> From an extract taken from a notebook in the family archives, written by Louisa Frewen (1925). The authorities are said to have stated that the mummy was female, that she had 'lived and died in the time of the prophet Jeremiah, had been a member of a middle-class family, and had died of arthritis'.
- <sup>18</sup> Pl. 7.
- <sup>19</sup> This mummy was received from E. and W. Garratt, and was the earliest Egyptian antiquity of importance in the museum collection.
- <sup>20</sup> Pl. 8.
- <sup>21</sup> W. M. F. Petrie, *Qurneh*, p. 15 and Pls. LII, LIII. Found together with a mummy of an adult male in an unopened courtyard tomb.
- <sup>22</sup> Donated by the British School of Archaeology in Egypt.
- <sup>23</sup> Pl. 17.
- <sup>24</sup> From the collection of M. E. Robinow.
- <sup>25</sup> Pl. 10.
- <sup>26</sup> Donated by Dr Jesse Haworth.
- <sup>27</sup> Pl. 11.
- <sup>28</sup> W. M. F. Petrie, *Hawara, Biahmu and Arsinoe*, frontispiece 4, and p. 43.
- <sup>29</sup> Donated by Dr Jesse Haworth.
- <sup>30</sup> Cf. *Catalogue of Egyptian Antiquities in the British Museum: Mummies and Human Remains*, No. 59 (13595), pp. 31–32, and Pl. XVIa. An adolescent boy, name unknown, from Hawara.
- <sup>31</sup> Pl. 12.
- <sup>32</sup> W. M. F. Petrie, *Hawara, Biahmu and Arsinoe*, p. 17. Found together with mummies of a woman and two other children, a boy and a girl. The girl has a gilded bust-piece and the boy and the mother have portrait-panels. The boy is in the British Museum collection (no. 21809) (see B.M. Catalogue, No. 60, p. 32 and Pl. XVIb). According to Petrie, op. cit., the group could probably be dated to c. A.D. 130–140, and provides an example of one grave containing two overlapping styles — the gilded cartonnage bust and the portrait-panel. A comparison is also provided by No. 67 in the B.M. Catalogue (22108), p. 25 and Pl. XVIIIa, which is a child mummy from Hawara with a gilded cartonnage case.
- <sup>33</sup> Pl. 13.
- <sup>34</sup> Examination of the archives at University College London and the correspondence between Sir Flinders Petrie and the Manchester Museum suggests that this mummy may have come from Petrie's excavation at Hawara.
- <sup>35</sup> From the M. E. Robinow collection.
- <sup>36</sup> See p. 83 ff.
- <sup>37</sup> Pl. 14.
- <sup>38</sup> W. M. F. Petrie, *Hawara, Biahmu and Arsinoe*, p. 18. Discovered in a brick-lined chamber together with two others similarly decorated, belonging to a younger Artemidoros (British Museum collection No. 21810), see B.M. Catalogue, No. 66, p. 35 and Pl. XVIIId); also W. M. F. Petrie, op. cit., p. 18, W. M. F. Petrie, *Seventy Years in Archaeology*, p. 84, and A. F. Shore, *Portrait Painting from Roman Egypt*, p. 26 and Pl. I) and a woman named Thermoutharin (see Catalogue général des antiquités Égyptiennes du Musée du Caire, C. C. Edgar, *Graeco-Egyptian coffins, masks and portraits*, No. 33221, pp. 81–82 and Pl. XXXII. 0).
- <sup>39</sup> From the Committee of Ancoats Art Museum, Manchester, from the Jesse Haworth collection, 1887–88.
- <sup>40</sup> One of the earliest known portrait-panels.
- <sup>41</sup> Pl. 15.
- <sup>42</sup> Donated by Dr Jesse Haworth.
- <sup>43</sup> Pl. 16.
- <sup>44</sup> Donated by Dr Jesse Haworth.
- <sup>45</sup> Possibly to be identified in the Catalogue général des antiquités Égyptiennes du Musée du Caire, *Graeco-Egyptian Coffins, Masks and Portraits*, as No. 33240, p. 93 and Pl. XXXVII.
- <sup>46</sup> Pl. 9.
- <sup>47</sup> W. M. F. Petrie, *Roman Portraits and Memphis IV*, pp. 9, 15 and Pl. XIII, 5.
- <sup>48</sup> From Sir Flinders Petrie's excavation. Donated by the British School of Archaeology in Egypt.
- <sup>49</sup> Donated by H. Victor Crabtree.
- <sup>50</sup> See p. 35.
- <sup>51</sup> From the Whitworth Art Gallery, Manchester. Said to have been purchased from an attendant at a museum in Munich.
- <sup>52</sup> From Mrs C. Thomas.
- <sup>53</sup> From the National Museum of Wales, Cardiff.
- <sup>54</sup> From the National Museum of Wales, Cardiff.
- <sup>55</sup> From the National Museum of Wales, Cardiff.
- <sup>56</sup> From the National Museum of Wales, Cardiff. Given to the Museum in 1888 by A. E. G. Knight of Tre-groes, Pencoed, Bridgend.
- <sup>57</sup> From the National Museum of Wales, Cardiff. Given to the Museum by Mrs Henry Lewis of Ty-nant.
- <sup>58</sup> Presented by 'H.B.M.' Found with a label stating that the hand was taken from the 'tombs at Luxor'.
- <sup>59</sup> See p. 99.
- <sup>60</sup> For further details of the investigation, see p. 99.
- <sup>61</sup> See p. 97.
- <sup>62</sup> Nos. 21472c–i were found in the Amset-headed and Hapy-headed canopic jars belonging to Nekht-anhk; the other two jars in the set were empty.
- <sup>63</sup> For full details of Nos. 21472a–i, see M. A. Murray, *The Tomb of the Two Brothers*.
- <sup>64</sup> From Sir Flinders Petrie's excavation. See A. S. Griffith, *A Catalogue of Egyptian antiquities of the XII and XVIII Dynasties from Kahun, Illahun and Gurob* (Manchester Museum 1910), p. 52. Collection of Jesse Haworth.
- <sup>65</sup> From Professor Garstang's excavation.
- <sup>66</sup> Bought from the Liverpool Institute of Archaeology.
- <sup>67</sup> Donated by Mrs Robinow.
- <sup>68</sup> Donated by T. A. Coward.
- <sup>69</sup> From the National Museum of Wales, Cardiff. An attached label states 'March 1898' which may be the date of acquisition.
- <sup>70</sup> From the Robinow Collection (*Catalogue of the Robinow Collection of Egyptian Antiquities deposited at the Manchester Museum in 1896*, No. 68).



- <sup>71</sup> Donated by M. E. Robinow.
- <sup>72</sup> Donated by Jesse Haworth.
- <sup>73</sup> Donated by W. Sharp Ogden.
- <sup>74</sup> W. M. F. Petrie, *Hawara, Biahmu and Arsinoe*, p. 10.
- <sup>75</sup> Donated by J. and A. Williams.
- <sup>76</sup> Purchased by the Museum.
- <sup>77</sup> Donated by Mrs E. Thomas.
- <sup>78</sup> From the Robinow Collection, op. cit., No. 71.
- <sup>79</sup> From the Robinow Collection, op. cit., No. 70.
- <sup>80</sup> From the Robinow Collection, op. cit., No. 69.
- <sup>81</sup> From the Egypt Exploration Society excavations at North Sakkara, seasons 1968/9, 1969/70. Excavation number: H5-2587; inventory number: 4864.
- <sup>82</sup> From the above excavation, via the British Museum, London.
- <sup>83</sup> From the Robinow collection, op. cit., No. 67.
- <sup>84</sup> From the Egypt Exploration Society, via the British Museum, excavation seasons 1966/7, cf. *Journal of Egyptian Archaeology*, 53 (1967), p. 141 ff.
- <sup>85</sup> See Peet and Loat, *Cemeteries of Abydos*, III, 40, 46; Pl. XX, 6; for type of bandaging, Pl. XXI, G.
- <sup>86</sup> From the Egypt Exploration Fund.
- <sup>87</sup> Donated by T. A. Coward.
- <sup>88</sup> From the Egypt Exploration Fund.
- <sup>89</sup> Donated by J. and A. Williams.
- <sup>90</sup> Donated by J. and A. Williams.
- <sup>91</sup> Donated by J. and A. Williams.

