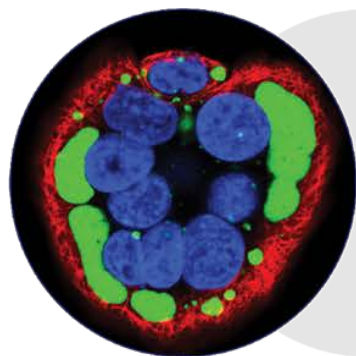


## UKRI GCRF Collective Programme: AHRC Led Call Mechanisms



**Thomas Booker, Strategy and Development Manager**

**AHRC UKRI**

**22<sup>nd</sup> February 2019, The University of Sheffield**

# UKRI GCRF Collective Programme

---

- A series of calls designed to enhance the overall impact across the six strategic GCRF Challenge portfolios:
  - Global Health
  - Food Systems
  - Security (Protracted Conflict, Refugee Crises and Forced Displacement)
  - Education
  - Resilience to Environmental Shocks and Change
  - Cities and Sustainable Infrastructure
- The programme is an interdisciplinary programme delivered by UKRI and steered by the GCRF Challenge Leaders.
- Calls launching between January and June 2019.

# UKRI GCRF Collective Programme

---

## **Cities and Sustainable Infrastructure**

- GCRF (Re)thinking the off-grid city
- GCRF Sustainable energy and international development: beyond technology

## **Education**

- GCRF Education as a driver of sustainable development
- GCRF Education in conflict and crisis research
- GCRF Education Interventions for Early Childhood Development

## **Food Systems**

- GCRF Cultures, behaviours and histories of agriculture, food, and nutrition
- GCRF A combined Food Systems approach to developing interventions to address the Double Burden of Malnutrition

# UKRI GCRF Collective Programme

---

## **Global Health**

- GCRF Health and Context

## **Resilience to Environmental Shocks and Change**

- GCRF Equitable Resilience: ensuring resilience enhances the Sustainable Development Goals
- GCRF Multiple and systemic Risks

## **Security (Protracted Conflict, Refugee Crises and Forced Displacement)**

- GCRF Development-based approaches to Protracted Displacement
- GCRF Preventing Conflict, Building Sustainable and Inclusive Peace
- GCRF Protection in Contexts of Conflict and Displacement

# UKRI GCRF Collective Programme

---

## **Calls that cut across the portfolios**

- GCRF Coherence Grants
- GCRF Gender and Intersectionality Network Plus
- GCRF Global Engagement Networks

## **Security (Protracted Conflict, Refugee Crises and Forced Displacement):**

- Preventing Conflict, Building Sustainable and Inclusive Peace (N+)
- Protection in Contexts of Conflict and Displacement (N+)

## **Education:**

- Education in Conflict and Crisis Research (N+)

## **Food Systems:**

- Cultures, behaviours and histories of agriculture, food, and nutrition  
(Partnership Building)

# Call Mechanism: Network Plus

---

## Overview

- Funding of up to £2m and up to 4 years duration per award
- Large, challenge-led awards
- Internationally collaborative and interdisciplinary in nature
- Flexible mechanism - funding allocated to the lead UK RO to support a cross-institutional leadership team and international and non-academic partners to undertake 3 interconnected strands of work
- Can include International Co-Investigators
- Must be ODA compliant

# Call Mechanism: Network Plus

---

## Expectations

- Promote collaboration, bringing together research expertise in development challenges in the UK & internationally
- Enable more integrated, cross-cutting approaches which can explore the intersections and interconnections between development challenges
- Build sustainable research partnerships placing stakeholders in partner countries at the heart of the research being undertaken
- Build capacity for research communities, in the UK and DAC-listed countries, to engage with and lead future interdisciplinary international development research



# Call Mechanism: Network Plus

---

The Network Plus model supports 3 interconnected strands of work:

1. Scoping, research leadership & partnership development activities.
1. Funding calls for innovative projects / activities
1. Coordination, networking and synthesis of research funded as part of the Network Plus

# Preventing Conflict, Building Sustainable and Inclusive Peace

---

**Purpose:** to strengthen the evidence base for effective and contextually sensitive policies and programmes that promote conflict prevention, and enhance positive peacebuilding

- Focus on prevention approaches that address long term drivers of conflict and instability in Fragile and Conflict Affected Situations (FCAS).
- A key feature will be to explore the interactions and inter-connections between key factors in the development and dynamics of conflict which cut across the GCRF portfolios - such as urban exclusion, health inequalities, unemployment, food insecurity, environmental stresses, low literacy levels and gender inequality.

Possible research themes expected include:

- Integrated risk assessment, including understanding the drivers of conflict, and risk based approaches to prevention
- People and community centred approaches and building societal prevention capabilities
- Addressing grievances, access to justice and innovative approaches to mediation
- Tackling horizontal inequalities as a part of prevention and peace building

# Protection in Contexts of Conflict and Displacement

---

**Purpose:** to support the building of an evidence base on humanitarian protection of people affected by conflict, with an emphasis on the protection of the most vulnerable.

Possible research themes expected include:

- exploring the social, political, economic and cultural factors that are conducive to restraint from violence amongst different actors
- understanding impact of local protection mechanisms and the opportunities and challenges faced by affected communities in times of armed conflict
- impact of legal recognition and regimes on protection
- role of targeting, assessment of protection risks and effective protection of vulnerable communities
- changing dynamics of protection in protracted conflicts, including how protection conditions, triggers, and activities change over the course of a protracted conflict
- interactions between protection and South-South displacement including prior to displacement, along the journey, and at the destination.

# Education in Conflict and Crisis Research

---

**Purpose:** to build evidence on the role and delivery of education in diverse contexts of conflict and protracted crisis, to ensure quality education opportunities.

Possible research themes expected include:

- education delivery, access and quality during conflict and emergencies, including responding to the needs of children, women and girls and other crisis affected groups
- potential opportunities offered by innovations in service re-design, digital and other technologies and interactions with issues of humanitarian protection
- the role of education in building future peace and stability and addressing issues such as cultural identity and indigenous knowledge development, empowerment, difficult or conflicted heritages/pasts, behaviour change and sustainable livelihoods.

# AHRC Network Plus Timetable

---

**AHRC town hall meetings:** 14<sup>th</sup> February (Birmingham) 25<sup>th</sup> February (London)  
and 12<sup>th</sup> March (Edinburgh) 2019

**Outline Call opens:** 13<sup>th</sup> February 2019

**Deadline for outline proposals:** 16:00 Tuesday, 9<sup>th</sup> April 2019

**Full Call opens:** 30<sup>th</sup> May 2019

**Deadline for full proposals:** 16:00 Thursday, 19<sup>th</sup> September 2019

**Outcomes announced:** December 2019

**Projects start:** 1<sup>st</sup> April 2020

# AHRC Network Plus Examples

---

- **AHRC:** Over £9M of GCRF funding across five major interdisciplinary networks using the AHRC's 'Network Plus' model. Designed to bring together a wide range of UK arts and humanities research expertise with scholars and non-academic partners in low- and middle-income countries.  
<https://ahrc.ukri.org/innovation/network-plus/>
- **Centre for the Study of International Slavery:** Supports and shares leading research about human enslavement and its legacies.
- **Changing the Story:** Helps young people whose lives have been affected by conflict; it will showcase how the arts and humanities can help those in need.
- **Global Research Network on Parliaments and People:** Investigates the vital role arts and humanities play in strengthening democracy internationally.
- **Rising from the Depths:** Studying marine cultural heritage along the coast of east Africa in Kenya, Tanzania, Mozambique and Madagascar.
- **The Nahrein Network:** A historical project that aims to prove the value of the arts and humanities to education and post-conflict development in Iraq and neighbouring countries.

# Cultures, Behaviours and Histories of Agriculture, Food, and Nutrition

---

## Overview:

- £4 million of funding to be made available through two calls
- Partnership building awards
- £50k and £200k funding limits
- 12 to 24 months duration
- Focus on the intersection of culture, history, behaviour and society with all stages of the food systems chain, from production through to consumption and policy, in Lower and Middle Income Countries (LMICs)
- Must be challenge focussed and ODA compliant
- Should be interdisciplinary

# Cultures, Behaviours and Histories of Agriculture, Food, and Nutrition

---

## Timetable:

- **First call launches:** February 2019
- **Workshop:** 8<sup>th</sup> March 2019
- **First call closes:** May 2019
- **Outcomes of first call:** August 2019
- **Projects from first call start:** October – December 2019
- **Second workshop(?):** September/ October 2019
- **Second call launches:** Autumn 2019
- **Second call closes:** Late 2019
- **Projects from second call start:** Spring 2020



# GCRF Challenge: Global Health

## GCRF Health and Context Call

- Up to three-year research projects
- Project value between £1-2 million (at 80% FEC for UK costs, 100% FEC for overseas costs)
- Call is being led by the MRC, in partnership with ESRC, AHRC, NERC, and BBSRC
- Closing date: **2<sup>nd</sup> April 2019**



### Scope

- Seeking proposals for interdisciplinary research addressing wider contextual factors contributing to the burden of infectious and non-communicable diseases (NCDs)
- May include social, cultural, historical, and religious beliefs and practices, or wider ecological, biological and environmental factors
- Looking to fund consortia conducting ambitious research that:
  - Determines causal relationships between contextual influences and health
  - Develops or tests feasible interventions that are sensitive to or mitigate contextual influences on health
- Encourage the engagement of community stakeholders in the development and implementation of proposals.

Queries can be directed to: [international@headoffice.mrc.ac.uk](mailto:international@headoffice.mrc.ac.uk)

# GCRF Challenge: Resilience

## GCRF Equitable Resilience: ensuring resilience enhances the Sustainable Development Goals

- Up to three-year research projects
- Aim to support around 10 projects at a value of up to £1 million FEC
- Call is being led by ESRC, in partnership with NERC, AHRC and EPSRC
- Deadline for 'expressions of interest' (encouraged) due **7<sup>th</sup> March 2019**
- Closing date for full proposals: **17<sup>th</sup> April 2019**



### Scope:

- Aims to provide an evidence base on the ways in which climate change adaptation, humanitarian action, risk management and resilience can enable pathways for transition to sustainable development - ensuring equity across poor and marginalised communities in developing countries.
- Requires working at the interface of resilience and development as part of interdisciplinary projects (covering social and economic, environmental, physical and engineering sciences, or the arts and humanities) and working very closely with policy or practice
- The call is structured around four areas: Transformative adaptation; Survivor-led humanitarian response; Enhancing local capacity through understanding and reducing risk; Risk management-development co-benefits

Queries can be directed to: [EquitableResilience@esrc.ukri.org](mailto:EquitableResilience@esrc.ukri.org)

# GCRF Challenge: Resilience

---

## GCRF Multiple and Systemic Risks

- Aim of this programme is to provide a better understanding of the drivers of multi-hazard events and how the impacts of these events cascade through socio-economic systems
- Knowledge gained can be used to determine which interventions and policies are effective at mitigating the risks, particularly for vulnerable groups
- Focus is on multiple natural hazards and the interrelated natural, social, economic, cultural and health risks and effects that can be triggered by these events, or can amplify or compound their impacts.
- UKRI will host a live online webinar for potential applicants within 2-3 weeks of the call opening
- **Due to launch in next 2 weeks!** Queries can be directed to: [GCRFResilience@nerc.ukri.org](mailto:GCRFResilience@nerc.ukri.org)

# GCRF Challenge: Food Systems

---

## **GCRF A combined Food Systems approach to developing interventions to address the Double Burden of Malnutrition**

- Looking to support interdisciplinary proposals that seek to work across the food system to reduce the global double burden of malnutrition
- Encompasses both under-nutrition (too few calories) and over-nutrition (too many calories), both of which are associated with inadequate micronutrient intakes, otherwise known as the 'Double Burden of Malnutrition'
- Will invite applications for new research that builds upon and scales up existing UK ODA investments in Food Systems, to maximise the potential for impact
- UKRI-BBSRC will upload a recorded webinar within 2-3 weeks of the launch of the call alongside an FAQ factsheet
- **Due to launch next week!** Queries can be directed to: [FNH@bbsrc.ac.uk](mailto:FNH@bbsrc.ac.uk)

## **Call Mechanisms and Hints and Tips**

**Dr Sarah Plowman – Senior ODA Policy Manager**

UKRI International Development team

22<sup>nd</sup> February 2019

# Call rules and policies

---

- Please read the guidance
- Rules are being 'harmonised' across UKRI so may be different from previous calls
- Due diligence – guidance available: <https://www.ukri.org/files/funding/due-diligence-guidance-for-ukros-pdf/>



# General observations – previous GCRF activities

---

- Learn from others!
- Proposals need to be ODA challenge-led/solution-focused
- Applicants need to demonstrate an understanding of the context (societal, cultural, political, historical, economic etc.)
- Don't play disciplinary bingo
- In-country partners need to be appropriate, involved in the scoping and delivery of the research and add value



## General observations – previous GCRF activities (cont.)

---

- You will be assessed based on what's on the page – the panel/reviewers won't make any assumptions!
- Panels are often broad
  - interdisciplinary, international, non-academics/users
  - not everyone around the table will be an expert in your field
- Be clear and realistic about the potential impact – we're not expecting you to solve global poverty in a single grant!
  - Impacts must be directly associated with this grant
  - What are the milestones/steps along the way?
  - What impacts are anticipated during the lifetime of the award?
  - What are the benefits beyond the lifetime of the grant?

# Is it Official Development Assistance?

---

GCRF is based on the broad OECD ODA definition.

1. Which **country/ countries on the DAC list** will directly benefit from this proposal and are these countries likely to continue to be ODA eligible for the duration of the research?
2. How is your proposal directly and **primarily relevant to the development challenges of these countries?**
3. How do you expect that the outcome of your proposed activities will **promote the economic development and welfare** of a country or countries on the DAC list?

# ODA compliance statement

---

This is not just a box ticking exercise – proposals must demonstrate they are ‘in the spirit of ODA’

- Investigate a **specific problem** and seek **specific outcomes** which will have a **targeted impact** on the relevant developing country(ies);
- Identify **country specific challenges/sub-challenges** and provide evidence as to **why this is a problem** for the specific developing country(ies);
- **Address the issue** identified effectively and efficiently, working **in collaboration** with others as appropriate;
- Identify **appropriate pathways to impact** taking into consideration the **local context** to ensure that the developing country benefits from the research.

# Promoting equitable partnerships

- Fairness, transparency, mutual responsibility, mutual benefit - maximise benefits and mitigate risks
- ✓ Joint agenda setting - mutual agreement on meaning and purpose of the work
- ✓ Clarity of roles and responsibilities
- ✓ Fair recognition of interests and incentives of all partners
- ✓ Build mutual trust – transparency and accountability (decision making and budgets)
- ✓ Regular communication – avoid assumptions
- ✓ Invest time in the partnership – building relationships is a long term process – build time into the project and request funds for face to face meetings
- ✓ Regular reviews of health of the partnership
- ✓ Develop an agreed dispute resolution process

# Guidelines and toolkits

- A Guide for Transboundary Research Partnerships – 11 Principles  
[https://naturalsciences.ch/organisations/kfpe/11\\_principles\\_7\\_questions](https://naturalsciences.ch/organisations/kfpe/11_principles_7_questions)
- Research for development impact: The role of equitable partnerships <https://www.espa.ac.uk/>
- Rethinking Research Partnerships: Discussion Guide and Toolkit  
<https://rethinkingresearchpartnerships.com/>
- Partnership Assessment Toolkit  
<http://www.ccghr.ca/resources/partnerships-and-networking/partnership-assessment-tool/>



Check the specific call documentation about Principal and Co-Investigator eligibility.

## Entering applicants

- All Principal and Co-Investigators must have a fully registered 'Research Proposal' type Je-S account
- Please ensure that you **submit any account requests as soon as possible.**

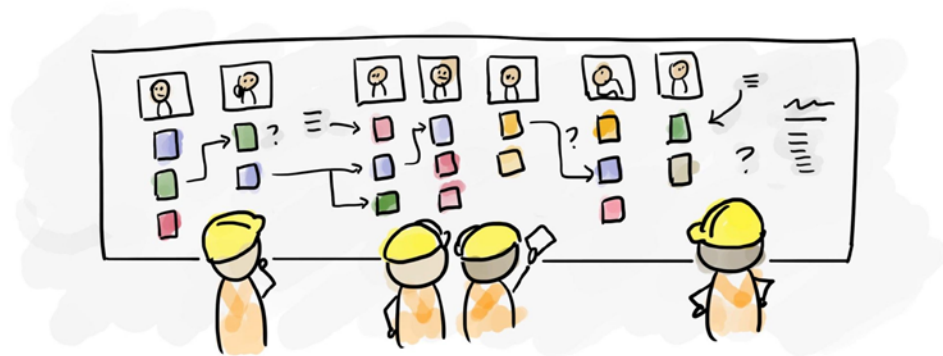
Contact Je-S helpdesk for technical queries

- [JeSHelp@rcuk.ac.uk](mailto:JeSHelp@rcuk.ac.uk)
- 01793 444164

# Pathways to Impact

Should:

- provide timelines and milestones for grant specific activities
- identify a breadth of significant and measurable impacts
- demonstrate understanding of the societal and cultural context of the research
- outline the approaches taken to ensure sustainability and potential for legacy beyond the initial investment



## Advice of a DFID country adviser: partner, engage, represent

---

- Seek to create strong partnerships. In country researchers are likely to understand the problem; the political economy and opportunities for impact; they may have greater access
- Engage policy makers in country, but use their time wisely
- Engage with national processes & routine meetings for discussions on policy change; avoid stand alone meetings where possible
- Represent robust research and evidence relating to the challenge(s); don't lobby.
  - Draw on the wider body of evidence
  - Do the research conclusions pass real-world feasibility testing?
  - What would be the cost benefit of implementing change?



# Research uptake

Consider developing your own checklist:

- Stakeholder engagement
- Capacity building
- Communicating
- Monitoring and evaluation

[www.gov.uk/government/publications/  
research-uptake-guidance](http://www.gov.uk/government/publications/research-uptake-guidance)



# Considering your options

---

Bear in mind...

- Your area of research may not appear in the title!
- Remits may be broader than remit of the administering Research Council
- Different calls will support different types of grants
- These are not the only GCRF/ODA opportunities!

[www.ukri.org/research/global-challenges-research-fund/](http://www.ukri.org/research/global-challenges-research-fund/)  
[www.newtonfund.ac.uk/](http://www.newtonfund.ac.uk/)

# Questions?

[gcrf@rcuk.ac.uk](mailto:gcrf@rcuk.ac.uk)

Sarah Plowman  
Senior ODA Policy Manager  
01793 444050

Rob Felstead  
Head of Policy and Planning  
01793 444257

[JeSHelp@rcuk.ac.uk](mailto:JeSHelp@rcuk.ac.uk)  
01793 444164

