

MANCHESTER
1824

The University of Manchester
The Whitworth



WELLY WALK

A guide to help you
explore our park

the **Whitworth**

WELCOME TO WHITWORTH PARK

Please don't pick up anything living
and remember to put litter in the bins.

When you are ready, head indoors to
warm up, dry off or relax in the gallery
and our Café in the Trees.

There are toilets and changing
facilities in the gallery.

Did you know

We have a Cultural
Park Keeper?


Find out more about their art and nature
activities and events in the park at
www.whitworth.manchester.ac.uk

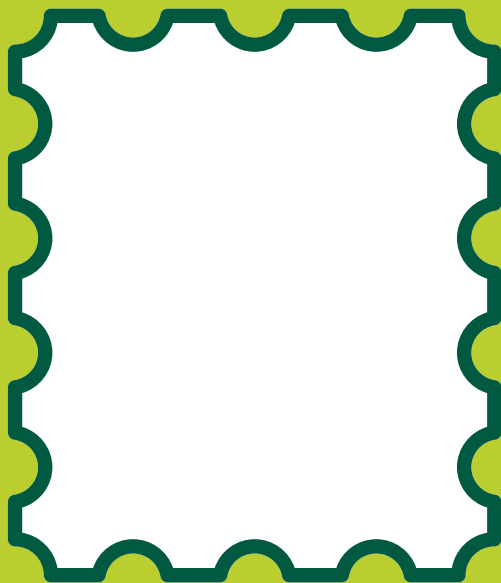


Scan to
find out more



THIS BOOK BELONGS TO:

 Fill out this page and draw a picture of yourself.



Did you know?

There is a special
mirror tree in our park
that might help you.
Can you find it?

NAME:

AGE:

FAVOURITE ANIMAL:

The "mirror tree" is actually a sculpture by the artist, Anya Gallaccio.

CAN YOU FIND OUR SNOWMAN?


If you find him, what does he feel like?

☑ Tick the shapes that you feel.

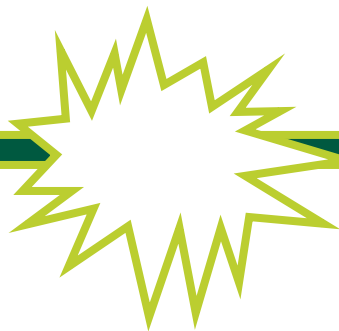


Nate Lowman, Snowman, 2014

WHAT WOULD A SNOWMAN DO IN THE PARK?

 Create your own comic.

AND THEN...
THE SNOWMAN, WOKE UP...



ARE YOU READY TO EXPLORE?

Walk around the park, and see what you can find.

☑ Tick what you can find.



Honey Bee



Horse chestnut



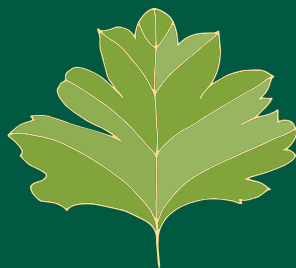
Sparrow



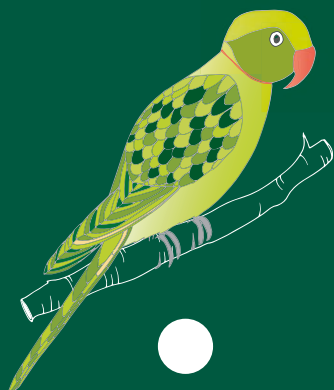
Squirrel



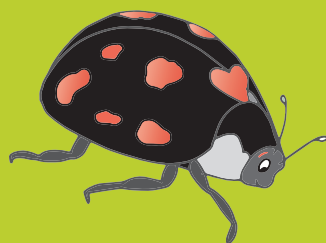
Magpie



Hawthorn



Parakeet



Lady bird




Giant Sequoia



London Plane

ARE YOU READY TO LISTEN?


Find a quiet spot, close your eyes, and listen carefully.

 Write down what you can hear.



CAN YOU FIND THE ART GARDEN?

There are many different types of plants and flowers here.


 Get a grown-up to help you look for these three plants.

Rub the leaves between your fingers. Do they smell?



CAN YOU DESIGN YOUR OWN PARK?

What would you have in your ideal park?

 Scribble your perfect plan here.



What's in your park?

Swings? Slides? Birdboxes?
It's up to you.





Did you know

A long time ago the park used to have a bandstand, boating lake and a weather station?



Did you know

Green ring-necked parakeets
nest in Whitworth Park?

