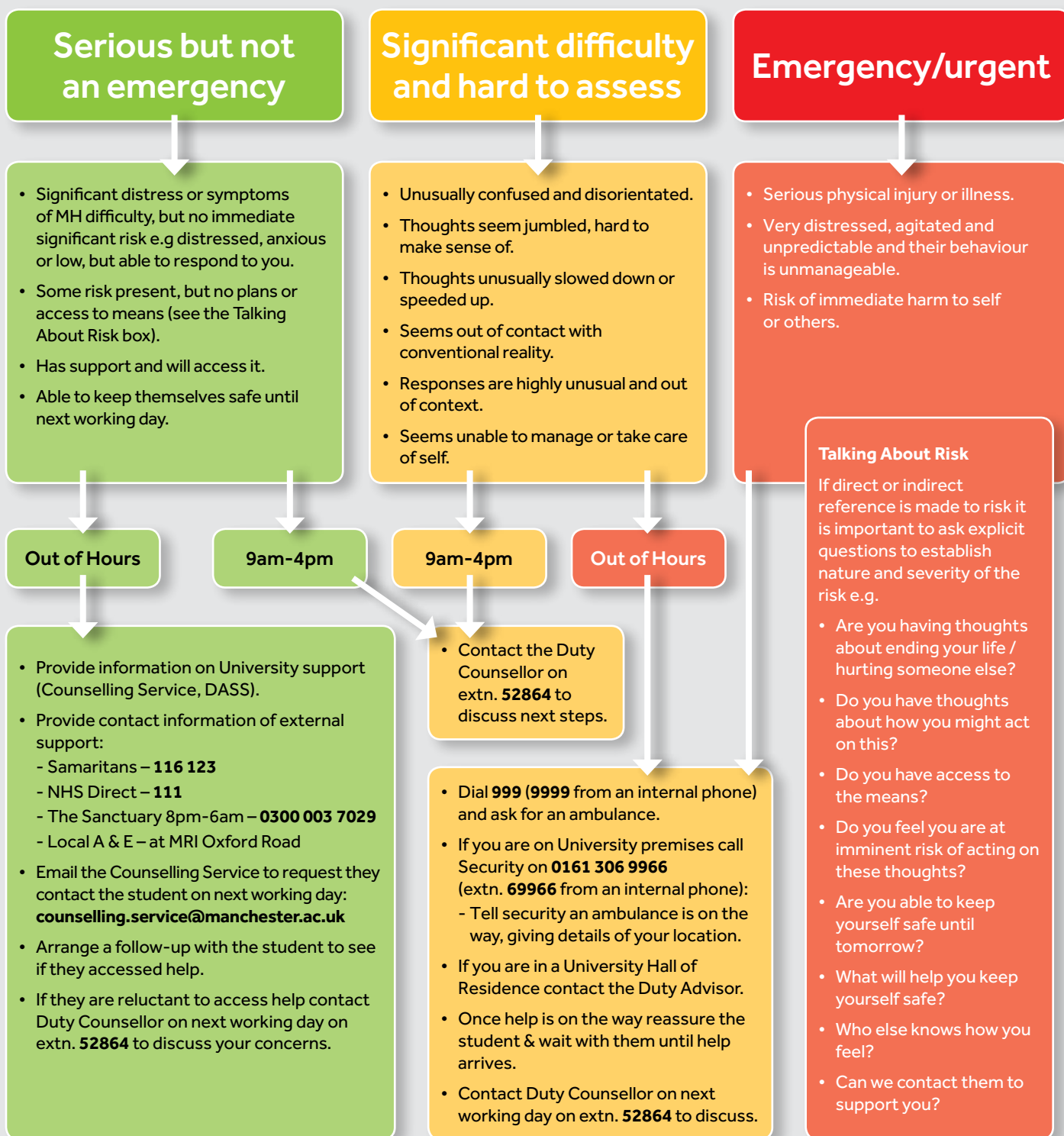


Significant Concerns for Student



Record what's happened and any actions you took according to your local systems. Consult with local colleagues and escalate as appropriate. Consider any further steps that might be required e.g. referral to DASS, or consideration under the Fitness to Study Policy and Procedures.

You may feel upset by what's happened; talk to your colleagues as appropriate, or consider the Counselling Service for support.

For further information and training on supporting students, and on when and where to refer students for support go to:
www.counsellingservice.manchester.ac.uk/trainingforstaff