

HIGH LEVEL ORGANISATIONAL STRUCTURES AND SENIOR MANAGEMENT TEAMS

2025

WE ARE
TRANSFORMING
LIVES BY
BEING AT THE
FOREFRONT
OF DISCOVERY,
LEARNING AND
TRANSLATION.

CONTENTS

MESSAGE FROM THE DEAN	3
FACULTY STRUCTURE	4-5
FACULTY LEADERSHIP TEAM	6
ACADEMIC MANAGEMENT - ASSOCIATE DEANS	7
PROFESSIONAL SERVICES LEADERSHIP TEAM	8
HEADS OF SCHOOLS AND DIVISIONS	9-11

WE ARE A COMMUNITY OF COLLEAGUES MAKING A REAL DIFFERENCE, IN MANCHESTER AND AROUND THE GLOBE

Our Faculty of Biology, Medicine and Health has an annual income of £122 million, 11,000 students, 3200 staff and an annual budget of £300 million. With over 30 undergraduate courses, and around 90 postgraduate taught courses, the Faculty is comparable to a medium-sized UK university. Combining discovery biology, clinical application and patient care within a single Faculty – particularly in a region with notable health inequality – provides us with a real opportunity to have a very significant impact on people's lives.

OUR STUDENTS ARE OUR PRIORITY

We ensure our students are empowered to learn and achieve and leave equipped with the knowledge, skills and dispositions for lifelong learning, ready to shape the world around them. Our postgraduate students and researchers are involved in a diverse range of study, from short-term, professionally linked programmes through to research training in multidisciplinary areas.

We are the largest supplier of healthcare graduates to the NHS in the North West of England. Students within the Faculty develop their practical skills by working alongside professional staff at nearly every hospital and primary care trust within Greater Manchester.

MAKING A DIFFERENCE NOW AND FOR THE FUTURE

In our Faculty, social responsibility is embedded in research and teaching, through our centres of research excellence, our teaching programmes, preparing our graduates of the future to improve the health and wellbeing of society, transforming lives. Consequently, we are delighted to be ranked number one in the UK and Europe, and number two in the world for social and environmental impact (Times Higher Education Impact Rankings 2023). Our commitment to achieving the United Nations' Sustainable Development Goals (UN SDGs) is unmatched; we're the only university in the world to rank in the top ten in every year of the Times Higher Education Impact Rankings. We're also ranked number one in the UK and Europe, and third in the world, in the QS World University Sustainability Rankings, for our environmental, social and governance impact.

In practice this requires ground-breaking collaborations with local, national and international partners. Our goals are big and we seek to tackle huge

challenges such as transforming cancer care through initiatives such as the Kenya UK Health Alliance.

It's not just about health care. Our researchers are working on solving some of the biggest challenges concerning environmental sustainability and many of our staff and students are committed through our 50,000 actions program. With the University's commitment to being zero carbon by 2038 our environmental sustainability strategy will be more important than ever. And, of course, we also look internally to the progress we need to make. We have a genuine commitment to equality of opportunity for our staff and students and are proud to employ a workforce that reflects the diverse community we serve, with equality diversity and inclusion at the heart of our vision and strategic plan.

Our size, scale and complexity can bring its challenges but it is also our strength. The breadth and depth of what we do, as well as our interdisciplinary, collaborative approach provides us with infinite opportunities to make a difference. The passion, skill and talent of our colleagues enables us to respond to those opportunities and work together to tackle some of the world's most urgent problems.

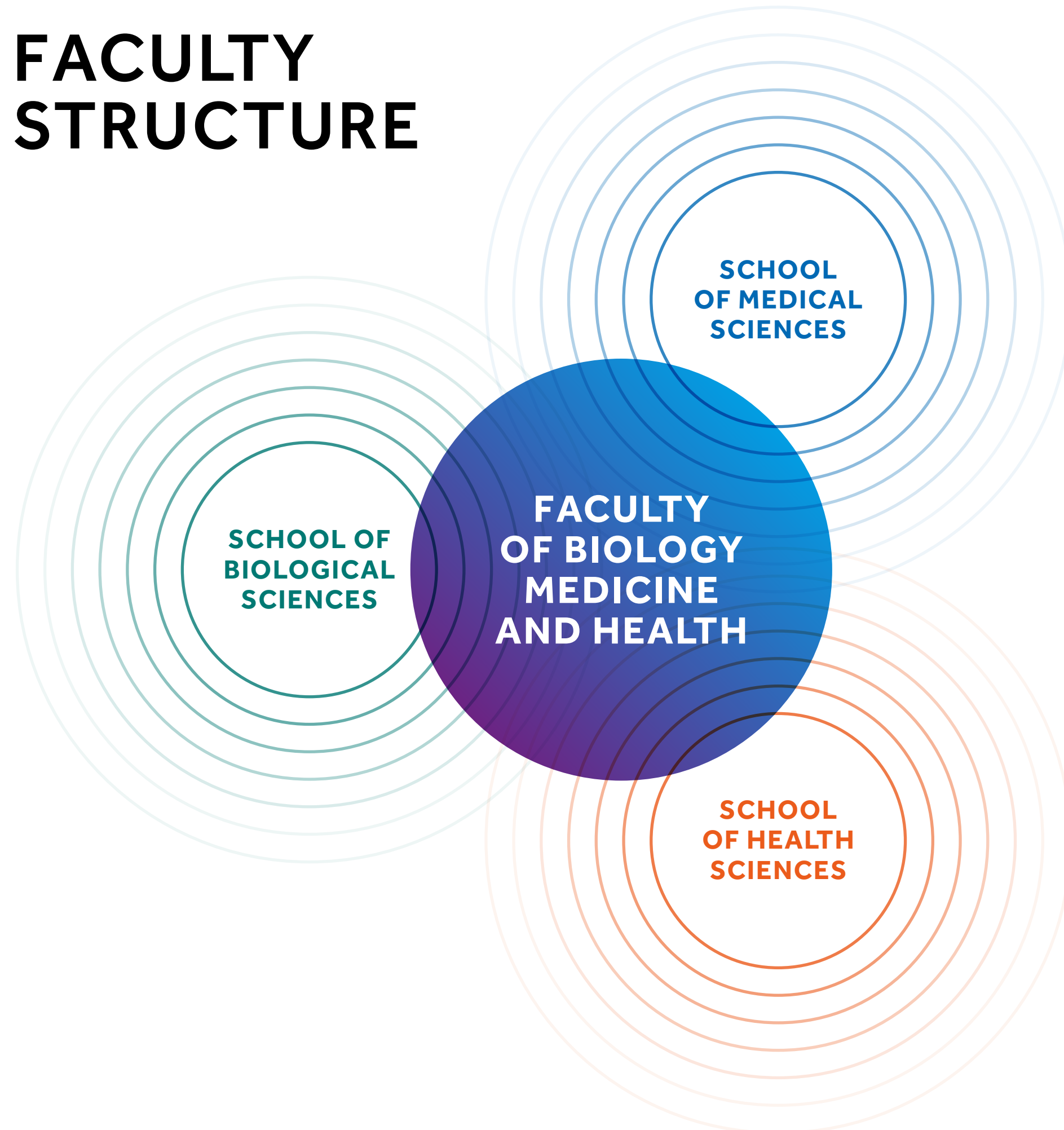
"WE HAVE THE BREADTH OF EXPERTISE NEEDED TO TACKLE ISSUES OF GLOBAL IMPORTANCE AND ADDRESS GLOBAL HEALTH INEQUALITIES."

Professor Allan Pacey
Deputy Vice-President and Deputy Dean



OUR STRUCTURE ENCOURAGES
COLLABORATIVE WORKING, ENABLING
STAFF TO DELIVER INNOVATIVE,
WORLD-LEADING RESEARCH AND
TEACHING THAT HAS A VERY REAL AND
POSITIVE IMPACT ON PEOPLE'S LIVES.

FACULTY STRUCTURE



OUR FACULTY

We have three Schools, each with six divisions. We also pay special attention to social responsibility, teaching, learning and the student experience, research and innovation, and internationalisation. These areas overlay the Schools and are integral to our ability to deliver our mission and achieve our vision of transforming lives through discovery, learning and translation.

SCHOOL OF BIOLOGICAL SCIENCES

Division of Cell Matrix Biology & Regenerative Medicine
Division of Evolution, Infection & Genomic Sciences
Division of Immunology, Immunity to Infection & Respiratory Medicine
Division of Molecular & Cellular Function
Division of Musculoskeletal & Dermatological Sciences
Division of Neuroscience

SCHOOL OF HEALTH SCIENCES

Division of Psychology, Communication & Human Neuroscience
Division of Informatics, Imaging & Data Sciences
Division of Nursing, Midwifery & Social Work
Division of Pharmacy & Optometry
Division of Population Health, Health Services Research & Primary Care
Division of Psychology & Mental Health

SCHOOL OF MEDICAL SCIENCES

Division of Cancer Sciences
Division of Cardiovascular Sciences
Division of Dentistry
Division of Developmental Biology & Medicine
Division of Diabetes, Endocrinology & Gastroenterology
Division of Medical Education (including CHSTM)

FACULTY LEADERSHIP TEAM



Jennie Stewart

Head of Faculty Communications,
Marketing and Student Recruitment



Simon Hubbard

Vice-Dean and Head of the
School of Biological Sciences



Andy Brass

Vice-Dean and Head of the
School of Health Sciences



Tony Heagerty

Vice-Dean and Head of the
School of Medical Sciences



Keith Brennan

Vice-Dean for
Internationalisation



Elizabeth Micakovic

Executive Director of Faculty
Operations



Rowan Fawcett

Interim Lead People Partner FBMH



Professor Ashley Blom

Vice-President and Dean



Allan Pacey

Deputy Dean



Philippa Woods

Head of Faculty Finance



Matt Crofts

Head of Planning, Compliance and
Governance



Jennifer Hallam

Vice-Dean for Teaching,
Learning and Students



Andy Trafford

Vice-Dean for
Research and Innovation



Professor Natalie Gardiner

Vice-Dean for
Social Responsibility



Paul Dark

Vice-Dean for Health and
Care Partnerships

ACADEMIC MANAGEMENT - ASSOCIATE DEANS

TEACHING, LEARNING AND STUDENTS

Adam Danquah

Inclusive Education and Engagement

Paul Shore

Flexible Learning and Digital Education

Richard Baker

Quality, Standards and Accreditation

Sam Griffiths-Jones

Associate Dean for Student Recruitment,
Marketing and Admissions

Georgina Moulton

Associate Dean for Teaching Excellence
and Student Outcomes

SOCIAL RESPONSIBILITY

Karolina Kluk-De Kort

Associate Dean for Equality,
Diversity and Inclusion (EDI)

Maggy Fostier

Associate Dean for
Environmental Sustainability

RESEARCH AND INNOVATION

David Bechtold

Associate Dean for Postgraduate Research

Andy Sharrocks

Associate Dean for Research Technology

Daniella Delneri

School of Biological Science

Nicky Cullum

School of Health Sciences

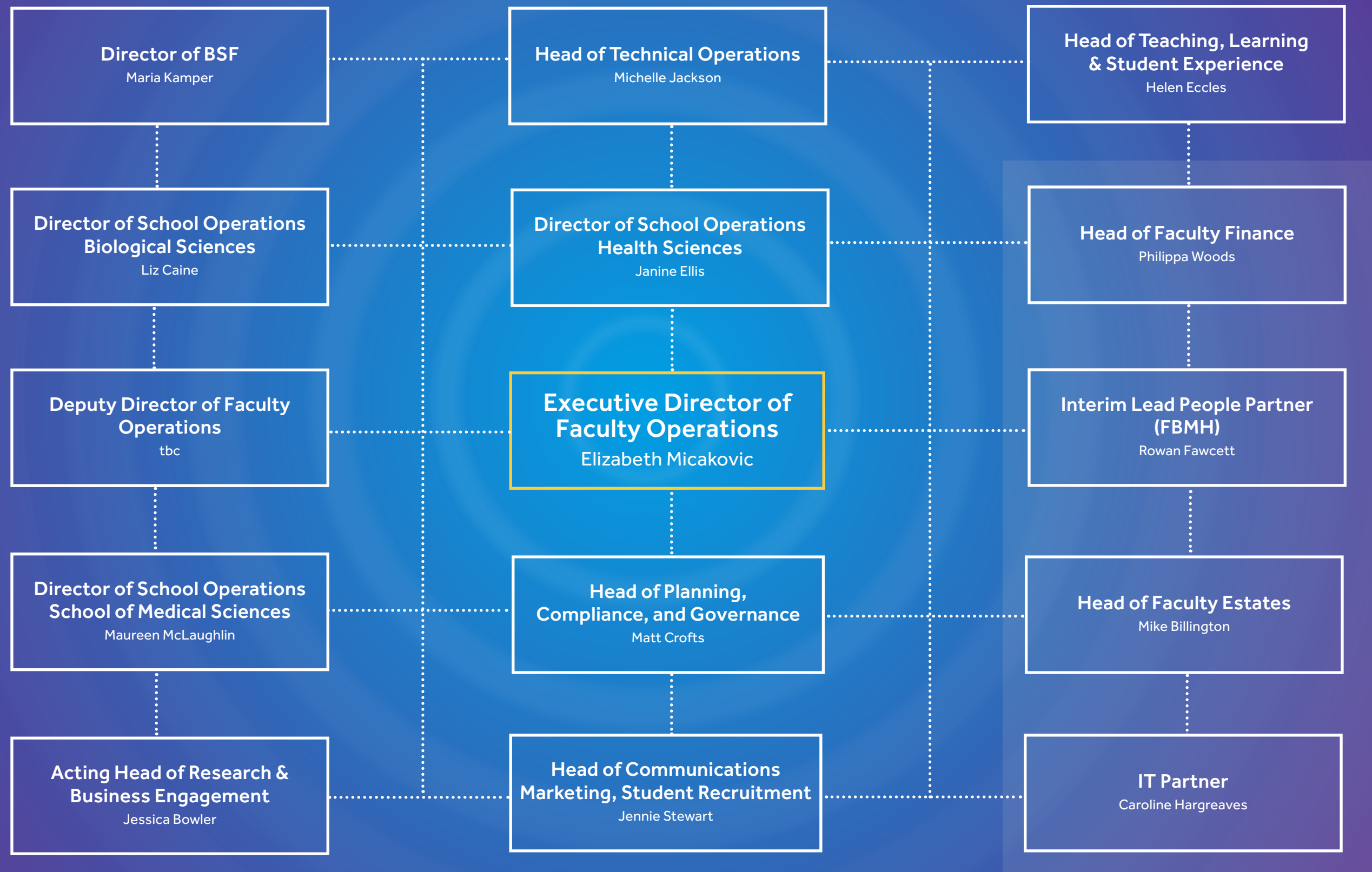
Anne-Marie Glenny

School of Medical Sciences

Mike White

Fellowships and Talent Development

PROFESSIONAL SERVICES LEADERSHIP TEAM



Staff based in these PS teams report into the central directorates for IT, Estates, P&OD and Finance

HEADS OF SCHOOLS & DIVISIONS

SCHOOL OF BIOLOGICAL SCIENCES

Our primary goal is the delivery of outstanding teaching and learning in biology and biomedical sciences, underpinned by world leading research. We are champions of team-based science, engaging in cross-cutting research and teaching activities, as well as focussing on our own specialities.

Ranked 5th nationally for Biological Sciences in the 2021 Research Excellence Framework, we ask a broad range of fundamental questions within the discipline of biological sciences, from basic science and discovery through to clinical trials. We translate our understanding of and discoveries within these disciplines into real world solutions helping to tackle global challenges.

The size and scale of our community of professionals in biological sciences, as well as our local and global partnerships, enables us to work together on pioneering approaches as well as inspiring the next generation with world leading opportunities and teaching.

Professor Simon Hubbard,
Vice Dean and Head of School of Biological Sciences



HEADS OF SCHOOLS & DIVISIONS

SCHOOL OF HEALTH SCIENCES

The School provides undergraduate and postgraduate education across the field of health related professions. Our researchers have a wealth of expertise across the field of health science and a strong reputation for applied health research, contributing to policy change. Our research activities tackle health and social care issues at local, national and global level while also enabling us to continually evolve and achieve teaching excellence.

We are uniquely placed to drive change where it is desperately needed thanks to the breadth and depth of our specialisms as well as our understanding of the complex systems which govern the healthcare sector. As a community of health science professionals we understand the realities of the systems but critically, we sit outside the system itself, allowing us to be a driving force for change. We know how to translate our research into real world impact; from the development and implementation of new technologies to the creation of new professions and ensuring our professionals of the future have the capabilities they need. We have the talent, skills and experience we need to make a real difference and as a School we are focussed on giving our colleagues the time and resources they need to do this vital work. Our work spans a diverse portfolio but we are united by our shared values and committed to working collaboratively cross School, Faculty and Institution to find the right solutions to the challenges of today and the future.

Professor Andrew Brass
Vice Dean and Head of School of Health Sciences



HEADS OF SCHOOLS & DIVISIONS

SCHOOL OF MEDICAL SCIENCES

A world leading integrated medical sciences research and teaching School, we are the largest provider of healthcare graduates to the NHS in the Northwest and are host to the largest medical school in the UK as well as the highest-ranking Dental School in the north of England.

The School carries out internationally recognised research spanning bench-side research science in areas such as Cardiology and Developmental Biology through to clinical trials. Strong funding links with major UK charities support our research and generate an annual income around £30 million. We have one of the University’s Research Beacons in Cancer Sciences, represented through our Division of Cancer Sciences and through our partnership with the Manchester Cancer Research Centre.

Our reach goes beyond the UK and we have international curriculum licencing agreements in Egypt and the Middle-East alongside a long standing partnership with the International Medical School. Plans to support our international teaching will come from the creation of a £2 million dental hub facility, the refurbishment of external lecture theatre space in Stopford and modernisation of teaching rooms as we transition to Team Based Learning (TBL) practice for the MBChB Medicine and eventually some of the BDS Dentistry programmes.

Professor Anthony Heagerty
Vice Dean and Head of School of Medical Sciences



THANK YOU
FOR THE
CONTRIBUTION
YOU MAKE
EVERY DAY