

SAFER CARE FOR PATIENTS WITH PERSONALITY DISORDER

The National Confidential Inquiry into Suicide and Homicide by People with Mental Illness

Key Findings

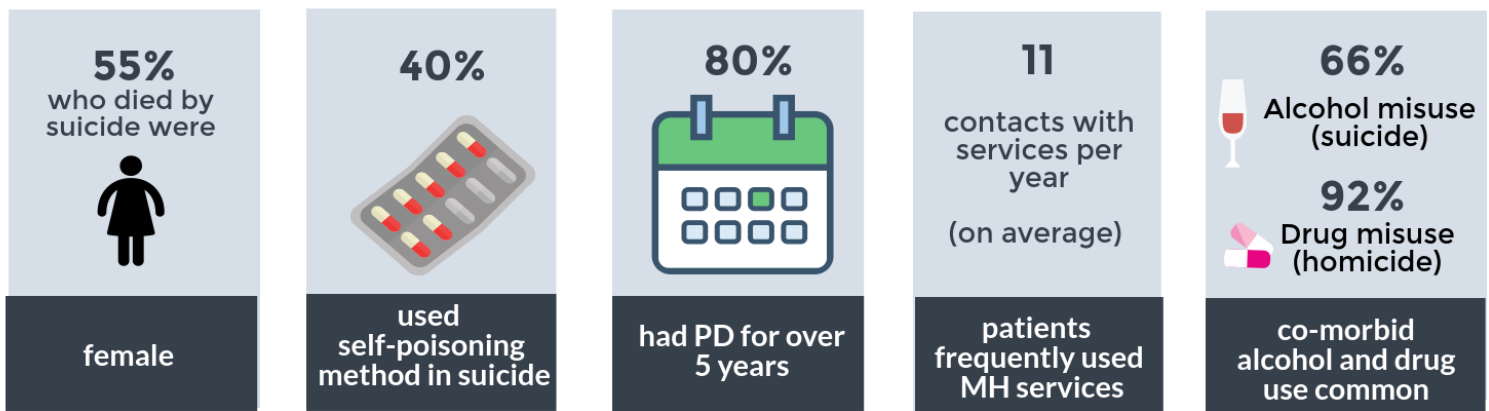
MANCHESTER
1824
The University of Manchester



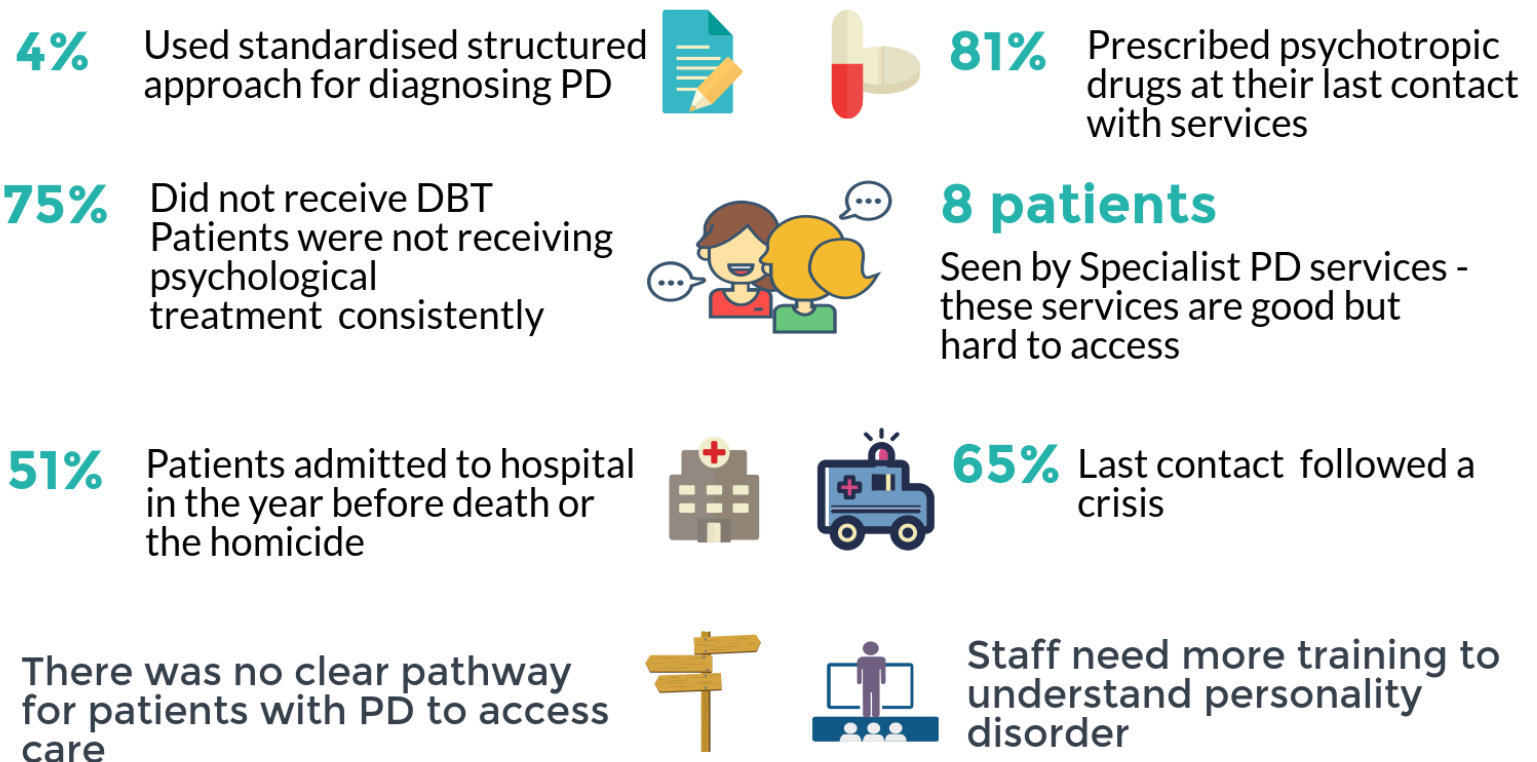
154 patients with personality disorder died by suicide in the UK in 2013

41 patients with personality disorder were convicted of homicide in the UK between 2010-2013

Patient characteristics



Care and treatment



"A lot of this has just been learning on the job."
(Nurse in focus group)

SAFER CARE FOR PATIENTS WITH PERSONALITY DISORDER

The National Confidential Inquiry into Suicide
and Homicide by People with Mental Illness

Key Messages



Patients were not receiving care consistent with NICE guidelines:



Psychological
interventions



Short-term
prescribing



Avoiding hospital
admission



Survey and focus groups with staff and
patients suggested these problems
may be more widespread



Therefore...

an examination of personality
disorder services is needed

Working with patients to understand their
traumatic experiences would help reduce stigma



Safer prescribing of psychotropic drugs
is needed to avoid fatal overdose

Risk is linked to co-existing drug and alcohol use;
dual diagnosis services should be available



Former patients should be involved in
staff training, advocacy and peer support