

Operating and installation instructions

All models:



Directions For Use



To avoid the risk of accidents
or damage to this appliance
It is **essential** to read these
Instructions before it is installed
and used for the first time.

Contents

▪ Caring for the environment_____	3
▪ Warning and safty_____	4
▪ Warning and safty_____	5
▪ Warning and safty_____	6
▪ Warning and safty_____	7
▪ Warning and safty_____	8
▪ Removing transit screws_____	9
▪ Ducting reqirements_____	10
▪ Cutting down chimney sections_____	11
▪ Minimum and maximum height requirements_____	12
▪ Non vented hoods_____	13
▪ Checking your goods_____	14
▪ Checking your goods_____	15
▪ Installation for STD, RND, OC hoods_____	16
▪ Installation for STD, RND, OC hoods_____	17
▪ Installation for STD, RND, OC hoods_____	18
▪ Installation for STD, RND, OC hoods_____	19
▪ Installation for STD, RND, OC hoods_____	20
▪ Installation for STD, RND, OC hoods_____	21
▪ Installation for CVG, ST, hoods_____	22
▪ Installation for CVG, ST, hoods_____	23
▪ Installation for CVG, ST, hoods_____	24
▪ Operating instructions all models_____	25
▪ Installation for OC hoods_____	26
▪ Installation for OC hoods_____	27
▪ Installation all Island hoods_____	28 31
▪ Changing the bulbs all models_____	32 -33
▪ Problem solving all models_____	34 -38
▪ Remote control operated hoods_____	39
▪ Luxair help line_____	40
▪ Cleaning and care_____	41 – 42
▪ Hood heights maximum and minimum_____	43
▪ Warranty Form _____	44
▪ Technical specifications_____	45



Disposal of the packing material

The transport and protective packing has been selected from materials, which are environmentally friendly for disposal, and can normally be recycled.

Packaging e.g. cling film, polystyrene and plastic wrappings must be kept out of the reach of babies and young children. Danger of suffocation!

Dispose of or recycle all packaging materials safely as soon as possible.

Ensure that electrical current is switched off to the appliance until after maintenance or repair work has been carried out by a suitably qualified engineer or electrician. Domestic repairs or attempted repairs will void the warranty.

The warranty of this appliance is not transferable to another party, i.e.: when another person or persons moves into a property where the appliance is already installed. However if the home is of a new build and has been installed as part of the new home then the warranty is valid by the home builder and a valid receipt should be obtained from them up on completion of sale.

Disposal of your old appliance

Electrical and electronic appliances often contain materials that, if handled or disposed of incorrectly, could be potentially hazardous to human health and to the environment. They are, however, essential for the correct functioning of your appliance. Please do not therefore dispose of your old appliance with your household waste.



Please dispose of it at your local community waste collection / recycling center and ensure that it presents no danger to children while being stored for disposal.

It should be unplugged or disconnected from the mains electricity supply by a competent person. If connected by a plug, the plug must be rendered useless and the cable cut off directly

Behind the appliance to prevent misuse. See the "Warning and Safety"

Warning and Safety instructions

This appliance complies with all relevant legal safety requirements. Inappropriate use can, however, lead to personal injury and damage to property.

To avoid the risk of accidents and damage to the appliance, please read these instructions carefully before using it for the first time. They contain important information on the safety, installation, use and maintenance of the appliance.

Keep these instructions in a safe place and ensure that all users are familiar with the contents. Pass them on to any future owner of the appliance.

Correct usage

This appliance is intended for domestic use only.
Luxair cannot be held liable for damage caused by improper or incorrect use of the appliance.
Warranty is not valid if installed in the following locations.
Pubs.
Clubs.
Restaurants or cafes.
Schools.
Business restaurants or buildings or used for commercial gain.


Technical safety

Before connecting the appliance to the mains supply, make sure that the connection details given on the data plate correspond with the on-site electricity supply; otherwise the appliance could get damaged. Consult a qualified electrician if in any doubt.


The electrical safety of this appliance can only be guaranteed when continuity is complete between the appliance and an effective earthing system that complies with local and national safety regulations. It is most important that this basic safety requirement is present and regularly tested, and where there is in any doubt, the household wiring system should be inspected by a qualified electrician. The manufacturer cannot be held liable for the consequences of an inadequate earthing system (e.g. electric shock).

Installation, maintenance and repair work may only be carried out by a suitably qualified and competent person in strict accordance with national and local safety regulations. Repairs and other work by unqualified persons could be dangerous. The manufacturer cannot be held liable for unauthorized work.


Warning and Safety instructions


 The appliance is only completely isolated from the electricity supply when:

- It is switched off at the wall socket and the plug withdrawn,
- The fuse from the fused spur connection unit is withdrawn,
- The mains fuse is withdrawn, or
- The screw-out fuse is removed (in countries where this is applicable).

 Do not connect the appliance to the mains electricity supply by an extension lead.


Extension leads do not guarantee the required safety of the appliance (e.g. danger of overheating).

 In countries where there are areas which may be subject to infestation by cockroaches or other vermin, pay particular attention to keeping the appliance and its surroundings in a clean condition at all times. Any damage which may be caused by cockroaches or other vermin will not be covered by the guarantee.


 Never use an open flame beneath the cooker hood. To avoid the danger of fire, do not flambé or grill over an open flame under the cooker hood. When switched on, the cooker hood could draw flames into the filter. Fat particles drawn into the cooker hood present a fire hazard.

When using the cooker hood over a gas hob, ensure that any burners in use are always covered by a pan. The burner should be switched off before


taking a pan off the hob, even for brief periods.


 Regulate the flames so that they do not extend beyond the base of the pan. If flames are not covered by a pan excessive heat can build up in the cooker hood with the risk of damage to the motor unit.

Always switch the cooker hood on when a cooking zone is in use, otherwise condensation may collect in the hood, which could cause corrosion.

 When cooking with oil or fat, chip pans and deep fat fryers etc, do not leave the pans unattended. Never leave an open grill unattended when grilling. Overheated oil and fat can ignite and could set the cooker hood on fire.

Do not use the cooker hood without the grease filters in place. This way you will avoid the risk of grease and dirt getting into the appliance and hindering its smooth operation.

 The grease filter should be regularly cleaned. A saturated filter is a fire hazard. See "Cleaning and care". For further information.

 Do not use a steam-cleaner to clean this appliance. Pressurised steam could reach the electrical components and cause a short circuit. Never use spray cleaners directly around the controls or buttons, this could also cause damage to the internal circuit board.

Warning and Safety instructions

Safety with children

This appliance is only intended for use by adults who have read these instructions it is not a toy! To avoid the risk of injury, keep children well away, and do not allow them to play with it or use the controls. They will not understand the potential dangers posed by it. They should be supervised whenever you are working in the kitchen.

Please be aware that on appliances with halogen lighting, the lamps will get very hot during use and remain hot for some time after switching off. To safeguard against burning, keep children well away from the lamps at all times. For instructions on changing bulbs, please refer to maintenance sector in this booklet.

Packaging e.g. cling film, polystyrene and plastic wrappings must be kept out of the reach of babies and young children. Danger of suffocation. Dispose of or recycle all packaging safely as soon as possible.

Installation

The distance between the top of the cooker/hob and the bottom of the cooker hood canopy must measure at least **365 mm**, unless a greater distance is specified by Luxair. If more than one appliance is fitted beneath the cooker hood, and they have different minimum safety distances to the cooker hood, select the greater distance.

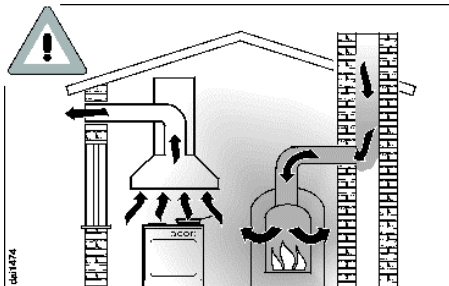
Safety regulations prohibit the fitting of a cooker hood over solid fuel stoves.

All ducting, pipe work and fittings must be of non-flammable material. These can be obtained from the Luxair web site or from local builders' merchants.

The appliance must not be connected to a chimney or vent flue, which is in use. Neither should it be connected to ducting, which ventilates rooms with fireplaces. If exhaust air is to be extracted into a chimney or ventilation duct no longer used for other purposes, seek advice.

Warning and Safety instructions

Using at the same time as other heating appliances that depend on the air from the room



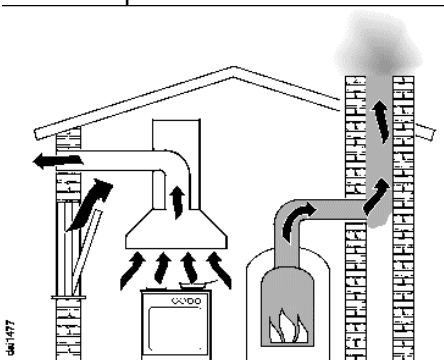
Warning - danger of toxic fumes

Great care should be taken when using the cooker hood at the same time and in the same room or area of the house as another heating appliance, which depends on the air in the room. Such appliances include gas, oil, wood or coal-fired boilers and heaters, continuous flow or other water heaters, gas hobs, cookers or ovens which draw air in from the room and duct exhaust gases out through a chimney or extraction ducting.

When used in extraction mode, with or without an external motor, the appliance draws air in from the room in which it is installed and from neighboring rooms. If there is insufficient air, an under pressure will occur. The heating appliance may be starved of oxygen, impairing combustion.

Harmful gases could be drawn out of the chimney or extraction ducting back into the room, with potentially fatal consequences.

In order to ensure safe operation, and to prevent gases given off by the heating appliances from being drawn back into the room when the extractor and the heater are in operation simultaneously, an under pressure in the room of 0.04 mbar (4 pa) is the maximum permissible.



Ventilation can be maintained by air inlets, which cannot be blocked, in windows, doors and outside wall vents, or by other technical measures, such as ensuring that the extractor can only be switched on when the heating appliance is switched off or vice-versa. A ventilation brick alone is not generally sufficient to ensure safe ventilation.

The overall ventilation condition of the dwelling must be taken into account. If in any doubt, the advice of a competent builder or, for gas, a "Corgi" installer, must be sought.

Warning and Safety instruction

Important: To avoid the danger of toxic fumes please observe the Warning and Safety instructions. This is especially crucial when using the cooker hood at the same time as another heating appliance, which relies on air from the same room. The cooker hood should be installed according to local and national building regulations. Seek approval from the building inspector where necessary.

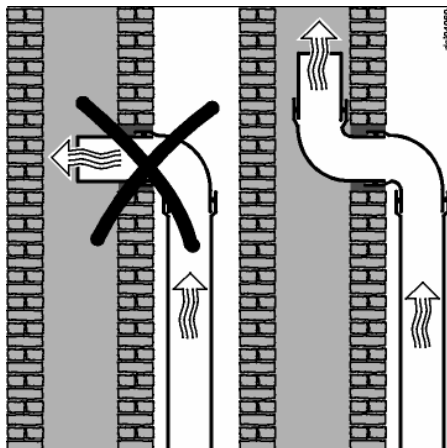
- All ducting, pipe work and fittings must be of non-flammable materials.
- The exhaust ducting should be as short and straight as possible.
- To ensure efficient air extraction, the diameter of the exhaust ducting should not be less than 125 mm.

If exhaust ducting with a diameter of less than 150 mm, or if flat ducting is used, the noise level of the cooker hood will increase and extraction will be less efficient.

Never reduce the diameter of the ducting, e.g. where narrower ducting has already been installed.

- Only use wide radius bends. Tight bends reduce the air throughput of the cooker hood.

- Only use smooth pipes or flexible hoses made from non-flammable materials for extraction connection.



- If the exhaust air is to be ducted into a vent flue, the ducting must be directed in the flow direction of the flue.

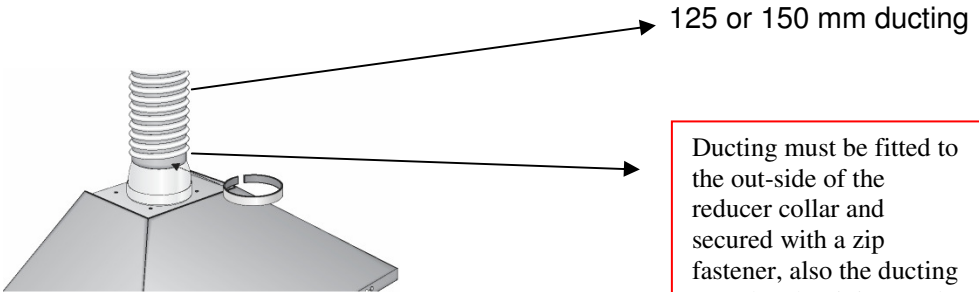
Warning:

Luxair will not exchange or repair damaged hoods caused by incorrect ducting being fitted, the minimum ducting must not be smaller than 125mm. never use ducting previously installed from your last extractor unit.

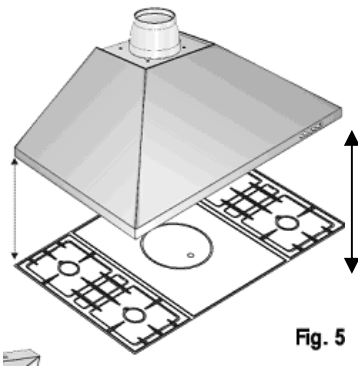
Warning Ducted out hoods

Please take notice of the following

All Luxair cooker hoods must be fitted with **125mm-150mm** ducting, this must not be reduced in any way for the entire length of its run, it must also not exceed **3.5mtrs** in length from the top of the motor housing connection to the outside vent plate (applies to all wall mounted and island models).



Ducting must be fitted to the out-side of the reducer collar and secured with a zip fastener, also the ducting must be aluminium and conform to fire regulations.
Kits can be purchased



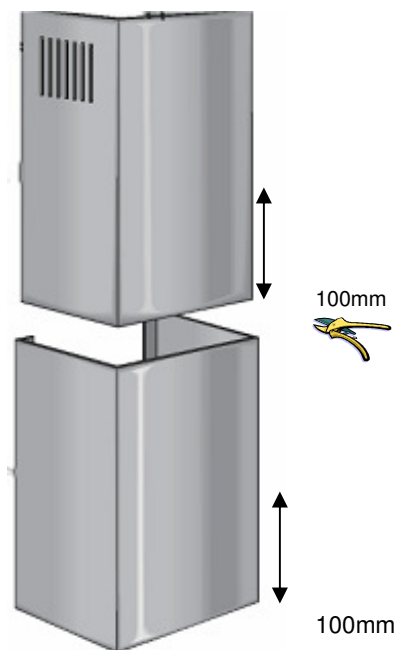
The minimum height setting measuring from the underside of the extractor, to the top of the gas hob is 750mm
And 650mm on electric hobs, please note that when using a hob larger than 60cm please set the minimum height to 750mm.

Warning:

Luxair will not cover the warranty if you have installed the cooker hood on either, 100mm ducting, or an old or existing ducting used by a previous appliance.

Cutting Down Chimney Sections

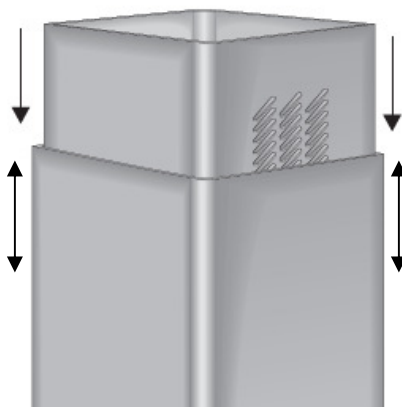
Luxair recommend that the following procedure be carried out by a qualified and competent person, cutting the extended chimney sections requires care and should only be attempted by a competent or qualified person.



It is recommended that the maximum you can cut from the chimney sections is 200mm, this would be done as diagram above on all wall mounted hoods, taking 100mm from the top section and 100mm from the bottom section using Sharpe tin snips. Or electric snipers.

Warning:

Luxair cannot be held liable for damage caused by carelessness when modifying the chimney sections; any modification damage caused by modifying this appliance is purely at your own risk. Your statutory rights are not affected



When cutting down chimney sections on Island hoods it is recommended that the hood is taken to a professional metal fabricator, they often have laser cutting equipment that can make the job easier, however if you attempt the job directly then electric tin nibblers should do the job. Follow instructions opposite.

Ducting Kits

Fig 1



1.5 mtr Ducting kit

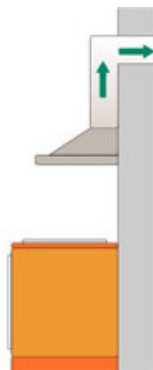
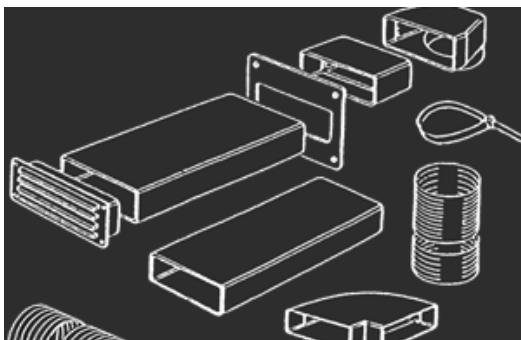
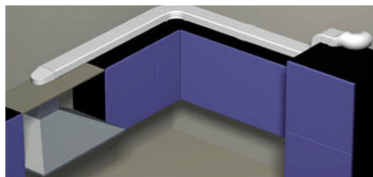


Fig 2



3.5 mtr Ducting kit



Ducting kits are used to vent you're kitchen odors to the outside of the house, and we recommend that only Luxair ducting kits are used with our products, this will also assure you that the product's warranty is not affected.

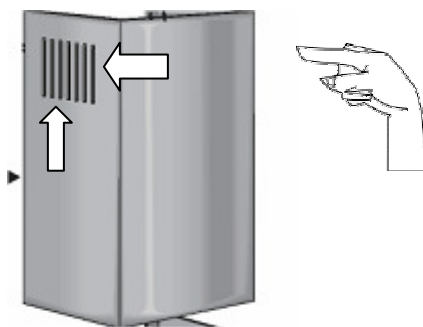
The 125mm system is designed to be used in conjunction with Cooker hoods and extraction fans with a maximum output of 850m₃ per hour.

All 125mm internal components are made from flame retardant Materials.

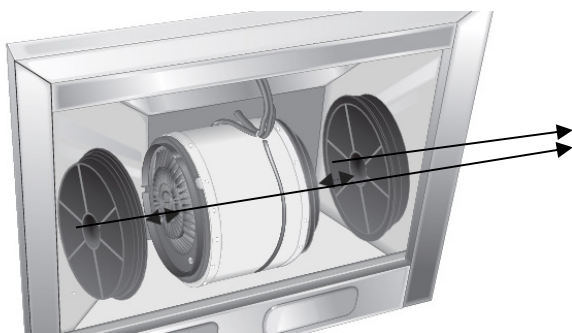
All wall outlets are UV stabilized. Please note that maximum extraction ducting length when vented does not exceed 3.5mtrs on wall models and a max of 5.5 mtrs on island hoods.

NOT SURE THEN CALL VISIT OUR WEB SITE
WWW.LUXAIRHOODS.COM

Cooker hoods that are not to be vented to outside walls



Please note that if the hood is not to be vented to an outside wall, the top section of the hood with the vents must be used, this allows the filtered air back into the room. Failure to do so will result in the hood being noisy and will cause it to vibrate; this will also void the warranty if this section is not used when installed in recirculation mode.



Note that when the hood is not vented to an outside wall, charcoal filters must be used in conjunction with the above vent system, image shows how to fit the filters to a standard hood, see page 21 and 23 for further instructions and other models.

Fitting the filters on standard or round hoods is as follows.

Offer the round filter to the side of the motor housing, twist clockwise slowly until you feel the filter sit, then twist clockwise until you feel it lock! Reverse the process to remove. **Please note that the charcoal filters will need replacing every two months**, failure to replace these filters will result in the warranty being void.

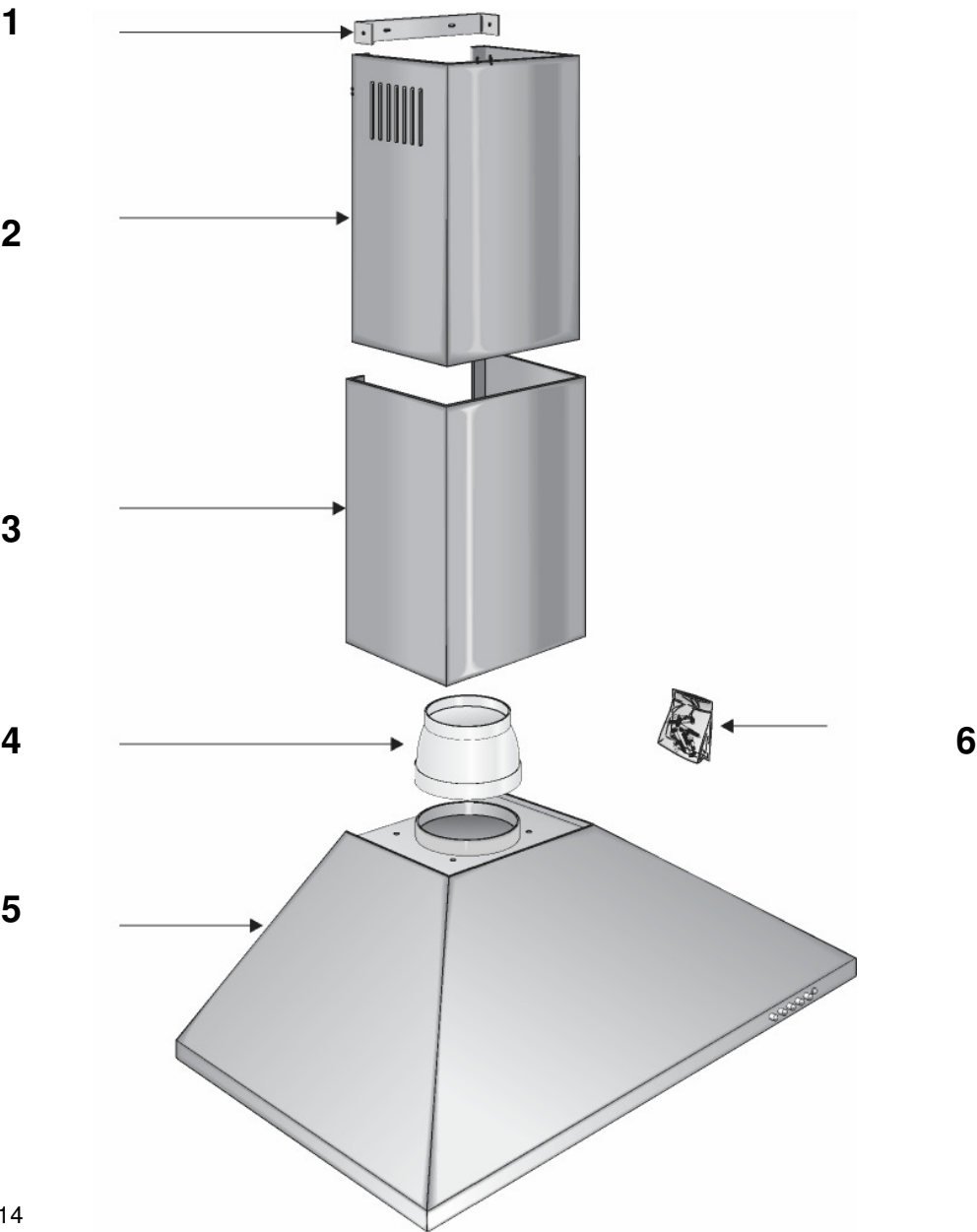
For replacement filters please visit our web site at

www.luxairhoods.com

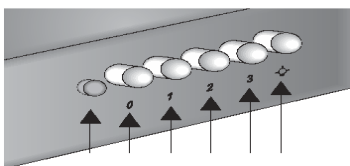
Please Check the Following Points

- 1) Unpack the hood and inspect the goods carefully, please check for any cosmetic damage before installation begins, Luxair will not accept liability for cosmetic damage after the hood has been installed, if damage is found then please contact the retailer from where the goods were purchased.
- 2) Check that all parts and fixings are packed in the box.
- 3) Do not remove any of the protective film until installation is complete, this will help reduce any accidental damage and help prevent scratching.
- 4) Remove the metal Grease filters immediately after opening packaging and store in a safe place, they will not be needed until installation is complete, this will also ensure against accidental damage of the filters.
- 5) You must use either a ducting kit or charcoal filters with all Luxair hoods.
- 6) All filters and ducting kits can be purchased from our web site, www.luxairhoods.com

Standard Wall Mounted Hoods, STD, RND, OC



- 1 **Wall Bracket**
 - 2 **Top Chimney Section with Vents**
 - 3 **Bottom Chimney Section**
 - 4 **Reducer**
 - 5 **Main Body**
 - 6 **fixing screws**
-



Press the button 1 to start the fan running on low, then increase to level 2 or 3 depending on cooking levels.

When the fan runs at power level 1. The indicator lamp will illuminate Red.

To select a power level

1-3 Use the numbered controls to select the power level required.

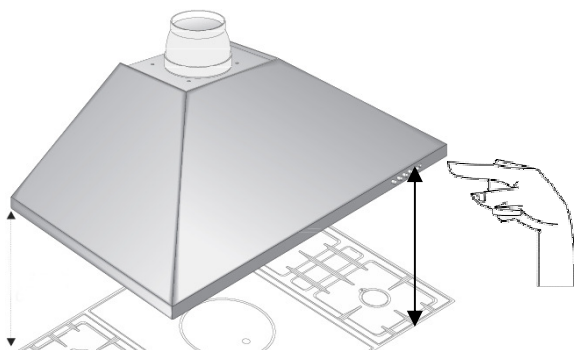
3 controls = higher setting 1 control = lower setting

Depending on the intensity of the cooking vapors, levels 1 to 2 are usually sufficient for normal cooking.

- Press the 0 control to switch the fan off.

The indicator lamp will go out.

Fitting Instructions Applies To All Wall Mounted Hoods



1

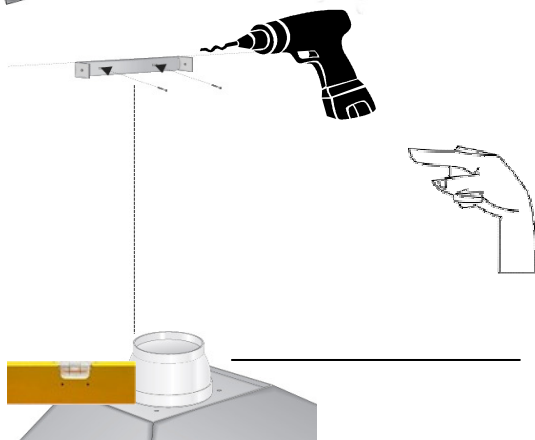
Position the cooker hood body directly above your hob, make sure that you comply with the minimum height regulations set out on page 10 and 12



2

Secure the main body of the hood to the wall. Make sure that the fixings are adequate for the type of surface you are fixing to.

Luxair provide some screws but they may need changing depending on the type of wall you have, if you are in any doubt then seek professional advice.



3

Measure the desired height of your chimney sections. Measure the center of the main body section of the hood and then draw a straight vertical line, place the metal u shaped bracket at desired height center to your line and secure the bracket to the wall.

Fitting Instructions Applies To All Chimney Wall Hoods

4

Mark the height and position of your ducting hole; this should be a minimum distance from top of the hood to the center of your hole 400mm, (see page 11).

Remove the hood of the wall before drilling the ducting position; this will stop any debris from falling into the fan housing and avoid any damage.

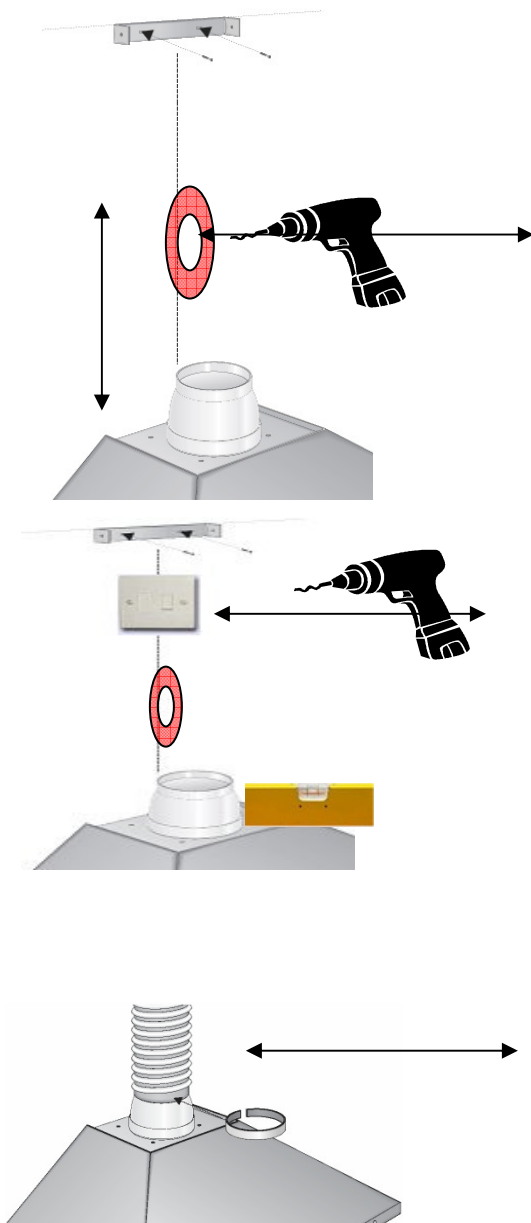
5

Mark the height and position of your fused spur socket position this so it's accessible, this should also be fused with a 13amp fuse.

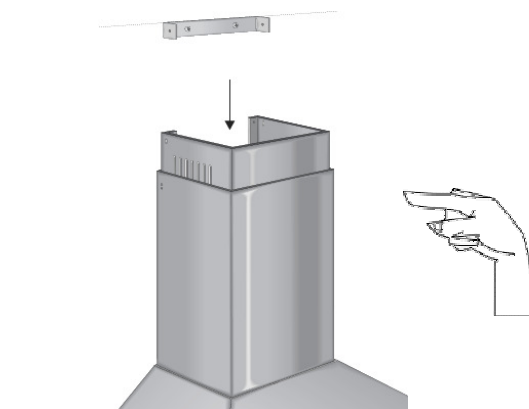
Remove the hood of the wall before drilling for the electrics.

6

Remount the body section to the wall and proceed to make all electrical and ducting connections, make sure you have complied with all safety instructions as set out on page 3-11.



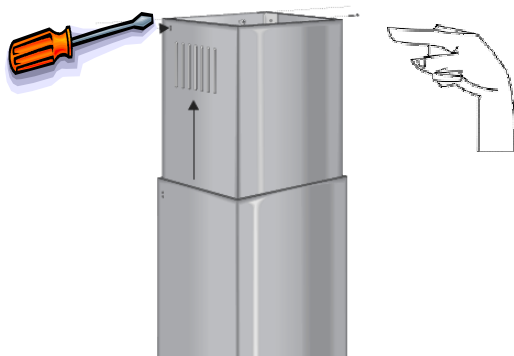
Fitting Instructions Apply To All Wall Mounted Hoods



7

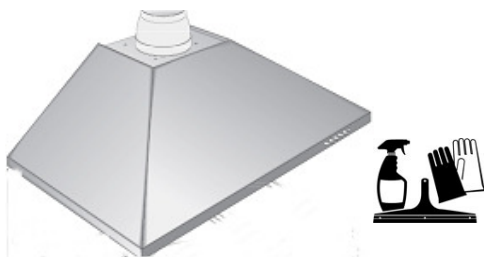
Once all electrical and ducting has been connected and tested proceed to assemble the chimney sections, place the bottom part of the chimney into the body of the hood, no fixings are required as the grooves secure this part, slide the top section into the bottom section of the chimney, taking care not to scratch this as you do so.

The vented top section can be turned upside down if the hood is ducted outside, this will hide the vents that are unnecessary for ducted out use. See page 12 for more details on vented or recirculated options.



8

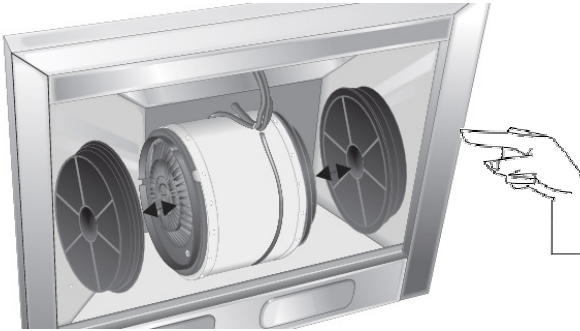
Slide the top section into place over the wall bracket, take care not to scratch this as you do so, and secure the top section to the bracket with the two short screws provided. Your new hood is now ready for



Warning

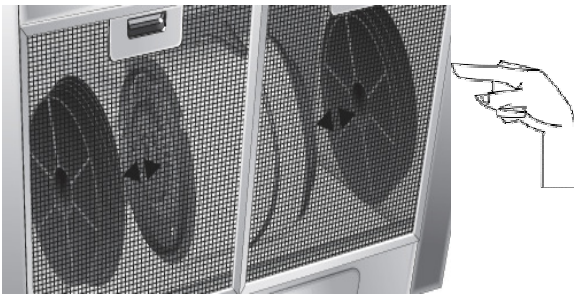
Do not attempt to clean down your new hood until you have read the cleaning instructions on pages 41 and 42. Careless cleaning could bur and scratch your new hood.

Fitting The Charcoal Filters



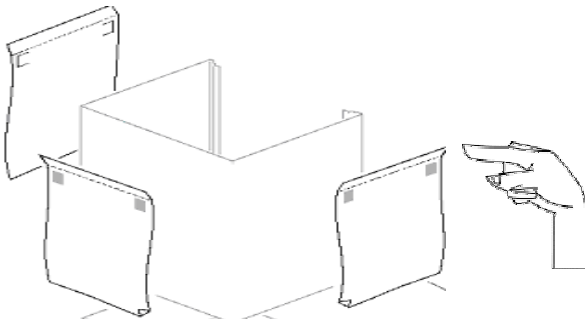
9

If it was not possible to extract you new hood to an outside wall you must now fit this cooker hood with charcoal filters, failure to do so will void the warranty, filters must be changed at least every two-three months, this appliance must not be used without filters if not ducted to an outside wall. See page 10.



10

Metal grease filters are designed to last the life of your hood and can be purchased direct from Luxair should they become damaged. These filters can be cleaned in your dishwasher in the upright position or by hand washing in soapy hot water only.

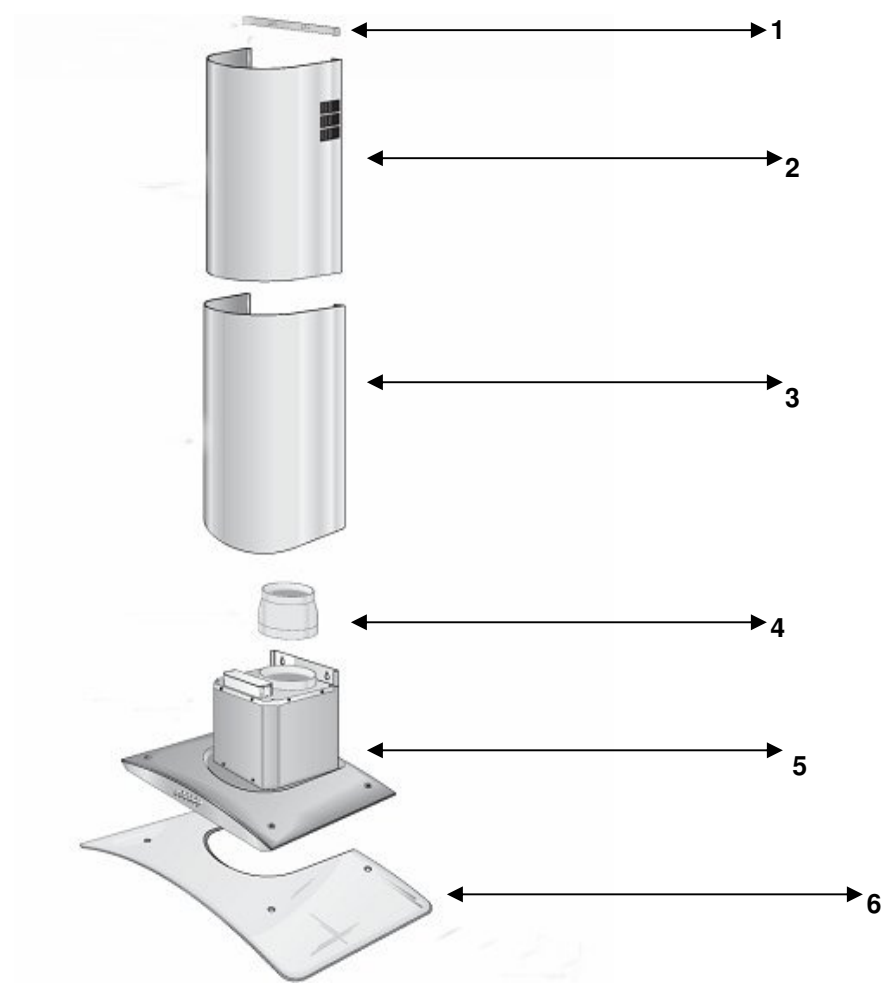


11

Remove all the protective film taking care not to damage your new hood.

**Curved Glass and Straight
Glass Wall Mounted Units**

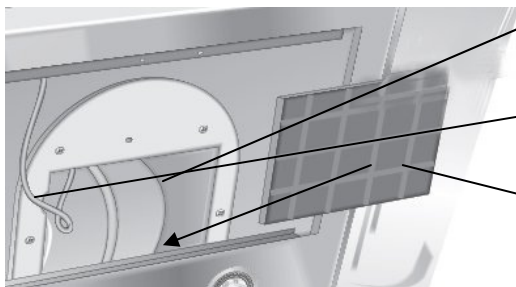
CVD-ST MODELS



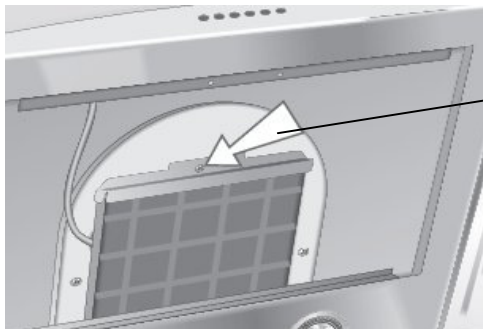
CVD-ST Wall Mounted Models

1. Wall Bracket
 2. Top Chimney Section
 3. Bottom Chimney Section
 4. Reducer Collar
 5. Body Section
 6. 8mm Safety Glass
 7. Fixing Screws
-

Fitting the charcoal filter:



- 1
Remove the metal grease filter to reveal the inner flue section.
- 2
Make sure all wires are pushed to one side preventing snagging.
- 3
Offer the filter to the bottom and back the flue section and insert into back L-shaped bracket.

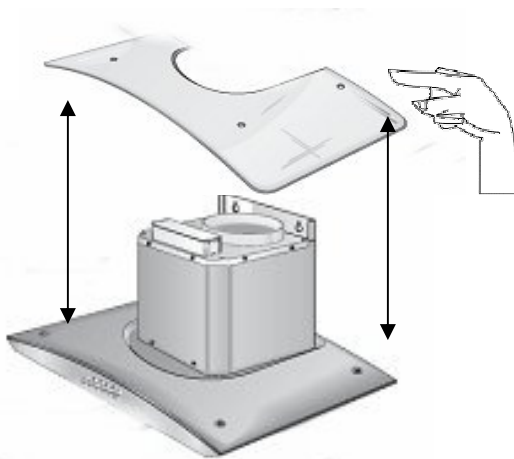


Push the filter into place and secure with the front screw as opposite.
Please note that the filters are only necessary for hoods that are not vented to an outside wall and must be replaced every 50 hours or two- three months.

Glass Wall Mounted Units.

Follow Fitting Instructions

1- 9 on Pages 18-20

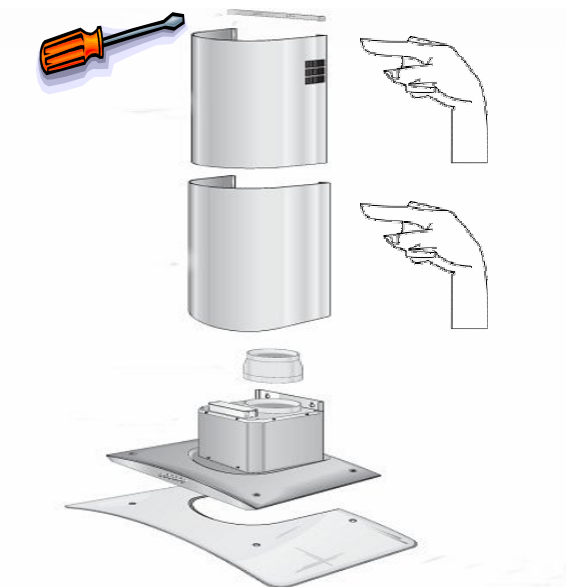


1

After following instructions 1-9 on pages 18-20 continue with this section for the rest of the fitting of this hood.

Once the hood is assembled and checked, place your glass directly on top of the main body section, line up with the screw holes and secure with screws and washers.

Warning: do not over tighten these screws, they should be hand tight only. Over tightening may cause the glass to break.

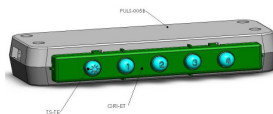


2

After fitting the glass, now fit the two telescopic chimney section, please ensure that you do this with care, slide the top section up to the fixing bracket, and secure with the two small screws in the fixing kit.

Operating your hood:

Electronic switches



1: select speed one to activate your fan, then speed 2 and so on.



2: to turn on the lights press the light switch.



3: The T button is a timer switch, when presses the T button will start to flash! This means you have activated the timer unit, your hood will turn its self of after 20mins, to cancel this simply press the T button again.



4: if the light button starts to flash, simply press and hold it for 5 seconds to deactivate it.



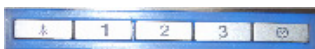
1: select speed one to activate your fan, then speed 2 and so on.



2: to turn on the lights press the light switch.



3: The clock button is a timer switch, when presses the clock button will start to flash! This means you have activated the timer unit, your hood will turn its self of after 20mins, to cancel this simply press the T button again.



4: you can turn off the led blue surround light simply by pressing and holding speed 1, make sure you have not activated the fan in order to do this, to turn it back on simply repeat the above process.

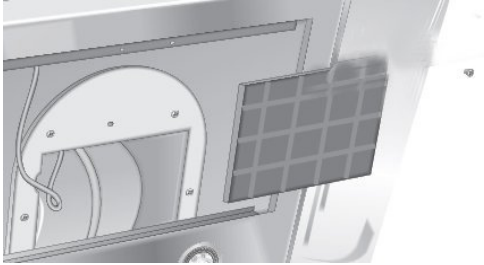
Octagonal Wall Units

Follow Fitting Instructions

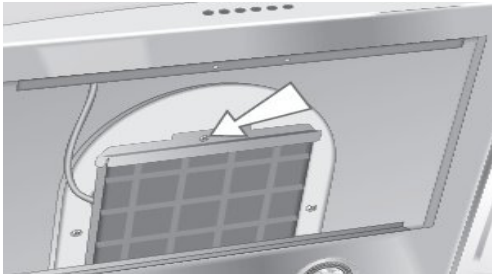
1- 9 On Pages 18-20



Fitting the square filters



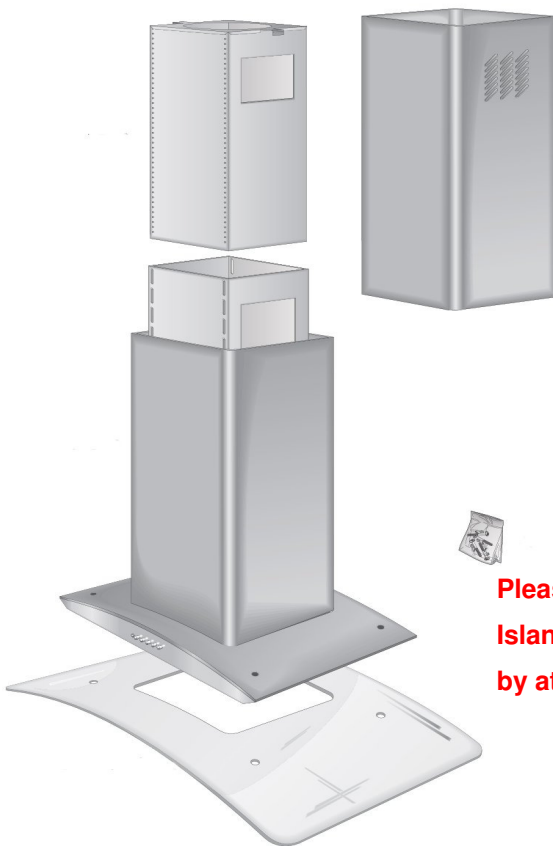
- 1
Remove the metal grease filter to reveal the inner flu section.
- 2
Make sure all wires are pushed to one side preventing snagging.
- 3
Offer the filter to the bottom and back the flu section and insert into back L-shaped bracket.
Secure the front of the filter using the screw as diagram below.



Installation All Island Hoods

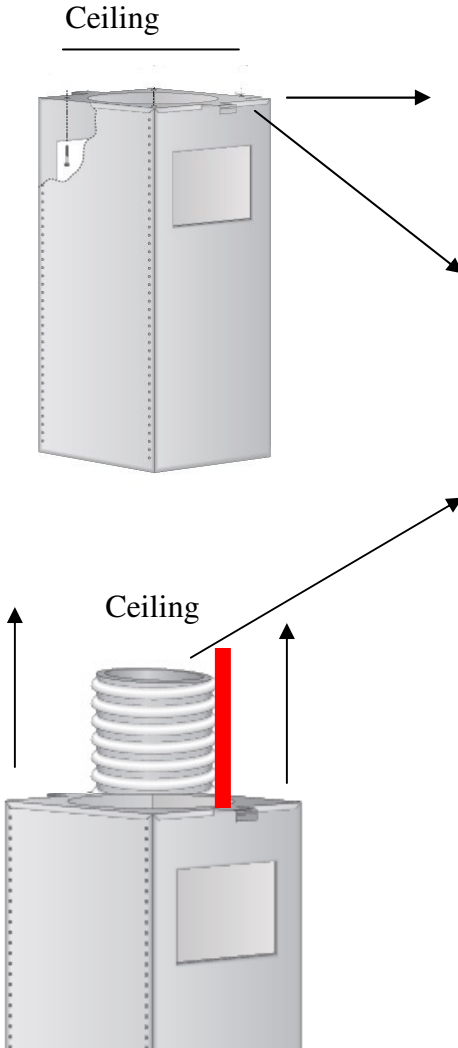
Please note: All Luxair Islands are installed in exactly the same manner and it is only the shape and design that differ, please use the following steps for all Island unit models.

**Octagonal, Curved Glass,
Straight Glass, Oval And Black**



**Please note that the installation of all
Island hoods should be carried out
by at least two people.**

Installation All Island Hoods



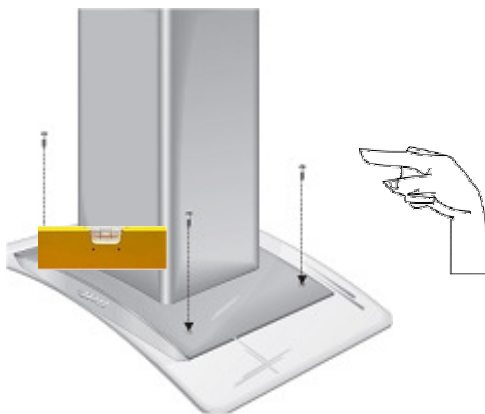
1:
Position the inner top section of the upper arm directly on the ceiling and above your hob and mark the center hole, also mark fixing positions. Make sure you are center to your hob.

2:
Make sure that your fixings will hold at least 75kg in weight; this must also be flush with the ceiling. Drill a 150mm hole in the ceiling and connect your ducting, run it to the outside wall, this must not exceed 4mtrs in length.

3:
Pass the ducting hose and electrical cable through the center hole of the top inner arm. Proceed to secure the arm to your ceiling using either coach screws (provided) or coach bolts (not provided). It is paramount that these fixings are strong enough to hold the weight of the hood.

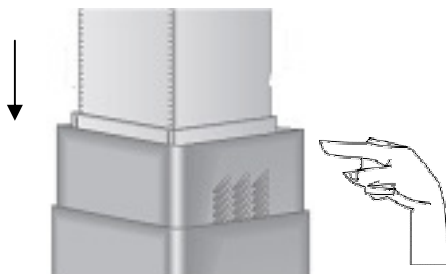
Warning:
All Island hood must be flush mounted and under no circumstances must the chimney be inset into the ceiling void.

Installation All Island Hoods



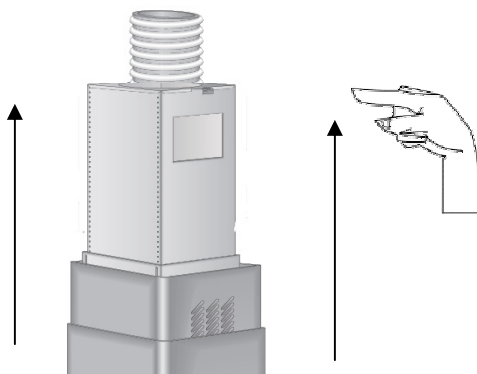
4:

Before you go any further assemble the glass (applicable to glass units only) over the main body of your hood and secure with screws and washers (provided). Do not over tighten these screws as you may cause the glass to shatter.



5:

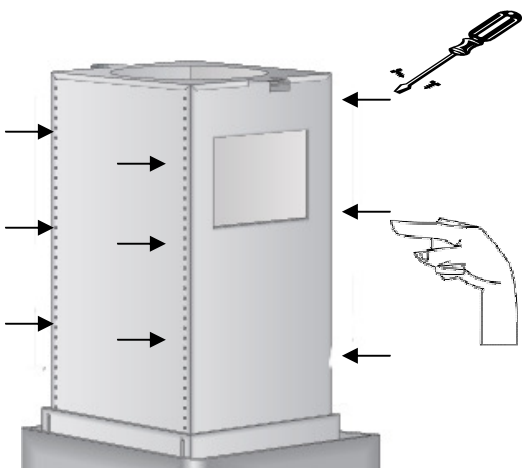
Insert the top stainless steel chimney section into the bottom stainless steel section; take care not to force this as you may cause damage.



6:

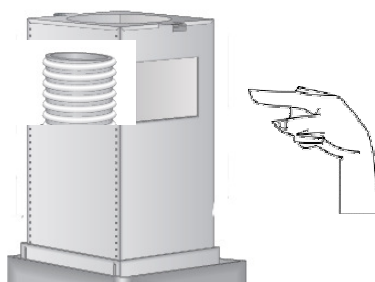
Lift the whole unit up onto the main pre fixed upper inner arm, slide it up or down to correct height, make sure that you have allowed the minimum height above your hob unit.

Installation All Island Hoods



7:

When you have selected the correct height above your hob secure the inner bottom section of the flue, to the inner top section of the flue in the fixing positions as opposite. Your cooker hood should now be secure.



8:

Make all final ducting and electrical connections through the specially cutout hole. Test that all ducting and electrical connections are working before completing the final part.



9:

Finally, lift the bottom outside stainless steel section upwards, (take care not to scratch this section), and secure to the two top mounting brackets with screws (provided).



See cleaning instructions on page 42 and 43.

Changing The Bulbs

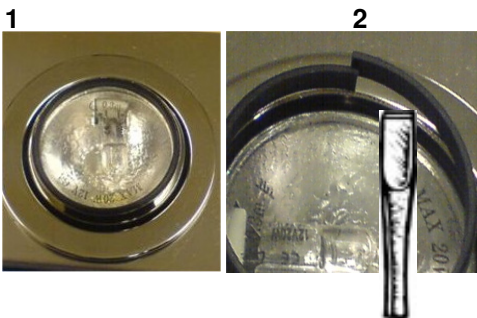


We at Luxair are constantly modifying and upgrading our products it is therefore recommended you check your appliance to identify the type of light fittings installed.

Warning:
Please make sure that the appliance is disconnected from the mains supply before carrying out any maintenance work or cleaning. Never attempt to remove the light fitting from your hood as all bulbs are replaced from the outside of your hood, unless otherwise advised.



Ball Lights



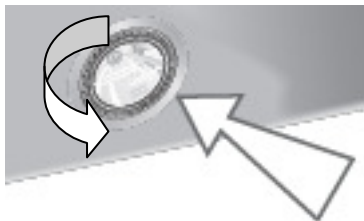
Removing the bulb, see fig 2:

Use a small screwdriver to remove the black plastic ring from the face of Light holder, once this is removed the glass face will come lose, take care not to drop this, remove the old bulb and replace with 20w halogen 2 pin bulb. Do not touch the bulb with your fingers as this may cause it to fail, use a piece of tissue to insert your new bulb.

Bulbs are not covered by warranty and can be purchased from all major Diy stores or your local electrical retailer.



Surface lights



Never try to remove the light fitting from your hood, to remove the bulb twist the metal ring anticlockwise, the metal ring and the glass will fall loose take care that you do not break the glass, replace with a 20w halogen bulb, never touch the bulb with your fingers, use a tissue, replace the glass and metal ring securing it in the clockwise position.

When replacing a defective lamp you should use exactly the same type of bulb (see "Technical data" for lamp specification).

Screw Bulbs

Remove the metal grease filters from your hood to expose the light fitting located at the back of your hood,(this only applies to standard hoods)



Twist the bulb anticlockwise to remove, replace with a 20/40 w max screw bulb.

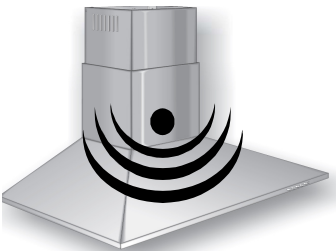


Before You Call Us

Below are a few checkpoints you need to carry out before you call us; unnecessary phone calls can be avoided by checking before you call, Please note that Luxair cannot be held responsible for incorrect installation of the ducting system, any problems relating to this matter must be taken up with the person or persons who installed your hood.

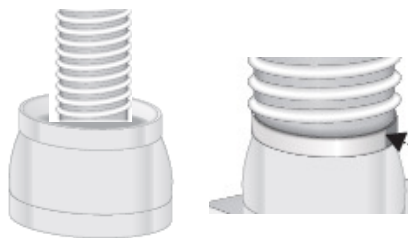
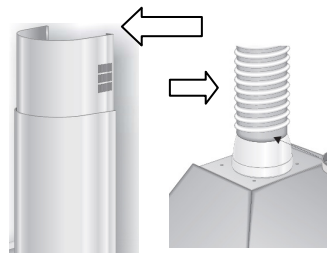
1:

The most common calls are related to vibration and noise, please check the following to help you eliminate this problem.



2: Remove the chimney section to your

Hood, revealing the connected ducting system.



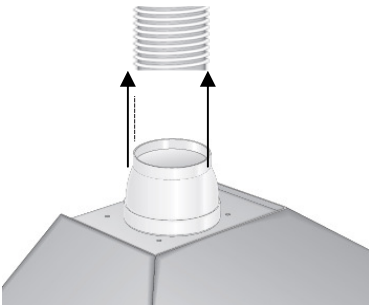
3: Check that the hose fits over the outside of the plastic collar.

If the ducting is connected to the inside of the collar this is incorrect and must be replaced with 125mm duct.

Luxair are not liable for incorrect ducting or installation problems.

Before You Call Us (Ducted Hoods)

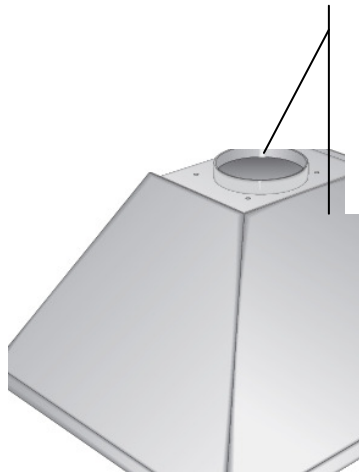
4: To be 100% sure if the ducting is causing the vibration and excess noise levels disconnect it!



5: After disconnecting the ducting pipe via the collar (as above) switch the cooker hood back on, has this now stopped the vibration and noise? If yes, then you need to contact the person who installed your hood. Luxair are not responsible for ducting problems.

6: When all the above checks have been carried out and you are still experiencing vibration check that the inner flaps at the top of the motor housing are not obstructed by fallen

Debris from installation.



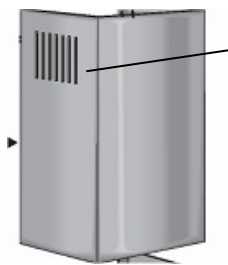
Check for debris in this part of your hood and that the airflow is clear.

Check that the hood is correctly mounted on the wall and has at least four fixing screws.

6:
Please note that extra noise levels can be a problem when the hood is mounted onto a stud or partition wall, the hollowness of these type of walls echo the sound thus increase noise levels.

Before You Call Us (Non Ducted)

If your cooker hood is not ducted to an outside wall and you are experiencing vibration, then please check the following.



Make sure that the top chimney with vent section has been installed on all none ducted hoods.

Purify the air; they also help to prevent grease build up on the motor fan blades.

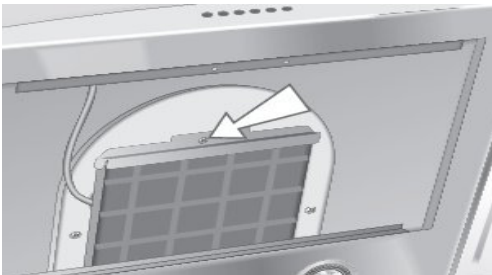
Round



Charcoal filters must be used with all non-vented out hoods.

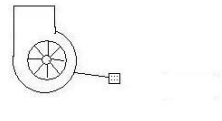
The above chimney section must be used when it is not possible to extract to an outside wall, this is necessary as the vents allow the air flow back into the room, if this section has not been used then contact the person who installed your hood and correct the problem.

Square



Please note that in conjunction with none ducted hoods; you must fit charcoal filters in the hood, these help to eliminate bad odors and

Please Note:
When using charcoal filters the extraction rate will be 1/3 less than ducted out hoods.



Before You Call Us (poor Extraction)

Poor extraction is caused by a number of reasons, below are some tips and hints to help eliminate such problems.

Ducting can cause poor extraction if, the ducting is run too far, over the recommended 3.5mtrs. 5.5 mtrs on island hoods

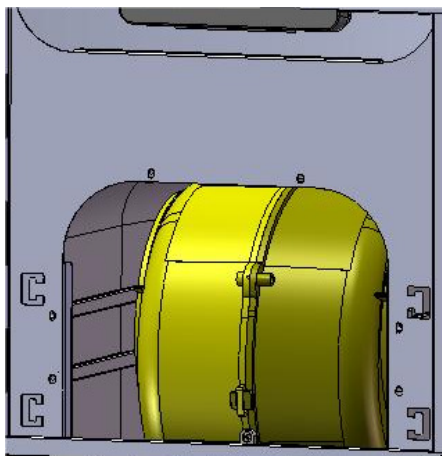
this can also add to vibration if the vertical lift is higher than 2.5mtrs, air becomes heavy and caused a down fall or return, thus

Causing the motor to reverse and vibrate.

If your ducting has too many bends or elbows this can also cause poor extraction rates, please note that every time you use an elbow or bend in the ducting run, you will lose up to a third 1/3 of its extraction rate per elbow. Try to avoid too many bends.

Pleas note:

Luxair install motors as stadered 650 cbm ph motors, in most domestic installations this is suffice, however we will provide at an extra cost a higher extraction motor of 850 cmtr if you require a higher extraction rate.



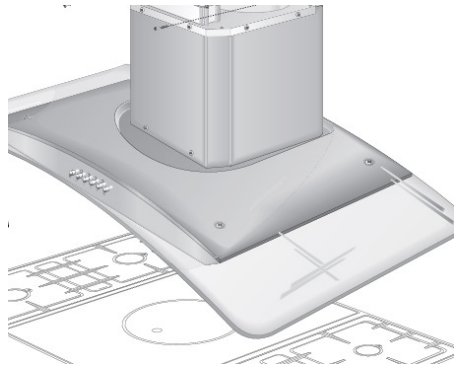
This will not include the cost of installation and will be charged as an extra. For advise please call our sales advise team on further information.

Before You Call Us (poor Extraction)

Turn the hood on at speed 1, Take an A4 piece of paper and place it flat on your hand, then offer it up to the metal grease filters, place the paper Up against the filters and remove your hand, the paper should stay in place, if it does not then you need to check the ducting or call the person who installed the hood.

Never install Luxair hoods with ducting smaller than 125mm, if you are replacing an existing extractor, never use the old ducting system previously installed, they are more often than not only 100mm in size and could be damaged your new hood, they are also unlikely to be flame retardant. This will also cause problems not only with extraction, but also with vibration.

Cooker hoods will only remove 60% of the steam or vapors when Cooking, they do not extract all Vapors the minute the extractor is Turned on, a vortex is created in the room thus allowing it to clear all vapors usually within one hour.



Before calling us, please take note of the points set out in this manual, if you are in any doubt then please seek professional qualified assistance.

Before You Call Us (Remote units)

Remote Control Hoods

- 1:** stand 6-10 feet from your chimney hood and point the remote at the chimney section of the hood.
 - 2:** to operate the lights press the first blue button, lights on, press again lights off
 - 3:** to operate the motor, press the second blue button (top right) this will operate speed one only.
 - 4:** To operate speed 2, press the third blue button once (bottom right).
 - 5:** To operate speed 3, press the same blue button once again, this will operate speed three.
- Please note: that the red indicator light at the top right hand corner should illuminate at each press of any button, if this dose not illuminate then you should replace the battery.
- 6:**To replace the battery clip the back cover off, remove old battery and replace with a 12v alkaline battery only. Please also note that batteries are not covered by warranty and may need changing even if the unit is new.

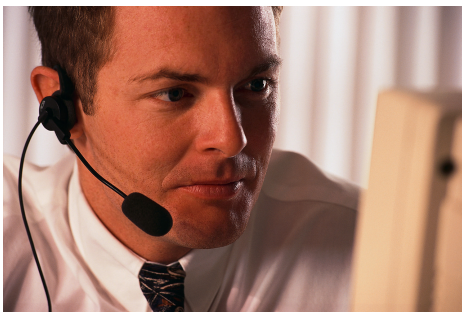


warning

Please note: Remote control hoods are not suitable for all areas as they are operated by Microwaves, the operation of your hood can be affected in areas where there are high levels of Microwaves, i.e. near Airports, Police stations or any environment that has high microwave activity. Luxair cannot be held liable for units that are affected by this. If in doubt seek advice.

Luxair Help Line UK

We at Luxair are here to help, if you need any assistance or advise on installing your new hood, please call our UK help line.



Help line

0044 (0) 1765 641888

Fax Us

0044 (0) 1765 641889

E mail

info@luxairhoods.com

Web

www.luxairhoods.co.uk

www.luxairhoods.com

All calls are charged at local rate:

NOTES:

Cleaning And Care



Before carrying out any cleaning or maintenance work, disconnect the cooker hood from the mains supply.

Ensure that:

- it is switched off at the wall socket and the plug withdrawn, or
- the fuse is withdrawn from the fused spur connection unit, or
- the mains fuse is withdrawn, or
- the screw-out fuse is removed (in countries where this is applicable).

General notes

The surfaces and controls are susceptible to scratches and abrasions. Please observe the following cleaning instructions.

- All external surfaces and controls can be cleaned using a Luxair E-Cloth, or with warm water and a little washing-up liquid applied with a well wrung-out soft sponge or cloth.
- Wipe the surfaces dry using a soft cloth.

Do not use too much water when cleaning the controls. Water could penetrate into the electronics and cause damage.

Do not use:

- Cleaning agents containing soda, acids, chlorides or solvents,

- Abrasive cleaning agents e.g. powder cleaners or cream cleaners, and abrasive sponges, e.g. pot scourers or sponges which have been previously used with abrasive cleaning agents. These will damage the surface material.

Important for appliances with stainless steel housing

(This information does not apply to the controls).

Stainless steel surfaces can be cleaned using the Luxair E-Cloth, or with a proprietary non-abrasive cleaning agent designed specifically for use on stainless steel.

To help prevent re-soiling, a proprietary conditioning agent for stainless steel such as baby oil or olive oil can also be used. Follow the manufacturer's instructions, and apply sparingly with an even pressure in the direction of the "grain".

Controls

The controls may suffer discoloration or damage if soiling is left on them for too long.

Remove soiling straight away.



Never spray cleaning products directly at the control or switch panels.



Please observe the General notes on cleaning.

Do not use stainless steel cleaning agents on the controls.

Glass surfaces

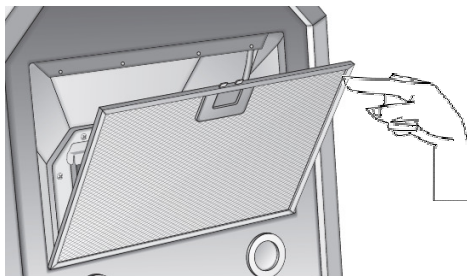
Glass surfaces can be cleaned using a proprietary non-abrasive cleaning agent designed specifically for use on glass.

Avoid oven sprays.

To avoid damaging the filter or the hob below, make sure you hold the filter securely at all times when handling it.

To remove the Grease Filter.

Pull the plate down towards you at the top, push the bottom slightly to the right and pull forwards to remove (see illustration).



Cleaning the grease filter by hand

- Clean the filter with a soft nylon brush in a mild solution of hot water and a little washing-up liquid.
Do not use "neat" washing up liquid.

Do not use:

- Cleaning agents containing descaling agents,
- Alkaline cleaning agents (with a pH value higher than 7), such as powder cleaners, cream cleaners or abrasive all-purpose cleaning agents,
- Oven sprays.

Cleaning the grease filter in the dishwasher

- Place the filter with the short side upright in the lower basket, and wash on a 65° programme using a mild Dishwasher detergent; ensuring the spray arm is not obstructed.

Avoid alkaline dishwasher detergents (with a pH value higher than 7).

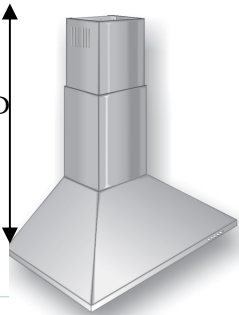
Depending on the cleaning agent used, cleaning the filter in a dishwasher can cause permanent discoloration to the surface. However, this will not affect the functioning of the filter in any way.

- After cleaning, leave the filter to dry for a while on an absorbent surface before putting it back in place.

Luxair Hood Size Charts

The following size chart shows all cooker hoods sizes as they are packed in there boxes from our factory, however they can be cut down to a lower height if required, please take great care if you attempt this and please refer to pages 10 for further instructions on this procedure.

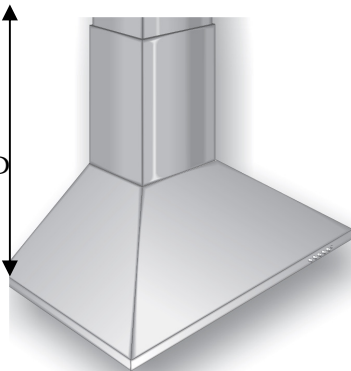
MAX
STD HOOD
1020mm



MODEL CODE	DISCRIPTION	ALL SIZES	Min Height	Max Height	CAN BE CUT BY A FURTHER
LA-60 -1100 STD	CHIMNEY HOOD SS/ BLACK	60 CM -1100 CM	790mm	1020 mm	200mm
LA-60 - 1100 CVG GLASS	CURVED GLASS SS/ BLACK/BLUE	60 CM -1100 CM	700mm	950mm	200mm
LA-60 - 100 OC	OCTAGONAL HOODS SS	60 CM -100 CM	800mm	1100mm	200mm
LA-60 - 90 RND	ROUND FRONT HOODS	60 CM -90 CM	820mm	1150mm	200mm
LA-60 - 90 ST GLASS	STRIGHT GLASS HOODS	60 CM - 90 CM	700mm	950mm	200mm
ISLAND HOODS					
LA-90-CVD-ISL	CURVED GLASS ISLAND SS	90 CM	790 mm	960 mm	200mm
LA-90-CVD-BLK-ISL	CURVED GLASS ISLAND BLACK/BLUE	90 CM	790 mm	960 mm	200mm
LA-90-OVL-ISL	OVAL ISLAND HOOD SS	90 CM	790mm	890 mm	200mm
LA-90-OC-ISL	OCTAGONAL ISAND HOOD SS	90 CM	880 mm	1040 mm	200mm
LA-90-ST-ISL	STRIGHT GLASS ISLAND HOOD SS	90 CM	800 mm	890 mm	200mm
LA-70-CVD-ISL	CURVED GLASS ISLAND SS	70 CM	790 mm	960 mm	200mm

Luxair cannot be held liable for damage caused by cutting or altering the above standard heights, cutting or altering the above hoods is done so at your own risk. Should you require replacement parts due to damage please call our help line on page 40.

MIN
STD HOOD
790mm





Electrical Connections

All electrical work should be undertaken by a suitably qualified and competent person in strict accordance with current national and local safety regulations (BS 7671 in the UK).

Installation, repairs and other work by unqualified persons could be dangerous, for which the manufacturer cannot be held liable.

Ensure power is switched off to the appliance until after installation or repair work has been carried out.

Do not connect the appliance to the mains electricity supply by an extension lead. These do not guarantee the required safety of the appliance.

When switched off there must be an all-pole contact gap of 3 mm in the switch (including switch, fuses and relays according to EN 60335).

If the switch is not accessible after installation (depending on country), an additional means of disconnection must be provided for all poles.

For extra safety it is advisable to install a residual current device (RCD) with a trip current of 30 AMP.

Important

U.K., IRL, NZ, ZA: This appliance is supplied for connection to an a.c. 230 V single phase 50 Hz supply.

AUS: This appliance is supplied for connection to an a.c. single phase 240 V, 50 Hz supply.

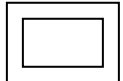
The connection data is given on the data plate. This is visible when the grease filters have been removed. Ensure that this data matches the household mains supply.

Connection of this appliance should be made via a suitable isolator or a double pole fused spur connection unit which complies with national and local safety regulations and the On-Off switch should be easily accessible after the appliance has been built in.

The wires in the mains lead are colored in accordance with the following code:

Blue	= neutral
Brown	= live

This appliance is double insulated



Technical data

Total connected load* 240 W
– Fan motor* 200 W
– Hood lighting 2 x 20W
Halogen lamps
Osram type 44888 WFL, 20 W
Voltage
UK, NZ, ZA AC 230 V
AUS AC 240 V
Frequency 50 Hz
Fuse rating (UK) 13A
AUS, NZ:
Plug rating 13 A
Test marks Electrical safety
..... C-Tick Mark
Electrically suppressed
according to AS/NZS 1044

Electrical cable length 1.5 mtr

Decibel ratings

Noise Level Min/Max (CBM/H) applies to wall mounted hoods	Speed 1 = 37.5DB Speed 2 = 46.9DB Speed 3 = 56.9DB
--	---

**Fan performance wall mounted
hoods**

Extraction power according to
EN 61591
Extraction system Ø 150 mm:
Level I 200 m³/h
Level II 300 m³/h
Level III 650 m³/h
Extraction system Ø 125 mm:
Level I 180 m³/h
Level II 280 m³/h
Level III 550 m³/h
Unrestricted 680 m³/h

* For EXT models, the connected load
and extraction power will depend on
the type of external motor fitted.
EXT models:
Length of connection cable to external
motor 1.9 m

Fan performance Island Hoods

Extraction system Ø 125 mm:
Level I 280 m³/h
Level II 380 m³/h
Level III 800 m³/h
Unrestricted 890 m³/h

Name:

*

Contact Name:

*

Phone Number:

*

Mobile Number:

*

Email Address:

*

Postal Address:

HOUSE NAME OR NUMBER:

*

ADDRESS:

*

TOWN OR CITY:

Postcode

*

Serial Number:

*

Model Number:

*

Please note: this box must have the correct serial number and model number in order
To activate your warranty, this form must also be returned to Luxair within 31days
After installation.

Purchase Details:

Purchased From:

*

Date Purchased:

*

See back page for address details.

Lux Air Policy

Lux Air operates a policy of continuous improvement and reserves the right to adjust and modify its products and prices without prior notification. All the Operational Extra Kits can be purchased if required
PLEASE NOTE: All ducted out hoods must use a five-inch (5") ducting, failure to do so will result in the warranty being void. In addition, all hoods must be surface mounted and free from obstructions.

The information is provided on the understanding that the website is not engaged in rendering legal advice. Further more no liability can be accepted for loss or expense as a result of using this website. By using the Website you agree that in no circumstance shall The Company be liable for any indirect, incidental, special or consequential damages, including, but not limited to, loss of business or profits or any other financial loss, arising out of or in any way connected with the use of the Website, under any law or on any basis whatsoever whether contractual or otherwise.

Luxair will not accept returned goods for credit if purchased by you in error, we will refund in full or replace damaged or faulty goods only if installation has not taken place, goods that have been installed and found to be faulty must be treated as a service call and it is up to you the purchaser to instigate the service call Goods damaged by incorrect installation procedures or by an unqualified electrician will not be exchanged or replaced however spares can be purchased at an additional cost to you to help rectify the situation.

Service call check list Before calling our service departments please ensure that the following checks have been done: 1, all electrical connections have been installed by a qualified electrician and that a fused spur has been installed for safety. 2, ducting used must be 125mm minimum, filters and accessories have been installed correctly as per the instruction manual. 3, please note if the appliance is found to be a faulty or inadequate installation you will be charged for the call out and parts needed to rectify the problem. Your statutory rights are not affected.

The information is available on the Website are provided on an "as is" basis without any representations or endorsements made and without any warranty of any kind whether express or implied, including but not limited to implied warranties of fitness for purpose, merchantability and accuracy.

Nothing contained in the Website is intended to constitute legal advice of any sort, and the basis on which you acquire or make use of any information or document is that the information or technical advise is suitable for use by you in conjunction with proper advice as to its application and adaptation for your particular requirements. We will not have any liability to you at all if you use any information or advise without obtaining appropriate legal advice nor will we have any responsibility at all for any alterations made to the appliance after you have received it.

Your statutory rights are not affected.



Lux Air UK,
Lux Air House,
Unit 2 & 5, Keld Close
Barker Business Park,
Melmerby,
Ripon
North Yorkshire
HG4 5NB

Telephone: 0044 (0) 1765 641888

Fax: 0044 (0)1765 641889

Help Line. 0044 (0) 1765 641888

Email: info@luxairhoods.com

Web: www.luxairhoods.com