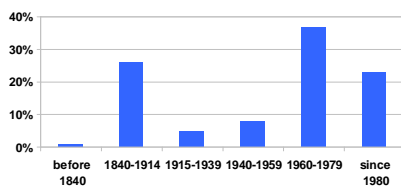
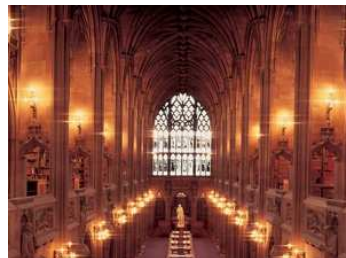


## Estate Overview

- Academic and support estate (excluding residences) predominantly freehold (98%)
- 250 buildings
  - Largest university estate in UK HE sector<sup>1</sup>
  - 711 acres/288 hectares
  - 886,000m<sup>2</sup>
  - £3bn insurance replacement value
  - Age profile



<sup>1</sup> Built square meterage per HESA Estate Management Statistics 2013-14



3

## Estate Overview

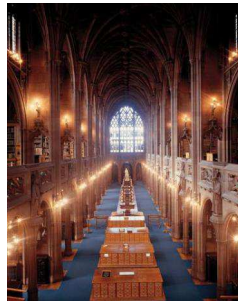
- State of the art facilities across many areas
- 58% academic estate research
- 42% academic estate teaching
- Nationally important research facilities





## Estate Overview

- Significant heritage
- 24 Listed buildings including:
  - Whitworth Art Gallery
  - Manchester Museum
  - Lovell telescope
  - John Rylands Library, Deansgate
  - Old quadrangle buildings



## Recent Investment

- Biggest capital programme in the history of Higher Education in the UK following 2004 merger
- 14 new buildings and many refurbishments
- Awards winning developments - RICS Property Management of the Year Award for Strategy and Delivery
- Improved condition
  - 2004/05 - 44% A/B
  - 2013/14 - 73% A/B



## Campus Masterplan Key Drivers

- 2020 Vision enabler
- Transformational
- World-class campus
- Market position
- Single site
- Co-location of disciplines
- State of the art facilities
- Excellent student experience
- Lower costs
- Reduced carbon footprint
- Address deteriorating stock



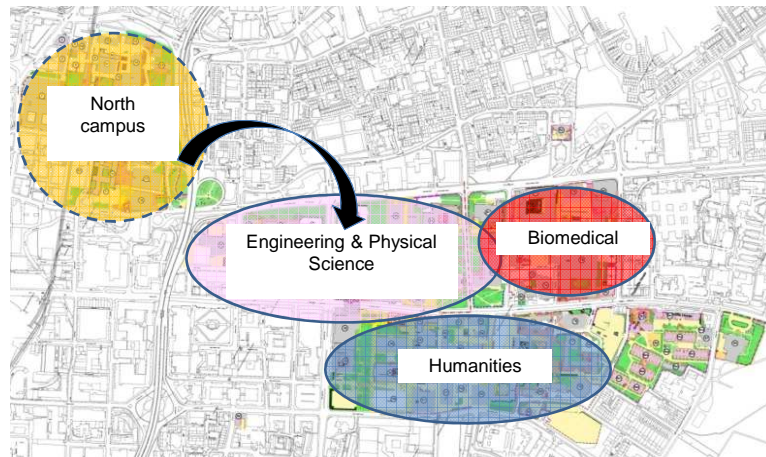
## Estates Strategy 2012-2022

### North Campus move

- Opportunity to create world leading engineering facilities
- Single University on single site
- Close physical proximity contributing to interdisciplinarity
- Improve student experience
- Address key drivers
- Reduce cost base
- Reduce carbon footprint



## Masterplan



## Preserving our Heritage

### Old Quadrangle Conservation





The University of Manchester

## Transforming our Campus

### Alan Gilbert Learning Commons & Gilbert Square



The University of Manchester

## Phase 1 Major Projects - Completed

- National Graphene Institute - £61m
- Manchester Cancer Research Centre (MCRC) - £38m
- Whitworth Art Gallery - £17m
- Dover Street Decant - £1m
- Jodrell Bank Star Pavilion - £1m
- Vaughan House - £3m
- Simon Building Improvements (Phase 1) - £23m
- Photon Science Institute Multi-Disciplinary Characterisation Facility (MCF) - £3.6m
- A V Hill 5<sup>th</sup> Floor Fit Out - £4.2m

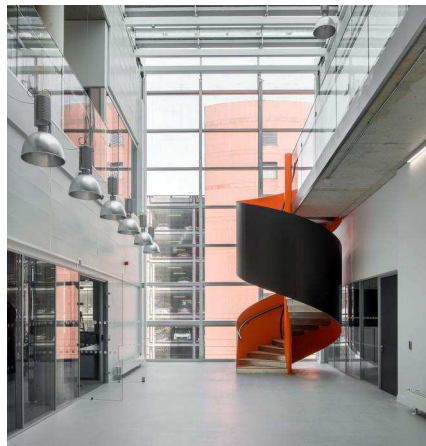




The University of Manchester

## Phase 1 - Completed Projects

### National Graphene Institute



The University of Manchester

## Phase 1 - Completed Projects

### Manchester Cancer Research Centre (MCRC)







## Phase 1 - Completed Projects

Whitworth Art Gallery



## Phase 1 – Completed Projects

Dover Street Decant



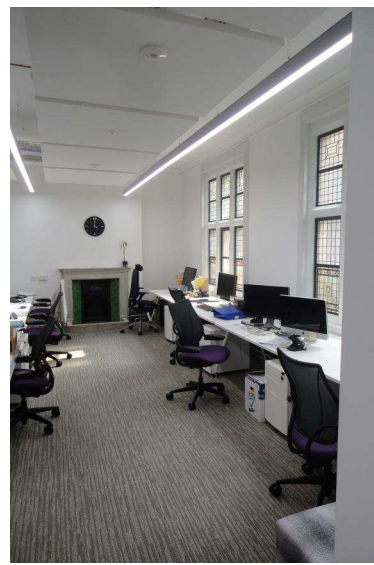


## Phase 1 – Completed Projects



## Phase 1 - Completed Projects

Vaughan House



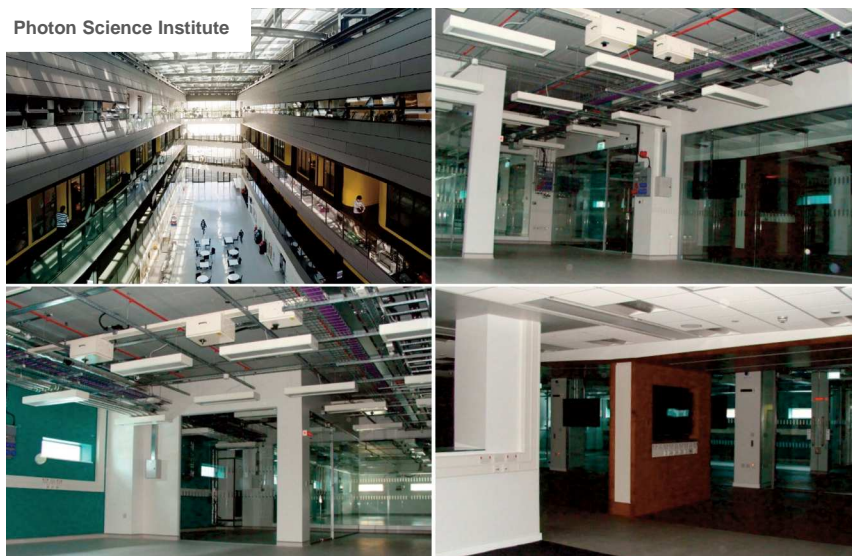
## Phase 1 – Completed Projects

### Simon Building Improvements – Phase 1



## Phase 1 - Completed Projects

### Photon Science Institute



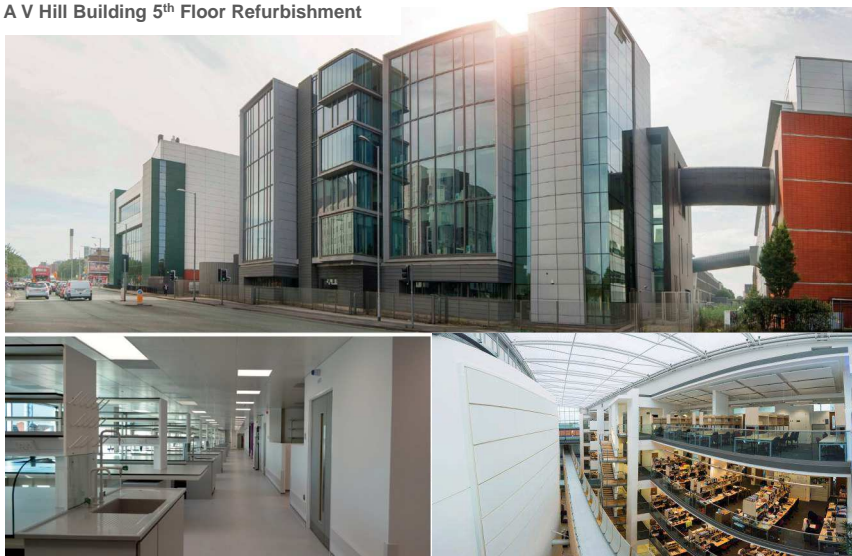




The University of Manchester

## Phase 1 - Completed Projects

### A V Hill Building 5<sup>th</sup> Floor Refurbishment

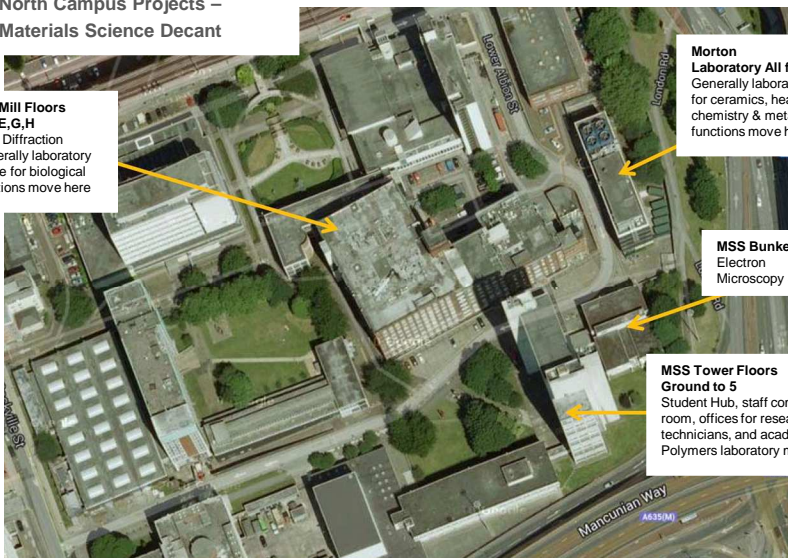


The University of Manchester

## Phase 1 - Completed Projects

### North Campus Projects – Materials Science Decant

**The Mill Floors  
A,B,E,G,H**  
Xray Diffraction  
Generally laboratory  
space for biological  
functions move here



**Morton  
Laboratory All floors**  
Generally laboratory space  
for ceramics, heat, thermal  
chemistry & metallography  
functions move here

**MSS Bunker**  
Electron  
Microscopy Suite

**MSS Tower Floors  
Ground to 5**  
Student Hub, staff common  
room, offices for researchers,  
technicians, and academics.  
Polymers laboratory move here



## Phase 1 - Completed Projects

### MBS Bridge



## Phase 1 Major Projects – In Construction

- Simon Improvement Project (Phase 2) - £23m
- Coupland 3 refurbishment - £35m
- Manchester Business School – Hotel, Executive Education Centre, refurbishment - £57m
- MECD Demolition & Enabling Works - £6m

## Phase 1 – In Construction

**Coupland 3 Refurbishment**



## Phase 1 – In Construction

**Manchester Business School Redevelopment**







The University of Manchester

### MECD Demolition

## Phase 1 – In Construction



<http://www.mecd.manchester.ac.uk/mecd-project/mecd-site-webcam/>



The University of Manchester

### MECD Demolition

## Phase 1 – In Construction



<http://www.mecd.manchester.ac.uk/mecd-project/mecd-site-webcam/>





## Phase 1 Major Projects – In Design

- Manchester Engineering Campus Development, including New Teaching Block - £350m
- Fallowfield Student Residences Redevelopment - £170m
- Graphene Engineering Innovation Centre (GEIC) - £60m
- Library refurbishment – £30m
- Schuster Building – new annexe extension - £11m
- Jodrell Bank – Lovell Telescope and Jodrell Bank Masterplan- £10m
- Samuel Alexander LTM and Space Rationalisation Project - £6m
- Students' Union – additional floor space and LTM works - £5.8m
- Combined Heat and Power - £7m
- Kilburn remodelling - £5m
- Brunswick Street Public Realm - £3m



# Manchester Engineering Campus Development

MECD  
The University of Manchester

[www.manchester.ac.uk/mecd](http://www.manchester.ac.uk/mecd)



The University of Manchester

The Manchester Engineering Campus Development (MECD) will be one of the single, largest construction projects undertaken by any higher education institution in the UK.

The new engineering campus will transform the way in which the University of Manchester educates future engineers in response to the needs of the fast-changing global economy.

www.manchester.ac.uk/mecd



### THE MECD VISION

- Investing in world-class research, teaching and learning
- Celebrating our identity – past, present and future
- Creating a vibrant, consolidated campus
- Providing a platform for industry and welcoming the community

### TOP FACTS

- £350 million investment
- The floor space will be more than 78,000m<sup>2</sup> (or 11 football pitches)
- 1,300 academics, researchers and support staff
- 6,750 students will be based at the new site
- Plus four engineering schools and two research institutes

[www.manchester.ac.uk/mecd](http://www.manchester.ac.uk/mecd)





## Connect with MECD

Website: [www.manchester.ac.uk/mecd](http://www.manchester.ac.uk/mecd)

Blog: [www.mecd-uom.tumblr.com](http://www.mecd-uom.tumblr.com)

Twitter: [www.twitter.com/@uom\\_mecd](https://twitter.com/uom_mecd)

Instagram: @uom\_mecd

Email: [askMECD@manchester.ac.uk](mailto:askMECD@manchester.ac.uk)

www.manchester.ac.uk/mecd

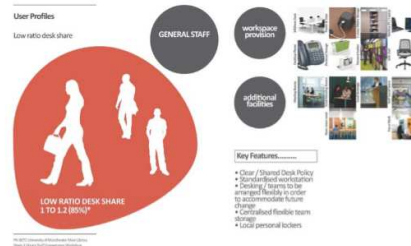
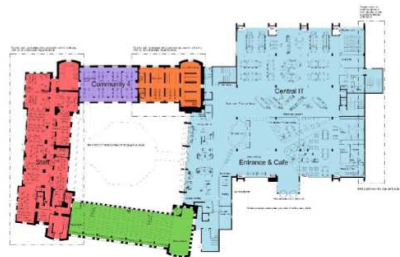
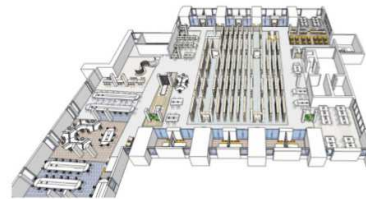
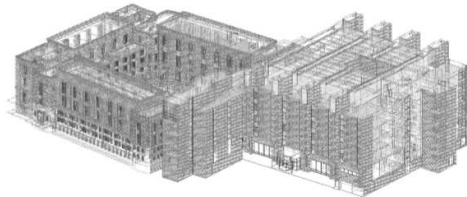
## Phase1 - In Design

### Graphene Engineering Innovation Centre (GEIC)



## Phase 1 – In Design

### Main Library Refurbishment





The University of Manchester

**Schuster Building – New Annexe Extension**

**Phase1 - In Design**



The University of Manchester

**Schuster Building – New Annexe Extension**

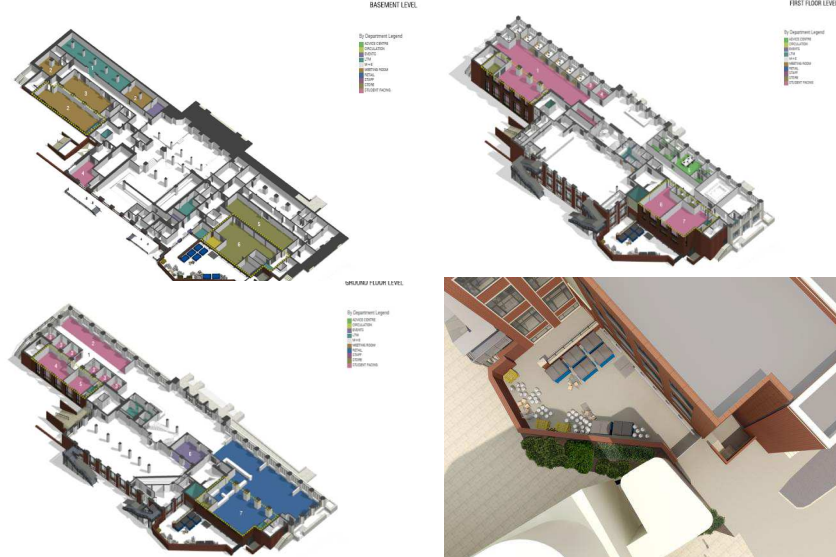
**Phase1 - In Design**





## Phase1 - In Design

### Students Union – Additional Floor Space and LTM Works



## Phase 1 – In Design

### Jodrell Bank – Lovell Telescope and Jodrell Bank Masterplan





**MANCHESTER 1824**  
The University of Manchester

## Phase 2 Major Projects

- Biomedicine strategy - £190m
- Chemistry - £20m
- Computer Science - £12m
- Physics - £6m
- Zochonis refurbishment to co-locate Psychology - £6m
- Additional floor in Arthur Lewis - £5m
- Williamson refurbishment - £4m
- Public Realm Projects - £4m

## Residential Strategy

- Three main locations
  - Fallowfield
  - Victoria Park
  - City centre
- Much of residential estate in Condition C/D
- Need for refurbishment/redevelopment
- Priority redevelopment Fallowfield Campus



## Fallowfield Redevelopment



- Demolition and redevelopment of Oak House and Owens Park
- Major and mini hubs





The University of Manchester

## Phase1 - In Design

### Fallowfield Student Residences Redevelopment



The University of Manchester

## North Campus Development Strategy



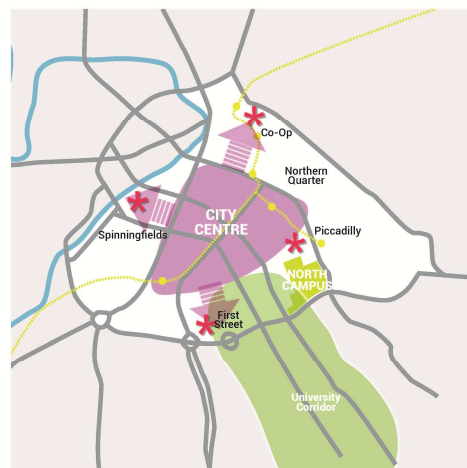
## North Campus Development Strategy

- Largely 1960's buildings but very significant 50,000m2 listed building
- Strategic review of future use as an important part of the City Centre
- Consider physical character, economic development strategy and wider contribution to Manchester's future success
- Upside not included in the current financial plan

## North Campus Development Strategy

### City Centre context

- SE sector of city
- West – Spinningfields
- North – Noma/Northern Quarter
- South – First Street/Manchester Central
- Next major opportunity for growth of the city core
- Scale to create a new city district



## Cross City Bus Package



## New Projects and opportunities

- Sir Henry Royce Institute - £100m
- SKA2 at Jodrell Bank - £12m
- Jodrell Bank First Light Pavilion – £12m
- Manchester Museum – Indian Subcontinent & Temporary Exhibition Gallery - £9.5m
- Centre for International Nuclear Decommissioning Innovation At Dalton Cumbrian Facility - £TBC





## Risks and challenges

- Funding
- Inflation
- Stakeholder engagement
- Construction Industry
  - Contractors
  - Supply Chain
  - Materials
  - Risk
- Economic Conditions
- Maintaining business as normal



## Construction Partnership Framework

- Largest procurement project completed at University
- Cross PSS working
- Significant change in approach to delivering construction works
- Balfour Beatty, Laing O'Rourke & Sir Robert McAlpine
- Long term mutual benefits including Goal 3 objectives

## Summary

- Transformational strategic enabler
- Single site/Co-location of disciplines
- State of the art facilities
- Excellent student experience
- Lower costs
- Reduced carbon footprint
- Ambitious plan
- Experienced team
- Internal and external partnerships
- Engaging key stakeholders
- Creating delivery partnerships



## Communications

Feedback on comms?

[Lisa.C.Mccarthy@manchester.ac.uk](mailto:Lisa.C.Mccarthy@manchester.ac.uk)

Questions on masterplan or projects?

[partneringframework@manchester.ac.uk](mailto:partneringframework@manchester.ac.uk)

