



## IT on Campus

**Mike B Taylor**  
Area Support Manager





What's in  
**IT**  
for me?





IT STARTS HERE...

<https://iam.manchester.ac.uk>

# FINDING A PC



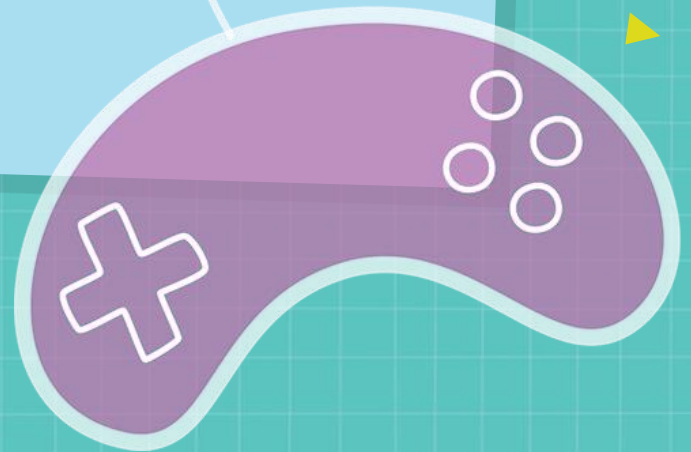


THERE'S AN APP FOR THAT!

GET ONLINE...



• INTERNET in YOUR HALL

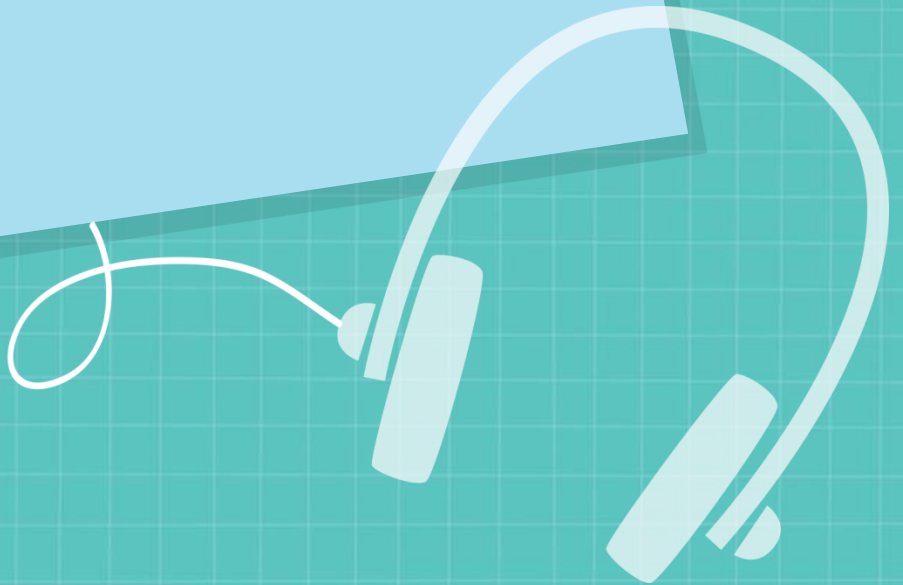




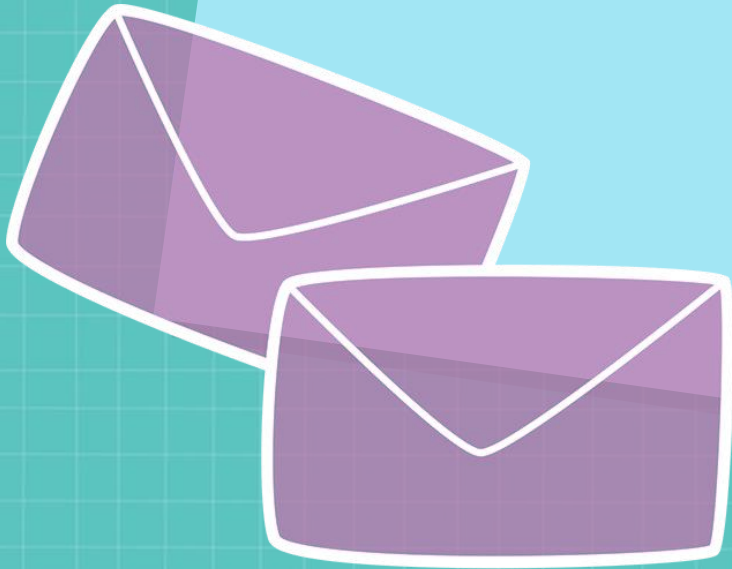
The background is a teal color with a fine grid pattern. On the left side, there are several concentric, wavy lines in shades of yellow, orange, and pink. A vertical dashed white line is positioned near the top center. A solid white circle is in the top right corner. A horizontal dashed white line is on the right side. A small white triangle points upwards in the bottom left. A small yellow circle is in the bottom right.

SUPPORT FOR YOUR DEVICES

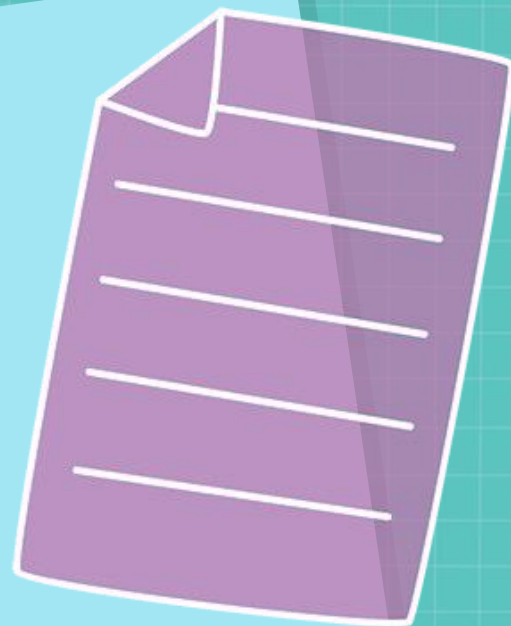
# LECTURE PLAYBACK



EMAIL



PRINTING





# ONLINE STORAGE





BLACKBOARD ELEARNING

# HERE TO HELP

Support Centre 24 hours a day - 7 days a week

Online: **[www.its.manchester.ac.uk/help](http://www.its.manchester.ac.uk/help)**

Phone: **0161 306 5544**

Walk up IT desks:

**Main Library**

**Joule Library**

**Alan Gilbert Learning Commons**

# THANK YOU



University of Manchester ITS



@UoM\_ITS

[www.its.manchester.ac.uk/students](http://www.its.manchester.ac.uk/students)

