

# Development@Manchester NEWSLETTER 2015 | Issue. 6



The Diary

Publications

Opportunities

News

Blogs

About

## The Diary

[Active Learning Network for Humanitarian Action & Performance \(ALNAP\)](#) has a couple of events coming up which will certainly be of interest. Registration is now open for the following webinars:

[Coordinating for Effective Humanitarian Action: Lessons from Unified Command Systems](#), Wednesday 1 April, 2pm, and the [Labour and Livelihoods in Urban Humanitarian Response](#), on Wednesday 8 April, 2pm

### 23 April 2015 at 3pm

A coffee and cake get together will be held in the open plan area for [BWPI](#) and [ESID](#) staff and PhD students.

### 23 April 2015

Social Justice Festival “JustFest” – HCRI Workshop, HCRI will be holding a workshop, led by [Bertrand Taithe](#), with 20 students or more (depending on the preference of those involved from HCRI). More details to be announced soon.

### 7th May, 1-3pm

*HCRI speaker series* “Fragmenting Power in the Arab Uprisings: The Counterrevolution at Work”, Dr Sandra Pogodda -C1.18 Ellen Wilkinson Bldg, Email [hcri@manchester.ac.uk](mailto:hcri@manchester.ac.uk) in order to express an interest in attending this event

### 14 -16 September 2015 in Manchester, UK

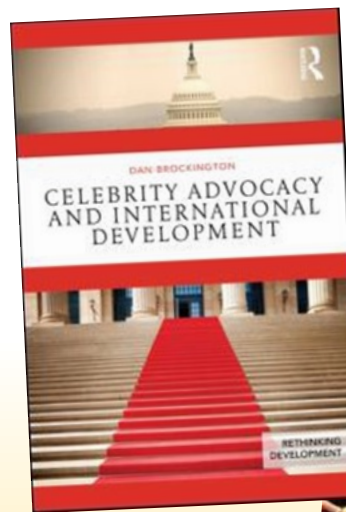
[International Humanitarian Conference: The Quest for Humanitarian Effectiveness](#). Email [hcri@manchester.ac.uk](mailto:hcri@manchester.ac.uk) to register your interest in the conference. Read more [here](#)

### [SEED annual PGR conference 2015: Register](#)

Monday, 18 May 2015 from 09:00 to 17:00 (BST) | Arthur Lewis Building

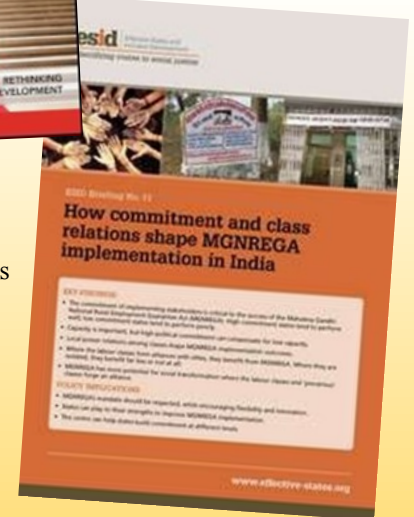
## Publications

[Jordan](#), J. C. 2015. [Swimming Alone? The Role of Social Capital in Enhancing Local Resilience to Climate Stress: a case study from Bangladesh](#). *Climate and Development* 7(2), pp. 110-123.



SEED Professor of Conservation and Development [Dan Brockington](#) has published a new book '[Celebrity Advocacy for International Development](#)' which is garnering media attention and stimulating debate by exploring the politics and practices of celebrity advocacy.

A new ESID briefing has been published on how [commitment and class relations shape MGNREGA implementation in India](#)



# Opportunities

## ***Call for papers and posters***

### **[International Conference: A Quest for Humanitarian Effectiveness](#)**

The HCRI now welcomes paper submissions and presentation proposals from practitioners, academics and policymakers from across the world and from a wide spectrum of disciplines and perspectives on the history, practice, politics and performance of humanitarian action. The poster sessions are a good opportunity to present ongoing research. Posters are intended to provide authors and participants with the ability to connect with each other and to engage in discussions about the work. Deadline for submission of abstracts is 1 May 2015 [Read more here](#)

## ***Call for panels and papers***

Global Development as Relationship: Dependence, Interdependence or Divide

[The DSA Annual Conference](#) 7th and 8th of September 2015 will be held at the University of Bath.

The Development Studies Association Conference in 2015 takes as its theme the forms of relationships that are valued, enacted and denied through current processes of international development. Deadline for submission of abstracts is Tuesday 5<sup>th</sup> May 2015 [Continue reading](#)

## ***International Conference: Inequality, Peace and Conflict***

Call for papers for our [Fourth Annual Conference of the International Association for Peace and Conflict Studies and the ECPR Standing Group on Critical Peace and Conflict Studies](#) (10-11 September 2015) at the Humanitarian and Conflict Response Institute (HCRI), University of Manchester. Deadline for paper and panel proposals: 31 May 2015. Proposals should be 250 words maximum and sent to [iapcs@manchester.ac.uk](mailto:iapcs@manchester.ac.uk). For updates, see Twitter pages [@Peacebuilding\\_](#) and [@hcrInstitute](#)



## News & Funding

### [Postgraduate research \(PhD\) programmes and funding opportunities](#)

Please View School of environment, Education and Development (SEED) Postgraduate research fees and funding sources [here](#).

### [School of environment, Education and Development \(SEED\) Other funding opportunities](#)

### [Research Leadership Awards](#)

Supporting researchers with an established university career who wish to build a research team to address a distinct research problem. Between £800,000 and £1million over up to five years is available for staff salaries and associated research costs. The scheme normally runs every three years. It is expected that this scheme will next run in 2016. [Read More here](#)

### [HCRI bursary – MA/MSc courses](#)

Deadline for application - 31 May 2015

A total of three MA bursary awards are available for 2015/16 to fund UK/EU fees or partial payment for the overseas fee. Amount: £6,500. [Read more here](#)

### [Constance Markievicz field trip bursary 2015-16, MA in Peace and Conflict Studies](#)

A number of bursaries of £500 pounds each are available and field trip costs are estimated in the £600-700 range. This is a working field trip with an emphasis on conflict-sensitive fieldwork methodologies. Students must be enrolled on the MA to apply for the bursary. Read the [Details of the MA Peace and Conflict Studies](#) here

### [Alumni Fund PhD Award in Social Cohesion, Regenerative Medicine, Science & Society, Cancer 2015, World Poverty and Carbon Reduction.](#)

This is a minimum partial award of £8,000 or a full award of £16,000 per annum up to 3 years. Two awards are available each year in each of the Faculties of EPS, Humanities, MHS and one available in Life Sciences. This funding is available to all nationalities. Please contact the relevant faculty administrator listed under further information tab [here](#) for deadlines and further information.

### [Elys Roberts Scholarships – postgraduate certificate in Global Health \(PG Cert\)](#)

Deadline for application is in May 2015. Two Elys Roberts Scholarships are available for 2015/16, to fund the PG Cert tuition fee. The Elys Roberts Scholarship is intended to support those most in need, and is awarded based on a number of criteria including reference, and the quality of the reflections in the applicant's personal statement. Amount: £2,100. Applicants may be of any nationality. Read more [here](#) and apply online, [here](#).

### [HCRI Bursary – postgraduate certificate in Global Health \(PG Cert\) and the Special HCRI bursary - postgraduate certificate in Global Health \(PG Cert\).](#)

Deadline for application is in May 2015. A total of one HCRI Bursary is available for 2015/16, to fund the PG Cert tuition fee. The HCRI Bursary is intended to support those most in need, and is awarded based on a number of criteria including reference, and the quality



## IDPM NEWS

Latest news stories from the Institute for Development Policy and Management.

Follow IDPM on Twitter: [@ManchesterIDPM](#)

Follow HCRI on Twitter: [@HCRInstitute](#)

Follow BWPI on Twitter: [@BrooksPoverty](#)

# BLOGS



## [Rising Powers', Responsible Consumption, and Standards](#)

Development Manchester: Critical visions of development  
February 9 2015.

Two journal articles involving Manchester Rising Powers research have been included in a [free online article collection](#) featuring the most downloaded articles published in Routledge Social Sciences journals in 2014.

[Continue reading →](#)

## [How do Rural Labour Markets Respond to Shocks?](#)

Development Manchester: Critical visions of development  
By [Ralitza Dimova](#); February 20 2015

The occupational portfolio choice of small farmers in rural environments is among the most high profile areas of research and policy debate in development economics. One key focus area is the choice between relatively risk-free – though less profitable – activities such as subsistence farming and higher-risk and higher return activities like livestock and cash crop production. [Continue reading →](#)

## [3 Big Issues for Research Uptake](#)

Development Manchester: Critical visions of development  
[Chris Jordan, March 2, 2015](#)

There is an increasing pressure both in the UK and around the world for researchers to demonstrate the tangible benefits to society of their work. 'Impact', 'uptake' and 'knowledge exchange' are taken (and resourced) increasingly seriously. The days of the ivory tower are numbered. [Continue reading →](#)

## [International Women's Day](#)

Brooks World Poverty Institute; March 6 2015

International Women's Day on Sunday 8th March celebrates the economic, political and social achievements of women. Brooks World Poverty Institute research demonstrates that women play a vital role in improving global value chains – as workers, farmers, producers and consumers – which can have a significant impact on pro-poor development.

[Continue reading →](#)

## [The pro-Palestinians who welcomed Netanyahu's re-election](#)

By [Roger Mac Ginty](#); 19 March 2015

There has been quite a bit of media and social media commentary from the Left that has welcomed Benjamin Netanyahu's re-election in Israel. The notion immediately seems jarring and counter intuitive, but there is a logic to it. The following argument has been made [Continue reading](#)

## [Social accountability or social transformation?](#)

### [Working 'with' and 'against' the grain](#)

By [Sophie King](#); 06 March 2015

Social accountability has become an important 'buzzword' among development actors seeking to understand the forms of state-society relations that may be supportive of better public services. Malena and McNeil (2010: 1) define it as 'the broad range of actions and mechanisms beyond voting that citizens can use to hold the state to account'.

[Continue reading →](#)

### ['Leave no one behind what do we mean by 'inclusion'?](#)

By Kate Pruce and Diana Mitlin; 12 March 2015

By calling for a pledge to 'leave no-one behind' as the first principle of the post-2015 development agenda, the UN High Level Panel report places social justice at the heart of the new agenda, emphasising the need to reach the most vulnerable, not just the largest number of people.

[Continue reading →](#)

### [Would the 99% please stand up against 'free' schools! What has become of education as a human right – instead of a middle class playing ground that ultimately cements social inequalities?:](#)

Tanja Müller; 13 March 2015

Some words suggest states of affairs that it is hard to be 'against' as the linguistic term used to describe them evokes undisputed goods. One such term in recent policy debates in the United Kingdom are the so-called 'free' schools that suggest children are best educated as far away from state control as possible [Continue reading →](#)

### [Understanding the politics of inequality](#)

Development Manchester: Critical visions of development  
By [Sam Hickey](#), [Sophie King](#) and [Sarah Hunt](#); 17 March 2015: History has much to tell us about the politics of inequality, but the moral of the story depends upon the lens through which we choose to interpret its lessons. The recent [DLP conference](#) on this theme raised many of the questions that ESID is attempting to address, as well as demanding some considered defence of the '[political settlements plus](#)' framework that constitutes our analytical lens for understanding the politics of inclusion [Continue reading →](#)

# DEVELOPMENT@MANCHESTER

*Development@Manchester is a collaborative newsletter that collates news and updates from the following institutes:*



The [Institute for Development Policy and Management \(IDPM\)](#) promotes social justice, economic development and greater equality within and across countries, particularly for marginalised groups, by enhancing the capabilities of individuals and organisations through research, education, policy analysis and advisory work.



The [Humanitarian and Conflict Response Institute \(HCRI\)](#) is inspired by the need to conduct rigorous research and to support postgraduate training on the impact and outcomes of contemporary and historical crises.



The [Brooks World Poverty Institute \(BWPI\)](#) is an international centre of excellence established to create and share knowledge to end poverty, in both North and South, and to shape policies that deliver real gains for people in poverty.

---

If you have an article that you would like included in the next issue of [Development@Manchester](#) please forward the information to either:

**Fortunate Machingura:**  
[fortunate.machingura@postgrad.manchester.ac.uk](mailto:fortunate.machingura@postgrad.manchester.ac.uk) (IDPM)

Or

**Samantha Winkler -**  
[samantha.winkler@manchester.ac.uk](mailto:samantha.winkler@manchester.ac.uk) (HCRI)

---