



MANCHESTER
CITY COUNCIL

Governance in Manchester and the Self-Improving School System

John Edwards, Director of Education and Skills
Manchester City Council



176 Schools and Academies

40 Academies:

- 23 Primary Phase
- 15 Secondary Phase
- 1 Special Needs Secondary Phase
- 1 All through

3 Primary Free Schools

1 Sixth Form College Free School

1 Studio School (14-19)

School Population 74,143

Free School Meals 33% (National Average 16%)

SEN 20.4% (National Average 17.9%)

Maintain 2269 Statements

**4th most deprived authority in England
(2010 Indices of Multiple Deprivation)**



Outcomes for 2014 – Final Validated

Early Years Foundation Stage

% Good Level of Development	2013	2014
Manchester Average	46.9	53.1
National Average	52	60

The outcomes have improved, however the national average has also increased. EYFS results are still below the national average.

The Revised EYFS was introduced in Sept 2012 meaning that direct year on year comparisons are only available for the past two years.

KS1 Attainment

% L2+ Reading	2012	2013	2014
Manchester Average	82.2	83.3	84.7
National Average	87.0	89.0	90.0
% L2+ Writing	2012	2013	2014
Manchester Average	78.7	79.5	81.6
National Average	83.0	85.0	86.0
% L2+ Maths	2012	2013	2014
Manchester Average	86.9	87.2	89.0
National Average	91.0	91.0	92.0

KS1 attainment continues to improve. Results are still below national averages, but the gap has narrowed

KS2 Attainment

% L4+ Reading, Writing, Maths	2012	2013	2014
Manchester Average	73	75	79
National Average	75	75	79

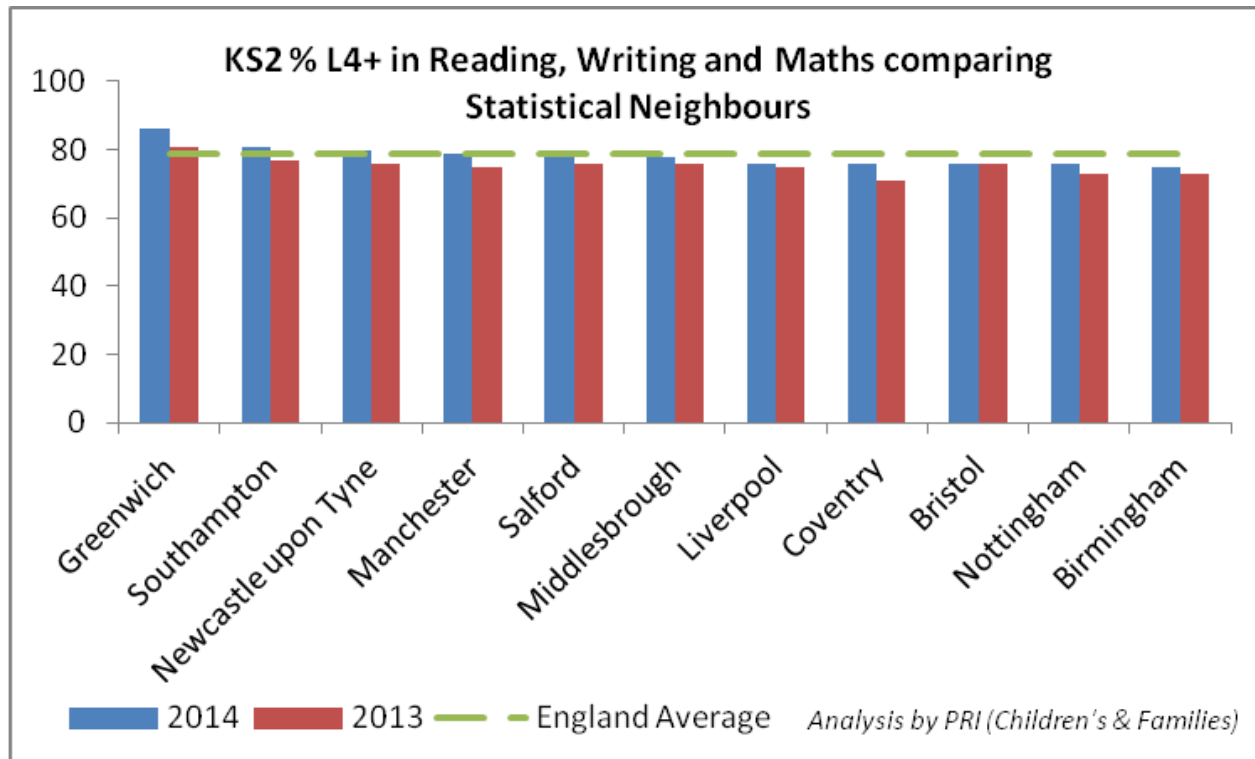
Continues to improve, in line with National Averages

KS1-2 Progress

% Expected Progress		2012	2013	2014
Manchester	Reading	91	90	91
	Writing	92	93	94
	Maths	90	91	91
England	Reading	90	88	91
	Writing	90	92	93
	Maths	87	88	90

Maths and Writing are above and Reading is in line with National Averages

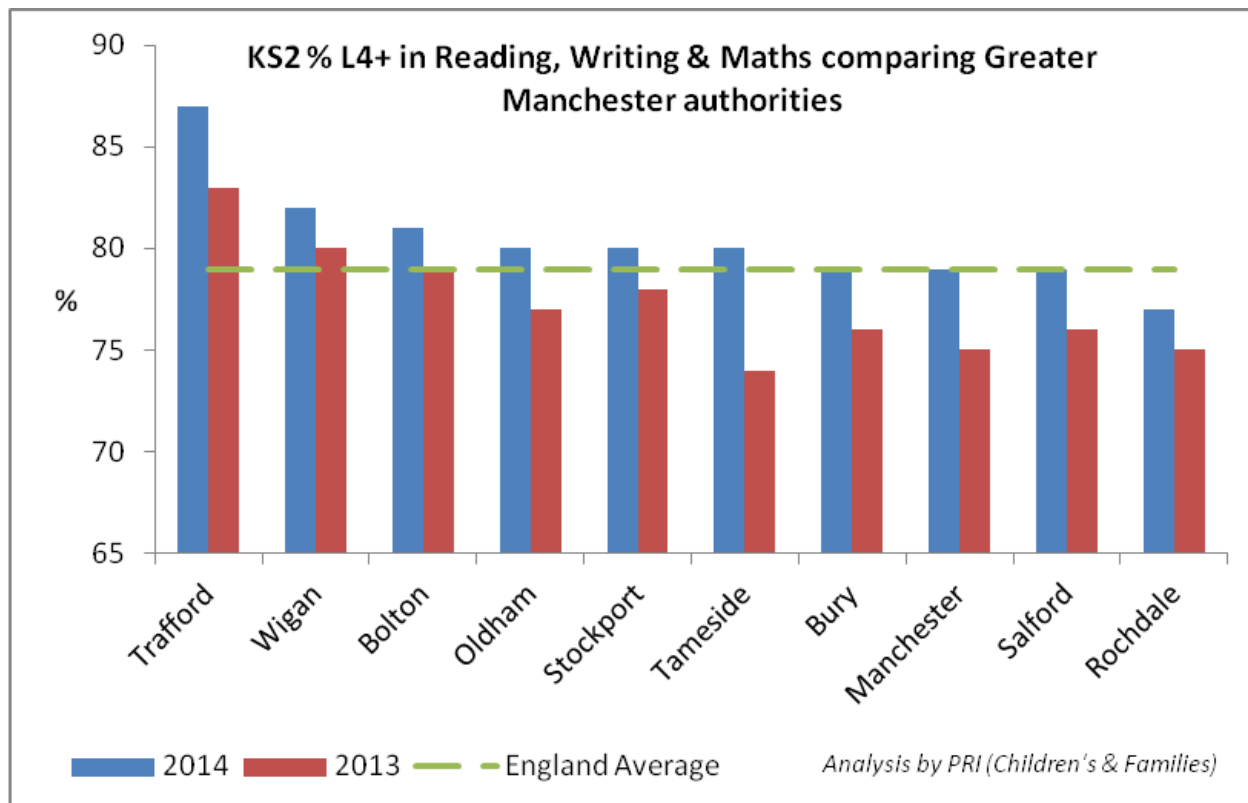
Statistical Neighbours



Rank joint 4th with Salford

Improved at second highest rate

Greater Manchester Local Authorities



Joint 5th with Bury and Salford

(Oldham, Stockport and Tameside are Joint 4th)

Improved at second highest rate

KS4 Attainment

%5+ A*-C inc English and Maths	2012	2013	2014
Manchester	53.2	53.2	51.4
National Average	59.4	59.2	53.4

Manchester below the national average. National average also decreased.

Manchester has decreased less than other LA's. 30th highest increase nationally

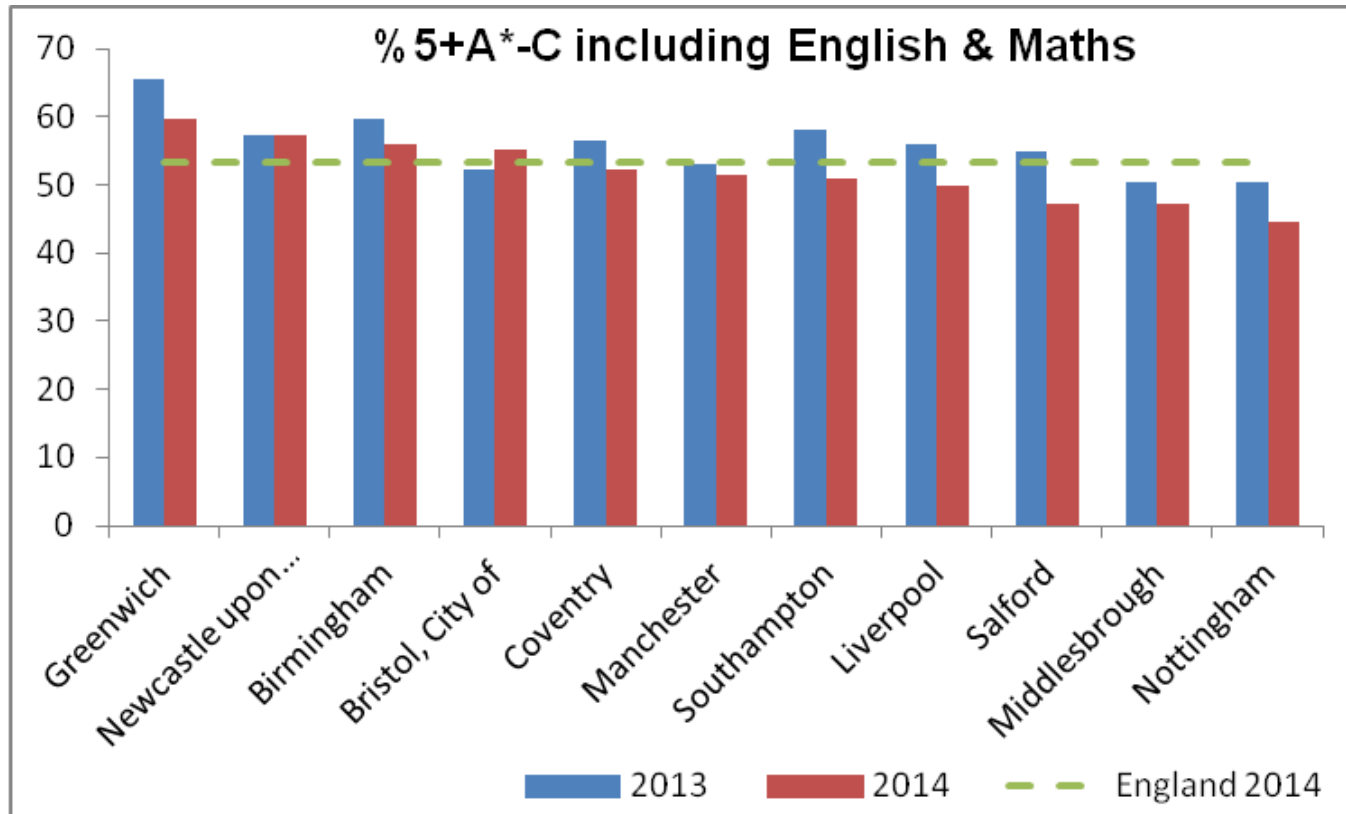
Narrowest gap we have had to national averages

KS2- 4 Progress

% Expected Progress KS2-4		2012	2013	2014
Manchester	English	67.0	67.7	70.7
	Maths	62.4	63.6	58.9
National Average	English	68.0	70.4	71.6
	Maths	68.7	70.7	65.5

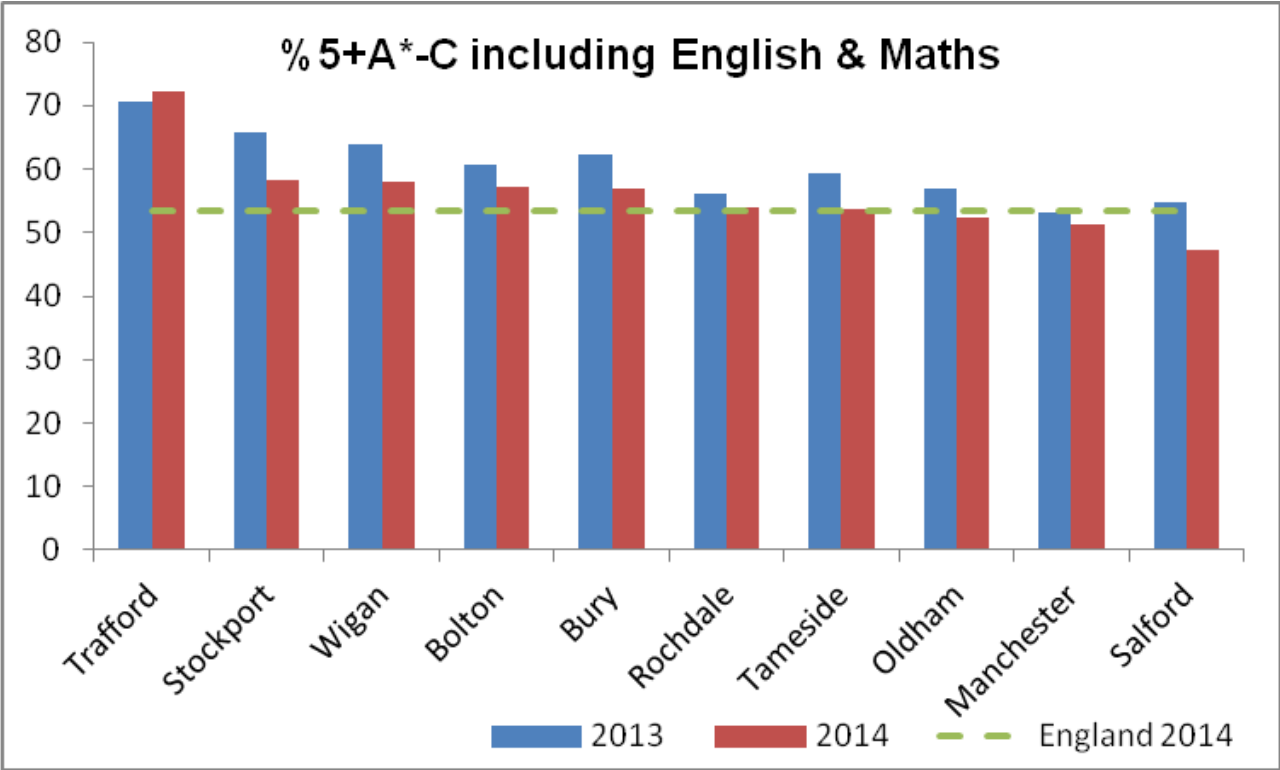
Below national average. Increase in English & decrease in Maths. Same pattern nationally.

Statistical Neighbours



Rank 6th. Third lowest decrease

Greater Manchester Local Authorities



Rank 9th. Manchester had the smallest decrease in results

Destination data

	Manchester			England		
Publication Year	2010/11	2011/12	2012/13	2010/11	2011/12	2012/13
KS4 Cohort Year	2009/10	2010/11	2011/12	2009/10	2010/11	2011/12
Remaining in education, employment and training	84%	86%	87%	89%	89%	91%

Y11 activity a year after leaving school. Activity sustained for two terms

NEET Data

	2012	2013	2014
Manchester	4.87%	5.64%	5.76%

Schools judged as Good or Outstanding

	Manchester	National
Nursery	100%	96%
Primary	86%	82%
Secondary	62%	71%
Special	100%	90%
PRU	100%	83%
Overall	84%	81%

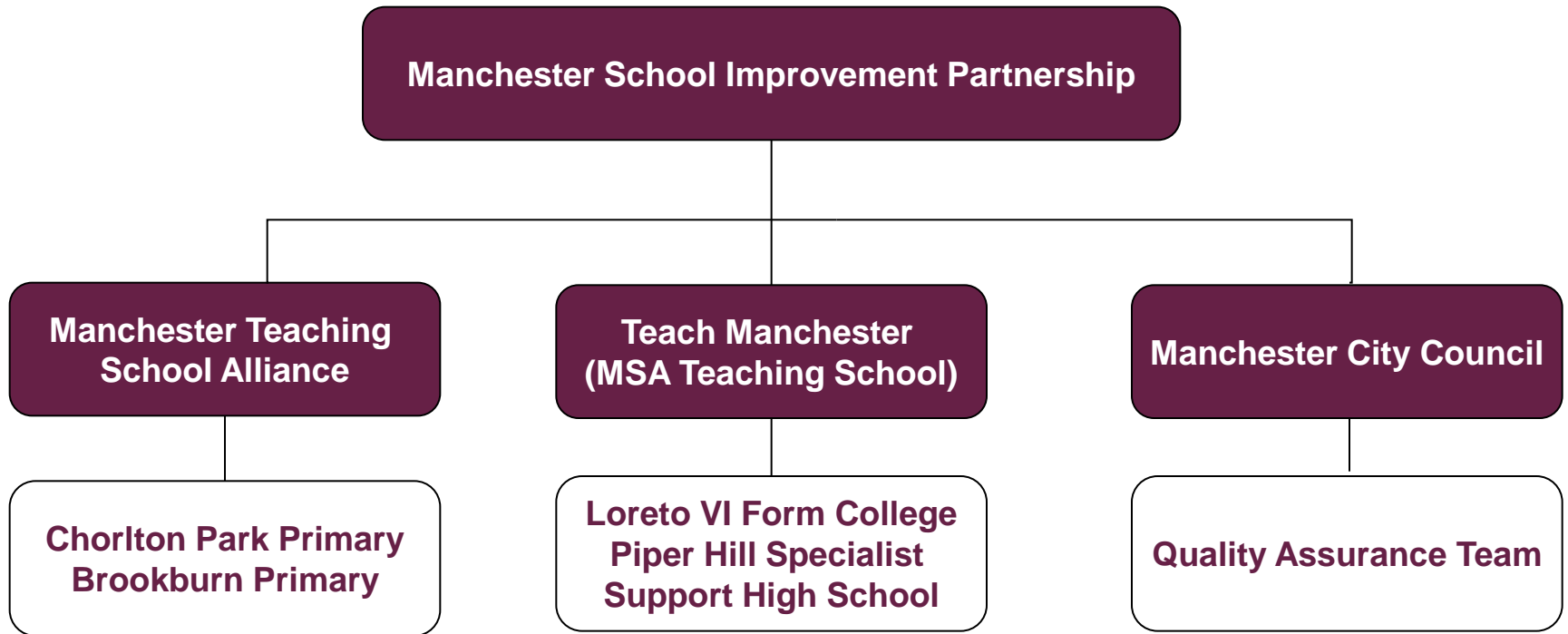
LA Statutory Responsibilities for School Improvement

- No longer a provider of school improvement, but has a duty to secure school improvement and;
- Intervene in maintained schools and work closely with those at risk and/or requiring additional support,
- Is required to secure services which address the needs of all children and young people:
 - *working with partners to promote prevention and early intervention to narrow the attainment gap and promote the well being of children*
 - *ensuring fair access to schools and promoting high quality places*
 - *working with headteachers, principals, governors and academy sponsors and principals to promote educational excellence for all, tackling underperformance and promoting school to school collaboration*

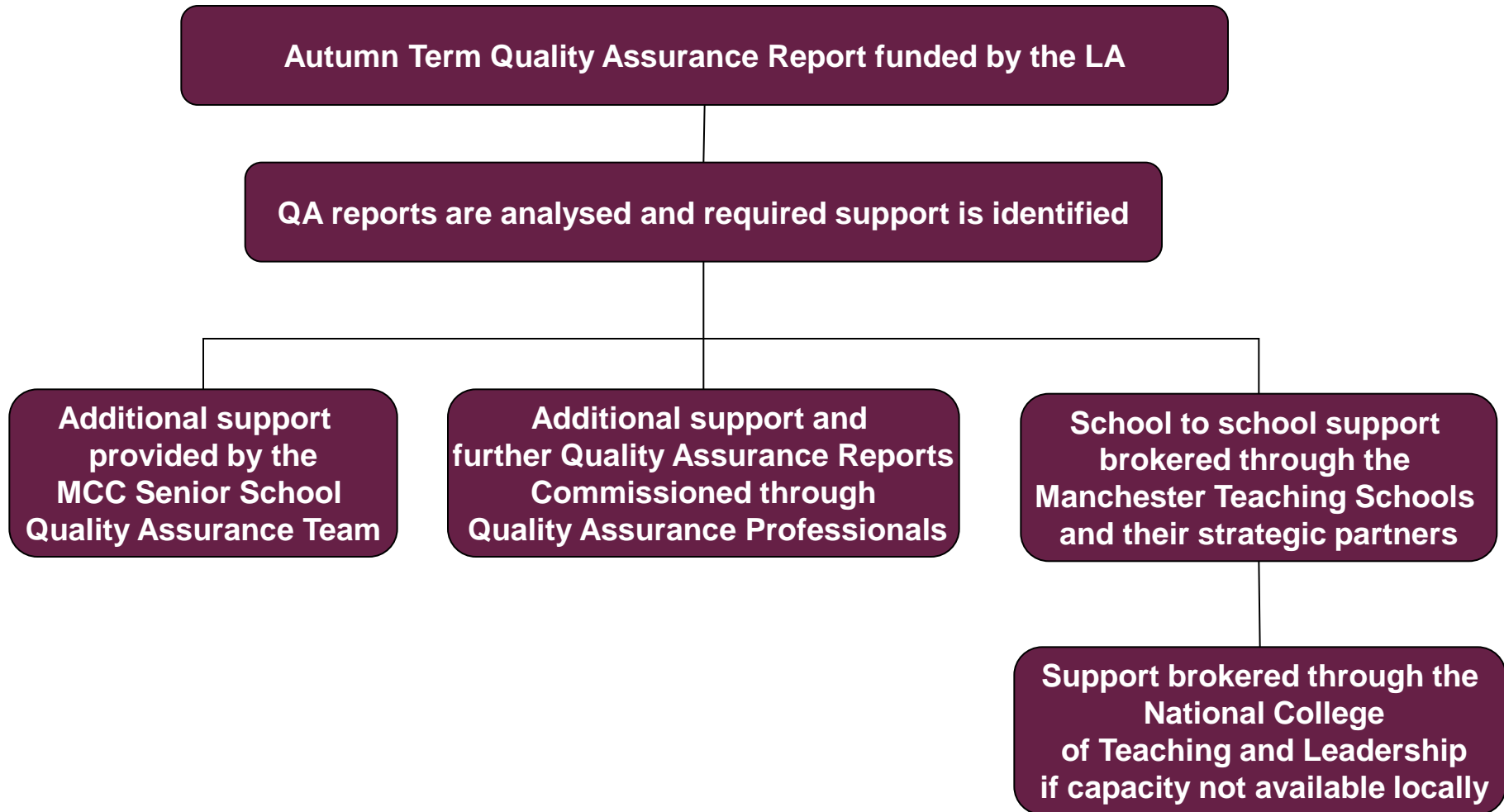
How the LA works to support School Improvement

- Quality assures School Self-Evaluation to identify need and broker support for all schools in Manchester (including Academies and Free Schools)
- Manchester Family of schools approach to build self-improving schools
- Local solutions for school to school support working with the Manchester Schools' Alliance and local Teaching Schools, through the Manchester School Improvement Partnership
- Working with the DfE and the Regional Schools Commissioner to support school improvement

How the LA works to support School Improvement



How the LA works to secure School Improvement



Chairs of Governors are invited to the QA meeting in the Autumn Term

QA reports are available for GBs to use to support their understanding of their school's performance



Support brokered through the Manchester Teaching Schools, the MCC Quality Assurance Team, the Manchester Schools' Alliance and the National College of Teaching and Leadership

School Clusters and Partnerships

Schools across the City are in a range of formal and informal clusters and partnerships to provide a range of support for example:

- Curriculum development- subject specific network groups
- Moderation and Assessment Groups
- Early Years networks
- Business Manager networks
- Behaviour and Attendance networks
- Manchester Catholic Education Partnership (MANCEP)

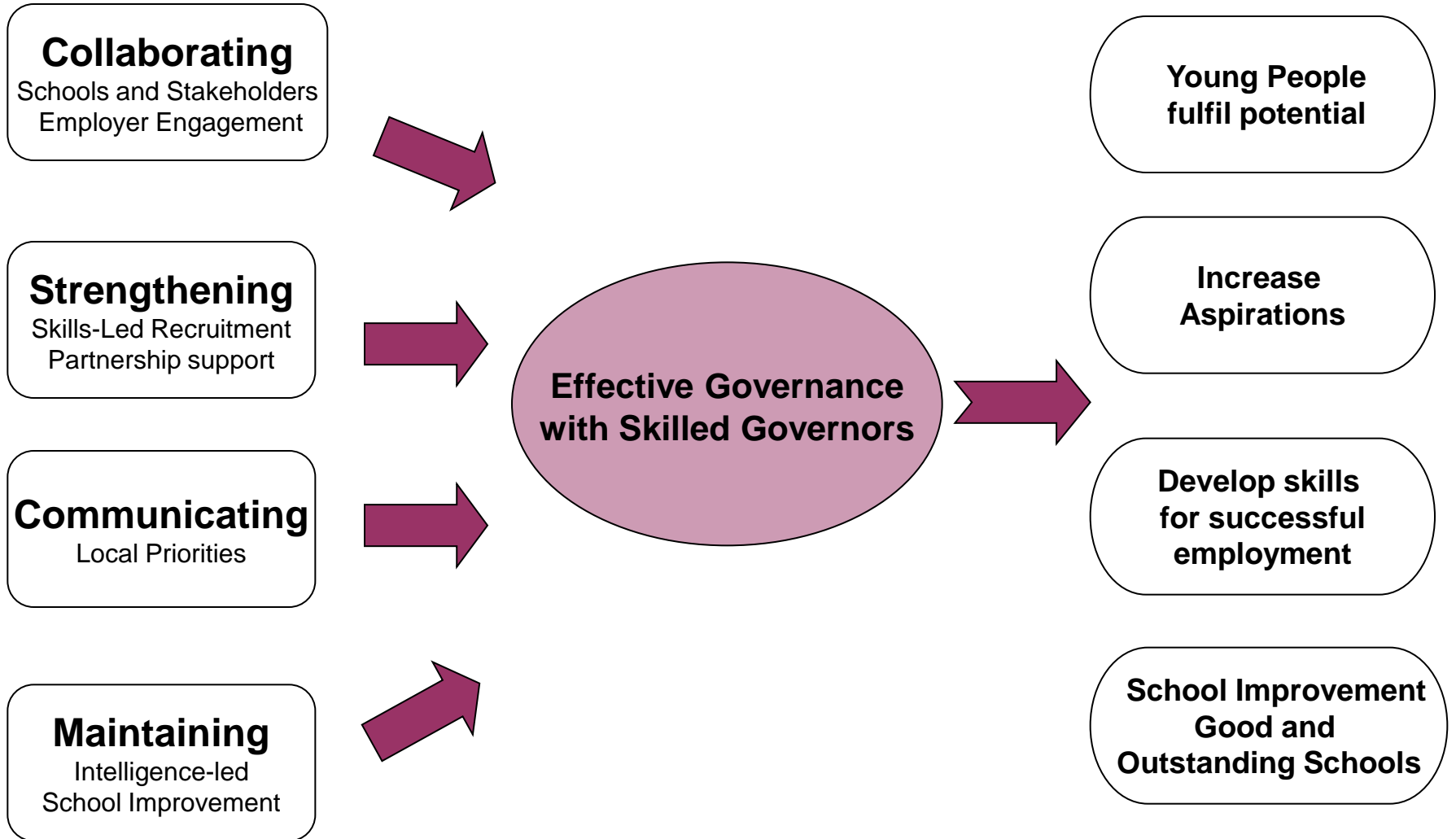
Governance Partnership: Manchester Governors' Association, Manchester Schools' Alliance and the School Governance Unit

Effective Governance in Manchester - The Vision

The aspiration is that all governing bodies in Manchester will:

- have a diverse range of people with the relevant skills, experience and understanding of the local community and the City's priorities
- demonstrate the key elements of effective governance
- demonstrate the impact they make through an embedded, regular self-review process
- have information about local and national providers of governors support, resources and training events in order to commission the support they need
- have information and access to NLGs to provide support and external reviews
- have access to peer support, local leaders of governance and dissemination of good practice through the Manchester Schools' Alliance
- have an independent voice and access to local training events and conferences through the Manchester Governors Association

Governance Strategy



The Governance Strategy

- **Collaborating** with schools, businesses and stakeholders to explore new approaches to and models of school governance
- **Communicating** effectively the Council's objectives and duties for child and family welfare, skills and employment, community regeneration and economic growth
- **Strengthening** governing bodies by using a skills-led recruitment model for LA governors, developing national leaders of governance and local leaders of governance in collaboration with the MSA and NCSL
- **Maintaining** an 'intelligence-led' approach to ensuring the Council and governing bodies are discharging their statutory duties, driving school improvement and improving outcomes for children and young people

How the Council Supports Governing Bodies

- Termly Newsletters
- Chairs Briefing Meetings
- MGA/MSA/MCC partnership programme of events
- School Governance Website www.manchester.gov.uk/governors
- Working with the MSA to support the development of the Manchester Leaders of Governance Programme
- Recruitment and support for LA Governors
- Assistance with recruitment of Co-opted governors via SGOSS
- Engaging with local businesses and SGOSS to embed governance into CSR policies, and support the recruitment of governors
- Making Instruments of Government and providing guidance around reconstitution

www.manchester.gov.uk/governors

schoolgovernance@manchester.gov.uk

0161 219 6899

Coming Soon.....

Manchester's Accredited Provider List of Governor Support, Training and Resources (available from April 15)

Manchester's Governor Handbook (available Summer Term 2015)

Online Governance Survey (available September 2015)

www.manchester.gov.uk/governors

schoolgovernance@manchester.gov.uk

0161 219 6899



Thank You for your continued support and commitment as governors in Manchester

