

HESA 'Performance Indicators' on Recruitment and Retention of students

To Vice-President for Teaching, Learning & Students
Registrar, Secretary and Chief Operating Officer
Faculty Vice-Presidents & Deans
Faculty Associate Deans for Teaching and Learning
Heads of Faculty Administration
Undergraduate Recruitment & Admissions staff
Faculty Planning Officers
School Academic & Administrative Champions for Recruitment & Admissions

From Helen Barton, Director of Planning Support: 0161 275 2154
Stephanie Lee, Head of Widening Participation and Outreach t: 0161 275 7544

Date/Version 28th April 2014

Summary

The latest annual HESA Performance Indicators (PIs) on the widening participation profile and retention of UK domiciled students were released into the public domain on 27th March 2014, based on data from 2012-13 and 2011-12. This paper provides an analysis of the University's performance against both benchmark and sector; and further breakdown of the data by Faculty and School (see attached tables).

The following table summarises our overall performance against benchmark, the Russell Group and English HEIs on key Performance Indicators. Two of these PIs - National Statistics Socio-Economic Classification (NS-SEC) and Low Participation Neighbourhoods (LPN) - are high-level strategic KPIs in the University's Strategic Plan and are also used to indicate progress towards our targets with the Office for Fair Access (OFFA).

Table 1a: Participation of under-represented groups in higher education: Young full-time first degree entrants 2012/13	% Low Participation N'hoods (LPN) POLAR 3¹	% Lower Socio-Economic Groups (NS-SEC 4-7)	% State Schools and Colleges	% Disabled Students Allowance	% Non-Continuation (Young Entrants)
The University of Manchester	8.2	25.3	81.4	6.2	3.6
OFFA Access Agreement target 2014/15	7.7	21.8	n/a	n/a	n/a
OFFA Access Agreement target 2017/18	7.9	22.8	n/a	n/a	n/a
England	10.9	32.8	89	6.7	5.7
English Russell Group (20 HEIs)	6.0	19.7	74.1	5.4	2.6
English Russell Group Ranking (20 HEIs)	3rd	2nd	5th	5th	17th
UoM Standard Benchmark	7.2	24.2	82.2	5.2	3.1
UoM Standard Benchmark Difference	1.0	1.1	-0.8	1.0	0.5

Key points

- **LPN** – The percentage of our young first time degree entrants from LPNs (POLAR 3²) has risen in 2012/13 to 8.2%. We have performed above our standard benchmark for this indicator by 1.0%.
- **NS-SEC** - we recruited 25.3% of students from lower socio-economic groups in in 2012/13 (up from 20.4% in 2011/12). This is 1.1% above our standard benchmark of 24.2%.
- **State Schools** – whilst recognised as the least valid measure of WP performance, it is nevertheless monitored by HESA and OFFA. We have seen a rise of 4.4% for entrants from State Schools to 81.4% in 2012/13. This is, however, below our standard benchmark by 0.8%, although this is not statistically significant.
- **DSA** – 6.2% of home UG students were in receipt of the DSA, 1.0% above our standard benchmark.

¹OFFA Access Agreement targets for LPN are based on POLAR 2 data. The University will be updating these targets with OFFA following the publication of the 2013/14 HESA performance data.

² HESA published the new LPN dataset - POLAR 3 - for the first time in 2013 which is based on the HE participation rates of people who were aged 18 between 2005 and 2009 and entered a HE course in a UK higher education institution or English or Scottish further education college, aged 18 or 19, between academic years 2005-06 and 2010-11. This is an update to the previous dataset – POLAR 2 – which we used to report on this indicator last year.

- **Non-continuation** – 3.6% of young entrants were no longer in higher education by 2011/12 – an improvement on last year's figure of 4.5%. However, we remain above the standard benchmark for this indicator by 0.5%, although this is not statistically significant.

When assessing performance across these indicators, it is important to note that there has been significant volatility in the WP data over the past three years. In 2011/12, the University saw a slight decrease in the proportion of students from Low Participation Neighbourhoods and lower socio-economic groups, in what was an unusual year for admissions with strong competition and demand for places from students prior to the introduction of the new fee regime for 2012 entry. In 2012/13, although our proportions of students from these backgrounds has increased, some of this strong performance is attributable to the fact that the University's recruitment figures overall dropped for 2012 entry, whilst the absolute number of WP students has stayed fairly similar. Internal analysis of 2013 entry, based on the 1st December data using registered student numbers, is provided by faculty and academic school in Tables I and J. This analysis indicates that we have seen a slight drop on 2012/13 levels in the proportions of WP students, although our absolute numbers have increased slightly.

PERFORMANCE INDICATORS IN HIGHER EDUCATION 2012/13

UNIVERSITY OF MANCHESTER SUMMARY AND RUSSELL GROUP COMPARISON

1. WIDENING PARTICIPATION OF UNDER-REPRESENTED GROUPS³

This relates to new entrants in 2012/13, with different indicators for young and mature students. These are

- percentage of students from state schools/colleges
- percentage of students from lower socio-economic groups (NS-SEC 4-7)
- percentage of students from Low Participation Neighbourhoods (LPNs)

2. BENCHMARKS

For each of the indicators, HESA presents an institution's actual figure and two benchmarks:

- Standard benchmark - is the average value that the whole UK sector would have if it had the same subject mix, age and entry qualifications profile as the institution.
- Location adjusted benchmark – takes account of the region of origin of an institution's students, as well as their subject and entry qualifications. This is the result of work done by HEFCE to try and measure the effect of location on the access indicators.

Benchmarks should be used as a guide to institutional performance; sensible comparisons between institutions can only be made when they have similar 'standard' benchmarks and the institutions are similar in nature.

3. ACCESS AGREEMENT 2012/13 AND UNIVERSITY STRATEGIC PLAN

The University has a number of stretching targets agreed with the Office for Fair Access in its Access Agreement. The targets relating to young, full-time first degree entrants are:

- "to outperform benchmark and obtain a 7.7% progression of students from Low Participation Neighbourhoods" (LPNs) by 2014/15 (increasing to 7.9% by 2017/18).
We know who such students are during the admissions process via contextual data indicators
- "to narrow the gap against benchmark and obtain 21.8% progression of students from lower socio-economic groups (NS-SEC 4-7) by 2014/15" (increasing to 22.8% by 2017/18)
We do not know who such students are during the admissions process since NS-SEC occupational data from the UCAS form is not coded by UCAS until March the following year. We therefore use a proxy for this in the form of ACORN geo-demographic data.

These are also used as high-level KPIs to monitor progress against the University's Strategic Plan.

³ HESA publish data for both young full-time *first degree* entrants (Table T1a) and young full-time *undergraduate* entrants (Table T1b). The University's percentages are very similar in each table (as we have relatively small numbers of students on Foundation Degree, HND, HNC and similar courses). However, the University benchmarks do differ between tables T1a and T1b, as they are based on average value for the whole UK sector.

3.1 Young full-time first degree entrants (Tables A, B, C and D)

From low participation neighbourhoods (LPN)

- a. The proportion of entrants from LPNs in 2012/13, using the POLAR3 classification, has increased to 8.2% from 6.2% in 2011/12. We are performing above our standard benchmark by 1.0% and above our location adjusted benchmark by 0.1%.
- b. Using the POLAR 3 data, Manchester recruits the third highest % of entrants from LPN areas out of the English Russell Group, with just Liverpool (9.6%) and Leeds (8.3%) recruiting higher proportions (this compares to a rank position of 7th in the English Russell Group for entrants in 2011/12 using POLAR 3). The average for the 20 English Russell Group universities is 6.0% using POLAR 3 and 6.2% using POLAR 2.
- c. The proportion of students from LPNs has increased across all faculties. EPS has seen an increase from 6.9% to 8.0% in 2012/13, Humanities from 5.2% to 7.8%, Life Sciences from 4.9% to 6.3% and MHS from 8.6% to 10.3%. At School level there are some exaggerated fluctuations in percentages and figures year-on-year because of the small numbers of students involved in this indicator.

From NS-SEC classes 4-7

- d. The University recruited 25.3% students from lower NS-SEC groups (classes 4-7, the non-managerial/professional/intermediate occupations) in 2012/13, which is a rise of 4.9% on last year and 1.1% above our standard benchmark. We are also performing slightly above our location adjusted benchmark of 25.1%.
- e. The average for the English Russell Group is 19.7%. Of the 20 English Russell Group institutions the University is ranked 2nd, with Queen Mary London recruiting the highest proportion (34.6%) of entrants from lower socio-economic groups.
- f. In Manchester, MHS continues to recruit the largest proportion of students from lower NS-SEC groups, 30.0% (and an increase from 26.5% in 2011/12). EPS recruited 25.3% (an increase from 21.9%), HUM 23.5% (an increase from 16.7%) and FLS 23.3% (an increase from 22.9%) of entrants from NS-SEC groups 4-7.

From state schools/colleges

- g. The percentage of new entrants to Manchester from state schools or colleges has risen this year by 4.4% to 81.4%. We do remain below the benchmark however, although the gap has reduced from -2.9% to -0.8%, and is not statistically significant.
- h. The average for the English Russell Group is 74.1%. The English institutions in the Russell Group which recruited a greater proportion of students from state schools and colleges than Manchester are Liverpool (87.3%), Southampton (86.3%), Queen Mary London (85.8%), and Sheffield (85.2%).
- i. Within the University, there has been an increase in the proportion of students from state schools and colleges in EPS (from 84.6% in 2011/12 to 85.7% in 2012/13), HUMS (from 68.1% in 2011/12 to 76.2% in 2012/13), and in MHS (from 85.0% in 2011/12 to 85.8% in 2012/13). FLS has seen a slight drop (from 85.2% in 2011/12 to 83.7% in 2012/13). There is wide variation between Academic Schools with 96.4% of students in Nursing and Midwifery from state schools to 73.1% of students in Dentistry.

3.2 Mature full-time UG entrants with no previous HE qualification and from LPNs (Table T2a)

The proportion of first degree entrants with no previous HE qualification and from LPNs has increased to 10.8% in 2012/13 from 9.3% in 2011/12. We remain above our standard benchmark of 9.9%.

4. STUDENTS IN RECEIPT OF DSA (Table T7)

The HEFCE Performance Indicators provide information on the percentage of students in receipt of Disabled Students Allowance (DSA). In 2012/13, 6.2% of all home undergraduate students were in receipt of the DSA – 1.0% above the benchmark.

5. NON-CONTINUATION FOLLOWING YEAR OF ENTRY

This table compares HESA student data for 2011/12 and 2012/13 to identify students who do not continue at the institution. It shows both the proportion of 2011/12 UK domiciled young and mature entrants who transfer to another institution and the proportion who are no longer in H.E. in 2012/13. The institutional Performance Indicator is the column labelled '% not in HE' and does not include those students who transfer to another institution. However,

when disaggregating the data to Faculty and School level, it is not possible to isolate the students who have transferred so the non-continuation rate is proportionately higher.

**** Note that low scores are better for this indicator ****

5.1 Young and mature full-time first degree entrants (Tables E, F and G)

- a. Overall 4.1% of **all entrants** from 2011/12 **were no longer in HE** by 2012/13, an improvement on last year's non-continuation rate of 5.2%. However, we remain above our standard benchmark of 3.7%. Including students who have left Manchester to transfer to another institution, the non-continuation rate increases to 6.3%, compared with 7.7% the previous year.
- b. 3.6% of **young** entrants **were no longer in HE** by 2012/13, an improvement from 4.5% last year, and narrowing the gap to benchmark from 1.3% to 0.5%. Similarly, there has also been an improvement in the percentage of mature entrants no longer in higher education. In 2012/13 this was 8.6% - compared to 12.2% in 2011/12 and we are now performing just below (and therefore better) than our benchmark by 0.1%.
- c. At Faculty level, for young entrants, Humanities and MHS have the best non-continuation rate (**% withdrawn from Manchester**) at 4.9% (compared to 6.2% last year in Humanities and 5.7% last year in MHS). EPS have a non-continuation rate of 7.1% (compared to 8.1% last year) and excluding Foundation students this drops to 5.0% (from 6.1% last year). FLS also have a non-continuation rate of 7.1% (compared to 11.1% last year). At School level, there are some exaggerated fluctuations in percentages year on year because of the small numbers involved in this indicator.
- d. The Russell Group institutions perform better than the sector in retaining Young FT first degree new entrants – 2.6% were no longer in HE in 2012/13 (2.8% in 2011/12) compared to the UK and England sector average of 5.7% respectively. Cambridge has the lowest non-continuation rate at 0.9% and Queen Mary London has the highest at 5.1%. After Cambridge a further eleven Russell Group HEIs have a non-continuation rate below 3%, (Birmingham, Bristol, Durham, Exeter, Oxford, Newcastle, Southampton, UCL, Leeds, Sheffield and Nottingham) and all are performing below their respective benchmarks with the exception of UCL. It is worth noting however that none of the 2012/13 non-continuation rates for the Russell Group are significantly statistically above or below their respective benchmarks.

5.2 Young full-time first degree entrants from LPNs and other neighbourhoods (Table T3b)

- a. In 2011/12, 6.3% of Young FT First Degree entrants from Low Participation Neighbourhoods (POLAR 3) were no longer in HE, (this is compared with 6.0% last year). The standard benchmark has further decreased this year to 3.9% (from 4.6%), which means that we performed worse than benchmark by 2.4%. There are only relatively small numbers of students in the population behind this PI, so the percentage figures should be treated with caution.
- b. The English Russell Group has 4.5% no longer in HE compared with a UK figure of 7.9% (excludes Scottish institutions) and an England figure of 7.9%.

Table A

Table 1a - Participation of under-represented groups in higher education - Young full-time first degree entrants 2012-13

University of Manchester Faculty/School

				State schools or colleges			NS-SEC classes 4-7			Low Participation Neighbourhood - POLAR 3			Low Participation Neighbourhood - POLAR 2		
Faculty/School	Total full-time first degree entrants	Number who are young	Percent who are young	Number with known data	Number from state schools or colleges	% from state schools or colleges	Number with known data	Number from NS-SEC classes 4,5,6 & 7	% from NS-SEC classes 4,5,6 & 7	Number with known data	Number from LPN	% from LPN	Number with known data	Number from LPN	% from LPN
Faculty of Engineering and Physical Sciences															
School of Chemical Engineering and Analytical Science	100	96	96.0	94	80	85.1	85	14	16.5	96	6	6.3	95	8	8.4
School of Chemistry	155	143	92.3	142	120	84.5	125	37	29.6	143	17	11.9	142	24	16.9
School of Computer Science	63	60	95.2	59	51	86.4	50	22	44.0	60	4	6.7	60	6	10.0
School of Earth, Atmospheric and Environmental Sciences	51	47	92.2	46	40	87.0	37	6	16.2	47	3	6.4	47	3	6.4
School of Electrical and Electronic Engineering	47	37	78.7	36	34	94.4	31	10	32.3	37	3	8.1	36	6	16.7
School of Materials	107	101	94.4	97	76	78.4	80	16	20.0	101	6	5.9	100	6	6.0
School of Mathematics	217	211	97.2	204	184	90.2	173	52	30.1	210	20	9.5	209	17	8.1
School of Mechanical, Aerospace and Civil Engineering	78	75	96.2	74	60	81.1	68	18	26.5	75	4	5.3	74	6	8.1
School of Physics and Astronomy	219	217	99.1	215	176	81.9	182	33	18.1	216	10	4.6	216	13	6.0
Foundation Years	215	172	80.0	166	150	90.4	137	37	27.0	171	19	11.1	170	28	16.5
EPS Total	1252	1159	92.6	1133	971	85.7	968	245	25.3	1156	92	8.0	1149	117	10.2
Faculty of Humanities															
Manchester Business School	218	207	95.0	206	160	77.7	170	38	22.4	206	10	4.9	205	19	9.3
School of Arts, Languages and Cultures	1016	956	94.1	948	698	73.6	781	159	20.4	955	66	6.9	948	66	7.0
School of Environment, Education and Development	220	187	85.0	181	137	75.7	155	36	23.2	187	14	7.5	186	15	8.1
School of Law	248	221	89.1	217	200	92.2	176	57	32.4	221	30	13.6	218	35	16.1
School of Social Sciences	473	451	95.3	448	328	73.2	377	100	26.5	449	37	8.2	448	43	9.6
Humanities Total	2175	2022	93.0	2000	1523	76.2	1659	390	23.5	2018	157	7.8	2005	178	8.9
Faculty of Life Sciences															
School of Life Sciences	505	492	97.4	490	410	83.7	417	97	23.3	492	31	6.3	489	34	7.0
Life Sciences Total	505	492	97.4	490	410	83.7	417	97	23.3	492	31	6.3	489	34	7.0
Faculty of Medical and Human Sciences															
School of Dentistry	84	67	79.8	67	49	73.1	54	13	24.1	67	7	10.4	67	6	9.0
Manchester Medical School	397	315	79.3	315	252	80.0	265	54	20.4	315	19	6.0	313	19	6.1
School of Nursing, Midwifery and Social Work	426	275	64.6	275	265	96.4	218	80	36.7	273	37	13.6	269	39	14.5
School of Pharmacy and Pharmaceutical Sciences	120	112	93.3	110	87	79.1	92	42	45.7	112	12	10.7	111	18	16.2
School of Psychological Sciences	238	208	87.4	207	183	88.4	177	53	29.9	208	25	12.0	208	31	14.9
MHS Total	1265	977	77.2	974	836	85.8	806	242	30.0	975	100	10.3	968	113	11.7
Grand Total	5197	4650	89.5	4597	3740	81.4	3850	974	25.3	4641	380	8.2	4611	442	9.6
University Standard Benchmarks						82.2			24.2			7.2			7.5
University Location Adjusted Benchmarks						83.2			25.1			8.1			8.7

Table B

Table 1a - Participation of under-represented groups in higher education - Young full-time first degree entrants 2012-13 - From State Schools/Colleges & NS-SEC classes Russell Group Institutions

Institutions				From state schools or colleges								From NS-SEC classes 4, 5, 6 & 7							
	Total full-time first degree entrants	Number who are young	% who are young	Number with known data	% with known data	Number from state schools or colleges	% from state schools or colleges	Standard Benchmark (%)	+/-	Location Adjusted Benchmark (%)	+/-	Number with known data	% with known data	Number from NS-SEC classes 4, 5, 6 & 7	% from NS-SEC classes 4, 5, 6 & 7	Standard Benchmark (%)	+/-	Location Adjusted Benchmark (%)	+/-
Total UK	351845	277140	78.8	268840	97.0	240010	89.3					226930	81.9	73240	32.3				
Total England	291550	229725	78.8	222680	96.9	198175	89.0					187680	81.7	61600	32.8				
The University of Birmingham	4350	4070	93.6	4000	98.3	3145	78.6	81.2	-	80.4	-	3430	84.3	770	22.4	23.4	-	23.6	-
The University of Bristol	3625	3450	95.3	3425	99.2	2035	59.4	75.6	-	72.7	-	2930	84.8	420	14.3	19.3	-	18.3	-
The University of Cambridge (#)	2610	2500	95.8	2490	99.6	1570	63.0	71.5	-	69.1	-	2135	85.4	250	11.7	16.2	-	15.7	-
Durham University	3065	2880	94.0	2860	99.3	1815	63.4	75.7	-	75.2	-	2440	84.6	305	12.5	19.7	-	19.5	-
The University of Exeter	3215	2960	92.1	2925	98.8	2020	69.1	76.3	-	74.3	-	2500	84.5	395	15.8	20.9	-	19.3	-
Imperial College of Science, Technology & Medicine	1285	1155	90.0	1100	95.2	710	64.7	74.9	-	70.9	-	865	74.8	160	18.4	17.8	-	17.7	-
King's College London	2955	2230	75.4	2170	97.4	1540	70.9	78.2	-	75.4	-	2030	91.2	490	24.2	22.1	-	21.8	-
The University of Leeds	5340	4900	91.8	4845	98.8	3690	76.2	82.3	-	82.1	-	4130	84.2	835	20.2	24.4	-	24.6	-
The University of Liverpool	3375	3025	89.7	2975	98.3	2595	87.3	84.3	-	86.2	-	2555	84.4	620	24.4	26.5	-	27.2	-
London School of Economics and Political Science	725	715	98.5	710	99.0	500	70.9	71.8	-	68.9	-	600	84.1	120	20.0	18.2	-	18.4	-
The University of Manchester	5195	4650	89.5	4595	98.9	3740	81.4	82.2	-	83.2	-	3850	82.8	975	25.3	24.2	-	25.1	-
The University of New castle-upon-Tyne	3700	3435	92.9	3370	98.0	2360	70.0	81.2	-	82.2	-	2905	84.5	560	19.2	24.2	-	24.7	-
The University of Nottingham	5350	4835	90.3	4785	99.0	3625	75.8	80.7	-	79.2	-	4110	85.0	785	19.1	23.8	-	23.5	-
The University of Oxford	2735	2635	96.3	2620	99.5	1505	57.4	71.2	-	68.7	-	2205	83.7	210	9.6	15.9	-	15.3	-
Queen Mary, University of London	2445	2090	85.6	2035	97.4	1745	85.8	83.9	-	81.4	+	1655	79.2	570	34.6	25.5	+	26.8	+
The University of Sheffield	3545	3305	93.2	3270	99.0	2785	85.2	80.8	+	81.4	+	2815	85.2	560	20.0	23.1	-	23.5	-
The University of Southampton	3315	2825	85.2	2785	98.6	2405	86.3	82.7	+	79.9	+	2400	85.0	540	22.4	24.6	-	22.3	-
University College London	2435	2245	92.2	2190	97.5	1440	65.7	75.2	-	71.0	-	1880	83.7	380	20.2	19.2	-	19.3	-
The University of Warwick	2540	2280	89.7	2215	97.2	1675	75.5	77.0	-	75.2	-	1905	83.6	370	19.5	19.6	-	19.1	-
The University of York	2965	2680	90.4	2560	95.4	1995	78.1	80.0	-	80.4	-	2260	84.3	470	20.7	23.0	-	23.0	-
Cardiff University	4495	3985	88.6	3910	98.2	3280	83.9	85.2	-		-	3385	85.0	740	21.9	27.0	-		-
The University of Edinburgh	3650	3330	91.2	3190	95.8	2145	67.3	77.7	-		-	2820	84.7	470	16.6	20.8	-		-
The University of Glasgow	3290	2700	82.1	2610	96.7	2250	86.3	81.3	+		-	2250	83.3	500	22.3	23.1	-		-
The Queen's University of Belfast	4060	3380	83.2	3300	97.6	3240	98.2	84.5	+		-	2715	80.3	840	31.0	25.9	+		-
Total Russell Group	80265	72260	90.0	70935	98.2	53810	75.9			n/a		60770	84.1%	12335	20.3			n/a	
Total English Russell Group	64770	58865	90.9	57925	98.4	42895	74.1			n/a		49600	84.3%	9785	19.7			n/a	

In this table 0, 1, 2 are rounded to 0. All other numbers are rounded up or down to the nearest multiple

Percentages are not subject to rounding, but those calculated on populations which contain fewer than 22.5 individuals are suppressed and represented

+/- shows that the indicator is significantly better/worse than its benchmark.

see relevant footnote in Notes to tables.

Table C

Table 1a - Participation of under-represented groups in higher education - Young full-time first degree entrants 2012-13 - From Lower Participation Neighbourhoods - POLAR 2 & POLAR 3 Classifications - Russell Group Institutions

Institutions				From low participation neighbourhoods - POLAR 3								From low participation neighbourhoods - POLAR 2							
	Total full-time first degree entrants	Number who are young	% who are young	Number with known data	% with known data	Number from LPNs	% from LPNs	Standard Benchmark (%)	+/-	Location Adjusted Benchmark (%)	+/-	Number with known data	% with known data	Number from LPNs	% from LPNs	Standard Benchmark (%)	+/-	Location Adjusted Benchmark (%)	+/-
Total UK	351845	277140	78.8	252155	99.7	27515	10.9					250040	98.9	28710	11.5				
Total England	291550	229725	78.8	229125	99.7	25050	10.9					227170	98.9	26530	11.7				
The University of Birmingham	4350	4070	93.6	4065	99.9	250	6.2	7.1		7.3		4050	99.5	265	6.6	7.3		7.6	
The University of Bristol	3625	3450	95.3	3440	99.6	115	3.3	5.7		5.0		3425	99.2	115	3.4	5.8		4.9	
The University of Cambridge (#)	2610	2500	95.8	2500	100.0	90	3.6	4.8		4.4		2490	99.6	85	3.5	4.7		4.4	
Durham University	3065	2880	94.0	2880	100.0	145	5.1	6.0		6.8		2865	99.4	140	5.0	6.1		7.0	
The University of Exeter	3215	2960	92.1	2950	99.8	140	4.7	6.5		6.1		2925	98.9	120	4.1	6.6		5.7	
Imperial College of Science, Technology & Medicine	1285	1155	90.0	1150	99.6	50	4.2	4.9		3.7		1145	99.0	50	4.2	5.0		3.9	
King's College London	2955	2230	75.4	2225	99.8	90	4.0	6.3		4.4		2200	98.7	95	4.2	6.6		4.9	
The University of Leeds	5340	4900	91.8	4890	99.8	405	8.3	7.4		8.6		4865	99.2	410	8.4	7.7		9.0	
The University of Liverpool	3375	3025	89.7	3015	99.6	290	9.6	8.0		9.6		2995	98.9	285	9.5	8.4		10.2	
London School of Economics and Political Science	725	715	98.5	715	99.7	25	3.4	5.3		4.1		705	98.7	30	4.5	5.5		4.5	
The University of Manchester	5195	4650	89.5	4640	99.8	380	8.2	7.2		8.1		4610	99.2	440	9.6	7.5		8.7	
The University of Newcastle-upon-Tyne	3700	3435	92.9	3425	99.7	250	7.4	7.0		9.4		3415	99.4	255	7.5	7.2		9.7	
The University of Nottingham	5350	4835	90.3	4830	99.9	270	5.6	7.0		6.7		4810	99.5	290	6.0	7.2		7.0	
The University of Oxford	2735	2635	96.3	2625	99.7	85	3.2	4.9		4.4		2615	99.2	80	3.0	4.9		4.4	
Queen Mary, University of London	2445	2090	85.6	2085	99.8	85	4.1	7.9	-	4.0		2065	98.7	120	5.9	8.2		5.2	
The University of Sheffield	3545	3305	93.2	3305	100.0	235	7.1	6.8		8.1		3280	99.2	245	7.5	7.0		8.4	
The University of Southampton	3315	2825	85.2	2815	99.6	225	8.1	7.6		6.4		2805	99.3	210	7.4	7.9		6.3	
University College London	2435	2245	92.2	2230	99.4	75	3.5	5.6		4.1		2215	98.6	75	3.5	5.7		4.4	
The University of Warwick	2540	2280	89.7	2265	99.4	115	5.0	5.9		5.3		2245	98.6	125	5.6	6.0		5.6	
The University of York	2965	2680	90.4	2670	99.5	175	6.6	7.1		8.3		2645	98.7	170	6.5	7.3		8.7	
Cardiff University	4495	3985	88.6	3970	99.7	310	7.9	8.3				3945	99.1	235	5.9	8.5			
The University of Edinburgh	3650	3330	91.2																
The University of Glasgow	3290	2700	82.1																
The Queen's University of Belfast	4060	3380	83.2	3370	99.8	170	5.0	7.8				3350	99.2	170	5.0	8.0			
Total Russell Group	80265	72260	90.0	66060	91.4%	3975	6.0			n/a		65665	90.9%	4010	6.1%			n/a	
Total English Russell Group	64770	58865	90.9	58720	99.8%	3495	6.0			n/a		58370	99.2%	3605	6.2%			n/a	

In this table 0, 1, 2 are rounded to 0. All other numbers are rounded up or down to the nearest multiple of

Percentages are not subject to rounding, but those calculated on populations which contain fewer than 22.5 individuals are suppressed and represent

+/- shows that the indicator is significantly better/worse than its benchmark.

see relevant footnote in Notes to tables.

Table D

HESA Performance Indicators in Higher Education: Participation of under-represented groups in higher education

T1a: Comparison of Young full-time first degree entrants 2006/07 to 2012/13 by Faculty and Sector

% from State Schools & Colleges										
Academic Year	EPS	HUMS	FLS	MHS	Manchester	Standard Benchmark	Location-Adjusted Benchmark	Total Russell Group	Total UK	Difference from Standard Benchmark
2006/7	83.6	71.9	84.3	79.7	77.2	80.6	80.7	75.0	87.8	3.4
2007/8	86.0	73.2	81.1	82.3	78.5	81.7	82.1	75.7	88.0	3.2
2008/9	84.9	72.9	82.8	85.8	78.6	80.9	81.0	75.9	88.0	2.3
2009/10	81.7	73.2	85.3	83.5	78.1	80.9	81.4	75.7	88.8	2.8
2010/11	83.6	70.7	84.6	84.2	77.5	80.9	81.6	74.7	88.7	3.4
2011/12	84.6	68.1	85.2	85.0	77.0	79.9	80.8	74.6	88.9	2.9
2012/13	85.7	76.2	83.7	85.8	81.4	82.2	83.2	75.9	89.3	0.8

% from NS-SEC Classes 4-7										
Academic Year	EPS	HUMS	FLS	MHS	Manchester	Standard Benchmark	Location-Adjusted Benchmark	Total Russell Group	Total UK	Difference from Standard Benchmark
2006/7	24.6	18.1	25.1	23.9	21.3	23.0	23.4	19.8	29.8	1.7
2007/8	24.2	17.4	22.8	23.1	20.5	22.8	23.4	19.6	29.5	2.3
2008/9	26.0	21.9	24.8	30.2	24.4	24.8	25.4	22.7	32.2	0.4
2009/10	22.9	19.5	21.1	24.4	21.3	22.8	23.3	19.5	30.0	1.5
2010/11	22.9	18.8	21.7	25.4	21.2	23.2	23.6	19.3	30.6	2.0
2011/12	21.9	16.7	22.9	26.5	20.4	22.4	22.8	18.9	30.7	2.4
2012/13	25.3	23.5	23.3	30.0	25.3	24.2	25.1	20.3	32.3	-1.1

% from Low Participation Neighbourhoods (POLAR2 & POLAR3)										
Academic Year	EPS	HUMS	FLS	MHS	Manchester	Standard Benchmark	Location-Adjusted Benchmark	Total Russell Group	Total UK	Difference from Standard Benchmark
2006/7	9.4	5.8	8.9	6.4	7.0	6.6	7.9	5.3	9.6	-0.4
2007/8	9.1	6.6	8.5	8.6	7.7	7.1	8.0	5.8	9.7	-0.6
2008/9	8.7	6.7	6.4	8.3	7.4	6.8	7.8	5.8	10.1	-0.6
2009/10	8.8	6.6	8.3	7.7	7.5	6.8	7.8	5.7	10.3	-0.7
2010/11	9.8	7.3	6.8	10.2	8.4	7.0	8.1	5.8	10.5	-1.4
2011/12 POLAR2	8.7	5.7	7.1	10.6	7.5	6.9	7.9	5.7	10.6	-0.6
2011/12 POLAR3	6.9	5.2	4.9	8.6	6.2	6.6	7.4	5.5	10.2	0.4
2012/13 POLAR2	10.2	8.9	7.0	11.7	9.6	7.5	8.7	6.1	11.5	-2.1
2012/13 POLAR3	8.0	7.8	6.3	10.3	8.2	7.2	8.1	6.0	10.9	-1.0

Table E

Table 3a - Non-continuation following year of entry - Full-time first degree entrants 2011/12

The University of Manchester - Faculty/School

	Young entrants								Mature entrants								All entrants								
Faculty/School	Number of entrants	Number continue or qualify at same HEI	% continue or qualify at same HEI	Number transfer to other HEI	Number not in HE	Number transfer & not in HE	% not in HE	% withdrawn from Manc.	Number of entrants	Number continue or qualify at same HEI	% continue or qualify at same HEI	Number transfer to other HEI	Number not in HE	Number transfer & not in HE	% not in HE	% withdrawn from Manc.	Number of entrants	Number continue or qualify at same HEI	% continue or qualify at same HEI	Number transfer to other HEI	Number not in HE	Number transfer & not in HE	% not in HE	% withdrawn from Manc.	
Faculty of Engineering and Physical Sciences																									
Foundation Year	133	98	73.68			35		26.3	23	16	69.6			7		30.4	156	114	73.1			42		26.9	
School of Chemical Engineering and Analytical Science	107	105	98.13			2		1.9	3	3				0		0.0	110	108	98.2			2		1.8	
School of Chemistry	166	154	92.77			12		7.2	7	6	85.7			1		14.3	173	160	92.5			13		7.5	
School of Computer Science	77	74	96.10			3		3.9	15	11	73.3			4		26.7	92	85	92.4			7		7.6	
School of Electrical and Electronic Engineering	47	39	82.98			8		17.0	15	10	66.7			5		33.3	62	49	79.0			13		21.0	
School of Earth, Atmospheric and Environmental Sciences	90	88	97.78			2		2.2	6	4	66.7			2		33.3	96	92	95.8			4		4.2	
School of Materials	169	156	92.31			13		7.7	9	7	77.8			2		22.2	178	163	91.6			15		8.4	
School of Mathematics	234	224	95.73			10		4.3	10	7	70.0			3		30.0	244	231	94.7			13		5.3	
School of Mechanical, Aerospace and Civil Engineering	128	123	96.09			5		3.9	2	2	100.0			0		0.0	130	125	96.2			5		3.8	
School of Physics and Astronomy	219	212	96.80			7		3.2	3	3	100.0			0		0.0	222	215	96.8			7		3.2	
EPS Total	1370	1273	92.92			97		7.1	93	69	74.2			24		25.8	1463	1342	91.7			121	0.0	8.3	
Faculty of Humanities																									
Combined Studies	4	4	100.00			0		0.0	0	0	0.0			0		0.0	4	4	100.0			0		0.0	
Manchester Business School	201	184	91.54			17		8.5	13	10	76.9			3		23.1	214	194	90.7			20		9.3	
School of Arts, Languages and Cultures	1184	1121	94.68			63		5.3	78	69	88.5			9		11.5	1262	1190	94.3			72		5.7	
School of Education	80	77	96.25			3		3.8	29	26	89.7			3		10.3	109	103	94.5			6		5.5	
School of Environment and Development	199	191	95.98			8		4.0	9	8	88.9			1		11.1	208	199	95.7			9		4.3	
School of Law	214	203	94.86			11		5.1	15	14	93.3			1		6.7	229	217	94.8			12		5.2	
School of Social Sciences	622	601	96.62			21		3.4	24	20	83.3			4		16.7	646	621	96.1			25		3.9	
Humanities Total	2504	2381	95.09			123		4.9	168	147	87.5			21		12.5	2672	2528	94.6			144	0.0	5.4	
Faculty of Life Sciences																									
School of Life Sciences	510	474	92.94			36		7.1	19	13	68.4			6		31.6	529	487	92.1			42		7.9	
FLS Total	510	474	92.94			36		7.1	19	13	68.4			6		31.6	529	487	92.1			42	0.0	7.9	
Faculty of Medical and Human Sciences																									
School of Dentistry	77	76	98.70			1		1.3	14	13	92.9			1		7.1	91	89	97.8			2		2.2	
Manchester Medical School	304	298	98.03			6		2.0	108	106	98.1			2		1.9	412	404	98.1			8		1.9	
School of Nursing, Midwifery and Social Work	255	224	87.84			31		12.2	165	151	91.5			14		8.5	420	375	89.3			45		10.7	
School of Pharmacy and Pharmaceutical Science	104	100	96.15			4		3.8	5	4	80.0			1		20.0	109	104	95.4			5		4.6	
School of Psychological Science	227	222	97.80			5		2.2	42	35	83.3			7		16.7	269	257	95.5			12		4.5	
MHS Total	967	920	95.14			47		4.9	334	309	92.5			25		7.5	1301	1229	94.5			72	0.0	5.5	
Grand Total	5351	5048	94.34	110	195	303	3.6	5.7	614	538	87.6	25	55	76	8.6	12.4	5965	5586	93.6	130	245	379	4.1	6.4	
University Benchmarks							3.1								8.7					0.00			3.7		

Table F

Table 3a - Non-continuation following year of entry - Full-time first degree entrants 2011/12

Russell Group Institutions

Institutions	Young entrants								Mature entrants								All entrants							
	Total full-time first degree young entrants	Number who continue or qualify at same HEI	% who continue or qualify at same HEI (%)	Number transferred to another UK HEI	% who transferred to another UK HEI (%)	Number no longer in HE	% no longer in HE (%)	Benchmark (%) +/-	Total full-time first degree mature entrants	Number who continue or qualify at same HEI	% who continue or qualify at same HEI (%)	Number transferred to another UK HEI	% at other UK HEI (%)	Number no longer in HE	% no longer in HE (%)	Benchmark (%) +/-	Total full-time first degree entrants	Number who continue or qualify at same HEI	% who continue or qualify at same HEI (%)	Number transferred to another UK HEI	% at other UK HEI (%)	Number no longer in HE	% no longer in HE (%)	Benchmark (%) +/-
Total UK	309865	285885	92.3	6165	2.0	17810	5.7		79045	69580	88.0	1185	1.5	8275	10.5		388915	355480	91.4	7350	1.9	26085	6.7	
Total England	261295	241035	92.2	5405	2.1	14855	5.7		65600	57755	88.0	1060	1.6	6785	10.3		326905	298800	91.4	6465	2.0	21640	6.6	
The University of Birmingham	4595	4390	95.5	80	1.7	130	2.8	3.0	390	345	87.8	5	1.0	45	11.2	9.5	4990	4735	94.9	80	1.6	175	3.5	3.5
The University of Bristol	2930	2825	96.4	40	1.3	65	2.3	2.5	200	175	88.9	0	0.5	20	10.6	7.0	3130	3000	95.9	40	1.3	90	2.8	2.8
The University of Cambridge (#)	2650	2615	98.8	10	0.3	25	0.9	1.8	125	115	93.6	0	0.8	5	5.6	7.9	2775	2735	98.5	10	0.4	30	1.1	2.1
Durham University	2955	2885	97.7	25	0.8	45	1.5	2.6	210	175	84.6	10	3.8	25	11.5	9.3	3160	3065	96.9	30	1.0	70	2.2	3.0
The University of Exeter	3255	3175	97.6	30	1.0	45	1.4	2.7	270	230	86.6	5	2.2	30	11.2	10.9	3530	3415	96.7	40	1.1	75	2.2	3.4
Imperial College of Science, Technology & Medicine	1310	1230	94.0	30	2.4	45	3.5	2.2	180	180	98.4	0	0.5	0	1.1	3.6	1490	1410	94.6	35	2.2	50	3.2	2.4
The University of Oxford	2690	2630	97.7	30	1.1	35	1.2	1.9	80	80	96.3	0	2.4	0	1.2	5.1	2775	2705	97.6	30	1.2	35	1.2	2.0
The University of New castle-upon-Tyne	3510	3390	96.6	40	1.1	80	2.3	3.1	270	250	94.0	0	0.7	15	5.2	8.0	3780	3645	96.4	40	1.1	95	2.5	3.4
Cardiff University	3910	3745	95.8	65	1.6	100	2.6	3.5	565	535	94.8	5	1.1	25	4.1	8.3	4470	4280	95.7	70	1.5	125	2.8	4.1
The University of Southampton	3570	3445	96.5	45	1.3	80	2.3	3.4	615	565	91.9	10	1.6	40	6.5	8.8	4185	4010	95.8	55	1.3	120	2.9	4.2
University College London	2215	2125	95.9	35	1.6	55	2.5	2.2	235	215	91.1	0	0.8	20	8.0	6.9	2455	2340	95.4	35	1.5	75	3.1	2.7
The University of Leeds	5845	5580	95.5	100	1.7	165	2.8	3.2	555	500	89.8	15	2.9	40	7.4	9.4	6400	6080	95.0	115	1.8	205	3.2	3.8
The University of Sheffield	4105	3940	96.0	55	1.3	110	2.7	3.0	295	265	88.6	5	1.7	30	9.8	9.4	4400	4205	95.5	60	1.4	140	3.2	3.4
The University of Nottingham	5165	4950	95.8	75	1.5	140	2.7	2.9	405	345	85.4	5	1.7	50	12.9	8.5	5570	5295	95.0	85	1.5	195	3.5	3.3
The Queen's University of Belfast	3200	3050	95.3	45	1.4	105	3.3	3.6	710	675	95.2	5	0.4	30	4.4	9.1	3910	3725	95.3	45	1.2	140	3.5	4.6
London School of Economics and Political Science	685	650	95.2	5	1.0	25	3.8	2.0	15	10	..	0	..	0	700	665	95.0	5	1.0	30	4.0	2.2
The University of Liverpool	3430	3265	95.1	55	1.5	115	3.4	3.5	470	420	88.9	10	1.7	45	9.4	9.1	3900	3680	94.3	60	1.6	160	4.1	4.2
The University of Manchester	5350	5050	94.3	110	2.0	195	3.6	3.1	615	540	87.6	25	4	55	8.6	8.7	5965	5585	93.6	130	2.2	245	4.1	3.7
The University of York	2805	2675	95.5	35	1.3	90	3.2	3.0	310	265	85.5	5	2.3	40	12.2	9.4	3115	2940	94.5	45	1.4	130	4.1	3.7
King's College London	2190	2030	92.7	80	3.7	75	3.5	2.8	690	630	91.6	5	0.9	50	7.5	6.9	2880	2660	92.5	90	3.1	130	4.5	3.8
The University of Edinburgh	2850	2705	94.9	25	0.9	115	4.1	2.6	355	320	90.7	5	0.8	30	8.5	9.7	3205	3025	94.5	30	0.9	145	4.6	3.4
The University of Warwick	2575	2445	95.1	30	1.2	95	3.7	2.5	260	225	85.1	0	0.8	35	14.1	5.6	2835	2670	94.2	30	1.1	135	4.7	2.8
Queen Mary, University of London	2385	2170	91.0	95	3.9	120	5.1	3.5	420	365	87.4	10	2.1	45	10.5	8.2	2805	2540	90.4	100	3.6	165	5.9	4.2
The University of Glasgow	2680	2500	93.4	40	1.5	135	5.1	3.1	605	520	86.6	10	1.3	75	12.1	9.8	3280	3025	92.1	50	1.5	210	6.4	4.3
Total Russell Group	76855	73465	96	1180	2	2190	2.8		8845	7945	90	135	2	750	8.5		85705	81435	95	1310	2	2970	3.5	
Total English Russell Group	66365	63645	96	990	1	1725	2.6		7205	6515	90	110	2	565	7.8		73580	70175	95	1100	1	2315	3.1	

In this table 0, 1, 2 are rounded to 0. All other numbers are rounded up or down to the nearest m

Percentages are not subject to rounding, but those calculated on populations which contain fewer than 22.5 individuals are suppressed and rep

see relevant footnote in Notes to tables.

+/- shows that the indicator is significantly better/worse than its benchmark.

© Higher Education Statistics Agency Limited 2014

Table G

Table 3a: Non-continuation following year of entry - Young full-time first degree entrants

The University of Manchester – Faculty cross year comparison 2006/07 to 2011/12

	Acad Year	Faculty of Engineering and Physical Sciences	Faculty of Humanities	Faculty of Life Sciences	Faculty of Medical and Human Sciences	Grand Total
Number of entrants	2011/12 Entrants	1370	2504	510	967	5351
Number continue or qualify at same HEI		1273	2381	474	920	5048
% continue or qualify at same HEI		92.92	95.09	92.94	95.14	94.34
Number transfer & not in HE		97	123	36	47	303
% withdrawn from Manc.		7.1	4.9	7.1	4.9	5.7
Number of entrants	2010/11 Entrants	1399	2833	530	1007	5769
Number continue or qualify at same HEI		1285	2656	471	950	5362
% continue or qualify at same HEI		91.9	93.8	88.9	94.3	92.9
Number transfer & not in HE		114	177	59	57	407
% withdrawn from Manc.		8.1	6.2	11.1	5.7	7.1
Number of entrants	2009/10 Entrants	1417	2883	534	956	5790
Number continue or qualify at same HEI		1303	2670	489	896	5358
% continue or qualify at same HEI		92	92.6	91.6	93.7	92.5
Number transfer & not in HE		114	213	45	60	432
% withdrawn from Manc.		8.0	7.4	8.4	6.3	7.5
Number of entrants	2008/9 Entrants	1560	3225	485	963	6233
Number continue or qualify at same HEI		1412	3001	457	904	5774
% continue or qualify at same HEI		90.5	93.1	94.2	93.9	92.6
Number transfer & not in HE		148	224	28	59	459
% withdrawn from Manc.		9.5	6.9	5.8	6.1	7.4
Number of entrants	2007/8 Entrants	1528	3046	493	972	6039
Number continue or qualify at same HEI		1386	2814	447	904	5551
% continue or qualify at same HEI		90.7	92.4	90.7	93.0	91.9
Number transfer & not in HE		142	232	46	68	488
% withdrawn from Manc.		9.3	7.6	9.3	7.0	8.1
Number of entrants	2006/7 Entrants	1202	2391	416	869	4878
Number continue or qualify at same HEI		1109	2253	378	826	4566
% continue or qualify at same HEI		92.3	94.2	90.9	95.1	93.6
Number transfer & not in HE		93	138	38	43	312
% withdrawn from Manc.		7.7	5.8	9.1	4.9	6.4

Notes: Internally, at Faculty level, we can only calculate a % "withdrawn from Manchester" as HESA do not release individualised data about transfers to other HEIs - other than for students we already know about in own institution return. So this % includes students who withdraw and students who transfer to other HEIs.

Table H

Table T7 - Participation of students in higher education who are in receipt of Disabled Students' Allowance (DSA):

Full Time First Degree Students - 2006/7 to 2012/13

	Total full-time first degree students	Number in receipt of DSA	Acad Year	% in receipt of DSA (%)	Bench-mark (%)	Russell Group % in receipt of DSA	England % in receipt of DSA	Standard deviation (%)
The University of Manchester	19975	1235	12-13	6.2	5.2	5.3	6.7	0.17
	20805	1220	11-12	5.9	4.6	4.7	6	0.16
	21500	1130	10-11	5.3	4.1	4.2	5.4	0.15
	21315	1040	09-10	4.9	3.7	3.6	4.9	0.14
	20725	1015	08-09	4.9	3.8	3.6	4.8	0.14
	19786	905	07-08	4.6	3.5	3.5	4.6	0.14
	18900	820	06-07	4.3	3.3	3.3	4.4	0.14

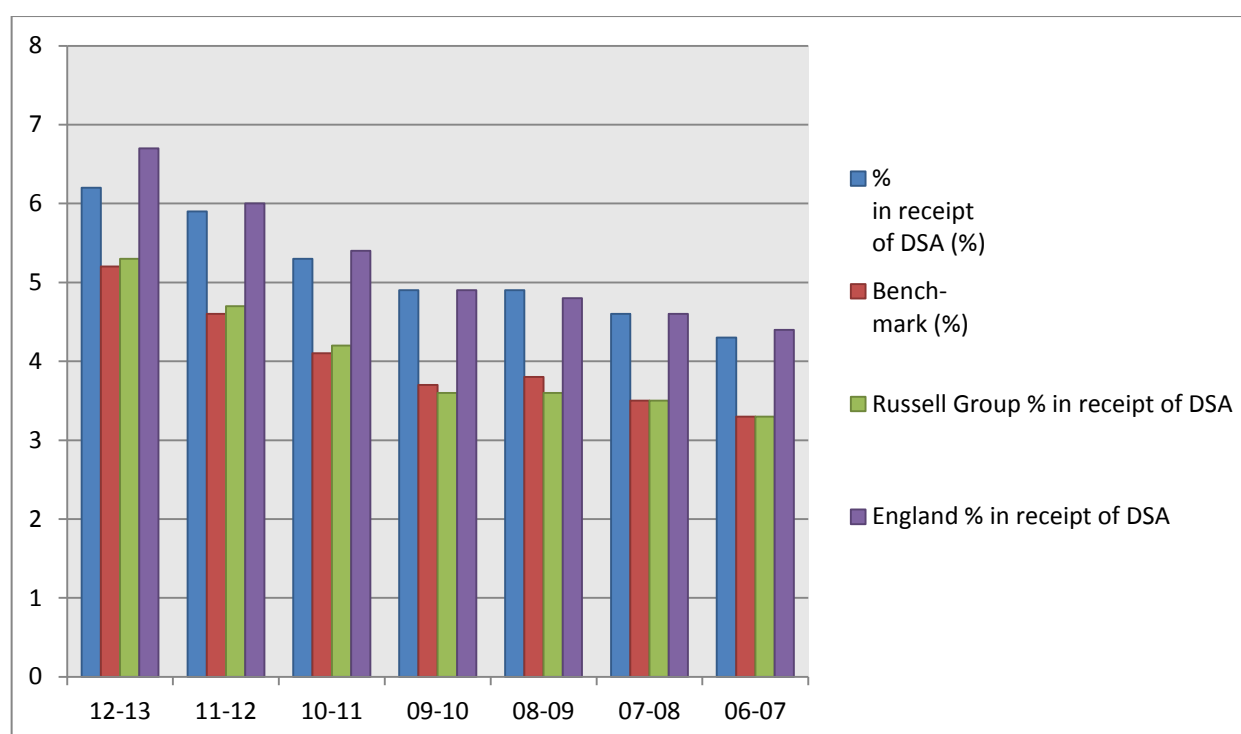


Table I

2013 entry – **please note that the data in this table is not HESA verified**

Percentage of LPN POLAR3 students per School (Source: 1st December 2013 dataset)

Faculty	School	LPN POLAR3 - Count	LPN POLAR3 - %
Faculty of Engineering and Physical Sciences	School of Mathematics	27	10.5%
	School of Computer Science	8	9.9%
	School of Electrical and Electronic Engineering	6	9.7%
	Faculty of Engineering and Physical Sciences	19	9.4%
	School of Chemistry	16	9.4%
	School of Physics and Astronomy	16	7.3%
	School of Materials	9	6.9%
	School of Earth, Atmospheric and Environmental Sci	5	6.0%
	School of Mechanical, Aerospace and Civil Engineering	4	4.7%
	School of Chemical Engineering and Analytical Science	4	3.8%
EPS Total		114	8.2%
Faculty of Humanities	School of Law	34	11.9%
	School of Environment, Education and Development	24	8.9%
	Manchester Business School	17	7.3%
	School of Arts, Languages and Cultures	73	6.3%
	School of Social Sciences	33	5.7%
Humanities Total		181	7.2%
Faculty of Life Sciences	Faculty of Life Sciences	41	7.6%
LS Total		41	7.6%
Faculty of Medical and Human Sciences	School of Nursing, Midwifery and Social Work	35	13.2%
	School of Psychological Sciences	21	11.5%
	Manchester Pharmacy School	12	10.5%
	School of Dentistry	6	7.4%
	Manchester Medical School	15	5.3%
MHS Total		89	9.6%
Grand Total		425	7.9%

Table J

1st December 2013 dataset – **please note that the data in this table is not HESA verified**

Percentage of students from low socio-economic groups (NS-SEC 4-7) per School (Source: 1st December 2013 dataset)

Owning Faculty	Owning School	Lower Socio-Economic Group - Count	Lower Socio-Economic Group - %
Faculty of Engineering and Physical Sciences	School of Mathematics	72	32.4%
	School of Computer Science	20	31.7%
	School of Earth, Atmospheric and Environmental Sci	22	29.7%
	Faculty of Engineering and Physical Sciences	48	29.1%
	School of Mechanical, Aerospace and Civil Engineering	22	28.2%
	School of Materials	27	26.0%
	School of Electrical and Electronic Engineering	14	24.1%
	School of Chemistry	32	23.4%
	School of Chemical Engineering and Analytical Science	19	20.9%
	School of Physics and Astronomy	35	18.9%
EPS Total		311	26.4%
Faculty of Humanities	School of Law	61	25.7%
	School of Social Sciences	99	20.2%
	School of Environment, Education and Development	41	19.1%
	Manchester Business School	36	18.9%
	School of Arts, Languages and Cultures	179	18.6%
Humanities Total		416	19.9%
Faculty of Life Sciences	Faculty of Life Sciences	123	27.1%
LS Total		123	27.1%
Faculty of Medical and Human Sciences	Manchester Pharmacy School	37	40.7%
	School of Nursing, Midwifery and Social Work	74	32.2%
	School of Psychological Sciences	46	29.5%
	School of Dentistry	18	25.4%
	Manchester Medical School	51	21.2%
MHS Total		226	28.6%
Grand Total		1076	23.8%