

A photograph of a person jumping in the air in front of a large, ornate stone building with Gothic architectural features. The person is wearing a blue jacket, dark pants, and a purple beanie. The building has a large archway through which the person is jumping. Above the archway, the words "UNIVERSITY OF MANCHESTER" are inscribed on the stone. In the top left corner, there is a purple box with the text "MANCHESTER 1824" and "The University of Manchester" below it.

MANCHESTER
1824

The University of Manchester

UNIVERSITY OF MANCHESTER

Orientation Guide January 2015
19—23 January 2015

Welcome to The University of Manchester



W

e're really glad that you have chosen to study at The University of Manchester this year. Studying in another country is an exciting opportunity for you to discover a different culture and meet new people.

We do also understand that travelling to a new country can sometimes be a confusing experience so we have prepared this guide to tell you about the Orientation Programme and to give you some general advice.

The Orientation Programme will help you to prepare to get the most out of living and studying in the UK.

Use this guide in conjunction with any arrival information you have received from your faculty or programme supervisor.

The events outlined in this guide will give you opportunities to find the important places on campus, get to know the area around your accommodation, learn about the skills you'll need to study in the UK, and meet lots of new and interesting people.

If you are coming to us on one of our exchange programmes, then you will find additional presentations that relate just to you on Tuesday 20 January. If you are joining the University to study for a full award with us then we look forward to seeing you at the events on the weekend, the presentations on Monday and the social events throughout the period.

CONTACT US

If you would like to know more about any of the events listed in this guide, or about coming to Manchester, get in touch: orientation@manchester.ac.uk or call us on + 44 161 275 7384

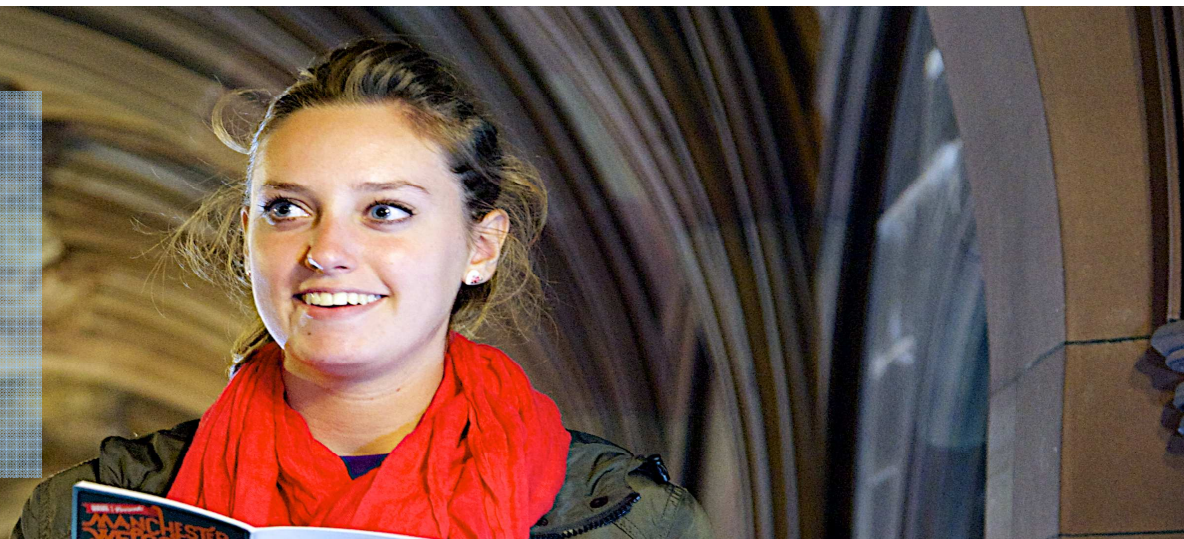


www.twitter.com/orientationuom



www.facebook.com/orientationuom

Programme of events— open to all students



Saturday 17 & Sunday 18 January

| Time | Activity | Location |
|-------------|-----------------------------|------------------------------|
| 10 am—3pm | Campus Tours (SATURDAY) | Students' Union, Oxford Road |
| 12—1pm | Area Tours | University Halls Helpdesks |
| 12—3pm | Campus Tours (SUNDAY) | Students' Union, Oxford Road |
| 2—3pm | Area Tours | University Halls Helpdesks |
| 7pm onwards | Film Night in the Union Bar | Students' Union, Oxford Road |

HALLS HELPDESKS

If you arrive in your accommodation over the weekend, we have Halls Welcome Desks available in Owens Park and Whitworth Park.

These teams will be running tours of the area at set times each day which you are welcome to join. If you are not in University Halls but living nearby you are also very welcome!

AREA TOURS

Saturday and Sunday 12pm & 2pm.

Discover the local area around your accommodation, find out how to get to campus and meet other students living close by.

Tours are guided by current students who can answer your questions about the area.

Fallowfield Halls: Meet at Owens Park reception

Victoria Park & City Halls: Meet at Whitworth Park Halls entrance

CAMPUS TOURS

Campus Tours will leave regularly from the Students' Union. Come along and take a walk round the main campus buildings, find out a little about our history and meet other new students. BUILDING 68 ON THE CAMPUS MAP

Monday 19 January

| Time | Activity | Location |
|----------------|--|--|
| 10—12pm | CORE PRESENTATIONS | University Place Lecture Theatre B |
| | Coffee | Foyer outside Lecture Theatre B |
| 2—3pm | Presentation on English Language Support | University Place Lecture Theatre B |
| 5.30pm onwards | Meet and Mingle | Bikos Café, Students' Union, Oxford Road |

MEET AND MINGLE

Come along and meet your Students' Union Officers and fellow new students. The Students' Union offers activities, community, sport, volunteering, great food, campaigning, societies and much more. BUILDING 68 ON THE CAMPUS MAP

CORE PRESENTATIONS

Core presentations are highly recommended as they will give you critical information on studying and living here in Manchester.

You will listen to a formal welcome to The University as well as presentations on studying in the UK, safety and security, the Students' Union, the city of Manchester, banking and how to get along with the British!

ENGLISH LANGUAGE SUPPORT

An optional session to find out more about the help available for you to improve your English language skills. Staff from the University's Language Centre will be joined by a panel of students to answer your queries.

Programme of events

Please note that on Tuesday, events are **compulsory** for ERASMUS, Study Abroad and Worldwide Exchange students. They are not suitable for students not on a one or two semester exchange.

Check the tables below for more information on the timing of your session.



Tuesday 20 January

| | ERASMUS STUDENTS | STUDY ABROAD & WORLDWIDE EXCHANGE STUDENTS |
|----------------|--|--|
| 9—9.30 am | Pack collection—Foyer area in front of Lecture Theatre B, University Place | |
| 9.30—10.30am | GUIDANCE ON ENROLMENT—Lecture Theatre B, University Place | |
| 11.00—11.30am | | Pack collection—Foyer area in front of Lecture Theatre B, University Place |
| 11.30—12.30 pm | | GUIDANCE ON ENROLMENT—Lecture Theatre B, University Place |
| 2—3pm | Session for Tier 4 Visa Students—Lecture Theatre B, University Place | |
| 5pm onwards | Get Involved in Your Union! Societies, Volunteering and Campaigning | Voice Office, Students' Union, Oxford Road |
| 6.30—10pm | World Quiz—OPEN TO ALL STUDENTS | Students' Union Bar |

Guidance on Enrolment Sessions and pack collection

Guidance Sessions on Tuesday morning in University Place (Building 37 on your map) are **MANDATORY** for all ERASMUS, STUDY ABROAD & WORLDWIDE EXCHANGE students, who must attend to receive crucial information about timetables, course unit enrolment and regulations. You can arrive up to 30 minutes before the scheduled start time to collect your information pack.

Tier 4 Visa Session

This session is mandatory for students on Study Abroad and Exchange programmes for one or two semesters who are coming to us under the Tier 4 scheme.

These students have certain obligations they must fulfil as part of their academic study and we, as sponsors, are also required to ensure that regulations are complied with. This session will take you through the process and enable us to collect the relevant documents.

Please bring with you – your passport, your visa, originals of your academic transcripts and a copy of your secure English Language test result (if applicable)

WORLD QUIZ

Tuesday night is Quiz night in the Students' Union Bar. Come with friends and make a team or come on your own and make new friends! The World Quiz is a light-hearted event so there's no pressure and you can order food and drinks (non alcoholic drinks are available) to eat whilst you play.

BUILDING 68 ON THE CAMPUS MAP

Programme of events—open to all students



Wednesday 21 January

| Time | Activity | Location |
|--|------------------------------------|--|
| Day free for enrolment and registration activities | | |
| 5pm onwards | Conversation Corner—Women Students | Voice Office, Students' Union, Oxford Road |

Thursday 22 January

| | | |
|--|--|--|
| Day free for enrolment and registration activities | | |
| 4.30pm—7.30pm | Walking Tour in the city followed by a Winter Warmer evening at the John Rylands Library | Meet at University Place on the Ground Floor |
| 5pm onwards | Conversation Corner—BME students | Activities Space, Students' Union, Oxford Road |

Friday 23 January

| | | |
|--|--|--|
| Day free for enrolment and registration activities | | |
| 1pm onwards | Conversation Corner—Student Parents and Carers | Activities Space, Students' Union, Oxford Road |

WALKING TOUR OF THE CITY FOLLOWED BY AN EVENING AT JOHN RYLANDS LIBRARY

The [John Rylands Library](#) is home to one of the world's finest collections of rare books and manuscripts. This is your opportunity to explore behind the scenes and enjoy a private visit!

On our way to the Library, we will take a guided walking tour for an hour around historic Manchester. Our city guides are extremely knowledgeable and you will find out a wealth of facts and information about your historic new home.

In the library itself you are free to wander and admire the collections amongst which students from our Creative Writing course will be reading short pieces of poetry and prose.

TICKETS COST £4 EACH AND CAN BE COLLECTED FROM THE ASKME HELPDESK IN UNIVERSITY PLACE—BUILDING 37 ON THE CAMPUS MAP



Additional Event Information for all students

Students' Union Events : In January, the Students' Union will be holding two large events which you may well want to attend;

Refreshers Fair, Tuesday 27 January, 12:00 – 16:00, Academy 1

Missed out the first time around? Then don't miss Refreshers Fair in January! You can pick up some freebies, enter some cracking competitions, sign up to societies and discover the great nights on offer at the Students' Union and Academy Venues.

Winter Pangaea, Saturday 24 January, Students' Union

Pangaea Festival is lost in space floating on an icy rock planet far in the future falling into a wormhole which will take it across space and time...

Join us on this journey for a once in a lifetime experience and prepare for 16 venues filled with the finest selection of live and electronic music from Manchester and around the world.

Run by students, for students, Pangaea is the hottest ticket in town.

Pangaea is the largest student festival in Europe, with 15 rooms of music, including all Manchester Academy venues, Students' Union and outdoor spaces. The festival combines talents from many of Manchester's successful independent promoters to showcase a diverse range of music and entertainment. Pangaea is now a member of the Association of Independent Festivals.



GENERAL INFORMATION

Accommodation

You should have already made arrangements with the University or with a private accommodation provider before you arrive in the UK.

Please note that accommodation is not provided as part of Orientation so you **MUST** check your contract to make sure your date of arrival reflects the actual day you want to move in.

AskMe Helpdesk

Between the 19th and 23rd January from 8am to 4pm you can always get help from our Student Ambassadors on the AskMe Desk in University Place, Building 37 on the map.

If you have general queries about the Orientation event, the campus or Manchester, then come along to the AskMe desk.

If you want to buy tickets for the city walking tours and John Rylands evening you can buy these from the AskMe desk.

Food

Meals are not provided (unless you are living in catered halls), but there are lots of places to get food and drinks on campus. We have listed some on the next page.



Food outlets on Campus

There are plenty of good food outlets across campus. Look out for the Kosher and Halal symbols or ask the friendly staff for advice.

Weekdays only

EATS canteen, University Place (Building 37 on the map) : Serves a choice of hot lunches

Potters café, Simon Building (on Brunswick Street) : Hot and cold lunches, and coffee

Alan Gilbert Learning Commons café—on the ground floor

Small World café , International Society (Building 69 on the map) : Canteen style hot lunches—very good value

Aardvark café, St. Peter's House (in the Chaplaincy Building on Oxford Road) : Daily selection of freshly made soups and salads

Weekdays and Saturday

Blackwells Bookshop Starbucks: on the ground floor

Everyday

Bikos Café in the Students Union: great value, good range of hot and cold food

SPAR, University precinct centre (next to Blackwells) : Convenience store with good value meal deals

Sainsburys, Oxford Road (next to the Stopford Building) :Small supermarket with a large range

Café Muse, Manchester Museum (Building 44 on the map) : good quality hot and cold

KRO bar, Oxford Road (on Oxford Road next to the International Society) : Large all-day menu with a good atmosphere

Costa Coffee (on Oxford Road next to the Stopford Building)

UNIVERSITY PLACE



Campus Map

MANCHESTER MUSEUM



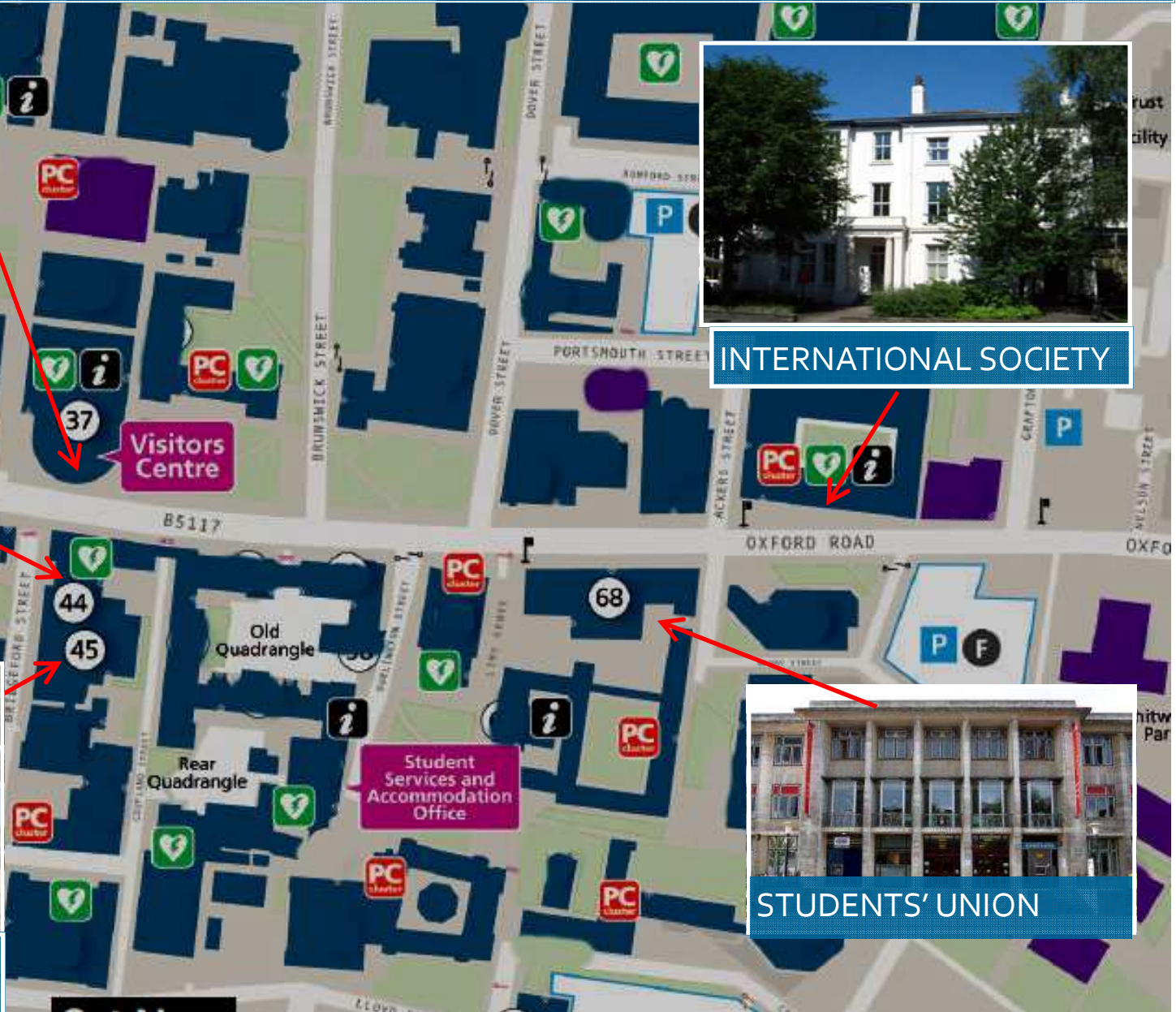
INTERNATIONAL SOCIETY



STUDENTS' UNION



RUTHERFORD BUILDING—
International Programmes Office



INTERNATIONAL SOCIETY

over 5,000 members from more than 120 countries



The International Society welcomes you to Manchester! We are here to make the most of your student life!

Trips around the UK every weekend to interesting places such as Oxford, York, the Lake District, North Wales and many more!

A Families' Group which aims to bring people in the same situation together so they and their children can make friends & have fun!

Language Classes: informal way of learning a new language with over 20 different languages to choose from!

Social Events such as **Cultural Evenings** hosted by volunteers from different countries, where you can learn about new cultures and meet people from your home country, as well as from other countries!

RocketWorld - an intercultural learning experience where you visit school children between 7 and 11 years old to promote international friendship

Small World Cafe - serving freshly cooked international dishes lunchtime every weekday. Halal and Vegetarian options available.



International Society has helped me to broaden my perspective of the world & to enrich my knowledge about other cultures.
- Gabriel Sanchez, Mexico.

It's more than just a community, it's a family.
- Sarbik Banarjee, India

University is about making friends and experiencing every possibility in life, I found all of it at the International Society
- Chen Daming, China

Learning, Love, Friendship, Peace and unforgettable memories that will always be cherished!
- Khalifa Aljabr, Saudi Arabia

www.internationalsociety.org.uk



www.facebook.com/theinternationalsociety



www.twitter.com/theintsoc



STUDENTS' UNION

Student life isn't just about studying. It's about making friends, taking a stand, having fun and exploring a new city.

We're the UK's largest Students' Union and we're run by students, for students. We provide you with the space, resources and money to make the most of your time at University.

The Students' Union is the voice of the student body, representing the views and interests of our students to the University and on a local and national scale. Through our elected Exec Team and our democratic decision-making processes, we ensure that all of our students have a say on how their Union is run.

We help the University to make decisions that are in the interest of our students and we support and run key campaigns for positive change.

We also offer training and development opportunities for students and we are responsible for over a thousand student representatives, ensuring your views are always heard.

The Students' Union is at the heart of student life and we've got an activity to suit everyone. Whether you're a committed fundraiser, have a passion for volunteering or simply want to meet like-minded folk, we've got it covered. With over 460 societies ranging from KnitSoc to Scuba Diving, you're sure to find a society for you. If there isn't one we'll help you create your own!

We know that leaving home for the first time can be daunting, so our Advice Service is on hand to help out with personal, academic, financial and accommodation issues. This service is completely free, totally confidential and run by professional advisors who are independent from the University.

In our building you can enjoy a freshly brewed coffee in Biko's Cafe, grab a meal deal from The Store or relax over a pizza and a drink in the Union Bar. We're a charity, so every penny you spend at the Students' Union is reinvested into developing and improving services for students.

The Students' Union is also home to Manchester Academy, one of the UK's most iconic music venues. We also stage Pangaea, Europe's largest student-led festival. Taking place three times a year, Pangaea sees over 5,000 students descend upon the Students' Union for a diverse range of music and entertainment.

WEB



@ ManchesterSU



facebook.com/ManchesterSU

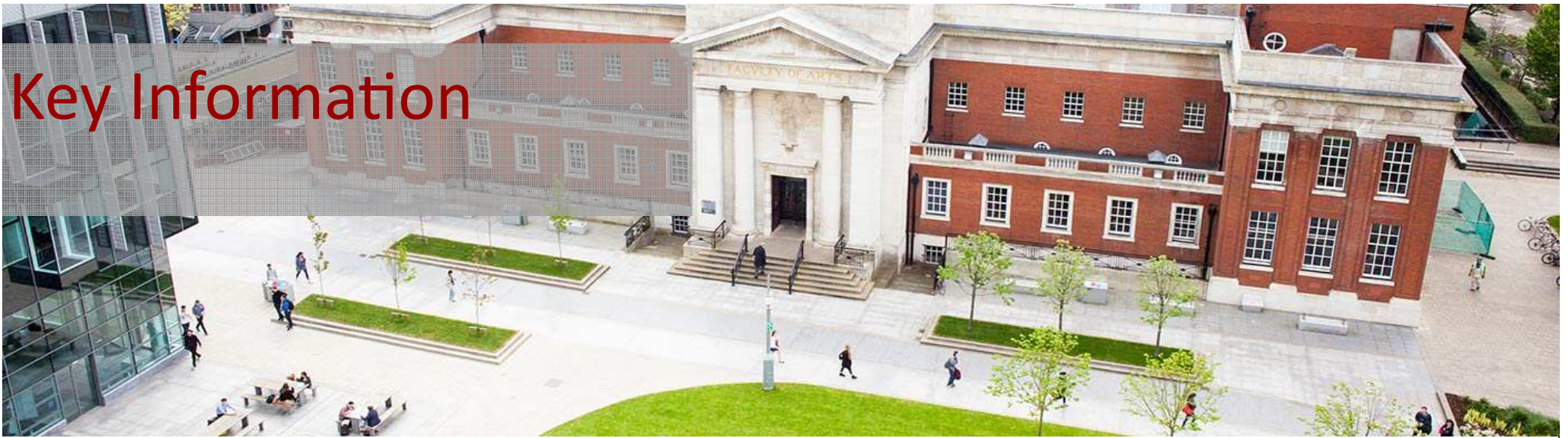
You can find us at

www.manchesterstudentsunion.com

Contact us

Tel +44 (0161) 275 2930





Key Information

LOCATIONS

Where is the International Programmes Office?

The International Programmes Office is located in the Rutherford Building on Coupland Street. To reach it you need to walk through the arch that has the Manchester Museum sign above it. If you walk straight ahead past the Manchester Museum, the Rutherford Building is the red brick one on the right hand side.

Where is the Student Services Centre?

On Burlington Street which is in between the new Alan Gilbert Learning Commons and the Whitworth Building. The Student Services Centre is half way down towards the main library building, on the right, down the steps.

Where can I find information about where buildings are when I am on campus?

There are large campus maps on signs around the campus. Otherwise you can collect a free campus map from one of the helpdesks at the Students' Union or University Place. You can also pick up campus maps throughout the year from the Visitors' Centre in the foyer of University Place. If you have a smartphone you can download the Manchester app <http://bit.ly/Q1U2as>

POLICE REGISTRATION

Certain nationalities are required to register with the police within 7 days of arrival in the UK. Please check the stamp in your passport/visa to see if you need to register. If you are required to register please email us at orientation@manchester.ac.uk and remember to include your student ID number. Although your appointment may not be for several weeks, this will not affect your immigration status. Until you receive your Police Registration Certificate, please carry your appointment letter with you especially if you are leaving the UK as an Immigration Officer may request it. It is a legal obligation to attend your appointment.

Transport

Transport for Greater Manchester <http://www.tfgm.com/>

147 Shuttle Service North to South Campus <http://www.route147.co.uk/>

MetroShuttle [tfgm.com/buses/Pages/metroshuttle.aspx](http://www.tfgm.com/buses/Pages/metroshuttle.aspx)

How do I get around the city?

The most convenient ways to get around the city are by walking, cycling or by bus. The Fallowfield campus is a short bus journey (allow 20-40 minutes) from the main campus and within walking distance (about 40-50 minutes). The Sackville Street end of the campus is next to the city centre. There are a number of different bus companies but the ones commonly used by students include Stagecoach, Magic Bus or First. You can either buy single tickets as you go from the bus driver or buy a bus pass in advance. You cannot buy return tickets and you need to tell your driver the destination if purchasing a single ticket. You can travel free between the Sackville Street campus and Oxford Road on the 147 bus by just showing your student card.

Which is the cheapest bus to take?

For the cheapest fares you need to look into weekly, term or annual tickets. Once bought, you can use them as many times as you like within the dates stated. Magic Bus (numbers 142 & 143) and First Bus (number 41) offer £1 fares anywhere between the city centre and south Manchester. They also offer weekly passes. Unirider passes can be used on both Stagecoach and Magic buses, and can be bought at the Students' Union, or from their website.

What about travel to other parts of the UK?

Train travel in the UK is expensive unless you book in advance. A ticket to London for instance would cost between £70 and £160 if bought on the day and only £19 if bought a month in advance. You can buy tickets online from web sites such <http://www.thetrainline.com/> and find out more at <http://www.nationalrail.co.uk/>

Coaches are usually considerably cheaper especially those from the Megabus company—find out more at <http://www.nationalexpress.com/> and <http://uk.megabus.com/> which has tickets on the day to London for £10.

You could also have a look at the International Society trips on their website <http://www.internationalsociety.org.uk/Trips.html>—they go all over the country and are very good value.

Explore the city of Manchester

<http://www.creativetourist.com/>

<http://www.timeout.com/manchester>

<http://www.visitmanchester.com/>



See you very soon!

International Programmes Office and
the Orientation Team