

MANCHESTER
1824

The University of Manchester

STUDENT ACCOMMODATION 2014/15



www.manchester.ac.uk/accommodation



Your experience as a student isn't only determined by the quality of your course and its teachers. Where you live is important to making the most of university too. With more than 8,000 rooms in 23 halls of residence, The University of Manchester offers something for everyone.



Augmented Reality app

This guide contains a variety of Augmented Reality content. To view this, download the Junaio app for iOS or Android and search for 'Manchester Student Accommodation' to activate.



iManchester app

The iManchester app is available for iOS and Android and contains a variety of information suitable for prospective students. From campus maps* to news and events and details on University Open Days, this is a great resource for navigating your way around campus and keeping up to date with events.

*Please note that the Fallowfield and Victoria Park campus maps are in the final stages of testing and will be added very soon.

Contents

Introduction	1	Visiting halls of residence	20
Accommodation guarantee	2	Accommodation after your first year	21
The benefits of University halls of residence	4	Before you apply	22
Types of accommodation	5	The application process	23
Other information	8	What happens next	25
How much does it cost?	9	Quick guide to Halls	26
City campus	10	Map	28
Victoria Park campus	14	Contact details	29
Fallowfield campus	18		

Introduction

Each of our halls of residence is unique in both character and design, and with such a variety of options it is difficult to convey fully their range and atmosphere. However, we hope that this brochure will provide you with enough information to begin to consider the type of accommodation you require. The map at the back of this brochure, as well as those on the iManchester app, give a sense of the hall locations.

For in-depth information on individual halls you should consult the relevant hall webpage on the Accommodation Office website:

www.manchester.ac.uk/accommodation

You'll also find other important information about accommodation, in particular the accommodation guarantee and the application process. We've tried to make this guide as comprehensive as possible but appreciate that there may be information you require that cannot be found here; if this is the case then please contact the Accommodation Office at the address on the right.

Residential Services are committed to ensuring that their facilities and support enhance your student experience. Whatever your accommodation requirements, you can be assured of our support and attention at all times.

The Accommodation Office

The Accommodation Office
The University of Manchester
The Student Services Centre
Burlington Street
Manchester
M13 9PL

tel +44 (0) 161 275 2888
fax +44 (0) 161 275 3213
email accommodation@manchester.ac.uk
www.manchester.ac.uk/accommodation

The University of Manchester owned and managed residences comply with the regulations set by the Universities UK (UUK) code of practice. For more information regarding the UUK code of standards for university halls of residence (covering England and Wales only) visit

www.universitiesuk.ac.uk/acop or
www.nusonline.co.uk/info/housing-advice



Accommodation guarantee



We offer the following guarantees to our students.

Undergraduates

Residence in University accommodation is guaranteed to:

- **all UK/EU undergraduates in the first year of study, provided they**
 - are coming to university alone;
 - are studying for their first degree;
 - have submitted an application for accommodation by 31 August of the year of entry;
 - have met the conditions of their offer by 31 August.

- **all overseas (ie non-EU) undergraduate students for the full duration of their studies, provided they**

- are coming to University alone;
- pay the overseas rate of tuition fees;
- have met the conditions of their offer;
- have submitted an application for accommodation by 31 August of the year of entry;
- reapply for accommodation in subsequent years for the full academic session;
- reapply for accommodation in subsequent years by the advertised due deadline (usually February).

- **visiting and exchange students who**

- are coming to University alone;
- are studying for the full academic session (ie September to June);
- have submitted an application for accommodation by 31 July.

Postgraduates

Residence in University accommodation is guaranteed to:

- **all overseas (ie non-EU) postgraduate students for the full duration of their studies, provided they**
 - are coming to University alone;
 - have firmly accepted a place at the University by 31 August of the year of entry;
 - have submitted an application for accommodation by 31 August of the year of entry;
 - reapply for accommodation in subsequent years by the advertised due deadline (usually February).
- **visiting and exchange students who**
 - are coming to University alone;
 - are studying for the full academic session (ie September to June or September to September);
 - have submitted an application for accommodation by 31 July.

Non-guaranteed accommodation

If your application falls outside the conditions of the guarantee you are still welcome to apply for University accommodation. In practice, the Accommodation Office is able to make provision for many undergraduates not meeting the 31 August deadline, as well as a good proportion of postgraduate students. It will advise you of any hall vacancies and, if no room is immediately available, it may be able to offer temporary accommodation until suitable permanent accommodation can be found.

Family and partner accommodation

We only have a limited number of rooms available to students with partners and families. As a consequence, they are in high demand and cannot be guaranteed to those requesting them. However, wherever possible, the Accommodation Office will endeavour to fulfil the requirements of accompanied students. With the assistance of the University's only approved housing bureau, Manchester Student Homes, many students with partners and families find flats and houses to rent in the private sector (see page 21 for further details).



The benefits of our halls of residence

Beside a wide variety of hall types there are other advantages to living in University accommodation.

- Help is always at hand: unique to University-owned halls are our teams of wardens, hall tutors and advisors. On-call in each residence, they provide you with welfare support and guidance whenever required.
- Clarity of cost: hall fees include contents insurance, Ethernet connection and all utility bills.
- A high level of security: the majority of halls have swipe card access systems and each campus has a comprehensive CCTV network and 24-hour security.
- The variety of hall options: including catered or self-catered, single or mixed sex halls, with en suite, standard or standard with washbasin rooms. Limited family accommodation is also available.



- An extensive range of facilities across the halls: computer clusters, sports facilities, music rooms, laundrettes, libraries, cheap on-site bars and junior common rooms or residents' associations organising sports and social events throughout the year.
- Provision for special requirements: many halls have adapted rooms and facilities for students with disabilities; catered halls can offer special diets; assistance for other medical conditions is also available (further information is obtainable from the Accommodation Office's disability co-ordinator).
- The student experience: life in halls offers the opportunity to encounter people from diverse social and cultural backgrounds, to develop social skills and widen intellectual horizons. It also facilitates learning outside the academic environment.
- A responsible landlord: we take our responsibilities seriously, endeavouring to provide at all times a comfortable living environment conducive to both study and relaxation.



Types of accommodation

With 23 halls of residence, The University of Manchester offers students more accommodation options than virtually any other higher education institution in the UK. Each hall has its own character and you can discover more about them by consulting the individual hall webpages on the Accommodation Office website. Here is a quick overview of the types available.



Undergraduate/postgraduate

Separate halls are available for undergraduates and postgraduates, but the University also has halls comprising a mix of both. In these, graduate students are roomed together.

A list of the University's undergraduate and postgraduate halls can be found in the quick guide to halls on page 26.



Catered halls

In catered halls, meals are provided and their cost is included in the residence fee, which makes budgeting easier. Varied and extensive menus are offered, vegetarian options are always available, and provision can be made for those with special dietary requirements. Dining arrangements vary according to hall; some have cafeteria-type facilities, others regard meal times as occasions to gather socially. The latter are the collegiate halls; tending to be smaller in size, their stable, familial atmosphere can prove a rewarding experience and their extensive range of extracurricular activities encourage leadership, foster social responsibility and develop teamwork.

Catered halls

Allen Hall	Owens Park
Ashburne Hall	St Anselm Hall
Dalton-Ellis Hall	St Gabriel's Hall
Hulme Hall	Woolton Hall

**FIND
OUT
MORE**

Full details of each hall can be found on the relevant hall webpage accessed via the link on the Accommodation Office website:
www.manchester.ac.uk/accommodation

Types of accommodation (continued)

Self-catered halls

Self-catered halls offer flexibility and independence: you determine your own food budget, prepare the meals and decide when and what to eat. Typically, those in self-catered halls are grouped in shared flats or corridors. Communal lounges and kitchens are provided, each of which has ample cupboard space, cookers, microwaves, refrigerators and freezers, but students are required to bring their own cutlery and crockery.

Self-catered halls

Burkhardt House*	Richmond Park
Canterbury Court	Sheavyn House*
Firs Villa	Victoria Hall
George Kenyon Hall	Weston Hall
Oak House	Whitworth Park
Opal Hall	Wright Robinson Hall
Opal Gardens	

*catered packages also available

**FIND
OUT
MORE**

Full details of each hall can be found on the relevant hall webpage accessed via the link on the Accommodation Office website: www.manchester.ac.uk/accommodation



Another catering option

If you choose self-catered accommodation but you would like to have meals prepared for you occasionally, FoodOnCampus outlets around the University are available as an alternative source of nourishment throughout the day.



Facilities: study bedrooms

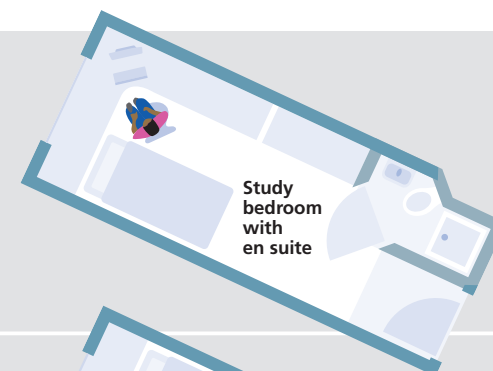
Study bedrooms are single occupancy and comprise bed, desk, chair, wardrobe and shelving; all have internet access. You may bring your own television but you are required to obtain your own television licence.

NB: Due to the diversity of halls, please note that **these are indicative floor plans only**.

En suite facilities

In addition to the standard fixtures and fittings (bed, desk, chair etc), en suite study bedrooms include an adjoining pod comprising a shower cubicle, washbasin and toilet. Fees for en suite facilities are higher than those for standard and standard washbasin rooms.

See right for a typical en suite room plan.



Standard wash basin facilities

In addition to the standard fixtures and fittings (bed, desk, chair etc) a standard washbasin room includes its own washbasin. Other facilities are shared with fellow residents. The ratio of facilities to residents is approximately 1:4 dependent upon the hall (for further details consult the relevant hall webpage). Fees for a standard washbasin room are less than those for en suite facilities but more than those for standard facilities.

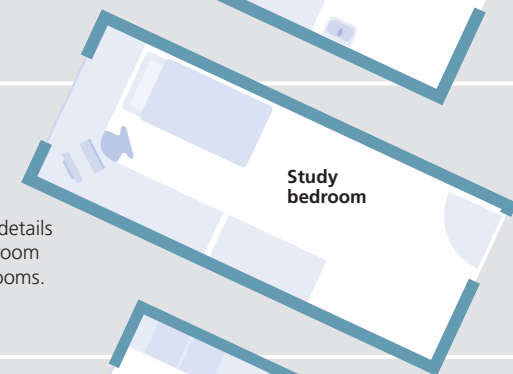
See right for a typical standard washbasin room plan.



Standard facilities

Standard rooms comprise standard fixtures and fittings (bed, desk, chair etc) with other facilities shared with fellow residents. The ratio of facilities to residents is approximately 1:4 dependent upon the hall (for further details consult the relevant hall webpage). Fees for a standard room are less than those for en suite or standard washbasin rooms.

See right for a typical standard room plan.



Gender mix

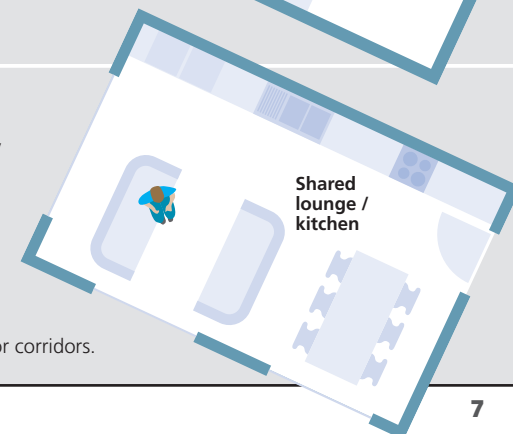
The majority of the University's residences are mixed sex, but two halls are single sex:

St Gabriel's Hall (female)

St Anselm Hall (male)

Ashburne Hall has separate female undergraduate areas and also mixed sex areas for both undergraduates and postgraduates.

Additionally, some mixed sex halls offer single-sex flats or corridors.



Other information

Family/partner accommodation

We offer a variety of accommodation specifically for students with families and partners. These include double rooms, and one, two and a few three-bedroom self-contained flats. Unfortunately, demand exceeds supply so we cannot guarantee this type of accommodation.

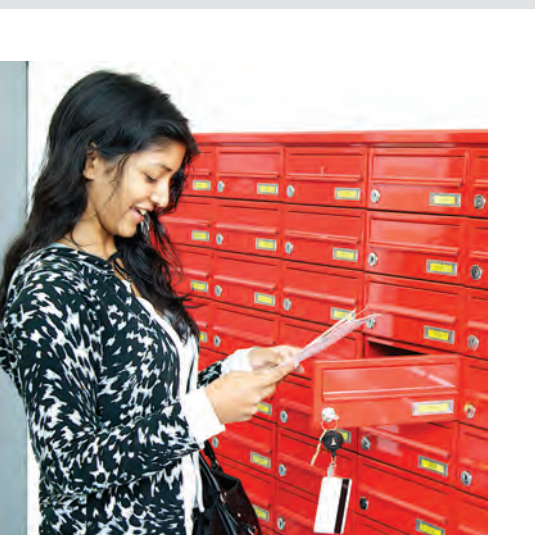
Our family/partner accommodation comprises the following:

- Horniman House
- Linton House

These residences are normally let for a 52-week period (from September to September). Full details of fees and facilities can be found on the Accommodation Office website.

You should note that family/partner residence fees may not include utility bills (electric, water, telephones etc); relevant webpages provide further information.

Houses and flats in the private rented sector are available through Manchester Student Homes (MSH). (see page 21 for further details).



To avoid possible inconvenience, we strongly advise you to come to Manchester without your partner and/or family initially and send for them once you have found suitable accommodation. You should also be aware that finding family accommodation for any period less than a full year is extremely difficult.

www.manchesterstudenthomes.com

Let length

The majority of undergraduate accommodation licence agreements are for 40 weeks, which includes the Christmas and Easter vacation periods. Forty-week licence agreements enable you to leave your possessions in your room during the holidays.

For postgraduates, most accommodation is for 51-52 weeks (the full calendar year). For those who require them, a number of rooms in certain halls are available for 40 weeks (details can be found on the relevant hall webpages). Postgraduates assigned 51-52 week licence agreements are able to stay in their rooms throughout the year.

Summer vacation residency

Each year a number of halls offer rooms over the summer vacation period (June to September). Full details will be published on the Accommodation Office website in May. Bookings and further enquiries should be made at that time to the individual halls concerned.

Junior common rooms / residents' associations

Most halls have an active junior common room (JCR) or residents' association (RA). All hall residents are members and the annual membership charge is included within the residence fees. Each JCR or RA comprises a committee, elected by hall residents, that organises the many hall social and sporting events. Students are strongly encouraged to participate in these activities, which are held throughout the year. For an insight into their range and frequency please access the relevant JCR or RA webpages via the Accommodation Office website:

www.manchester.ac.uk/accommodation

Students with a disability

A number of halls have adapted facilities for students with disabilities. The rooms are located on each of the accommodation campuses and offer specialised accommodation across a broad range of hall type. Wherever possible, we will adapt facilities as necessary to suit individual requirements.

Provision can be made for carers and for those requiring other assistance with a medical condition (installation of equipment for storage of medication, special dietary arrangements within catered halls, low/ground floor accommodation).

If you have any such accommodation requirements, please contact the Accommodation Office as soon as possible to ensure that these are fully in place prior to arrival. Information relating to your circumstances and requirements will be treated in the strictest confidence and will only be used by the Accommodation Office and your allocated hall to enable us to room you, as far as practicable, in suitable facilities.

Car parking

Students are advised not to bring cars to the University. Not all halls provide car parking facilities (there are none at all on the city campus) and in many it is limited so, with the exception of students who are Blue Badge holders, parking is not guaranteed. If you do decide to bring a car or motorcycle, you should check the hall webpage of your preferred hall(s) to see whether parking is available, whether special regulations govern use and whether it is subject to an additional charge. General enquiries about car parking should be directed to the individual hall; if you require disabled parking, then please contact the Accommodation Office for further information and advice.

Smoking policy

In compliance with legislation and in the interests of health, smoking is not permitted in any parts of our halls of residence, including study bedrooms.



Equality and diversity policy

The Accommodation Office and all halls of residence implement the University's equality and diversity policy, which aims to ensure that no student receives less favourable treatment, directly or indirectly, on the grounds of age, race, gender, religion, disability, sexual orientation or marital/parental status.

How much does it cost?

Fees for University accommodation are set in the spring prior to the commencement of session in September. Those detailed in the quick guide to halls on page 26 are correct at the time of going to press and relate only to the 2013/14 session. Fees for 2014/15 will be posted on the Accommodation Office website in spring 2014.

Your accommodation licence will specify the fees payable and the payment options available. The preferred method of payment is by direct debit. Fees for September to June lettings may be paid in three or seven instalments; lettings for a calendar year (postgraduate only) in four or nine instalments. Fees in University owned or managed halls include utility charges (electricity, water etc), contents insurance and internet connectivity.

City campus

As the city campus corresponds with the University's academic campus, the location offers a number of benefits, not least that facilities such as the libraries and Students' Union are on the doorstep.

Residents on the north of City campus are only a five minute walk from the heart of the city with its shops, clubs, restaurants, bars, theatres, cinemas, art galleries etc, while for those in the south it's only a short journey there on one of the many buses that travel along the Oxford Road corridor.

The pedestrian route between the two ends of the campus takes only ten minutes; there is also a bus service between both, which is free to students. Plenty of bus services are available to other residential areas such as Rusholme, Fallowfield and beyond.

For those with an interest in swimming and fitness, Manchester Aquatics Centre, host to aquatic sport during the 2002 Commonwealth Games, is sited between the North and South campuses, and is next to the University's Sugden Sports Centre with its extensive facilities.



Halls of residence within the city campus are:

George Kenyon Hall	93
Horniman House*	80
Opal Hall	85
Weston Hall	11
Whitworth Park	82
Wright Robinson Hall	9

* Family and partner accommodation (see website for full details)



The city

Manchester has it all: culture, music, shopping, nightlife, sport. Take a look at these pieces from writers at *The Mancunion* student newspaper to get a feel for your new home.

The best night spots in Manchester
by Tom Glasser bit.ly/crucialcity1

A postgraduate's guide to Manchester
by Stevie Spiegl bit.ly/crucialcity2

The Northern Quarter
by Ben Walker bit.ly/crucialcity3

Live music venue guide
by Joe Goggins bit.ly/crucialcity4

The Warehouse Project
by Eoghan Bennett bit.ly/crucialcity5

Avoiding chain restaurants
by Marcus Kelly bit.ly/crucialcity6

Theatre: what Manchester has to offer
by Josephine Lane bit.ly/crucialcity7

Manchester Arts Group
by Francesca Ried and Alice Marshall bit.ly/crucialcity8

The National Football Museum
by Matthew Barber bit.ly/crucialcity9

Getting around
by Ben Green bit.ly/crucialcity10

Parks in Manchester
by Jonathan Breen bit.ly/crucialcity11

The city for free
by Emma Bean bit.ly/crucialcity12

← Liverpool 35 m



Transport links

Centrally located, and just a short walk or bus ride from the University, both the train (bit.ly/crucialtrain) and coach stations (bit.ly/crucialcoach) are easy to find, while the airport isn't far (bit.ly/crucialplane).

↓ Manchester Airport 9 m

↙ North Wales & Snowdonia 45 m

↑ The Lake District 95 m

↗ York 70 m

↘ Leeds 40 m

→ Sheffield 35 m

PEAK DISTRICT
15m →

Going further

If you yearn for a bit more open space, a 40-minute train journey will take you to the centre of the Peak District national park, with some of the most beautiful natural landscapes in England and a whole host of outdoor adventures.

bit.ly/crucialpeaks

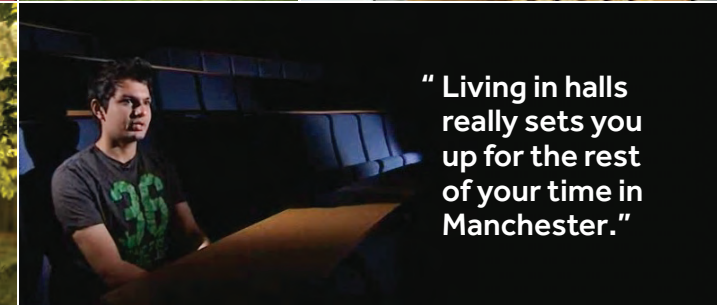
THIS ILLUSTRATION IS NOT INTENDED TO BE USED AS A MAP

Victoria Park campus

Victoria Park is situated between the city and Fallowfield residential campuses, so halls here are ideally placed for both academic and social activities.

A leafy conservation area, the campus provides a pleasant and tranquil atmosphere in which to live. Only 15 minutes walk to the University's academic campus, there are also frequent bus services operating along Wilmslow Road and Anson Road. The city centre is equally accessible – only ten minutes by bus.

Adjacent to Victoria Park is Rusholme – popularly known as The Curry Mile. Colourful and cosmopolitan, its many restaurants and shops offer an unparalleled range of cuisine and produce, including kosher and halal foods. Plenty of small supermarkets are nearby and a large Sainsbury's is only a short distance away in Fallowfield.



“ Living in halls really sets you up for the rest of your time in Manchester.”

Halls of residence within the Victoria Park campus are:

Burkhardt House	106
Canterbury Court	101
Dalton-Ellis Hall	102
Hulme Hall	105
Opal Gardens	104
St Anselm Hall*	107
St Gabriel's Hall*	108
Victoria Hall	121

* Single sex halls (see website for full details)





" Living in halls is a must-do of the Uni experience. There's always someone to talk to and something to do, support if needed, and lots of great friends to make. Dalton-Ellis Hall ticked every box for me and made my first year of Uni an amazing time. Highlights were the meals, places to meet up, staff and the mix of students."

Rob Marsland
Dalton Ellis 2010/11



" Halls are something you're only ever going to do once; an environment where everyone is sharing new experiences and gaining independence. It's the easiest way to meet people you'll ever get and so many people are like-minded. There are also great sport opportunities."

Simon Willis
Richmond Park 2011/12



Fallowfield campus

With its legendary social scene, Fallowfield is the acknowledged student suburb of Manchester. Its innumerable restaurants, pubs, bars, cafes and shops cater specifically for students.

Most halls are situated on the main bus route to the University and city centre, and services to both are frequent; the walk to the academic campus is a relatively comfortable one too. The Armitage Centre, one of the University's two sports venues, is located within campus grounds, and offers football, rugby, hockey and cricket pitches (all-weather and grass), squash and badminton courts, fitness classes (from cheerleading to kick-boxing) and much more.

A map illustrating the locations of all residential campuses and halls can be found on page 28.

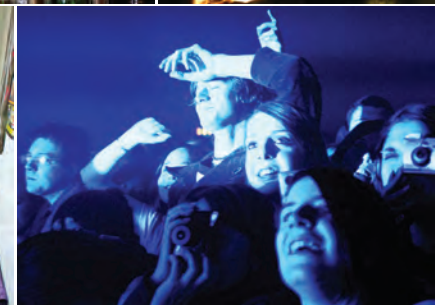
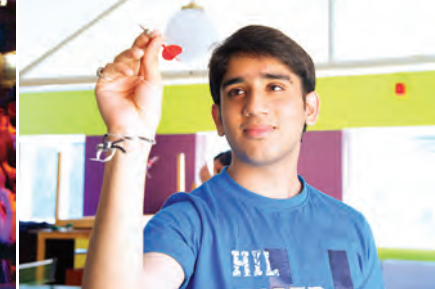


Halls of residence within the Fallowfield campus are:

Allen Hall	109
Ashburne Hall ^o	111
Firs Villa	117
Linton House*	113
Oak House	115
Owens Park	114
Richmond Park	116
Sheavyn House	112
Woolton Hall	118

^o Single-sex (female) areas

* Including family and partner accommodation (see website for full details)



Visiting halls of residence



Accommodation after your first year

After the first year of study students are welcome to reapply for University accommodation. The University of Manchester guarantee means that all overseas undergraduate and postgraduate students will be offered a room in a hall of residence, providing they have reapplied for accommodation by the advertised due date (usually the beginning of February of each year).

Home (ie UK/EU) students are not guaranteed accommodation after the first year but may still reapply and a substantial proportion of them manage to secure rooms in halls. Approximately 15% of accommodation is reserved for returning students.

If your reapplication is unsuccessful or if, like many returning students, you prefer to look for accommodation with friends in the private sector, the University recommends you make use of Manchester Student Homes.

Manchester Student Homes

Manchester Student Homes (MSH) is the University's only officially approved housing bureau. Based in Fallowfield and accessible via their website (www.manchesterstudenthomes.com), MSH serves Manchester's student community by providing information on good quality, well managed properties available in the private sector.

The MSH Code of Standards is aimed at promoting good practice and raising the standards of privately rented accommodation. All MSH-registered landlords have been invited to conform to the standards and details of those who have agreed to do so are listed on the website. As well as providing property information, MSH housing advisors offer free general housing advice, including contract checking and mediation services.

For more information on University leased housing and all other MSH services, please follow the link from the Accommodation Office website or contact them at:

Manchester Student Homes
Unit 1-3
Ladybarn House
Moseley Road
Manchester
M14 6ND

tel 0161 275 7680
fax 0161 275 7684
email manchesterstudenthomes@manchester.ac.uk
www.manchesterstudenthomes.com

Open House

In March each year, the Accommodation Office hosts an Open House day when each of the University's undergraduate halls of residence is open to prospective students and their families. An informal day, it provides an opportunity for you to visit as many of the halls as you wish, get a sense of their location, view facilities and study-bedrooms, and chat with current residents. A free shuttle bus service is available to transport you between the three accommodation campuses.

Open House 2014 will take place on Sunday, 16 March. Further information about the event can be found on the Accommodation Office website; full details of the day will be posted on the website in February.

Can't make Open House?

If you can't attend Open House, don't worry. Organised tours of the Fallowfield campus take place most Wednesdays between November and March (excluding during the Christmas closure), with a limited number of tours available over the summer. For more information please see:

www.manchester.ac.uk/undergraduate/opensdays/other-visits

Additionally, videos featuring current residents and illustrating various aspects of life in halls can also be found on the website, including information on social life, pastoral care, types of facilities (catered/self-catered, en suite/shared), locations etc.



What you need to know



Before you apply

Your success at university may depend not only on how hard you work and study but also on your environment.

Inappropriate accommodation could have an adverse impact on your efforts, so you need to think carefully about the type you require; it needs to reflect your preferred lifestyle and personality. Some of the factors you might want to consider are:

Location

The map at the back of this brochure gives you an idea of the location of the accommodation campuses. The city campus is precisely that – close to the heart of the city. Victoria Park is adjacent to the academic campus in a conservation area. Though further from the city centre, it offers a more tranquil atmosphere in which to live. Fallowfield is 15 minutes from the academic campus but is Manchester's acknowledged student residential area, offering a thriving social scene.

Cost

Remember, en suite facilities are more expensive than standard and standard with washbasin facilities.

Whether self-catered accommodation is cheaper than catered is for you to decide: you will either have to purchase and prepare your own meals in one type of hall or pay for them to be provided in another.

Gender mix

Do you require a single or mixed-sex hall or flat? We offer both but need to be aware of your preference. If the gender mix is important to you, make sure you select accordingly.

Hall size

Would you prefer to live within a small or large community? Smaller halls of residence tend to be more familial, enabling you to make friends quickly, but if your preference is for greater independence and a high level of social activity, then a larger hall may prove more suitable.

Hall facilities

Particular facilities may be important to you, so you need to choose appropriately. For example, if you enjoy sports, you may wish to be close to one of the University's sports halls or sports grounds. Some halls have libraries, music rooms, gymnasias and other facilities. You may require car parking, so you should note that car parking is not guaranteed and that there is none at all at any of the city campus halls (provision will always be made for Blue Badge holders).

Full details of hall facilities can be found on the relevant hall webpages within the Accommodation Office website, so check the information thoroughly before finalising your options.

Special requirements

While we can offer high-standard specialised accommodation for students with disabilities, not all halls have adapted facilities. If you have specific disability-related requirements, you should contact the Accommodation Office before submitting your application to find out whether your preferred options have the necessary facilities.

Finally...

It is for you to decide which halls of residence are most suitable for you. The guidance and advice of parents and friends may prove invaluable in the selection of your options, but ultimately it will be you, not they, who will be living in a hall of residence.

If you have any questions, queries or concerns about accommodation, contact the Accommodation Office, who will be happy to help. Better still, visit the Open House event in March (details on page 20) and see the our halls of residence for yourself.

You can also visit the Accommodation Office website to view all accommodation options. Hopefully they will provide you with some idea of the types of residences on offer and enable you to make a more informed choice when you come to apply.



The application process

You may submit an application for accommodation on receipt of the offer of a place of study at The University of Manchester. Applications are made online at: www.manchester.ac.uk/accommodation/applications-online

Undergraduates and postgraduates

Regardless of whether The University of Manchester is your first or insurance choice, in order to take advantage of the accommodation guarantee you must submit an application by 31 August of the year in which you plan to commence your studies.

Visiting and exchange students

If we've offered you a place at the University on an exchange programme, you must submit your application by 31 July of the academic year in which you plan to study here.

Submitting the online application

Before submitting an application you must open an online account. Full instructions on how to do this are provided on the website: www.manchester.ac.uk/accommodation/applications-online

Once you have opened your account, we will send you an email acknowledgement.

What you need to know (continued)

Most application questions are straightforward but, if you require assistance, you can use the 'help' icons provided throughout the online process. You should, however, take particular note of the following:

Addresses

We will get in touch with you mainly by email, so you should ensure that the email address you give us is accurate and active.

The current postal address details you enter on the application should be either the place where you normally live or your parents' or guardians' address.

Should you change either your postal or electronic addresses or your telephone numbers after you submit your application, you should notify the Accommodation Office as soon as possible. The University cannot accept responsibility for delays in postal or electronic communication as a result of a student's failure to notify it of amendments. Please make sure you set 'accommodation@manchester.ac.uk' as a 'contact' within your email account settings so that our emails do not get automatically filtered to your spam or junk mail folder.

Application details #1 and #2

These sections relate to the type of accommodation you require and you should be aware of the following in particular:

• Family/partner accommodation

If you require partner or family accommodation you will be contacted by the Accommodation Office afterwards to provide further information about your spouse/children.

• Requirement dates

Accommodation is offered for the duration of the academic sessions (September to June for undergraduates; September to June or September to September for postgraduates).

For further information about accommodation lengths, see page 8. Dates of current and future academic sessions can be found at:

www.manchester.ac.uk/aboutus/dates

Your application for accommodation is for one academic year only. For information on applications for subsequent years, see page 21.

If you are studying for less than a full academic year, you must specify the dates. You should also refer to the accommodation guarantee on page 2.

• Accommodation preferences

You are invited to nominate three preferred halls of residence. Please note, these are preferences only and should not be regarded as first, second and third choices.

The Accommodation Office will make every effort to offer you a room in one of your preferred halls and the overwhelming majority of students successfully secure one, but the popularity of some halls, particularly those that are self-catered, en suite or near the teaching campuses, mean that many are oversubscribed. As a consequence, we cannot guarantee to offer you a room in any of your hall options.

If we cannot match your preferences, we will try to room you in a hall with similar facilities to those of your preferences (self-catered, en suite etc). To maximise your chances of allocation to a preferred hall, you are advised to be flexible in your selection, for example, try not to confine your choice to one geographic location or hall type.

For information, you should be aware that, to ensure a balanced mix of students, the Accommodation Office does not room together students enrolled on the same programme.

• Special requirements: disability / medical considerations

If you have a disability or medical condition that you wish to be taken into account when allocating a room to you, you should signify this on the application form. You will be contacted by the Accommodation Office subsequently for further information and you may be required to provide medical evidence to support your request. The information provided will be treated in the strictest confidence. On verification of your claim, the Accommodation Office will endeavour as far as possible to meet your requirements.

You should be aware, however, that the Accommodation Office can only room on the information it possesses. If you do not advise of a disability or medical condition, and the room or hall offered subsequently proves inappropriate, relocation to another hall/room may not be possible.

• Final submission

When you have completed your online application, you are invited to make any amendments before submitting it. When you are sure the information supplied is correct, you may submit the application.

A final summary of details will be displayed and an acknowledgement of receipt will be issued confirming the information submitted and advising of the next stages of the application process.

If you have any queries in respect of the application process, please contact the Accommodation Office. Alternatively, please access the 'Application' page on the Accommodation Office website:

www.accommodation.manchester.ac.uk/applications-online

What happens next

As soon as we have confirmation from your academic School or department that you are definitely coming to The University of Manchester, we'll make you an offer of accommodation.

- If you're an undergraduate with an unconditional offer (ie you already have your results), an offer will be made to you by 31 July.
- If you're an undergraduate with a conditional offer, we will send you an offer after the publication of the A-level results, but before 11 September.
- If you're an overseas postgraduate, an offer will be made by 11 September.
- If you're a home (ie.UK/EU) postgraduate, you will receive a decision on your application by 11 September.
- If you're a visiting exchange student, you will receive a decision on your application by 11 September.



Important note

We'll send you your offer of accommodation by email. It's therefore important that you check your emails regularly over the summer period. If you're not able to do so, you should ensure that someone else is – for example, a parent or guardian. Please make sure you set 'accommodation@manchester.ac.uk' as a 'contact' within your email account settings so that our emails do not get automatically filtered to your spam or junk mail folder.

You (or your nominated representative) must reply to the offer immediately, as instructed in the email.

In order to accept the offer, you will be asked to make an online prepayment of £400 by the due date in the email.

If you don't respond as instructed in the email by the due date, you will forfeit the room and it will be offered to another student. If this occurs and you still require University accommodation, you may request reconsideration of your application, but you should be aware that a second offer will not be guaranteed. You should also be aware that in making its initial offer of accommodation to you, the Accommodation Office fulfils its guarantee to you. It is your responsibility, on receipt of that offer, to respond as instructed.

Quick guide to halls

Self-catered halls	Location	No of places	UG	PG	Let length	Average per week (1)	Internet access in room
Burkhardt House at Hulme Hall (4)	Victoria Park	129	✓		40	£125	✓
Canterbury Court	Victoria Park	117	✓		40	£125	✓
Firs Villa	Fallowfield	4		✓	51	£118	✓
George Kenyon Hall	City	302		✓	40/51	£131	✓
Linton House	Fallowfield	35		✓	52	£115	✓
Oak House	Fallowfield	1,088	✓	✓	40/51	£93	✓
Opal Gardens	Victoria Park	382	✓		40/51	£120	✓
Opal Hall	City	91		✓	51	£125	✓
Richmond Park	Fallowfield	503	✓		40	£125	✓
Sheavyn House at Ashburne Hall (4)	Fallowfield	237	✓		40	£125	✓
Victoria Hall	Victoria Park	438	✓		40	£118	✓
Weston Hall	City	514	✓	✓	40/51	£125	✓
Whitworth Park	City	1,173	✓	✓	40/51	£96	✓
Wright Robinson Hall	City	155	✓		40	£99	✓

Catered halls	Location	No of places	UG	PG	Contract length	Average per week (1)	Internet access in room
Allen Hall	Fallowfield	118	✓		40	£129	✓
Ashburne Hall	Fallowfield	173	✓	✓	40/51	£129	✓
Dalton-Ellis Hall	Victoria Park	279	✓		40	£135	✓
Hulme Hall	Victoria Park	323	✓		40	£135	✓
Owens Park	Fallowfield	1,048	✓		40	£129	✓
St Anselm Hall	Victoria Park	115	✓		40	£135	✓
St Gabriel's Hall	Victoria Park	101	✓		40	£129	✓
Woolton Hall	Fallowfield	180	✓	✓	40/51	£129	✓

Family/partner accommodation	Location	No of places	PG	Contract length	Average per week (1)	Internet access in room
Horniman House	City	39	✓	52	£158 - £180	✓
Linton House	Fallowfield	35	✓	52	£92 - £139	✓

Mixed sex (2)	Single sex	En suite	Standard washbasin	Standard	Adapted facilities (3)
✓		✓			
✓		✓			
✓				✓	
✓		✓			✓
✓			✓		
✓			✓	✓	
✓		✓			
✓		✓			✓
✓		✓			✓
✓		✓			✓
✓			✓	✓	✓
✓			✓		

Mixed sex	Single sex	En suite	Standard washbasin	Standard	Adapted facilities (3)	Catering
✓			✓			A
✓			✓	✓		A
✓		✓	✓	✓	✓	B
✓			✓			B
✓			✓			A
	✓M		✓			B
	✓F	✓	✓			C
✓		✓	✓			A

KEY A Breakfast and dinner weekdays; cash café weekends
 B Breakfast and dinner plus limited weekend catering
 C Breakfast and dinner weekdays

Notes

- 1 Fees quoted are indicative for 2013/14 only. You should consult the Accommodation Office website for precise prices. Fees for 2014/15 will be set in April 2014 and may be subject to increase. With the exception of some family accommodation, all fees include contents insurance and utility bills.
- 2 Some mixed halls offer single-sex areas/flats; consult individual hall webpages for details.
- 3 For full details on the type of adaptations in each hall please contact the Accommodation Office.
- 4 Catered packages available.



Accommodation map

Hall of residence	Postcode	Office
109 Allen Hall		114
111 Ashburne Hall	M14 6HP	114
106 Burkhardt House	M14 5RR	105
101 Canterbury Court	M14 5BX	102
102 Dalton Ellis Hall	M14 5RL	102
117 Firs Villa (PG)	M14 6YY	114
93 George Kenyon Hall (PG)	M13 9PY	24
80 Horniman House	M13 9NT	82
105 Hulme Hall	M14 5RR	105
113 Linton House	M14 6EQ	114
115 Oak House	M14 6HX	114
85 Opal Hall	M15 6BB	24
104 Opal Gardens	M14 5ES	102
114 Owens Park	M14 6HD	114
116 Richmond Park	M14 6YY	114
112 Sheavyn House	M14 6HP	114
107 St Anselm Hall	M14 5BX	102
108 St Gabriel's Hall	M14 5RP	105
121 Victoria Hall	M13 0FZ	102
11 Weston Hall	M1 3BB	9
82 Whitworth Park	M13 9WJ	82
118 Woolton Hall	M14 6WS	114
9 Wright Robinson Hall	M1 7JA	9

Administration

- 9 City (North) Administration Centre**
Wright Robinson Hall
tel +44 (0)161 306 3131
email northadmin.citycampus@manchester.ac.uk
- 24 City (Central) Administration Centre**
The Grosvenor Residences
tel +44 (0)161 306 3232
email centraladmin.citycampus@manchester.ac.uk
- 82 City (South) Administration Centre**
Grove House
tel +44 (0)161 275 4950
email southadmin.citycampus@manchester.ac.uk
- 114 Fallowfield Administration Centre**
tel +44 (0)161 306 9900 (24hrs)
email centraladmin.fallowfield@manchester.ac.uk
- 102 Victoria Park (Dalton Ellis) Administration Centre**
Dalton Ellis Hall
tel +44 (0)161 306 9840
email victoriaparkadmin@manchester.ac.uk
- 105 Victoria Park (Hulme Hall) Administration Centre**
Hulme Hall
tel +44 (0)161 306 9880
email victoriaparkadmin@manchester.ac.uk
- The Accommodation Office**
The University of Manchester
The Student Service Centre
Burlington Street
Manchester
M13 9PL
tel +44 (0)161 275 2888
email accommodation@manchester.ac.uk
www.manchester.ac.uk/accommodation

Front cover image key



Back cover image key



