

Governor Dashboard

Chris Wood

Objectives

- Developing an understanding of the information provided in the FFT Governor Dashboard.
- Considering how governors can use the new dashboard to support and challenge their schools.

Governor Dashboard - Introduction

Six key questions:

1. How does attainment and pupil progress at my school compare to the national average?
2. How are we performing in different subjects?
3. Do we have any under-performing groups of pupils?
4. How might the context of our school affect our performance?
5. How does pupil attendance compare to the national average?
6. What are the strengths and weaknesses of your school?

fft joining the dots

KS1 Self Evaluation Booklet (2013)
Self Valley Primary (9992000)

Version 2: January 2014

Key uses:

- Self evaluation
- Supplementary inspection data
- Impact of interventions
- Setting goals and targets
- Reporting to parents and governors

Key Audience:

- Senior Leadership Team
- Teachers

attainment summary

school context

future estimates

strengths & weaknesses

pupil groups

key features

- identify strengths & weaknesses quickly
- 4 sections/identical layout
- 3yr attainment & progress
- value added & cva data
- uses fft national rankings

Attainment – Pupil Results

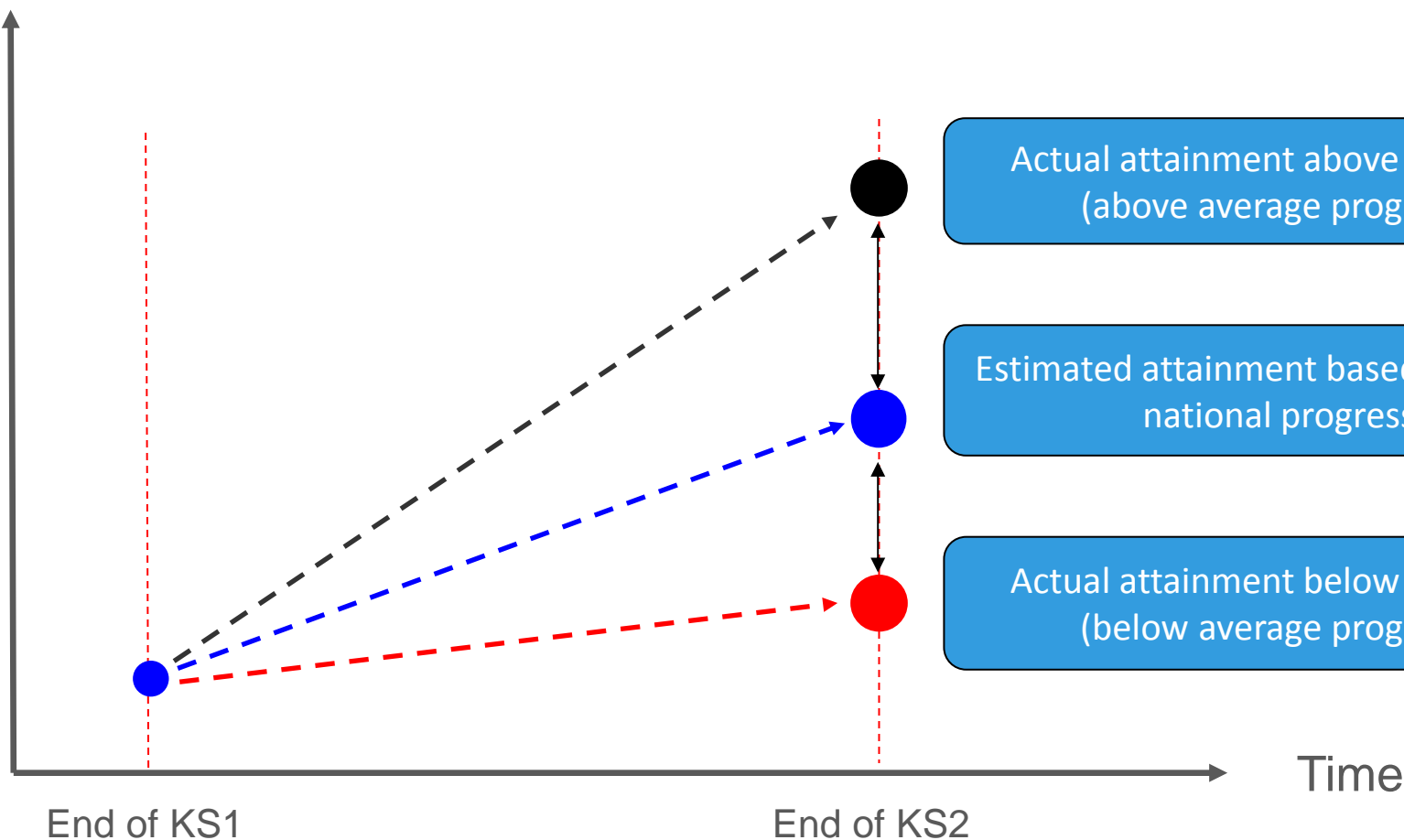
	Primary	Secondary
Threshold measure	% pupils achieving Level 4+ in reading, writing & maths	% of pupils achieving 5+ A*-C including English & maths
Average Point Score	Average Point Score (APS) in reading, writing & maths	Average Point Score (capped – best 8 subjects)

Level	Points
W	3
1	9
2	12 to 17
3	18 to 23
4	24 to 29
5	30 to 35
6	36 to 41

Grade	Points
A*	58
A	52
B	46
C	40
D	34
E	28
F	22
G	16
U	0

Achievement – Value Added Pupil Progress

Attainment



Governor Dashboard – Page 2



Self Valley Primary School (2013)

Pupil Results - Attainment (2013)

% Level 4+ (Re, Wri, Ma)



64%

Results are significantly below the national average (77%)

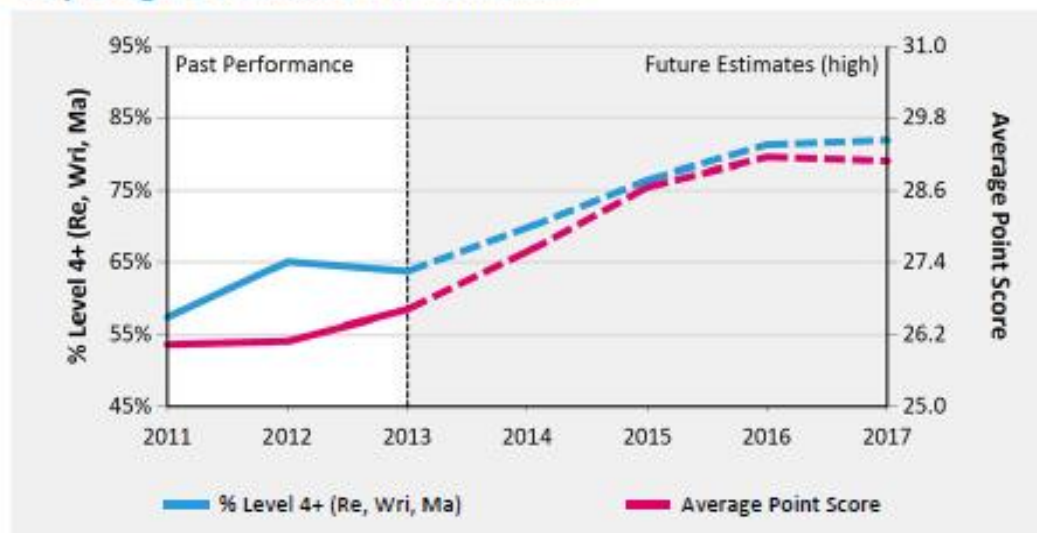
Average Point Score



26.5

Results are significantly below the national average (28)

Key Stage 2 Headline Performance



Pupil Progress - Achievement (2013)

% Level 4+ (Re, Wri, Ma)



8%

Progress is significantly above the national average of zero

Average Point Score



0.7

Progress is significantly above the national average of zero

Key Stage 2 Performance Summary

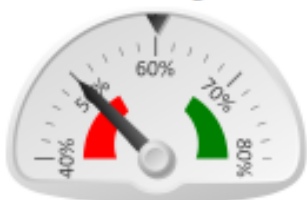
	Actual Results			Pupil Progress (Act vs Est)		
	2011	2012	2013	2011	2012	2013
Number of Pupils	80	84	81	-	-	-
% Level 4+ (Re, Wri, Ma)	● 56%	● 65%	● 64%	1%	-1%	★ 8%
% Level 5+ (Re, Wri, Ma)	10%	● 6%	16%	1%	-5%	7%
Average Point Score	● 26.0	● 26.2	● 26.5	-0.4	● -0.8	★ 0.7
% 2 Levels Progress - Reading	● 77%	90%	91%	● -8%	-3%	★ 8%
% 2 Levels Progress - Writing	90%	94%	97%	4%	2%	5%
% 2 Levels Progress - Maths	76%	86%	87%	-5%	-2%	6%

Relative Strengths and Weaknesses (3 years)

Stronger Areas	Weaker Areas
Other Asian Pakistani Higher ability	SEN School Action + SEN School Action Joined school in Yrs 5 or 6

Pupil Results - Attainment (2013)

% 5+ A*-C incl Eng & Maths



51%

Results are significantly below the national average (60%)

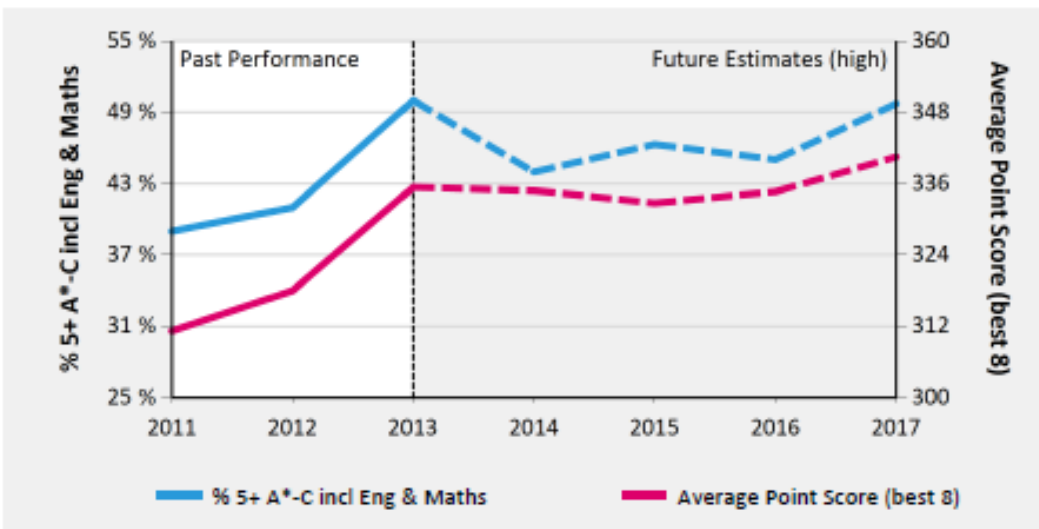
Average Point Score (best 8)



332

Results are in line with the national average (339)

Key Stage 4 Headline Performance



Pupil Progress - Achievement (2013)

% 5+ A*-C incl Eng & Maths



11%

Progress is significantly above the national average of zero

Average Point Score (best 8)



20

Progress is significantly above the national average of zero

Key Stage 4 Performance Summary

	Actual Results			Pupil Progress (Act vs Est)		
	2011	2012	2013	2011	2012	2013
Number of Pupils	193	185	195	-	-	-
% 5+ A*-C incl Eng & Maths	● 36%	● 40%	● 51%	★ 7%	★ 6%	★ 11%
Average Point Score (best 8)	● 309	● 315	332	★ 13	★ 9	★ 20
Average Grade (GCSE only)	● D	● D+	● D+	★ 0.2	★ 0.4	★ 0.4
% pupils achieving 5+ A*-A	● 3%	● 5%	11%	0%	2%	★ 5%
% 3 Levels Progress - English	63%	● 58%	66%	3%	-1%	★ 6%
% 3 Levels Progress - Maths	59%	72%	72%	★ 12%	★ 19%	★ 14%

Relative Strengths and Weaknesses (3 years)

	Stronger Areas	Weaker Areas
Pupil Groups	First Language not English Any Other Black African	First Language English Black Caribbean SEN School Action
Subjects	D&T Food Technology Sociology Art & Design	Physical Education/Sports St English Studies English Language & Literatur

Discussion

- How does the school compare to the national averages for attainment and achievement?
- What issues are raised to do with past results and future estimates in the:
 - Headline Performance Indicators?
 - Performance Summary?
- What 2 or 3 questions could you ask, related to this information?

Governor Dashboard – Page 3

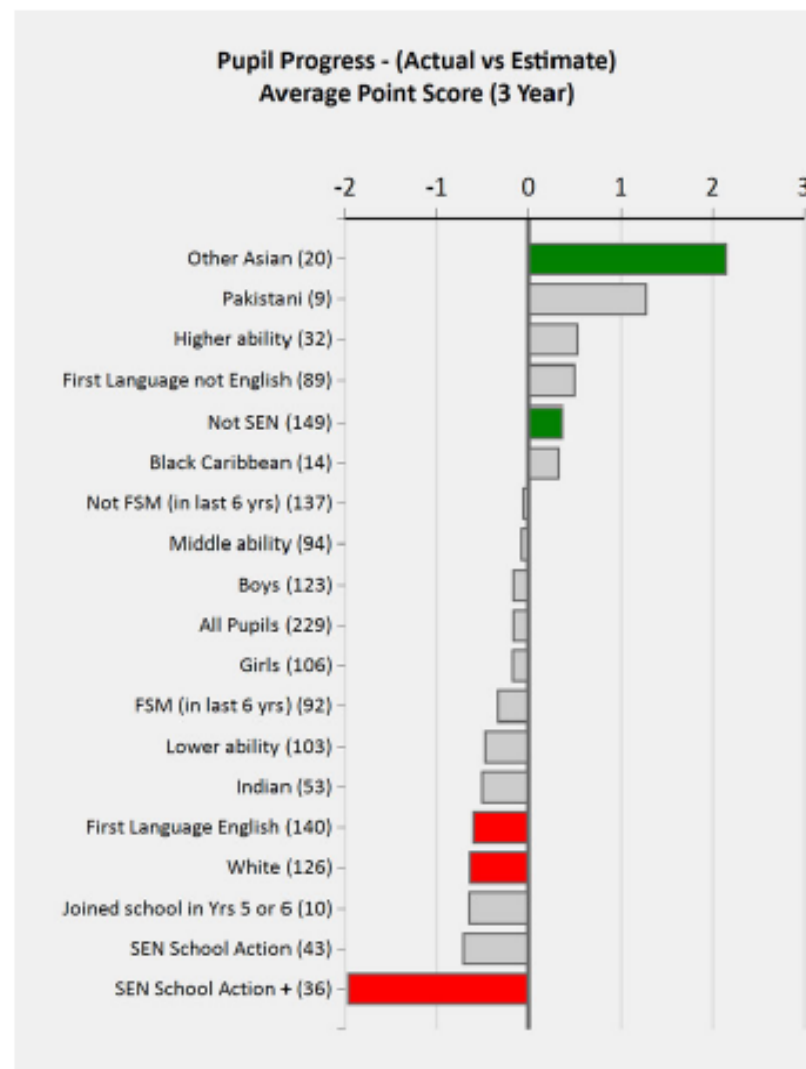


Self Valley Primary School (2013)

Key Stage 2 Subject Performance

	Actual Results			Pupil Progress (Act vs Est)		
	2011	2012	2013	2011	2012	2013
Pupils	80	84	81	-	-	-
Reading						
% Level 4+	● 76%	● 74%	● 75%	● -7%	● -7%	● 1%
% Level 4B+	● 48%	● 55%	● 62%	● -16%	● -18%	● 6%
% Level 5+	● 25%	● 17%	● 34%	● -7%	● -18%	● 8%
Average Point Score	● 26.0	● 25.3	● 26.2	● -1.2	● -1.7	● 0.4
Writing						
% Level 4+	75%	● 71%	77%	3%	0%	★ 13%
% Level 5+	25%	● 11%	● 18%	★ 16%	-3%	5%
Average Point Score	26.9	● 25.8	26.5	★ 1.2	-0.1	★ 1.3
Mathematics						
% Level 4+	● 69%	● 76%	● 74%	-6%	-5%	2%
% Level 4B+	● 53%	● 63%	● 54%	-6%	-3%	-2%
% Level 5+	● 20%	● 28%	● 27%	-4%	2%	6%
Average Point Score	● 26.0	● 26.7	● 26.5	-0.4	-0.4	0.5

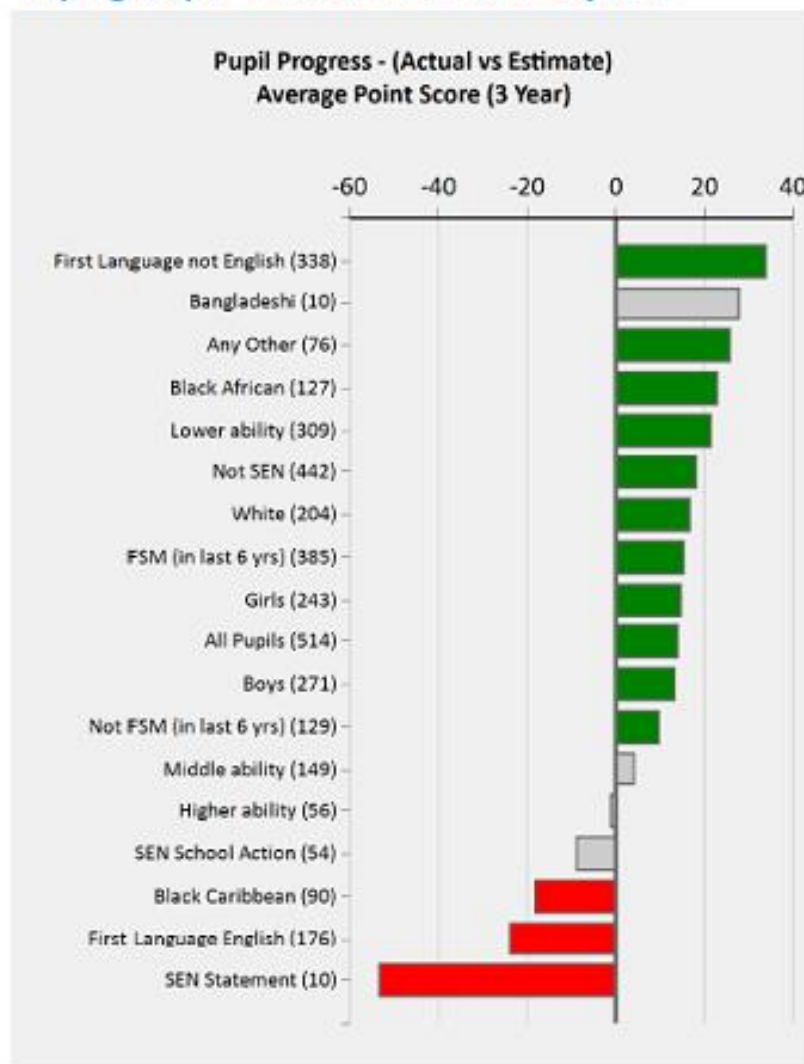
Pupil Groups: Achievement over 3 years



GCSE subject performance (2013)

	Pupils	Actual Results			Pupil Progress (Act vs Est)		
		Average Grade	%A*-A	%A*-C	Average Grade	%A*-A	%A*-C
Art & Des(Textiles)	12	C+	17%	75%	0.7	12%	12%
Art & Design	24	A-	46%	100%	★ 1.4	★ 28%	★ 24%
Biology	41	B+	39%	98%	★ 0.5	6%	★ 11%
Chemistry	41	B	39%	95%	0.2	5%	★ 9%
Drama & Theat.Stds	16	B-	31%	81%	★ 0.9	★ 20%	★ 20%
English	63	E	0%	2%	-0.2	0%	● -13%
English Language	114	C+	11%	93%	★ 0.4	-1%	★ 24%
English Literature	123	C	22%	54%	★ 0.3	★ 10%	● -9%
French	12	C+	17%	67%	0.3	-5%	10%
Geography	26	C	15%	58%	-0.1	-6%	-3%
History	20	C	30%	60%	★ 0.6	10%	7%
Inform Comm Tech	46	C+	11%	85%	★ 0.7	-3%	★ 25%
Mathematics	196	C-	14%	63%	★ 0.7	★ 5%	★ 15%
Media/Film/TV Stds	37	C	16%	76%	★ 0.5	3%	★ 16%
Physics	41	B	29%	98%	0.2	-4%	★ 10%
Portuguese	6	A	67%	83%	0.9	54%	10%
Science (Core)	69	C	9%	75%	★ 0.9	4%	★ 31%
Science: Additional	50	C+	10%	80%	★ 0.9	3%	★ 28%
Sociology	32	B	38%	78%	★ 1.1	★ 26%	★ 17%
Sport/P.E. Studies	18	D-	0%	11%	● -1.4	-11%	● -54%
Statistics	22	A-	50%	100%	★ 0.9	★ 19%	★ 19%
Turkish	53	B+	51%	96%	● -0.4	● -16%	2%

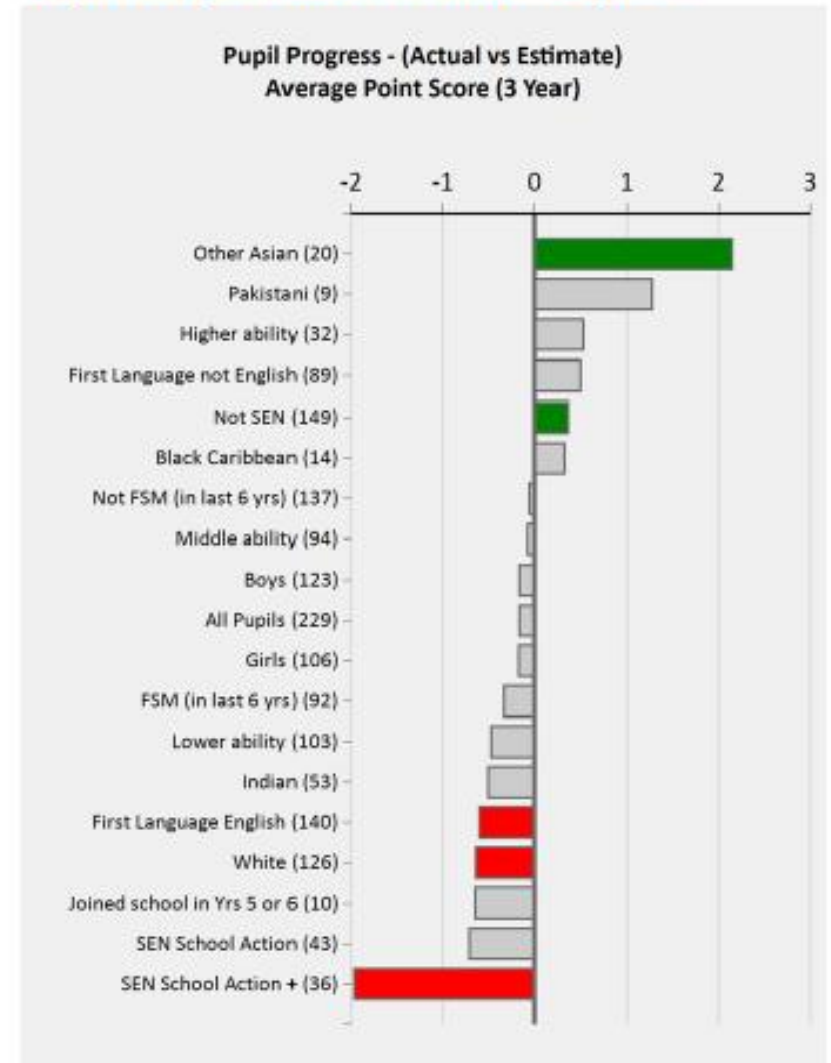
Pupil groups - achievement over 3 years



Relative Strengths and Weaknesses (3 years)

Stronger Areas	Weaker Areas
Other Asian	SEN School Action +
Pakistani	SEN School Action
Higher ability	Joined school in Yrs 5 or 6

Pupil Groups: Achievement over 3 years



Discussion

- Are there any significant areas of strength and/or weakness that are raised by this information?
- What 2 or 3 questions could you ask, related to this information?

Governor Dashboard – Page 4



Self Valley Primary School (2013)

Pupil Context (Year 6, 2013)

		Pupils	School	National
Summary	All Pupils	81	100%	100%
	Girls	42	52%	49%
	Boys	38	48%	51%
Prior Attainment	Higher ability	11	14%	33%
	Middle ability	26	32%	34%
	Lower ability	39	48%	33%
SEN	SEN School Action	15	19%	12%
	SEN School Action +	14	17%	8%
	Not SEN	50	62%	77%
Free School Meals	FSM (in last 6 yrs)	33	41%	31%
	Not FSM (in last 6 yrs)	47	58%	69%
Ethnicity	White	47	58%	78%
	Black Caribbean	5	6%	3%
	Black African	3	4%	4%
	Pakistani	6	7%	4%
	Other Asian	4	5%	2%
First Language	First Language not English	33	41%	15%
	First Language English	48	59%	85%
Mobility	Joined school in Yrs 5 or 6	5	6%	7%

School Absence (Year 1 to Year 6, 2013)

		Pupils	Absence		Persistent Absentees	
			School	National	School	National
Summary	All Pupils	539	5%	5%	6%	4%
	Girls	249	5%	5%	7%	4%
	Boys	290	5%	5%	5%	4%
Prior Attainment	Higher ability	146	4%	4%	1%	2%
	Middle ability	176	5%	5%	6%	3%
	Lower ability	208	6%	6%	10%	7%
SEN	SEN School Action	65	5%	6%	10%	7%
	SEN School Action +	50	6%	6%	6%	8%
	SEN Statement	1	♦	7%	♦	11%
	Not SEN	422	5%	4%	6%	4%
Free School Meals	FSM (in last 6 yrs)	233	5%	6%	8%	8%
	Not FSM (in last 6 yrs)	308	5%	4%	5%	3%
Ethnicity	White	299	5%	5%	7%	4%
	Black Caribbean	27	6%	5%	7%	6%
	Black African	27	3%	4%	0%	3%
	Indian	88	4%	5%	3%	4%
	Pakistani	23	9%	5%	17%	5%
	Other Asian	66	4%	5%	3%	4%
First Language	First Language not English	225	5%	5%	6%	5%
	First Language English	314	5%	5%	6%	4%

Year 1 Attendance



94.3%

Year 2 Attendance



95.1%

Year 3 Attendance



94.6%

Year 4 Attendance



95.8%

Year 5 Attendance



94.9%

Year 6 Attendance



95.9%

Pupil Context (Year 11, 2013)

		Pupils	School	National
Summary	All Pupils	200	100%	100%
	Girls	92	46%	49%
	Boys	108	54%	51%
Prior Attainment	Higher ability	23	12%	32%
	Middle ability	49	25%	35%
	Lower ability	109	55%	33%
SEN	SEN School Action	27	14%	11%
	SEN School Action +	4	2%	6%
	SEN Statement	2	1%	4%
	Not SEN	167	84%	79%
Free School Meals	FSM (in last 6 yrs)	134	67%	26%
	Not FSM (in last 6 yrs)	66	33%	74%
Ethnicity	White	73	37%	80%
	Black Caribbean	34	17%	3%
	Black African	53	26%	4%
	Bangladeshi	2	1%	1%
	Other Asian	2	1%	2%
	Any Other	34	17%	3%
First Language	First Language not English	128	64%	12%
	First Language English	72	36%	88%
Mobility	Joined school in Yrs 10 or 11	8	4%	2%

School Absence (Year 7 to Year 11, 2013)

		Pupils	Absence		Persistent Absentees	
			School	National	School	National
Summary	All Pupils	1,062	5%	6%	8%	7%
	Girls	463	5%	6%	8%	8%
	Boys	588	5%	6%	8%	7%
Prior Attainment	Higher ability	99	3%	4%	5%	3%
	Middle ability	282	4%	6%	2%	6%
	Lower ability	582	6%	8%	11%	13%
SEN	SEN School Action	146	5%	7%	11%	11%
	SEN School Action +	54	6%	10%	7%	18%
	SEN Statement	23	9%	8%	13%	13%
	Not SEN	828	5%	5%	7%	6%
Free School Meals	FSM (in last 6 yrs)	708	5%	8%	7%	14%
	Not FSM (in last 6 yrs)	343	6%	5%	10%	5%
Ethnicity	White	482	6%	6%	9%	8%
	Black Caribbean	125	6%	6%	14%	8%
	Black African	255	3%	4%	2%	3%
	Indian	8	2%	4%	0%	3%
	Bangladeshi	16	6%	5%	6%	4%
	Any Other	131	3%	5%	3%	6%
First Language	First Language not English	750	4%	5%	6%	5%
	First Language English	301	7%	6%	14%	8%

Year 7 Attendance



96.3%

Year 8 Attendance



94.0%

Year 9 Attendance



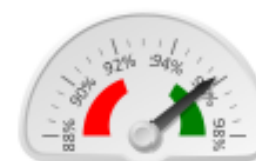
94.1%

Year 10 Attendance



94.4%

Year 11 Attendance

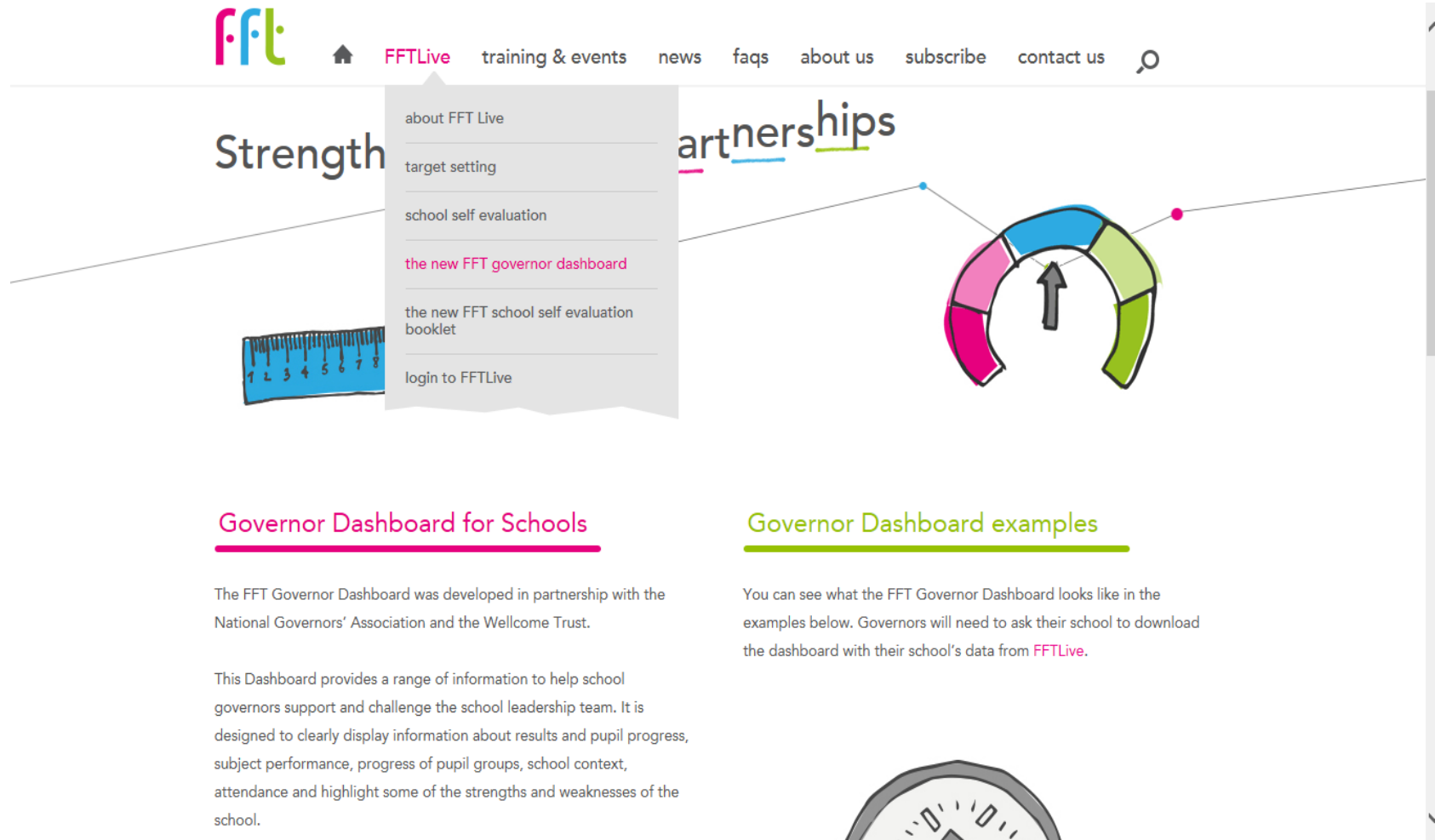


95.8%

How will the Dashboard help governors?

- Understanding the strengths and weaknesses of the school
- School improvement and development planning
- Preparing for OFSTED inspections
- Supporting Headteacher performance management
- Setting the strategic vision for the school.

FFT website - www.fft.org.uk



Governor Dashboard for Schools

The FFT Governor Dashboard was developed in partnership with the National Governors' Association and the Wellcome Trust.

This Dashboard provides a range of information to help school governors support and challenge the school leadership team. It is designed to clearly display information about results and pupil progress, subject performance, progress of pupil groups, school context, attendance and highlight some of the strengths and weaknesses of the school.

Governor Dashboard examples

You can see what the FFT Governor Dashboard looks like in the examples below. Governors will need to ask their school to download the dashboard with their school's data from [FFTLive](http://www.fft.org.uk).

Further support for governors

- Brief film introducing the FFT Governor Dashboard
- New online e-learning module for governors (free): introduction to FFT Governor Dashboard, with certificate on completion
- Knowing Your School Guide (www.fft.org.uk)
- Follow us on Twitter: @FFTEdu
- Email us: hello@fft.org.uk