

INDUCTION



WELCOME



Welcome to Manchester. Architecture is a discipline that is extensive, challenging, intriguing, exciting, and deeply rewarding. Our School aims to enable you to become the Architect you want to be. Take risks, ask questions and immerse yourself in the discipline to build knowledge and ability. Read as much as you can, talk to peers and colleagues, visit buildings and places that interest you. Be prepared to ask fundamental questions about how we define and build the space that makes our cities and landscapes. Remember that knowledge and understanding takes time, and importantly that Architecture is serious fun. We look forward to working with you.

Professor Tom Jefferies // Head of School



This is the most exciting time in a generation to study architecture and Manchester is about the most interesting place you could be - in the thick of it. Look around you in any direction in the city centre and you can see towering cranes on the move in the day or blinking at night. This is a city that is remaking itself, and not for the first time. The teachers you will work with are engaged in live projects and investigating new and alternative futures through their research. We teach architecture in a way that puts you at the centre of your education. Through interconnected Studio, Humanities and Technology teaching we ask you to discover what kind of creative Architect you want to be, to investigate the matters that you are concerned with and develop your expertise. We are looking forward to seeing what you do and become.

Dan Dubowitz // Programme Leader BA [Hons]



STUDIO



Emily Crompton // Year Leader

e.crompton@mmu.ac.uk

Welcome to Year 1. First Year at Manchester School of Architecture is all about finding out what you bring with you and how you can use your skills, culture and understanding to develop your own way of designing.

In Year 1, we are interested in how space is used by people. Your time will be spent making, drawing, thinking and recording in a number of taught sessions which will ask you to question the context of the space around you. The week in a life of an Architecture Student will see you taking part in STUDIO sessions all day on Monday with your tutor and small tutor group. On a Tuesday you will concentrate on your TECHNOLOGIES case studies starting with a morning lecture. On Wednesdays mornings you will develop your SKILLS following a lecture with me, here will be a series of workshops delivered by Graduate Teaching Assistants. Your focus on Thursdays is on HUMANITIES coursework starting with a morning lecture. Fridays are self-directed, working independently in the studio, the workshop and the city on your design work, portfolio, skills, essays, analysis and theoretical work.

You should carry a small sketchbook

with you at all times to sketch and diagram as you begin to notice the details, artefacts and inhabitants of our city. It is important to understand that you already have a vast resource of skills and understanding within yourselves, and that you understand the studio environment is one in which individual investigations and debate are as important as 'being taught'.

You will learn to use a variety of creative techniques over the year and to push the boundary of what you think constitutes architectural knowledge.

The starting point for the year will require you to consider how movement might be visualised and manifest spatially. Through the design of a space for dance, the idea of considering the specific spatial qualities will be introduced and you might want to start sketching some ideas over the summer.

Most importantly, you should never be afraid to take risks and to go beyond what you think is 'required'. Be prepared to work hard and to be challenged on your designs in studio sessions by working in ways which you might not understand at first. Do not be scared to think differently and to make a few mistakes along the way.

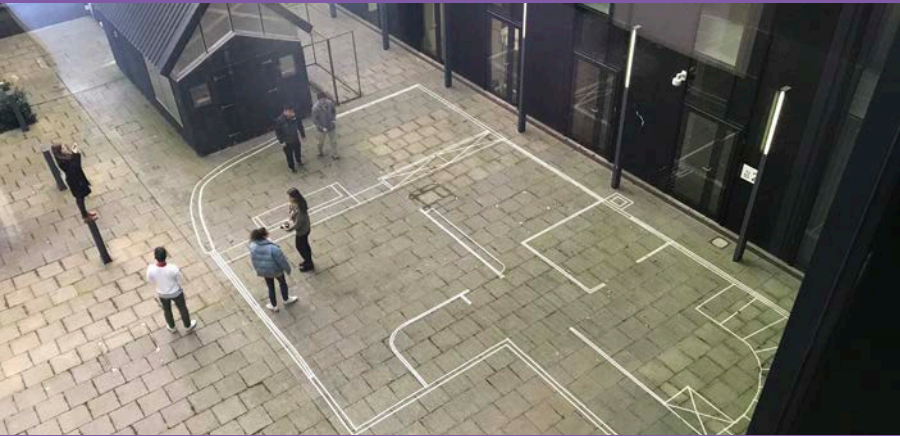


Just north of Piccadilly Gardens lies Manchester's Northern Quarter, which will be one of your sites for the year. You will use the area to work on a number of projects from small scale installations to gigantic futuristic visions. Over the year, you will learn to look and analyse this part of the city in a number of ways and to draw, photograph, film, model and analyse from a variety of different perspectives.

Get inspired over the summer by sketching old warehouse facades, exploring how you would fit a pop-up shop in a tiny plot on Tib Street, finding out when three buildings were built, looking up the plans for the Hive building, drawing a section through Matt & Phred's, researching the street art, making a model of the Manchester Craft Centre with a single sheet of paper, counting the architectural eras and discovering your favourite building material within this part of the city...

First Year Motto: Always remember that Architecture is a doing word!

HUMANITIES



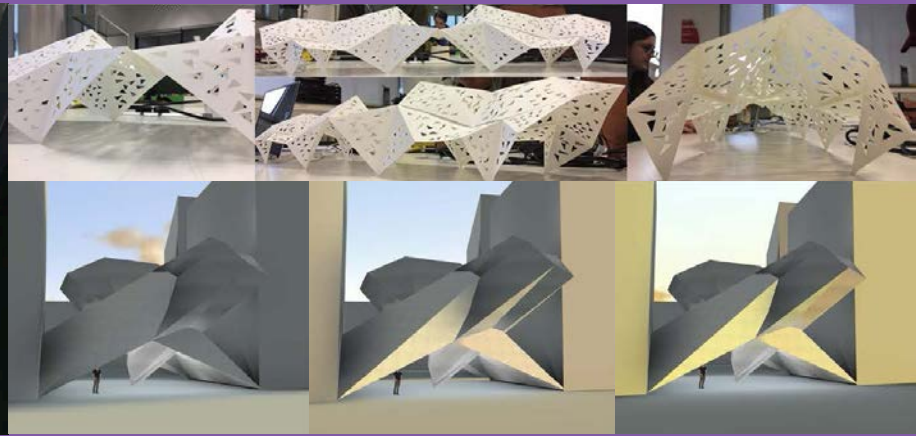
The Humanities unit accompanies your studio sessions throughout the year, and will introduce you to the historical, cultural and theoretical contexts of architecture. Although there is a focus on the Western tradition of architecture, lectures will contextualise the key 'Epochs' in a worldwide context. You will discuss key ideas and thoughts from antiquity to contemporary through the examination of history and evolution of concepts, ideas, cities and building types, to understand, how these have shaped our contemporary thinking. The course will be delivered through a lecture series, however coursework elements are designed to be a mixture of both academic writing and creative outputs such as modelmaking, which develops skills in research, analysis and visual representation.

Over the summer, get inspired by finding out more about your own city's history and key buildings. Start sketching interesting historical features on buildings you know, and copy other ones from pictures of famous examples from various periods of architectural history, such as Antique Capitals and Orders, Gothic Vaults, Renaissance Domes, Baroque Facades or the arrangement of Modernist Spaces.

Dr Luca Csepely-Knorr
Humanities



TECHNOLOGIES



"You can't better the world by simply talking to it. Philosophy, to be effective, must be mechanically applied." Buckminster Fuller.

"Technology is the answer; but what was the question?" Cedric Price.

The Technologies unit asks you to question the experiential and instrumental performance of a building by examining materiality, buildability, technology, sustainability and detail. Through a series of lectures and case studies the course allows you to analyse architecture starting with the following time honoured criteria set by Vitruvius of 'Fermitas, Utilitas, Venustas' [Firmness, Commodity and Delight] :

Firmness // Is the building safe, stable and durable?

Commodity // Does it accommodate its programme comfortably?

Delight // Is the experience of the building delightful?

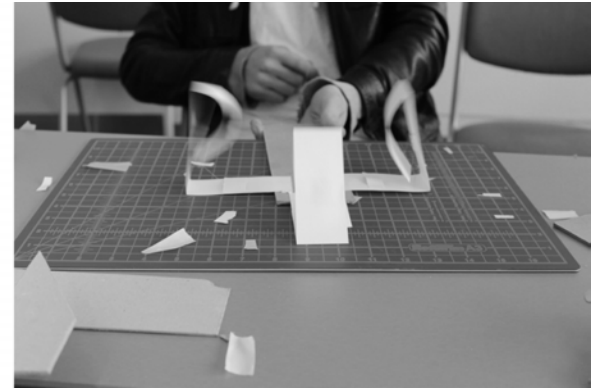
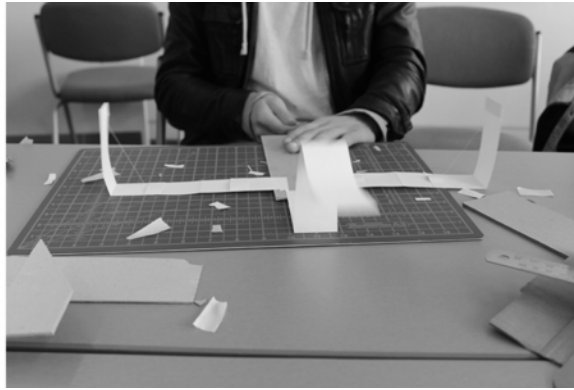
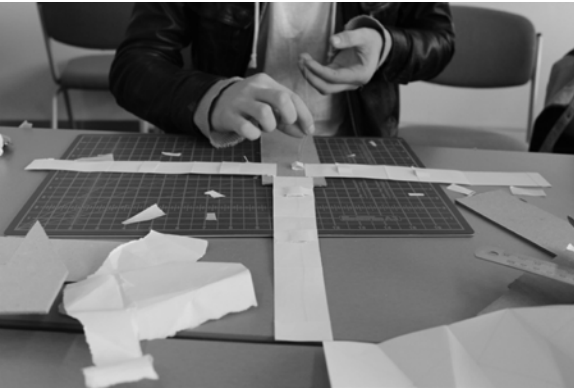
Get inspired over the summer by drawing a portal frame, finding out the compressive strength of a standard brick, making a simple model of a frame, designing a tall tower to support a tennis ball with one sheet of paper, finding three types of bridge, drawing a staircase in section and finding a structural fault in a building.

Matt Ault
Technologies



SKILLS

EVENTS

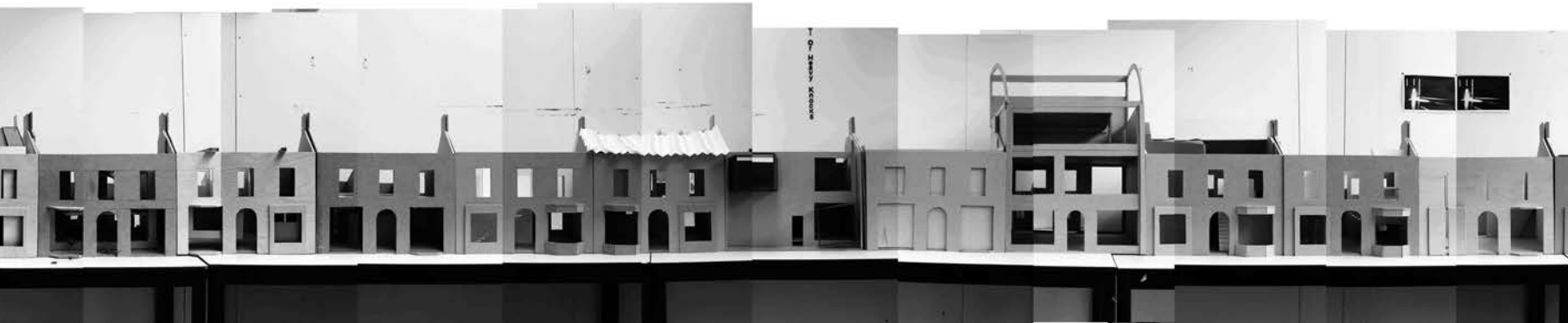


Each week is supplemented by a STUDIO SKILLS workshop session delivered by Graduate Teaching Assistants who are studying on the MArch programme at Manchester School of Architecture. These sessions are designed to allow you to progress the many skills required to meet the course deadlines and align with Studio, Humanities and Technologies outputs which require rudimentary knowledge and skills that underpin the discipline.

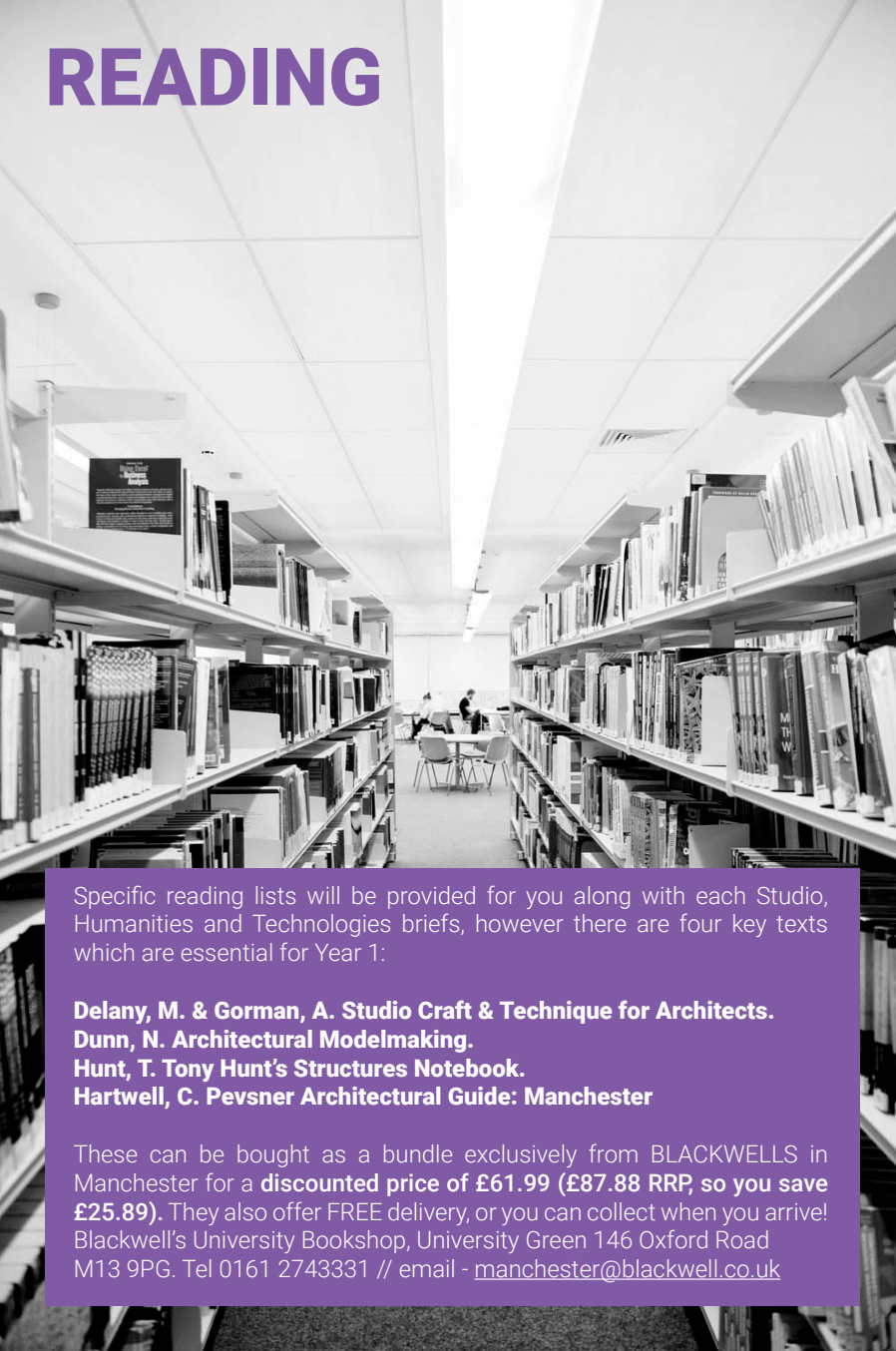
Get inspired over the summer by simply looking at drawings that inspire you and working out how you think they were drawn by experimenting with techniques and recording them in an experimental sketchbook. Some of our favourites can be found at [<http://drawingarchitecture.tumblr.com>].

After Easter each year students work with key collaborators in the city in an intensive EVENTS programme which tackle live agendas through exhibitions, installations, built projects, workshops, charrettes, processions and protests. Over the years this programme has seen students working with real clients doing anything from bricklaying to creating digital environments.

Get inspired over the summer by reading through the blog of Events 2019 which can be found at [<http://events.msa.ac.uk/2019/>]. You can also get involved in architectural events where you live from exhibitions to volunteering for community building projects.



READING



Specific reading lists will be provided for you along with each Studio, Humanities and Technologies briefs, however there are four key texts which are essential for Year 1:

Delany, M. & Gorman, A. Studio Craft & Technique for Architects.
Dunn, N. Architectural Modelmaking.
Hunt, T. Tony Hunt's Structures Notebook.
Hartwell, C. Pevsner Architectural Guide: Manchester

These can be bought as a bundle exclusively from BLACKWELLS in Manchester for a **discounted price of £61.99 (£87.88 RRP, so you save £25.89)**. They also offer FREE delivery, or you can collect when you arrive! Blackwell's University Bookshop, University Green 146 Oxford Road M13 9PG. Tel 0161 2743331 // email - manchester@blackwell.co.uk

EQUIPMENT

Architectural education combines drawing, model making, test modelling, photography, film making, sketching, experimentation, computer presentations, analysis and written work which all requires a lot of equipment. Although we do not suggest you buy overly expensive materials and experiment with found objects and recycled basics, there are some things which are worth investing in as follows:

ESSENTIALS FROM DAY 1:

Sketchbook // A3 // A4 // A5
Mechanical Pencil // 0.35mm // 0.50mm
Pencil Leads
3 x Drawing Pens // 0.25mm // 0.35mm // 0.7mm
Metric Scale Rule (300mm) // 1:1 // 1:5 // 1:20 // 1:50 // 1:100 // 1:200
Portable Drawing Board (A2/ A3)
Tracing Paper
Tape Measure

GOOD TO HAVE / FUTURE PURCHASES:

Ink // Various Colours
Adjustable Set Square // 300mm
Sketching Pencils
Notebook // Files
Roll of Tracing Paper
Cartridge Paper
Drawing Tube // A1
Model Making Grey Card
Scrap Card
Model Making Glue
Cutting Mat // A2
Steel Rule // 1000mm // 300mm
Scalpel // Blades
Suitable Waterproof Clothing
Calculator
Computer // Laptop Preferable // PC or MAC
External Hardrive // Backup
Digital Camera // Camera Phone
Map + Guide // Manchester
Map + Guide // Berlin & Dessau



STUDY TRIP

photo: Maira Tini // shortlisted for the 2017 Year 1 study trip photo competition prize

At the start of November we will be going on an architectural study trip to Berlin*, where we will be exploring the city and practicing our sketching and diagramming techniques. It will also include a trip to Dessau for your Humanities research project into the Bauhaus School and Masters Houses. If you wish to travel to Berlin you should arrange to travel to arrive by Sunday 3rd November. Building tours in Dessau will take place on Monday and Tuesday and you can return from the Friday, 8th November. Further details of the itinerary and project brief will

be handed out during lectures. Students must arrange their own travel and accommodation. We recommend that you book the return flights to Berlin NOW so that you can take advantage of cheap fares! It is extremely unlikely that you will end up travelling alone as we all tend to end up on the same flights. The closer we get to the dates the more expensive the flights will be! We suggest that you stay with groups of your choosing so it might be sensible to book your accommodation once you arrive in Manchester and find

out which studio groups you have been placed in. Overseas students who require additional visas to travel to other countries other than the UK should begin preparation as soon as possible, please ask for guidance if needed. You will need an appointment to apply for a visa, and will be required to provide a letter from University. Your application will take at least 14 working days to process applications. All UK students must ensure that you have at least 6 months on your passport.

International Students, please see the German Embassy website for information regarding visas:

<https://uk.diplo.de/uk-en/02/visa>

German visas are issued by a company called Visa Metric. You can contact them with queries:

Tel: +44 (0)3455212600

www.visametric.com/uk/germany/en

*Please note if you are unable to travel to Germany (due to visa restrictions or financial constraints), you will visit the city of London instead, where there will be equivalent tours.

MCR MAP

1 : MMU LIBRARY

Library // Books // Journals
Magazines // Maps // Special Collections
Computers // Archives

2 : MMU UNION

Student Union Advice Centre
Union Shop // Art Supplies // Paper
Pens // Paints // Modelmaking Card

3 : BENZIE + CHATHAM BUILDING

Studio // Workshops // A4 + More Shop
Computes // AV Store // Digital Lab
Printers // Scanners
Art Cafe // Roof Terrace

4 : HUMANITIES BRIDGFORD STREET

Lectures // Humanities // Technologies
Dissertation Library // B.15 Workshop

5 : UOM LIBRARY

Books // Journals // Research
Maps // Archives // Periodicals

6 : UOM UNION

Student Committee // Freshers Fair
Debate // Support // Community





Coming to Architecture School can be a daunting prospect, but you will automatically be part of the largest student society in the country and we are here to support you throughout your time at the MSA. The committee of the Manchester Student Society of Architecture [MSSA] is based in the corridor of the 6th floor, from where you can ask any questions you may have. We organise a series of events and activities, including the

informal Before You're 30 [BY30] lectures, the MSA Debating Union, the MSSA Zine, WOH (without a home), SOS (Sketch on Site), the MSA Ball, socials, and networking opportunities. You can become as active and involved a member as you like. Join the committee or the BY30 team or set up something new, like a sports team, an event, or another student led initiative. Just come along to one of weekly meetings on

the 8th floor and we will help you to get started. We look forward to meeting you in September, in the meantime check our website, like us on Facebook and follow us on Twitter! And make sure you join the Official MSA Year 1 Facebook Group, some of our members will be there to help orientate you!

The MSSA

Find out more at:

facebook: MSAPreshers19.20Official

mssa.msa.ac.uk

facebook.com/themssa

twitter.com/themssa

facebook.com/beforeyourethirty

twitter.com/beforeyoure30

facebook.com/MSADebate

SUPPORT

Manchester School of Architecture is dedicated to provide a high level of support to all our students and this is facilitated by trained support staff at both Manchester University and the Manchester Metropolitan University. Support Staff can advise students on a range of issues relating to university life including: managing your time, presentation skills, reflective journals, research, exam tips, essay writing, dealing with stress, getting the best from your course, finding your way around the campus and the city, jobs and careers, accommodation and can also signpost students to other relevant sources of information and advice around the university. Support Staff will be running timetabled sessions on research for architecture students as well as dedicated writing classes. Workshop sessions on study skills will also be available to all students across the faculty and can be found at the following link [<http://artdes.mmu.ac.uk/studentsupport>] and via email notifications throughout the year. Support Staff are available to meet with students by appointment on a one-to-one basis, in confidence. Please feel free to contact Student Support Officer by email or by telephone (details below). If you are disabled or have a Specific Learning Difficulty, such as dyslexia, or health condition such as mental health difficulties and might need support with your studies you should seek advice from MMU Disability Support Team [based in the hub in the Business

School // 0161 247 3491] as soon as possible. The Disability Support Team provides a comprehensive advisory, assessment and support service to students with disabilities. If you would like an initial confidential discussion with an adviser please contact the above telephone number to arrange an appointment. You may find that you need some extra help when faced with the demands of Higher Education, using medical evidence and an initial assessment, a Learning Support Adviser can help to identify your needs and suggest strategies, which will prove helpful. The adviser will produce a Personal Learning Plan [PLP] with you, which identifies to teaching staff your support needs and advises them of any reasonable adjustments they may need to make. The PLP is then sent to your department with your permission and will be incorporated into your sessions.

University of Manchester

Student Services, Burlington St

Tel: 0161 275 5000

Email: ssc@manchester.ac.uk

Manchester Metropolitan University

Student Hub, Geoffrey Manton

Tel: 0161 247 1000

Email: studenthub@mmu.ac.uk

MMU Study Skills / Student Support

Tel: 0161 247 1191

Email: SSOA@mmu.ac.uk



MANCHESTER SCHOOL OF ARCHITECTURE



Cover photo: Paul Grogan Photography