

Student iPad Certificate Re-install Procedure

Created by Faculty of Medical & Human Sciences IS Department

Author: Ali Rathore

19th November 2012

Student iPad Certificate Re-install Procedure

Introduction

These instructions have been prepared, for situations when the University Certificates (or Profiles) configured on the iPad have expired, which then requires the manual installation of new Certificates onto the iPads.

IMPORTANT: These instructions must **only** be performed when advised to do so, by Faculty IT.

The process is in 3 quick stages, as follows:

- A) The correct naming of the iPad.
- B) Removal of old profiles.
- C) Installation of new profiles.

Pre-Requisites

- **Wireless Internet connection on the iPad**

Your iPad must have an active wireless internet connection.

NOTE : The screenshots in this document have been taken on an iOS5 ipad. For, those who have updated to iOS6, layout of the options should be the virtually identical or very similar.

Student iPad Certificate Re-install Procedure

Created by Faculty of Medical & Human Sciences IS Department

Author: Ali Rathore

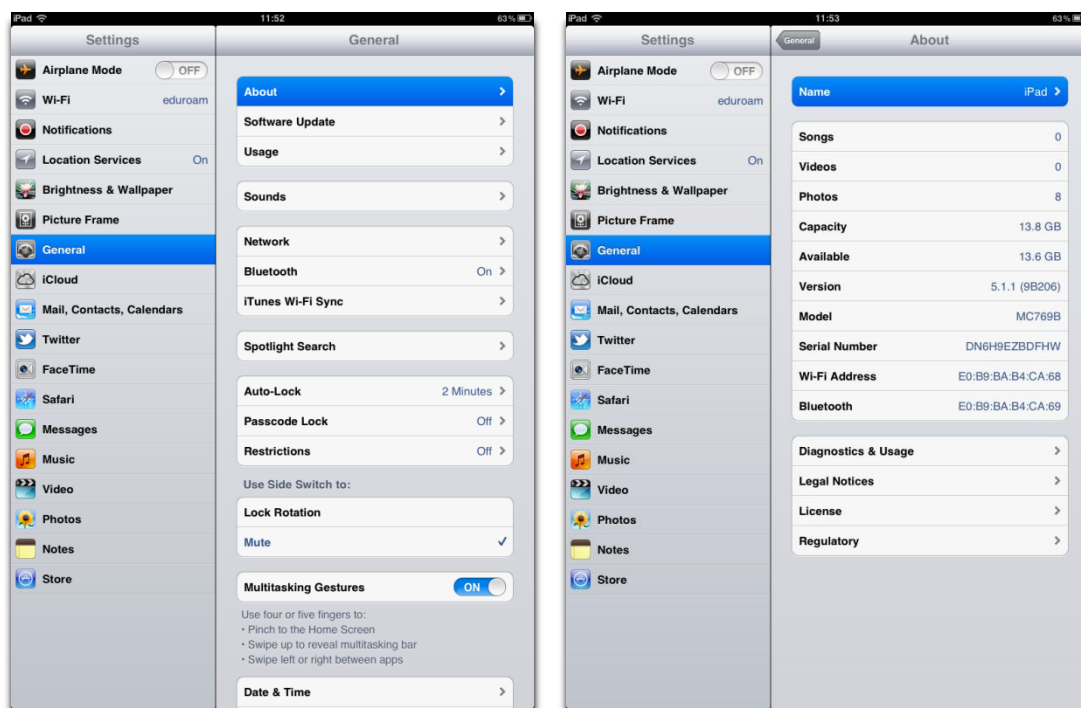
19th November 2012

A) iPad Renaming

- 1) Select the **Settings** icon on the main screen to be taken to **General** settings screen.



- 2) Select the **About** option and then select the **Name** option.



Student iPad Certificate Re-install Procedure

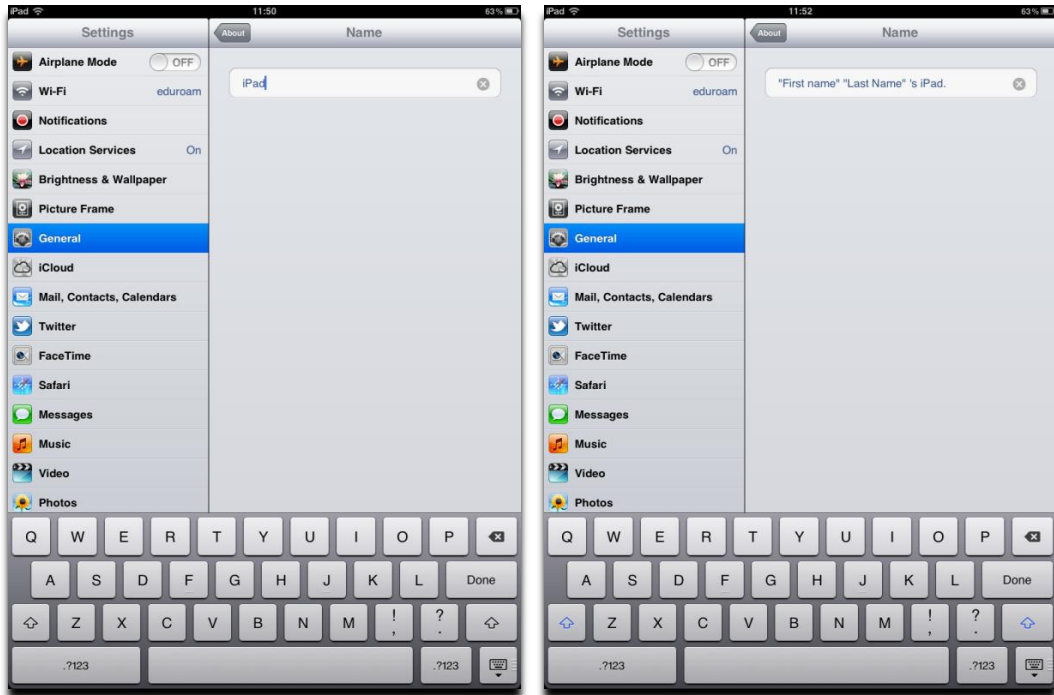
Created by Faculty of Medical & Human Sciences IS Department

Author: Ali Rathore

19th November 2012

- 3) Check to see your iPad is named with your **full name**. If not, delete the current name by selecting the **X** option and re-name the iPad with your full name, for example Steven Paul Job 's iPad.

IMPORTANT: The iPad must be named this way so we can identify it on our system.



- 4) Select **Done** on the keypad to set the name.



Student iPad Certificate Re-install Procedure

Created by Faculty of Medical & Human Sciences IS Department

Author: Ali Rathore

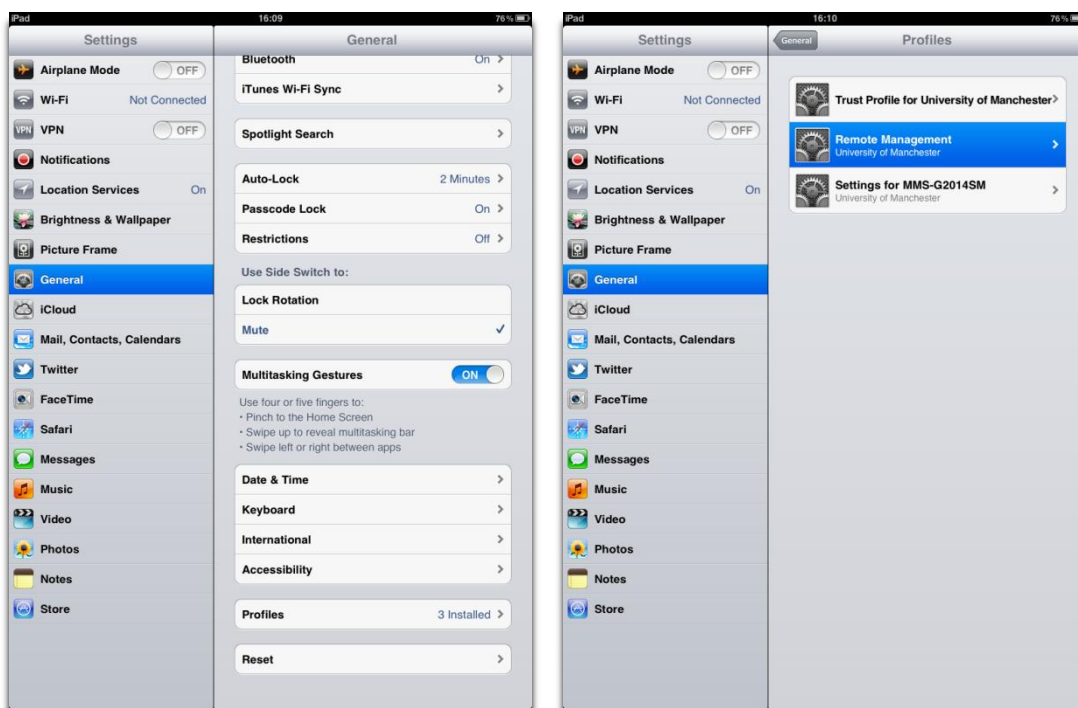
19th November 2012

B) Old Profiles deletion

- 5) Select the **Settings** icon on the main screen to be taken to **General** settings screen.



- 6) Select the **Profiles** option where you will see 3 listed.



Student iPad Certificate Re-install Procedure

Created by Faculty of Medical & Human Sciences IS Department

Author: Ali Rathore

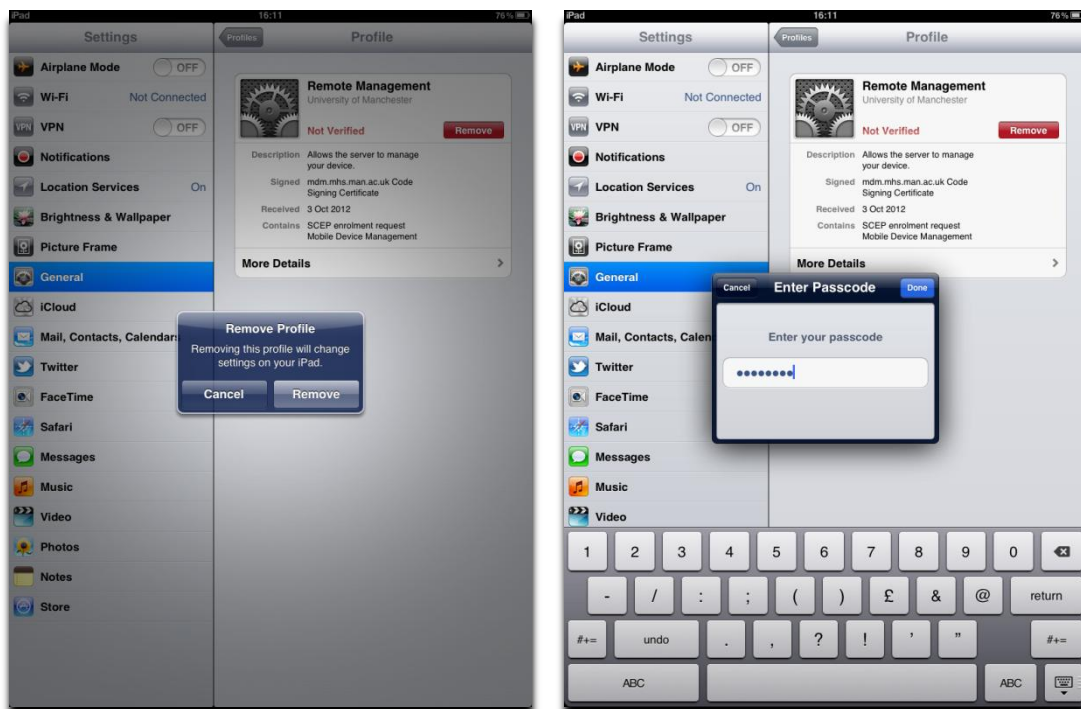
19th November 2012

- 7) Tap on the Remote Management Profile and select **Remove**.



- 8) Select **Remove** on the pop-up box and enter your **passcode** when prompted. Select **Done** to proceed.

The Remote Management profile will then be removed **along with your Sector profile** automatically, leaving just the Trust Profile.



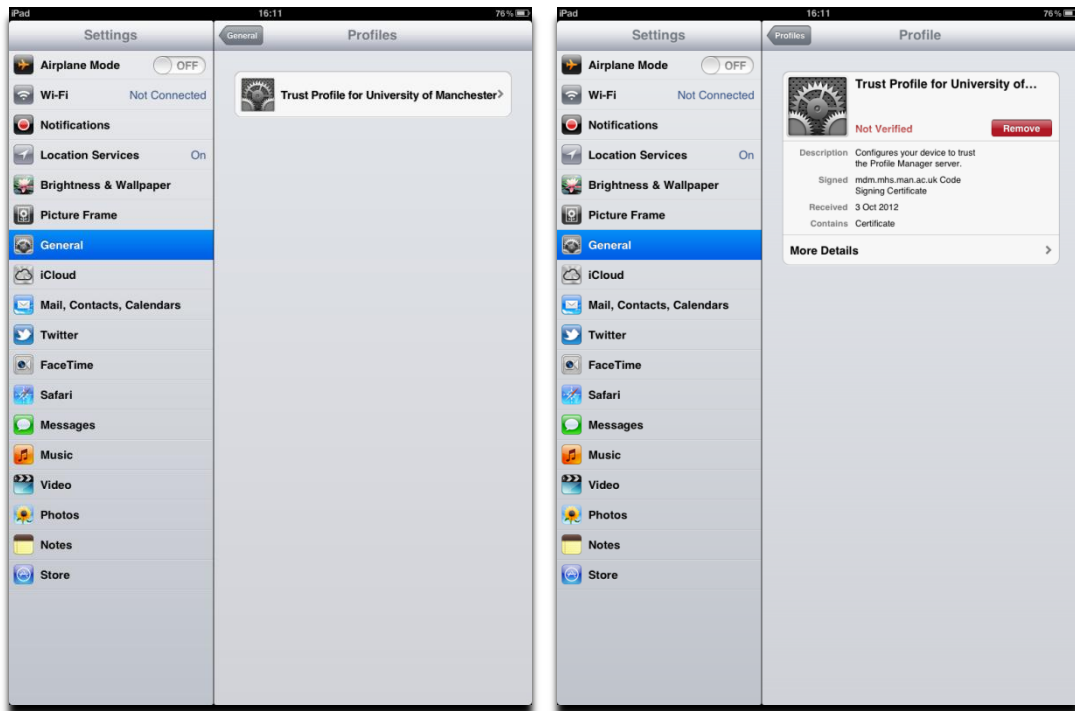
Student iPad Certificate Re-install Procedure

Created by Faculty of Medical & Human Sciences IS Department

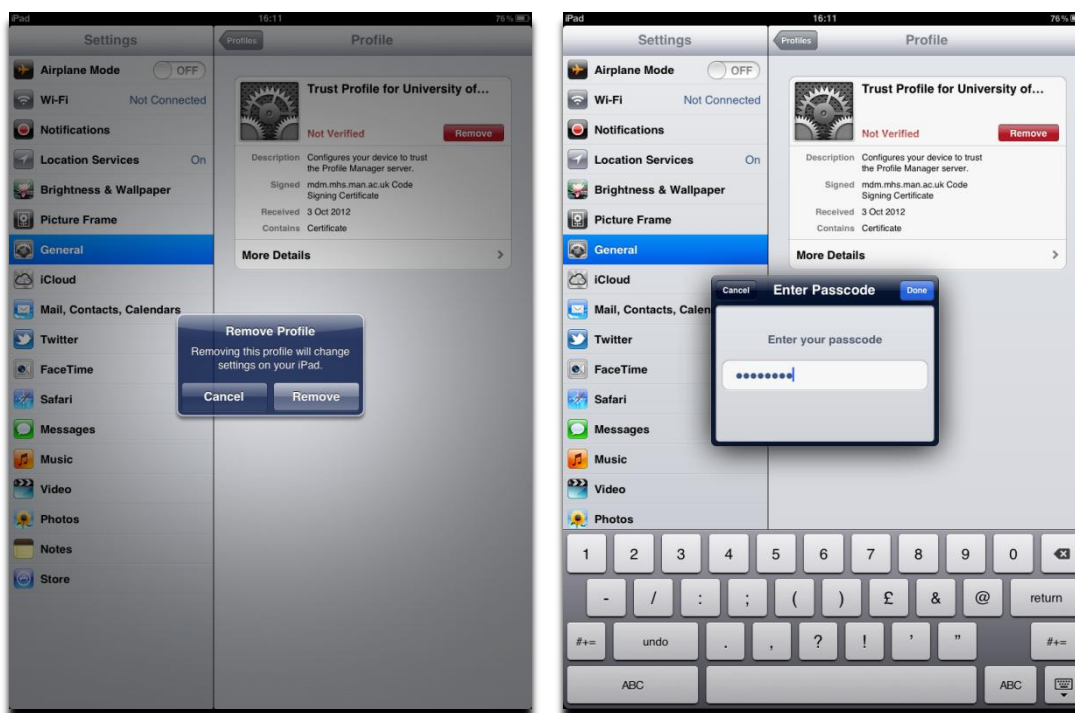
Author: Ali Rathore

19th November 2012

- 9) Repeat the process to remove the Trust Profile for University of Manchester. I.e. Tap on the Trust Profile for University of Manchester Profile and select **Remove**.



- 10) Select **Remove** on the pop-up box and enter your **passcode** when requested. Select **Done** to proceed. The profile will then be removed.



Student iPad Certificate Re-install Procedure

Created by Faculty of Medical & Human Sciences IS Department

Author: Ali Rathore

19th November 2012

B. iPad Re-configuration

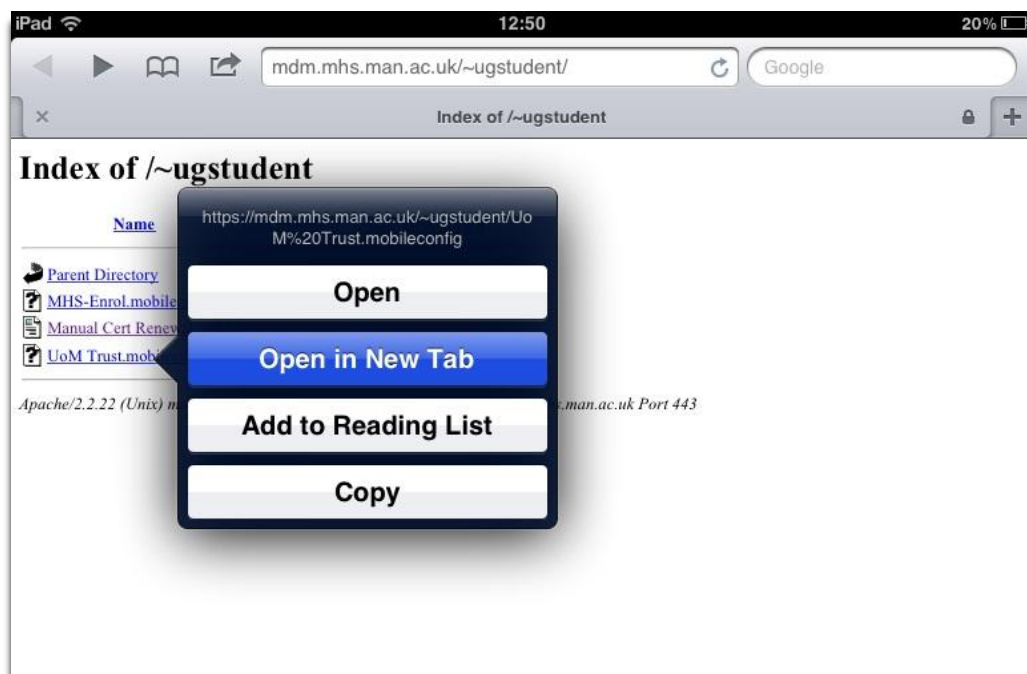
The following 2 files **must** be installed on the iPad, and in the **following order**:

- i) UoM Trust Profile.mobileconfig
- ii) MHS_Enrol.mobileconfig file.

IMPORTANT: Ensure you have an active wireless internet connection on your iPad.

- 11) Open up the Safari web browser on your iPad that's pointing to the following URL:
<https://mdm.mhs.man.ac.uk/~ugstudent/>.

Hold down on the **UoM Trust.mobileconfig** link (for a second) to view the menu and select the **Open in New Tab** option.



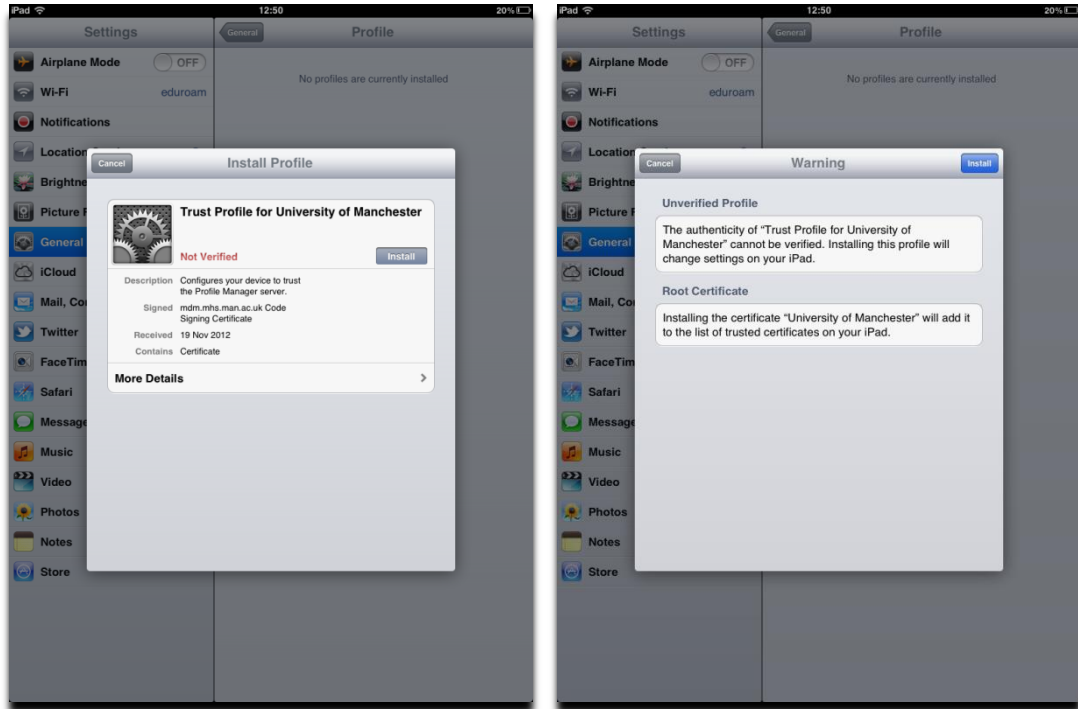
Student iPad Certificate Re-install Procedure

Created by Faculty of Medical & Human Sciences IS Department

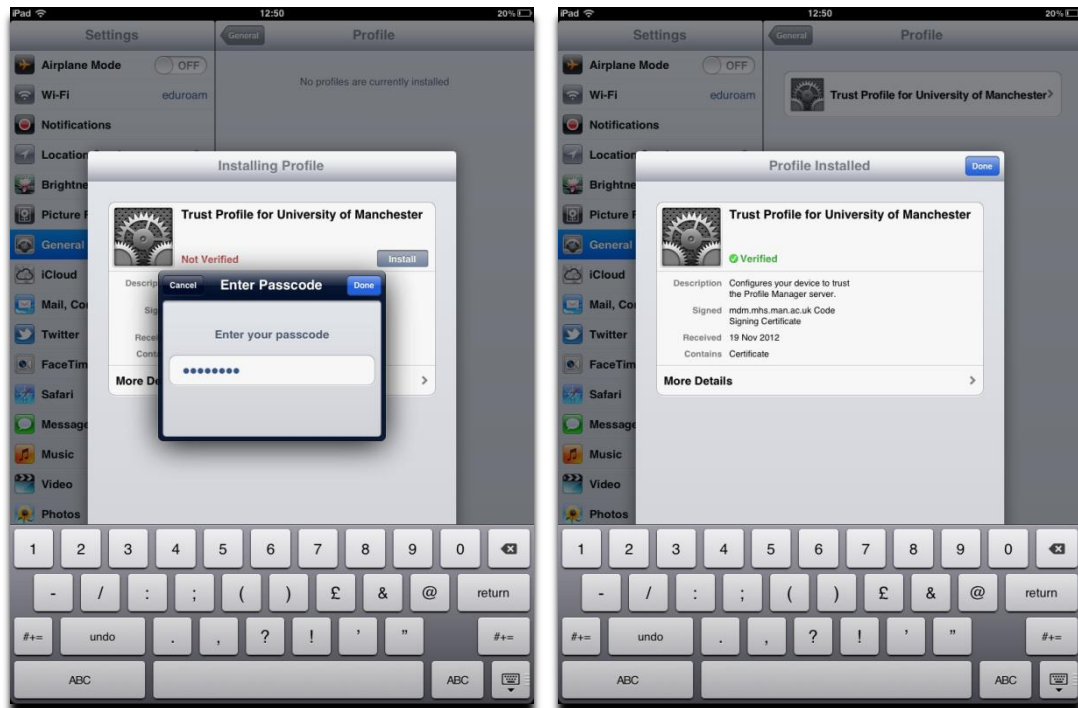
Author: Ali Rathore

19th November 2012

12) Select **Install** on the Install Profile screen and **Install** again on the Warning screen.



13) Enter your **passcode** when prompted to do so and Select **Done**. Select **Done** again. The Trust profile will now be installed.



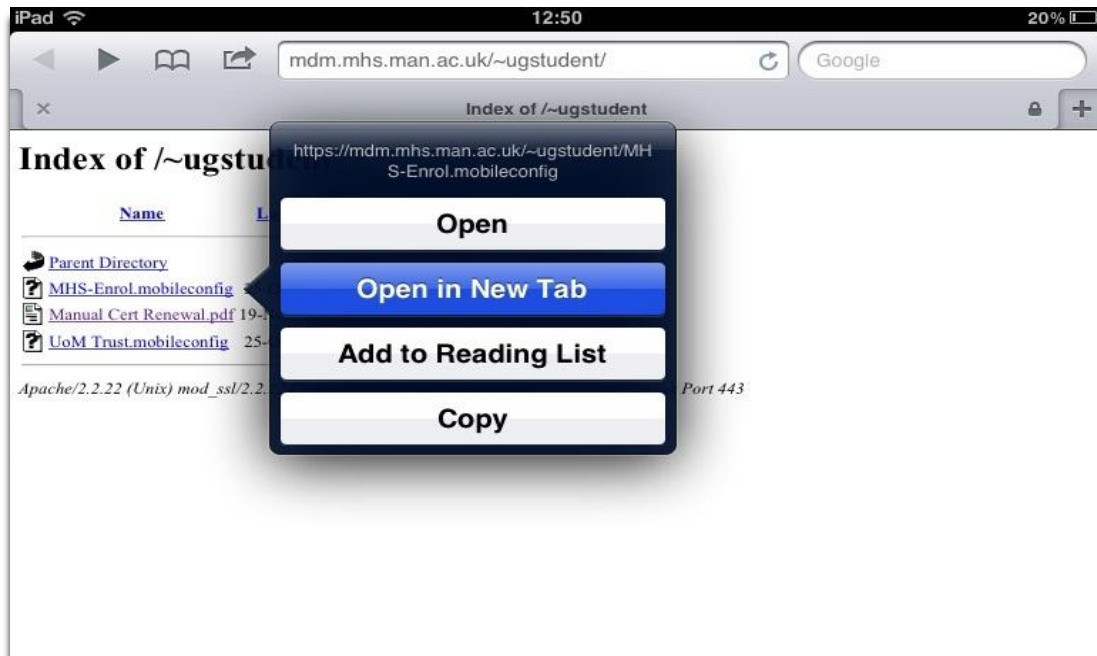
Student iPad Certificate Re-install Procedure

Created by Faculty of Medical & Human Sciences IS Department

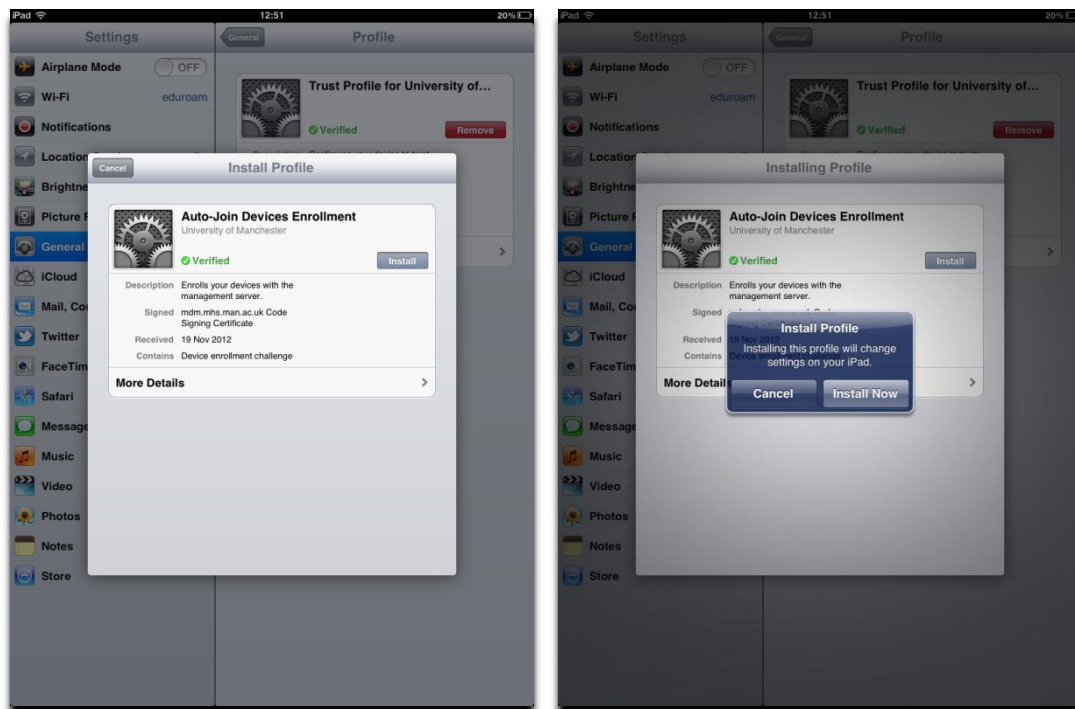
Author: Ali Rathore

19th November 2012

- 14) Repeat the process to install the **MHS_Enrol.mobileconfig** profile. Hold down on MHS-Enrol.mobileconfig (for a second) to view the menu and select the **Open in New Tab** option.



- 15) Select the **Install** option. Then select **Install Now** when prompted.



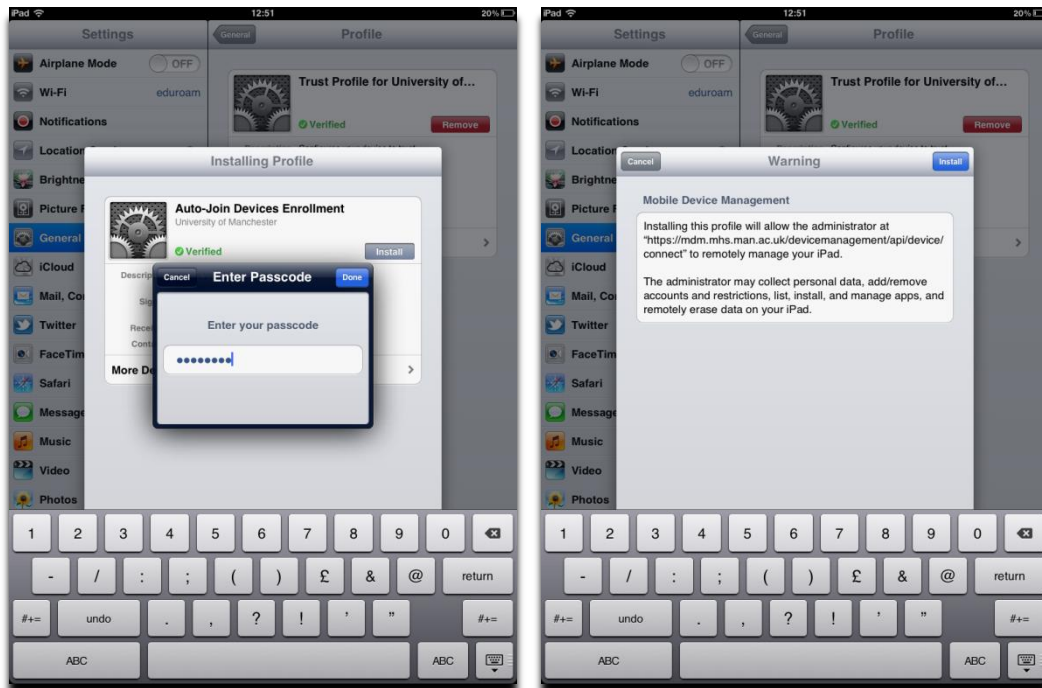
Student iPad Certificate Re-install Procedure

Created by Faculty of Medical & Human Sciences IS Department

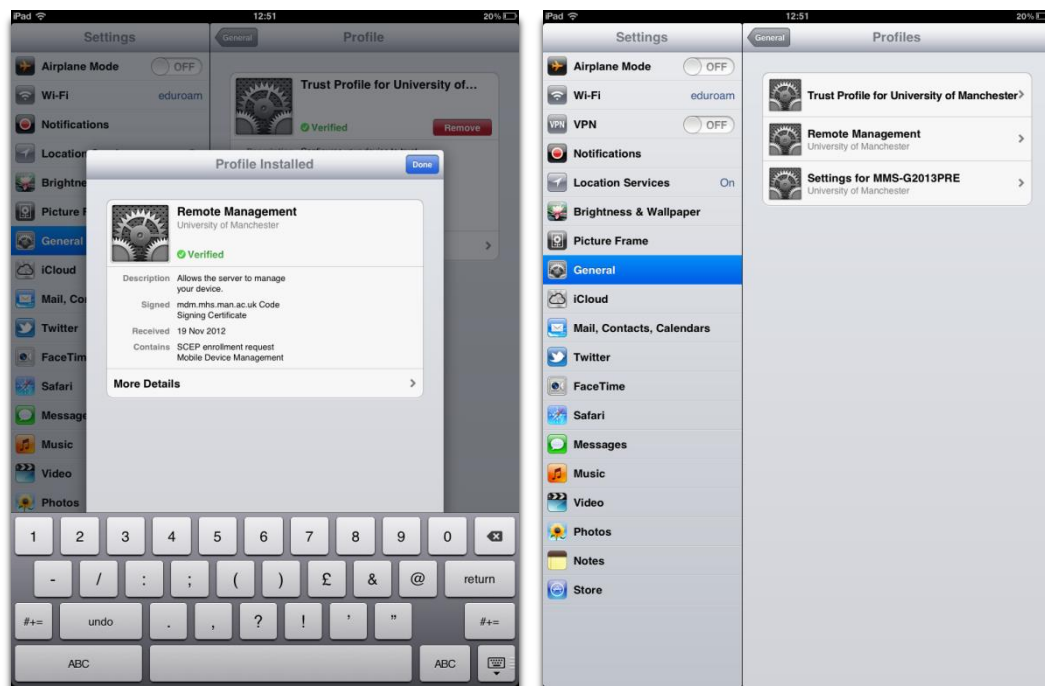
Author: Ali Rathore

19th November 2012

- 16) Enter your **passcode** when prompted to do so and select **Done**. Select the **Install** option on the Warning screen.



- 17) Select **Done** again. The profile will now be installed. A third profile (for your sector) will be installed automatically.



Your device has now been successfully re-configured and is now manageable again.