



MANCHESTER
1824

The University of Manchester

GENDER, SEXUALITY AND CULTURE

POSTGRADUATE BROCHURE 2013

SCHOOL OF ARTS, LANGUAGES AND CULTURES



THE FACTS

- The UK's first dedicated research facility focusing exclusively on the relationships between sexuality, culture and history
- Pioneering teaching informed by the latest research
- Multidisciplinary links and resources across the University
- Annual 'Sexuality Summer School' with diverse speakers
- £650 million investment in university facilities for research and study
- 4 million books in one of the UK's best-resourced university libraries
- Nationally acclaimed University Careers Service with postgraduate support
- Exciting and diverse environment in one of the best student cities in the world



CONTENTS

OUR UNIVERSITY	2
GENDER, SEXUALITY AND CULTURE AT MANCHESTER	4
TAUGHT COURSES	8
SCHOOL CONTACT DETAILS	9
SCHOOL OF ARTS, LANGUAGES AND CULTURES	10
FIND OUT MORE ONLINE	12

"The University of Manchester provides an enjoyable, dynamic and exciting working environment, full of enthusiastic people, and with a positive attitude towards research and postgraduate study."

Annette Allen,
postgraduate student 2012



OUR UNIVERSITY

Making things happen

At Manchester, we are proud of both our academic excellence and a pervasive 'can-do' attitude of staff and students that turns enthusiasm into achievement and ground-breaking theory into cutting-edge practice. With research that is internationally renowned across a huge range of disciplines, we work with partners across the world to effect real change in commerce and society.



Our University has leapt 38 places in the influential Academic Ranking of World Universities (ARWU) survey in the past seven years, from 78th to 40th in the world, and sixth in Europe, confirming us as a progressive and world-class teaching and research centre. We are also ranked third in the UK for 'research power', and research in more academic areas than any other UK university.

Learn more about us:

www.manchester.ac.uk/aboutus

Unrivalled investment

We've recently invested £650 million in facilities and resources for our academic community – with more still to come. Our newest development is the Alan Gilbert Learning Commons, in which we invested £24 million to create a multitude of innovative, technology-rich facilities dedicated to student-led learning across all disciplines.

Find out more:

www.manchester.ac.uk/library/learningcommons

Multidisciplinary collaboration

As the biggest university in the UK, we are proud of the advantages our size brings: a fantastic breadth and depth of knowledge, the cross-pollination of skills and disciplines, and the buzz of a large, diverse academic community. We habitually collaborate and share knowledge, expertise and resources, both across the University and with our numerous external partners in industry, business, the arts and the public and not-for-profit sectors.

This is particularly valuable for our postgraduates, whose specialist areas of study at the cutting edge of research often transcend traditional discipline boundaries, and who benefit considerably from our connections with external partners across the globe.

Find out more:

www.manchester.ac.uk/research

Fuelling ambition

At Manchester, you will study programmes packed with the latest research findings, meet leading global experts from academia and industry, use cutting-edge equipment in modern facilities, and polish skills that postgraduate employers from all fields want.

Whether you're a committed researcher wanting to further the human quest for knowledge, a career-focused professional seeking a specialist qualification, or a burning enthusiast for higher learning and understanding, a postgraduate degree at The University of Manchester will help you to realise your ambitions.

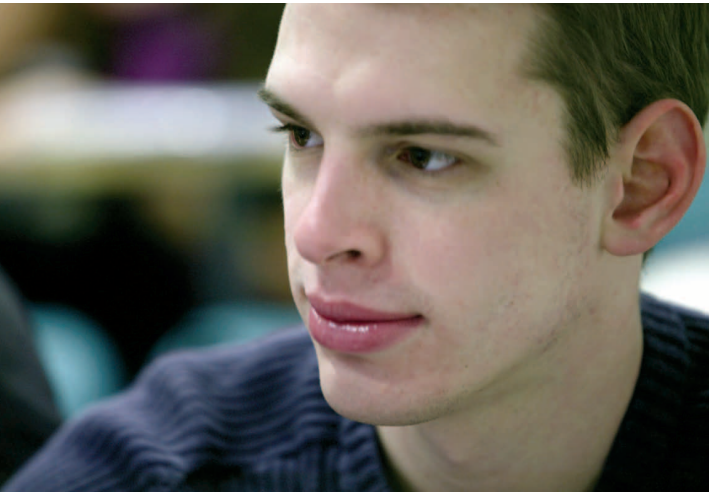
Find out more

Access online or order a copy of our 2013 prospectus:
www.manchester.ac.uk/pg/prospectus



GENDER, SEXUALITY AND CULTURE AT MANCHESTER

The interdisciplinary and cross-disciplinary research Centre for the Study of Sexuality and Culture (CSSC) was launched at The University of Manchester in 2003: the UK's first research facility to focus exclusively on the relationships between gender, sexuality, culture and history.



An early objective of the Centre – with an affiliated faculty drawn from numerous academic disciplines across the University – was to rethink the study of sexuality itself, and to explore new paradigms and theoretical approaches.

With the establishment of an innovative MA degree course, and the sponsorship of frequent lecture series, seminars and conferences, the Centre aims to foster pioneering scholarship that challenges current understandings of sexuality and gender by interrogating cultural identities, cultural production and cultural theory in relation to other power systems, such as race, ethnicity and class.

Find out more online...

<http://www.alc.manchester.ac.uk/subjects/englishamericanstudies/postgraduatetaught/research/course/?code=01167>

Sexuality Summer School

The Sexuality Summer School is an annual event at The University of Manchester intended for postgraduates working in the area of sexuality. The Summer School addresses current debates within queer studies, emphasising in particular its implication for the interdisciplinary study of culture. It offers you an opportunity to discuss queer debates with researchers in the CSSC, as well as with international scholars brought in for the event.

Doctoral and masters-level students from any university are encouraged to apply, as well as third-year undergraduates interested in taking the MA in Gender, Sexuality and Culture at Manchester.

Past and forthcoming speakers at the CSSC and the Sexuality Summer School include: Lauren Berlant, Rosi Braidotti, Judith Butler, George Chauncey, Douglas

Crimp, Lisa Duggan, Elizabeth Grosz, David Halperin, Richard Dyer, B Ruby Rich, Joanne Meyerowitz, Annamarie Jagose and David Eng.

GENDER, SEXUALITY AND CULTURE AT MANCHESTER

The Morgan Centre for the Study of Relationships and Personal Life

Founded in 2005 and based in Sociology in the School of Social Sciences, this Centre works to foster interdisciplinary and collaborative research projects in the field of relationships, family and personal life, including issues on gender and sexuality.

Dr Brian Heap in Sociology is a core member of the Morgan Centre and has worked extensively on theories of social and cultural change, with particular emphasis on the implications of social change for sexualities, gender, families and intimacies and ageing, as well as the social aspects of AIDS.

Find out more online...

For more information on the Morgan Centre, visit:
www.manchester.ac.uk/socialsciences/morgancentre/index.html
or <http://bit.ly/qcP8ef>

Further institutional links

Other centres at The University of Manchester that coordinate with the CSSC, the Summer School and the MA in Gender, Sexuality and Culture include:

- Centre for Interdisciplinary Research in the Arts and Languages (CIDRAL)
- Feminist Theory Network
- Cultural Theory Institute



TAUGHT COURSES

MA in Gender, Sexuality and Culture

The MA in Gender, Sexuality and Culture is an innovative and highly interdisciplinary degree course designed specifically for students interested in investigating gender and sexuality within culture.

Key staff involved in your course are: Dr David Alderson, Professor Laura Doan, Dr Monica Pearl, and Professor Jackie Stacey.

Course aims

- Introduce new approaches to gender studies and sexuality studies as a theoretical, social, cultural, political and historical field of investigation
- Challenge current understandings of gender and sexuality by interrogating cultural identities, such as queer, heterosexual, homosexual, gay, straight, bisexual and transgendered
- Examine cultural production and cultural theory in relation to other power systems, such as race, ethnicity, nation, place, generation and class
- Offer training in research methods

Students from all academic backgrounds are invited to apply.

Entry requirements

Entry is normally with an Upper Second class Honours degree, or its equivalent, in a relevant academic subject, or comparable professional qualifications. Students from North American institutions normally have a 3.0 GPA (we do not require the GRE).

Suitably qualified students will have the opportunity to progress to PhD study.

What does the course offer you?

Unique, multidisciplinary approach

Our approach is unique within the UK, since we bring together scholars who offer options in a range of academic disciplines, including English and American studies, art history and visual cultures, politics, history, modern languages, religions and theology, history of medicine, sociology, social anthropology, and others.

Reputable research environment

The research culture of The University of Manchester is unusually rich for the study of gender and sexuality; most of the departments associated with the MA in Gender, Sexuality and Culture were ranked extremely high in the 2008 Research Assessment Exercise (RAE).

The Department of English, American Studies and Creative Writing (EAC), in which the MA is based, was ranked second in the country, while the University overall was ranked among the top ten universities in the UK, and third in the country in terms of “research power”.

Based in the Centre for the Study of Sexuality and Culture, you can take advantage of the stimulating research environment, with regular seminar series such as ‘Queer Methodologies’, and conferences.

Diverse choice of topics

In close consultation with the course directors, you will opt for a range of MA units drawn from offerings in several Schools within the Faculty of Humanities. This approach allows you greater flexibility and the opportunity to pursue research in new areas.



Course structure

The MA comprises:

- One core course unit called Gender, Sexuality, and Culture
- Several course unit options, designed independently in consultation with the course director (see below)
- Research training
- Dissertation (up to 15,000 words)

Interdisciplinary course units

An expanding number of course units across the University are included in the MA. Among the units normally available are:

From the School of Arts, Languages and Cultures:

- Gender, Sexuality and Culture (Professor Laura Doan)
- The American Body: Race and Sexuality in the 20th Century (Dr Monica Pearl)
- Queer Cinema and Beyond (Professor Jackie Stacey)
- Post-Gay Culture (Dr David Alderson)
- Race, Gender and Power (Dr David Brown)
- Contemporary Fiction (Dr Kaye Mitchell)
- The Archaeology of Gender (Dr Eleanor Casella)
- Issues in Art Historical Practice (Professor Carol Mavor)
- Black on Screen: Issues in Representation (Dr Rajinder Dudrah)
- Filming War, Filming History (Dr Ana Carden-Coyne)
- Postcolonial Narratives: Space, Mobility and Diaspora (Dr Anastasia Valassopoulos)
- Black Cultural Studies in Post-Civil Rights America (Dr Eithne Quinn)
- Early Modern Masculinities (Dr Jerome de Groot)

From the School of Social Sciences:

- Feminism and Political Theory (Dr Angelia Wilson)
- New Approaches to the Study of Family Life (Professor Carol Smart)
- Methodological Issues in Sociological Research (Dr Brian Heaphy)
- New Developments in Theories of Gender and Sexuality (Dr Bridget Byrne)

Funding

For details on fees and funding at the university, see: <http://www.alc.manchester.ac.uk/fees/>

SCHOOL CONTACT DETAILS

For further information about the courses, or about qualifications, please contact:

Postgraduate Admissions
School of Arts, Languages and Cultures
Mansfield Cooper Building
The University of Manchester
Oxford Road
Manchester
M13 9PL
United Kingdom

tel +44 (0)161 306 1259

email masalc@manchester.ac.uk

For the most up-to-date course information, please visit our website:

www.manchester.ac.uk/alc

SCHOOL OF ARTS, LANGUAGES AND CULTURES

The newly formed School of Arts, Languages and Cultures is the largest grouping of arts, languages and humanities scholars in the UK. It is home to some 6500 students, of which about 1000 are postgraduates, and around 350 academic staff working at the forefront of seventeen disciplines:

- Archaeology
- Art History and Visual Studies
- Classics and Ancient History
- Drama
- East Asian Studies
- English and American Studies
- French Studies
- German Studies
- Linguistics and English Language
- History
- Italian Studies
- Middle Eastern Studies
- Music
- Religions and Theology
- Russian and East European Studies
- Spanish, Portuguese and Latin American Studies
- Translation and Intercultural Studies

The School is also home to the University Language Centre.

The School's interests are in the fields of human cultures, beliefs, institutions and languages (from the most widely spoken global languages to those which are endangered). Its work embraces the material, visual, linguistic, textual, social and performative dimensions of human society past and present, and as such fosters a rich interdisciplinary culture led by world-renowned scholars with a diversity of expertise, from analysts to creative artists, from formal linguists to cultural critics, from historians to cultural theorists. The units which make up the School have an outstanding research profile as demonstrated by the fact that two of those units were ranked top in their subject area in the UK, following the results of the government's Research Assessment Exercise in 2008, and a further two were ranked in the top 3. Overall, more than 50% of our research was rated 'world leading' or 'internationally excellent'. Our commitment to research enriches our teaching, by bringing renowned international speakers to the School and sustaining a culture of research seminars, workshops and conferences. It also ensures that our curriculum is continually refreshed.

Our programmes are designed to teach people how to think, and our students tell us they find them challenging and rewarding, as well as good preparation for careers or further study. The student experience combines the advantages of belonging to a specific subject community with the extensive choice that a large and diverse School can offer. We use a wide range of teaching methods, both traditional and innovative. These include lectures, small-group seminars, and tutorials as well as various on-line activities which draw on the latest technology.



We strive to integrate work-related skills and experience into our degree programmes, and we encourage our students to think about and develop their career interests, aims and abilities, through both academic and extra-curricular activities. Our awardwinning Careers Service will work in partnership with you throughout your degree to improve your employability and prepare for the competitive jobs market.

Research and teaching in the School of Arts, Languages and Cultures are supported by rich resources within the University. These include the John Rylands University Library, with its unique Special Collections housed in the refurbished Deansgate building; the University Language Centre, with its own language multi-media resource library; the Race Relations Archive; the Manchester Museum; the Whitworth Art Gallery, as well as other distinguished Manchester archives and museums. Other cultural assets at the University of Manchester include the Martin Harris Centre for Music and Drama, Jodrell Bank Observatory, and, new for 2012, the Alan Gilbert Learning Commons.

We maintain a network of partners in research training that involves a wide range of major cultural institutions across the North West. The University and the city also offer superb facilities for almost any academic or recreational interests you might wish to pursue. High profile festivals are a major part of Manchester's cultural life, and the School is involved in many of these, including the Manchester Literature Festival, Manchester Histories Festival and Manchester International Festival.

The School has a strong interdisciplinary orientation and houses the Centre for Interdisciplinary Research in the Arts and Languages (CIDRAL).

Conclusion

The new School of Arts, Languages and Cultures is determined to become a global beacon for the study of Arts and Languages. Our objective is to create a top quality educational environment within which all our students will thrive. We have a strong commitment to social responsibility and public engagement. We want our graduates not only to be highly sought after by employers but also ready to play a constructive role as citizens in wider society. Through our research we seek to create and develop knowledge that makes a difference in the world; through our teaching we want to inspire our students to achieve their full human potential.



FIND OUT MORE ONLINE

Our University website holds a wealth of information on the many varied aspects of postgraduate student life. Here are some of the most popular topics – use the links for full details.

>>>



Accommodation – Discover your potential new home:

www.manchester.ac.uk/accommodation

Admissions and applications – Everything you need to apply to Manchester:

www.manchester.ac.uk/pgapplication

Alan Gilbert Learning Commons – Our brand-new, ultra-modern student learning environment:

www.manchester.ac.uk/library/learningcommons

Careers – Many major recruiters target our postgraduates; find out why:

www.manchester.ac.uk/careers

Childcare – Support for students who are also parents:

www.manchester.ac.uk/childcare

Disability support – For any additional support needs you may have:

www.manchester.ac.uk/dso

Funding and finance – Fees, scholarships, bursaries and more:

www.manchester.ac.uk/pg/fees

www.manchester.ac.uk/pg/funding

International students – Discover what we offer our multinational community:

www.manchester.ac.uk/international

IT services – Online learning, computer access, IT support and more:

www.manchester.ac.uk/itservices

Library – One of the UK's largest and best-resourced university libraries:

www.manchester.ac.uk/library

Manchester – Britain's 'original modern' city is right on your doorstep:

www.manchester.ac.uk/aboutus/manchester

Maps – Visualise our campus, city and University accommodation:

www.manchester.ac.uk/aboutus/travel/maps

Prospectus – Access online or order a copy of our 2013 prospectus:

www.manchester.ac.uk/pg/prospectus

Sport – Clubs, leagues, classes, facilities and more:

www.manchester.ac.uk/sport

Support – Dedicated academic, personal, financial and admin assistance:

<http://my.manchester.ac.uk/guest>

Students' Union – Societies, events, peer support, campaigns and more:

www.manchesterstudentsunion.com

Videos – See and hear more about our University:

www.manchester.ac.uk/aboutus/video

www.youtube.com/user/universitymanchester

Disclaimer

This brochure is prepared well in advance of the academic year to which it relates. Details of courses may consequently vary with staff changes. We therefore reserve the right to make such alterations to courses as are necessary. If we make you an offer of a place, it is essential that you are aware of the current terms on which your offer is based. If you are in any doubt, please feel free to ask us for confirmation of the precise position for the year in question, before you accept our offer.

Postgraduate Admissions
School of Arts, Languages and Cultures
Mansfield Cooper Building
The University of Manchester
Oxford Road
Manchester
M13 9PL
United Kingdom

tel: +44 (0)161 306 1259
email: masalc@manchester.ac.uk
www.manchester.ac.uk/alc

Royal Charter Number RC000797
DW859 09.12

