

HAVE I GOT SOUND ADVICE ON HOW TO WRITE AN EFFECTIVE RESEARCH GRANT PROPOSAL FOR YOU

ENGAGEMENT

Your research can be tested and developed through:

- focus groups
- knowledge transfer partnerships
- collaborating with colleagues within and across the university sector
- taking part in exchange programmes e.g. Marie Curie networks
- events held for and/or by the general public

HIYA!



DIME



IMPACT

Research is increasingly required to demonstrate a beneficial social, cultural or economic impact on non-academic communities. Examples of such impact include:

- increased company turnover
- enhancement or enrichment of quality of life
- improved processes and systems

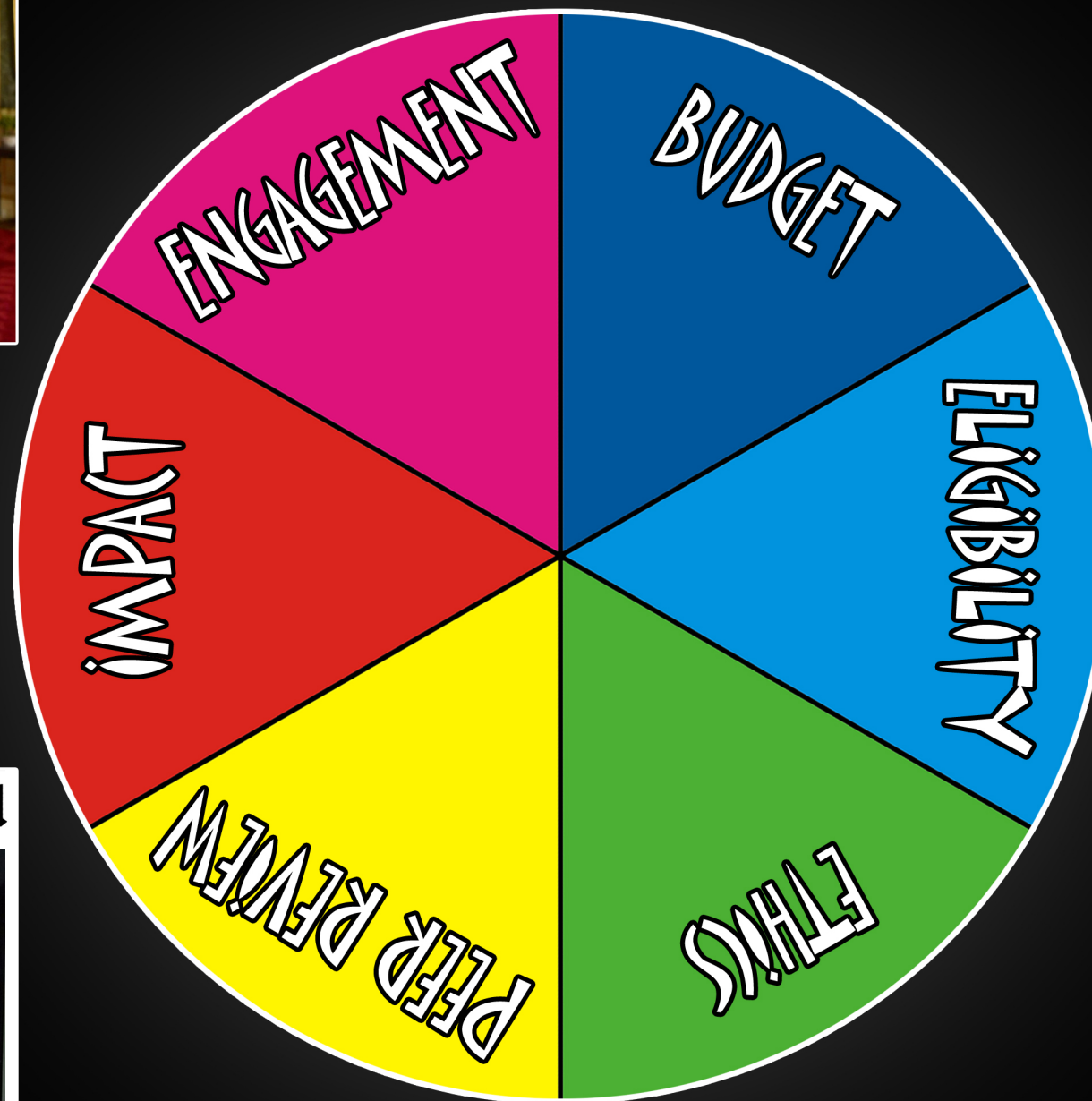
Daily Mail



PEER REVIEW

You will need a 'critical friend' to advise you on your application to help you with:

- theoretical and methodological context
- research design
- feasibility of the research project
- outcomes and impact
- value for money



FINANCIAL TRIALS



BUDGET

Full Economic Cost (fEC) is calculated to establish cost recovery. Other considerations are whether the budget:

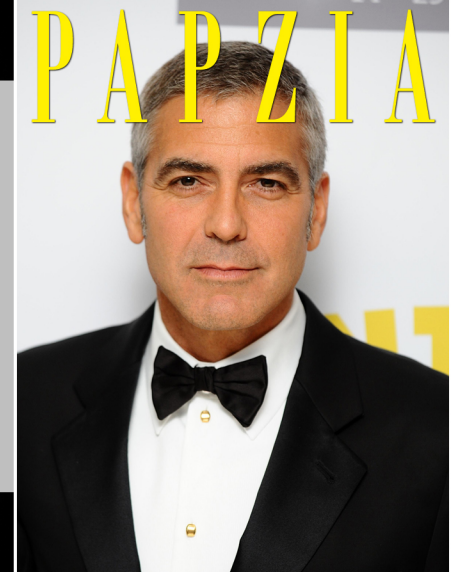
- represents value for money
- fully covers the cost of the resources required to complete the work
- adheres to funder criteria and is within their specified limits
- can be fully justified to the funder

ELIGIBILITY

Key considerations when establishing eligibility include:

- suitability of the host organisation
- eligibility of the applicant/s
- whether the research is relevant to the aims of the call
- whether all the resources requested adhere to funder rules
- sufficient existing in-house capacity to carry out the research

PAPZIA



THE Stun



ETHICS

Research is subject to University Ethics Committee regulations and must be:

- designed and conducted to meet certain ethical principles
- subject to proper professional and institutional procedure in terms of research governance
- subject to external ethical bodies, e.g. NHS, NIHR, etc