

BUILDING BACK BETTER:

DEVELOPING AGE-FRIENDLY CITIES POST COVID-19

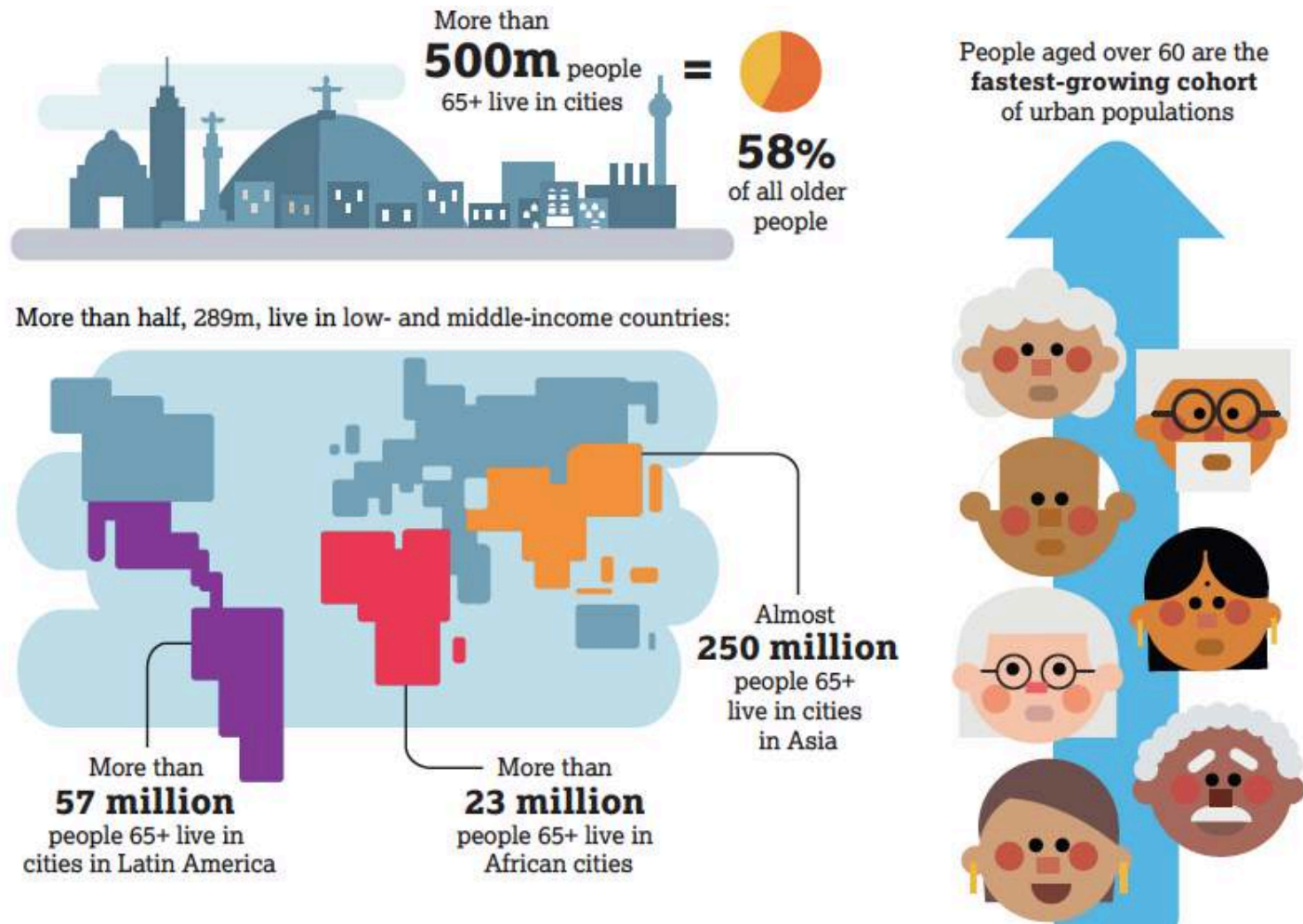
DR. TINE BUFFEL

Director of Manchester Urban Ageing Research Group (MUARG)
The University of Manchester

OUTLINE

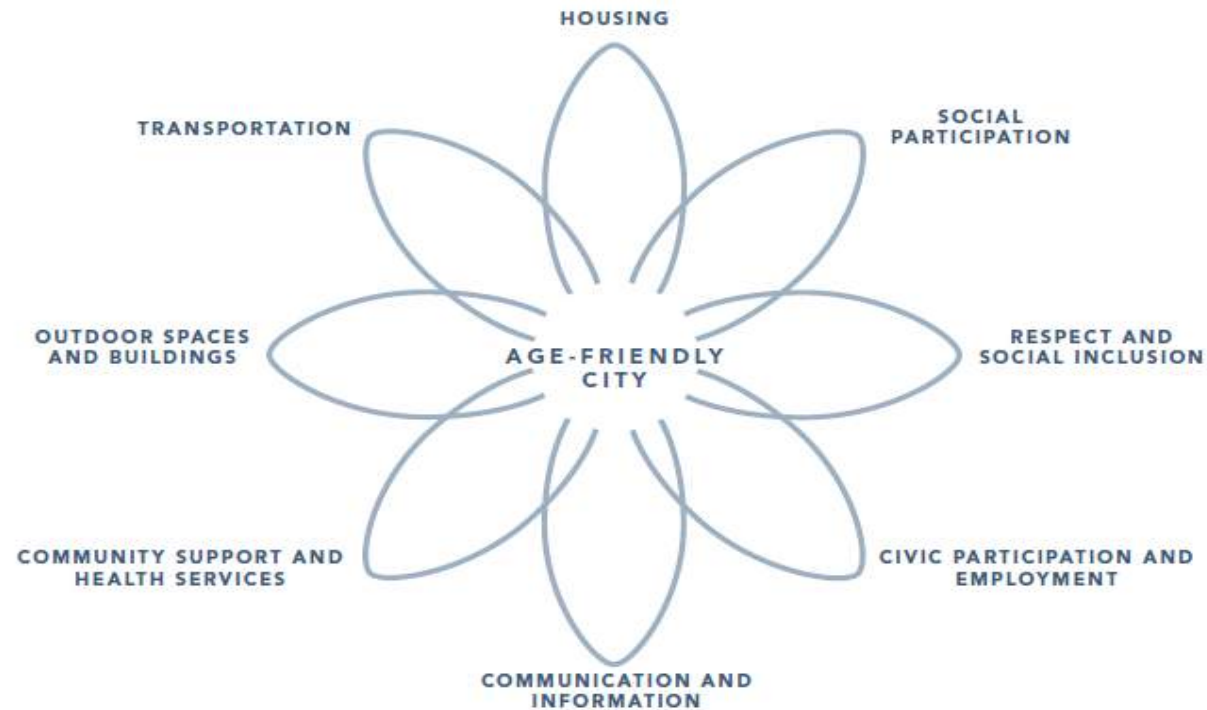
1. **Population ageing and urbanisation**
2. **Developing age-friendly cities and communities (AFCC)**
3. **COVID-19: Challenges for the AFCC movement**
4. **COVID-19 and AFCC: How can we build back better?**
5. **COVID-19 and AFCC: Developing a research agenda**
(Manchester Urban Ageing Research Group)

1. POPULATION AGEING AND URBANISATION



(HelpAge International, 2016)

2. DEVELOPING AGE-FRIENDLY CITIES AND COMMUNITIES

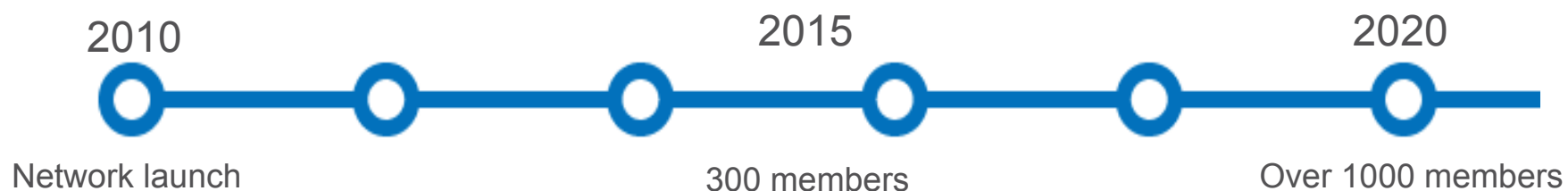


(WHO, 2007)

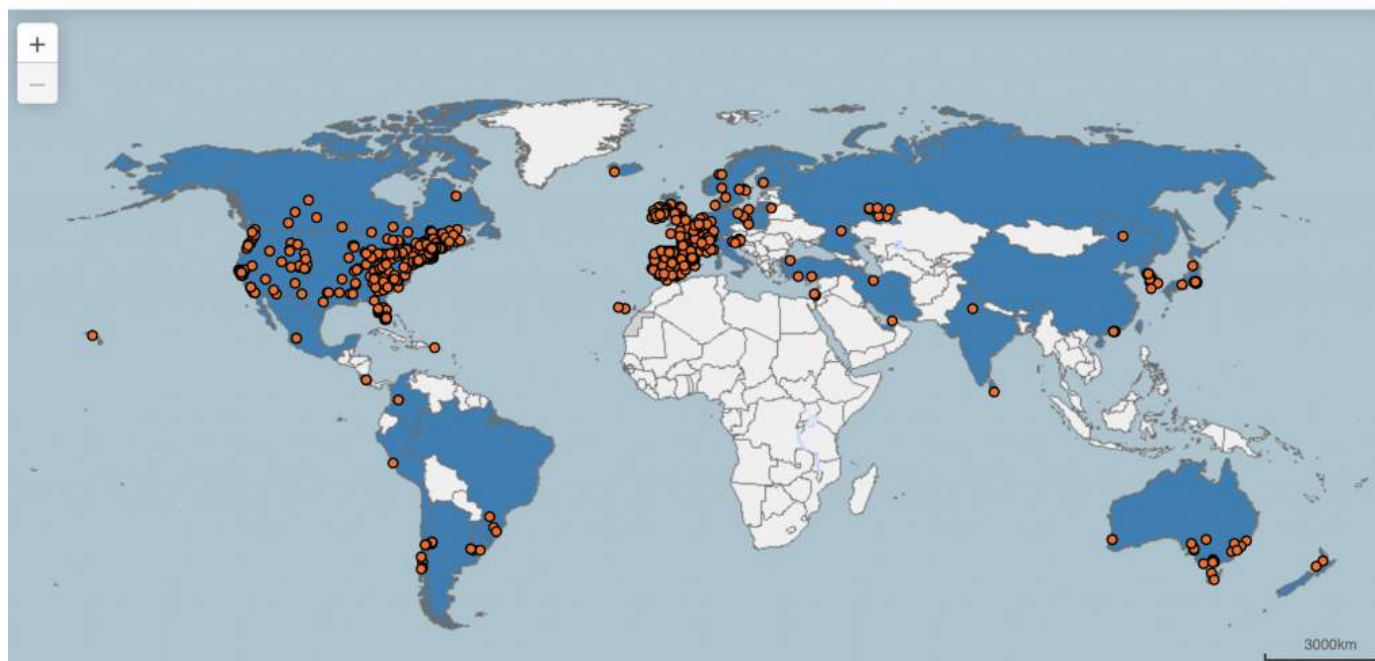


2. DEVELOPING AGE-FRIENDLY CITIES AND COMMUNITIES

GLOBAL NETWORK OF AGE-FRIENDLY CITIES AND COMMUNITIES



Global Network for Age-friendly Cities and Communities



(WHO, 2018)

2. DEVELOPING AGE-FRIENDLY CITIES AND COMMUNITIES

GLOBAL NETWORK OF AGE-FRIENDLY CITIES AND COMMUNITIES



(WHO, 2018)

3. CHALLENGES FOR AGE-FRIENDLY MOVEMENT IN THE CONTEXT OF COVID-19

Where you live matters greatly for the quality of life in old age

- **Health inequalities** between **poor and rich neighbourhoods** are increasing (Marmott Review, 2020)
- Causal relationship between **neighbourhood deprivation** and **social exclusion in later life** (Prattley, Buffel et al., 2020)
- Nearly three quarters of a million people over 75 and over live in '**non decent homes**'— a higher proportion than any other age group (Centre for Ageing Better, 2020)

It matters also for whether you are protected from Covid-19

- People (of all ages) living in **more deprived areas** in England have experienced **COVID mortality rates more than double** those living in less deprived areas (ONS, 2020)
- **COVID-19 related death rate** in England and Wales **rises by 25% in a local authority with twice the average number of ethnic minority people** (Nazroo and Becares, 2020)



3. CHALLENGES FOR AGE-FRIENDLY DEVELOPMENTS IN THE CONTEXT OF COVID-19

“AGEING IN PLACE”?
or
“PRISONERS OF SPACE”?

**Age-friendly initiatives most urgently needed in areas with the
least infrastructure in place to develop such initiatives**



4. COVID-19 AND AFCC: HOW CAN WE BUILD BACK BETTER?

1. Focus on and tackle **housing and neighbourhood deprivation**
2. Develop **place-based recovery** strategies - **partnerships** beyond silos
 - Prioritise working *with* older people: **Co-production**
3. Tackle **health inequalities** & underlying social and economic inequalities
4. Change **narratives of ageing** - Promote **intergenerational** connections
5. Promote **digital inclusion** and new ways to maintain/provide **offline social connections** and support
6. Develop **tailored job-seekers support** - **financial security**
7. Link **high quality data** for **better science and policy**



4. COVID-19 AND AFCC: HOW CAN WE BUILD BACK BETTER?

ENSURING SOCIAL and SPATIAL JUSTICE

MUST BE AT THE CORE OF

POST COVID-19 RECOVERY PLANNING



5. COVID-19 RELATED RESEARCH MUARG

FUNDED BY:



GMCVO

IN COLLABORATION WITH:

GMCVO



MANCHESTER
BMENETWORK

LGBT
foundation



MANCHESTER
1824

The University of Manchester
Institute for Collaborative
Research on Ageing



5. COVID-19 RELATED RESEARCH MUARG: AIMS

1. To work with community organisations and activists in selected areas, examining **responses to Covid-19 and strategies for contacting and supporting older people.**
2. To examine, longitudinally, the **impact of “social distancing” measures on experiences of everyday life among diverse groups of older people from marginalised communities.**
3. To generate to **evidence to assist local, regional, and national policies** which aim to increase support for older people and organisations working on their behalf.

<https://www.micra.manchester.ac.uk/research/projects-and-groups/muarg/>



KEY REFERENCES

- [BLOG: Prisoners of space: How the COVID-19 lockdown is deepening inequalities in ageing](#)
- [BLOG: Examining the impact of social distancing on older adults](#)
- Buffel, T. Handler, S. and Phillipson, C. (2018). **Age-friendly cities and communities: A Global Perspective**. Bristol: Policy Press.
- Cotterell, N., Buffel, T. and Phillipson, C. (2018) **Preventing social isolation in older people**. *Maturitas*, [10.1016/j.maturitas.2018.04.014](#).
- Prattley, J., Buffel, T., Marshall, A. and Nazroo, J. (2020) **Area effects on the level and development of social exclusion in later life**. *Social Science & Medicine*. Vol 246: 112722.
- Yarker, S. (2019) **Social infrastructure: How shared spaces make communities work**. Manchester: MICRA.



Q & A



Thank you for your attention

