

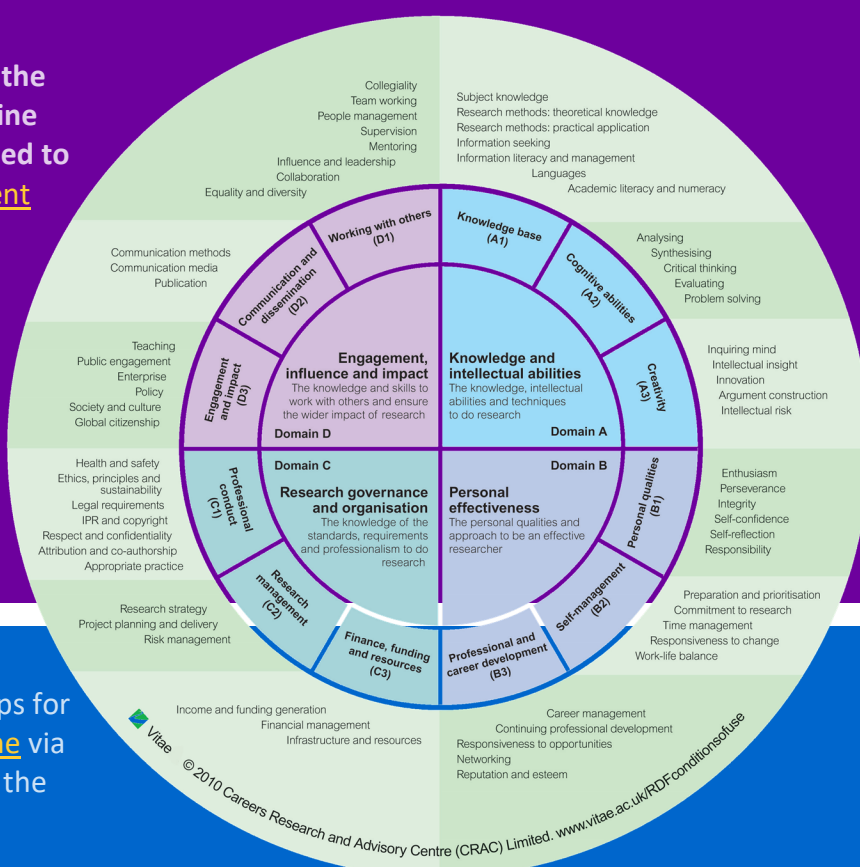
LinkedIn Learning

LinkedIn Learning is open to all staff at the University and has more than 2000 online courses available that have been mapped to the [International researcher development framework](#) (Vitae®).

Use the mapping document to identify learning opportunities and key skills and competencies that you would like to develop further.

⇒ [Get LinkedIn licence](#)

⇒ [Download mapping document](#)



CARD Courses

You can access resources from workshops for the [Researcher Development Programme](#) via the training catalogue (from the date of the original scheduled workshop).

Additionally we have fully online courses including:

[Effective Presentation Skills](#), [Research Grant Applications](#), [Academic Writing](#), [Guide to Influencing Effectively](#), [Difficult Conversations](#), [Communicating Assertively](#) and [Giving Feedback](#).

Career Development and Mentoring

You can access careers support to help establish your independent research careers as well as careers beyond academia. In addition, there is a wide variety of mentoring and coaching opportunities for you to explore your personal and career goals and commit to actions to maximise your future potential.

⇒ [One-to-one career consultations](#)

⇒ [One-to-one promotion and fellowship support](#)

⇒ [Confidential coaching and mentoring schemes](#)

⇒ [FutureLearn career management](#) for early career researchers

Other Resources

There is a wealth of other resources available across the University including .

⇒ [Staff learning and development](#)

⇒ [Intellectual Property Resources](#)

⇒ [Research Impact Resources](#)

⇒ [My Research Essentials](#)

⇒ [Methods@Manchester](#)

⇒ [University Coronavirus Research FAQs](#)