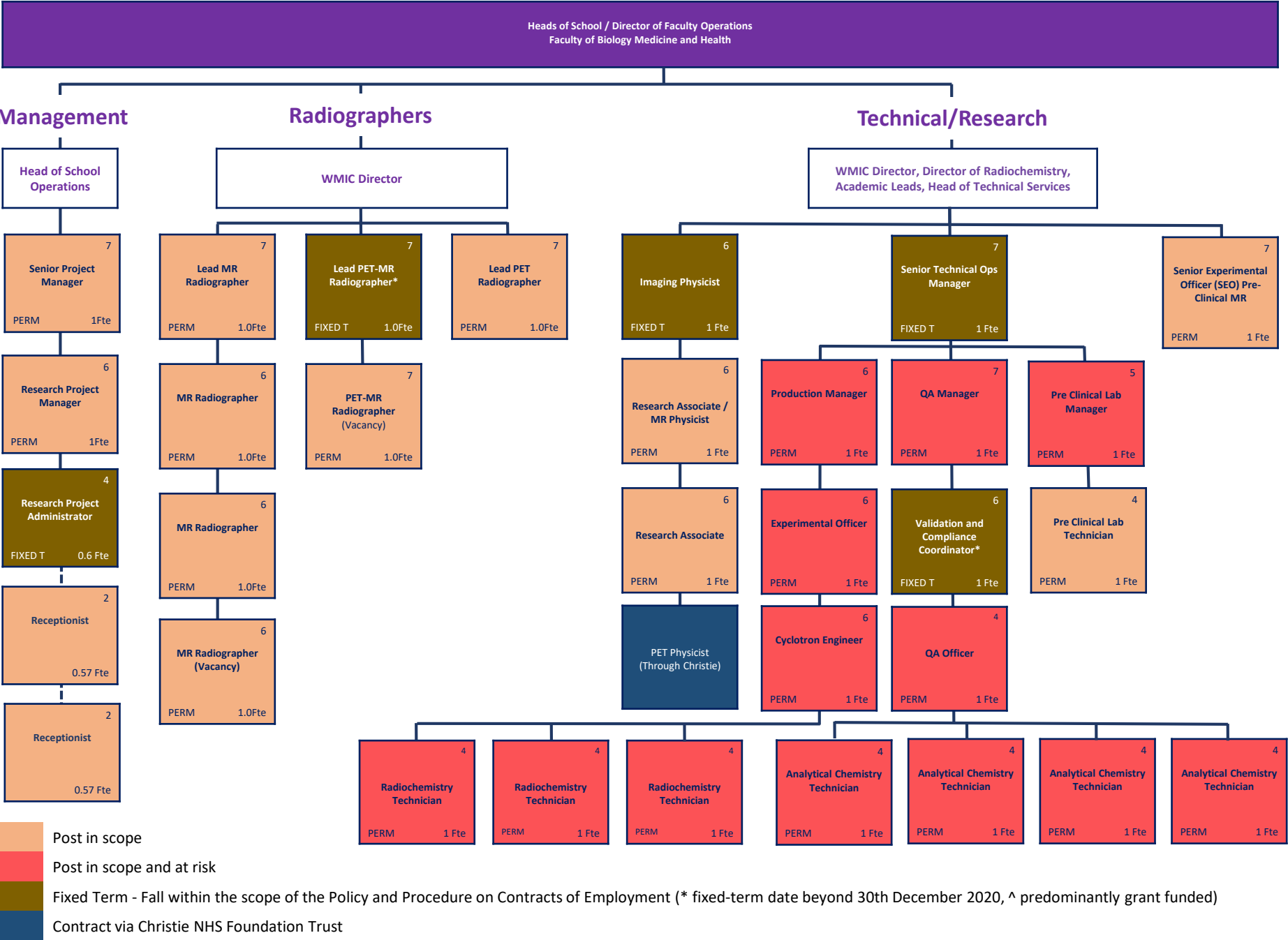
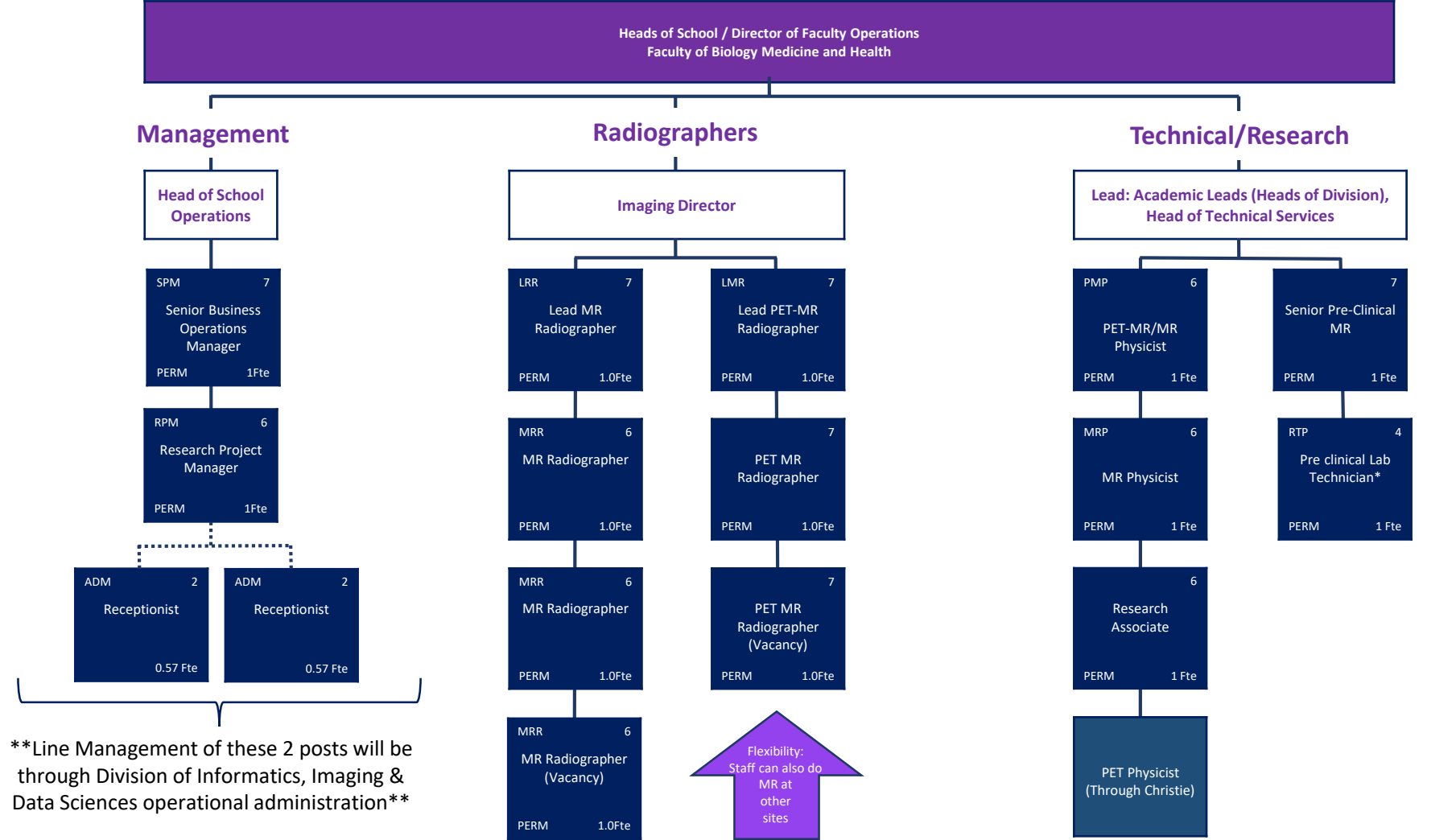


Current organisational structure | Wolfson Molecular Imaging Centre (WMIC)



Proposed organisational structure (1st January 2021)| Imaging Facilities University of Manchester



Line Management of these 2 posts will be through Division of Informatics, Imaging & Data Sciences operational administration

This structure will be governed through the Imaging Facilities Strategic Leadership Team (IFSLT)

*Post line managed through Faculty Technical team

- New Post
- New Job Description only
- Contract via Christie NHS Foundation Trust