

MANCHESTER
1824

The University of Manchester

ARTS, LANGUAGES AND CULTURES

POSTGRADUATE
PROSPECTUS
2020 ENTRY

uom.link/salc-pg

CHOOSE MANCHESTER

CONTENTS

Why Manchester?	4
Alyx's Manchester	6
More than a degree	8
The Graduate School	10
Culture on campus	12
Make an impact	16
Challenging the Institution	18
Fees and funding	20
How to apply	22
Our courses	24
Path to PhD	80
What to expect as a postgraduate researcher	82
Research training and professional development	84
Finding your supervisor	86
Supporting you and your studies	88
Let's talk	91

WELCOME

"Welcome to the School of Arts, Languages and Cultures at The University of Manchester.

I'm Ben and I'm studying International Disaster Management. I wanted to do a master's because I felt it would give me a springboard into the humanitarian field, as well as in-depth knowledge and opportunities to explore such an intriguing area of work.

The School of Arts, Languages and Cultures is one of the largest of its kind in the UK and having access to such a diverse humanities and arts community has given me the chance to collaborate with a wide range of students on interdisciplinary projects and presentations. The Graduate School also provides a great space to meet, work and attend workshops and talks with fellow postgraduate students.

Being at the University has given me an invaluable year of living in a great city, meeting amazing people, learning from experts, and developing crucial research skills.

Study here, and I'm sure that you'll get as much out of it as I have."

Ben Walkling

International Disaster Management MSc graduate



Chat to our current students:
uom.link/salc-pg-unibuddy

Discover our postgraduate courses:
uom.link/pg-salc

WHY MANCHESTER

Study with us and you'll be part of one of the largest groupings of arts, languages and cultural scholars and students in the UK, attracting some of the brightest creative minds from across the globe.

You'll benefit from our diverse and multidisciplinary academic community - set at the heart of the creative capital of the north - where you'll be inspired to be the best you can be, preparing you to take the next steps in your career, or delve deeper into study.



Enhance your employability; whether you're looking to start a new career, change jobs or progress in your current role. The University of Manchester is the most targeted university by the nation's top graduate employers.*



See things differently and take advantage of our broad range of subject areas - including teaching in nearly 20 languages.



Learn through course content that's directly influenced by meaningful research, at a university where 83% of the research activity has been rated 'world-leading' or 'internationally excellent'.**



Engage with Manchester's trailblazing creative scene and build professional networks through our close partnerships with top art galleries, theatres and museums in the city and beyond.



Benefit from access to our dedicated Graduate School - an online and physical community at the cutting edge of research.



Make the most of the University's cultural assets, including Manchester Museum, John Rylands Library and the Whitworth Gallery, the holdings of which feature in many of our courses.

Explore all we have to offer:

uom.link/salc-pg

*The Graduate Market in 2019, High Fliers Research; Higher Education Statistics Agency, 2018

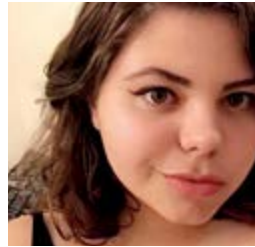
** 2014 Research Excellence Framework (REF)

W

ith so much for you to experience at The University of Manchester, your learning will be boundless. You'll be inspired by world-leading projects and minds, making global connections and international friends. Develop your talents, discover new interests and chase new dreams.



ALYX'S MANCHESTER



MA Film Studies student Alyx takes us through some of her favourite bits of the University campus and surrounding areas.

MANCHESTER STUDENTS' UNION (SU)

The SU puts on special events just for postgrads so that you can get to know your peers across the University. Postgrad Pizza is a personal favourite! All student societies are based here so don't be shy about joining whichever takes your fancy. It's also a fantastic place to work while studying.



GRADUATE SCHOOL (ELLEN WILKINSON BUILDING)

A building just for us postgrads! Located right in the heart of campus, it has study spaces and computer clusters, as well as a common area where you can relax, eat lunch or even get on with work. It's perfect for when the library gets a little too busy.



THE NORTHERN QUARTER (NQ)

Hard to narrow down to just one recommendation, the NQ is packed with cafés, bars, coffee shops, restaurants, cocktail bars and eateries. Wander down any street and you'll find something amazingly delicious and unique, it's a great place to socialise day or night and there are even a few spots perfect for studying.

HOME

A cinema, theatre and gallery all rolled into one, a day at HOME is always interesting. It showcases work by contemporary theatre-makers and artists, and screens indie and international films. Less than a 20 minute walk from campus, it has a lovely café and bar - there's no place like HOME.



THE PEOPLE'S HISTORY MUSEUM

Dedicated to the history of working-class people and democracy, this museum features exhibits on women's suffrage, trade unions, the cooperative movement and lots more. It holds the largest collection of political material in the country and fills you with inspiration to create change and recognise that individuals can make a difference together.

Chat to our current students about life in Manchester:
uom.link/salc-pg-unibuddy

MORE THAN A DEGREE

A stimulating academic environment and thriving student community at the School of Arts, Languages and Cultures means you'll build on your existing skills and knowledge, and grow personally and professionally while you're here - setting you up for an exciting and fulfilling future.

As one of the largest schools of its kind, you'll benefit from the vast scale and breadth of our disciplinary areas, including human cultures, beliefs, institutions and languages, and our collaboration with other subject areas in Humanities and the wider University.

Study with us and you'll meet people from every corner of the globe, have your curiosity sparked, take creative risks, understand more about the subjects you're passionate about - and discover new passions.

"The School of Arts, Languages and Cultures at Manchester is one of the largest, most comprehensive and most successful arts and humanities groupings in the world, building on a long tradition. Our consistently high results in the Postgraduate Taught Experience Survey also prove that we care deeply about our students and devote great attention to your current needs and aspirations for the future through our dedicated Graduate School.

When you come here, you'll enjoy our newly-refurbished facilities, including the state-of-the-art University Language Centre, a magnificent North Foyer, restored to its former glory, and the superb riches of the John Rylands Library. Crucially, you'll find world-renowned specialists in your field of study, a thriving research culture and a postgraduate training programme specifically tailored to the needs of our MA students."



Alessandro Schiesaro
Head of the School of
Arts, Languages and
Cultures

Explore the School of Arts, Languages and Cultures:
uom.link/salc-pg





SPECIALIST SUPPORT FROM OUR GRADUATE SCHOOL

As a master's student in the School of Arts, Languages and Cultures, you'll automatically become part of our Graduate School, a large but tight-knit community. You'll get to know other postgraduates from the full breadth of subjects, hear different perspectives, debate common interests and foster relationships and collaborations.

As well as the purpose-built Graduate School common area, you'll have access to dedicated study areas for master's and research students, meeting and seminar rooms, and a conference space.

Take part in exclusive events, including summer schools, talks, public lectures and film screenings; enriching your student experience and building a broader portfolio of skills and knowledge, something that employers increasingly look for.

We'll support you to start, develop or change your career through numerous training and development opportunities, application and networking advice, guides on how to get the most from your master's year and information on progression to PhD study.

How you can benefit from the Graduate School:

- Explore career options and opportunities with our Careers Information Team, whatever stage you're at.
- Access over 150 employers and build your professional networks at our Graduate Fair.
- Learn how best to do and start research with arts methods, a series of workshops, conferences and events exploring research in the arts.
- Strengthen your research ethics application by completing our invaluable training, if your project involves human participants.
- Get insights on how to write the best PhD application and research proposal by speaking to a dedicated adviser who has gone through the process themselves.
- Increase your chances of getting published in our academic writing workshops.

Get to know our graduate community:
uom.link/graduate-school

CULTURE ON CAMPUS

The University is proud to be home to some of Manchester's key cultural assets, giving you exclusive, behind-the-scenes access to a wealth of experiences that can enrich your degree.

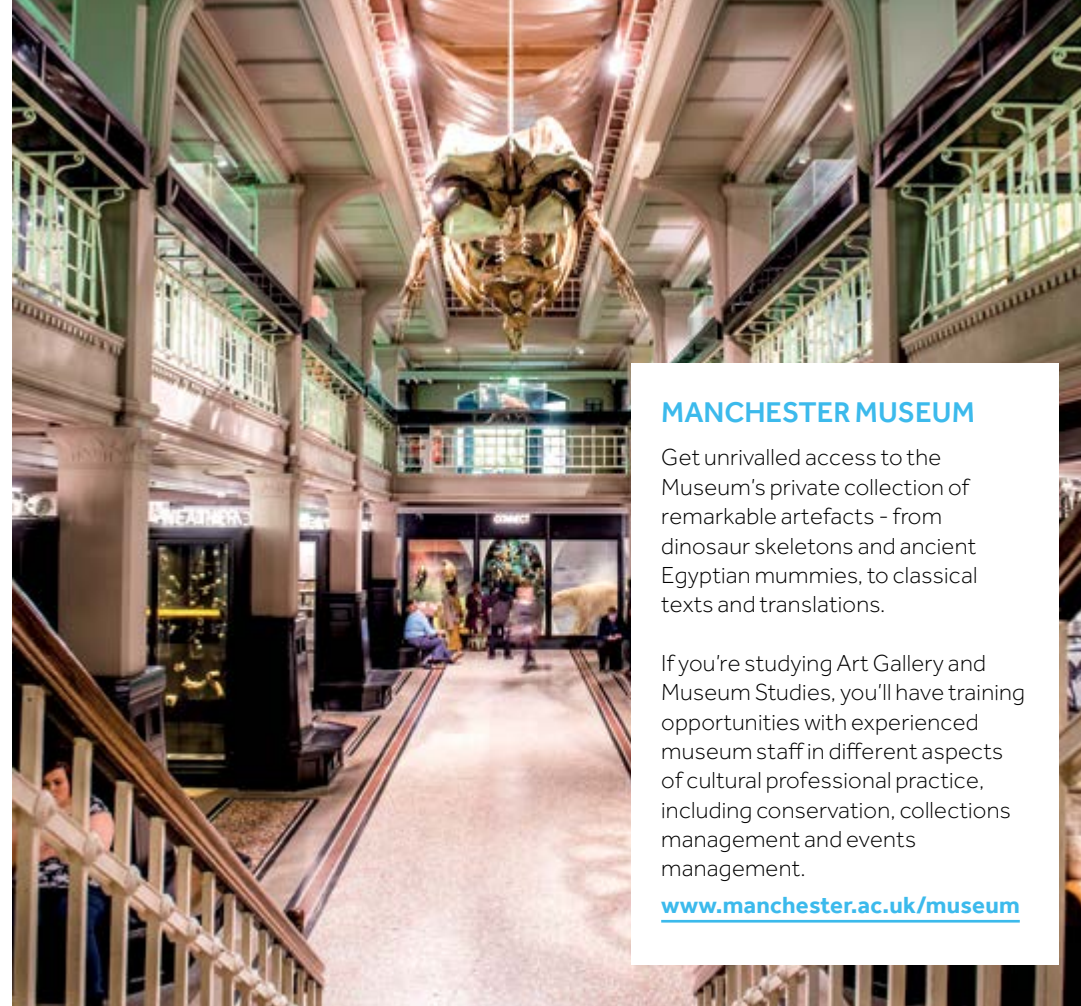


THE JOHN RYLANDS LIBRARY

This elaborate neo-gothic building is home to extensive special collections, including vast archives of historical material and rare volumes (including papyrus, medieval manuscripts and early printed books).

You'll have the chance to use these as part of your studies, especially if you're studying Classics and Ancient History, History, Medieval and Early Modern Studies or Religions and Theology.

www.manchester.ac.uk/rylands



MANCHESTER MUSEUM

Get unrivalled access to the Museum's private collection of remarkable artefacts - from dinosaur skeletons and ancient Egyptian mummies, to classical texts and translations.

If you're studying Art Gallery and Museum Studies, you'll have training opportunities with experienced museum staff in different aspects of cultural professional practice, including conservation, collections management and events management.

www.manchester.ac.uk/museum



THE WHITWORTH

This high-profile gallery, which is part of the University, is used extensively in teaching and learning, and offers exclusive access to masterpieces by Turner, Blake, Van Gogh and Picasso - as well as the most significant collection of outsider art in the UK.

Arts Management, Policy and Practice, and Art Gallery and Museum Studies are among the courses which involve placements with this multi-award-winning institution. Other volunteering opportunities are also available for our students.

www.manchester.ac.uk/whitworth



THE MARTIN HARRIS CENTRE FOR MUSIC AND DRAMA

The fantastic provision of equipment and resources at our centre for music and drama is another asset, particularly if you're studying Drama, Music or Film Studies.

You'll have opportunities to perform in the 350-capacity Cosmo Rodewald Concert Hall, experiment with impressive technical equipment in The John Thaw Studio Theatre, and explore new possibilities at the NOVARS Research Centre, our highly-regarded suite of computer music studios.

www.manchester.ac.uk/martinharriscentre



While studying for my MA, I worked in various capacities at The Whitworth, Manchester Museum, John Rylands Library and the Ahmed Iqbal Ullah Education Trust, which are all linked to the University.

My experience and qualifications helped me gain an immediate Curatorial and Collections internship at the Ben Uri Gallery in North London before I secured my current role.

Rebecca Bailey
Religions and Theology
MA graduate
Exhibitions Assistant at
Constantine Ltd

Chat to our current students:
uom.link/salc-pg-unibuddy

MAKE AN IMPACT

As a research community we think critically to tackle issues, big and small. We're always looking to make an impact with everything we do, with a shared ambition to always do better.

You'll be encouraged to use your skills, expertise and findings to make a difference, whether it be locally – working with communities within Manchester – or globally.

The connections we have with communities, organisations and individuals outside of our campus gives you the chance to form relationships, exchange knowledge and shape your research to have the greatest impact.

Discover the impact our students make:
uom.link/hums-phd-impact

The University is so connected to the people of Manchester and to different organisations. It's allowed me to build connections across different institutions outside of academia, enabled me to have an impact with my research and meet those who would benefit from it, and also get a lot of knowledge as to how my research could be applied.

Jaime Garcia-Iglesias
PhD student



CHALLENGING THE INSTITUTION

Humanities research is shaping the world. Our researchers are making it their life's work to make an impact and tackle challenges differently, to listen to both their heart and their head, and to inspire bright minds to follow them.

Here at The University of Manchester you'll have the opportunity to meet, be taught by and inspired by those who are changing the world we live in.

Meet Dr Abigail Gilmore, Senior Lecturer in Arts Management and Cultural Policy in the School of Arts, Languages and Cultures.


Lecturing in arts management conjures up visions of stark white cubes and priceless pieces to be revered in silent contemplation, but this isn't the image you get when given five minutes with Dr Abi Gilmore.

Her sociological background encourages her to critically engage with social, philosophical and historical aspects of the arts and culture, and the politics of how they're managed. Critical reflection on policy and practice and collaboration with communities are ingrained in the research culture at Manchester, where initiatives such as Creative Manchester are singling the city out as a place where the arts are for everyone.

"If it wasn't happening here at Manchester, there would be something seriously wrong with what we're hoping to do," she says, as she stands in the Art Garden of Manchester's iconic Whitworth Gallery on the brightest day in June.

Abi's research explores the evidence and business cases used in arts policymaking. It questions the thinking that if you can find enough evidence of economic return from investment in the arts, there will be more down the line. Her latest project explores broader relationships with culture and the values people attach to their participation; revealing parks, pubs, football, clubs and churches, rather than theatres and galleries, as important sites.

"These places have value - they're where communities connect and feel creative in their everyday lives," she says. "Arts managers and policy-makers need to take these values into account when making decisions".



"Here at Manchester, there's a longstanding interest of engagement between the creative and cultural sector, and higher education."

FEES AND FUNDING

MASTER'S FUNDING

Government Loans

You can take out a non-means tested postgraduate loan of up to £10,280 if you're an UK/EU student starting a master's course in the 2020/21 academic year.

www.gov.uk/funding-for-postgraduate-study

The University of Manchester

There are various funding opportunities available to our master's students, including:

- The Manchester Alumni Scholarship, worth £3,000, available to all University of Manchester graduates awarded a first-class honours degree.
- Manchester Master's Bursary for students from underrepresented groups.
- The Manchester Postgraduate Scholarship of Academic Excellence, which offers up to 100 fee waiver scholarships worth £2,000 each to high-achieving undergraduates from a UK university.

For details, and to find out if you're eligible, visit:

uom.link/salc-uom-funding

The School of Arts, Languages and Cultures

We offer a number of School awards and subject-specific bursaries to outstanding master's applicants who meet certain requirements.

Find out if we can help you:

uom.link/salc-pgt-funding

Economic and Social Research Council (ESRC)

Four years of ESRC funding (1+3) is available through the North West Social Science Doctoral Training Partnership (NWSSDTP) for students in certain subjects to pursue postgraduate study through a master's (1 year) leading into a PhD (3 years).

www.nwssdtp.ac.uk

PhD FUNDING

Government loans

The UK government is offering doctoral loans of up to £25,700 to those studying PhDs and equivalent doctoral programmes, including professional doctorates. UK nationals who are ordinarily resident in England, aged 59 or under, not already receiving funding via a UK Research Council, will be eligible.

Find out if you're eligible:

www.gov.uk/doctoral-loan

The University of Manchester

We receive money from a range of sources to help you fund your research and have a range of awards on offer, covering tuition fees and a generous stipend.

We are part of two major doctoral training consortia in arts, humanities and social sciences funded by UK research councils – AHRC North West Consortium Doctoral Training Partnership (NWC DTP) and ESRC North West Social Science Doctoral Training Partnership (NWSSDTP).

The Presidents Doctoral Scholar (PDS) award scheme offers over 100 elite postgraduate research studentships per year and is open to students of all nationalities and across all research areas.

uom.link/salc-PAward

Search for PhD funding online:

uom.link/hums-phd-funding

TUITION FEES

Your fees will cover the cost of your study, as well as your registration, tuition, supervision, examinations and graduation.

Fees for all master's courses can be found at:

uom.link/salc-pgt

Fees for all PhD programmes can be found at:

uom.link/salc-phds

HOW TO APPLY

We want to make applying for your postgraduate studies as straightforward as possible, and we're there to support you throughout the process.

It is important to review the entry requirements before you apply, and you'll need several documents to complete the application form.

Check your course details carefully online before you start to make sure you have everything you need for a successful application.

FAST TRACK

If you are a current University of Manchester student, you can apply to most master's courses via the Fast-Track Scheme. You need to email us with your personal details (full name, current undergraduate course and student ID number), along with the name of the School of Arts, Languages and Cultures course you wish to be considered for. Where possible, we will make you a conditional offer.

APPLYING FOR A MASTER'S

uom.link/salc-pgt-apply

Email: masalc@manchester.ac.uk

Tel: +44 (0) 161 275 0322 / +44 (0) 161 306 1259

Entry requirements for our programmes vary.

Specific entry requirements for all master's courses can be found at:

uom.link/salc-pgt

APPLYING FOR A PhD

uom.link/salc-phd-apply

Email: PhDSALC@manchester.ac.uk

Tel: +44 (0)161 275 3559

Entry requirements for our PhD programmes can be found at:

uom.link/salc-phds

Get to know our graduate community:
uom.link/graduate-school

ART GALLERY AND MUSEUM STUDIES MA

Duration: 12 months full-time, 24 months part-time

WHERE WILL MY DEGREE TAKE ME?

Job destinations vary according to the interests, ambitions and skills of each individual, but most of our students are successful in obtaining professional posts in collections, exhibitions, education, interpretation, or some aspect of museum/arts management soon after completing the MA.

ABOUT THE COURSE

Our MA Art Gallery and Museum Studies course is ideal if you're considering a career in this sector and want to gain practical experience through placements during your studies, or if you're a professional and want to further develop your practice.

As part of the prestigious Institute for Cultural Practices at Manchester, you'll examine relevant issues related to museum theory and practice, visit high-profile museums, galleries and cultural organisations, and discuss ideas and issues with top professionals and academics in the field.

You'll take advantage of our excellent links to access a range of valuable work placements at notable cultural institutions across Manchester and beyond, including:

- Manchester Museum
- The Whitworth
- Tate Liverpool
- Museum of Science and Industry
- Manchester International Festival
- Royal Exchange Theatre

You'll also have opportunities to design and participate in live projects with cultural and heritage organisations in Manchester and go on field-trips across the UK and internationally.

COURSE CONTENT:

Compulsory units:

- Museum Studies
- Managing collections and exhibitions

Optional units include topics such as:

- Creative Learning
- Natural Heritage
- Business Strategies for the Arts
- Documentary Filmmaking
- Curating Ethnography
- Curating Art
- Digital Heritage

You may choose to take one optional course unit in a related subject area, for example, Archaeology, History or Art History.

Dissertation

You'll also complete a standard dissertation or practice-based dissertation on a research topic of your choice, in agreement with your dissertation supervisor.

Course units vary from year to year. Above are examples of the topics planned for 2020.

"In the MA Art Gallery and Museum Studies course, I found a home for my background in writing and dual interests in visitor experience and digital interpretation.

In addition, programme partnerships with the Whitworth and Manchester Museum allowed me to participate in projects with real, practical applications."

Meredith Whitfield
Art Gallery and Museum
Studies MA graduate



Explore emerging critical approaches and shifts in museum practice and theory.



Undertake a work placement in a museum, gallery or related cultural organisation in or around Manchester.



Extend your practice-based experience through live projects.



Develop a career in the museum or arts sectors.

For a full list of course units, and to explore the Art Gallery and Museum Studies MA, visit:
uom.link/salc-icp

ARTS MANAGEMENT, POLICY AND PRACTICE MA

Duration: 12 months full-time, 24 months part-time

WHERE WILL MY DEGREE TAKE ME?

As well as going into further research, our postgraduates pursue successful careers as managers, administrators, policy-makers or practitioners in various branches of the arts, cultural and creative industries.

Opportunities exist in the public, private, and voluntary sectors; theatres, opera houses, concert halls, arts centres, museums and galleries; the media; the Arts Council, British Council and local authorities.

Graduate roles include programming manager, marketing director, education director, development or outreach officer, tour organiser, agent or artist's manager, consultant or market researcher, and freelance workshop leader.

ABOUT THE COURSE

Our interdisciplinary MA Arts Management, Policy and Practice course covers a wide range of expertise associated with running arts organisations and coordinating arts and cultural programmes and events, as well as the strategic development of art forms, cultural leadership practices and local cultural management.

You'll draw on broad literatures and sources, covering areas from the creative arts, drama, music, art history, critical theory and cultural economics, to business studies, organisational studies and critical cultural policy studies.

You'll also develop your knowledge and understanding of the history, theory and practice of arts management to gain an insight into the range of professional opportunities in the creative and cultural sector, and to acquire direct experience of many areas of arts management.

Benefit from a strong practical, hands-on element and get a solid theoretical grounding; exploring cultural policy in its historical context, as well as critical engagement with the philosophical, political, social and economic imperatives informing contemporary practice.

COURSE CONTENT:

This course consists of taught units and a dissertation, and brings together theory and practice in diverse areas including:

- Production and programming
- Policy-making
- Strategic management and leadership
- Finance and resource development
- Marketing
- Audience development
- Engagement
- Participation
- Education
- Research
- Evaluation

Course units vary from year to year. Above are examples of the topics planned for 2020.



Combine key knowledge and skills in arts management and cultural policy with specialist options.



Benefit from more than 50 active partnerships with arts and cultural organisations, offering opportunities for practice-based research, expert teaching and placements.



Join our growing international network of current and future arts leaders, made up of alumni, museum professionals and arts managers, and current students from all over the world.

For a full list of course units, and to explore the Arts Management, Policy and Practice MA, visit:
uom.link/salc-icp

CLASSICS AND ANCIENT HISTORY MA

Duration: 12 months full-time, 24 months part-time

WHERE WILL MY DEGREE TAKE ME?

You'll develop a wealth of transferable skills, giving you opportunities to explore a very wide range of career options in the private or public sector, including teaching, contract researching, local or central government, commerce or industry.

Recent MA graduates have gone on to a wide variety of careers in education and business, as well as to vocational MAs (eg in Gallery and Museum Studies), and PhDs in Classics or Ancient History.

ABOUT THE COURSE

This is a flexible and diverse course, enabling advanced study of ancient languages, literature, history, archaeology, and culture.

The course content reflects the broad, multidisciplinary nature of the subject, and of our specialisms here in Manchester, including Latin and Greek, the history of Greek and Roman antiquity, and Greek and Roman literature, philosophy, and culture.

We offer a specialist route through the MA - the City of Rome pathway - which involves taking a residential course unit at The British School at Rome.

COURSE CONTENT:

Compulsory units:

- **The Study of the Ancient World**
Introducing you to the key research questions and methods involved in advanced study of the discipline and giving you the opportunity to develop and present your own research project.
- **Greek and Latin language**
We expect all MA students to study either Greek or Latin, and we offer different levels of language units, to suit students who are new to Latin or Greek, and those who have already studied one or both languages at an appropriate level.

Optional units include topics such as:

- Genre in Ancient Philosophy
- Greek Lyric Poetry
- Augustan Rome
- Urbanism in Ancient Egypt

As a combined Department of Classics, Ancient History, Archaeology and Egyptology we also now offer course units and individual classes on the archaeology of ritual, on heritage theory and the ethics of museum practice, and on the history and art of Ancient Egypt.

You may take one approved unit from another subject area (for example, History or Archaeology), or a Directed Reading course by negotiation with a tutor and with the Postgraduate Programme Director.

Course units vary from year to year. Above are examples of the topics planned for 2020.



For a full list of course units, and to explore the Classics and Ancient History MA, visit:

uom.link/salc-pg-classics



Join a department with a long and distinguished history, as well as an excellent record in both teaching and research, supported by exceptional resources.



Enjoy opportunities to begin or continue your study of Ancient Greek or Latin.



Access the exclusive holdings of The John Rylands Library, home to one of the most important collections of papyri in the world, including fragments of works by ancient authors such as Homer and Hippocrates.

COMPOSITION (ELECTROACOUSTIC MUSIC AND INTERACTIVE MEDIA) MusM

Duration: 12 months full-time, 24 months part-time

WHERE WILL MY DEGREE TAKE ME?

Our graduates have pursued successful careers in musical and non-musical fields. Some continue to postgraduate research or teaching.

Other areas of work include recording studios, entrepreneurship, the creative industries, music publishing, music journalism and performance. Careers outside of music have included computer programming, theatre, accountancy, law, social work and human resources.

ABOUT THE COURSE

This course will give you an in-depth knowledge of modern compositional techniques, methodologies and associated aesthetics in creative work that intersects with technology and other artistic or scientific forms.

All your teaching, research and compositional work will be carried out in the NOVARS Research Centre for Electroacoustic Composition, Performance and Sound Art, with its contemporary electroacoustic studios.

You'll have the opportunity to perform your work using the 55-loudspeaker sound diffusion system of MANTIS (Manchester Theatre in Sound) and through events such as the Locativeaudio Festival and Sines and Squares Festival for Analogue Electronics and Modular Synthesis.

Acousmatic, mixed, live electronic and multimedia works are all possible, and you'll be able to incorporate the spatialisation of sound and interactive new game-audio media into the presentation of your work.

COURSE CONTENT:

This MusM consists of taught units and a portfolio.

Compulsory units:

- Composition Project
- Fixed Media and Interactive Music

Optional units include topics such as:

- Aesthetics and Analysis of Organised Sound
- Interactive Tools and Engines
- Contemporary Music Studies
- Advanced Orchestration
- Historical or Contemporary Performance

You may study topics outside of your subject area, including Computer Vision, Mobile Communications and Ethnographic Fieldwork.

You can also choose to take a placement unit where you'll spend time with an arts and cultural organisation, business or service provider to gain valuable workplace experience.

Course units vary from year to year. Above are examples of the topics planned for 2020.

"The University facilities in general are excellent, and those for electroacoustic composers are outstanding. NOVARS is one of only a handful of facilities of its kind in the UK, and it's gained an international reputation for producing award-winning composers."

Danny Saul
MusM Composition graduate,
Composer / Musician



Pursue your career as a composer working with technology and audio media, or a PhD in electroacoustic composition.



Learn in advanced facilities, including our dedicated electroacoustic studio complex.



Study in a city that's home to more professional music making than any UK city outside of London.



We are the #1 ranked Music department in the UK, according to the Sunday Times Good University Guide 2020.

For a full list of course units, and to explore the Composition (Electroacoustic Music and Interactive Media) MusM, visit:
uom.link/salc-pg-music

COMPOSITION (INSTRUMENTAL AND VOCAL MUSIC) MusM

Duration: 12 months full-time, 24 months part-time

WHERE WILL MY DEGREE TAKE ME?

Many graduates achieve success as composers, in some cases receiving professional performances from soloists, ensembles and orchestras all over the world.

Some continue to postgraduate research or teaching, with other areas of work including arts management and the culture industries, music publishing, music journalism, librarianship, music therapy and performance. Careers outside of music have included accountancy, law, social work and human resources.

ABOUT THE COURSE

With a strong focus on practical music-making and supported by an outstanding programme of workshops and performances by professional musicians, this master's offers an invaluable opportunity for you to hone your skills and develop your own personal voice.

You'll benefit from strong links to prominent ensembles, including the BBC Philharmonic and Manchester Camerata, and you'll have unique opportunities to develop professional skills, through collaborating, rehearsing and networking with professional musicians.

Our diverse course means you'll also have outreach opportunities and collaborate in the creation of performances. You'll also enjoy flexibility to develop your own compositional and research interests, including opportunities to take up electroacoustic course units to broaden your expertise.

COURSE CONTENT:

This MusM consists of taught units, a composition project and a portfolio.

Taught units include topic such as:

- Compositional Etudes
- Contemporary Music Studies
- Advanced Orchestration
- Aesthetics and Analysis of Organised Sound
- Interactive Tools and Engines
- Historical or Contemporary Performance

You can also choose to take a placement unit where you'll spend time with an arts and cultural organisation, business or service provider to gain valuable workplace experience.

Course units vary from year to year. Above are examples of the topics planned for 2020.

"Having the opportunity to work with professional ensembles from across Manchester and Europe has been very enjoyable and interesting, particularly given the range of ensembles that have been made available to me for workshopping pieces."

Elizabeth Ditmanson
MusM Composition graduate,
Composer / Sound and
Visual Artist



Enjoy a course with a strong focus on practical music-making.



Gain professional skills through collaborating, rehearsing and networking with professional musicians.



Study in a city that is home to more professional music-making than any UK city outside of London, with three professional orchestras and internationally-recognised institutions such as the BBC and Opera North.



We are the #1 ranked Music department in the UK, according to the Sunday Times Good University Guide 2020.

For a full list of course units, and to explore the Composition (Vocal and Instrumental Music) MusM, visit:
uom.link/salc-pg-music

CREATIVE WRITING MA

Duration: 12 months full-time, 24 months part-time

WHERE WILL MY DEGREE TAKE ME?

Some students pursue their literary careers and go on to become published writers, while others follow their passion through publishing, journalism and careers in the arts sector. Other graduates go on to PhD study or follow careers in law, librarianship and teaching.

ABOUT THE COURSE

Study on our competitive MA Creative Writing master's course and you'll be part of the prestigious Centre for New Writing, where we bring together world-famous writers to teach people how to produce novels, non-fiction, short stories, poems, plays and screenplays.

It's a selective degree programme, where talented writers and critics can meet to exchange ideas and opinions. The Centre is founded on the simple but important principle that good writing and good reading go together.

You'll benefit from seminars with Jeanette Winterson, workshops in fiction, non-fiction and poetry writing led by published, award-winning writers, and intensive, one-to-one instruction from writers-in-residence.

You'll also have access to Literature Live and The Complete Works, two series bringing the best contemporary prose writers and poets to Manchester, skills-related sessions delivered by professionals in the publishing industry, mentorship from our Burgess Fellows, and regular visits from literary agents and editors, including leading literary agency PFD, which sponsors an annual prize for best student work.

COURSE CONTENT:

There are no mandatory units as part of this course. Students are required to choose a combination of workshops and seminars based on their individual focus in poetry, fiction and creative non-fiction.

Workshops and seminars cover topics to support your writing and contextual knowledge, such as:

- Reading and writing poetry
- Contemporary fiction
- Creative non-fiction
- Forms of writing

You will submit a dissertation of your own fiction writing or poetry.

"My relationship with the staff at the Centre for New Writing was a big part of how much I enjoyed the course and how successful I was to go on to be. Since the MA, I finished a book, got an agent and have been published."

Those who continue to work and really take as much from the course as they can, are in such a good position to achieve the success they're after."

Marli Roode
Creative Writing MA graduate



Become part of a network of alumni including Sophie Hannah, Susan Barker, Chris Killen, Rebecca Perry, Jess Moor and Joey Connolly.



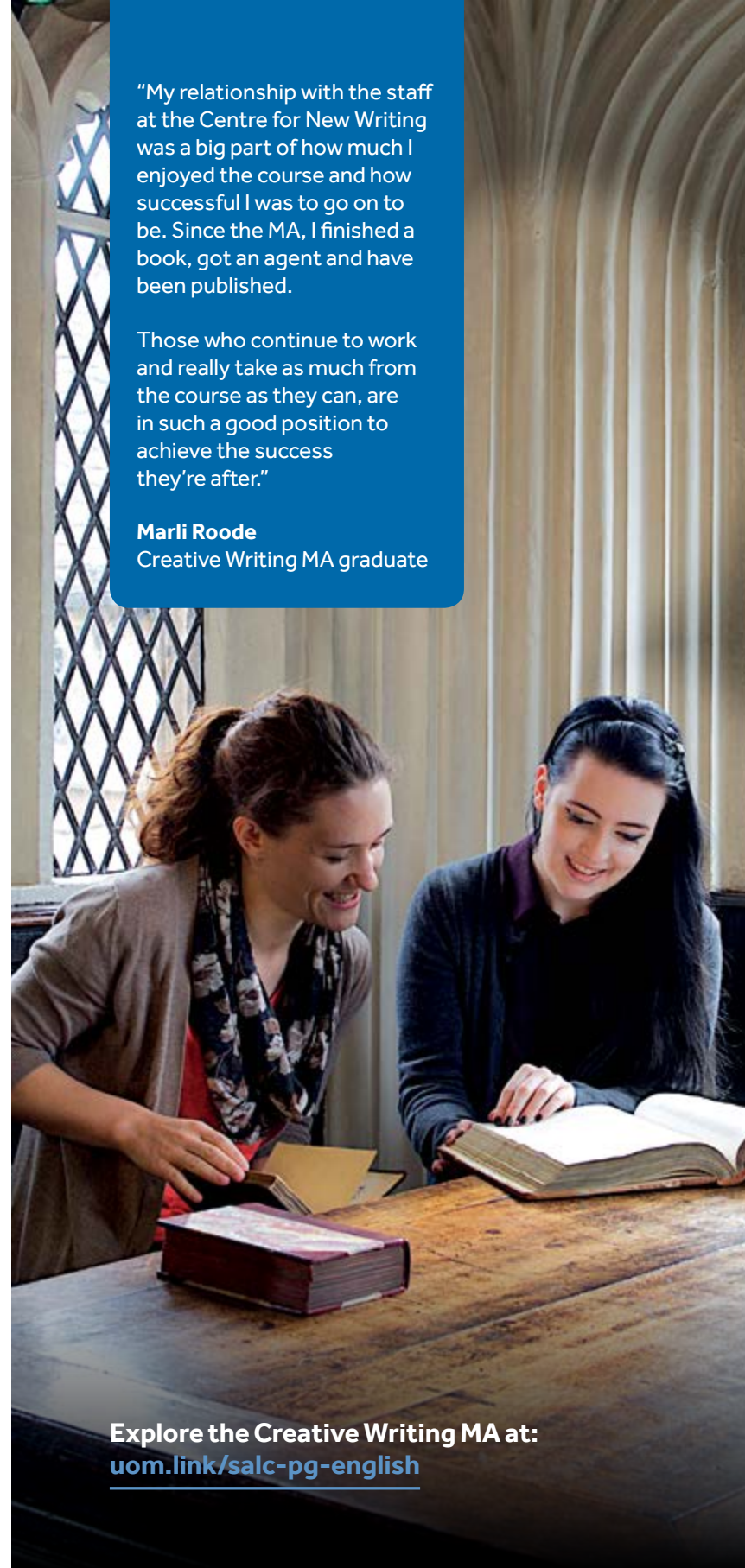
Learn from a distinguished team that includes novelists and essayists Jeanette Winterson CBE, Ian McGuire, Beth Underdown, Horatio Clare, Luke Brown, Honor Gavin and Kamila Shamsie, critic Kaye Mitchell, and poets John McAuliffe, Frances Leviston, Vona Groarke and Michael Schmidt.



Discover the rich literary fabric of Manchester, a UNESCO City of Literature, through our Literature Live reading series and The Complete Works series at HOME, and partners such as Manchester Literature Festival, The Manchester Review and the International Anthony Burgess Foundation.



As an MA student at the Centre for New Writing, you will get the opportunity to have a piece of fiction, non-fiction or poetry published in The Manchester Anthology when you graduate.



Explore the Creative Writing MA at:
uom.link/salc-pg-english

DISASTER MANAGEMENT (RESILIENCE, RESPONSE AND RELIEF) MSc

IN PARTNERSHIP WITH THE HONG KONG POLYTECHNIC UNIVERSITY

Duration: 30 months, part-time (distance learning)

WHERE WILL MY DEGREE TAKE ME?

This course can open up a wide range of career options, such as roles in the civil service, NGOs, academia, research institutes and think tanks.

You could also work at international institutions such as the UN Inter-Agency Standing Committee, Office for Coordination of Humanitarian Affairs, World Bank, World Health Organisation, or regional bodies such as the European Union, African Union, and the Organization of American States.

ABOUT THE COURSE

When disasters strike, they require a quick and coordinated response, creating challenges for rescue and humanitarian workers. There's a demand not only for preparing and equipping responders prior to the disaster event, but also for building the knowledge and skills to mitigate or prevent disasters from occurring.

A community that has both a team with the capacity to prevent or minimise disasters and a ready-to-respond team, can reduce a disaster's impact, in mortality, suffering and economic loss.

Our master's course is consistent with the Sendai Framework for Disaster Risk Reduction (SFDRR) 2015-2030, which emphasises disaster education, including for personnel who have difficulty in attending conventional face-to-face provisions.

You'll learn to conduct theoretical and practical analysis and evaluation to support disaster management and humanitarian action in global health contexts. You'll also have an opportunity to gain hands-on field placement experience to support your future career development.

This course offers flexible, asynchronous online study that enables you to obtain a master's degree without residency and boundary restrictions.

COURSE CONTENT:

This course consists of taught units and a dissertation.

Taught units cover topics including:

- Disaster Preparedness
- Disaster Risk Management
- Emergency Humanitarian Assistance
- Recovery and Rehabilitation in a Disaster
- Community Approaches to Health
- Disaster and Mental Health

There's also an opportunity to take part in an international field trip unit to Sichuan Province in China, Uganda, India or Geneva.

Course units can vary from year to year. Above are examples of the topics planned for 2020.

"I was attracted to this particular course as there's a large focus on the role of public health in natural disasters and epidemics.

Due to the course being delivered jointly by two universities, we get access to a variety of teaching methods such as videos, quizzes and learning resources."

Yumeka Ota
MSc Disaster Management
(Resilience, Response and Relief)



Develop the skills and knowledge required to reduce risk from and prepare for disasters and respond quickly and effectively when they occur.



Study when it suits you thanks to the online nature of the course.



Gain practical skills through optional field trips.



Benefit from the expertise of the Humanitarian and Conflict Response Institute at the University of Manchester and Hong Kong Polytechnic University.

For a full list of course units, and to explore the Disaster Management (Resilience, Response and Relief) MSc, visit:
uom.link/hcri-pg

ENGLISH LITERATURE AND AMERICAN STUDIES MA

Duration: 12 months full-time, 24 months part-time

WHERE WILL MY DEGREE TAKE ME?

Many graduates go on or return to jobs as teachers or librarians, continue their research, or go on to academic jobs. Other career paths are extremely varied, with graduates going into roles within law, publishing, journalism and marketing.

ABOUT THE COURSE

Our MA English and American Studies postgraduate taught course prepares you for further research in the discipline, while also broadening and deepening your critical engagement with English and American literature and culture.

The structure of the course is flexible, which means you can choose to combine your interests in English and American culture, or focus more exclusively on one or the other.

Our department provides a thriving environment, with our vibrant research culture, close links to the Centre for New Writing, involvement in the Manchester Literature Festival and access to the world-class John Rylands Library.

While this course offers you a range of units that are chronologically or geographically specific, all are informed by recent theoretical and historical developments that allow you to think about categories like literature, culture and history in nuanced and fresh ways.

COURSE CONTENT:

This MA consists of taught course units and a dissertation.

Course units cover topics including:

- Space, Place and Text
- The Times of Literature
- American Studies: Theory, Methods, Practice
- Wondrous Transformations: Translating the Medieval Past
- Shakespeare: Theory and the Archive
- Before Sexuality: Bodies, Desires and Discourses 1660-1900
- Revolutionary Poetics 1789-1850
- Radical Subcultures
- The American Body
- Film and Politics in America

Course units vary from year to year. Above are examples of the topics planned for 2020.

"In every seminar, I'm challenged to consider things in ways I've not thought for several years."

The theoretical and critical aspects of the course have not only rejuvenated my passion for critical and cultural theory, but also for reading in general."

Sarah Bolger
English Literature and American Studies MA



Broaden and deepen your critical engagement with English and American literature and its contexts.



Access the exclusive Special Collections of The John Rylands Library, which holds one of the world's largest William Caxton collections, Shakespeare's First Folio and the original archives of Elizabeth Gaskell and Ted Hughes.



Explore a wide range of cultural assets in Manchester, a UNESCO City of Literature.



Attend literary events, including Manchester Literature Festival and our Literature Live reading series, which attracts speakers such as Martin Amis, Seamus Heaney, Hilary Mantel and Audrey Niffenegger.

For a full list of course units, and to explore the English Literature and American Studies MA, visit:
uom.link/salc-pg-english

EGYPTOLOGY MA

Duration: 24 months part-time (online)

WHERE WILL MY DEGREE TAKE ME?

This non-vocational master's degree develops a wealth of transferable skills, and will enable you to exploit a number of career opportunities. The course is designed to prepare you for a career in Egyptology and the heritage sector, or for doctoral study.

ABOUT THE COURSE

This innovative course looks at specific aspects of ancient Egyptian society and culture, and allows you to study the development of the field of Egyptology itself.

You'll have the opportunity to learn applicable skills, such as how to organise museum exhibits, how to apply successfully for research funding and how to publish articles and books at various levels, enabling you to prepare for a career in Egyptology and the heritage sector, or for doctoral study.

The course is delivered entirely online through weekly recorded lectures and interactive discussion boards, which foster a sense of community and encourage discussion between the course tutors and students. You won't be required to physically attend the Manchester campus at any point during your studies, allowing you to adapt your study to existing job or personal commitments.

We use innovative technologies to ensure that your distance learning experience closely mirrors the experience of our on-site students.

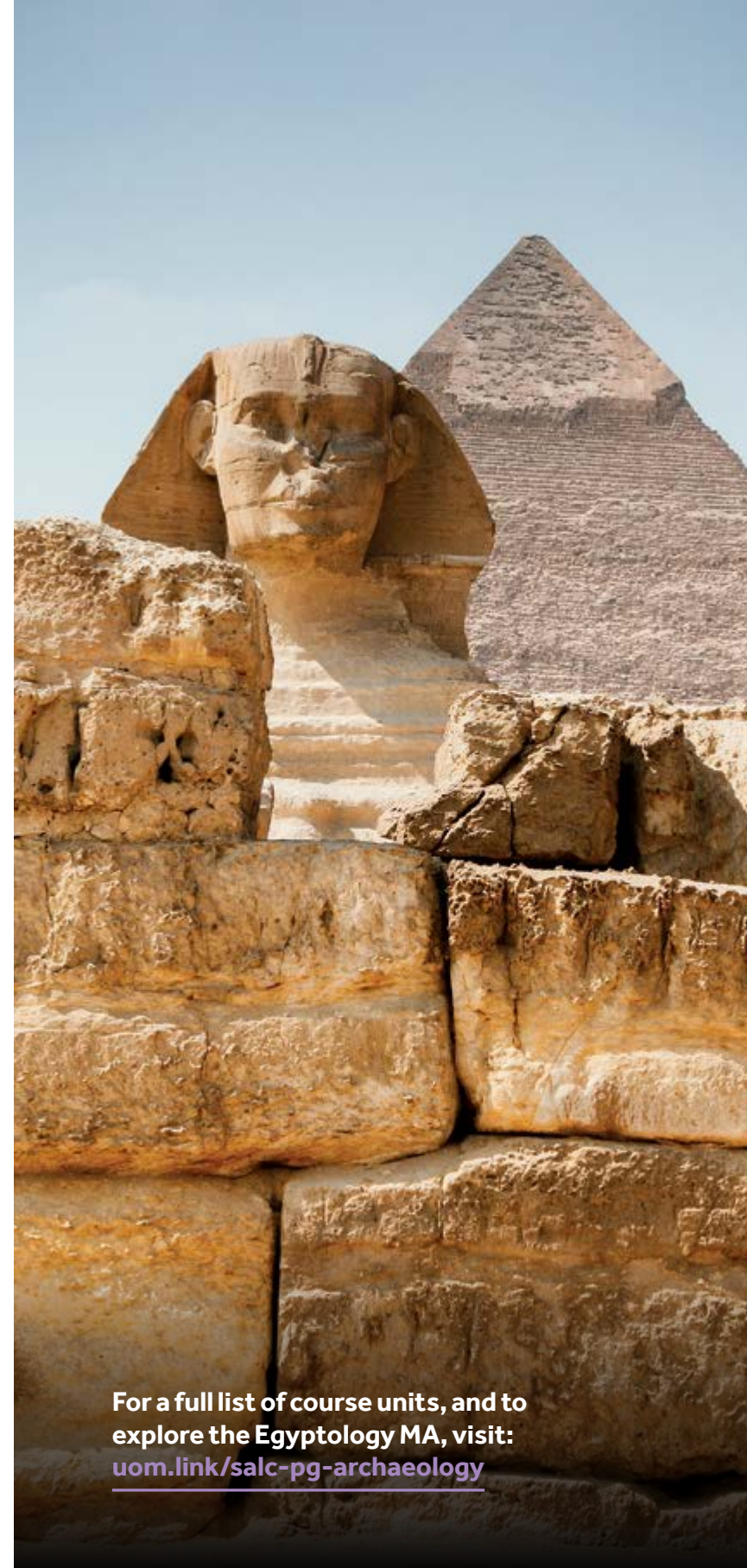
COURSE CONTENT:

This MA consists of taught units and a dissertation.

Taught units cover topics including:

- Historical Studies in Ancient Egypt
- Art in Ancient Egypt
- Urbanism in Ancient Egypt
- Gender and Identity in Pharaonic Egypt
- The Amarna Period
- Middle Egyptian Hieroglyphs
- Ancient Egyptian Religion
- Egyptian language

Course units vary from year to year. Above are examples of the topics planned for 2020.



For a full list of course units, and to explore the Egyptology MA, visit:
uom.link/salc-pg-archaeology



Study on the first online Egyptology master's course in the world.



Advance your understanding of ancient Egyptian society and culture.



Study when it suits you through our online part-time course.



Tailor the course to your own interests through a choice of optional units.



Prepare for a career in the heritage sector or for postgraduate research.

FILM STUDIES MA

Duration: 12 months full-time, 24 months part-time

WHERE WILL MY DEGREE TAKE ME?

By teaching and developing a considerable range of transferable skills, this course opens doors to a wide range of career options.

Previous MA students have gone on to take up PhD study, with many then progressing to academic and teaching careers in further and higher education institutions.

Other graduates have gone on to work for the BBC, independent television production companies and as festival organisers, as well as in film education and other areas of the film and screen media industry.

ABOUT THE COURSE

Our MA Film Studies course has been designed to provide considerable opportunities to study film theory, history and culture, as well as aspects of applied practice.

If you want to enhance your artistic or professional career, or if you're planning to progress to doctoral study, this course is for you. It's also suitable if you're relatively new to the subject area and want to establish a solid foundation.

It provides an excellent springboard for careers in film, screen media and the creative industries, as well as educational, social and community professions.

The strengths of our academics cover film, screen and media studies from form and theory to historical and cultural approaches, and from national cinemas to the politics of identity, gender and sexuality, and film music, as well as film practice.

COURSE CONTENT:

This MA consists of taught units and a dissertation.

Taught units cover topics including:

- Film Theories, Debates and Approaches
- Film Cultures: Research, Industries and Practice
- Adapting Fantastic Texts to Film
- Films about Film
- Queer Cinema
- Documentary filmmaking
- Business strategies for the arts

Course units vary from year to year. Above are examples of the topics planned for 2020.

"My favourite thing about the Film Studies course is the variety of topics on offer. I've been exposed to some amazing cinematic works, as well as fascinating theoretical frameworks week-by-week that not only inspire my existing personal interests, but also introduce me to new ideas.

The chance to do a work placement as part of the course was a particularly exciting prospect; I worked as an Archive Assistant at the North West Film Archive, which I enjoyed immensely."

Charlotte Gough
Film Studies MA



Gain a solid foundation in theoretical and critical film studies.



Have the opportunity to study areas of film theory, history and culture, as well as aspects of applied practice.



Learn from teaching and research-active staff who work in close collaboration with cultural partners including Community Arts Northwest, Contact Theatre, Granada Centre for Visual Anthropology and North West Film Archive.

For a full list of course units, and to explore the Film Studies MA, visit:
uom.link/salc-pg-film

GENDER, SEXUALITY AND CULTURE MA

Duration: 12 months full-time, 24 months part-time

WHERE WILL MY DEGREE TAKE ME?

Whether you're presently employed, are looking for inspiring new career opportunities by furthering your knowledge, are passionate about research, or simply wish to explore a subject you adore in much greater detail, our MA will help you to develop a wealth of transferable skills.

Our graduates have gone on to take up a diverse range of careers in both the public and private sectors. Some have progressed to postgraduate research, and several have taken up jobs as teachers.

ABOUT THE COURSE

Our innovative and highly interdisciplinary MA Gender, Sexuality and Culture master's course is designed specifically for students interested in investigating gender and sexuality within culture.

Our approach is unique within the UK, bringing together scholars who offer options in a range of academic disciplines, including English and American studies, art history and visual cultures, politics, history, modern languages, religions and theology, history of medicine, sociology, social anthropology, as well as others.

In addition, the research culture of The University of Manchester is notably rich for the study of gender and sexuality.

In close consultation with the course directors, you'll opt for a range of MA units drawn from offerings across the humanities and social sciences. You'll also be able to take up training in research methods. This approach allows you greater flexibility and the opportunity to pursue research in new areas.

COURSE CONTENT:

This MA consists of taught units and a dissertation.

Taught units cover topics including:

- Modernism and its Margins
- Queer Cinema and Beyond
- Before 'Sexuality': Bodies, Desires and Discourses, 1660-1900
- Religion and Gender Theory
- Sociology of Consumption
- Protest and Progress: Understanding Movements for Social and Political Change
- Contemporary Fiction

Course units vary from year to year. Above are examples of the topics planned for 2020.



For a full list of course units, and to explore the Gender, Sexuality and Culture MA, visit:
uom.link/salc-pg-gender



Join the UK's first dedicated research facility focusing exclusively on the relationships between sexuality, culture and history.



Discover new approaches to gender and sexuality studies as theoretical, social, cultural, political and historical fields of investigation.



Challenge current understandings of gender and sexuality by interrogating cultural identities, such as queer, heterosexual, homosexual, gay, straight, bisexual and transgendered.



Examine cultural production and theory in relation to other power systems, such as race, ethnicity and class.

GLOBAL HEALTH

Global Health MSc - Duration: 3 years part-time

Global Health PGDip - Duration: 2 years part-time

Global Health PGCert - Duration: 1 year part-time

WHERE WILL MY DEGREE TAKE ME?

This course is aimed at both those new to the humanitarian sector and those already working in the field who wish to develop their academic skills and knowledge.

Your newly acquired knowledge and skills will prepare you for a role in Global Public Health with a focus on application in the real-world field environment of development and humanitarian response as a practitioner, consultant or policy maker with governments or the private sector as well as NGOs.

ABOUT THE COURSE

This course has been created in collaboration with the International Federation of the Red Cross and Red Crescent Societies and is aimed at those new to the humanitarian and development sectors, as well as professionals wishing to increase their skills.

You'll explore issues related to the drive for worldwide improvement in health, the reduction of disparities, and protection against global threats that disregard national borders underpinned by the Sustainable Development Goals.

You'll have access to leading multidisciplinary academics and practitioners, including from our partner, UK-Med - the UK Emergency Medical Team.

The course is unique in bringing together the study of emergency care, disaster management, community health, anthropology and sociology of health in both development and crises in an online format.

You'll be able to engage with the course content and other students via lectures, discussion boards, group work, online chat, question and answer sessions with the tutors, and through peer-to-peer feedback and assessment.

COURSE CONTENT:

This MSc consists of taught units in years one and two, with a dissertation in year three. You can choose to exit the course after year one to receive a PGCert or year two to receive a PGDip.

Taught units cover topics including:

- Community Approaches to Health
- Ethics, Human Rights and Health
- Health Systems and Markets
- Risk, Vulnerability and Resilience
- Diseases and Trauma in Developing Countries
- Management and Leadership in Humanitarianism
- Disaster and Crisis Management
- Research Methods in Global Health

Course units vary from year to year. Above are examples of the topics planned for 2020.

"I can certainly recommend taking this course, as it offers not only in-depth knowledge of global health, but it also helps you develop more general skills such as team work, critical writing, time management, project management, research skills, and online content management."

Suzanne Damman
Global Health



Study the worldwide improvement approaches for health, reduction of disparities and protection against global threats under the umbrella of the Sustainable Development Goals.



Using a Public Health lens, cover topics such as emergency care, disaster management, humanitarian and development ethics, community health, anthropology, and the sociological influence of health and illness.



Benefit from insights from the International Federation of the Red Cross and Red Crescent Societies (IFRC), a collaborator on this course, and develop many of the academic competencies that are sought by the International NGOs.



Study when it suits you through asynchronous, part-time online learning.

For a full list of course units, and to explore the Global Health MSc, visit:
uom.link/hcri-pg

HERITAGE STUDIES

Heritage Studies MA - Duration: 12 months full-time, 24 months part-time

Heritage Studies PGDip - Duration: 9 months full-time, 18 months part-time

WHERE WILL MY DEGREE TAKE ME?

Progression opportunities include work in heritage policy and management roles for national and international organisations, such as the Heritage Lottery, Historic England, the National Trust, and UNESCO.

Other roles within museums and heritage organisations include fundraising and development, research and consultancy, visitor service management, community learning and engagement, collections management and site management.

ABOUT THE COURSE

Our MA Heritage Studies master's course is ideal if you want to develop your knowledge and practical skills to pursue or develop a career in heritage policy, management, conservation, learning, engagement and enterprise.

Heritage Studies examines the theory and practice of heritage making, management and use in local, national and international contexts. It includes both the practical aspects of conservation and management and a study of social, political and economic dynamics in cultural, archaeological, built and natural heritage.

You'll be able to gain intensive work experience and take critical reflective practice within a range of heritage organisations across the region and further afield through our long-standing placement scheme.

Benefit from the expertise of the Institute for Cultural Practices and other specialists in archaeology, art history and history at the School of Arts, Languages and Cultures, and access the University's cultural heritage assets, such as Manchester Museum, the John Rylands Library and Jodrell Bank Discovery Centre.

COURSE CONTENT:

This MA consists of taught units and a dissertation, with options for a work placement and professional practice project.

Taught units cover topics including:

- Heritage policy and management
- Digital heritage
- Curating and engagement
- Natural heritage landscapes
- Historic houses
- Heritage and sustainable development
- Global heritage policy
- Heritage and learning
- Intangible cultural heritage
- Strategic planning and management of heritage projects and enterprises

There's also the potential to take an additional course unit delivered in partnership with other relevant subject areas, subject to availability and approval.

Course units vary from year to year. Above are examples of the topics planned for 2020.

"The support from academic staff has been amazing. The programme's very open to your personalisation and staff have been keen to help me write about the case studies that are close to me.

I've had some incredible opportunities this year. This course has been a fantastic chance to develop my academic and professional skills at the same time, making use of the ways in which the two intertwine."

Sophie Small

Heritage Studies MA - Museum Assistant at Salford Museum and Art Gallery



Develop your skills in and knowledge of heritage policy, management, conservation, learning, engagement and enterprise.



Gain workplace experience through a placement at a heritage site or organisation in north-west England.



Have the opportunity to design and take part in live projects with heritage organisations in Manchester.



Benefit from access to key University assets such as the Manchester Museum, John Rylands Library and Jodrell Bank Discovery Centre.

For a full list of course units, and to explore the Heritage Studies MA, visit:
uom.link/salc-icp

HISTORY MA

Duration: 12 months full time, 24 months part-time

WHERE WILL MY DEGREE TAKE ME?

The high standard of arts research training, both formal and practical, opens doors to many kinds of modern public and private sector graduate careers requiring research skills, formulation of projects and policy documents.

Our work placement scheme provides the opportunity to gain valuable work experience and learn about history in practice in one of our partner institutions in the Manchester area.

Examples include the People's History Museum, Whitworth Art Gallery and the National Football Museum.

ABOUT THE COURSE

Our History master's course enables you to tailor your postgraduate studies to suit your interests. Your focus could be chronological (medieval, early modern or modern), geographical (European, transnational, international) or methodological (cultural or economic and social history).

Alternatively, you can create a wide-ranging course for yourself by choosing units from a variety of areas, including thematic course units that transcend orthodox boundaries to facilitate intellectual breadth and imagination.

You'll have robust theoretical and methodological training, while also developing transferable skills for employment through the work placement, public history and documentary filmmaking units.

As a master's student, you'll become an integral member of the research community with the chance to engage with outstanding researchers, resources and facilities.

COURSE CONTENT:

This course consists of taught units and a dissertation.

Taught units cover topics including:

- The History of Capital
- Medieval and Early Modern Studies
- Modern Britain
- Race, Migration and Humanitarianism
- War, Culture and Conflict
- Mediterranean Empires
- Medieval and Renaissance Studies
- Gender and Sexuality

You may also select units from elsewhere in the University with permission.

Course units vary from year to year. Above are examples of the topics planned for 2020. Students applying for this MA are eligible to apply for AHRC and ESRC funding. See page 20 for details.



For a full list of course units, and to explore the History MA, visit:
uom.link/salc-pg-history



Study at one of the UK's leading History departments, with unparalleled choice and flexibility.



Benefit from access to extensive and excellent material research resources.



Study in Manchester, a living history book – from Peterloo and the anti-slavery movement, to Roman forts and medieval monuments.



The University of Manchester and John Rylands Libraries offer immense holdings of printed primary medieval sources and extensive holdings for early modernists.

HUMANITARIAN PRACTICE

Humanitarian Practice MSc - Duration: Up to 60 months (distance learning)

Humanitarian Practice PGDip - Duration: Up to 36 months (distance learning)

Humanitarian Practice PGCert - Duration: Up to 24 months (distance learning)

WHERE WILL MY DEGREE TAKE ME?

This MSc is part of the Leadership Education Academic Partnership (LEAP) programme, a higher education programme designed for humanitarian practitioners from around the world.

As such, you're already likely to be working as a humanitarian practitioner, and looking to advance your interdisciplinary knowledge to meet changing operational needs and enhance your career prospects through development or leadership and management skills.

ABOUT THE COURSE

The Humanitarian Practice master's course covers key concepts in humanitarian practice and investigates agents of change. You'll learn across traditional subject boundaries to enable you to reflect critically on issues arising from your own work, the wider humanitarian agenda and develop the skill set needed in contemporary humanitarian practice.

This blended course is run via distance learning, enabling you to continue to meet work commitments in the humanitarian sector while studying. It's delivered jointly by the Humanitarian and Conflict Response Institute (HCRI) at The University of Manchester and the Liverpool School of Tropical Medicine (LSTM) in partnership with Médecins Sans Frontières (MSF).

You'll benefit from collaborative working with the disciplines of epidemiology, history, politics, anthropology, development studies, international relations, public health, management and humanitarian medicine, as well as the expertise of academics and leading practitioners.

COURSE CONTENT:

This course consists of taught units and a dissertation.

Taught units cover topics including:

- History of Humanitarian Aid
- Critical Approaches to Evidence
- Research into Practice
- Critical Approaches to Management of Humanitarian Operations
- Emergency Humanitarian Assistance

Course units vary from year to year. Above are examples of the topics planned for 2020.

"I would really recommend the LEAP programme to anybody that wants to open up their mind."

The main thing it's provided, is the opportunity to step outside of your own work bubble, and look around to see what else is out there in terms of knowledge, research and the way you look at things."

Maaïke Heersevoort
Humanitarian Practice MSc
Project Coordinator at Médecins
Sans Frontières (MSF)



Critically reflect on your work and gain the relevant academic background to inform decisions made in humanitarian practice.



Enhance your skills and knowledge, enabling you to better meet the needs of the populations you serve.



Study on a programme designed in partnership with Médecins Sans Frontières (MSF) to respond to the needs of humanitarian organisations.



Strengthen your leadership skills, helping you to grow into a management or coordination position within a humanitarian organisation.



For a full list of course units, and to explore the Humanitarian Practice MSc, visit:
uom.link/hcri-pg

HUMANITARIANISM AND CONFLICT RESPONSE MA

Duration: 12 months full-time, 24 months part-time

WHERE WILL MY DEGREE TAKE ME?

You may already have work experience and will be able to harness the knowledge gained from your course to progress within your field of expertise, reaching senior roles in government and non-governmental organisations.

Or, you can use the course as a starting point to progress into careers within NGOs, HR consultancies, financial institutions, academic institutions and more.

ABOUT THE COURSE

This multidisciplinary course focuses on response to crises originating from both conflict-zones and natural disasters.

Bringing together the study of medicine and humanities, the course gives you an inclusive approach that mirrors the reality of aid operations and informs the reflexive processes of both analytical and applied disciplines.

You'll study at the Humanitarian and Conflict Response Institute (HCRI) at The University of Manchester, which is widely recognised as a leading international research institute focusing on the study of humanitarianism, conflict response and peacebuilding.

Our work is driven by a desire to inform and support policy and decision makers, to optimise joint working between partner organisations, and to foster increased understanding and debate within the field.

You'll benefit from being able to draw on an exceptionally wide breadth of disciplinary traditions and research expertise at the Institute and beyond.

COURSE CONTENT:

This course consists of taught units and a dissertation.

Taught units cover topics including:

- Reconstruction and Development
- Conflict Analysis
- Border-Crossings: Comparative Cultures of Diaspora
- Humanitarianism and displacement: Researching the legacies of war
- Anthropology of Violence and Reconstruction
- Global Health and Food Insecurity
- Mental Health and Psychosocial Support in Humanitarian Crises
- Disaster Governance

Course units vary from year to year. Above are examples of the topics planned for 2020.

"The speaker's series where experts from the field come and give talks to the students has been very insightful, as you get to hear first-hand experiences for those currently employed in this sector.

These talks, as well as lectures, have highlighted the challenges that can come with this type of career, but that it can also be very rewarding."

Lucy Hiley
Humanitarianism and Conflict Response MA



Learn from some of the most renowned names in the field of humanitarian research.



Receive a thorough grounding in both the practical and theoretical aspects of humanitarian issues.



Take part in an optional research trip to Uganda, where you will understand more about careers in humanitarian work and add significant experience to your CV.



Engage first-hand with the people, projects and organisations that shape humanitarian, global health, disaster management, conflict response and intervention issues around the world.

For a full list of course units, and to explore the Humanitarian and Conflict Response MA, visit:
uom.link/hcri-pg

INTERCULTURAL COMMUNICATION MA

Duration: 12 months full-time, 24 months part-time

WHERE WILL MY DEGREE TAKE ME?

This course will enhance your opportunities to gain employment in fields where intercultural competence is valued, for example, many multinational companies and organisations, international projects and NGOs, and multicultural and immigrant communities.

ABOUT THE COURSE

The global era has stimulated transnational cultural flows of people, practices and products, and local cultural complexities that were inconceivable even a generation ago.

Nowadays, it's necessary to function effectively in culturally-diverse contexts ranging from organisations and workplaces, to neighbourhoods and cities, and to societies and regions.

As a consequence, intercultural awareness and communication skills are an advantage in many areas of employment.

Our Intercultural Communication master's course brings together a wide range of expertise to explore the cultural complexities and diversity of our current times from a variety of conceptual, disciplinary and professional perspectives.

COURSE CONTENT:

This course consists of taught units and a dissertation.

Taught units cover topics including:

- Migration
- Memory
- Media
- Translation
- Language contact
- English as a global language
- Communicative interaction
- Intercultural relations
- Intercultural competence

It's also possible to study a foreign language and there's a placement option that will give you the opportunity to work in community organisations.

Course units vary from year to year. Above are examples of the topics planned for 2020.



Study in a vibrant multicultural and multilingual city, where you can put what you learn into practice.



Benefit from cutting-edge approaches to the study of intercultural awareness and communication skills.



Explore the cultural complexities and diversity of our current times.



For a full list of course units, and to explore the Intercultural Communication MA, visit:
uom.link/salc-translation

INTERNATIONAL DISASTER MANAGEMENT MSc

Duration: 12 months full-time, 24 months part-time

WHERE WILL MY DEGREE TAKE ME?

Many graduates join the Civil Service, working within various government ministries, including the foreign office, international development office and local resilience forums.

Others work for international institutions such as the UN Peacebuilding Commission, Department of Peacekeeping Operations and regional bodies such as the European Union, African Union and the Organization of American States, as well as local and international NGOs.

Lots of our graduates also move into research in academia, research institutes or think-tanks.

ABOUT THE COURSE

From wildfire, species extinction and terrorism; to hurricanes, flooding, warfare and financial turbulence, our world and its inhabitants experience various types of disaster, crisis and emergency events on a disconcertedly frequent basis.

How might we get to grips with the causes underpinning these events? What ramifications do these events, both as singular occurrences and as a broader collective condition, bear politically and economically? How do they affect ways of life and culture? What modes of governance technologies and strategies of intervention have risen to the fore in seeking to secure an increasingly insecure world? And how might we acquire a knowledge base that will provide a toolkit of effective responses to these globally challenging problems?

By studying at Manchester's leading Humanitarian and Conflict Response Institute (HCRI), you'll explore the answers to these questions through critical analysis of current trends in academic research and policy from across the world; particularly those related to security, global governance, international disaster risk reduction, sustainable development, and humanitarian action tools commonly used by disaster management professionals.

COURSE CONTENT:

This course consists of taught units and a dissertation.

Taught units cover topics including but not limited to:

- Disaster governance
- International security
- Sustainable development
- Humanitarian action
- Critical Geographic Information Systems (GIS)
- Security, emergencies and technologies of control
- Reconstruction and development
- Climate change, disaster and responses
- Designing relief projects
- Armed groups and humanitarian aid

Course units vary from year to year. Above are examples of the topics planned for 2020.

"I most enjoyed the wealth of knowledge and encouragement that each and every member of the HCRI's academic staff was willing to share with their students. They pushed me to do my best, and they were by my side every step of the way."

Alexandra Mateer
International Disaster Management MSc



Develop skills and knowledge to critically analyse and apply key concepts in disaster management theory, research, policy and practice, including vulnerability, resilience, governance, disaster risk reduction and sustainable development.



Learn from an interdisciplinary team, drawing on concepts and methods stemming from geography, history, politics, development studies, the arts and medicine.



Develop the knowledge, skills and competencies required for leadership in careers related to disaster management and governance.



Benefit from opportunities to engage first-hand with the people, projects and organisations that shape humanitarian, global health, disaster management, conflict response and intervention issues around the world.

For a full list of course units, and to explore the International Disaster Management MSc, visit:
uom.link/hcri-pg

LINGUISTICS MA

Duration: 12 months full-time, 24 months part-time

WHERE WILL MY DEGREE TAKE ME?

Studying Linguistics will equip you with a range of sought-after transferable skills, including written and oral communication skills, computing skills, intercultural awareness and research methods.

This course will also develop skills that will be useful for postgraduate research.

Career destinations for our graduates include language teaching, language policy, speech and language therapy, publishing and communications.

ABOUT THE COURSE

This is a flexible programme that aims to explore the breadth and depth of linguistics. It builds on the very wide range of teaching and research expertise present in the Department of Linguistics and English Language, covering all aspects of theoretical and descriptive linguistics, including:

- Phonetics
- Phonology
- Morphology
- Syntax
- Semantics
- Pragmatics
- Discourse and conversation analysis
- Typology
- Historical linguistics
- Sociolinguistics
- Cognitive linguistics and psycholinguistics
- Computational and corpus linguistics
- Field linguistics
- The documentation and description of endangered languages.

Our internationally-recognised expertise encompasses a breadth of languages, including English and other Germanic languages, Romance languages, Russian, Polish, Arabic, Hebrew, Turkish, Kurdish and other Iranian languages, Amerindian languages, languages of South Asia, indigenous languages of Australia and historical languages such as Old English, Old Saxon and Old Norse.

COURSE CONTENT:

This course consists of taught units and a dissertation.

Taught units cover topics including:

- Grammatical Theory
- Phonetics and Phonology
- Semantics and Pragmatics
- The Sociolinguistics of English
- Psycholinguistics
- Forensic Linguistics
- Sociolinguistics
- The syntax-semantics interface
- Typology
- Societal multilingualism

One or two units may also be taken from a list of course units available in other subject areas.

Course units vary from year to year. Above are examples of the topics planned for 2020.

"My MA at Manchester was a challenging but very enjoyable and valuable experience that gave me the opportunity to work with enthusiastic and inspiring staff."

I've developed skills that have proved useful in my current role as research assistant at the University's Multilingual Manchester project, and the master's experience has helped me prepare for a PhD in Linguistics."

Leonie Gaiser
Linguistics MA



Gain a thorough grounding in the full breadth and depth of linguistic theory.



Access innovative resources, including psycholinguistics and phonetics laboratories with facilities for signal analysis, speech synthesis, laryngography and electropalatography.



Build the necessary intellectual skills to plan and carry out independent research.

For a full list of course units, and to explore the Linguistics MA, visit:
uom.link/salc-pg-linguistics

MEDIEVAL AND EARLY MODERN STUDIES MA

Duration: 12 months full-time, 24 months part-time

WHERE WILL MY DEGREE TAKE ME?

This is an interdisciplinary course designed to equip you with the critical skills and tools necessary for research in the history, literatures and art of the Middle Ages and Early Modern periods.

Many of these theoretical and methodological skills are highly transferable, making our graduates popular with a wide range of employers.

Working closely with the collections of the John Rylands Library makes our course particularly suitable if you're considering a future in heritage management, library, archive, or museum work, art business, or education.

ABOUT THE COURSE

Research in this area has a long and distinguished history at The University of Manchester and we have a lively culture, thanks to the support of the Centre for Medieval and Early Modern Studies (CMEMS); which holds regular talks, seminars and conferences, in addition to taught courses.

Pursue your interest in the literatures, histories and cultures of the European Middle Ages and Early Modern periods.

You'll also be able to draw on the expertise of scholars engaged in research at the John Rylands Research Institute, where the course is based. The John Rylands Library houses exceptional medieval and early-modern treasures and offers many exciting research and study opportunities.

Two pathways are available for students who wish to extend their knowledge in a particular chronological direction: Medieval, and Early Modern.

COURSE CONTENT:

This course consists of taught units, research training units and a dissertation.

Taught units cover topics including:

- From Papyrus to Print:
The History of the Book
- Reading the Middle Ages and Early Modern period: Palaeography, Codicology and Sources
- Perspectives in Medieval and Early Modern Studies
- Women and Art in Italy 1280-1530
- Wonders, Miracles & Supernatural Landscapes in Medieval & Early Modern Europe
- Jews among Christians and Muslims
- Shakespeare: Theory and the Archive
- Latin or Old English

You may take a placement with a cultural partner (museum or gallery) instead of a taught module, with appropriate permission.

Course units vary from year to year. Above are examples of the topics planned for 2020.

"My favourite part of the course has been the chance to work with medieval manuscripts in the John Rylands Library. We've been able to handle manuscripts ranging from ninth century Ottonian Bibles and 13th century Italian copies of classical law books to beautifully illuminated Humanist manuscripts.

I think the MA has been an excellent course for preparing me to do a PhD in medieval history. I've significantly improved my ability to express my ideas to a wide audience both in writing and orally, because of regular assessments and constructive feedback."

Tom Quigley
Medieval and Early Modern Studies MA



Pursue your interest in the literatures, histories and cultures of the European Middle Ages and Early Modern periods.



As a member of the University's Centre for Medieval and Early Modern Studies, benefit from our lively research culture, with talks, seminars and conferences that you will be able to attend alongside your taught courses.



Enjoy unparalleled access to the expert staff and Special Collections of The John Rylands Library and the John Rylands Research Institute.

For a full list of course units, and to explore the Medieval and Early Modern Studies MA, visit:
uom.link/salc-pg-history

MODERN AND CONTEMPORARY LITERATURE MA

Duration: 12 months full-time, 24 months part-time

WHERE WILL MY DEGREE TAKE ME?

On completion of this course, many of our postgraduates continue their research to develop careers in academia.

However, career paths overall are extremely varied and skills are transferable. The high standard of arts research training, both formal and practical, opens doors to many kinds of public and private sector graduate careers requiring research skills and the formulation of projects and policy documents.

ABOUT THE COURSE

Our MA Modern and Contemporary Literature master's course offers an opportunity to become part of an exciting, intellectual group of researchers working in 20th and 21st century literature, culture and theory.

You'll undertake an intensive and challenging investigation of the literatures in this period, as well as units that introduce you to leading research in the broad field of modern and contemporary writing.

We focus theoretically on the relationships between texts and the various contexts in which they're produced and in which they circulate.

Through detailed engagements with the minutiae of aesthetic form, we consider the connections between aesthetic and political practice, with particular focus on representations and constructions of sexuality, class, gender and race.

COURSE CONTENT:

This course consists of taught units and a dissertation.

Taught units cover topics including:

- Modernism and its margins
- Postcolonial writing
- Radical subcultures
- American culture
- Contemporary fiction

You may also choose one or two units from another MA course, subject to the approval of the Programme Director.

Course units vary from year to year. Above are examples of the topics planned for 2020.



For a full list of course units, and to explore the Modern and Contemporary Literature MA, visit:
uom.link/salc-pg-english



Study post-1900 literature in all its geographical, formal and thematic complexity and diversity.



Explore a variety of critical and theoretical approaches to modern and contemporary writing.



Become part of a community of active researchers working in the fields of contemporary writing, creative writing, modernism studies and postcolonial studies.



Discover the literary heritage, cultural assets and arts events of Manchester, a UNESCO City of Literature.



Take advantage of the prestigious Centre for New Writing at The University of Manchester, home to award-winning teaching staff including Kamila Shamsie and Jeanette Winterson.

MODERN LANGUAGES AND CULTURES MA

Duration: 12 months full-time, 24 months part-time

WHERE WILL MY DEGREE TAKE ME?

Our alumni have gone on to pursue successful careers in the arts and cultural sectors, and beyond, in professions including marketing, journalism, publishing, business, politics, finance and education.

The MA provides a thorough training in the expertise needed for further research, and many graduates have gone on to postgraduate research degrees and careers within academia.

ABOUT THE COURSE

Our MA Modern Languages and Cultures course will prepare you for further research in constituent disciplines, but it's also relevant if you wish to broaden and deepen your critical engagement with a wide range of languages and cultures.

The structure of the MA is flexible, which means that you can choose to combine your interests in different languages or cultures, or focus more exclusively on one particular area.

Modern Languages at The University of Manchester is a thriving environment, with its vibrant research culture, University Language Centre facilities, its close links to a wide range of cultural partners across the city and its access to the world-class John Rylands Research Institute.

Our range of appealing units are chronologically or geographically specific, but all course units are informed by recent theoretical and historical developments that allow you to think about categories like 'language' and 'culture' in nuanced and fresh ways.

COURSE CONTENT:

This course consists of taught units, including research methods, and a dissertation.

A wide range of taught units are available, from the fields of:

- Arabic and Middle Eastern Studies
- Chinese
- French Studies
- German Studies
- Italian Studies
- Japanese Studies
- Russian and East European Studies
- Spanish, Portuguese and Latin American Studies

You may also choose one or two units from another MA course, subject to the approval of the Programme Director.

Course units vary from year to year. Above are examples of the topics planned for 2020.



Broaden and deepen your critical engagement with modern languages, cultures and their contexts.



Access a wealth of cutting-edge critical thinking, as well as links with cultural partners, including Alliance Française and Instituto Cervantes.



Become an independent researcher, critical and creative thinker and persuasive writer.



Benefit from the cultural diversity of Manchester, western Europe's most multilingual city.



For a full list of course units, and to explore the Modern Languages and Cultures MA, visit:
uom.link/salc-pg-languages

MUSIC (ETHNOMUSICOLOGY) MusM

Duration: 12 months full-time, 24 months part-time

WHERE WILL MY DEGREE TAKE ME?

Our graduates have pursued successful careers in musical and non-musical fields. Some continue to further study via a PhD before securing an academic position. Some go on to teach in schools or further education, both in the UK and overseas.

Other areas of work for which advanced musical training has been directly relevant include arts management and the culture industries, music publishing, music, journalism, librarianship, music therapy and performance.

Careers outside of music include accountancy, law, social work and human resources.

ABOUT THE COURSE

Our MusM Music (Ethnomusicology) course offers a solid master's level foundation in ethnomusicology. With a strong focus on theory, methodology and current debates in the discipline, together with appropriate research techniques and presentational styles, it offers excellent preparation for doctoral study and also for applied work.

Seminars allow for close collaboration between lecturers and students, with ample opportunity for you to present your own work and receive individual feedback. Discussion and debate forms an important part of most course units.

COURSE CONTENT:

This course consists of taught units and a dissertation.

Taught units encompass a wide range of topics and approaches, including:

- Gender and ethnicity
- Music and conflict
- Music revivals and performance culture
- Postcolonial theory
- Politics of ethnography

Course units vary from year to year. Above are examples of the topics planned for 2020.

You can also choose to take a placement unit with an arts and cultural organisation, business or service provider to gain valuable workplace experience. The placement may take the form of an investigation of a specific business idea, development strategy or management proposition to resolve a problem or particular issue, and will result in a placement report, proposal or essay.

"It was brilliant to develop ideas alongside people who were also passionate about stretching the boundaries of musical understanding."

Eleanor Sherwood
MusM Music
(Ethnomusicology) Graduate



Enjoy a strong focus on theory, methodology and current debates in ethnomusicology and world music studies.



Develop advanced research skills and presentational techniques suitable for doctoral study or applied work.



Study in a city that is home to more professional music-making than any UK city outside of London, with three orchestras and internationally recognised institutions such as the BBC and Opera North.



We are the #1 ranked Music department in the UK, according to the Sunday Times Good University Guide 2020.

For a full list of course units, and to explore the Music (Ethnomusicology) MusM, visit:
uom.link/salc-pg-music

MUSIC

(MUSICOLOGY) MusM

Duration: 12 months full-time, 24 months part-time

WHERE WILL MY DEGREE TAKE ME?

Our graduates have pursued successful careers in musical and non-musical fields. Some continue to further study via a PhD before securing an academic position, while others go on to teach in schools or further education, both in the UK and overseas.

Other areas of work for which advanced musical training has been directly relevant include: arts management and the culture industries, music publishing, music journalism, librarianship, music therapy and performance.

Careers outside of music have included accountancy, law, social work and human resources.

ABOUT THE COURSE

Our MusM Music (Musicology) course offers a solid master's-level foundation in musicology. With a strong focus on theory, methodology and current debates in the discipline, together with appropriate research techniques and presentational styles, it offers excellent preparation for doctoral study and also for applied work.

Seminars allow for close collaboration between lecturers and students, with ample opportunity for you to present your own work and receive individual feedback. Discussion and debate forms an important part of most course units.

COURSE CONTENT:

This course consists of taught units and a dissertation.

Taught units encompass a wide range of topics and approaches, including:

- Musicology as cultural history
- Musicology and the body
- Source studies and performance practice
- Postcolonial theory and postmodernism

Course units vary from year to year. Above are examples of the topics planned for 2020.

You can also choose to take a placement unit with an arts and cultural organisation, business or service provider to gain valuable workplace experience.



Enjoy a strong focus on theory, methodology and current debates in musicology.



Develop advanced research skills and presentational techniques suitable for doctoral study or applied work.



Study in a city that is home to more professional music-making than any UK city outside of London, with three professional orchestras and internationally recognised institutions such as the BBC and Opera North.



We are the #1 ranked Music department in the UK, according to the Sunday Times Good University Guide 2020.

For a full list of course units, and to explore the Music (Musicology) MusM, visit:
uom.link/salc-pg-music

PLAYWRITING MA

Duration: 12 months full-time

WHERE WILL MY DEGREE TAKE ME?

We will prepare you for a successful career in playwriting and writing for performance, and you'll have access to individual career guidance and training to help you secure work.

The industry focus of the programme ensures that you will be equipped with the practical knowledge to manage your career as a writer, and the ability to pitch your own initiatives, as well as work both as an individual writer and collaboratively with others.

Additional possible career paths include work as literary officers and agents, and within publishing, art journalism, dramaturgy and producing.

ABOUT THE COURSE

Our MA Playwriting course is an intensive one-year programme designed to provide a genuine gateway into a writing career in the theatre and performance industries.

You'll work with leading industry practitioners to develop your playwriting, pitching and dramaturgical skills. You will learn about and develop skills in writing for performance across a diverse range of contexts, genres and themes.

By the end of the course, you'll have developed at least one full-length stage play, a collection of one-act dramas, and a full-length play for a festival context.

You'll have access to individual career guidance and training in how to navigate entry-level writing work in the theatre and performance industries. The course features regular speakers from the industry, including returning alumni who have established successful careers as writers, dramaturgs and producers.

COURSE CONTENT:

This is a hands-on course, involving four taught units and a dissertation.

Taught units, assessed by plays and reflective pieces, include:

- Playwriting and form
- Playwriting and structure
- The festival play
- The working playwright

Course units vary from year to year. Above are examples of the topics planned for 2020.



For a full list of course units, and to explore the Playwriting MA, visit:
uom.link/salc-pg-drama



Work with active leading playwrights Anders Lustgarten, Chloe Moss and Tim Price, as well as attending seminars with Jeanette Winterson and mentoring by Vicky Featherstone.



Develop skills in writing for performance across a diverse range of contexts, genres and themes.



Benefit from the dynamic theatre scene in Manchester and our partnerships with major institutions Royal Exchange, Contact and HOME.



The Martin Harris Centre for Music and Drama boasts state-of-the-art equipment and facilities, including the John Thaw Studio Theatre, the Cosmo Rodewald Concert Hall, and the specialist subject collections of the Lenagan Library.



The Centre for New Writing has a strong track record of creative writing, and we have one of the leading Drama departments in the UK.

RELIGIONS AND THEOLOGY MA

Duration: 12 months full-time, 24 months part-time

WHERE WILL MY DEGREE TAKE ME?

Many graduates work in museums, libraries and other archives that require textual and historical research skills.

Some students go into careers in the media researching angles of events that relate to religions, or in the health service investigating the experiences of various cultural groups.

For others, our master's course acts as a gateway for a career in academia, or as a professional in a field such as public service or the voluntary sector.

For those of you who are existing professionals in teaching, religious ministry or other areas, our course brings a new level of expertise and confidence to your work.

ABOUT THE COURSE

Study with us and enjoy access to research strengths and specialist teaching across a breadth of areas in religions and theology, including: biblical studies; Jewish studies; Christian (including political) theology; Islamic philosophy in cooperation with the department of Arabic and Middle Eastern Studies; continental philosophy and social ethics.

You'll explore religion and theology in their historical, contemporary and political contexts, uncovering how they continue to influence the world in which we live today, and determining your own study pathway throughout.

You'll learn about the impact of religion and theology on human behaviour, looking at local, national and international perspectives.

We'll also encourage you to investigate and interrogate assumptions through stimulating debates and discussions that take into account a breadth of social and cultural backgrounds.

You'll also have the opportunity to take advantage of specialist teaching, including ancient and modern languages such as Biblical Greek, Biblical and modern Hebrew, Latin, and Arabic.

COURSE CONTENT:

This course consists of taught units and a dissertation.

Six dedicated MA course units in religions and theology cover a broad menu of religious, theological and philosophical texts, traditions and issues.

Topics typically available are:

- Christian theology and politics
- Ethnic minorities and religious identities
- Bible and early Jewish texts
- Relations between Jews, Christians and Muslims
- New Testament in the Roman Empire
- Philosophy of moral decision-making

You can tailor your degree to suit your interests, and have access to most of the units within other arts, languages and cultures master's courses at Manchester. We work particularly closely with our colleagues within Archaeology and Classics and Ancient History.

Course units vary from year to year. Above are examples of the topics planned for 2020.



Take advantage of specialist teaching, including ancient and modern languages such as Biblical Greek, Biblical and modern Hebrew, Latin, and Arabic.



Enjoy exclusive access to world-class resources for research, including the archives of The John Rylands Library - home to Biblical and Jewish papyri, anti-slavery collections and the Methodist and Christian Brethren archive.



Become part of internationally-recognised research centres, including the Centre for Jewish Studies, the Centre for Biblical Studies and the Lincoln Theological Institute.



Benefit from having the vibrant, multi-faith city of Manchester on your doorstep.

For a full list of course units, and to explore the Religions and Theology MA, visit:
uom.link/salc-pg-religions

SCREENWRITING MA

Duration: 12 months full-time

WHERE WILL MY DEGREE TAKE ME?

This course is designed to present a genuine gateway into the film and television industries.

Some graduates work as professional screenwriters, while others may take up other, related, positions in film and TV.

We offer talks from professionals in the industry and hands-on internship programmes to help you get an insight into what it's really like to work in the industry.

ABOUT THE COURSE

The only course of its kind offered by a Russell Group university, this MA will professionalise your writing, and present a genuine gateway into the film and television industries.

You'll have the chance to gain hands-on industry experience through structured internship programmes with leading production companies, which have included Film4 (Room, Ex Machina, The Lobster), Wildgaze (Brooklyn), Number 9 Films (Carol), Left Bank (The Crown), Warp (This is England), Red Productions (Happy Valley, Scott and Bailey), and Hammer Films (The Woman in Black, Let Me In).

We work closely with leading industry practitioners to develop your screenwriting, pitching and story-breaking skills. By the end of the course, you'll have developed a feature film screenplay, a pilot TV episode, readers reports, adapted scenes, and two short films.

You'll study story design, visual story-telling and character arcs in both long-running television series and feature films, and develop the tools to be able to analyse and critique screenwriting craft, as well as learn how to disseminate your own work.

COURSE CONTENT:

Course units include:

- Industry and Feature film
- Story and the Journey of Change
- The Calling Card Script and Television
- Genre and Theme

Course units vary from year to year. Above are examples of the topics planned for 2020.

Throughout the course, you will attend weekly writing workshops to study the very best of contemporary screenwriting, including shows such as *Breaking Bad*, *True Detective*, *The Killing*, *Broadchurch*, *This is England*, *Rev*, *Transparency* and *The Sopranos*.

You'll also cover British and American examples of charismatic film screenwriting, from *Goodfellas* to *The King's Speech* via *Alien*.

Each summer, we offer students a two week 'hands-on' industry placement at a renowned film or TV production company in either London or the north-west.



Study on an intensive year-long course with a combination of workshops, seminars and one-to-one teaching.



Gain hands-on industry experience with an internship at a leading production company.



Work with industry experts to develop your portfolio and hone the practical skills you need to succeed in UK film and television.

Explore the Screenwriting MA at:
uom.link/salc-pg-english

TRANSLATION AND INTERPRETING STUDIES

MA - Duration: 12 months full-time, 24 months part-time

PGDip - Duration: 9 months full-time

WHERE WILL MY DEGREE TAKE ME?

Many of our graduates begin careers in translation and interpreting, while others pursue roles in international business and marketing, film production and distribution, and publishing. Some graduates also pursue careers in academia.

Graduates have found employment at UN agencies, internationally-minded cultural organisations, translation agencies in the UK and abroad, industry, and universities in the UK and around the world.

ABOUT THE COURSE

Our MA Translation and Interpreting Studies master's course aims to equip you with the knowledge and skills you'll need for a career in translation, or in other professions that require expertise in communication between languages and cultures.

We provide specialist training in translation for a variety of different settings and of a wide range of different types of texts, as well as interpreting in business and public service contexts. We support translation study in any language pair into or out of English (interpreting course unit options are slightly more limited).

Course units move you towards the world of work through practical, real-life translation and interpreting tasks, as well as providing the skills to prepare you for future study or research.

COURSE CONTENT:

This course consists of taught units and a dissertation.

Taught units cover topics including:

- Commercial translation
- Audiovisual translation
- Scientific and technical translation
- Literary translation
- Translation project management
- Translating for international organisations
- Translating into or out of English and any other language
- Dialogue interpreting for business
- Public service interpreting

The programme also offers research training and preparation for those who wish to prepare for doctoral study in translation or interpreting studies.

Course units vary from year to year. Some topics may not be available in some years.

"The course will definitely enhance my career prospects as a translator. It's taught me to refine my time management and organisation skills and really strengthen my research skills."

Other employability skills I've developed as a result of this course are my writing and communication skills, flexibility, adaptability, self-reliance and self-confidence."

Megan Smith
Translation and Interpreting Studies MA



Choose from a wide range of specialised optional units, such as audiovisual translation; commercial translation and translation for international organisations.



Train in the latest translation technologies, including translation memory, terminology management and machine translation.



Develop your interpreting skills to work in business and public service settings – in selected language combinations.



For a full list of course units, and to explore the Translation and Interpreting Studies MA, visit:

uom.link/salc-translation

YOUR PATH TO PhD

Join our cross-disciplinary postgraduate community, work on world-leading research into human cultures, languages, beliefs and institutions, and together, we can make a difference.

At the School of Arts, Languages and Cultures, you'll benefit from our extensive work with partner organisations, including government bodies and registered charities, which make sure our research programmes have real and immediate impact on the ground.

- 97% of the School's research environment is considered to be world-leading (4*) or internationally excellent (3*) in the last Research Excellence Framework (REF 2014)
- 80% of research activity in the School of Arts, Languages and Cultures was judged as 'world leading' (4*) or 'internationally excellent' (3*) (REF 2014)



Browse our full list of research programmes:
uom.link/salc-phds



"Having studied my master's degree here at Manchester, facilities such as the archive collections at The John Rylands Library contributed to my decision to continue my studies. The academic staff have always been the key attraction for me, and they've helped me develop as a researcher over the last ten years.

For those who wish to continue to postgraduate research, I would highly recommend it. I advise you to thoroughly research the courses and supervisors available to you. Also, explore all funding options"

Helen Kilburn
English and American Studies PhD

Chat to our current students:
uom.link/salc-pg-unibuddy

WHAT TO EXPECT AS A POSTGRADUATE RESEARCHER

During your doctoral studies you'll develop an original piece of research on a topic of your choice, using a range of methods.

You'll take the lead on your project, but will also be supported by at least two supervisors, meeting around once a month to discuss your progress.

Our PhD community is home to a diverse and passionate group of researchers from nearly 100 different countries working in a range of disciplines. This brings a real sense of community, with individuals to look to for inspiration, friendship and support.

We encourage interdisciplinary working and the sharing of ideas, and you'll be respected and valued for your individual contributions, working in partnerships with our wider academic community.

There'll also be plenty of opportunities to get involved in activities, such as:

- Workshops
- Seminars
- Conferences
- International research trips
- Funded fieldwork
- Regular opportunities to share your findings with your peers
- The chance to get hands-on teaching experience as a graduate teaching Assistant.

Explore our PhD community:
uom.link/hums-phd-community



We set up a WhatsApp group for mutual support and we all exchanged ideas and how to deal with different difficult situations, and we continue to meet over beer, and discuss our research of course!

Paulina Kolata
PhD Japanese Studies

Chat to our current students:
uom.link/salc-pg-unibuddy

RESEARCH TRAINING AND PROFESSIONAL DEVELOPMENT

As a doctoral researcher at Manchester, you'll be encouraged to think about the impact of your research alongside your career aspirations and given opportunities to gain the experience and skills to make your ambitions a reality.

We work hard to provide funded opportunities for personal and professional development throughout your doctoral journey.

Research development support

Our dedicated team offer training sessions to build your skills and confidence, including:

- Writing and presenting
- Viva preparation, thesis submission and preparing for your Review Panel
- Public engagement
- Wellbeing
- Language training
- Specialist software
- Time management
- Blogging, social media and poster design

You could also become part of our Developing Intellectual Leaders Programme, aimed at postgraduate researchers wanting to make the most of their leadership potential.

An inspiring environment

You'll be part of a supportive environment that will stimulate intellectual debate and development.

- You'll be supported to present at international conferences and workshops.
- We will encourage you to publish in high-quality outlets.
- There will be opportunities to independently organise research-related events.
- You'll have access to excellent facilities and work spaces.

Explore our training and development opportunities:
uom.link/hums-phd-training



Research placements, internships and exchanges

We offer opportunities to work with a variety of external partners, providing a great opportunity to engage in knowledge exchange and develop your professional network.

Our students have been on placements with partners such as the National Trust to do archival research in estates around the North West, to the Cabinet Office in London to undertake policy placements, as well as HOME, The British Library and the National Football Museum to name a few.

Our global Postgraduate Researcher Exchange programmes include:

- Purdue University, Indiana
- University of Copenhagen
- National University of Singapore (NUS)

"The University is encouraging of getting involved in workshops, conferences and all sorts of opportunities that develop transferable skills, but also skills for becoming a researcher that can navigate not just their own research but also the research field. One of the initiatives I got involved in was my cooperation with the Centre for Contemporary Buddhist Studies at the University of Copenhagen."

Paulina Kolata
PhD Japanese Studies

FINDING YOUR SUPERVISOR

The relationship you'll have with your supervisors will be a key part of your PhD – they will develop your thinking, inspire you with their expertise and encourage you.

Things to consider:

- You'll have at least two supervisors to support you throughout your PhD, a main supervisor and co-supervisor.
- It's a close relationship, formed over at least three years, so you'll need to feel comfortable asking questions and sharing your thoughts and ideas.
- In order to develop your potential as a researcher, it's best to find a supervisor who works in your specific field, shares your research interests, and believes in your proposal.
- Get in touch with potential supervisors before you apply. Most supervisors will provide support and advice on developing your research proposal, which could increase your chances of securing funding.



Browse our supervisors' research profiles, and get in touch:
uom.link/hums-phd-supervisor

WRITING YOUR RESEARCH PROPOSAL

As part of your application you'll need to write a research proposal. This is the main way you can share your ideas and interests with us, and we can judge whether you have what it takes to excel as a doctoral candidate.

- Give your proposal the time and energy it deserves, and you'll give yourself the best chance to turn your idea into a realistic research project. The earlier you can start this, the better.
- Make sure you're aware of the context of your research and anything similar that's happening out there. But when it comes to your proposal, keep the literature focused and directly relevant to your project.
- Keep your proposal concise, and make sure your title is clear. Typical proposals tend to be around 1,500-2,000 words but do vary by programme, so make sure to check with your programme's admissions team or prospective supervisor.
- Include a work plan in for your research, with timelines and milestones. This will show assessors you're confident you can realistically achieve your research aims.
- Give your proposal a clear structure. We suggest: title, abstract, literature review, research questions, methods, work plan, conclusion, references.
- Make sure your proposal is correctly referenced and your bibliography is comprehensive.
- You'll probably work through several versions before it's ready to submit, so allow time for editing and proofreading as part of the process.

Take a look at our guidance on writing your research proposal:
uom.link/hums-phd-proposal

SUPPORTING YOU AND YOUR STUDIES

At Manchester, we pride ourselves on supporting you to be the best you can be. That's why we offer a comprehensive range of services to help you flourish.

- You'll be assigned an academic adviser for one-to-one support and advice on any aspect of student life, and can chat to lecturers about your course during their office hours.
- The Student Services Centre is your one-stop shop for administrative issues, including registration and fees.
- You can always talk to someone. Services include: The University Counselling Service offering free confidential advice from trained counsellors, the independently run Students' Union Advice Service, ResLife pastoral teams (in University accommodation) and Nightline, an anonymous telephone helpline run by students.
- Our Disability Advisory Support Service offers help if you have any needs arising from a medical condition, physical or sensory disability, specific learning disability or mental health difficulty that affects your studies.
www.manchester.ac.uk/dass
- Our Students' Union runs a parents and carers network to offer support for students with children, and there are two excellent nurseries located conveniently on campus.
- Our diverse community offers opportunities for prayer and faith-based activities for all major religions on campus. There are Students' Union societies for most religions, with strong links to wider faith communities in Manchester.
- We offer a full range of services to our international students before and after your arrival in the UK, including dedicated immigration advice, pre-departure sessions and a tailored Orientation programme.
www.manchester.ac.uk/international

We're committed to a positive learning environment for all our students, where everyone is treated with respect and dignity.

www.manchester.ac.uk/equalityanddiversity

Find out how we can help you succeed:
www.manchester.ac.uk/student-support



Disclaimer

This prospectus was printed in 2019 for the purposes of the 2020 intake. It has therefore been printed in advance of course starting dates. As such, for a number of reasons, master's course information, including, for example, details of course content, module availability and/or published term dates, may be amended either prior to or after you apply for a place on a course. These reasons may include, but are not limited to:

- the need to make, for operational and/or academic reasons, reasonable changes to the content and teaching offered in relation to any course;
- the withdrawal of courses due to cohort numbers being insufficient;
- a course not receiving the relevant accreditation required;
- interruption or loss of key services due to circumstances beyond our control, including fire, flood or other operational issues.

Prospective master's students are reminded that they are responsible for ensuring, prior to applying, or accepting an offer, to study at The University of Manchester, that they review up-to-date course information, by searching for the relevant master's course at: www.manchester.ac.uk/study/masters/courses

All information relating to tuition fees and funding is correct at the time of publication. However, this may change for a number of reasons, including changes to government policy.

LET'S TALK

Postgraduate Admissions Office
School of Arts, Languages and Cultures
Ellen Wilkinson Building
Oxford Road
Manchester, M13 9PL
United Kingdom

Tel: +44 (0) 161 532 9675/
+44 (0) 161 532 9679

Email: masalc@manchester.ac.uk

uom.link/salc-pg

VISIT US

Our guided visits include a presentation on the University, a question-and-answer session with current students, and a campus tour. Take an accommodation tour of some halls of residence, including a guided tour and a viewing of at least one student bedroom.

Alternatively feel free to take an independent look around campus. Our Gift Shop in University Place can provide maps and information. It's open Monday to Friday, 9am–5pm.

uom.link/salc-visit



SPEAK TO A STUDENT

Want to find out more about student life? Speak to our current postgraduate students who will be happy to answer questions about their experience at Manchester.

uom.link/salc-pg-unibuddy



School of Arts, Languages and Cultures
Ellen Wilkinson Building
Oxford Road
Manchester, M13 9PL
United Kingdom

Tel: +44 (0) 161 532 9675 / +44 (0) 161 532 9679
Email: masalc@manchester.ac.uk
uom.link/salc-pg

October 2019
Royal Charter Number RC000797

Design by nectarcreative.com

