

# Patient and Public Involvement and Engagement (PPIE) in the Faculty of Biology, Medicine and Health: Standards and Governance

## Table of Contents

Best Practice for Patient and Public Involvement and Engagement (PPIE) in the Faculty of Biology, Medicine and Health.....	
Background.....	3
Our Patient and Public Involvement and Engagement (PPIE) (Aspirational) Standards...3	
FBMH Patient and Public Involvement and Engagement (PPIE) Governance.....	4
University and Faculty (Biology, Medicine and Health) Social Responsibility and Patient and Public Involvement and Engagement Governing Committees.....	5

## Background

High quality Patient and Public Involvement and Engagement (PPIE) is integral to achieving excellent Social Responsibility in the Faculty of Biology, Medicine and Health's research and teaching. Successful grants (e.g. NIHR Biomedical Research Centre, Wellcome Trust & Heritage Lottery Funding) have all had strong PPIE embedded within them through involving and engaging with patients and the public ('public contributors'). It is critical that we involve and engage the public to the highest possible standards. To this end, the Faculty's Patient and Public Involvement and Engagement (PPIE) Forum has drafted the following aspirational standards which will be supported through the forum's action plan<sup>1</sup>:

## Our Patient and Public Involvement and Engagement (PPIE) (Aspirational) Standards

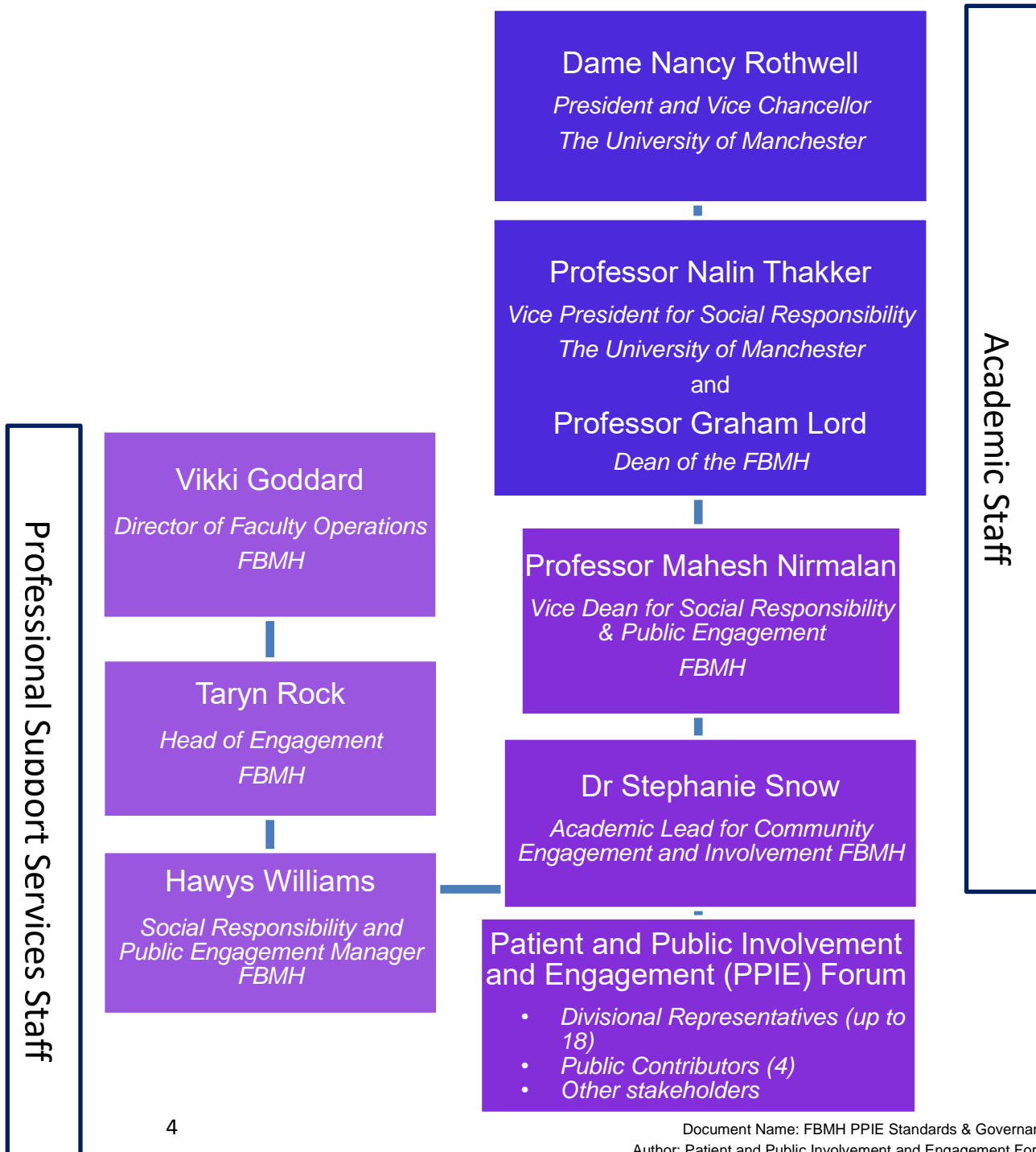
(These have been adapted from the INVOLVE's draft standards)

We will:	Relevant section(s) of Action Plan
1. Provide inclusive opportunities for a wide range of people across research and teaching	5, 6, 7, 8, 9, 10
2. Work together to create and sustain respectful relationships, policies, practices and environments for effective working in teaching and research	6, 7, 8, 13, 14
3. Provide clear and regular communications as part of undertaking all PPIE	4, 5
4. Always invite public contributors to feed back to us and always feed back to them	5, 13, 14
5. Listen to our public contributors and ensure that their voices are heard, valued and acted upon – ensuring that we <i>always</i> feedback to them	5, 13, 14, 15
6. Assess, report and act on the impact that PPIE has had on our research and teaching	16
7. Provide everyone with the necessary support to undertake PPIE with confidence and competence	11, 13, 14, 15
8. Make sure that everyone who works with us will recognise and promote the value of PPIE	1, 2, 3, 4, 5, 7, 8
9. When things don't go to plan or as well as we would like, we will ensure that we provide the necessary support to all of those affected to enable full resolution, remedial action is take and that lessons are learnt.	13, 14, 15

<sup>1</sup> Faculty of Biology, Medicine and Health (FBMH) PPIE Forum Action Plan: available at <http://documents.manchester.ac.uk/DocuInfo.aspx?DocID=42643>

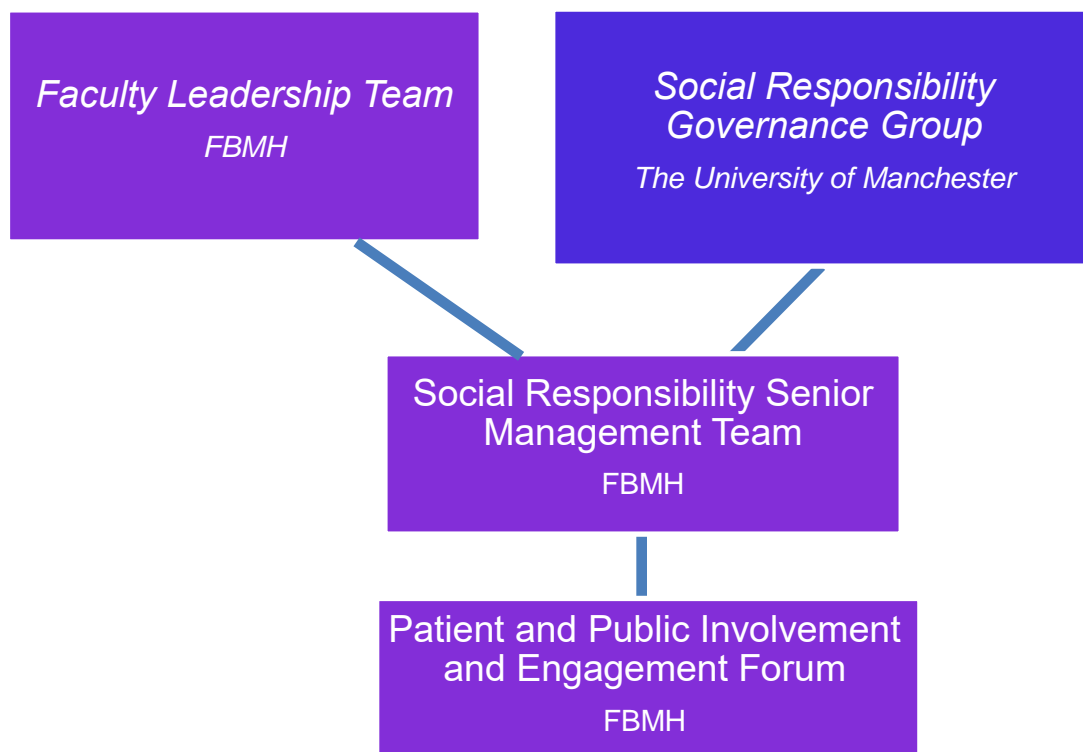
## FBMH Patient and Public Involvement and Engagement (PPIE) Governance

The Faculty has a duty to conduct all of our affairs in a responsible and transparent way. Good PPIE governance makes sure that we achieve our aims of involving and engaging with the public in an ethical, effective and efficient way. Patient and Public Involvement and Engagement (PPIE) is governed at Faculty level by the Faculty Leadership Team and by the Social Responsibility Governance Group at University level.



The Faculty PPIE forum, which provides the strategic direction for PPIE across the Faculty, is chaired by Dr Stephanie Snow who, with respect to PPIE reports to the Vice Dean of Social Responsibility and Public Engagement, Prof. Mahesh Nirmalan. Prof. Nirmalan reports to the Faculty Dean, Prof. Graham Lord, as well as the University Vice President for Social Responsibility. Professional support is provided by the Faculty Social Responsibility and Public Engagement Manager, Hawys Williams, who is managed by the Head of Engagement, Taryn Rock.

## University and Faculty (Biology, Medicine and Health) Social Responsibility and Public Engagement Governing Committees



For further information on the University of Manchester's governance, please go to:

<http://www.manchester.ac.uk/discover/governance/structure/>