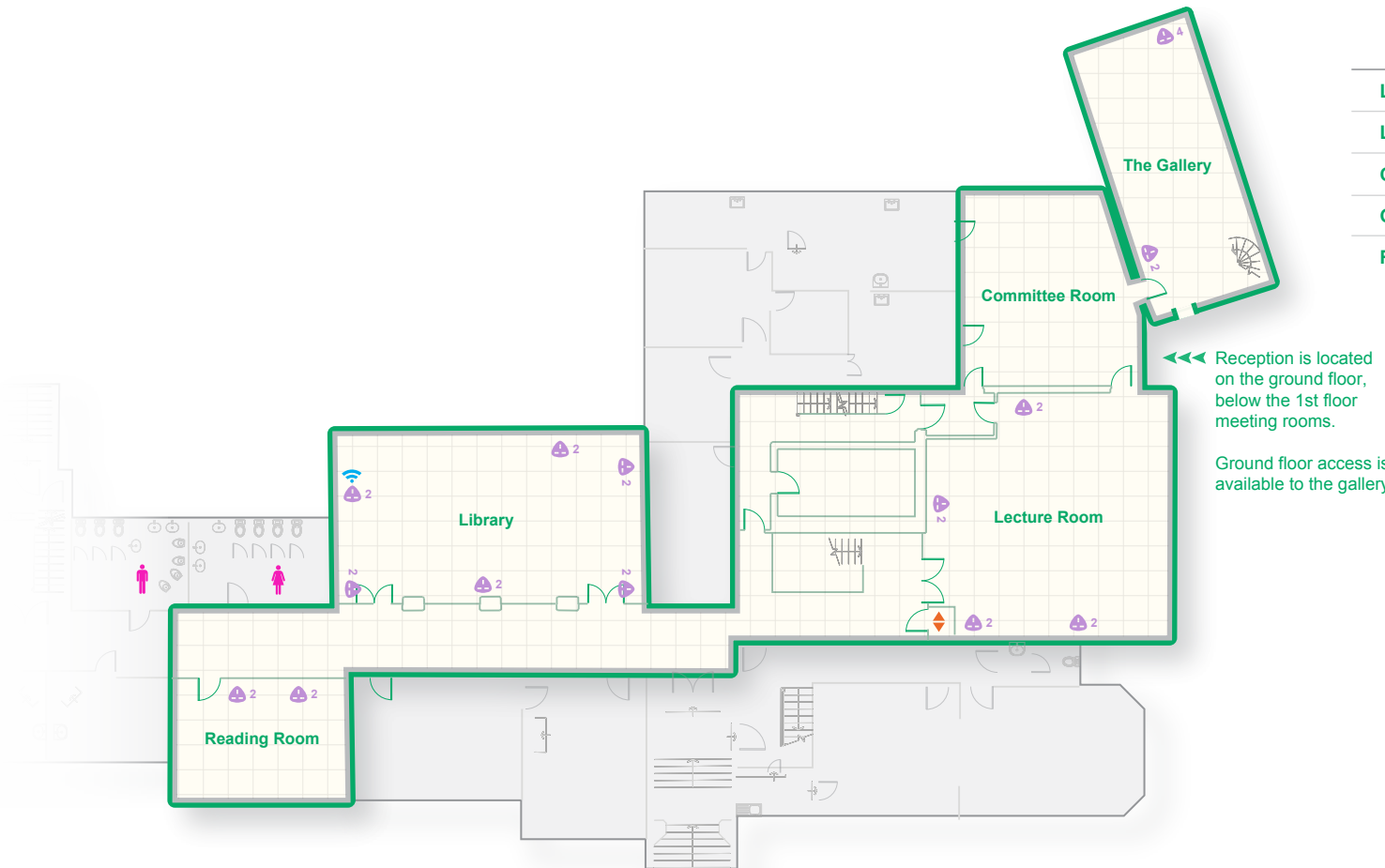


Dalton Ellis Hall



Room	W (m)	L (m)	H (m)	A (m ²)	Capacity
Lecture Room	9.6	9.6	3	86	80
Library	6.7	12.5	3	80	50
Committee Room	7.6	7	3	50	25
Gallery	11.1	4.6	3	52	35
Reading Room	4.6	6.5	3	31	12

←← Reception is located on the ground floor, below the 1st floor meeting rooms.

Ground floor access is available to the gallery

1 floor
st



Lift



Toilets



Power Point



WiFi



Fire Call Point



Refuge Call Point

Scale

□ = 1m

1cm = 3m
when printed at A4