

Faculty of Biology, Medicine and Health

High level organisational structures and senior management teams

14 November 2017



FBMH academic structure

EDUCATION & TRAINING ACADEMY

DOCTORAL ACADEMY

SCHOOL OF BIOLOGICAL SCIENCES

SCHOOL OF MEDICAL SCIENCES

SCHOOL OF HEALTH SCIENCES

STRATEGIC RESEARCH DOMAINS

- Cancer
- Cardiovascular, Endocrine & Metabolic Sciences
- Cellular & Developmental Systems
- Evolution, Systems & Genomics
- Infection, Immunity, Inflammation & Repair
- Neuroscience & Mental Health
- Platform Sciences & Technologies
- Population Health

Division of
Cell Matrix Biology
& Regenerative Medicine

Division of
Evolution & Genomic Sciences

Division of
Infection, Immunity
& Respiratory Medicine

Division of
Molecular & Cellular Function

Division of
Musculoskeletal & Dermatological
Sciences

Division of
Neuroscience & Experimental
Psychology

Division of
Cardiovascular Sciences

Division of Dentistry

Division of
Developmental Biology
& Medicine

Division of
Diabetes, Endocrinology
& Gastroenterology

Division of Medical Education
(including CHSTM)

Division of
Cancer Sciences

Division of
Human Communication,
Development & Hearing

Division of Informatics,
Imaging & Data Sciences

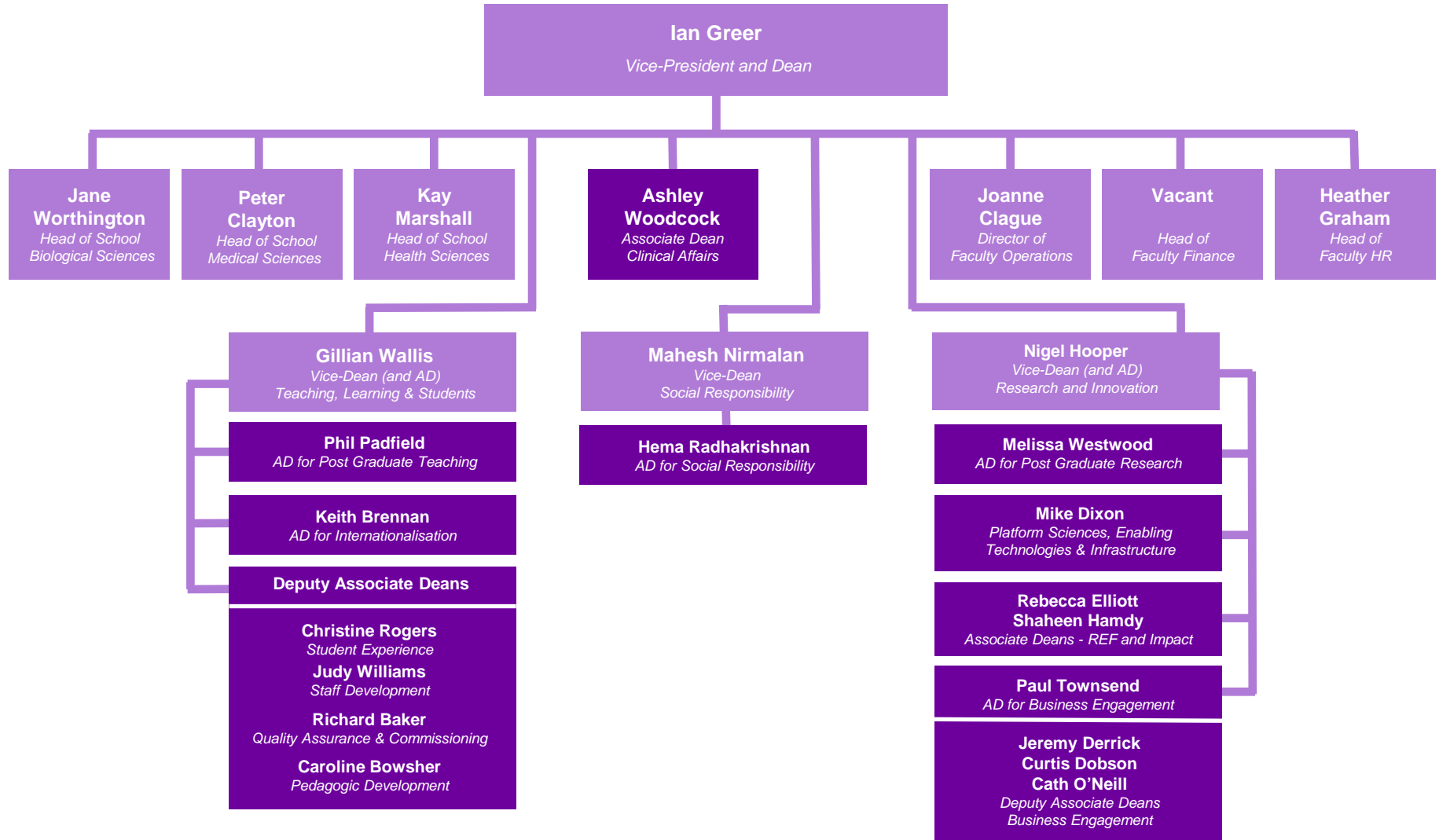
Division of
Nursing, Midwifery & Social Work

Division of
Pharmacy & Optometry

Division of Population Health,
Health Services Research
& Primary Care

Division of
Psychology & Mental Health

FBMH senior management team



FBMH Heads of Schools and Divisions

SCHOOL OF BIOLOGICAL SCIENCES	SCHOOL OF MEDICAL SCIENCES	SCHOOL OF HEALTH SCIENCES
<p>JANE WORTHINGTON Head of School</p>	<p>PETER CLAYTON Head of School</p>	<p>KAY MARSHALL Head of School</p>
<p>Division of Cell Matrix Biology & Regenerative Medicine</p>	<p>Division of Cardiovascular Sciences</p>	<p>Division of Human Communication, Development & Hearing</p>
<p>JUDITH HOYLAND Head of Division</p>	<p>TONY HEAGERTY Head of Division</p>	<p>GINA CONTI-RAMSDEN Head of Division</p>
<p>Division of Evolution & Genomic Sciences</p>	<p>Division of Dentistry</p>	<p>Division of Informatics, Imaging & Data Sciences</p>
<p>SIMON HUBBARD Head of Division</p>	<p>PAUL COULTHARD Head of Division</p>	<p>ANDY BRASS Head of Division</p>
<p>Division of Infection, Immunity & Respiratory Medicine</p>	<p>Division of Developmental Biology & Medicine</p>	<p>Division of Nursing, Midwifery & Social Work</p>
<p>ANGELA SIMPSON Head of Division</p>	<p>ED JOHNSTONE Head of Division</p>	<p>NICKY CULLUM Head of Division</p>
<p>Division of Molecular & Cellular Function</p>	<p>Division of Diabetes, Endocrinology & Gastroenterology</p>	<p>Division of Pharmacy & Optometry</p>
<p>DEAN JACKSON Head of Division</p>	<p>JOHN MCLAUGHLIN Head of Division</p>	<p>JAYNE LAWRENCE Head of Division</p>
<p>Division of Musculoskeletal & Dermatological Sciences</p>	<p>Division of Medical Education (including CHSTM)</p>	<p>Division of Population Health, Health Services Research & Primary Care</p>
<p>ANNE BARTON Head of Division</p>	<p>DOUG CORFIELD Head of Division</p>	<p>ARPANA VERMA Head of Division</p>
<p>Division of Neuroscience & Experimental Psychology</p>	<p>Division of Cancer Sciences</p>	<p>Division of Psychology & Mental Health</p>
<p>DANIELA MONTALDI Head of Division</p>	<p>TIM ILLIDGE Head of Division</p>	<p>GILLIAN HADDOCK Head of Division</p>

FBMH Research Domain Directors

SCHOOL OF BIOLOGICAL SCIENCES	SCHOOL OF MEDICAL SCIENCES	SCHOOL OF HEALTH SCIENCES

<i>Research Domain</i>	<i>Director</i>
Cancer	SALVADOR MONCADA
Cardiovascular, Endocrine & Metabolic Sciences	BERNARD KEAVNEY
Cellular & Developmental Systems	KARL KADLER
Evolution, Systems & Genomics	VACANT
Infection, Immunity, Inflammation & Repair	TRACEY HUSSELL
Neuroscience & Mental Health	STUART ALLEN
Platform Science & Technologies	MIKE WHITE
Population Health	VACANT

--	--	--

FBMH - PSS senior management team

