

WELCOME TO YOUR NEW HOME



St Gabriel's Hall

The information in this booklet is designed to help answer some essential questions you may have before your arrival at University Residences.

Information in this booklet is correct at the time of writing, however may be subject to change



So you're moving in – what next?

Just over 450 people work within the residences here at the University of Manchester who will all help to settle you in and make sure your life in hall runs smoothly. Staff will be on site during our main arrival days in September, please feel free to ask for any assistance you may require. Please also refer to the online Residences Guide for more detailed information.

Contact Details

Address : St Gabriel's Hall, 1 Oxford Place, Manchester, M14 5RP
Reception Number: 0161 306 9880
Email: victoriaparkadmin@manchester.ac.uk

St Gabriel's residents use the reception located at Hulme Hall (it's just across the road!) this is open from 8am – 6pm Monday to Friday. There are times when this may vary so keep your eye open for information posters and emails which will keep you informed.

Finding your way to Hulme Hall / St Gabriel's

By Air: Manchester International Airport is approximately 10 miles from Hulme Hall (about 20 minutes by taxi). If you wish to take the train from the airport there is a 24-hour service which runs 7 days a week, every 15 minutes during peak times and goes direct to Piccadilly Train Station. From the station either take a taxi or take a short walk to Piccadilly Bus Station and catch a bus. For airport information and further travel information click [Here](#).

By Car: Just use Satnav reference : M14 5RP.

By Taxi: Taxi Ranks can be found at railway stations and the fare is approximately £5.00. The fare from Manchester Airport is approximately £12.00 – £15.00.

By Bus: From the City Centre look for a bus to East Didsbury / Owens Park, ask the driver to take you to the nearest bus stop for Hulme Hall in Rusholme.

By Rail: Most long distance trains arrive at Manchester Piccadilly Station. From here either take a taxi (approx. 15 minutes) or take a five minute walk to Piccadilly Gardens Bus Station. Short distance rail service arrives / departs from Manchester Oxford Road Station and Manchester Victoria Station. Information on National rail enquiries can be found [Here](#).

Hall Information

Located in Victoria Park, but just minutes away from Wilmslow Road and the main bus route to the University and City Centre as well as the famous Curry Mile, St Gabriels Hall is a female only hall of residence. The hall was originally founded by the Bolton Sisters of the Cross and occupies the land that once sited houses called Woodthorpe and the Lodge. The main part of the hall is arranged on 3 sides of a courtyard.

St Gabriel's Hall, affectionately known as 'Gabs' is a small and friendly hall with a caring and lively atmosphere, offering single sex accommodation on a fully catered basis. Most rooms have shared bathroom facilities. A small number of En-suite rooms are available.

The hall has a pleasant community atmosphere with regular formal dinners, and an active JCR who organize a variety of social events and activities during the year. St Gabriel's also has its own gym and sports teams.

St Gabriel's is a catered hall of residence with breakfast served between 7.30am – 9.30am and dinner between 5.15pm – 7.15pm Monday to Friday.

If you find you are unable to attend the breakfast or dinner service, please speak to a member of the catering team who would be happy to help you complete a replacement meal request form, please note that a minimum of 24-hours' notice will be required for a replacement meal to be arranged for you.

We offer a wide choice for both breakfast and dinner, including vegetarian and healthy options. Breakfast is a buffet selection including a full cooked option as well as cereals, fresh fruit, yogurts, croissants, cheese etc. Hot drinks and Fruit Juice are also available.

If you have a special dietary requirement or have any suggestions you would like to make please contact our on-site catering team who will be happy to help

Internet and WiFi

In some communal areas in University of Manchester halls of residence there are University access points for wireless. These will always show up as University when your computer scans for local Wi-Fi. You can use these to connect to the Internet. Students are prohibited from setting up their own wireless access points in hall. Please note Wi-Fi access can be limited, however all bedrooms do have wired access to the Ethernet - for more information on this service consult the HORNET pages

Key Collection

During the online induction process you will be asked to book an arrival slot (September arrival only) if you need to come earlier than the official contract start date shown on your offer, you can book and pay for extra nights' accommodation by contacting reception or book via our on-line store. Rooms will be allocated subject to availability and are not guaranteed.

Room keys will be available from St Gabriel's Hall between 10:00 – 18:00 hours (please arrive according to your slot time) on your chosen arrival date. If you arrive outside of these hours, please contact the Residential Life Advisor for assistance by calling 01990 802704.

Please remember to bring with you:

- Your key release form (this is printable at the completion of your online induction)
- Photographic ID.
- You will also need to bring 3 x passport photographs on the day of your arrival.

If you will be arriving later than your contract start date, please do contact us to let us know when to expect you.

If you lose your key / fob / swipe card at any time during your stay at St Gabriel's, please let us know immediately. There is a charge for replacements, although if you later find them within 7 days of reporting them lost your money will be refunded.

Arrival by Car

If you are arriving by car please note that car parking is limited, once you have unloaded your car we ask that you remove it from the car park to allow others to unload. **Please note there is no parking on site during term time.**

Hotel Accommodation

If we cannot provide you with early arrival accommodation or if your family wishes to stay locally over your first few days then information on Manchester hotels can be found at <http://www.manchester.com/hotels/>.

Laundry Facilities

St Gabriel's has its own laundry room situated on the ground floor of the block. The laundry includes washing machines and tumble dryers and use either cards or apps to operate. These can be topped up online.

What do I need to Bring?

In your room we provide a bed, desk, desk chair, lamp, wardrobe and chest of drawers. You will need to bring with you bed linen (single size, unless you have been allocated a super single in which case we would recommend you bring a double), duvet, pillows and towels. You may wish to bring with you some cooking utensils, crockery, cutlery and pans for use at weekends etc. A limited number of bedding packs can be purchased from the reception area on arrival but these are subject to availability or you can pre order them from our on-line store.

Information in this booklet is correct at the time of writing, however may be subject to change

At St Gabriel's there are kitchen areas in each block. Our kitchens include an oven, hob, fridge, freezer, kettle, microwave and toaster for students to use. You should arrange to bring with you any cooking utensils, crockery, cutlery and pans that you may require. A top tip is to wait until you arrive and arrange with others in your kitchen who buys what – that way you won't end up all bringing the same things !

A limited number of bedding packs can be purchased from reception on arrival but these are subject to availability or you can pre order them from our on-line store.

Hotel Accommodation

If we cannot provide you with early arrival accommodation or if your family wish to stay locally over your first few days then information on Manchester hotels can be found at <http://www.manchester.com/hotels/>.

Rent Payments

By accepting your licence agreement you agree to pay the rental value on the property you will be occupying. This can be done either via one instalment, due in October or by 3 instalments in October, January and April. If you haven't done so already please complete a direct debit mandate form which will allow a transfer of funds from your bank account to ours and tell us which instalment plan you would like to use. If you have not set up a direct debit you should note that you will become liable for the full rental costs for the full rental period in October. If you want to discuss this further please contact our student services centre on 0161 275 5000 who will be able to assist.

Mail

Please ensure that your mail is correctly addressed. Letters will be delivered into mailboxes located inside St Gabriel's. Larger items, registered letters or parcels will be delivered to the Hulme Hall reception for you to collect during office hours, please note that you will always be required to show your student ID card to collect items.

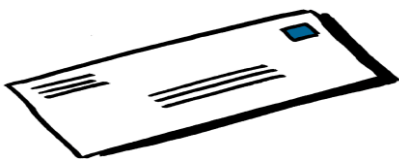
Please make sure you tell everyone your correct address – your name / house Name / flat number / room number followed by the address and postcode (see example below)

Name
Room number
St Gabriel's Hall
Oxford Place
Victoria Park
M14 5RP

Reception staff are more than happy to sign for items on your behalf; however we do have the following criteria for doing so...items should not be:

- Larger than 300mm depth x 300mm height x 400mm width
- Over £150 in value
- More than 11kgs in weight
- Perishable food

If you are expecting an item that does not meet the criteria please arrange to have the delivery company call you directly to arrange delivery. You should note that if reception do sign or accept any item we cannot be responsible for lost or damaged items. If you leave Hulme Hall you should arrange to redirect your mail as we cannot send on mail to you once you have vacated. Should we unknowingly sign for items of high value (over £150) we will not be held liable for any loss. In the case of any subsequent claim for loss or damage of any mail item the maximum compensation will be £150.



During vacations, mail will continue to be placed in your mailbox, if you are expecting something that may arrive in vacation time please arrange an alternative address with the sender.

Amazon Lockers

Some of our residences have Amazon lockers where you can arrange to have a parcel delivered or leave one to be collected. They are very simple to use! St Gabriel's students can use the Hulme Hall locker.

Firstly you need to add the locker to your Amazon address book; the names of the lockers are listed below:

Locker Name	Location
Hay	Owens Park
Guffaw	Richmond Park
Gulp	Hulme Hall
Grass	Oak House
Halfpipe	Dalton Ellis Hall
Orange	Wright Robinson Hall
Gum	Oak House
Elbow	Whitworth Park

Please note that you must be a resident at the Locker location to use this service. Some of the lockers are located inside areas where you require a key to access. The lockers should not be used for anyone who is a non-resident – Amazon will delete the account of anyone using a locker who is not in that accommodation.

1. Type www.amazon.co.uk/add***** into your browser. Replace *** with the name of the locker you wish to add to your account. Don't use spaces.
2. You'll be redirected to Amazon, sign into your account.
3. Once signed in Amazon will automatically add the address to your account.

From now on, simply select to "Dispatch / Return to this address" during checkout/returns process and complete your transaction as usual. All items must be eligible for a delivery to a locker.

How do I collect my package?

Once your parcel is delivered to the Amazon Locker, you'll receive an email notification with a unique pick up code. When you arrive to collect your parcel, enter your pickup code or scan the barcode using the barcode scanner and follow the instructions on the screen.

All parcels delivered to locker locations must be picked up within 3 business days. If you're not able to collect your parcel within this timeframe, the parcel will be returned for a full refund.

Room Inventories

You will receive an inventory in your room on arrival, if you don't have one please let reception know. This is your opportunity to report any missing or damaged items. Please return this to reception within 48 hours of arrival and we will arrange to replace any items.

If you have maintenance issues within your room, then we have a Buildings Maintenance System (BM) where you can log these on line. Hulme Hall has a computer near to reception. There will be more information about this in your room when you arrive.

Insurance

All University of Manchester halls are included in a block insurance policy, this is provided by Endsleigh. A basic cover is provided and you are recommended to check on the details to ensure that this level of cover suits your needs. Information on the cover provided can be found [here](#), our policy number is HH1053.



Smoking

All halls are non-smoking areas; this includes the use of E-cigarettes

Computer Network

Halls are connected to the University network and once you have completed your University registration online and signed up for your University username and password you will be able to join the network. Known as HORNET, representatives will be available during key issue.

Overnight Guests

It's your home and you will want to have guests to stay! We would ask that you note that guests are welcome for a maximum of 2 nights in every 7. This can be extended with the written permission of the Residential Life Officer for the hall.

Your Safety & Welfare

The University has a dedicated security team covering all areas 24 hours a day, 7 days a week. To contact them simply call 0800 838 9807 or 0161 306 9966 – we recommend that you put these numbers into your contacts folder on your mobile phone. All security staff are trained first aiders.

Our Residential Life team

(ResLife) are also on hand for any help or support you may need, they will introduce themselves over the first few weeks of residence. Residential Life Advisors (RLA) work on a duty rota and are available from 6pm every night and over the weekend. The number for the RLA for St Gabriel's is 07990 802704. More information about ResLife can be found on the Accommodation website.

Residences Life Team Events

In conjunction with your Residents Association (RA) and Junior Common Room (JCR) ResLife will be organising events, trips, lectures, volunteering events and much more during your time in halls. Please do get involved, these events are a great way to meet new people and find your way around your new city. There will be information up in the hall and on social media.

Fire Safety & Alarms

Fire notices and regulations are displayed throughout St Gabriel's and we would ask you take time when you arrive to read this and also familiarise yourself with the fire alarms and your nearest emergency exit. If you discover a fire, however small, you should sound the fire alarm and evacuate immediately to your assembly point. Please contact security to report the fire on 0161 306 9966. You will be required to attend a fire safety talk during welcome week, the details of which will be confirmed to you.

Our fire alarm systems are tested weekly and you will be told when this will take place. At all other times please do evacuate the building – it's for your own safety.

Our residences health and safety policy is available for you to view at [Here](#) .

Bicycles

St Gabriel's has designated bike shelters for students to use. Please ensure you secure your bike using a D lock. The University also runs a bike registration scheme and subsidised D lock purchases. For more information view <http://www.estates.manchester.ac.uk/services/security/estates-sevices-ian-ourservices/crimereduce/>.

TV Licences

We do not cover any of our residences with a TV licence; therefore you are advised to ensure that you purchase the appropriate licence either prior to or immediately after arrival. If you watch or record programmes as they're being shown on TV or live on an online service - on any device – you need to be covered by a TV Licence.

Medical registration

It is important that you register with the doctor. Representatives from the local practice will be on-site at Hulme Hall during Welcome Week so you can sign up.

All of the team look forward to welcoming you to St Gabriels in September

