

Master of Science in Disaster Management[#] (Resilience, Response and Relief)

Jointly offered by School of Nursing (SN), The Hong Kong Polytechnic University (PolyU) & The Humanitarian and Conflict Response Institute (HCRI), The University of Manchester (UoM), UK

Application Deadline:
29 April 2016

Programme Code: 53087

Programme Leader: Dr Olivia Fung, SN, PolyU

Co-Programme Leader: Dr Bernard Manyena, HCRI, UoM

Duration: 2.5 years to 5 years

Mode of Study: Online

Credits Required for Graduation: 36

PolyU's School of Nursing

SN is a designated World Health Organization Collaborating Centre for Community Health Services and the Secretariat of the Asia Pacific Emergency and Disaster Nursing Network. Our Faculty of Health and Social Sciences also has a mutual collaboration agreement with the United Nations in the area of disaster risk prevention and building risk resilience through education and research. This online Master of Science (MSc) programme is developed on the basis of our expertise in offering an MSc in Disaster Nursing programme, which also has online learning modules. Through this MSc online programme, we aim to develop leaders in the area of disaster management and humanitarian response.

The Humanitarian and Conflict Response Institute

HCRI is a leading global centre for the study of humanitarianism, conflict responses, global health, international disaster management and peacebuilding. It provides cutting-edge humanitarian programmes and the HCRI teaching team comprises renowned researchers and expert practitioners working on a global scale. HCRI offers specialist knowledge and support the exchange of ideas through seminars and workshops. It is also a WHO Collaborating Centre for Foreign Medical Teams.
<http://www.hcri.manchester.ac.uk>

Opening Minds • Shaping the Future
啟迪思維 • 成就未來

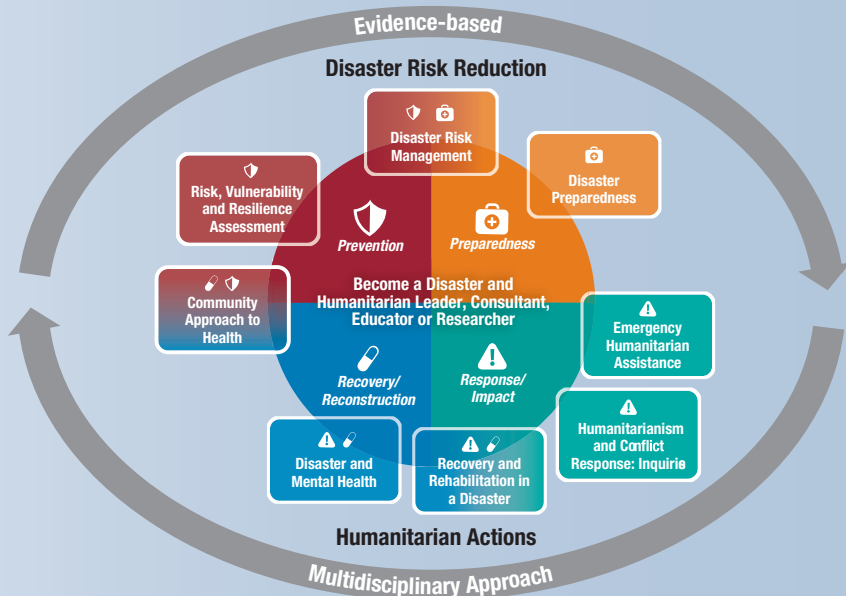


Programme Uniqueness

The Programme:

- Is designed to equip students with advanced knowledge, and to continue their personal development in disaster risk management and humanitarianism
- Is underpinned by a multidisciplinary approach that enables graduates to conduct theoretical and practical analyses, as well as evaluations to support disaster management and humanitarian action in global health contexts
- Is conducted by experienced disaster teaching team members who are trainers for continuing education courses and post-graduate programmes in disaster management
- Is in collaboration with HCRI at The University of Manchester, a leading global centre for the study of humanitarianism and international disaster management
- Provides students with hands-on field placement experience to support their future career development
- Offers flexible online* study which enables students to obtain a master's degree in disaster management without residency and country boundary restrictions

* The Ministry of Education of The People's Republic of China reserves the rights to recognise the qualification of online programmes.



Objectives

This programme provides participants with the opportunity to develop and expand knowledge, understanding and judgment in theoretical and practical disaster management and humanitarian action.

Programme Structure

	No. of Subject(s)	Credits
Compulsory Subjects	3	15
Core Subjects	5	15
Elective Subjects	2	6
Total	10	36

Compulsory Subjects (15 credits)

- Advanced Research Methods (Qualitative Research)
- Advanced Research Methods (Quantitative Research)
- Dissertation

Core Subjects (15 credits)

- Disaster Preparedness
- Emergency Humanitarian Assistance
- Introduction to Disaster Risk Management
- Recovery and Rehabilitation in a Disaster
- Risk, Vulnerability and Resilience Assessment

Elective Subjects (6 credits)

- Community Approach to Health
- Disaster and Mental Health
- Field Placement
- Humanitarianism and Conflict Response: Inquiries

Target Students

This programme is particularly relevant for those who are currently working in/aspire to work in healthcare settings, the armed forces, government or non-government agencies and disaster management or humanitarian organisations.

Entrance Requirements

- Bachelor's degree in any discipline; **AND**
- English Language Requirements
 - A Test of English as a Foreign Language (TOEFL) score of 88 for the internet-based test or 570 for the paper-based test; **OR**
 - An overall Band Score of at least 6.5 in the International English Language Testing System (IELTS)

Tuition Fee

HK\$4,865 per credit



Enquiries


School of Nursing

 (852) 2766 4369  (852) 2364 9663

 sn.enquiry@polyu.edu.hk

 <http://sn.polyu.edu.hk>

Academic Secretariat

 (852) 2333 0600 (24-hour automated service)

 <http://www.polyu.edu.hk/study>



School of
Nursing



Academic
Secretariat