

A low-angle photograph of a grand, light-colored stone building with Gothic architectural features, including pointed arch windows and a central gabled entrance. The building is flanked by tall, multi-story wings. The sky is overcast. The text 'MANCHESTER 1824' is overlaid in a purple box in the top left, and 'FACTS AND FIGURES 2015' is overlaid in large white letters on the left side of the building's facade.

MANCHESTER
1824

The University of Manchester

FACTS AND FIGURES 2015

CONTENTS

The University	2
World ranking	4
Academic pedigree	6
Research and innovation	8
Global challenges, Manchester solutions	10
Students	12
Graduate careers	14
Alumni	16
Faculties and Schools	18
Staff	20
Income	22
Campus investment	24
Making a difference	26
Widening participation	28
Visitor attractions	30
At a glance	32

THE UNIVERSITY OF MANCHESTER

Our Strategic Vision 2020 states our mission:

"By 2020, The University of Manchester will be one of the top 25 research universities in the world, where all students enjoy a rewarding educational and wider experience; known worldwide as a place where the highest academic values and educational innovation are cherished; where research prospers and makes a real difference; and where the fruits of scholarship resonate throughout society."

OUR CORE GOALS

- World-class research
- Outstanding learning and student experience
- Social responsibility



WORLD RANKING

The quality of our teaching and the impact of our research are the cornerstones of our success.

According to the 2014 Shanghai Jiao Tong Academic Ranking of World Universities, we are the 38th best teaching and research university in the world.

Year	World ranking	European ranking	UK Ranking
2014	38	7	5
2010	44	9	5
2004*	78*	24*	9*

Source: 2014 Shanghai Jiao Tong Academic Ranking of World Universities

*2004 ranking refers to the Victoria University of Manchester prior to the merger with UMIST.



ACADEMIC PEDIGREE

We attract the highest calibre researchers and teachers, boasting 25 Nobel Prize winners among current and former staff and students.

We have more Nobel laureates on our staff than any other UK university – Andre Geim, Kostya Novoselov (both Physics) and John Sulston (Physiology or Medicine) – and we're led by our President and Vice-Chancellor, Professor Dame Nancy Rothwell FRS, whose research has advanced understanding and treatment of brain damage in stroke and head injury.

We're also home to multi-award-winning writer Jeanette Winterson (Professor of Creative Writing), renowned historian Michael Wood (Professor of Public History) and physicist and TV presenter Brian Cox (Professor of Particle Physics).



Andre Geim



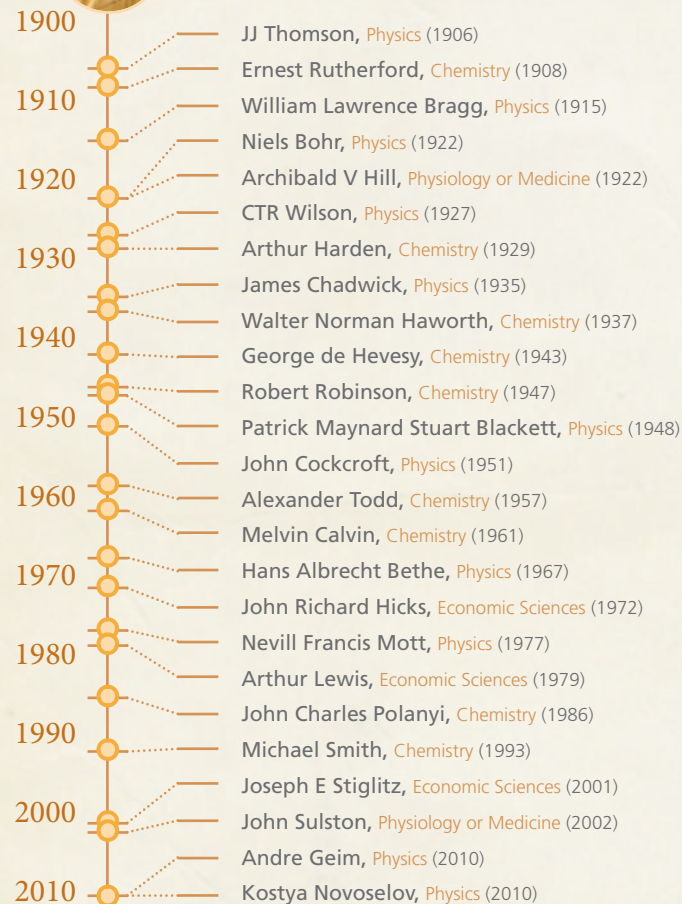
Kostya Novoselov



Brian Cox



NOBEL LAUREATES



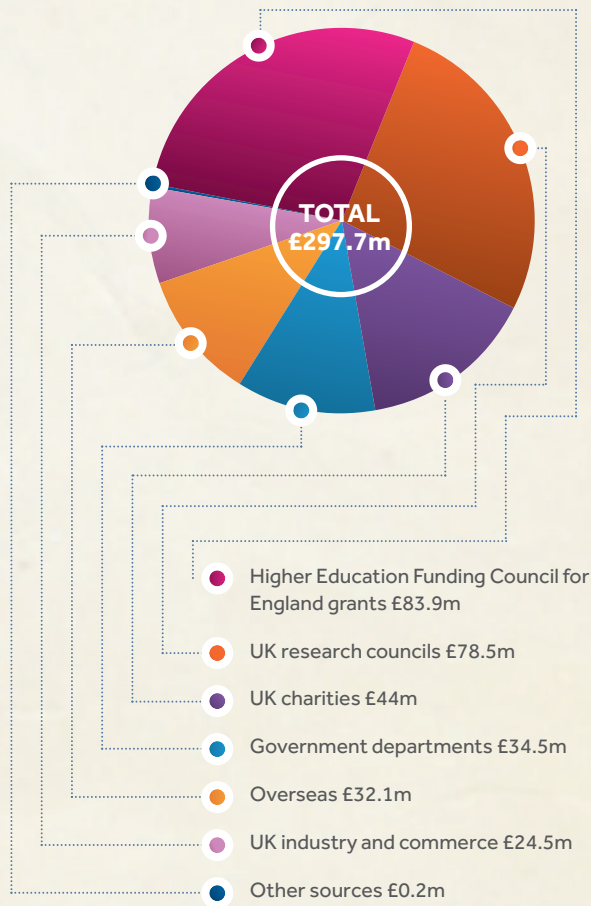
RESEARCH AND INNOVATION

Our place as one of the UK's top research universities was confirmed in the results of the 2014 Research Excellence Framework (REF), where 83% of our research activity was judged to be 'world-leading' (4*) or 'internationally excellent' (3*).

Our history of intellectual property commercialisation spans more than 25 years, during which time we've generated more than 100 spin-out companies.

In the last ten years venture funders have invested £280 million in more than 30 spin-out companies and 31 social enterprise spin-outs, staff start-ups and assisted student start-ups. These have generated more than £75 million and several have received national and regional enterprise awards.

In 2013/14 we attracted more than £297m in external research funding.



GLOBAL CHALLENGES, MANCHESTER SOLUTIONS

We're addressing some of the world's biggest challenges, from global inequalities to cancer. We're developing advanced materials to withstand the harshest environments, pioneering the energy systems of the future and developing sustainable alternatives to the world's finite resources.

Addressing global inequalities

Advanced materials

Cancer

Energy

Industrial biotechnology

www.manchester.ac.uk/beacons



STUDENTS

We have the largest student community in the UK.

We have:

- more than 1,000 degree programmes;
- 8,000 rooms in 23 halls of residence – guaranteeing every first-year undergraduate the offer of a place in University accommodation;
- more than 4.2 million printed books and manuscripts, 29,000 unique electronic journals and 414,000 electronic books;
- the UK's largest students' union.

	Home/EU*	Overseas*	Total*
Undergraduate study	21,480	5,055	26,485
Postgraduate taught	4,560	3,175	7,735
Postgraduate research	2,405	1,300	3,705
Total	28,445	9,480	37,925

In addition, The University of Manchester has 4,240 students studying wholly outside the UK who are either registered with the University or who are studying for a University of Manchester award.**

Source: HESA figures for 2013/14 (numbers rounded to the nearest five)

* Largest total of full-time FTE students, of full-time and part-time FTE students combined, and of full-time FTE international (non-EU) students

** Source: aggregate offshore return student numbers



GRADUATE CAREERS

Top recruiters target Manchester graduates. That's why more than 94% go straight into employment or further study.*

In the 2013/14 academic year:

- 3,900 recruiters advertised jobs, exhibited at fairs and presented on campus;
- our Careers Service provided one-to-one advice via 6,700 appointments and more than 2,100 email communications;
- almost 2,000 students took part in careers education courses;
- 1,350 students participated in the Manchester Leadership Programme, which improves employability by giving students an insight into current global leadership challenges and the opportunity to complete local, national and international voluntary work;
- more than 250 students and graduates secured paid internships via our Manchester Graduate and Student Summer Internship programmes.

*Source: HESA 2013/14



ALUMNI

We have the largest alumni community of any campus-based university in the UK, developing lifelong relationships with almost 280,000 former students in more than 190 countries. Many of our graduates hold positions of seniority in business, academia, politics, industry and the media.

● Jesse Armstrong and Sam Bain

Writers of television comedies *Peep Show* and *Fresh Meat*

● Lord Terence Burns

Chairman, Santander UK and Channel 4

● Professor Brian Cox

Physicist and science communicator

● Jane Cocking

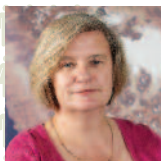
Humanitarian Director, Oxfam

● Sir Philip Craven MBE

President, International Paralympic Committee

● Benedict Cumberbatch

Actor



Jane Cocking



Dame Sally Davies



Lord Norman Foster



Sophie Hannah

● Sir Peter Maxwell Davies

Composer and conductor

● Professor Dame Sally Davies

UK government's Chief Medical Officer

● Lord Norman Foster

Architect and designer

● Sophie Hannah

Poet and novelist

● Teo Chee Hean

Deputy Prime Minister of Singapore

● Toby Jones

Actor

● Ian King

Business presenter, Sky News

● Piers Linney

Co-CEO of IT business Outsourcery and star of BBC2's *Dragons' Den*

● Frances O'Grady

First female general secretary of the TUC

● Chuka Umunna MP

Shadow Secretary of State for Business, Innovation and Skills



Teo Chee Hean



Toby Jones



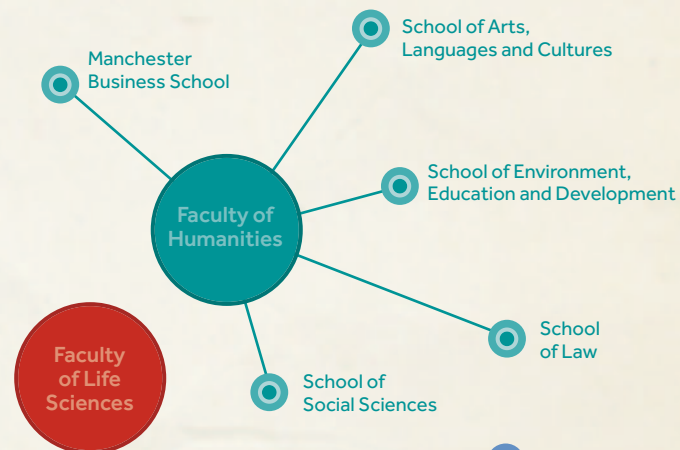
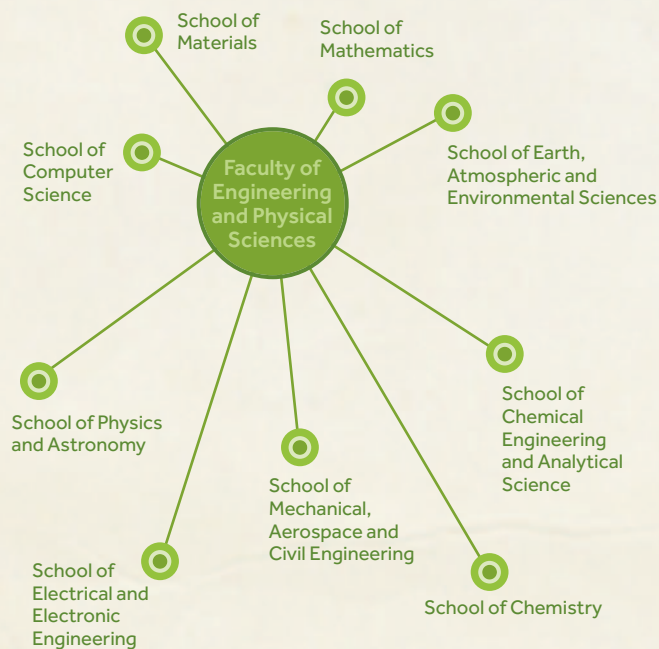
Frances O'Grady



Chuka Umunna

FACULTIES AND SCHOOLS

The University is divided into Faculties, Schools, Institutes and hundreds of specialist research groups, all of which undertake pioneering multidisciplinary teaching and research of worldwide significance.



STAFF

With more than 11,000 staff, we're one of the largest employers in Greater Manchester.

Headcount figures as at 31 July 2014 (rounded to the nearest five).

Academic (including 1,715 teaching-only staff)



3,635

Research



1,995

Clerical/secretarial



1,700

Academic support



1,600

Administrative/management



1,350

Manual/craft



745

Total



11,025

INCOME

We have an annual income of £886 million.
Here's how it all breaks down:

FACULTY OF ARTS

Tuition fees and educational contracts

£352m

Research grants and contracts

£214m

Funding council grants

£162m

Other operating income

£138m

Endowments and investments

£20m

Total

£886m

CAMPUS INVESTMENT

We've invested more than £750 million since 2004 in state-of-the-art buildings, contemporary refurbishments and public realm works, transforming our campus and the surrounding area. Our Campus Masterplan will see us investing a further £1 billion by 2022.

This includes the establishment of our £61 million National Graphene Institute, a bespoke centre for research into the wonder material that won the Nobel Prize for Manchester professors Andre Geim and Kostya Novoselov in 2010.

National Graphene Institute building



MAKING A DIFFERENCE

We're transforming the social, economic and environmental well-being of our communities through our teaching, research and public events and activities.

Here is just a snapshot of the impact we're making.

- We've helped nearly 2,500 local people into work through our employment initiative, The Works, bringing more than £37 million a year in savings to the economy.
- More than 5,000 students volunteer their time to social, educational, health, cultural and environmental well-being programmes, locally and globally.
- 371 staff and alumni support state schools as volunteer governors – more than any other university – generating more than £1 million of economic value.
- We are one of the UK's most gay-friendly University workplaces and have achieved 14 awards and accreditations for gender equality.
- As part of our plan for sustainable travel, we've installed 1,000 bicycle stands, 18 bicycle shelters and 50 shower facilities on campus.



WIDENING PARTICIPATION

We're proud to contribute to the expansion of educational, social and cultural opportunities in Manchester and the wider region.

- We're investing £18.4 million in financial support for students – the highest in the Russell Group.*
- Last year nearly 750,000 members of the public visited our cultural institutions – Manchester Museum, the Whitworth, Jodrell Bank Discovery Centre and the John Rylands Library.
- We give more than 1,000 local school and college students access to our library facilities.
- We offer more than 600 widening participation activities to local schools and colleges each year.

** The Russell Group represents 24 leading UK universities that are committed to outstanding research, teaching and learning.*



VISITOR ATTRACTIONS

Explore a universe of amazing ideas at our inspirational visitor attractions.

The Whitworth

Founded in 1889 as the first English gallery in a park, the Whitworth has been transformed by a £15 million redevelopment. Home to more than 55,000 works of art, the gallery has doubled in size and now includes an art garden, a sculpture terrace, a landscape gallery and a cafe in the trees.

Manchester Museum

Our Ancient Worlds galleries bring to life the great civilisations of Egypt, Rome and Greece. Our Egyptology collection is one of the largest in the UK, with around 16,000 objects from 10,000 BC to the Byzantine era.

The John Rylands Library

Our Grade I-listed, neo-Gothic John Rylands Library houses 250,000 printed volumes and more than a million archival items.

Jodrell Bank Discovery Centre

As well as being home to the 76-metre-wide Lovell Telescope, Jodrell Bank welcomes thousands of music lovers each summer for its spectacular Transmissions series of concerts.



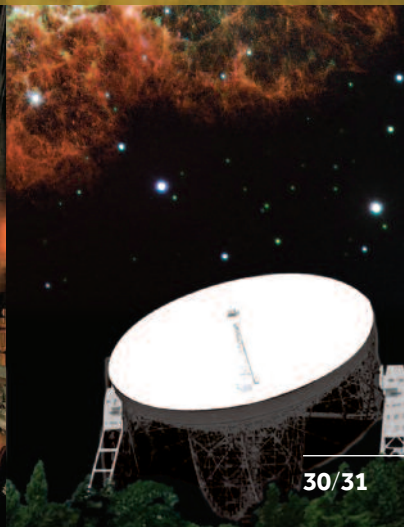
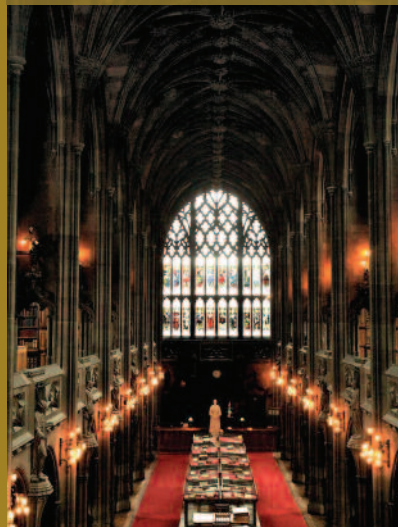
The Whitworth



Manchester Museum

The John Rylands Library

Jodrell Bank Discovery Centre



AT A GLANCE

Ranking

We are ranked 38th in the world, 7th in Europe and 5th in the UK in the 2014 Shanghai Jiao Tong Academic Ranking of World Universities.

Senior officers

Professor Dame Nancy Rothwell, President and Vice-Chancellor

Tom Bloxham, Chancellor

Anil Ruia, Pro-Chancellor and Chairman of the Board of Governors

Gillian Easson, Pro-Chancellor

Students

Undergraduate	26,485
---------------	--------

Postgraduate taught	7,735
---------------------	-------

Postgraduate research	3,705
-----------------------	-------

Staff

including more than 5,600 academic and research staff	11,025
---	--------

Alumni

in more than 190 countries	280,000
----------------------------	---------

Income (2013/14)	£886m
------------------	-------

Buildings	339
-----------	-----

Estate (in acres)	711
-------------------	-----



The University of Manchester
Oxford Road
Manchester
M13 9PL

+44 (0)161 306 6000
www.manchester.ac.uk

Royal Charter Number RC000797
M1322 05.15



When you have finished with
this publication please recycle it

