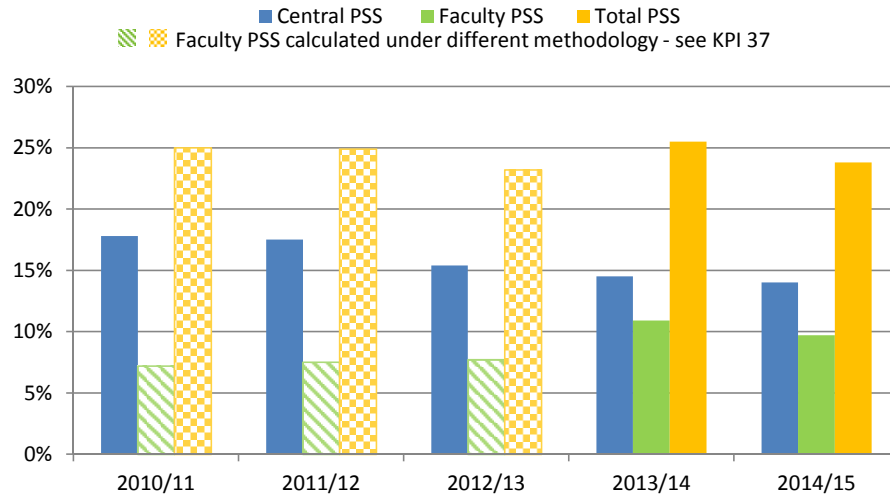
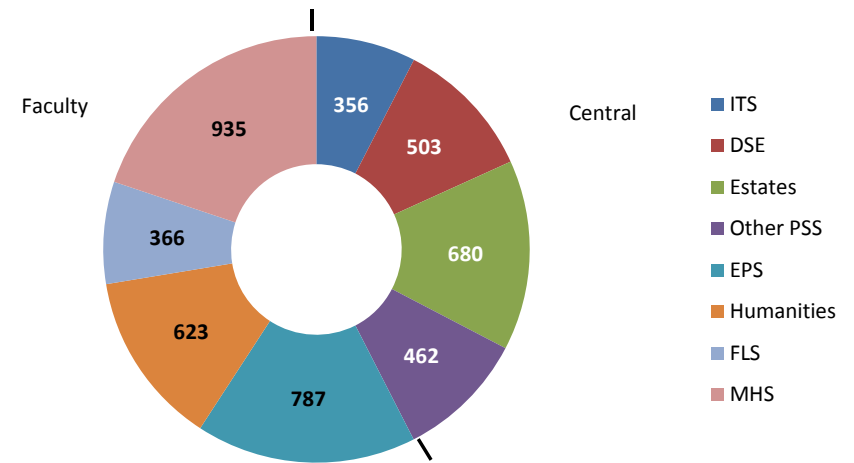


## OVERVIEW

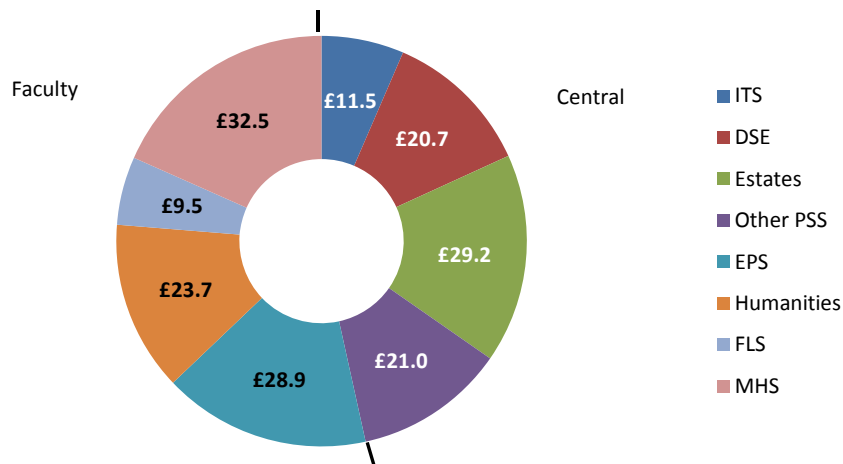
### Annual reduction in total PSS expenditure as a proportion of recurrent income



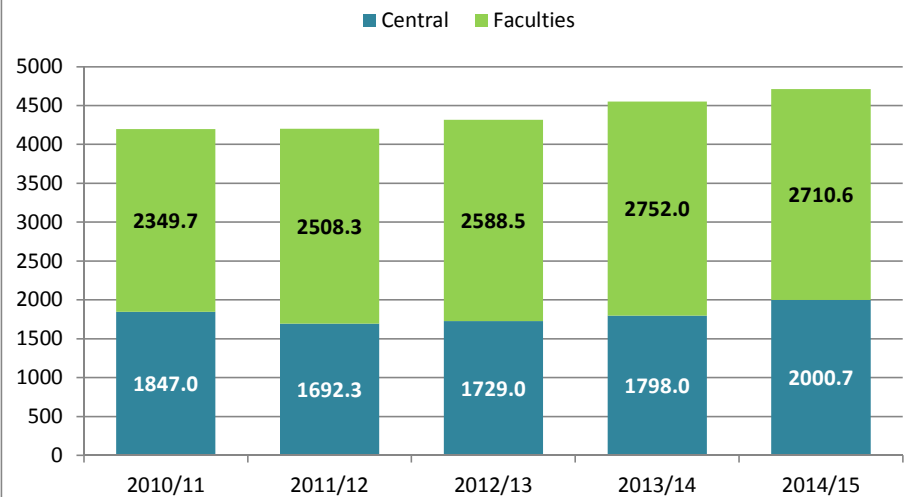
### PSS staff FTE 2014/15



### PSS pay costs (£m) 2014/15



### PSS staff FTE



Note: 2014/15 figures demonstrate a reduction in Faculty PSS CompIT staff of 123 FTE, and a corresponding increase in central PSS CompIT of 129 FTE, reflecting the restructure in IT Services. This movement is not reflected in the 2014/15 pay costs.