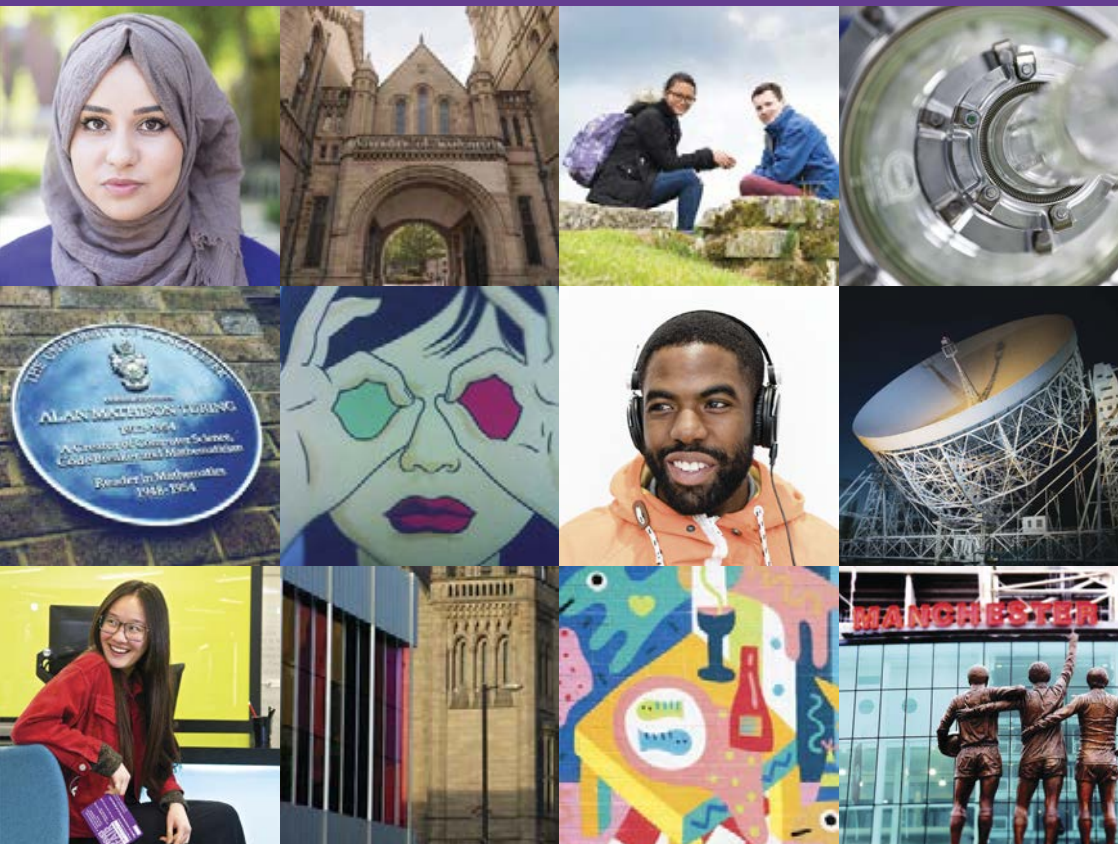


MANCHESTER
1824

The University of Manchester

POSTGRADUATE PROSPECTUS 2015



www.manchester.ac.uk/postgraduate

It all adds up

1,000,000,000

Pounds to be invested in the University by 2020

280,000,000

Pounds of external research funding

4,000,000

Books and manuscripts in our libraries

270,000

Alumni across 180 countries

11,000

Postgraduate students

400

Degree programmes

25

Nobel Prize winners

1

Choice: The University of Manchester

You're better connected at Manchester

With a breadth of research activity that's unrivalled in the UK, we work across disciplines and beyond the University, connecting the brightest minds to find innovative solutions to the world's greatest challenges.

We offer pioneering taught courses that draw upon our world-leading research and our strong links to global industry. You'll quickly develop skills, knowledge and experience that will make employers sit up and listen.

Connect with Manchester and the world will connect with you.

COME TO AN
OPEN DAY
OR VISIT US

www.manchester.ac.uk/masters-open-days

www.manchester.ac.uk/postgraduate-research-open-days

If you require a copy of this prospectus, or certain sections of it, in an alternative format, please contact us:

tel +44 (0)161 275 4740
www.manchester.ac.uk/postgraduate

CONTENTS

Welcome to The University of Manchester	2
The Manchester experience	4
Standing on the shoulders of giants	6
Our research pedigree	10
Our research impact	12
Taking control of your future	16
Our campus	20
Accommodation	26
The city of Manchester	28
Postgraduate taught master's courses	32
Postgraduate research programmes	40
Support	50
Applying to Manchester	52
Our courses and programmes	54
Subject areas	56
Course and programme index	125
Maps	134

We offer taught masters courses and research programmes in more subjects than any other UK university.

For each subject we provide contact details so you can find the most up-to-date information. You can also speak to us online at:



/AdmissionsUoM



@AdmissionsUoM

Welcome to The University of Manchester

Our work makes an impact on real lives. Studying at Manchester gives you the chance to make a difference, both during your studies and in your future career. We'll give you an amazing university experience that's rooted in a rich heritage, yet firmly focused on the future.

We work closely with organisations ranging from government bodies to global businesses, from local health services to registered charities. From these links spring unique opportunities: we're able to deliver courses informed by the latest expertise and research programmes that have greater, more immediate effect.

WE MAKE THINGS HAPPEN

We turn enthusiasm into achievement and ground-breaking theory into cutting-edge practice. That's why we're at the forefront of the search for solutions to some of the world's most pressing problems – from cancer to climate change, from poverty to sustainable energy. We've been accomplishing feats of global significance for more than 180 years, from inventing the modern computer to giving the world graphene – the two-dimensional 'wonder-material' that is one atom thick, but 200 times stronger than steel.

WE MAKE A DIFFERENCE

We take our social responsibilities seriously. Through our teaching, research and numerous public events and activities, we contribute to the social and economic wellbeing of local and global communities.

WE KNOW WHERE WE'RE GOING

Part of the prestigious Russell Group of universities, we enjoy an international reputation for our pioneering research and innovation. We're on the way to achieving our target of becoming one of the world's top 25 universities, and our plans are backed by the biggest investment programme ever seen in UK higher education – we've already invested more than £750 million in buildings and facilities since 2004 and now we're putting £1 billion into further teaching and student facilities.

WE'VE GOT THE PEOPLE TO DO IT

We have more Nobel laureates on our staff than any other UK university, and count 25 Prize winners among our current and former staff and students. Could you be number 26?

WE GIVE YOU EXCELLENT PROSPECTS

Whether you're a committed researcher wanting to further the human quest for knowledge, a career-focused professional seeking a specialist qualification, or an enquiring mind with a burning enthusiasm for higher learning and understanding, a postgraduate degree at The University of Manchester will help you to realise your ambitions. Our problem-based approach to learning will inspire you to think critically and creatively, cultivating your independence and making you more attractive to recruiters. Our graduates are consistently among the most targeted in the UK by leading employers.

WE OFFER MUCH MORE THAN A DEGREE

At Manchester you'll find the broadest range of options outside of your studies for developing your interests and broadening your experience, including outstanding sports facilities, skills-development programmes and mentoring. You could make a difference through volunteering opportunities offered by the Students' Union and through our dedicated community engagement team. We'll also support you if you want to take part in or start up a social enterprise.

WE'D LOVE YOU TO JOIN US

Join our postgraduate community and start making your impact on the world.

FIND OUT MORE

www.manchester.ac.uk/discover

“This is without a doubt the best environment for pursuing answers to the questions that interest me most. It’s one of the leading institutions in the world, with a clear dedication to supporting innovative research.”

Cliff Workman

PhD Medicine and President’s Doctoral Scholar Student



The Manchester Experience

MANCHESTER MADE THEM

Students and staff share their Manchester experiences throughout this prospectus.

Professor Dame Nancy Rothwell

President and Vice-Chancellor
of The University of Manchester
page 8

Moyin Kwok

Recruitment and Marketing Coordinator,
Faculty of Life Sciences
page 18

Faith Nanyonga

MSc Student in Medical Microbiology
page 38

Omar Abdel Rehim

Electrical and Electronic Engineering
PhD student
page 48

Julia Kolkmann

PhD English Language Student
page 80

Dr Karen Piper-Hanley

Lecturer in Molecular Medicine
page 104

Professor Sir Kostya Novoselov

Physics and Astronomy research associate
page 114

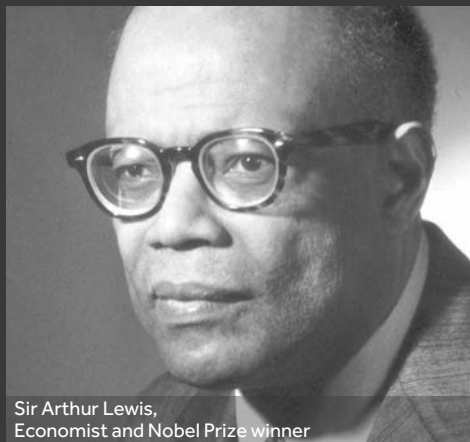




Standing on the shoulders of giants



Christabel Pankhurst,
Law graduate and suffragette campaigner



Sir Arthur Lewis,
Economist and Nobel Prize winner

Our story is one of world firsts and brilliant discoveries. In total, 25 Nobel Prize winners have worked or studied here.

Manchester is the birthplace of nuclear physics, where Ernest Rutherford first split the atom. The world's first stored-program computer was developed here, and Alan Turing pioneered artificial intelligence during his time at the University.

Our observatory at Jodrell Bank is home to the iconic Lovell Telescope: the biggest telescope of its type in the world when it was built, and set to be the central control hub for the world's largest radio telescope – the Square Kilometre Array.

Economist Arthur Lewis became the first black professor at a British university when he joined us, and published his most influential works while at Manchester.

Christabel Pankhurst, a Manchester law graduate unable to enter the profession on account of her sex, became one of the suffragette movement's most committed campaigners.

And we're still producing notable postgraduate alumni today. These include: Tesco Chairman Richard Broadbent; Oxfam's Humanitarian Director Jane Cocking; TV/film comedy writers Jesse Armstrong and Sam Bain; Ann Coffey, Labour MP for Stockport; Professor Brian Cox, physicist and TV presenter; and HE George Maxwell Richards, the fourth President of Trinidad and Tobago.

With a degree from The University of Manchester you'll become part of this distinguished club, whose collective achievements as academics, business leaders, social reformers, entrepreneurs, politicians, creative artists, policy makers and more have helped shape the history of the modern world.



Alan Turing,
Artificial intelligence pioneer



“My career might have gone quite differently if I’d not been at Manchester. There’s a good ethos throughout the University of interdisciplinary collaboration.”

PROFILE

Professor Dame Nancy Rothwell

President and Vice-Chancellor
of The University of Manchester

9

Leading from the front

Professor Dame Nancy Rothwell is President and Vice-Chancellor of the University, and a distinguished life scientist with a specialism in neuroscience.

Born and educated in Lancashire, Dame Nancy joined The University of Manchester in 1987. She studied and worked in London for a while, before returning to the north west of England. She holds various senior positions, including President of the Society of Biology, Co-Chair of the Council for Science and Technology and a non-executive directorship at AstraZeneca.

"From my experience, some other major cities are not particularly friendly – at least, not like Manchester. There's a 'go and do' attitude at the University, but there's also a strong sense that values matter, integrity matters here. Manchester has made me less selfish.

"The University is very strong in life sciences; by national measures, it's certainly in the top three in the UK. It's all integrated, with fabulous new buildings and fantastic equipment. From a researcher's perspective, it's ideal, as you can easily work across disciplines with experts in so many different areas.

"People think of science as being quite lonely, but it's certainly not at Manchester. In fact, it's very sociable, because you're always working in teams. Our postgraduates can both carve out their own niche and benefit from a supportive network of colleagues."

Our research pedigree

We are recognised at a global level for the quality and volume of our pioneering research. The breadth of our research activity outstrips that of any other UK university and in 2012/13 we attracted more than £280 million in external research funding.

In the last Research Assessment Exercise (RAE 2008) an impressive 65% of our research activity was rated 'world-leading' or 'internationally excellent', with most of the remainder judged to be of a quality that is 'recognised internationally in terms of originality, significance and rigour'. Our research quality will again be assessed this year in the new Research Excellence Framework, for which we have submitted a range of case studies showcasing the breadth and depth of our research impact. See page 12.

WHAT OUR RESEARCH CREDENTIALS MEAN FOR YOU

Whether studying for a taught master's or a research degree, you'll be directly involved with cutting-edge research.

You'll benefit greatly from our continuous investment in the best research facilities and a dynamic research culture that encourages innovative, cross-disciplinary collaboration. Our courses and programmes are led by distinguished tutors and fellow researchers working at the forefront of their disciplines, ensuring that your qualification comes with a reputation that will open doors across the world.

Close industrial partnerships with organisations from many sectors inform our research and postgraduate programmes, providing exceptional opportunities for research with commercial applications, as well as the chance to develop business and entrepreneurial skills and experience relevant to your future career.

A PROACTIVE, COLLABORATIVE ENVIRONMENT

At Manchester we're committed to breaking down barriers and introducing fresh, interdisciplinary ways of working, opening up exciting new areas of study and discovery.

There are four Faculties at the University: Engineering and Physical Sciences, Humanities, Life Sciences, and Medical and Human Sciences. As well as the research activity that takes place in these, we coordinate interdisciplinary research, both in specialist institutes and in cross-University networks, undertaking pioneering research in areas including policy development, humanitarian response, nuclear power and cancer.

We also work with other universities on a range of initiatives. We are part of the N8 Research Partnership with seven other northern universities, working together in areas ranging from nanotechnology to the impact of the arts and humanities. Other examples of our collaborations include:

- the Northern Aerospace Technology Exploitation Centre (NATEC), which aims to help to maintain and enhance the competitiveness of the UK aerospace industry;
- CHEM21, Europe's largest public-private partnership dedicated to the development of manufacturing sustainable pharmaceuticals; and
- FLITES, a £2.7 million research project to create a key component in reducing jet engine emissions.

“The research environment in Manchester is just excellent. The key to successful research is collaboration, and we’re in a perfect place to take advantage of what each partner has. Students go right to the forefront of their field.”


Dr Qing-Jun Meng

Medical Research Council Research Fellow,
Faculty of Life Sciences

FIND OUT MORE

www.manchester.ac.uk/eps/our-research
www.manchester.ac.uk/humanities/research
www.manchester.ac.uk/life/research
www.manchester.ac.uk/mhs/research

Our research impact



It's in our DNA to find new ways to do things at Manchester.

Whether we're finding the energy solutions of tomorrow, influencing the national nuclear agenda, exploring the diverse potentials of a new wonder-material, or spearheading the fight against cancer, Manchester researchers make a difference to economies, societies and cultures across the globe. Here are just a few examples of the impact our academics are having on the world today.

FIRST GRAPHENE PRODUCTS HIT THE MARKET

Manchester researchers Sir Andre Geim and Sir Konstantin Novoselov won the Nobel Prize in 2010 for groundbreaking achievements regarding graphene. This material's remarkable properties (strong, light, near-transparent, and an excellent conductor of heat and electricity) make it ideal for applications in electronics, medicine, renewable energy and chemistry. Products to date include graphene-based touch screens and a graphene-based conductive ink for printed electronics; around 8,000 graphene-related patents indicate many more products to come.

MULTILINGUAL MANCHESTER

We're examining Manchester's language diversity - the challenges it poses to community cohesion and the opportunities it offers to increase cultural awareness and economic growth. Involving students directly in our research, we've created the world's largest online archive of reports on urban multilingualism. Many local institutions such as hospitals, schools, and community organisations have consulted this resource for information on how to improve the delivery of public services to minority communities.

AIDING DRUG DISCOVERY WITH NEW MOLECULAR TECHNOLOGY

Traditional methods of determining a drug's three-dimensional molecular structure can take years to achieve results. But Manchester researchers have developed an improved method using nuclear magnetic resonance data, which determines the confirmation of drugs within weeks. Spin-out company C4X Discovery secured several million



pounds in private investment, and now provides paid services to several of the world's pharmaceutical and biotechnological companies.

BRINGING THE SKIES DOWN TO EARTH

Our Jodrell Bank Discovery Centre attracts 150,000 visitors, including 15,000 schoolchildren, each year. Its public engagement programme – which includes astronomy exhibitions, schools programmes, public lectures, mainstream media involvement and a nationally acclaimed summer festival of music and science – is estimated to have brought £8 million to the local economy over the last three years, and created 26 new jobs.

PRESERVING WILDLIFE, PROTECTING CULTURE

The reconstruction and expansion of the Timburi-Cocha Research Station in Ecuador, funded by researchers from Manchester, has provided employment for local people and facilitated

biodiversity research in an area of high endemism. Vital discoveries of new species and the recording of local wildlife have armed the local government with the evidence needed to discourage oil and gold companies from investigating the region.

INCREASING ACCESS TO PSYCHOLOGICAL TREATMENT

Manchester researchers' work on cognitive behavioural therapy has shaped government policy on mental health. More than one million people have benefited from the Improved Access to Psychological Therapies initiative, set up in line with our recommendations. Ground-breaking projects include the first guided self-help clinics in Manchester, and telephone-delivered therapies that have helped to target hard-to-reach groups. More than 2,000 mental health practitioners and therapists have been trained, and we have helped companies and charities such as BT and Anxiety UK to develop their telephone and Skype services.



INVESTING CHOCOLATE WITH SOCIO-ECONOMIC VALUE

Cadbury commissioned Manchester researchers to investigate the social and economic sustainability of cocoa production. Our findings led to major organisational changes: Cadbury have since certified their main products as Fairtrade, the Cadbury Cocoa partnership invested £45 million to support cocoa growers over the next decade, and Cadbury committed £3 million in social premiums to a Fairtrade-certified cooperative. Nestlé and Mars soon followed suit; together these three companies have increased Fairtrade chocolate sales threefold since 2008.

INHALED THERAPIES FOR AIRWAY DISEASES

Manchester research has led to safer, more effective and better-targeted treatments for patients suffering from asthma and chronic obstructive pulmonary disease. One study on house dust-mite avoidance is estimated to have prevented patients and health services worldwide from wasting billions

of pounds on asthma treatments that were shown not to work. Professor Ashley Woodcock's work with the International Panel for Climate Change, phasing out CFCs from inhalers, secured him a share in the 2007 Nobel Peace Prize in recognition of the global environmental impact of his research.

ARTIFICIAL LIGHT WITH BIOLOGICAL RHYTHM

It has long been known that light activates specific receptors in the eye called rods and cones. However, neuroscience researchers at Manchester have now shown that a third type of light receptor is responsible for important sub-conscious responses to light, including synchronising the body's natural rhythms to the light-dark cycle. Unnatural light can have a profound influence on health, productivity and well-being. Our researchers are working with lighting manufacturers to develop artificial lights that will activate these receptors and make them more suitable for our biological needs.



IMPROVING EMERGENCY AID WORLDWIDE

Manchester researchers provided a new perspective on emergency aid by looking at the historical roots of humanitarian responses. Findings have influenced how humanitarian efforts and technologies are organised and carried out today; they also led to the creation of our Humanitarian and Conflict Response Institute, and developed the International Emergency Trauma register for UK health professionals willing to assist in overseas emergencies.

TRANSITIVE TECHNOLOGY FOR BINARY TRANSLATION

Once described by Steve Jobs as "The most amazing software you'll never see," Rosetta – a binary translation software developed by Manchester spin-out company Transitive – was used in approximately 25 million Mac computers between 2006 and 2009, during which period sales of Apple computers doubled. The Transitive software supported the transition by Apple to Intel processors by allowing existing Mac software to run on their new Intel-based computers.

CUTTING DRUGS COSTS FOR NHS PATIENTS

Manchester researchers have helped to cut the cost of prescription drugs for thousands of NHS patients. We are at the forefront of UK research into access to medicines and the impact of prescription charges. This has led to a key policy change on how people pay for medicines, including the introduction of a new monthly direct-debit scheme and the launch of a three-month certificate to deal with shorter-term problems.

Taking control of your future

The challenges of a postgraduate degree will be a significant step up from your undergraduate experience.

You'll develop evidence to show you can be creative, determined and can use your initiative, and you'll hone your critical-thinking skills so that you can construct compelling arguments from a mass of information.

But we'll give you even more than this. Make the most of the opportunities at Manchester and set yourself on course for a future of success.

CAREERS SERVICE

Our Careers Service really understands postgraduates. We offer you tailored, one-to-one support from career consultants who regularly work with postgraduates, and specialist advice for postgraduates on our careers website. You can attend postgraduate careers talks and events, and keep up-to-date with relevant news and views on our postgraduate careers blog and Twitter feed. www.manchester.ac.uk/careers/pg
[@ManPGCareers](http://www.manunicareersblog.com/category/postgraduate)

INSPIRING ACADEMICS

If you aspire to become an academic, nothing beats working with role models whose research leadership underpins their teaching and supervision. Visit our award-winning website 'An Academic Career' to hear their advice and plan your future. www.manchester.ac.uk/academiccareer

COMMUNITY ENGAGEMENT

As part of an international community in a city with a history of revolutionising the world, you'll be able to immerse yourself in the possibilities this affords. Apply your skills by volunteering, making a difference to yourself and to others, or communicate your passion for your subject via our public engagement programmes.

Employers who look for that 'something special' will really start to notice you.

www.careers.manchester.ac.uk/experience/volunteering

www.engagement.manchester.ac.uk

www.manchesterstudentsunion.com

ENTREPRENEURSHIP

If you've got a big idea, we can help you get it off the ground. From our intellectual property organisation UMIP, to the resources of Manchester Business School, we offer comprehensive support to help student entrepreneurs bring their ideas to the marketplace. You could even compete for funding in enterprise competitions such as Venture Further, which offers £10,000 to the winning entry. mec.portals.mbs.ac.uk/Enterpriseactivities/Competitions.aspx
www.mbs.startupdonut.co.uk
umip.com/initiatives

ALUMNI

When you join us, you join a vibrant, global University whose networks are available to you both as a student and later as a graduate. With over a quarter of a million alumni worldwide, we have the largest alumni body of any UK campus-based university. Our Alumni Association, which you automatically join upon graduation, will continue to add value to your degree by providing opportunities to connect with fellow alumni socially, offering new learning opportunities and career-focused events and initiatives, and updating you on Manchester's groundbreaking research and global impact. You could even make a difference to the lives of students following in your footsteps, through mentoring and other volunteering opportunities. www.manchester.ac.uk/alumni

ACCESS TO EMPLOYERS

Employers from diverse industries all over the UK and beyond target our graduates. More than 600 recruiters visit our campus and our recruitment fairs each year, while employers and alumni take part in our mentoring programmes, careers information events and online activities.

CAREERS

“The Careers Service was a great help throughout my university life. Beyond the CV support and workshops to help prepare for job applications, the main benefits were that it really helped me to develop the skills to face real-life job challenges. Taking the opportunity to experience mock interviews with a careers consultant will give every student much increased confidence and help to get over the fears of a real-life interview.”

Shilpi Bhatia


MSc Finance (2009)

Now Finance Analyst, Ministry of Finance, India



FIND OUT MORE

www.manchester.ac.uk/eps
www.manchester.ac.uk/humanities
www.manchester.ac.uk/ls
www.manchester.ac.uk/mhs



“The volunteering and placement opportunities are so wide here. I was in a good position – as my tutors and mentors were based in the arts and cultural sector, they were very happy to open doors for us.”

PROFILE

Moyin Kwok

Recruitment and Marketing
Coordinator, Faculty of
Life Sciences

19

A new home, a new career

Moyin came to Manchester from Hong Kong to study for a master's in Art Management. She went on to complete an internship in the Directorate for the Student Experience, a placement she won through the Manchester Graduate Internship Programme, before securing a permanent role in the Faculty of Life Sciences.

"A big focus of my master's was on networking and getting to know organisations in the local cultural scene. I'm particularly lucky because I got a placement at the Whitworth Art Gallery working directly under the Head of Development, who gave me many chances to meet people from different organisations. Local practitioners from the Arts Council were also on the course, which was a sign of confidence in the course in terms of employability and practicality.

"I chose Manchester because it's a vibrant, affordable city. I had offers from institutions in London, but some of my friends from Hong Kong who had done similar programmes there felt it's too busy a city and it took some time to get used to life there. I love Manchester's Chinatown – I can get Cantonese food there that's sometimes better than I would get in Hong Kong!

"Manchester should be really proud of its cultural diversity and inclusivity. The local friends I've made are so warm and welcoming – they even made me a cake for my birthday – as are the staff and students I've studied and worked with. I think this is really special and something that you don't get elsewhere.

"The Careers Service really helped me with writing applications and refining my job search. I consulted them when I began applying for placements through the Manchester Graduate Internship Programme, and I think this helped me get a high number of interviews. I have since joined the Faculty of Life Sciences to work on international marketing. I feel like I'm realising my dreams."

20

THE UNIVERSITY OF MANCHESTER
POSTGRADUATE PROSPECTUS 2015

Our campus



Grand Victorian buildings sit alongside ultra-modern facilities

The University of Manchester is large, yet compact enough to give the best of both worlds: city life and a campus community. Being close to the city centre and all of its amenities allows students, staff, businesses and the wider public to connect and collaborate. On campus, everything is within walking distance, or linked via a free bus service. Think of us as a village within a city.

LEARNING FACILITIES

Libraries

Discover The University of Manchester Library: one of the best-resourced academic libraries in the UK and one of only five National Research Libraries in the country. Postgraduate students can get specialist advice from a dedicated team on bibliometrics, impact analysis, research data management, open access publishing, literature reviews and more. The Library also runs a useful skills programme for researchers.

You'll find subject-specific and tailored services at specialist libraries across campus, and one of the world's finest collections of rare books and manuscripts in the city-based John Rylands Library.

www.manchester.ac.uk/library

4,000,000+ printed books and manuscripts
414,000 ebooks
29,000 electronic journals
100s of online databases

IT services

We provide research students with access to two of the largest university supercomputers and the largest server farm in the North West of England. Research students enjoy access to national datasets, visualisation and high-performance computing, while all students have 24/7 access to computers in our Alan Gilbert Learning Commons and Owens Park halls of residence, dedicated IT Service Desk. We also guarantee support, and a University email account and personal file storage area.

www.manchester.ac.uk/itservices

iManchester **smartphone app**
 international eduroam network access
 cross-campus **Wi-Fi**
 high-speed Internet in halls of residence
24/7 telephone support
3,200+ student PCs

Alan Gilbert Learning Commons

Made for students, in consultation with students, this ultra-modern building is home to the most up-to-date IT facilities, flexible learning spaces for group study and independent learning, and a host of student-centred services. The building is designed to the highest standards of sustainability; even the lighting adjusts automatically, according to the level of natural light and occupancy. It is the UK's first digital library and won the Guardian Award for Best Facilities project.

£24 million investment in facilities
 space for **1,000+** students
30 bookable rooms
 multiple flexible pods and spaces

SPORT AND ACTIVE LIFESTYLES

At Manchester there are plenty of ways to stay fit and healthy - and give your brain cells valuable downtime. Our organised activities suit all abilities and fitness levels, from national and campus leagues in various sports, to non-competitive health, fitness and well-being classes. You can also enjoy discounted student fees and memberships at excellent sports centres, and specialist facilities for swimming, football, cycling, tennis, squash, athletics and more.

You can gain valuable experience, get coaching qualifications, develop personal skills and meet new people via our sports volunteer scheme. We also support Manchester's very best student athletes with a financial award and access to support services, such as physiotherapy, via our sport scholarship.

www.manchester.ac.uk/sport

10th in the British University and Colleges Sport league
6 Campus leagues
 Volunteering **opportunities** in Sport
 Access to **27** full-size pitches at one of the UK's biggest football facilities

STUDENTS' UNION

At the heart of our campus, this democratic, student-led space is the largest of its kind in the UK. From grabbing a bite to eat, to securing part-time work; from seeing your favourite band, to campaigning for international human rights; you'll find everything you need to get the most from your time at Manchester in your Students' Union.

Postgraduate student representatives in each Faculty ensure you can make your voice heard at the University. Students are the decision-makers at the Union, and four times a year we hold open assemblies to discuss ideas that students submit. Professional advisers, who are independent of the University, also offer help with academic and personal issues, as well as advice on student finance, benefits and general hardship.

www.manchesterstudentsunion.com

Large, welcoming postgrad society
300+ student societies
Four popular music venues
Cafe, shop and bar

CULTURE ON CAMPUS

Be inspired as well as educated, with visitor attractions open to students and the public alike.

Manchester Museum: brings ancient worlds to life and hosts a constantly rotating programme of exhibitions.

Whitworth Art Gallery: one of the city's premier art spaces located in nearby Whitworth Park.

The Martin Harris Centre for Music and Drama: a performance space for music, drama and other arts.

Jodrell Bank Discovery Centre: fun, engaging exhibitions and activities on astronomy and space physics, based on the Cheshire site of the iconic Lovell Telescope.

A SUSTAINABLE CAMPUS

We take environmental sustainability seriously at Manchester, with several award-winning practices. Among many things, we provide excellent facilities for our cyclists, subsidise hybrid electric campus buses and support local suppliers. We have set ourselves several environmental sustainability targets and encourage everybody at the University to work together to ensure we meet them.

www.manchester.ac.uk/think

Energy-efficient new buildings
Monitoring of energy usage
Cross-campus recycling facilities
Fairtrade products in **cafes and shops**



“The diversity of the people, the culture and the social scene really make Manchester a great place to live. And, especially in comparison to London, it’s very reasonably priced.”

Karl Collins
PhD Organic Chemistry



FIND OUT MORE

www.manchester.ac.uk/university



“My lab has expertise in all aspects of my discipline and the teaching is excellent. You’re not thrown in at the deep end with no help; there’s a lot of guidance along the way.”

PROFILE

Russell Craddock

Medical PhD and Research Impact
Scholarship student

25

Life beyond labs

State-of-the-art facilities and a sterling reputation lured Russell to Manchester as an undergraduate – and made sure he stayed. The university's bustling social scene in a city where he "never gets bored" proved the icing on the cake.

"I chose Manchester because it's one of the world leaders in medical biochemistry – and I'm still here for the same reason. I loved my undergraduate degree, but then I did my master's and that gave me a real taste for scientific research. After that I knew I wanted to do a PhD.

"I took a year out working as a lab assistant, and then came back to do research in inflammation and repair. It's essentially a tissue engineering project looking at using stem cells to grow intervertebral discs. Around 40 per cent of bad backs are caused by damaged intervertebral discs and it's a massive problem, which costs billions to treat.

"My PhD is fully funded by Manchester's Alumni Association, which offered me a Research Impact Scholarship – and I was also lucky enough to get a President's Doctoral Scholarship Award. It not only helps with living costs, but also gives me access to special training courses and networking events, which are hugely useful.

"Outside my studies, I've been chair and secretary of the Faculty of Life Sciences Society, and I'm now the chair of the Faculty of Human Sciences Graduate Society. We put on a range of events, including an 'elevator pitch' series at local secondary schools where we have a minute to explain our research – about the same time it would take an elevator to go up a 20-storey building. It's a bit scary, but we're trying to remove the stereotypes around science being geeky to encourage young kids to go into it.

"The fact is we don't just stay in labs being boring! I've had a great time here and I wouldn't change a thing about it."

Accommodation

We offer a huge choice of accommodation, including University halls of residence and private housing. We'll do everything we can to help you find somewhere to live where you'll feel right at home.

UNIVERSITY ACCOMMODATION

We manage approximately 7,900 rooms for student accommodation, almost all of which are based within two miles (three kilometres) of our campus. We reserve some residences exclusively for postgraduates; in others we house graduate students together. You'll find housing to suit all tastes, from modern flats to traditional halls of residence.

Your options include:

- postgraduate-only accommodation;
- single or mixed gender accommodation;
- catered or self-catering facilities;
- en suite or shared facilities;
- specially adapted rooms for students with disabilities;
- a limited supply of accommodation for families and partners.

COSTS

In 2014/15, representative costs for University accommodation range from:

- £101 per week for a single self-catering room with shared facilities (Whitworth Park)
- £127 per week for a single self-catering room with en-suite facilities (George Kenyon)
- £111 to £125 per week for a single room with shared facilities in a catered hall (Ashburne Hall)

ACCOMMODATION GUARANTEE FOR INTERNATIONAL STUDENTS

If you are based outside of the EU, we can guarantee you a place in a hall of residence for the full duration of your course, provided you:

- come to university alone;
- firmly accept a place here by 31 August of your year of entry;
- apply for accommodation by 31 August;
- re-apply for accommodation in subsequent years by the deadline and for the full academic year.

If you do not meet the conditions of our guarantee, you may still apply for University accommodation; however, please note that we may not be able to offer you a room immediately.

PRIVATE ACCOMMODATION

Manchester has plenty of private accommodation for rent. Contact Manchester Student Homes for information about properties available, plus useful general housing advice. Owned jointly by the Manchester universities, this is the city's only housing bureau that advertises University-approved accommodation.



LIVING OFF CAMPUS

Many postgraduate students live at home while they study at Manchester – but you can still get involved with student life.

If you are keen and proactive, you can get involved in plenty of University and Students' Union activities

“Accommodation is fairly cheap in Manchester, and where I live there is a very reliable transport network.”

Nhamo Chaukura
PhD Materials Chemistry

and societies, making friends outside of your degree programme and ensuring you benefit from everything that Manchester has to offer.

FIND OUT MORE

www.manchester.ac.uk/living-at-home

Contact our Accommodation Office:
tel +44 (0)161 275 2888
accommodation@manchester.ac.uk
www.manchester.ac.uk/accommodation

Contact Manchester Student Homes:
tel +44 (0)161 275 7680
manchesterstudenthomes@manchester.ac.uk
www.manchesterstudenthomes.com

The city of Manchester



“Don’t talk about what you are going to do, do it. That is the Manchester habit.”

Sir Edward Abbott Parry
Judge and dramatist (1912)

Manchester is the birthplace of the Industrial Revolution and its strong, pioneering character endures today – only now its achievements also include shaking up the global music scene, nurturing artistic creativity and hosting international sporting events.

With events, facilities and attractions to suit every lifestyle, Manchester is lively, culturally diverse and easy to enjoy on a student budget. Never content to live on past glories, this is a city that looks to the future with a passion for progress – and invites you to share in its vision and vitality.

ART AND CULTURE

Manchester enjoys a thriving cultural scene, where independent creative spirits find their niche and history comes to life in thrilling and innovative forms.

Annual festivals celebrate everything from contemporary literature to gay rights. An impressive range of museums and galleries enable you to browse modern art and classic masterpieces; explore how science and industry shaped modern society, and how war shapes people's lives; discover the campaign for social justice and the history of football. At the University itself you can explore ancient worlds at our Manchester Museum, or discover 'art in a park' at our Whitworth Art Gallery.

MUSIC AND THEATRE

Manchester embraces all aspects of music and drama; here, independent creative spirits find their niche and international productions pause to perform.

See some of the world's biggest bands and DJs perform in popular arenas, or discover new acts at more intimate venues. Enjoy classical performances by world-famous orchestras, or see new musical prodigies perform in innovative, evocative style. From rousing opera arias to West End musicals, world premieres to experimental theatre, Manchester unites all forms of performance, old and new.



SPORT

Coming first is second nature in Manchester. It's long been synonymous with football, thanks to Manchester United and Manchester City, but there is much more to discover here.

Watch the cream of European rugby, or try out Britain's first indoor Olympic cycling track. See international cricket contests, or learn to ski and snowboard on the world's largest indoor ski slope. Attend major squash, tennis and netball events, or sign up for the UK's favourite 10k run.

BUSINESS

A bustling commercial centre, Manchester works as hard as it plays. Creativity complements industry, and burgeoning entrepreneurs thrive alongside established multinational businesses.

This is the perfect spot for you to connect with potential future employers from all sectors, gaining an insight into possible careers – or perhaps work with commercial giants on collaborative research opportunities. The city is home to the UK's largest chamber of commerce, thriving digital, creative and broadcast sectors, well-regarded service and knowledge-based industries, and much more.

FOOD AND DRINK

With so many cultures rubbing shoulders with each other, it's no surprise that Manchester has a great reputation for food and drink. You'll find sumptuous cuisine from practically every nation here, and to suit any budget.

From upmarket restaurants to bohemian bars, Asian supermarkets to independent delis, morning lattes to late-night takeaways, you'll find much to tantalise your tastebuds, with places to eat, drink and be sociable across the city campus, and in every student residential area.

SHOPPING

Manchester is a shopper's paradise. From trend-setting independents to big-name brands, you'll find fashions, essentials and much more.

Browse the best of the British high street, from premium department store Harvey Nichols, to budget-conscious Primark. Investigate the countless specialist traders of the Northern Quarter, selling everything from vintage clothing and second-hand music to artwork and craft supplies; or visit the Trafford Centre, the UK's second largest shopping centre, with hundreds of shops and eateries under one roof.

COST OF LIVING

Relative to other UK cities, and to many cities across the world, Manchester is an affordable place to live. We consistently rate highly in student living surveys – something to bear in mind as you calculate the cost of essentials.

Estimated living expenses per postgraduate year (51 weeks)*	
Accommodation (average cost for self-catering hall)	£5,925
Meals	£2,025
Transport	£685
Books and stationery (depending on your course, and if you buy new or second-hand)	£505
Clothes (including warm clothing and footwear)	£505
Miscellaneous	£1,930
TOTAL	£11,575
<i>*Estimated costs for the 2014/15 academic year</i>	

“Manchester changed the world’s politics:
from vegetarianism to feminism to trade
unionism to communism.”

Stuart Maconie

Pies and Prejudice: In Search of the North



FIND OUT MORE

www.manchester.ac.uk/manchester

Postgraduate taught master's courses

Like most potential postgraduate students, you probably have a clear idea of what subject you're interested in, but you may be less certain of the way you want to study it, and to what level.

Taught postgraduate courses include classes run by Manchester academics and a programme of assessed work. They are particularly suitable if you wish to gain a broad, deep and specialised knowledge of your chosen subject area, without undertaking the extensive autonomous research required by postgraduate research degrees.

“At Manchester we pride ourselves on our heritage of innovation, intellectual exploration and social responsibility. We work with our students as valued partners in the ongoing development of our diverse community, encouraging and enabling them to confront their own civic values and responsibilities as local and global citizens, and applying this to the context of their future professional lives.”

Professor Clive Agnew

Vice President for Teaching, Learning and Students



WHY MANCHESTER?

Providing intellectual focus and intensity at the cutting edge of your chosen subject, a taught postgraduate qualification from Manchester can reveal many doors to a new or advanced career path. However, it is the wider opportunities for personal development and extensive careers support that we offer you outside of your course that can make these doors swing wide open.

As a Manchester postgraduate, you'll be equipped to manage any intellectual and professional challenge you might face. By encouraging your independence, creativity and responsibility, we aim to enable you to manage complex and abstract ideas and adapt your knowledge and skills to unpredictable professional contexts, so that you can undertake the next stage of your career as a valued professional.

www.manchester.ac.uk/study/masters/why-manchester

TYPES OF TAUGHT COURSES

Taught master's degrees

These courses usually last for 12 months full-time, or 24 months part-time, making them more intensive, efficient and cost-effective than the two-year full-time options offered in most other countries.

Taught master's degrees usually involve two semesters of classes and assessed work, followed by four or five months' research, culminating in a dissertation or project. The balance of taught and research elements and the methods of assessment vary from course to course.

Taught master's degrees at Manchester include:

- **Master of Arts (MA)**
- **Master of Business Administration (MBA)**
- **Master of Education (MEd)**
- **Master of Science (MSc)**
- **Master of Law (LLM)**
- **Master of Music (MusM)**

Our MBA lasts 18 months full-time and up to five years part-time.

Our **Master of Research (MRes)** is slightly different, enabling you to undertake extensive research training and subject-specific advanced learning with a view to proceeding to doctoral research. See 'Postgraduate research programmes' for details (page 40).

Postgraduate diplomas and certificates

Diplomas usually last nine months, and certificates usually last six months. Many courses cover general areas of study; others are more specialised, such as the Postgraduate Certificate in Education (PGCE). They can be structured in a similar way to master's courses, but without the need for a dissertation; or, as with the PGCE, they may be specifically vocational.

FLEXIBLE STUDY OPTIONS

Full-time/part-time

Most of our postgraduate taught students study on a full-time basis; however, it may be possible to study on a more flexible part-time basis.

International applicants from non-EU countries should note that the terms of entry into the UK normally prevent you from registering for a course on a part-time basis.

Distance learning

Some of our master's courses are available via distance learning (also known as distributed learning or e-learning). Distance learning allows you to progress via self-study using printed materials and web-based resources.

At Manchester we invest heavily in online and interactive technologies to allow you to connect with staff and fellow students, and enjoy the same support as you would on campus.

Journey to a taught master's course

1. Choose your course

Browse this prospectus for an overview of subject areas, and visit our website for full details of all our taught postgraduate courses: www.manchester.ac.uk/study/taught-masters

1

2. Check our entry requirements

The qualifications, skills and qualities you need for postgraduate study at Manchester vary from School to School. See our website for the full entry requirements for your course. See page 52 for more about entry requirements.

2

3. Check for a closing date

Most of our master's courses have no official closing dates for applications; we simply advise you to apply as soon as possible. However, there are exceptions. If a particular master's course has a closing date for applications, we will state this on the individual course pages on our website.

3

4. Apply online*

You must apply to your taught master's course via our online application form: www.manchester.ac.uk/study/masters/admissions/apply

4

The exception is PGCE applications, which must be made via UCAS: www.ucas.com/teacher-training

5. Consider funding options

If you intend to apply for funding, make sure you know funding bodies' closing dates for applications for their studentships, scholarships and awards. Most of these bodies expect you to have a provisional offer from our University before you apply, so make sure you apply to us as early as possible if you also intend to apply for funding. See page 36 for more about funding.

5

6. Join us!

If your application is accepted, we will warmly welcome you into our community at Manchester. All of our taught master's courses begin at the start of our academic year in September.

6

** Need help with the application process? See pages 50 and 51 for details of support for international students, and applicants with additional support needs.*

FINANCE

Fees

Tuition fees for taught postgraduate courses cover the cost of your study with us, as well as charges for registration, tuition, supervision, examinations and graduation. They also entitle you to membership of our libraries, the Students' Union and the Athletic Union.

Tuition fees vary from course to course. Look up your chosen course on our website to find out the associated fee:

www.manchester.ac.uk/study/taught-masters

Funding

When considering studying for a taught postgraduate qualification, it's important to consider as early as possible how you will finance your study. The majority of our taught master's students are self-financing and we provide support and guidance to help them budget accordingly. However, pockets of funding do exist and we recommend that you explore the following options:

- Ask our staff in your chosen subject area how previous students have financed their studies. Specific funding for your area may be available, and our staff will be able to advise you on how to apply for it.
- If you're an international student, we recommend that you contact both the ministry of education and the British Council in your home country; they will be able to advise on any funding streams available to you by nationality.
- Browse the 'Alternative Guide to Postgraduate Funding', an annual guide providing a comprehensive overview of various funding sources for the voluntary sector, available to download from our website: www.manchester.ac.uk/study/masters/funding/alternative

EQUITY AND MERIT SCHOLARSHIPS

Our Equity and Merit Scholarships aim to assist talented, economically disadvantaged students from some of the world's poorest countries. They enable you to undertake postgraduate masters degrees that are not available in your home country, and which are intended to fill a particular skills gap.

These scholarships are jointly funded by the University and our alumni; we waive your tuition fee in full, while the generosity of alumni covers your living costs and flights to the UK. Awards are also available for study by distance learning.

www.manchester.ac.uk/equity-merit

** Postgraduate Education – An Independent Inquiry,
'The Higher Education Commission, 2012.*

FIND OUT MORE

www.manchester.ac.uk/study/masters/funding





“The facilities are state of the art. You walk into the laboratories and you’re wowed! The rich research atmosphere and the supportive environment have boosted my self-confidence, my independence of thought and my creativity.”

PROFILE

Faith Nanyonga

MSc Student in
Medical Microbiology

39

At the cutting edge of vaccine research

Faith's dream is to become a world-class research scientist and develop a vaccine against the HIV virus that has ravaged her native Uganda. In Manchester she has made academic connections that have already set her on that path. It has, she says, been "life-changing".

"I got interested in HIV studying bio-medical laboratory technology at Makerere University in Uganda. Then I worked for three years at the Uganda Virus Research Institute.

"My country is struggling with infectious diseases like HIV/Aids, malaria and tuberculosis, and vaccine development is considered the most feasible solution – yet only tuberculosis has one at present. I decided I wanted to continue my research into vaccines against tropical diseases, and HIV in particular.

"The master's course I wanted to do simply wasn't available anywhere at home and I was thrilled to be offered an Equity and Merit Scholarship to come to Manchester.

"The course content was very relevant to my future ambitions and fitted very well. I've been able to make good networks and connections in terms of the work I'm doing and my future career. I've been able to talk to some outstanding professors and read some world-class journals. It's opened my eyes and made me more optimistic about what lies ahead.

"After my master's I would like to do a PhD in vaccine research specifically for HIV. What is happening in the scientific world shows me it is achievable. I need to return to Uganda first, but I would love to come back and do my PhD here. It's at the cutting edge of research.

"I'd never been to Manchester or the UK before and I like a lot about its diverse culture. It's a cosmopolitan city, and socially too I've been enlightened.

"I'm a scholarship ambassador for the Alan Gilbert Scholarship and for the University at large, and that's enabled me to give something back. I tell anyone looking for a university: Manchester is THE place to be."



Postgraduate research programmes

As a postgraduate researcher at Manchester, you'll undertake independent research under the supervision of a senior academic, contributing to the body of professional knowledge in your specialist area.

Some programmes may involve a taught element, or specific training in research skills; others may focus on interdisciplinary research, or involve a research partnership with another institution or external organisation.

“Research enhances everything we do at Manchester, underpinning our programmes, driving academic discovery, informing industrial and public service innovation, and effecting positive change across the world. Our doctoral experience is both challenging and extremely rewarding, and we are committed to supporting you through every stage of your research programme.”

Professor Matt Lambon-Ralph

Associate Vice President for Research
Director of Manchester Doctoral College



WHY MANCHESTER?

We welcome the most able and ambitious postgraduate research students into our thriving research culture at Manchester, which fosters intellectual endeavour and encourages innovative, cross-disciplinary collaboration. That's why we offer a challenging yet supportive research environment and experience that will help you develop in your personal, social and intellectual qualities.

A researcher development strategy underpins our commitment to your personal and professional growth. You can undertake a blend of cross-disciplinary and generic skills training that will complement your degree, and access comprehensive careers advice and guidance tailored to postgraduate researchers.

We are also investing in further dedicated postgraduate facilities; opening in 2016, our Manchester Doctoral College Hub will provide postgraduate researchers with social space, access to digital resources and a shared study environment.

MANCHESTER DOCTORAL COLLEGE (MDC)

As a postgraduate research student at Manchester, you'll become part of our MDC community, which unites students, supervisors, administrators and external collaborators in working to improve facilities, locate accessible funding and enhance the postgraduate research experience across our institution.

The MDC is committed to:

- working in collaboration with you to generate internationally leading research;
- guiding you towards a successful future, whether within or outside of academia;
- celebrating your successes and promoting our postgraduate research community and its needs across the University;

- setting standards and expectations for postgraduate research students and the University, and setting out a code of practice;
- supporting you to make the most of the opportunities at Manchester.

RESEARCH DEVELOPMENT PROGRAMME

Each of our four Faculties offers an extensive researcher development programme, which provides a blend of cross-disciplinary and generic skills training opportunities and equips postgraduates with the skills, attributes and knowledge to thrive as independent researchers and professionals. Training covers areas such as research management, personal effectiveness, career management, engagement, influence and impact.

www.manchester.ac.uk/researcher-development

SUPPORTING BUSINESS INNOVATION

We have an enviable track record when it comes to turning ideas into reality, including helping students to realise the commercial potential of their research. Our innovation company, UMI3, works with researchers, entrepreneurs, business people, professional advisers and investors to handle hundreds of invention disclosures submitted by our academics, and to help create companies based on our current research.

UMI3's dynamic support system also helps attract leading academics to Manchester who share our desire to ensure academic research has real-world impact, making us a force for enterprise, innovation and positive change in the world.

www.umi3.co.uk

FIND OUT MORE

www.manchester.ac.uk/study/postgraduate-research/why-manchester



TYPES OF RESEARCH PROGRAMMES

Why do you want to undertake a research programme: self-development, curiosity, to influence change, to develop your career? Understanding your motivation will help you to decide which type of research degree that will best suit you.

Doctor of Philosophy (PhD)

A programme of supervised research over three to four years, the results of which must show evidence of originality and independent, critical judgement, and constitute an addition to knowledge. Some programmes include specific taught courses to complement your research.

Collaborative PhD

Includes a research project undertaken with an external partner, eg another higher education institution, a private company, a public body, or the NHS. You can study on a split-site basis, or as a joint award. Contact the relevant School or Faculty to find out more.

Professional, engineering and enterprise doctoral programmes

These relate to specific professional areas and incorporate a taught component. We offer them in:

- Clinical Psychology (ClinPsyD)
- Counselling Psychology (DCounsPsych)
- Education (EdD)
- Educational Psychology (DEdPsy)
- Educational and Child Psychology (DEdChPsychol)
- Engineering (EngD)
- Enterprise (EntD)

Doctor of Business Administration (DBA)

A programme of supervised research over three to four years. This degree is ideal if you seek to advance your career within a research-oriented business or government organisation, or expect to be engaged in a significant amount of business consultancy work.

Doctoral Training Centres and Partnerships (DTC and DTP) PhD

A four-year integrated research degree combining taught courses with a programme of supervised research, leading to a doctoral research project. We offer a strong focus on interdisciplinary research in order to foster cutting-edge, internationally competitive research.

For a full list of Doctoral Training Centre and Partnerships please visit www.manchester.ac.uk/study/postgraduate-research/why-manchester/doctoral-college/doctoral-training

Doctor of Medicine (MD)

Two years of supervised research in any area of clinical medicine.

Master of Philosophy (MPhil)

Usually lasting 12 months, this degree involves the submission and examination of a shorter thesis than that required for a PhD, but which still sets out the results of an original, individual programme of investigational research. If you successfully complete your MPhil and prepare a detailed plan for a doctoral research project, you may be able to transfer onto a PhD.

MSc by Research

Includes subject-specific taught course units, research skills training and a substantial research project, or series of research projects, over a 12-month period.

Master of Enterprise (MEnt)

A research master's programme offered across the whole of the University which enables you to research a business opportunity. The programme is supported by a number of taught units, which give you the key skills necessary to create your business.



FLEXIBLE STUDY OPTIONS

Full-time/part-time

We offer most of our postgraduate research programmes on a full-time and part-time basis. Check the listings in this prospectus to see if your preferred programme is available to study part-time.

Distance learning

A handful of our research programmes are available via distance learning (eg midwifery and nursing). Distance learning programmes are delivered off-site, and usually allow you to progress via self-study using printed materials and web-based resources.

At Manchester we invest heavily in online and interactive technologies to allow you to connect with staff and fellow students, and enjoy the same support as you would on campus.

Start dates

Research programmes usually start in late September; however, many offer entry points for enrolment in January, April and June.

HOW TO WRITE A RESEARCH PROPOSAL

The research proposal plays a key part in the assessment of many PhD applications and it warrants investing your time and energy into it. Typically a research proposal ranges between 1,000 and 1,500 words, but you should consult with the relevant School for specific guidance on word count.

Generally a research proposal should show evidence of intellectual purpose and originality, demonstrate that you are capable of communicating your ideas clearly, define the topic you are interested in and show a good awareness of the research context.

www.manchester.ac.uk/research-proposal

Choosing a supervisor

We strongly recommend that you contact an academic member of staff to discuss your research proposal and key objectives before you submit a formal application. This will enable you to fine-tune your proposal and check that we can identify a suitable supervisory team. The supervisor team will provide you with support, advice and guidance throughout your research degree.

www.manchester.ac.uk/choose-supervisor

Journey to a PhD

1. Your research idea

Read extensively around your subject to hone your idea. If you are generating your own research project – as opposed to applying for a pre-defined research project – identify potential sources of funding and seek guidance as to their suitability.

1

2. Select the right School

Find where the right expertise lies to support your research at Manchester – or view the profile of the supervisor in charge of your predefined research project.

Search our expertise:
www.manchester.ac.uk/discover/structure/faculties-schools
www.manchester.ac.uk/research/people

2

3. Contact a potential supervisor

Within your chosen School, identify a potential supervisor with experience in your field and contact them to discuss your proposed area of research. If applying for a predefined project, contact the specified supervisor before you apply to introduce yourself and ask specific questions.

Get tips for choosing a suitable supervisor:
www.manchester.ac.uk/choose-supervisor

3

4. Compose your research proposal (if required)

This crucial part of the doctoral application process should make a positive impact and powerful first impression about your potential.

Get help to write a strong research proposal: www.manchester.ac.uk/research-proposal

4

5. Apply

Note any application deadlines, especially for funded studentships. When ready, complete and submit our online application form. You will need relevant documentation: CV, certificates, transcripts, evidence of English language ability (if applicable), etc.

Discover how to apply:
www.manchester.ac.uk/pg-research-apply

5

6. Funding

The question of funding is one that many research students face. Start looking as early as possible and read our tips on the opposite page.

6

FINANCE

Fees

Tuition fees for postgraduate research programmes cover the cost of your study with us, as well as charges for registration, tuition, supervision, examination and graduation. They also entitle you to membership of our libraries, the Students' Union.

Tuition fees vary for different programmes. For all our current fees information, including details for individual programmes, see: www.manchester.ac.uk/study/postgraduate-research/fees

Funding

Securing funding can be a challenging and competitive process – but opportunities are available. Start looking as early as possible to get a head start, and don't be afraid to ask questions.

- Ask the Admissions Officer or Recruitment Manager in your chosen School how previous students have financed their studies. Specific funding for your area may be available, and our staff will be able to advise you on how to apply for it.
- Search our funding database to discover awards that you could apply for: www.manchester.ac.uk/study/postgraduate-research/funding/opportunities
- Request a copy of the 'Alternative Guide to PG Funding' by emailing: mdc@manchester.ac.uk

Studentships

We offer a variety of studentships based on academic excellence, which give the brightest applicants from around the world the opportunity to pursue postgraduate research. Before applying for a studentship, read the eligibility criteria thoroughly and note the closing deadline.

School and Faculty awards

Some sources of funding are managed and awarded directly by Schools or Faculties. Some Schools advertise funding on their websites; contact them directly for advice. For Faculty awards, see:

Faculty of Engineering and Physical Sciences:

www.manchester.ac.uk/eps/our-research/funding

Faculty of Humanities

www.manchester.ac.uk/humanities/postgraduate/research/studentships

Faculty of Life Sciences

www.manchester.ac.uk/life/phdprogrammes/funding

Faculty of Medical and Human Sciences

www.manchester.ac.uk/mhs/postgraduate/studentships

Research Council funding

The UK's seven Research Councils are a major source of funding for UK/EU postgraduate researchers. Research Council funding for postgraduate research goes directly to our University; we then select and recruit students via Schools and as part of our Centres for Doctoral Training.

Contact the Faculty you wish to study at for advice on what funding is available, your eligibility and the application procedure.

PRESIDENT'S DOCTORAL SCHOLAR AWARDS

These prestigious doctoral funding awards are endorsed by our President and Vice-Chancellor, Professor Dame Nancy Rothwell, as part of our commitment to research excellence and equality of opportunity.

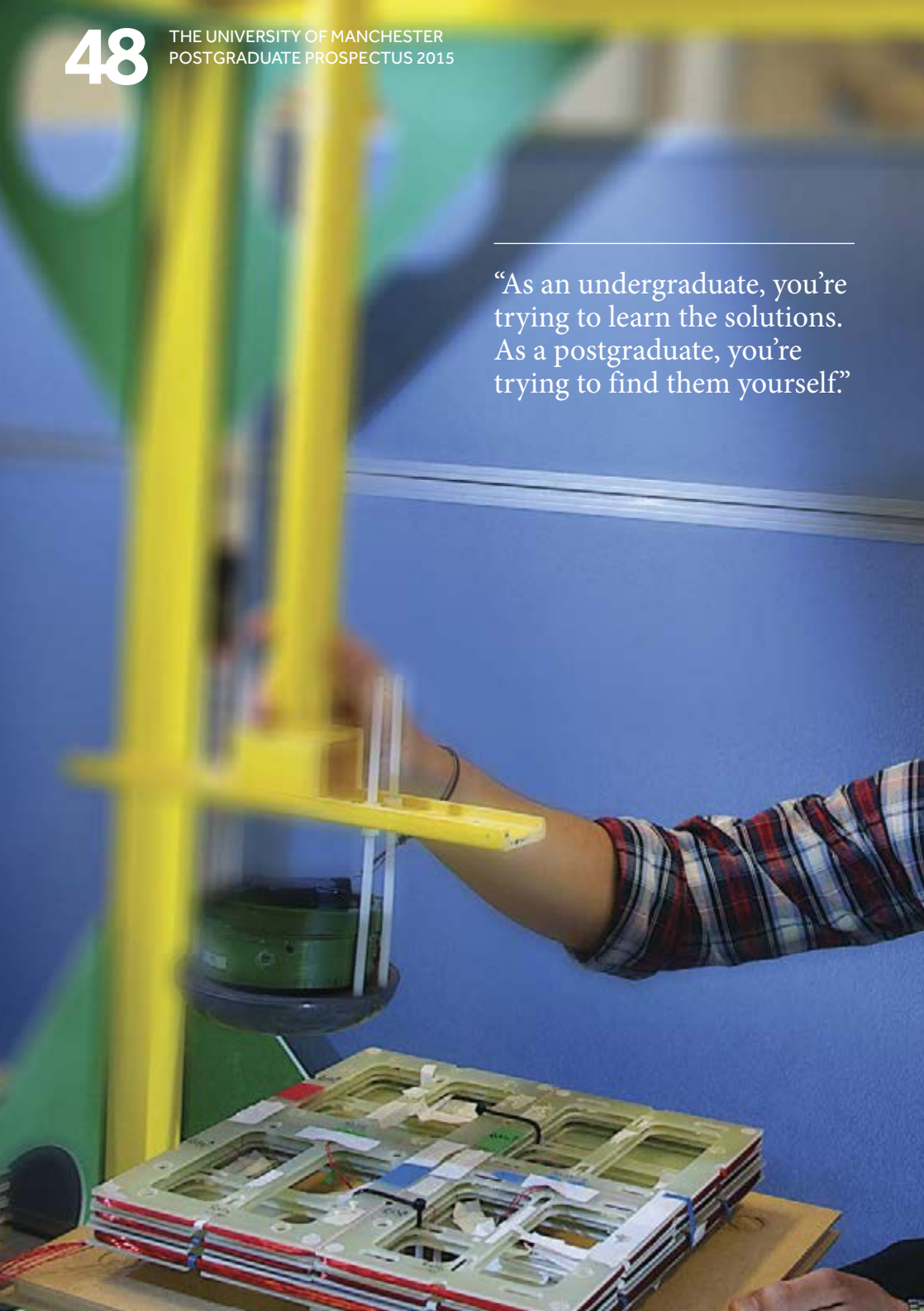
We offer more than 100 elite studentships each year to the most outstanding students from across the globe to support their research training with prominent academics across all our subject areas.

www.manchester.ac.uk/presidentsaward

FIND OUT MORE

www.manchester.ac.uk/study/postgraduate-research/funding

“As an undergraduate, you’re trying to learn the solutions. As a postgraduate, you’re trying to find them yourself.”

A person wearing a plaid shirt is working in a laboratory. They are holding a yellow frame that is part of a larger piece of equipment. The equipment includes a green cylindrical component and a stack of white rectangular frames on a wooden surface. The background is a blue wall.

PROFILE

Omar Abdel Rehim

Electrical and Electronic
Engineering PhD student

49

Finding answers, saving lives

Omar's research has relevance in fields far beyond academia. His work on land-mine detection could help save lives around the world. It's taken him to some unusual places too.

"I was attracted to Manchester by its reputation and the city life. The quality and the amount of research that they do here is phenomenal. I actually did my undergraduate degree here; once I finished that I thought it'd be a shame not to carry on.

"I'm working on an intelligent discriminating land-mine detector. The work is funded by the Find a Better Way charity, which was founded in Manchester by Sir Bobby Charlton to support the extraction of land-mines. I didn't realise I'd be involved in so many activities beyond my research – when the charity launched, we went to Lloyd's of London to talk with these guys who were making a huge donation. I've recently visited the House of Commons to present the project to MPs. I'm even running a 10k race to raise awareness!

"Manchester is a diverse city. I'm from Alexandria in Egypt and so, coming from a big city, I like the fact that there is a lot to do. There is a big student influence and population here; a lot of similarly aged people at similar positions in their lives. Outside my research, I'm part of the University's swimming and water polo teams, which is good socially and keeps me fit.

"My career prospects have changed. I'm considering either going into research or doing consultancy, whereas before I was going to go into oil and gas or electricity. I've developed problem-solving skills and patience, as you spend a lot of time trying things that don't work. Manchester has definitely made me more mature. I now know I can take command of what I want to do with my life and how I'm going to do it."



Support

Should any issues come up during your studies at Manchester – personal, academic, financial, or administrative – we have experienced and sympathetic people, support groups and advice services to help you.

ADVICE SERVICES

The Atrium building is where you'll find specialist advisers on hand to chat to you about careers, volunteering, managing money, international programmes, support and well-being – everything that can help you make the most of Manchester. www.uomtheatrium.wordpress.com

You can also speak to the Students' Union Advice Centre for independent, confidential advice on personal and academic issues: www.manchesterstudentsunion.com/advice-service

CHILDCARE

Two centres are associated with our University for children between six months and five years of age: Dryden Street Nursery and Echoes Nursery.

RELIGIOUS SUPPORT

There are two chaplaincy centres for the major Christian churches: St Peter's House (with chaplains for the Anglican, Baptist, Methodist and United Reformed churches, plus contacts with other Christian churches and faith communities), and the Roman Catholic Chaplaincy at Avila House. We also have prayer facilities on campus for Muslim students and student societies for many religions.

DISABILITY SUPPORT

If you have any particular needs arising from a medical condition, a mental health difficulty, a physical or sensory disability, or a specific learning difficulty such as dyslexia or dyspraxia, we encourage you to contact our Disability Support Office as early as possible to discuss these needs, any arrangements that may be necessary and what support we can offer.

If you are an international applicant with personal care needs, you need to discuss your support needs with our Disability Support Office before you come to the University. You will need to have sufficient funding to support you, including the cost of any personal care that you might need.

tel +44 (0)161 275 7512
text +44 (0) 79899 658 790
dso@manchester.ac.uk
www.manchester.ac.uk/dso

EQUALITY AND DIVERSITY

We are firmly committed to providing a positive learning environment that is free from discrimination, harassment and bullying, where all students are treated with respect and dignity. www.manchester.ac.uk/equalityanddiversity

SUPPORT FOR INTERNATIONAL STUDENTS

Settling in

To help you feel welcome and settle in quickly at Manchester, we offer you:

- **Pre-departure briefing** – staff from our International Office organise pre-departure briefings in a number of countries.
- **Arrival Guide** – an in-depth guide that we will send you before you leave home, containing useful advice and information to help you prepare for to come to Manchester.
- **University shuttle service to residences** (available in September) – enjoy a warm welcome when you arrive at Manchester Airport and free transportation to your accommodation.
- **Orientation** – a programme of presentations and workshops covering everything from finding your way around, to using public transport, buying essential items and opening bank accounts.

In addition, our Welcome and Orientation social events help you to make new friends, settle into your new life and relax a little before your studies begin. www.manchester.ac.uk/study/international/arrival

Students' Union societies

Among our many Students' Union student societies, you'll find a variety run by and for specific international student groups. These are a great way for you to socialise and get involved in activities outside of your studies. www.manchesterstudentsunion.com/societies

Our campus-based International Society organises a comprehensive social and cultural programme for all students in Manchester, providing international students with a warm and friendly welcome when they arrive in the city and contributing to making their time in the UK a wonderful experience: www.internationalsociety.org.uk

International Advice Team

Our dedicated International Advice Team can offer you assistance on any issues you may have during your time with us, including visa advice or working in the UK. Contact the team via email: iat@manchester.ac.uk.

“I am a member of the International Society, which has a lot going on for international students, like trips to different places in the UK and cultural evenings. The Society also sends us regular emails, which ensure we stay abreast of social issues and keep us entertained and informed. The Student Services Centre is also brilliant. You can always drop in and your query will be answered.”

Olive Sabiiti
PhD Law

FIND OUT MORE

www.manchester.ac.uk/student-support
www.manchester.ac.uk/international

Applying to Manchester

You can apply online for our taught and research postgraduate degrees:

www.manchester.ac.uk/study/masters/admissions/apply

www.manchester.ac.uk/study/postgraduate-research/admissions/how-to-apply

SUPPORT WITH YOUR APPLICATION

INTERNATIONAL STUDENTS

We have educational consultants in some overseas countries who can assist you with preparing and submitting your application. Visit your country page on our website to find out more:
www.manchester.ac.uk/international/country

APPLICANTS WITH ADDITIONAL SUPPORT NEEDS

We welcome applications from anyone who has additional support needs as a result of a long-term medical condition, mental health difficulty, disability, or specific learning difficulty, such as dyslexia or dyspraxia. All such applications are considered on exactly the same academic grounds as other applications.

If you need support with your application process, or to discuss support that would be available if you became a student here, our Disability Support Office will be pleased to help.

See page 50 for more about our support services.

ENTRY REQUIREMENTS

For details on the exact qualifications, skills and qualities you need to undertake your chosen postgraduate programme at Manchester, see the programme or course profile on our website:

www.manchester.ac.uk/study/masters/courses
www.manchester.ac.uk/study/postgraduate-research/programmes

INTERNATIONAL QUALIFICATIONS

We recognise many different qualifications from around the world. For details of international entry requirements and equivalencies, see:
www.manchester.ac.uk/international/country

ENGLISH LANGUAGE REQUIREMENTS

An ability to communicate effectively in English is vital to your academic performance and progress at Manchester. You will need a high level of fluency in English to make the most of your learning opportunities with us. Improving your English will also be a valuable long-term skill that will enhance your job prospects.

Approved testing systems

Most international students must demonstrate their English proficiency through a secure and approved testing system, eg IELTS, TOEFL, Pearson, or Cambridge English Advanced/Proficient. These internationally recognised assessments of English language proficiency are designed to determine the ability of non-native speakers of English who intend to study or train in English. IELTS, for example, is accepted by most British, Australian, Canadian and New Zealand academic institutions, and by professional organisations such as the UK General Medical Council.

Minimum requirements vary across postgraduate courses; see the listing for your chosen course on

Common English language tests accepted by The University of Manchester

IELTS	TOEFL	Pearson	Cambridge ESOL	
	Internet-based	PTE	CAE	CPE
7.5 – 9.0	109-120	74+	A	C
7.0	100	66-73	B	C
6.5	90	59-65	C	C
6.0	80	52-58	C	C
5.5	72	51	C	C

our University website. It is important that you check with your prospective School for the English language requirements for your intended course.

Other testing systems

We do accept some other testing systems for individual countries. Find information on these by contacting our International Office, or visiting your country page on our international website: www.manchester.ac.uk/international

Please note that some secure English language tests such as IELTS expire after two years, and that your certificate must be in date at the time you plan to start your intended course. If your certificate is due to expire before then, you should retake the test.

Testing centres

Suitable testing centres in prospective students' home countries for IELTS can be found by contacting the local British Council office, or from: www.ielts.org

For information about Pearson, visit: www.pearsonpte.com

For information on TOEFL, visit: www.ets.org

ENGLISH LANGUAGE SUPPORT

Our University Language Centre (ULC) has over 30 years' experience of running English language courses for our international students. These courses are accredited by the British Council.

Our ULC is an IELTS testing centre and its pre-sessional courses are accredited by BALEAP (British Association of Lecturers in English for Academic Purposes). www.manchester.ac.uk/langcent



OUR COURSES AND PROGRAMMES

Our complete list of postgraduate subject areas and degree programmes is set out in the following pages.

Please note that all information is correct at the time of going to print. However, we aim to keep our study programmes as current as possible, which means some changes may be made at a later date. Check our website for the most up-to-date information before applying, or use the contact details for the relevant subject areas to find out more.

We use the following abbreviations throughout the pages that follow:

FT: full time
PT: part time
DL: distance learning
RAE: Research Assessment Exercise

For a full index of courses and programmes, see page 125.

RAE key

The RAE measured the quality of research conducted in universities and higher education institutions in the UK against international standards of excellence.

In the following pages we reveal how each of our subject areas fared in the most recent RAE (2008). The results present the proportions of research activity in each area judged to have met each of the following definitions of quality levels:

4* world-leading
3* internationally excellent
2* recognised internationally
1* recognised nationally

FIND OUT MORE

www.manchester.ac.uk/research/rae-ref



AEROSPACE ENGINEERING

WHY MANCHESTER?

- We are one of the largest schools in Europe incorporating mechanical, aerospace and civil engineering, and our research is curiosity driven and industry inspired
- We ranked third in the UK for engineering and technology according in the Shanghai Jiao Tong league table in 2012
- We have over 200 years' expertise in teaching engineering and many of our graduates achieve excellence on a worldwide stage
- We have strong teaching and research links with over 300 companies, including industrial links with Airbus, Rolls-Royce, EADS, DSTL, MBDA and ESTEC/ESA

RAE SCORES

4* 20% 3* 50% 2* 30% 1* 0%

You will obtain a thorough understanding of engineering principles, coupled with excellent practical and personal transferable skills. All of our graduates are held in high regard by industry, finding rewarding work in all engineering sectors.

Our research in aerospace engineering includes aerodynamics, acoustics, autonomous systems, and engineering design and optimisation. In strong collaboration with the aerospace industry, we undertake cutting-edge research of practical importance using both experimental and computational approaches.

We are committed to providing you with the best experience and, as well as teaching, we will support you with an intensive induction programme, research seminars and career development programmes. Our PhD students have a dedicated space in our new state-of-the-art research villages.

We collaborate extensively with industry, city councils and government organisations, not only in terms of research and collaborative work but also in the design and content of all taught courses.

MASTER'S COURSES

MSc Aerospace Engineering
FT

RESEARCH PROGRAMMES

MPhil/PhD Aerospace Engineering
FT / PT

MSc by Research Aerospace Engineering
FT

There are a number of funding opportunities available for UK and international students. For more about funding opportunities, including The University of Manchester's Presidential Doctoral Awards (PDS), the Dean's award and other external funding schemes, please go to:

www.mace.manchester.ac.uk/study/postgraduate-research/funding

CONTACTS

Master's enquiries

+44 (0)161 306 9219
pg-mace@manchester.ac.uk
www.manchester.ac.uk/mace

Research programme enquiries

+44 (0)161 275 4345
pg-mace@manchester.ac.uk
www.manchester.ac.uk/mace

ARCHAEOLOGY

WHY MANCHESTER?

- We are an internationally renowned centre for social and theoretical archaeology, with a strong emphasis on interdisciplinary and scientific approaches
- Our academic staff conduct world-leading research in exciting fields such as the archaeology of identity, ritual, medicine, materiality, monumentality, urbanism and cultural heritage
- In the last Research Assessment Exercise (RAE 2008), 90% of our research was considered to be of international standard and 60% either world-leading or internationally excellent
- You will benefit from excellent research training, expert supervision, and a strong, vibrant departmental community

RAE SCORES

4* 15% 3* 45% 2* 30% 1* 10%

Archaeology offers a fascinating journey of discovery into the material and social dimensions of past human societies. We are a medium-sized archaeology department with a strong sense of community and a very supportive, friendly atmosphere.

Our research and teaching is characterised by a unique combination of theoretical sophistication, a concern with contemporary social and political contexts, and a commitment to practical field- and laboratory-based research. Our fieldwork projects sit at the heart of research and teaching, providing you with access to original research ranging from the Palaeolithic to the 20th century, and from our own doorstep in Manchester to areas as far afield as Iraq, Easter Island, Tasmania and Timbuktu.

As well as benefitting from our own exciting research culture, our students often pursue interdisciplinary programmes of study, taking advantage of our strong ties with anthropology, history, ancient history, art history, geography and the sciences.

MASTER'S COURSES

MA Archaeology

FT / PT

RESEARCH PROGRAMMES

MPhil/PhD Archaeology

FT / PT

We are part of the North West AHRC Consortium, which makes approximately 40 awards per year. In addition, we have postgraduate bursaries and Presidential Doctoral Scholarships, which are open to international students. Our students are in open competition with other disciplines, but we usually also receive one or two of these awards. In addition, we usually have loyalty discounts for Manchester alumni.

FUNDING

MA funding:

www.manchester.ac.uk/alc/fees/postgraduate-taught-funding

PhD funding:

www.manchester.ac.uk/alc/fees/postgraduate-research-funding

CONTACTS

Master's enquiries

+44 (0)161 275 3144

MASALC@manchester.ac.uk

www.manchester.ac.uk/alc/apply/postgraduatetaught

Research programme enquiries

+44 (0)161 275 3559

PhDSALC@manchester.ac.uk

www.manchester.ac.uk/alc/apply/postgraduateresearch

ARCHITECTURE

WHY MANCHESTER?

- The Manchester School of Architecture is an innovative collaboration between The University of Manchester and Manchester Metropolitan University
- We are one of the largest architecture schools in the UK with over 100 years of educational experience
- We provide professionally recognised postgraduate degrees and consistently rank as one of the best architecture schools in the UK
- We have strong links with national and international architectural practices
- Manchester is a showcase for recent regeneration and historic context, much of which has been designed with the involvement of our graduates

RAE SCORES

4* 20% 3* 35% 2* 30% 1* 10%

Manchester School of Architecture has an excellent reputation for variety, vitality and quality of work. We have specialist, research-active staff, who provide a rich and stimulating environment. Many of our staff are, or have practised as, architects and have strong links with the architecture community in Manchester and beyond.

By drawing together the considerable resources of the two universities, we can offer you a wide range of study options and enviable expertise in teaching and research. You will also have access to the facilities and resources at both institutions, such as libraries, computer suites, making and media workshops and much more.

Our architectural research is mainly carried out within the Manchester Architecture Research Centre (MARC). Both our postgraduate research and postgraduate taught programmes draw inspiration from our research activity and you are encouraged to actively take part in the research culture of the School.

MASTER'S COURSES

MA Architecture and Urbanism
FT / PT

MArch Master of Architecture
(ARB/RIBA Part 2)
FT / PT

RESEARCH PROGRAMMES

PhD Architecture
FT / PT

CONTACTS

Master's enquiries
+44 (0)161 275 0969
seed.admissions@manchester.ac.uk
www.manchester.ac.uk/architecture

Research programme enquiries
+44 (0)161 275 0969
seed.admissions@manchester.ac.uk
www.manchester.ac.uk/architecture

ART HISTORY AND VISUAL STUDIES

WHY MANCHESTER?

- Proud to be at the forefront of international research in the history, criticism and theory of art and architecture, our department was rated fourth in the country in the last national Research Assessment Exercise (RAE 2008)
- Our research culture is vibrant and interdisciplinary, with a cohort of ambitious and collegial postgraduate researchers
- In autumn 2014, the University's award-winning Whitworth Art Gallery will complete a multimillion-pound redevelopment programme that will open up its world-class collection to our students
- Our other globally renowned cultural assets include the John Rylands Library and the Manchester Museum
- The city of Manchester is home to a buzzing contemporary art scene

RAE SCORES

4* 40% 3* 40% 2* 15% 1* 5%

Our postgraduate programmes draw on the wide-ranging expertise of our academic staff, engaging with material from the Middle Ages to the present. We are noted for our strong interdisciplinary orientation, with particular strengths in modern and contemporary art, architectural history, museum studies, the history and theory of sexuality, experimental art-writing and the intersections of art and science. You will benefit from a dynamic and stimulating research culture, with regular research seminars and prestigious visiting speakers.

Our community of postgraduate researchers will provide a welcoming and intellectually exciting context for your work. You will have access to superb resources, including: the outstanding holdings of our Whitworth Art Gallery in fine and applied art; the renowned collection of medieval illuminated and other precious books in the John Rylands Library; the Egyptian and Classical antiquities of the Manchester Museum; further major gallery and museum collections within the city and region.

MASTER'S COURSES

MA Art History

FT / PT

RESEARCH PROGRAMMES

PhD Art History and Visual Studies

FT / PT

FUNDING

MA funding:

www.manchester.ac.uk/alc/fees/postgraduate-taught-funding

PhD funding:

www.manchester.ac.uk/alc/fees/postgraduate-research-funding

CONTACTS

Master's enquiries

+44 (0)161 275 3559

PhDSALC@manchester.ac.uk

www.manchester.ac.uk/alc/apply/postgraduateresearch

Research programme enquiries

+44 (0)161 275 3559

PhDSALC@manchester.ac.uk

www.manchester.ac.uk/alc/apply/postgraduateresearch

ARTS MANAGEMENT AND CULTURAL POLICY

WHY MANCHESTER?

- We are the UK's only teaching, knowledge exchange and research centre for arts and cultural managers
- Our staff are active in academic research, professional development training and consultancy
- You will benefit from our 50+ active partnerships with cultural agencies and organisations, which offer our postgraduate students placements and the opportunity for practice-based research in world-class venues and institutions across the region's creative and cultural industries
- You will have a choice of core and optional course units providing a solid foundation in practice and theory, as well as opportunities to develop your interests and specialisms

The Centre for Arts Management and Cultural Policy (CAMP) provides a hub for engagement, collaboration and partnership between arts and cultural managers, sector organisations and higher education. We are part of the Institute for Cultural Practices and work closely with colleagues from Museology, Music, Drama and beyond.

Our MA Arts Management, Policy and Practice brings together theory and practice in areas including producing and programming, policy-making, strategic management and leadership, finance and resource development, marketing, engagement, education, research and evaluation. The course is designed to serve as an entry-level qualification for recent graduates, as well as offering professional development for mid-career practitioners. It offers flexibility and opportunities for specialisation, while ensuring a thorough grounding in essential principles and methodology. It provides a solid foundation for careers in different areas of the arts and creative industries.

CAMP has partnerships with many arts and cultural providers, inviting their contribution through guest lectures, site visits, masterclasses and student placements.

MASTER'S COURSES

MA Arts Management, Policy and Practice
FT / PT

MEnt Arts and Cultural Management
(delivered with the Manchester Enterprise Centre)
FT / PT

RESEARCH PROGRAMMES

Professional Doctorate Arts and Cultural Management
PT

PhD Arts Management and Cultural Policy
FT / PT

FUNDING

Bursaries and scholarships are available to applicants for research and taught programmes on a competitive basis. Recent graduates of The University of Manchester may be eligible for an Alumni Loyalty Award.

For more information about funding, see:
www.alc.manchester.ac.uk/graduateschool/funding

CONTACTS

Master's enquiries
+44 (0)161 306 1259
MASALC@manchester.ac.uk
www.manchester.ac.uk/artsmanagement

Research programme enquiries
+44 (0)161 275 3559
PhDSALC@manchester.ac.uk
www.manchester.ac.uk/artsmanagement

AUDIOLOGY

WHY MANCHESTER?

- Our research underpins, and is informed by, our leading role in audiology education and audiological service delivery in the UK
- Our multidisciplinary research team includes professionals in audiology, deaf education and medicine, in addition to experts in psychophysics, electrophysiology, signal processing and neural imaging
- We have close links within the School of Psychological Sciences with colleagues in Clinical Psychology and Psychology, as well as established relationships with colleagues in local health services
- The Graduate School acts as the hub for our postgraduate community involved in a diverse range of study, from short-term professionally linked programmes through to research training in multidisciplinary areas

RAE SCORES

4* 10% 3* 35% 2* 45% 1* 10%

Our extensive portfolio of education and training includes professional development courses in areas as diverse as auditory science, paediatric audiology and vestibular assessment, all of which are accredited by the British Academy of Audiology. These courses are ideally suited for registered audiologists, hearing therapists and others wishing to further their knowledge and link theory with contemporary practice.

We also offer diploma and master's training within deaf education, providing support for qualified teachers with an evidence-based approach to meeting the diverse needs of deaf children.

Our MSc in Audiology provides the theoretical, practical and clinical basis of the science of audiology. It contains two short clinical placements in NHS audiology departments in the north-west of England.

We offer a post-registration MSc/PGDip in Advanced Audiology Studies, which includes a range of course units aimed at providing health professionals with a broad understanding of how audiology services

interact with allied health sciences, such as speech and language therapy.

MASTER'S COURSES

MSc/PGDip Advanced Audiology Studies

FT / PT

MSc Audiology

FT

MSc Deaf Education

PT

PGDip Deaf Education

FT / PT

RESEARCH PROGRAMMES

MPhil/PhD Audiology

FT / PT

Four-year PhD Audiology

FT

MPhil/PhD Speech and Language Therapy

FT / PT

FUNDING

Every year the School is awarded approximately 12 studentships by the research councils and the University that pay the home/EU fees and a stipend of £13,726 (subject to change). These are allocated to the best students that apply for the PhD.

CONTACTS

Master's enquiries

+44 (0)161 275 2585

pg.psychology@manchester.ac.uk

www.psych-sci.manchester.ac.uk/postgraduate/taught

Research programme enquiries

+44 (0)161 306 0259

pg.psychology@manchester.ac.uk

www.psych-sci.manchester.ac.uk/postgraduate/research

CHEMICAL ENGINEERING AND ANALYTICAL SCIENCE

WHY MANCHESTER?

- In the latest Research Assessment Exercise, 65% of our research was described as 'world-leading' or 'internationally excellent'
- Manchester is the birthplace of chemical engineering: it was created by George E Davis of Manchester Technical School in 1887, who wrote the first chemical engineering text book
- We received the Athena Swan Silver award in recognition of our commitment to advancing the careers of women in science, engineering and technology in higher education
- We have some of the best facilities of any chemical engineering school in the UK, including a brand new, state-of-the-art teaching building, which houses a pilot-scale process plant

RAE SCORES

4* 20% 3* 45% 2* 35% 1* 0%

As one of a small group of elite chemical engineering departments within the UK, our success capitalises on the synergies between chemical engineering and bioscience, chemistry, mathematics, and analytical and measurement science.

Our broad research base enables us to study the design, operation and integration of different complex systems - particularly industrial, biological and instrumentation - and apply chemical engineering in a 21st century context.

MASTER'S COURSES

MSc Advanced Chemical Engineering

FT

MSc Advanced Process Integration and Design

FT

MSc Biotechnology

FT

MSc Environment and Sustainable Technology

FT

RESEARCH PROGRAMMES

MPhil/PhD Biocatalysis

FT

MPhil/PhD Biotechnology

FT/ PT

MPhil/PhD Chemical Engineering

FT

MPhil/MSc Integrated PhD/EngD/PhD Chemical Engineering and Analytical Science

FT

MPhil/PhD Colloids, Crystals, Interfaces and Materials

FT

MPhil/PhD Environment and Sustainable Technology

FT

MPhil/PhD Instrumentation

FT

MPhil/PhD Multi-Scale Modelling

FT

MPhil/PhD Process Integration

FT

MPhil/PhD Systems Biology

FT

CONTACTS

Master's enquiries

+44 (0)161 306 4149

pg-ceas@manchester.ac.uk

www.ceas.manchester.ac.uk/study/postgraduate-taught

Research programme enquiries

+44 (0)161 306 4149

pg-ceas@manchester.ac.uk

www.ceas.manchester.ac.uk/study/postgraduate-research

CHEMISTRY

WHY MANCHESTER?

- We have a long and distinguished history of chemical innovation, from the birth of modern chemistry with John Dalton, through to Nobel Prize winners and Manchester students John Polanyi and Michael Smith
- Top five ranking among UK chemistry departments, top ten of European chemistry departments and 40th worldwide in the 2014 QS World University rankings
- We are one of the largest research schools in the UK and the premier institution for chemistry in the north of England, with 66 teaching and 142 research staff, and 226 postgraduate students
- Athena SWAN silver, awarded in 2013 for our commitment to tackling gender inequality and unequal representation of women in science

RAE SCORES

4* 20% 3* 45% 2* 35% 1* 0%

We offer comprehensive academic coverage across the chemical sciences and in all the core sub-disciplines of chemistry. We have research links with over 80 different companies and over 150 overseas universities and research institutes.

We are a major partner in the Manchester Institute of Biotechnology (MIB), which is specifically designed to accommodate an interdisciplinary research community derived from the biosciences, physical sciences, engineering and mathematics, with the aim of becoming a powerhouse of innovative research and technology development at the interface with biology.

We enjoy world-class facilities and have several other centres strongly supported by industry, including the Centre of Excellence for Biocatalysis (CoEBio3), Dalton Nuclear Institute, the Photon Science Institute, Organic Materials Innovation Centre (OMIC), the Centre for Radiochemistry Research, the Centre for Nanoporous Materials and the Michael Barber Centre for Mass Spectrometry.

MASTER'S COURSES

MSc/PGDip/PGCert Chemistry
FT

MSc/PGDip/PGCert Polymer Materials Science and Engineering
FT

Joint course with School of Materials

See also Nuclear Engineering page 100, Nanoscience page 112.

RESEARCH PROGRAMMES

MPhil/PhD Biological Chemistry
FT / PT

MSc by Research/EngD/EntD/MEnt/PhD/MPhil Chemistry
FT / PT

MPhil/PhD Inorganic Chemistry
FT / PT

MPhil/PhD Materials Chemistry
FT / PT

MPhil/PhD Organic Chemistry
FT / PT

MPhil/PhD Physical Chemistry
FT / PT

MPhil/PhD Theoretical Chemistry
FT / PT

CONTACTS

Master's enquiries

+44 (0)161 275 1423
pg.chemistry@manchester.ac.uk
www.manchester.ac.uk/chemistry

Research programme enquiries

+44 (0)161 306 9279
pg.chemistry@manchester.ac.uk
www.manchester.ac.uk/chemistry

CIVIL ENGINEERING

WHY MANCHESTER?

- We are one of the largest schools in Europe incorporating mechanical, aerospace and civil engineering and our research is curiosity driven and industry inspired
- We ranked third in the UK for engineering and technology in the Shanghai Jiao Tong leagues table in 2012
- We have over 200 years' expertise in teaching engineering and many of our graduates achieve excellence on a worldwide stage
- We have strong teaching and research links with over 300 companies, including industrial links with Airbus, Rolls-Royce, EADS, DSTL, MBDA, and ESTEC/ESA

RAE SCORES

4* 20% 3* 50% 2* 30% 1* 0%

You will obtain a thorough understanding of engineering principles, coupled with excellent practical and personal transferable skills. All of our graduates are held in high regard by industry, finding rewarding work in all engineering sectors.

Civil engineering concerns the design, manufacture, maintenance and management of infrastructure, including roads, bridges and buildings. It is about the creation, improvement and protection of a sustainable physical and natural built environment.

We are committed to providing you with the best experience and, as well as teaching, we will support you with an intensive induction programme, research seminars and career development programmes. Our PhD students have a dedicated space in our new state-of-the-art research villages.

We collaborate extensively with industry, city councils and government organisations, not only in terms of research and collaborative work, but also in the design and content of all taught courses.

MASTER'S COURSES

MSc Management of Projects

FT

MSc Management of Projects: Commercial Project Management

FT

MSc Management of Projects: Construction Project Management

FT

MSc Management of Projects: Engineering Project Management

FT

MSc Structural Engineering

FT

All the above MSc courses require you to undertake a research project in Semester 2.

RESEARCH PROGRAMMES

MPhil/PhD Civil Engineering

FT / PT

MSc by Research Civil Engineering

FT

MPhil/PhD Management of Projects

FT / PT

MSc by Research Management of Projects

FT

FUNDING

There are a number of funding opportunities available for UK and international students. For more about funding opportunities, including The University of Manchester's Presidential Doctoral Awards (PDS), the Dean's award and other external funding schemes, see: www.mace.manchester.ac.uk/study/postgraduate-research/funding

CONTACTS

Master's enquiries

+44 (0)161 306 9219

pg-mace@manchester.ac.uk

www.manchester.ac.uk/mace

Research programme enquiries

+44 (0)161 275 4345

pg-mace@manchester.ac.uk

www.manchester.ac.uk/mace

CLASSICS AND ANCIENT HISTORY

WHY MANCHESTER?

- We are one of the largest and liveliest centres for the study of the classical world in the UK, with a long history which allows us to draw on outstanding library provision and expertise in teaching and research
- We are equally strong on both the Greek and Roman sides, in history, literature and language
- All 14 members of our academic staff are active researchers; their specialist fields include epigraphy (Peter Liddel, Polly Low), Graeco-Arabic studies (Peter Pormann) and linguistics (David Langslow)
- We are home to a lively and active research community and our weekly research seminars regularly attract sizeable audiences of over 40

RAE SCORES

4* 25% 3* 30% 2* 35% 1* 10%

Classics and Ancient History has a long and distinguished history at Manchester, with an excellent record in both teaching and research. Recent holders of professorships in classical fields include such distinguished scholars as RS Conway, TBL Webster, JN Adams and TJ Cornell.

Today, the University continues to invest strongly in our subject. Our 14 permanent academic staff are supported by a strong temporary and part-time staff, and a vibrant community of some 30 postgraduates.

Symptomatic of the size and dynamism of our research community is our weekly research seminar, which is one of the largest and liveliest in the country. It is complemented by a very successful PhD/MA research seminar. We also hold a weekly buffet lunch for postgraduates and staff with interests in the Greek and Roman worlds, not only from our subject area and School, but from across the University too.

MASTER'S COURSES

MA Classics and Ancient History

FT / PT

RESEARCH PROGRAMMES

MPhil/PhD Classics and Ancient History

FT / PT

FUNDING

MA funding:

www.manchester.ac.uk/alc/fees/postgraduate-taught-funding

PhD funding:

www.manchester.ac.uk/alc/fees/postgraduate-research-funding

CONTACTS

Master's enquiries

+44 (0)161 275 3144

MASALC@manchester.ac.uk

www.manchester.ac.uk/alc/apply/postgraduatetaught

Research programme enquiries

+44 (0)161 275 3559

PhDSALC@manchester.ac.uk

www.manchester.ac.uk/alc/apply/postgraduateresearch

COMPUTER SCIENCE

WHY MANCHESTER?

- We are ranked first in England and second in the UK for our 'research power', the quality and volume of research undertaken
- Manchester is the birthplace of computer science, with the creation of the world's first stored-program computer in 1948 and the UK's first Computer Science department in 1964
- We continue to produce pioneering research, including new brain-like computer architectures, low power chip design, medical imaging software and new technologies to exploit the power of the web
- We are proud to boast state-of-the-art technologies and facilities to support collaborative work as well as independent learning

RAE SCORES

4* 30% 3* 55% 2* 15%

Computer science is the theory and practice underpinning information technology. From its mathematical foundations, it spans hardware and software engineering, the user interface, and the extension of computing technology into new and exciting areas. By choosing to study at Manchester, you will be joining one of the most innovative and successful schools of computer science in the world.

We have ten research groups operating across the spectrum, from fundamental theory and innovative technology, through novel hardware and software systems design, to leading-edge applications. We boast many cross-disciplinary collaborations in areas such as e-science, systems biology, health informatics, complex systems and nanotechnology; including the groundbreaking experiments with the two-dimensional material graphene that was discovered in our labs.

Our size and collective breadth of knowledge is reflected in the range of MSc pathways we offer and the variety of postgraduate research projects available for you to work with specialists in your field.

MASTER'S COURSES

MSc/MRes Advanced Computer Science
FT / PT

MSc Advanced Computer Science: Advanced Web Technologies
FT / PT

MSc Advanced Computer Science: Artificial Intelligence
FT / PT

MSc Advanced Computer Science: Computer Security
FT / PT

MSc Advanced Computer Science: Computer Systems Engineering
FT / PT

MSc Advanced Computer Science: Data and Knowledge Management
FT / PT

MSc Advanced Computer Science: Digital Biology
FT / PT

MSc Advanced Computer Science: Multi-Core Computing
FT / PT

MSc Advanced Computer Science: Semantic Technologies
FT / PT

MSc Advanced Computer Science: Software Engineering
FT / PT

MSc Advanced Computer Science and IT Management
FT / PT

**MSc Advanced Computer Science and IT
Management: Information Management**

FT / PT

**Foundation Route to MSc Computer Science
(e-learning)**

FT / PT

RESEARCH PROGRAMMES

MPhil/PhD/MEnt Computer Science

FT / PT

PhD (CDT) Computer Science

FT

FUNDING

Five MSc Kilburn scholarships are available at
£2,000 each.

We have approximately 20 three and four year PhD
fees and stipend scholarships available for applicants
eligible to pay home fees. International students may
be eligible for a fees contribution.

CONTACTS

Master's enquiries

+44 (0)161 275 6181

pg-compsci@manchester.ac.uk

www.cs.manchester.ac.uk/study/postgraduate-taught

Research programme enquiries

+44 (0)161 275 0699

pgr-admissions@cs.man.ac.uk

www.cs.manchester.ac.uk/study/postgraduate-research

CREATIVE WRITING AND CONTEMPORARY LITERATURE

WHY MANCHESTER?

- Prize-winning teaching staff, including Professor Jeanette Winterson, MJ Hyland, Geoff Ryman and Vona Groarke
- Creators of online arts journal *The Manchester Review*, which offers a mix of new music, public debate, visual art and video, fiction and poetry
- Our reading series 'Literature Live', attracts an impressive line-up of speakers, such as Martin Amis, Eleanor Catton, Seamus Heaney, AM Homes, Hilary Mantel, Paul Muldoon, Audrey Niffenegger and Colm Toibin
- We have a strong record of graduate publication, including novelists and poets Jenn Ashworth, Susan Barker, Sarah Corbett, Evan Jones, Rebecca Perry, Ian Pople, Marli Roode, Jonathan Trigell and more

RAE SCORES

4* 32% 3* 45% 2* 25% 1* 0%

As a major concentration of high-quality research and teaching, we foster a vibrant postgraduate community and offer a wide range of master's courses and research opportunities.

Our Centre for New Writing is home to our postgraduate degrees in Creative Writing and in Contemporary Literature and Culture. It is a place where talented writers and critics can meet and exchange ideas and opinions. The Centre is founded on the simple but important principle that good writing and good reading go together.

Our students benefit from opportunities including: seminars with Jeanette Winterson; workshops in fiction and poetry writing led by published, award-winning writers; intensive, one-to-one instruction from writers-in-residence; free entry to 'Literature Live', a fortnightly reading series bringing the best contemporary novelists and poets to Manchester; regular visits from literary agents and editors.

Our distinguished teaching staff include: novelists Jeanette Winterson, MJ Hyland, Geoff Ryman and Ian McGuire; poets John McAuliffe and Vona Groarke; literary and cultural critic Kaye Mitchell.

MASTER'S COURSES

MA Creative Writing
FT / PT

MA Screenwriting
FT / PT

RESEARCH PROGRAMMES

PhD Creative Writing
FT / PT

FUNDING

Bursaries and scholarships are available to applicants for research and taught programmes on a competitive basis. Recent graduates of The University of Manchester may be eligible for an Alumni Loyalty Award.

For more information about funding, see: www.alc.manchester.ac.uk/graduateschool/funding

CONTACTS

www.alc.manchester.ac.uk/centrefornewwriting

For MAs:
MASALC@manchester.ac.uk
+44 (0)161 306 1259

For PhDs:
PhDSALC@manchester.ac.uk
+44 (0)161 275 3559

DENTISTRY

WHY MANCHESTER?

- We were rated number one in the UK for research quality in the last national assessment exercise and we perform consistently well in published league tables and student satisfaction surveys
- Our internationally recognised four-year clinical PhD allows you to maintain and develop clinical skills while completing doctoral research, and can be tailored to accommodate your research and clinical specialty interests
- You will have access to all the resources you would expect from such a leading-edge centre of medical education
- Our Graduate School acts as the hub for our postgraduate community and is involved in a diverse range of study, from short-term professionally linked programmes through to research training in multidisciplinary areas

RAE SCORES

4* 30% 3* 45% 2* 25% 1* 0%

Our School of Dentistry is at the forefront of educational development, offering research (MPhil/PhD) programmes and one-year full-time, two-year part-time, or three-year full-time clinically taught courses. For those wishing to combine clinical work with research, we offer a four-year clinical PhD.

The nature of the taught courses with high clinical hands-on experience ensures that, for each course, the group size is relatively small and staff to student interaction is optimised.

The School has been offering these taught courses for more than 20 years, with long-standing courses in Endodontics, Fixed and Removable Prosthodontics, Oral and Maxillofacial Surgery, Dental Implantology and Orthodontics, and more recent courses in Periodontology, Dental Public Health (distance learning) and Restorative and Aesthetic Dentistry (distance learning, collaborative course).

MASTER'S COURSES

MSc/PGDip/PGCert Dental Implantology
PT

MSc/PGDip Endodontics
FT

MSc Fixed and Removable Prosthodontics
FT / PT

MSc/PGDip Oral and Maxillofacial Surgery
FT / PT

MSc Restorative and Aesthetic Dentistry (online)
PT

MSc (Clin) Endodontics
FT

MSc (Clin) Fixed and Removable Prosthodontics
FT

MSc (Clin) Oral and Maxillofacial Surgery
FT

MSc (Clin) Orthodontics
FT

MSc (Clin) Periodontology
FT

MRes/MSc/PGDip/PGCert Dental Public Health
FT / PT

DENTISTRY CONTINUED

RESEARCH PROGRAMMES

MPhil/PhD Basic Dental Science (Cancer Studies)

FT / PT

MPhil/PhD Basic Dental Science (Molecular Genetics)

FT / PT

MPhil/PhD Basic Dental Science (Stem Cell Biology)

FT / PT

MPhil/PhD Biomaterials Science and Dental Technology

FT / PT

MPhil/PhD Dental Public Health (Community Dentistry)

FT / PT

PhD (Clin) Dental Science

FT

MPhil/PhD Endodontology

FT / PT

MPhil/PhD Operative Dentistry

FT / PT

MPhil/PhD Oral and Maxillofacial Surgery

FT / PT

MPhil/PhD Oral Radiology

FT / PT

MPhil/PhD Orthodontics

FT / PT

MPhil/PhD Prosthodontics

FT / PT

MPhil/PhD Restorative Dentistry

FT / PT

FUNDING

For more information on studentships and funding see: www.mhs.manchester.ac.uk/postgraduate/studentships

CONTACTS

Master's enquiries

+44 (0)161 306 0239

pg-dentistry@manchester.ac.uk

www.manchester.ac.uk/dentistry

Research programme enquiries

+44 (0)161 306 0239

pg-dentistry@manchester.ac.uk

www.manchester.ac.uk/dentistry

DRAMA

WHY MANCHESTER?

- We were one of the first British universities to offer drama at postgraduate level, and today we maintain a pioneering, socially engaged approach to the study of theatre and screen media
- You will work alongside distinguished scholars with international research profiles, developing critical skills and research methods through a blend of theoretical and practice-based approaches
- You will have the opportunity to work in collaboration with our cultural partners in the city, such as the Royal Exchange Theatre, HOME (formerly Cornerhouse Cinema), and TiPP (Theatre in Prisons and Probation)
- Our dedicated facilities include the John Thaw Studio Theatre, the Lenagan Library, rehearsal spaces and extensive audio-visual resources

RAE SCORES

4* 45% 3* 40% 2* 15% 1* 0%

We have an international reputation for the quality of our teaching and research in Theatre and Performance, Applied Theatre and Screen Studies. We consider drama in terms of cultural process as well as aesthetic practice, and our innovative approaches to learning are central to our postgraduate degree programmes.

We were the second highest scoring Drama department for research in the UK in the last Research Assessment Exercise (2008). Our research frequently involves interdisciplinary collaboration, and many of our PhD students are co-supervised with colleagues in other subject areas (arts, humanities and social sciences) across the University.

MASTER'S COURSES

**MA Theatre and Performance
(with Applied Theatre pathway)**

FT / PT

MA Screenwriting

FT / PT

RESEARCH PROGRAMMES

MPhil/PhD Drama

FT / PT

PhD Anthropology Media and Performance
(an interdisciplinary programme in collaboration with Visual Anthropology)

FT / PT

Professional Doctorate in Applied Theatre

FT / PT

FUNDING

PhD candidates have the opportunity to apply for both AHRC scholarships (Arts and Humanities Research Council), and Manchester's own prestigious President's Doctoral Award scheme.
www.alc.manchester.ac.uk/fees/postgraduate-research-funding

The School of Arts, Languages and Cultures (SALC) also has various bursaries and awards available for both MA and PhD applicants.
www.alc.manchester.ac.uk/fees/postgraduate-taught-funding

CONTACTS

Master's enquiries

+44 (0)161 275 3144

MASALC@manchester.ac.uk

www.manchester.ac.uk/alc/apply/postgraduatetaught

Research programme enquiries

+44 (0)161 275 3559

PhDSALC@manchester.ac.uk

www.manchester.ac.uk/alc/apply/postgraduateresearch

EARTH, ATMOSPHERIC AND ENVIRONMENTAL SCIENCES

WHY MANCHESTER?

- In the latest Research Assessment Exercise we were placed among the top Earth and Environmental Sciences departments in the UK
- We have excellent research facilities that cover all aspects of field, laboratory and theoretical (computer modeling) investigations, including aircraft for atmospheric studies, high-performance computers for modeling and simulation, and labs to handle microbial and geochemical samples for full analysis
- We offer internationally recognised, innovative courses, taught by academics with wide experience, supported by a dedicated team of industrial specialists, both of which actively support the career development of our graduates

RAE SCORES

4* 20% 3* 50% 2* 25% 1* 5%

Our postgraduate taught courses allow you to deepen your specialist knowledge and hone your applied skills, providing excellent opportunities for employment in the oil industry and environmental sectors.

In addition, we have seven specialist research areas that will give you the opportunity to work alongside some of the best scientists in their field.

Our cross-disciplinary centres include the Centre for Atmospheric Science, the Williamson Research Centre for Molecular Environmental Science, the Research Centre for Radwaste Disposal and the Interdisciplinary Centre for Ancient Life.

MASTER'S COURSES

MSc Petroleum Geoscience for Exploration
FT

MSc Petroleum Geoscience for Reservoir Development and Production
FT

MSc Pollution and Environmental Control
FT / PT

Master of Environmental Sciences, Policy and Management
FT

RESEARCH PROGRAMMES

MPhil/MSc by Research/PhD Atmospheric Sciences
FT / PT

MPhil/MSc by Research/PhD Basin Studies and Petroleum Geoscience
FT / PT

MPhil/MSc by Research/PhD Earth, Atmospheric and Environmental Sciences
FT

MPhil/MSc by Research/PhD Environmental Geochemistry and Geomicrobiology
FT / PT

MPhil/MSc by Research/PhD Isotope Geochemistry and Cosmochemistry
FT / PT

MPhil/MSc by Research/PhD Palaeontology
FT / PT

MPhil/MSc by Research/PhD Physics and Chemistry of Minerals and Fluids
FT / PT

MPhil/MSc by Research/PhD Structural and Petrological Geoscience
FT / PT

CONTACTS

Master's and research programme enquiries
+44 (0)161 275 0776
pg-earthsci@manchester.ac.uk
www.manchester.ac.uk/seaes

EAST ASIAN STUDIES

WHY MANCHESTER?

- In the latest Research Assessment Exercise (RAE 2008), 80% of our research was considered to be of international standard, while well over one-third of the research output was judged to be of world-leading or internationally excellent quality
- We offer innovative programmes in Chinese Studies, Japanese Studies and East Asian Studies, giving you a wide range of internationally recognised and cutting-edge research supervisory expertise on contemporary culture and society, history, language, media, religion and translation
- There is a focus on cross-disciplinary research and co-supervision linking research in Japanese Studies, Chinese Studies and East-Asian Studies with other disciplines

RAE SCORES

4* 10% 3* 25% 2* 45% 1* 20%

We are one of the main research centres for East Asian studies in the UK. Our innovative undergraduate, postgraduate taught MA and postgraduate research programmes in Chinese Studies and Japanese Studies focus on contemporary culture and society, history, language, media, religion and translation. We provide you with a deep knowledge and rich experience of two East Asian powerhouses; we deliver fresh insight into the importance of studying this region through cutting-edge research and teaching.

Research undertaken by the Centre for Chinese Studies (CCS) focuses on modern and contemporary China, particularly the second half of the 20th century, following the founding of the People's Republic of China in 1949. The CCS brings together a range of experts from Schools and Faculties right across the University and forms part of a consortium, the British Inter-University China Centre (BICC), established jointly with the Universities of Oxford and Bristol.

MASTER'S COURSES

MA/PGDip Conference Interpreting
FT / PT

MA/PGDip Intercultural Communication
FT / PT

MA Languages and Cultures (Research Route)
FT / PT

MA/PGDip Translation and Interpreting Studies
FT / PT

RESEARCH PROGRAMMES

MPhil/PhD Chinese Studies
FT / PT

MPhil/PhD East Asian Studies
FT / PT

MPhil/PhD Japanese Studies
FT / PT

MPhil/PhD Translation and Intercultural Studies
FT

FUNDING

Master's funding:
www.manchester.ac.uk/alc/fees/postgraduate-taught-funding

PhD funding:
www.manchester.ac.uk/alc/fees/postgraduate-research-funding

CONTACTS

Master's enquiries
+44 (0)161 275 3144
MASALC@manchester.ac.uk
www.manchester.ac.uk/alc/apply/postgraduatetaught

Research programme enquiries
+44 (0)161 275 3559
PhDSALC@manchester.ac.uk
www.manchester.ac.uk/alc/apply/postgraduateresearch

ECONOMICS

WHY MANCHESTER?

- We are ranked among the top 10 in the UK; we are one of Europe's leading research departments, and among the 100 best worldwide
- Famous economists have worked in Manchester, including Professors William Stanley Jevons, Jack (John) Johnston, Harry Campion and the three Nobel Prize winners Professor Joseph Stiglitz, Sir Arthur Lewis and Sir John Hicks
- Our four-year PhD/MRes is structured as a 2+2 training period with dedicated postgraduate research courses in Year 2 and the possibility to extend the training by a further writing-up year
- All our MSc courses have ESRC-recognition and allow for entry into Year 2 of the PhD programme

RAE SCORES

4* 25% 3* 55% 2* 20% 1* 0%

We are a leading centre for economics research and research-led teaching. The international reach and significance of our research was confirmed by the 2008 Research Assessment Exercise, where we placed in the top ten of all UK Economics departments.

You will be among many other graduate students from around the world who come to study economics here, and you will receive first-class postgraduate training and supervision in the core and specialist areas of economics.

Every year we have around 200 postgraduate students taking one of our MA or MSc courses, or undertaking research for a PhD. Many students on the MA or MSc progress to a PhD, either in Manchester or elsewhere. Others find jobs with high-profile employers.

MASTER'S COURSES

MSc Econometrics

FT / PT

MA Economics

FT / PT

MSc Economics

FT / PT

MSc Economics and Econometrics

FT / PT

MSc Economics (Economics of Health)

FT / PT

MSc Economics (Environmental Economics)

FT / PT

MSc Financial Economics

FT / PT

RESEARCH PROGRAMMES

MRes/PhD Economics

FT / PT

FUNDING

We usually fund up to ten new PhD students each year through studentships equivalent to those provided by the ESRC.

Details of funding opportunities are available at: www.socialsciences.manchester.ac.uk/study-with-us/fees-and-funding

CONTACTS

Master's enquiries

+44 (0)161 275 4471

pg-soss@manchester.ac.uk

www.socialsciences.manchester.ac.uk/subjects/economics

Research programme enquiries

+44 (0)161 275 4743

pg-soss@manchester.ac.uk

www.socialsciences.manchester.ac.uk/subjects/economics

EDUCATION

WHY MANCHESTER?

- We offer a lively international student community, where you will benefit from teaching consistently rated 'excellent' and gain access to the fantastic resources of our University
- We are one of the largest graduate educational research communities in the UK; our Institute offers a rich diversity of opportunity for more than 1,000 postgraduate students every year
- We are the leading provider of doctoral programmes in the north-west and, overall, we ranked 6th in the UK and 32nd in the world in the 2012 QS World University League Table
- All our teacher training courses were rated 'outstanding' by the most recent Ofsted report

RAE SCORES

4* 20% 3* 35% 2* 30% 1* 10%

The Manchester Institute of Education undertakes research that is at the cutting edge of theory and practice. We contribute to improvements in the overall quality of education for learners, their families and communities in educational settings throughout the world.

We provide more than 20 taught postgraduate courses. These have attracted excellent ratings in teaching quality assessments in recent years (including those undertaken by both QAA and Ofsted). The breadth of areas (TESOL, educational technologies and communication, inclusive education, counselling, leadership and school improvement, education with qualified teacher status) covered by the master's and diploma courses attracts students from educational contexts worldwide.

Our highly rated PGCE courses provide high-quality teacher training for both primary and secondary phases.

MASTER'S COURSES

MA Counselling

PT

MA Digital Technologies, Communication and Education

FT / PT

MA Education (International)

FT / PT

MA Educational Leadership

FT / PT

PGCE Primary

FT

PGCE Primary (Modern Language)

FT

PGCE Primary School Direct 5-11

FT

PGCE Secondary Business Education

FT

PGCE Secondary Chemistry

FT

PGCE Secondary Design Technology

FT

PGCE Secondary English

FT

PGCE Secondary German

FT

PGCE Secondary Mathematics

FT

PGCE Secondary Modern Languages (French/German/Spanish)

FT

PGCE Secondary Physics

FT

EDUCATION CONTINUED

PGCE Secondary Physics with Maths
FT

PGCE Secondary School Direct: Business Education (14-19)
FT

PGCE Secondary School Direct Design and Technology (11-16)
FT

PGCE Secondary School Direct (English)
FT

PGCE Secondary School Direct (Mathematics)
FT

PGCE Secondary School Direct Science: Biology (11-16 or 11-18)
FT

PGCE Secondary School Direct Science: Chemistry (11-16 or 11-18)
FT

PGCE Secondary School Direct Science: Physics (11-16 or 11-18)
FT

PGCE Secondary Science Biology
FT

PGCE Secondary Spanish
FT

Postgraduate Certificate in Education - Secondary School Direct (French)
FT

Postgraduate Certificate in Education - Secondary School Direct (German)
FT

Postgraduate Certificate in Education - Secondary School Direct (Physics with Maths)
FT

Postgraduate Certificate in Education - Secondary School Direct (Spanish)
FT

MEd Psychology of Education
FT/PT

MA Teaching and Learning
PT

MA TESOL
FT/PT

RESEARCH PROGRAMMES

Professional Doctorate Counselling Psychology
FT

EdD Education
FT

PhD Education
FT/PT

DEdChPsychol Educational and Child Psychology
FT

CONTACTS

Master's enquiries

+44 (0)161 275 0969

seed.admissions@manchester.ac.uk

www.manchester.ac.uk/education

Research programme enquiries

+44 (0)161 275 0969

seed.admissions@manchester.ac.uk

www.manchester.ac.uk/education

PGCE enquiries

+44 (0)161 275 3671

pgce@manchester.ac.uk

ELECTRICAL AND ELECTRONIC ENGINEERING

WHY MANCHESTER?

- We offer specialist taught MSc courses which attract a large number of outstanding students each year and a range of expertise that is unparalleled by any other UK university
- Our research activities are organised broadly into six groups: Control Systems; Electrical Energy and Power Systems; Microelectronics and Nanostructures; Microwave and Communication Systems; Power Conversion; Sensing, Imaging and Signal Processing
- We have an annual research income of over £8 million, with a high industrial contribution
- We host the Centre for Doctoral Training in Power Networks, funded by the Engineering and Physical Sciences Research Council (EPSRC), and we are recognised for our teaching and research expertise in power systems

RAE SCORES

4* 25% 3* 45% 2* 30% 1* 0%

Electrical and electronic engineering has an impact on virtually everyone in the world. From the basics of providing heat and light, through to the advanced electrical and electronic systems associated with global positioning systems, space exploration or advances in medical science; the subject is indispensable, adding intelligence to many systems.

The world relies on the ingenuity of electrical and electronic engineers so that it can continue to progress and allow life to be more sustainable and fun. The range of activities associated with the subject is immense: from the development of new materials for plastic electronics or photovoltaics, to the power system networks required to effectively harness energy from a range of generation systems.

We contribute to these advances, which placed as evidenced by our Research Assessment Exercise (RAE) ranking us second in the UK. To achieve this, we depend on the contributions from our students.

MASTER'S COURSES

MSc Advanced Control and Systems Engineering
FT

MSc Power Electronics, Machines and Drives
FT / PT

MSc Communication Engineering
FT

MSc Digital Signal Processing
FT / PT

MSc Electrical Power Systems Engineering
FT / PT

MSc Advanced Electrical Power Systems Engineering
FT

MSc Renewable Energy and Clean Technology
FT

RESEARCH PROGRAMMES

PhD/MPhil/MSc by Research /MEnt Electrical and Electronic Engineering
FT / PT

EntD/EngD Electrical and Electronic Engineering
FT

FUNDING

We attract industrial and research council Centre for Doctoral Training and Doctoral Training Partnership funding for research studentships, enabling us to fully fund a number of outstanding students each year.

CONTACTS

Master's enquiries

+44 (0)161 306 4701

pgt-eee@manchester.ac.uk

www.manchester.ac.uk/eee/study/pgt

Research programme enquiries

+44 (0)161 306 4800

pgr-eee@manchester.ac.uk

www.manchester.ac.uk/eee/study/postgraduate-research

ENGLISH AND AMERICAN STUDIES

WHY MANCHESTER?

- We pioneered the UK academic study of the history, literature and culture of the United States, and our American Studies programme is the oldest of its kind in the country
- We offer an intellectually vibrant academic community, which boasts internationally recognised specialists working across the full spectrum of the subject area
- You will have access to a world-class library with exceptionally rich holdings in our field
- 75% of our research was considered world-leading in the latest Research Assessment Exercise (2008)

RAE SCORES

4* 30% 3* 45% 2* 25% 1* 0%

We have a strong research record and staff of internationally recognised standing. We cover both traditional and emerging areas of the discipline, as evidenced by our active research groups: American Studies; Centre for the Study of Sexuality and Culture; Medieval Literary and Cultural Studies; Early Modern Literary and Cultural Studies; Modernism; Postcolonial and Irish.

Our large, active postgraduate English and American Studies community regularly runs conferences and workshops. We offer excellent work and computer facilities through the Graduate School, plus a bursary scheme for MA students and sponsorship for PhD students to attend conferences.

MASTER'S COURSES

MA American Studies
FT / PT

MA English Studies
FT / PT

**MA English Studies
(Contemporary Literature and Culture)**
FT / PT

**MA English Studies
(Literature and Culture 1200-1700)**
FT / PT

**MA English Studies
(Postcolonial Literatures and Cultures)**
FT / PT

**MA English Studies (Post-1900 Literatures,
Theories and Cultures)**
FT / PT

MA English and American Studies
FT / PT

MA Gender, Sexuality and Culture
FT / PT

MA Medieval Studies
FT / PT

RESEARCH PROGRAMMES

MPhil/PhD Creative Writing
FT / PT

MPhil/PhD English and American Studies
FT / PT

FUNDING

MA funding:
www.manchester.ac.uk/alc/fees/postgraduate-taught-funding

PhD funding:
www.manchester.ac.uk/alc/fees/postgraduate-research-funding

CONTACTS

Master's enquiries
+44 (0)161 275 3144
MASALC@manchester.ac.uk
www.manchester.ac.uk/alc/apply/postgraduataught

Research programme enquiries
+44 (0)161 275 3559
PhDSALC@manchester.ac.uk
www.manchester.ac.uk/alc/apply/postgraduateresearch

ENGLISH LANGUAGE AND LINGUISTICS

WHY MANCHESTER?

- Our internationally renowned staff undertake world-class research and offer supervision expertise in a wide range of linguistic subfields and languages
- We provide research training that can be tailored to your interests and needs at both MA and PhD level
- You will have access to our excellent facilities and resources, including the Phonetics Laboratory, a large collection of specialist software and one of the largest holdings of linguistics texts in the UK
- We have a vibrant postgraduate community with several seminar series organised by our staff and postgraduate students

RAE SCORES

4* 10% 3* 45% 2* 35% 1* 10%

Our department is virtually unique, in the UK and beyond, in the range of linguistic subfields, theoretical approaches and languages that it represents. We undertake internationally recognised research in many areas of expertise, combining the advancement of theoretical approaches with a strong concern for their empirical and methodological foundations. We have a strong and diverse research community, consisting of 20 members of staff and approximately 20 master's and 30 PhD students. Many of our past postgraduate students have had very successful careers, including positions in prestigious universities.

We offer postgraduate-level teaching and supervision on a wide range of topics; however, we do not normally supervise projects with a focus on second language teaching and learning. For information about research interests of individual members of staff, please visit our research pages and our staff members' individual pages at www.alc.manchester.ac.uk/subjects/lel

MASTER'S COURSES

MA English Language
FT / PT

MA Intercultural Communication
(jointly with other departments in the School as well as the School of Education)
FT / PT

MA Linguistics
FT / PT

RESEARCH PROGRAMMES

PhD English Language
FT / PT

MPhil/PhD Linguistics
FT / PT

FUNDING

Typically, every year between three and six postgraduate students in Linguistics or English Language will be awarded studentships on a competitive basis by the University, the research councils, or other external funders; these awards can cover tuition fees and/or a maintenance stipend. Some of these studentships are available to international students.

MA funding:
www.manchester.ac.uk/alc/fees/postgraduate-taught-funding

PhD funding:
www.manchester.ac.uk/alc/fees/postgraduate-research-funding

CONTACTS

Master's enquiries
+44 (0)161 275 3144
MASALC@manchester.ac.uk
www.manchester.ac.uk/alc/apply/postgraduatetaught

Research programme enquiries
+44 (0)161 275 3559
PhDSALC@manchester.ac.uk
www.manchester.ac.uk/alc/apply/postgraduateresearch



“It was a revelation for me. I always knew Manchester was academically brilliant, but I enjoyed the city and the quality of life as well. I felt at home here instantly.”

PROFILE

Julia Kolkmann

PhD English Language Student

Confident communicating

Manchester hit all the right buttons for Julia, who credits an “incredibly lovely and welcoming” English department for allowing her to switch halfway through an undergraduate degree in Paderborn in Germany. Five “magical” years later she is still here.

“I self-funded a year abroad here in 2009 because I wanted to do more linguistics, and Manchester was doing exactly the kind of things I was interested in. Transferring from Paderborn was somewhat complicated, but I eventually finished my BA in 2011, secured funding for an MA in Linguistics and then again for my PhD in English Language.

“My main reasons for staying were the high quality of the teaching and supervision. There is an expert in any area of linguistics that interests you and they are all approachable and friendly. I can just knock on somebody’s door and ask their opinion.

“I also get the opportunity to teach, giving seminars and tutorials to accompany lectures for undergraduates, and I’ve discovered I really enjoy standing in front of people and delivering content.

“I was also able to evolve outside my specialism. There is a huge departmental life, which fosters a great community spirit. I’m into sports, especially long-distance cycling, and it’s lovely to explore places like the Lake District and Cheshire. There is such great access to rural areas.

“I also do a lot of outreach work and am a Fellow with the University’s Widening Participation programme, which has allowed me to communicate my research and that of my colleagues to young learners in schools. Think science communication!

“You’re not just stuck in a library for three years, and that’s what’s great about Manchester. I thoroughly recommend it.”

ENVIRONMENTAL ENGINEERING

WHY MANCHESTER?

- We are one of the largest schools in Europe incorporating mechanical, aerospace and civil engineering and our research is curiosity driven and industry inspired
- We ranked third in the UK for engineering and technology in the Shanghai Jiao Tong league table in 2012
- We have over 200 years' expertise in teaching engineering and many of our graduates achieve excellence on a worldwide stage
- We have strong teaching and research links with over 300 companies, including industrial links with Airbus, Rolls-Royce, EADS, DSTL, MBDA and ESTEC/ESA.

RAE SCORES

4* 20% 3* 50% 2* 30% 1* 0%

You will obtain a thorough understanding of engineering principles, coupled with excellent practical and personal transferable skills. All of our graduates are held in high regard by industry, finding rewarding work in all engineering sectors.

We are committed to providing you with the best experience and, as well as teaching, we will support you with an intensive induction programme, research seminars and career development programmes. Our PhD students have a dedicated space in our new state-of-the-art research villages.

We collaborate extensively with industry, city councils and government organisations, not only in terms of research and collaborative work but also in the design and content of all taught courses.

RESEARCH PROGRAMMES

MPhil/PhD Environmental Engineering
FT / PT

FUNDING

There are a number of funding opportunities available for UK and international students. For more about funding opportunities, including The University of Manchester's Presidential Doctoral Awards (PDS), the Dean's award and other external funding schemes, please visit:

www.mace.manchester.ac.uk/study/postgraduate-research/funding

CONTACTS

Research programme enquiries

+44 (0)161 275 4345

pg-mace@manchester.ac.uk

www.manchester.ac.uk/mace

EUROPEAN LANGUAGES AND CULTURES

WHY MANCHESTER?

- We aim to give you the highest quality educational experience, where you are taught and guided by inspiring academics and highly sought after by employers
- We attract the best research and teaching talent; we aim to set the agenda both in terms of our research and the educational environment
- We develop collaborative partnerships, foster public engagement, contribute to widening participation, and develop teaching, research and knowledge exchange links in and beyond Manchester
- We welcome interdisciplinary and transnational doctoral projects in most areas and give you the option to work with two supervisors who have complementary specialist fields

See also *Translation and Intercultural Studies* page 124.

French Studies

We are one of the UK's oldest and largest centres for French and Francophone studies. Our award-winning academic staff are leading researchers in their fields and can offer you a wide range of expertise from the Early Modern period to the present, covering 'canonical' aspects of French and Francophone culture, as well as lesser-known but equally influential individuals, events and works. In particular, we have a strong and original focus on French and Francophone visual and performance culture, with specialists in theatre, art, illustration, photography, cinema, popular music and dance.

German Studies

We have a strong record of PhD success, many of our former students having gone on to academic careers at the Universities of Edinburgh, Leeds, Manchester, and the LSE, and others to careers in German academia (Universität Oldenburg, IDS Mannheim). We offer supervision on a wide range of topics in the culture and history of the German-speaking lands from the 18th to the 21st century, notably in literature, film, political, social, intellectual, and cultural history, including Holocaust and Jewish Studies, Turkish-German culture, culture and dictatorship, contemporary literature, and aspects of translation.

We also welcome interdisciplinary research projects.

Italian Studies

We undertake internationally recognised research and, in the 2008 Research Assessment Exercise, over half of our research was deemed to be world-leading or internationally excellent. You will get access to our outstanding facilities and resources, such as the John Rylands Library, which houses special collections including a world-class holding of early Italian printed books. You will enjoy a lively research culture through participation in a range of events, including interdisciplinary seminars, masterclasses, and regular research seminars. We have a strong supervisory record on lots of topics including: history, literature, linguistics, cultural history, history of the book, translation studies, visual culture, renaissance culture, Dante, and cinema studies.

Russian and Eastern European Studies

We have particular expertise in Russian, Polish and Balkan studies, covering cultures, histories and political developments in these countries and regions from the medieval period to the present day. Our cross-disciplinary research interests include literature, film, media and popular culture, intellectual history, memory studies, gender and sexuality, as well as post-communist transition. The Manchester Centre for Russian and Eurasian Studies facilitates collaboration in research and postgraduate supervision. Our academics and postgraduates are also actively engaged in the initiatives of the national Centre for East European Language-Based Area Studies, which is funded by the Arts and Humanities Research Council and the British Academy.

Spanish, Portuguese and Latin American Studies

We are the leading institution in the UK for Spanish, Portuguese and Latin American Studies, and you will be supervised by leading figures in the field. Our experts actively engage with the trans-regional and transnational exchanges between local communities, nations and regions, not least those established between Europe and the wider Atlantic world. Our cross-disciplinary research interests include literature and film, visual and urban cultures, colonial and post-colonial histories, intellectual and cultural theory, cultural studies, and sexuality and gender. You will form part of an internationally diverse and engaged body of

EUROPEAN LANGUAGES AND CULTURES CONTINUED

students, who participate actively in research activities, and we have great links with Manchester-based organisations like Instituto Cervantes and the Cornerhouse Cinema.

Latin American and Caribbean Studies

We are the leading institution in the UK with top academics in the field. We make a significant contribution to the Centre for Latin American and Caribbean Studies at Manchester, which promotes and fosters research in language-based area studies across the Faculty, giving us a unique edge in terms of research into Latin America and the Caribbean, an area that remains vitally important for understanding contemporary processes of cultural, political and economic globalisation. You will form part of an active group of internationally diverse postgraduate students with access to a vibrant collaborative research, which brings together academics and students working in Social Anthropology, Politics, Sociology, History, Architecture and the Global Urban Research Centre.

MASTER'S COURSES

MA Conference Interpreting

FT / PT

MA Languages and Cultures (Research Route)

FT / PT

MA Translation and Interpreting Studies

FT / PT

RESEARCH PROGRAMMES

MPhil/PhD French Studies

FT / PT

MPhil/PhD German Studies

FT / PT

MPhil/PhD Italian Studies

FT / PT

MPhil/PhD Latin American Cultural Studies

FT / PT

MPhil/PhD Polish Studies

FT / PT

MPhil/PhD Portuguese Studies

FT / PT

MPhil/PhD Russian Studies

FT / PT

MPhil/PhD Spanish Studies

FT / PT

FUNDING

MA funding:

www.manchester.ac.uk/alc/fees/postgraduate-taught-funding

PhD funding:

www.manchester.ac.uk/alc/fees/postgraduate-research-funding

CONTACTS

Master's enquiries

+44 (0)161 275 3144

MASALC@manchester.ac.uk

www.manchester.ac.uk/alc/apply/postgraduatetaught

Research programme enquiries

+44 (0)161 275 3559

PhDSALC@manchester.ac.uk

www.manchester.ac.uk/alc/apply/postgraduateresearch

GEOGRAPHY

WHY MANCHESTER?

- We are ranked sixth in the UK and eighth in the world for Geography studies
- You will be taught by passionate and experienced experts with strong links throughout the industry, providing excellent opportunities for work placements and graduate employment prospects
- You will benefit from brand-new physical geography laboratories, cutting-edge computer software and one of the UK's best university libraries
- We have an excellent graduate employment record with some of our graduates appointed to chairs at leading universities across the world, while others shape policy through their work at government agencies, research institutes and activist organisations

RAE SCORES

4* 15% 3* 50% 2* 30% 1* 5%

Geography has been taught at Manchester for over a century and today forms part of our School of Environment, Education and Development. We were ranked eighth in the world and sixth in the UK for Geography in the QS World Rankings 2013. You will be located in a modern building equipped with custom-built geography laboratories, IT clusters and student common room.

We have been rated excellent for teaching and produce research of global excellence, with 65% of our research activity defined as world leading or internationally excellent in the 2008 RAE. Our international research expertise crosses diverse areas, such as economic geography, urban geography, political ecology, environmental change, upland hydrology, geographical information systems, geoarchaeology and water management.

We integrate our postgraduate programmes into our overall research ethos, which aims to produce both theoretically and policy-relevant contributions to geographical knowledge.

MASTER'S COURSES

MSc Environmental Geography
FT / PT

MSc Environmental Monitoring, Modelling and Reconstruction
FT / PT

MSc Geographical Information Science
FT / PT

RESEARCH PROGRAMMES

PhD Geography: Human Geography
FT / PT

PhD Geography: Physical Geography
FT / PT

CONTACTS

Master's enquiries

+44 (0)161 275 0969

seed.admissions@manchester.ac.uk

www.manchester.ac.uk/geography

Research programme enquiries

+44 (0)161 275 0969

seed.admissions@manchester.ac.uk

www.manchester.ac.uk/geography

HISTORY

WHY MANCHESTER?

- You will benefit from supervision by internationally excellent researchers, whether your interests are in early medieval European monarchy, in 16th century print culture or in late 20th century cities.
- Your research will be underpinned by one of the UK's most innovative and interdisciplinary research training programmes in the humanities: artsmethods@manchester
- We have the UK's third-largest university library, including the world-famous special collections of the John Rylands Library
- We promote the employability of our doctoral graduates by encouraging outward-facing research and public engagement, notably through our researchers-in-residence scheme

RAE SCORES

4* 20% 3* 40% 2* 30% 1* 10%

You will be able to draw on the expertise of 34 established members of staff in History, in addition to a similar number of historians working in other departments and research institutes across the University.

Our research interests stretch from the early middle ages to the end of the 20th century, and our geographical range includes Britain, continental Europe, South and East Asia, Africa and the Americas.

We offer specialist knowledge in a broad range of methodological, theoretical, thematic and interdisciplinary approaches to history, and have a strong commitment to outward-facing research and public engagement.

MASTER'S COURSES

MA History
FT / PT

MA Medieval Studies
FT / PT

RESEARCH PROGRAMMES

MPhil/PhD Economic and Social History
FT / PT

MPhil/PhD History
FT / PT

FUNDING

MA funding:
www.manchester.ac.uk/alc/fees/postgraduate-taught-funding

PhD funding:
www.manchester.ac.uk/alc/fees/postgraduate-research-funding

CONTACTS

Master's enquiries
+44 (0)161 275 3144
MASALC@manchester.ac.uk
www.manchester.ac.uk/alc/apply/postgraduatetaught

Research programme enquiries
+44 (0)161 275 3559
PhDSALC@manchester.ac.uk
www.manchester.ac.uk/alc/apply/postgraduateresearch

HUMANITARIANISM, CONFLICT RESPONSE AND PEACE-BUILDING

WHY MANCHESTER?

- We give you the opportunity to engage first hand with the people, projects and organisations that shape humanitarian, global health, conflict response and intervention issues around the world
- We offer an inclusive approach to humanitarian education that mirrors the reality of aid operations and informs both analytical and applied disciplines
- You will also benefit from access to practitioners who have been the key movers and shakers within the humanitarian sector
- We develop a scholarly and professional agenda for humanitarians around the world, and provide robust, informed education for practitioners at every level

Our Humanitarian and Conflict Response Institute offers high-quality postgraduate training on the impact and outcomes of contemporary and historical crises. We are widely recognised as one of the leading international research organisations focusing on the study of humanitarianism and conflict response.

Our cohort of noted professors and accomplished academics carry out cutting-edge humanitarian research. Some of the most recognised names in the field run postgraduate lectures and seminars, providing up-to-date learning on humanitarian issues that is highly relevant to the field.

Our work supports policy and decision-makers and is helping to increase understanding and debate within the field. Also, by bringing together the disciplines of medicine and the humanities to achieve our goals, we are facilitating improvements in crisis response on a global scale and providing a much-needed centre of excellence for professionals in emergencies and conflicts.

MASTER'S COURSES

MA Disaster Management
FT / PT

PGDip Global Health
FT / PT

BSc Global Health
(1 year for intercalating Medics)

MA Humanitarianism and Conflict Response
FT / PT

MA Peace-Building
FT / PT

RESEARCH PROGRAMMES

PhD Humanitarianism and Conflict Response
FT / PT

FUNDING

We have been consistently successful in securing ESRC / Doctoral College funding. In addition, we have also secured funding on collaborative research projects with the Red Cross and MAG.

CONTACTS

Master's enquiries

+44 (0)161 275-5728
kirsten.howarth@manchester.ac.uk

Research programme enquiries

+44 (0)161 275 3559
PhDSAC@manchester.ac.uk
www.manchester.ac.uk/alc/apply/postgraduateresearch



INTERNATIONAL DEVELOPMENT (IDPM)

WHY MANCHESTER?

- Our Institute of Development Policy and Management (IDPM) is the UK's largest university-based postgraduate centre specialising in international development and one of the world's leading centres for training and research on international development issues
- We are renowned internationally for our teaching and quality research and we address some of the most pressing and immediate global problems
- We have a large and diverse postgraduate population and alumni network that stretches around the world
- Our graduates are employed by the world's major development agencies and universities in roles such as government ministers, policy-makers, economists and civil servants

RAE SCORES

4* 20% 3* 45% 2* 35% 1* 10%

We promote social and economic development and the reduction of poverty by enhancing the capabilities of individuals and organisations through education, research and policy analysis, particularly within lower-income countries and for disadvantaged groups.

Our teaching and research are of the highest quality; in the most recent Research Assessment Exercise (RAE 2008), 65% of our research activity was judged to be 'world leading' or 'internationally excellent'.

We offer the services of a wide range of people specialising in development theory, the practical problems of policy formulation, planning and management, and the context of international development – all backed up by specialist library and computing facilities and more than 50 years of institutional experience.

MASTER'S COURSES

MSc Competition, Regulation and Development
FT / PT

MSc Development Economics and Policy
FT / PT

MSc Development Finance
FT / PT

MSc Human Resource Development (International Development)
FT / PT

MSc Human Resource Management (International Development)
PT / FT

MSc Human Resource Management and Development (International Development) by Distance Learning
PT / DL

MSc ICTs for Development
FT / PT

MSc International Development
FT / PT

MSc International Development: Globalisation, Trade and Industry
FT / PT

MSc International Development: Politics, Governance and Development Policy
FT / PT

MSc International Development: Development Management
FT / PT

MSc International Development: Environment, Climate Change and Development
FT / PT

MSc International Development: Public Policy and Management
FT/PT

**MSc International Development: Poverty,
Conflict and Reconstruction**

FT / PT

**MSc International Development: Poverty,
Inequality and Development**

FT / PT

**MSc Management and Implementation
of Development Projects**

FT / PT

**MSc Management and Information Systems:
Change and Development**

FT / PT

**MSc Management and Information Systems:
Change and Development (Distance Learning)**

PT

MSc Organisational Change and Development

FT / PT

RESEARCH PROGRAMMES

PhD Development Policy and Management

FT / PT

CONTACTS

Master's enquiries

+44 (0)161 275 0969

seed.admissions@manchester.ac.uk

www.manchester.ac.uk/idpm

Research programme enquiries

+44 (0)161 275 0969

seed.admissions@manchester.ac.uk

www.manchester.ac.uk/idpm

LAW

WHY MANCHESTER?

- We have over 140 years' experience in providing high-quality and international-focussed legal education, and we have one of the broadest ranges of specialisms in the UK including criminology, health care ethics, bioethics and medical law
- Our research has shaped policy-making and practice in diverse areas, from national healthcare guidelines, to influencing police procedures in countries such as Norway, Australia and Brazil
- We were placed 41st in the world, 7th in Europe and 5th in the UK in the 2013 Shanghai Jiao-Tong World University Rankings
- In the *Times Higher Education* World University Rankings 2012/13 we were placed 47th in the world, 11th in Europe and 7th in the UK

RAE SCORES

4* 10% 3* 40% 2* 40% 1* 10%

Law

You will have the chance to select from a wide range of legal study areas to develop a course that combines a thorough grounding in core legal principles with specialist knowledge in chosen areas. Or you could study in greater depth with one of our specialised areas of law.

Criminology

Our innovative, interdisciplinary programmes focus on current trends and historical debates surrounding key issues of crime causation, crime control and regulation.

Healthcare

The continuing advancement of modern health care and medicine gives rise to an increasing number of controversial ethical issues. These are the issues that we seek to address, not only with our research, but by offering taught courses and research programmes in the areas of health care ethics, bioethics and medical law, allowing you to explore the answers to some of today's most debated questions.

MASTER'S COURSES

LLM Corporate Governance
FT

LLM Intellectual Property Law
FT

LLM International Business and Commercial Law
FT

LLM International Financial Law
FT

LLM International Trade Transactions
FT

LLM Law
FT

MSc Healthcare Ethics and Law (Intercalated)
FT

MA Healthcare Ethics and Law (Distance Learning)
PT / DL

LLM Healthcare Ethics and Law
FT / PT

MA Healthcare Ethics and Law
FT / PT

PGCert Healthcare Ethics
FT / DL

PGCert Healthcare Law
FT / DL

LLM Public International Law
FT / PT

MA/LLM Security and International Law
FT / PT

LLM Transnational Dispute Resolution
FT / PT

MA/MRes/PGDip Criminology
FT / PT

RESEARCH PROGRAMMES

PhD Bioethics and Medical Jurisprudence
FT / PT

MPhil/PhD Criminology
FT / PT

MPhil/PhD Law
FT / PT

FUNDING

We offer a range of bursary and scholarship opportunities for students continuing their education with a taught postgraduate course. For more information see:
www.law.manchester.ac.uk/fees/postgraduate-taught

We also receive money from a range of sources to help our postgraduate researchers fund their studies. For more information see:
www.law.manchester.ac.uk/fees/postgraduate-research

CONTACTS

Master's enquiries

+44 (0)161 306 1270

pg-law@manchester.ac.uk

www.law.manchester.ac.uk/law/postgraduate-taught

Research programme enquiries

+44 (0)161 306 1279

research-law@manchester.ac.uk

www.law.manchester.ac.uk/postgraduate-research

LIFE SCIENCES

WHY MANCHESTER?

- We have state-of-the-art research facilities, including bioimaging, electron microscopy, flow cytometry, mass spectrometry, bioinformatics, histology and x-ray crystallography. All facilities are maintained by expert technical staff who also provide training and guidance
- You will get bespoke skills as well as training and progression monitoring via our Graduate Training Programme; each training element will facilitate and compliment the more specific research training that you will receive from your supervisor
- We aim to recruit and train the brightest graduates in the context of biosciences; as such, we maintain strong industry links and offer a number of placements and project opportunities

RAE SCORES

Biological Sciences

4* 25% 3* 40% 2* 30% 1* 5%

Pre-Clinical and Human Biological Sciences

4* 20% 3* 45% 2* 35 1* 0%

Our postgraduate opportunities span all fields of life sciences, from the molecule in a cell, to the whole organism and environment. We are one of Europe's largest and most successful research and teaching organisations of its kind, with over 28,000m² of research space. We proudly foster a scientific culture in which there are no traditional barriers between research disciplines. Shared expertise and the development of new technologies enable us to approach important bioscience problems using novel and innovative methods.

MASTER'S COURSES

MSc Applications in Environmental Science
FT

MSc Biochemistry
FT

MSc Bioinformatics and Systems Biology
FT

MRes Biological Sciences
FT

MSc Biotechnology and Enterprise
FT

MSc Cancer Research and Molecular Biomedicine
FT

MSc Cell Biology
FT

MSc Developmental Biology
FT

MSc History of Science, Technology and Medicine (including Science Communication)
FT

MRes Integrative Biology
FT

MSc Neuroscience
FT

MSc Plant Sciences
FT

RESEARCH PROGRAMMES**MPhil/PhD Adaptive Organismal Biology**

FT / PT

MPhil/PhD Animal Biology

FT / PT

MPhil/PhD Bioarchaeology

FT / PT

MPhil/PhD Biochemistry

FT / PT

MPhil/PhD Bioinformatics

FT / PT

MPhil/PhD Biomolecular Science

FT / PT

MPhil/PhD Biotechnology

FT

PhD Biotechnology and Enterprise

FT / PT

MPhil/PhD Cell Biology

FT / PT

MPhil/PhD Cell Matrix Research

FT / PT

MPhil/PhD Channels and Transporters

FT / PT

MPhil/PhD Developmental Biology

FT / PT

MPhil/PhD Environmental Biology

FT / PT

MPhil/PhD Evolutionary Biology

FT / PT

MPhil/PhD Gene Expression

FT / PT

MPhil/PhD Genetics

FT / PT

MPhil/PhD History of Science, Technology and Medicine

FT / PT

MPhil/PhD Immunology

FT / PT

MPhil/PhD Integrative Neurobiology and Behaviour

FT / PT

MPhil/PhD Membrane Trafficking

FT / PT

MPhil/PhD Microbiology

FT / PT

MPhil/PhD Molecular and Cellular Neuroscience

FT / PT

MPhil/PhD Molecular Biology

FT / PT

MPhil/PhD Molecular Cancer Studies

FT / PT

MPhil/PhD Neuroscience

FT / PT

MPhil/PhD Ophthalmology

FT / PT

MPhil/PhD Optometry

FT / PT

MPhil/PhD Organelle Function

FT / PT

MPhil/PhD Pharmacology

FT / PT

MPhil/PhD Physiology

FT / PT

MPhil/PhD Plant Sciences

FT / PT

MPhil/PhD Science Ethics

FT / PT

LIFE SCIENCES CONTINUED

MPhil/PhD Stem Cell Research

FT / PT

MPhil/PhD Structural Biology

FT / PT

MPhil/PhD Systems Neuroscience

FT / PT

MPhil/PhD Toxicology

FT / PT

FUNDING

We offer a range of funding opportunities for PhD studentships, from BBSRC, Wellcome Trust and other Doctoral Training Centres and programmes. We also offer a number of scholarships and awards for outstanding students.

MSc/MRes funding:

www.ls.manchester.ac.uk/masterscourses/funding

PhD funding:

www.ls.manchester.ac.uk/phdprogrammes/funding

CONTACTS

Master's enquiries

Faculty of Life Sciences Recruitment and Admissions Office

+44 (0)161 275 5032

pgtaught.lifesciences@manchester.ac.uk

www.ls.manchester.ac.uk/masterscourses

Research programme enquiries

Faculty of Life Sciences Postgraduate Research Office

+44 (0)161 275 5608

pgresearch.lifesciences@manchester.ac.uk

www.ls.manchester.ac.uk/phdprogrammes

MANCHESTER BUSINESS SCHOOL

WHY MANCHESTER?

- We are one of the top 50 business schools in the world and one of the top 6 in the UK
- We were the UK's first business school (established 1965) and we are now the largest campus-based business and management school
- Our doctoral programme has been ranked first in the world in five of the last six years in the *Financial Times* Global MBA ranking
- We are one of only 1% of triple-accredited business schools in the world (AACSB International, AMBA – Association of MBAs, and EQUIS)

RAE SCORES

4* 25% 3* 40% 2* 30% 1* 5%

2015 marks our 50th anniversary – we were jointly the first business school in the UK. A Manchester master's is the next step to realising your ambitions and getting you noticed. Our master's courses provide you with the skills to think with originality, give you the chance to mix with students from over 70 nations, and help you shape your career in the direction of your choice.

At Manchester Business School we pride ourselves on our challenging, life-changing MBA programmes that attract high-calibre students from prestigious companies around the world. You can also choose to study full-time or part-time.

Our doctoral programme is one of the most highly respected across the globe and continues to attract outstanding students of the highest calibre. You will join our community of over 300 academic and research staff.

We adopt an international perspective across all our programmes, so you will learn to work with different cultures. Our links with over 35 international institutions also gives our students on the MBA and on two of our MSc courses the opportunity to spend a semester abroad. Some of our master's courses are accredited by professional bodies, such as the Chartered Institute of Personnel and Development (MSc Human Resource Management and Industrial

Relations courses), and the British Psychological Society (MSc Organisational Psychology course). The Chartered Financial Analyst Institute has awarded partnership status to MSc Accounting and Finance and MSc Finance.

MASTER'S COURSES

MSc Accounting and Finance

FT

MSc Business Analysis and Strategic Management

FT

MSc Business Analytics: Operational Research and Risk Analysis

FT

MSc Corporate Communications and Reputation Management

FT

MSc Finance

FT

MSc Finance and Business Economics

FT

MSc Human Resource Management and Comparative Industrial Relations (International)

FT

MSc Human Resource Management and Industrial Relations

FT

MSc Innovation Management and Entrepreneurship

FT / PT

MSc International Business and Management

FT

MSc Management

FT

MSc Managerial Psychology

FT / PT

MANCHESTER BUSINESS SCHOOL CONTINUED

MSc Marketing

FT

MEnt Master of Enterprise

FT / PT

MSc Operations, Project and Supply Chain Management

FT

MSc Organisational Psychology

FT / PT

MSc Quantitative Finance: Financial Engineering

FT

MSc Quantitative Finance: Risk Management

FT

The Manchester Full-Time MBA Programme

(3 years of professional experience required)

FT

MBA Manchester Global

(4+ years of professional experience required with a degree)

PT

MBA Manchester Global Executive

(8+ years of professional experience required with a degree)

PT

RESEARCH PROGRAMMES

MPhil/PhD Accounting and Finance

FT / PT

MPhil/PhD Business and Management

FT / PT

DBA Doctor of Business Administration

PT

FUNDING

We have a number of scholarships available across our MBA and master's programmes. Scholarships are highly competitive and are often awarded to the strongest academic applicants.

MBS offers around 15 studentships from the ESRC and the University, which normally provide full tuition fees and spend for our doctoral students.

CONTACTS

Master's enquiries

+44 (0)161 306 1339

pg@mbs.ac.uk

www.manchester.ac.uk/study/masters

Research programme enquiries

+44 (0)161 275 1200

pgresearch@mbs.ac.uk

www.manchester.ac.uk/study/postgraduate-research

Full-time MBA enquiries

+44 (0)161 275 6414

mba@mbs.ac.uk

www.mbs.ac.uk/mba/full-time

Part-time Global MBA enquiries

+44 (0)161 275 7212

global@mbs.ac.uk

www.mbs.ac.uk/mba/part-time

Global Executive MBA enquiries

+44 (0)161 275 7212

gemba@mbs.ac.uk

www.mbs.ac.uk/mba/executive

Master of Enterprise enquiries

+44 (0)161 306 8484

enterprise@mbs.ac.uk

www.mbs.ac.uk/mec

MATERIALS

WHY MANCHESTER?

- We have national research centres in composites, energy materials, performance of materials and imaging of materials, giving us a unique capability to process and analyse materials of all types
- Access to state-of-the-art research facilities, including an electron microscopy suite, advanced mechanical testing equipment, nanofabrication equipment and cell culture laboratories
- Exceptional breadth of research and training in materials engineering, science and technology, and in cutting-edge textile design and fashion business

RAE SCORES

4* 20% 3* 60% 2* 15% 1* 5%

We encompass a unique and exceptional breadth of research and training in materials engineering, science and technology.

Industry drives the development of our programmes, ensuring a sought-after qualification with transferable skills to prepare you for your chosen career. Our graduates enjoy challenging careers in industry and academia, and we invite many to work alongside us in our strategic development, ensuring that we retain our international standing as a centre of excellence and innovation in the materials sector.

MASTER'S COURSES

MSc Advanced Engineering Materials
FT

MSc Biomaterials
FT

MSc Corrosion Control Engineering
FT

**MSc International Fashion Retailing
(including Business Improvement and
Multichannel Marketing pathways)**
FT

MSc Polymer Materials Science and Engineering
FT

MSc Textile Technology (Technical Textiles)
FT

RESEARCH PROGRAMMES

**MPhil/MSc by Research/PhD Biomedical
Materials**
FT

**MPhil/MSc by Research/PhD Ceramics and
Glasses**
FT

MSc by Research/PhD Composite Materials
FT

**MPhil/MSc by Research/PhD Corrosion and
Protection**
FT

PhD Materials
FT

MPhil/MSc by Research/PhD Metallic Materials
FT

**MPhil/MSc by Research/PhD Nanostructured
Materials**
FT

MPhil/MSc by Research/PhD Paper Science
FT

**MPhil/MSc by Research/PhD Polymer Science
and Engineering**
FT

MSc by Research Technical Textiles
FT

**MPhil/MSc by Research/PhD Textile Design,
Fashion and Management**
FT

MEnt Textiles and Fashion
FT

CONTACTS

Master's enquiries

+44 (0)161 306 3559

pg-materials@manchester.ac.uk

www.materials.manchester.ac.uk/study/postgraduate-taught

Research programme enquiries

+44 (0)161 306 3559

pg-materials@manchester.ac.uk

www.materials.manchester.ac.uk/study/postgraduate-research

MATHEMATICS

WHY MANCHESTER?

- We ranked sixth highest in the country in the most recent Research Assessment Exercise (RAE 2008), based on the 'research power' ratings of our three disciplines: Pure Mathematics, Applied Mathematics, and Statistics and Operational Research
- Through the Manchester Institute for Mathematical Sciences, we host an extensive programme of research seminars from a wide range of speakers, providing ample opportunity for furthering knowledge and discussing current research from all areas of mathematics
- We disburse around £1 million per annum towards the funding of our postgraduate students, including over £500,000 of EPSRC funding, and substantial funding from other institutions, including the European Commission
- We have a range of new scholarships available for MSc students

RAE SCORES

Applied Maths

4* 25% 3* 35% 2* 40% 1* 0%

Pure Maths

4* 20% 3* 40% 2* 35% 1* 5%

Statistics

4* 20% 3* 35% 2* 30% 1* 15%

We are a major international research centre that covers the entire breadth of the subject, including pure and applied mathematics, probability and statistics. We have a long and distinguished history in both teaching and research, and our graduates are influential in many spheres of activity worldwide. We are proud of our lively and diverse postgraduate community and aim to attract the very best mathematicians to Manchester from all over the world.

MASTER'S COURSES

MSc Actuarial Science

FT / PT

MSc Applied Mathematics

FT / PT

MSc Applied Mathematics with Industrial Modelling

FT / PT

MSc Applied Mathematics with Numerical Analysis

FT / PT

MSc Mathematical Finance

(offered jointly with Manchester Business School)

FT

MSc Pure Mathematics and Mathematical Logic

FT / PT

MSc Statistics

FT / PT

MSc Statistics (Financial Statistics)

FT / PT

RESEARCH PROGRAMMES

PhD Actuarial Science

FT / PT

PhD Applied Mathematics

FT / PT

PhD Financial Mathematics

FT / PT

PhD Mathematical Logic

FT / PT

MPhil Mathematical Sciences

FT

PhD Numerical Analysis

FT / PT

PhD Probability

FT / PT

PhD Pure Mathematics

FT / PT

PhD Statistics

FT / PT

FUNDING

Details of funding opportunities are available at:
www.maths.manchester.ac.uk/study/postgraduate/fees-and-funding

CONTACTS

Master's enquiries

+44 (0)161 275 0174

pgt-maths@manchester.ac.uk

www.maths.manchester.ac.uk/study/postgraduate

Research programme enquiries

+44 (0)161 275 0178

pgr-maths@manchester.ac.uk

www.maths.manchester.ac.uk/study/postgraduate

MECHANICAL ENGINEERING

WHY MANCHESTER?

- We are one of the largest schools in Europe incorporating mechanical, aerospace and civil engineering, and our research is curiosity driven and industry inspired
- We ranked third in the UK for engineering and technology in the Shanghai Jiao Tong league table in 2012
- We have over 200 years' expertise in teaching engineering and many of our graduates achieve excellence on a worldwide stage
- We have strong teaching and research links with over 300 companies, including industrial links with Airbus, Rolls-Royce, EADS, DSTL, MBDA, and ESTEC/ESA

RAE SCORES

4* 20% 3* 50% 2* 30% 1* 0%

You will obtain a thorough understanding of engineering principles coupled with excellent practical and personal transferable skills. Our graduates are held in high regard by industry, finding rewarding work in all engineering sectors.

Mechanical engineering concerns the design, construction and use of mechanical devices. This covers a broad range of machines, such as internal combustion engines, aircraft engines, industrial equipment and manufacturing plants.

We are committed to providing you with the best experience and, as well as teaching, we will support you with an intensive induction programme, research seminars and career development programmes. Our PhD students have a dedicated space in our new state-of-the-art research villages.

We collaborate extensively with industry, city councils and government organisations, not only in terms of research and collaborative work but also in the design and content of all taught courses.

MASTER'S COURSES

MSc Advanced Manufacturing Technology and Systems Management

FT

MSc Mechanical Engineering Design

FT

MSc/PGDip Reliability Engineering and Asset Management

FT / PT

PGCert Reliability Engineering and Asset Management

PT / DL

MSc Thermal Power and Fluid Engineering

FT

RESEARCH PROGRAMMES

MPhil/PhD Mechanical Engineering

FT / PT

MSc by Research Mechanical Engineering

FT

MPhil/PhD Nuclear Engineering

FT / PT

FUNDING

For more about funding opportunities, including The University of Manchester's Presidential Doctoral Awards (PDS), the Dean's award and other external funding schemes, please see: www.mace.manchester.ac.uk/study/postgraduate-research/funding

CONTACTS

Master's enquiries

+44(0)161 306 9219

pg-mace@manchester.ac.uk

www.manchester.ac.uk/mace

Research programme enquiries

+44(0)161 275 4345

pg-mace@manchester.ac.uk

www.manchester.ac.uk/mace

MEDICAL SCIENCES

WHY MANCHESTER?

- Our Faculty Graduate School is a hub for our postgraduate community involved in a diverse range of study, from short-term professionally linked programmes through to research training in multidisciplinary areas
- Our master's and diploma courses provide cutting-edge professional training to aid your career development in the health sciences
- We act as the north-west hub for 'Vitae', providing an outstanding network of early-career researchers with whom you can share advice and good practice
- We provide research settings that give you scope to network with fellow PhD students and postdoctoral colleagues, in addition to your immediate supervisory team

Our postgraduate taught courses provide cutting-edge professional training to aid career development. We offer certificate/diploma options to allow health professionals to gain intensive grounding in healthcare subjects. Our Master of Research (MRes) programmes are designed to give you a real taste of research and what is required of a professional researcher.

The research training we provide (MPhil/MD/PhD) reflects our dedication to improving understanding of disease processes, diagnosis and enhanced patient care. From investigating the origins of diseases at molecular level through to identifying pharmacological and health service interventions, our postgraduate researchers play a pivotal role. We encourage you to have authorship on eminent publications, attend conferences and actively engage with the wider research community in order to improve your skills development and career prospects.

MASTER'S COURSES

MSc Advanced Practice in Forensic Mental Health

FT / PT

MSc/PGDip/PGCert (AHMP) Applied Mental Health

PT

MRes Cardiovascular Health and Disease

FT

MSc Clinical Biochemistry

FT

MClin Res/PGDip Clin Res/PGCert Clin Res Clinical Research

FT / PT *see Nursing and Midwifery page 109*

MSc Clinical Rheumatology

PT

MSc/PGDip Forensic Psychology and Mental Health

FT *subject to approval*

MSc Genetic Counselling

FT

MRes Genetic Medicine

FT

MA/PGDip Healthcare Ethics and Law

* (run jointly with our School of Law)

FT / PT **see Law page 90*

MSc Investigative Ophthalmology and Vision Science

FT / PT

MRes Maternal and Fetal Health

FT

MSc/PGDip/PGCert Medical Education

PT

MSc/PGDip Medical Imaging

FT / PT

MEDICAL SCIENCES CONTINUED

MSc/PGDip Medical Microbiology

FT / PT

MSc/PGDip/PGCert Medical Mycology

FT / PT

MRes Medical Sciences

FT

MSc/PGDip Medical Virology

FT / PT

**MSc/PGDip/PGCert Occupational Hygiene
(Blended Learning)**

PT

**MSc/Advanced PGDip/PGCert Occupational
Medicine (Blended Learning)**

PT

MRes Oncology

FT

MRes Primary Care

FT / PT / DL

MRes/MPH/PGDip/PGCert Public Health

FT / PT / DL

MSc/PGDip Skin Ageing and Aesthetic Medicine

PT

**MRes Tissue Engineering for Regenerative
Medicine**

FT

**MRes/PGCert Translational Medicine:
Interdisciplinary Molecular Medicine**

FT

RESEARCH PROGRAMMES**MPhil/MD/PhD Medicine**

FT / PT

FUNDING

We offer a number of tuition fee bursaries for our master's courses. Further details can be found on our website: www.mhs.manchester.ac.uk/postgraduate

We offer a number of funded studentships for our research programmes. Our current students are funded by BHF, ERC, MRC, BBSRC, NIHR and Wellcome Trust.

Funded PhD project opportunities can be found online: www.mhs.manchester.ac.uk/postgraduate/studentships

CONTACTS**Master's enquiries**

+44 (0)161 275 5688

pgt.medicine@manchester.ac.ukwww.mhs.manchester.ac.uk/postgraduate/programmes/taughtmasters**Research programme enquiries**

+44 (0)161 275 5688

pg.medicine@manchester.ac.ukwww.mhs.manchester.ac.uk/postgraduate/programmes/research/medicine

MENTAL HEALTH

WHY MANCHESTER?

- We aspire to provide the highest quality experience for postgraduate students by utilising clinical, research and teaching expertise
- We put emphasis on skills training equipped to prepare you for an array of positions
- Our Faculty Graduate School is a hub for our postgraduate community involved in a diverse range of study, from short-term professionally linked programmes through to research training in multidisciplinary areas
- We encourage networking and sharing of good practice - giving you the opportunity to meet, organise specific training, or offer an alternative working environment

RAE SCORES

4* 5% 3* 45% 2* 40% 1* 10%

We provide the highest quality experience for postgraduate students. Within our wide range of mental health related training, most postgraduate programmes are aimed at health and social work professionals already working in mental health.

We achieve this by utilising the clinical, research and teaching expertise within the Institute to deliver a range of taught postgraduate courses, short professional courses and research training. The Institute places particular importance on translating research into practice through accredited and professional training.

MASTER'S COURSES

MSc/PGDip Advanced Practice in Forensic Mental Health

FT / PT

MSc/PGDip/PGCert (AHMP) Applied Mental Health

PT

MSc Clinical and Health Psychology

FT

MSc/PGDip/PGCert APIMH Advanced Practice Interventions for Mental Health:

- Dementia Care pathway
- Primary Mental Health Care pathway
- Psychosocial Interventions for Psychosis (COPE) pathway

PT

RESEARCH PROGRAMMES

MPhil/MD/PhD Medicine

FT / PT

FUNDING

We offer a number of funded studentships for our research programmes. Our current students are funded by BBSRC, ERC, MRC and EPSRC.

Funded PhD project opportunities can be found online: www.mhs.manchester.ac.uk/postgraduate/studentships

CONTACTS

Master's enquiries

+44 (0)161 275 5688

pgt.medicine@manchester.ac.uk


www.mhs.manchester.ac.uk/postgraduate/programmes/taughtmasters

Research programme enquiries

+44 (0)161 275 5688

pg.medicine@manchester.ac.uk

www.mhs.manchester.ac.uk/postgraduate/programmes/research/medicine



“Research is always evolving – I started in developmental biology and now I’m working in disease process. I see that going on for quite a number of years, but surely it’ll evolve and we’ll find new things. Wherever that takes me, I hope I’ll still be in Manchester at that time.”

PROFILE

Dr Karen Piper-Hanley

Lecturer in Molecular Medicine

Ever-broadening horizons

Karen has supervised PhD, MRes and even BSc students across a range of medical research projects. She believes this breadth is something that she'd only be able to find at Manchester.

"Manchester has such a wonderful breadth of research. I moved up from The University of Southampton about five years ago. There were several universities which were becoming interested, but for me there was only one that I wanted to come to and that was Manchester.

"The standard of lecturers and the exposure to other researchers that you will find at Manchester is phenomenal. The fact we have Nobel Prize winners on our staff – even if they're outside your immediate research environment, you can't help but feel inspired by their stories.

"This is the place to come for facilities. They are run very well. Our Faculty is forward-thinking, you can see its vision – new things are always developing, and it'll try and get some funding to put some infrastructure together. The research facilities are wonderful and they are constantly being upgraded. You'll be working in some of the best labs in the country.

"My point of view is you have got to be interested in what you come here to do. When you're deciding on a course or programme, you've got to get out there and find something that's right for you. Knock on a few doors; have a look on our website and see who is running the course or research that you want to do. See if you can get involved in it – and if someone says "no" the first time round, then have another go! "

MIDDLE EASTERN STUDIES

WHY MANCHESTER?

- As a major concentration of high-quality research and teaching, we foster a vibrant postgraduate community and offer a wide range of master's courses and research opportunities
- We offer a wide range of internationally recognised research supervisory expertise, including Arab World Studies, Islamic Studies, Israel Studies, Hebrew Literature, classical Jewish Studies and Modern Iranian Studies
- Our experts in each area maintain a close dialogue, so we can offer supervisory teams that provide a genuine intercultural perspectives within and beyond Middle Eastern Studies
- Our graduates move on to careers in journalism, the Civil Service (MI5, Foreign Office, MoD, GCHQ), teaching, and business in the Middle East

RAE SCORES

4* **15%** 3* **45%** 2* **20%** 1* **15%**

In the last RAE, 60% of our research output was rated world leading or internationally excellent, so you will be supervised by academics at the forefront of their fields.

Interdisciplinary study within the subject area is common; however, we also collaborate closely with colleagues from Translation and Intercultural Studies, Social Anthropology, International Relations, Government Studies, the Humanitarian and Conflict Response Institute, the Centre for Jewish Studies, Religions and Theology, and Classics in the supervision of doctoral work.

You will join a vibrant group of international and national research students, and have access to the superb holdings of our University Library, including globally important manuscript collections and archives relating to all Middle Eastern languages.

We are home to the world-renowned *Journal of Semitic Studies*, and are a constitutive member of two research hubs, the Centre for the Advanced Study of the Arab World (with Edinburgh and Durham Universities) and the Centre for Jewish Studies.

MASTER'S COURSES

MA Conference Interpreting

FT / PT

MA Intercultural Communication

FT / PT

MA Languages and Cultures (Research Route)

FT / PT

MA Translation and Interpreting Studies

FT / PT

RESEARCH PROGRAMMES

PhD Arab World Studies

FT

MPhil/PhD Middle Eastern Studies

FT / PT

MPhil Translation and Intercultural Studies

FT

PhD Translation and Intercultural Studies

FT

FUNDING

MA funding:

www.manchester.ac.uk/alc/fees/postgraduate-taught-funding

PhD funding:

www.manchester.ac.uk/alc/fees/postgraduate-research-funding

CONTACTS

Master's enquiries

+44 (0)161 275 3144

MASALC@manchester.ac.uk

www.manchester.ac.uk/alc/apply/postgraduatetaught

Research programme enquiries

+44 (0)161 275 3559

PhDSALC@manchester.ac.uk

www.manchester.ac.uk/alc/apply/postgraduateresearch

MUSEOLOGY

WHY MANCHESTER?

- You will examine and discuss current and emerging museum practices with leading professionals and academics in the field
- You will undertake a work placement in a museum, gallery, or related cultural organisation in or around Manchester
- You will benefit from the rich museum and cultural scene of Manchester that offers our students opportunities for case studies, fieldwork and networking
- Our staff and students work very closely with the University's Manchester Museum and Whitworth Art Gallery, in work placements, practice-based learning and research projects

RAE SCORES

4* 40% 3* 40% 2* 15% 1* 5%

Our Centre for Museology is wholly dedicated to developing research and teaching in museum theory and practice. We work closely with the University's own museum and art gallery, and promote academic and professional collaboration with the museum profession locally, nationally and internationally.

We have been training museum professionals for over 40 years, and our Art Gallery and Museum Studies MA is one of the most popular courses of its kind in the UK. Today, our alumni work in senior positions in museums and galleries in Britain and overseas.

The Centre for Museology is now part of our Institute for Cultural Practices: a new centre for postgraduate and professional programmes that combine academic excellence with work-based training.

MASTER'S COURSES

MA Art Gallery and Museum Studies

FT / PT

Continuing Professional Development (CPD)

Modules from the MA Art Gallery and Museum Studies can be taken as standalone courses. These are suitable for early and mid-career professionals that would like to develop their knowledge and skills at a particular area of museum practice.

RESEARCH PROGRAMMES

PhD Museology

FT / PT

Professional Doctorate in Museum Practice

FT / PT

FUNDING

MA and PhD applicants may apply for School and University studentships and bursaries. Detailed information about funding opportunities can be found on the School of Arts, Language and Cultures website (www.alc.manchester.ac.uk).

CONTACTS

Master's enquiries

+44 (0)161 275 0322

MASALC@manchester.ac.uk

Research programme enquiries

+44 (0)161 275 3559

PhDSALC@manchester.ac.uk

Centre for Museology

www.manchester.ac.uk/museology

Twitter: @agms10

Facebook: www.facebook.com/centre4museology

MUSIC

WHY MANCHESTER?

- We are ranked first in both the *Complete University Guide* 2014 and the *Sunday Times* University League Table 2014, and joint 2nd out of 55 music departments in the UK according to the 2008 Research Assessment Exercise
- You will work with world-class academics from a wide range of sub-disciplines, from medieval to contemporary music cultures, analysis, ethnomusicology, instrumental/vocal composition, and electroacoustic composition
- Our facilities include the state-of-the-art NOVARS electroacoustic studios, the Martin Harris Centre and one of the country's leading research libraries
- We are located in one of the most culturally rich cities in the UK and we have strong links with a range of professional and community-based organisations

RAE SCORES

4* **50%** 3* **35%** 2* **10** 1* **5%**

Music is an exceptionally diverse discipline and we encourage you to explore this diversity to its full. Our staff include international leaders in musicology and ethnomusicology, together with award-winning composers. Our flexible postgraduate courses allow you to combine your special interests with a solid methodological foundation.

As a musicologist or ethnomusicologist, you will engage with the latest theoretical debates and explore interdisciplinary perspectives alongside conducting original research.

As a composer or sound artist, you will benefit from the liveliest performance culture of any UK music department and see your work brought to life by professional ensembles such as our resident Quatuor Danel, the BBC Philharmonic and MANTIS (Manchester Theatre in Sound).

MASTER'S COURSES

MusM Composition

FT / PT

MusM Electroacoustic Music Composition

FT / PT

MusM Musicology (including Ethnomusicology)

FT / PT

RESEARCH PROGRAMMES

MPhil/PhD Music (Composition)

FT / PT

MPhil/PhD Music (Electroacoustic Composition)

FT / PT

MPhil/PhD Music (Musicology/Ethnomusicology)

FT / PT

FUNDING

Numerous awards are offered by the Consortium, the University, the School of Arts, Languages and Cultures, and the subject area of Music for PhD and master's programmes. These range from full AHRC studentships to full-fees bursaries at the home/EU rate.

MA funding:

www.manchester.ac.uk/alc/fees/postgraduate-taught-funding

PhD funding:

www.manchester.ac.uk/alc/fees/postgraduate-research-funding

CONTACTS

Master's enquiries

+44 (0)161 275 3144

MASALC@manchester.ac.uk

www.manchester.ac.uk/alc/apply/postgraduatetaught

Research programme enquiries

+44 (0)161 275 3559

PhDSALC@manchester.ac.uk

www.manchester.ac.uk/alc/apply/postgraduateresearch

NURSING AND MIDWIFERY

WHY MANCHESTER?

- We have a well-established history of providing excellent nursing, midwifery and allied health care professional education and innovative research
- We are recognised as one of Europe's leading nursing education and research centres, providing a broad range of postgraduate post-qualifying courses and MPhil/PhD
- We work closely with a range of NHS trusts across Greater Manchester and the north-west region, providing excellent and varied facilities for clinical practice
- Our Graduate School acts as the hub for our postgraduate community involved in a diverse range of study, from short-term professionally linked programmes through to research training in multidisciplinary areas

RAE SCORES

4* 50% 3* 35% 2* 10 1* 5%

Our training programmes are recognised as internationally leading and we have the largest research portfolio of such schools in the UK and Europe. We attract considerable funding and publish widely in renowned international journals. In collaboration with our NHS partners, we ensure our diverse academic study opportunities keep pace of changes in health and social care policy and practice.

We place great emphasis on high-quality, applied research that supports the improvement of patient care and shapes UK health and social care policy and service provision. Some of our recent successes include running the successful EC-funded Prevention of Falls Network Europe, and testing and developing a range of self-help treatments for anxiety and depression in primary mental health care.

MASTER'S COURSES

MClin Res/PGDip Clin Res/PGCert Clin Res (Clinical Research)
FT / PT

MRes HSC/ PGDip Res HSC/ PGCert Res HSC (Health and Social Care)
FT / PT

MSc/PGDip/PGCert/APIMH Advanced Practice Interventions for Mental Health (pathways in Dementia Care, Mental Health and Psychosocial Interventions for Psychosis)
PT

(These courses are only available to staff who are employees of the NHS and related organisations)

A range of standalone course units are designed to enhance healthcare practitioners' knowledge and skills, enabling you to contribute to improvements in patient care and service development.

RESEARCH PROGRAMMES

MPhil/PhD Midwifery
FT / PT

MPhil/PhD Nursing
FT / PT

FUNDING

NIHR-funded studentships may be available to a limited number of successful candidates for the MClin Res. APIMH pathways are funded through a contract between the University and NHS North West.

Check website for specific funding arrangements:
www.nursing.manchester.ac.uk/postgraduate/taught

CONTACTS

Master's and research programme enquiries

+44 (0)161 306 0270

graduate.nursing@manchester.ac.uk

www.nursing.manchester.ac.uk/postgraduate/taught

www.nursing.manchester.ac.uk/postgraduate/research

PHARMACY

WHY MANCHESTER?

- We are one of the UK's leading centres for pharmacy research with 95% of our work classed as internationally significant in the most recent Research Assessment Exercise (RAE 2008)
- We offer innovative courses that can be completed by text-based, distributed learning
- We have developed a close working relationship with local hospitals, making joint appointments to the posts of clinical lectureships
- Our Graduate School is the hub for our postgraduate community involved in a diverse range of study, from short-term professionally linked programmes through to research training in multidisciplinary areas

RAE SCORES

4* 30% 3* 40% 2* 25% 1* 5%

Manchester Pharmacy School was established in 1883, and was the first in the UK, in 1904, to offer degrees in pharmacy. We offer a range of postgraduate courses, including a clinical diploma aimed at hospital pharmacists, a public health certificate, master's degree training aimed at industrial scientists, and PhD programmes in a variety of fields.

We house the Centre for Pharmacy Postgraduate Education (CPPE), which is a national provider of CPD programmes for pharmacists and pharmacy technicians across England.

We undertake world-leading research from basic pharmaceutical science through to applied pharmacy practice and multidisciplinary research with demonstrable impact for patients and the public. We are known nationally and internationally for our particular strengths in the areas of cancer biology and drug development, biofilms and infection, predictive and translational pharmacokinetics research on drug metabolism, prescribing and medicines safety, workforce planning, and evaluation of pharmacy services.

MASTER'S COURSES

PGDip Clinical and Health Services Pharmacy
PT

MSc/PGDip/PGCert Community Pharmacy Public Health Services
PT

MSc Modelling and Simulation in Pharmacokinetics and Pharmacodynamics (PKPD)
PT

MSc/PGDip Pharmaceutical Industrial Advanced Training (PIAT)
PT

RESEARCH PROGRAMMES

MPhil/PhD Pharmacy and Pharmaceutical Sciences
FT / PT

FUNDING

Every year the School is awarded approximately eight studentships by the research councils and the University that pay the home/EU fees and a stipend of £13,726 (subject to change). Some students are funded via industrial studentships.

CONTACTS

Master's enquiries

+44 (0)161 306 0604

pharmgrad@manchester.ac.uk

www.pharmacy.manchester.ac.uk/postgraduate/taught

Research programme enquiries

+44 (0)161 306 0604

pharmgrad@manchester.ac.uk

www.pharmacy.manchester.ac.uk/postgraduate/research

PHILOSOPHY

WHY MANCHESTER?

- We offer research-led teaching and supervision by internationally-recognised experts in a wide range of areas of analytical philosophy
- Our MRes and PhD programmes offer dedicated support in dissertation planning, research and presentation skills, while our master's courses offer small seminar-style classes with an emphasis on staff / student interaction
- We have a thriving postgraduate community with dedicated open plan office space within the Philosophy discipline area
- In the latest Research Assessment Exercise (RAE 2008), 95% of our research was considered to be of international standard and 45% was found to be internationally excellent or world-leading

RAE SCORES

4* 10% 3* 35% 2* 50% 1* 5%

Philosophical research covers the full range of subject areas, but we boast a special emphasis on aesthetics, history of analytic philosophy, metaphysics, philosophy and language, philosophy of mind and psychology. Together with colleagues in the Manchester Centre for Political Theory, we also offer significant research expertise in political philosophy.

As well as weekly research seminars, Philosophy at Manchester hosts a large number of international conferences, including recently: *The Idea of Evil* (2012); *The Foundations of Ontology* (2013); *Trust* (2014); *Collective Obligation* (2014); *Emotion and Social Cognition* (2014); *The Subjective Structure of Consciousness* (2014); *Knowledge of Emotion* (2015).

We are also home to a number of funded research projects, including: *BIOMOT [on Biodiversity]* (2011-15); *The Foundations of Ontology* (2011-14); *Knowledge of Emotion: Expression and Social Cognition* (2012-15); *The Architecture of Consciousness* (2012-17).

MASTER'S COURSES

MRes Philosophy

FT / PT

MA Political Science (Ethics and Political Philosophy)

FT / PT

RESEARCH PROGRAMMES

PhD Philosophy

FT / PT

FUNDING

MRes

The Stanley Jevons Postgraduate Loyalty Bursary gives a £1,500 fee reduction to University of Manchester graduates who received a 1st for their undergraduate degree.

In addition, we have up to ten MRes Philosophy Bursaries, which offer a fee reduction of £2,300 to outstanding graduates of any institution who received a 1st for their undergraduate degree (this cannot be taken in conjunction with the Stanley Jevons Bursary).

PhD

- AHRC studentships, available through the North West Consortium Doctoral Training Partnership
- School of Social Sciences studentships
- Goldie-Hamilton studentship

All of these pay the home/EU fees and a stipend of £13,726.

CONTACTS

Master's enquiries

+44 (0)161 275 1296

pg-soss@manchester.ac.uk

www.socialsciences.manchester.ac.uk/subjects/philosophy/postgraduate-taught

Research programme enquiries

+44 (0)161 275 4743

pg-soss@manchester.ac.uk

www.socialsciences.manchester.ac.uk/philosophy/postgraduate-research

PHYSICS AND ASTRONOMY

WHY MANCHESTER?

- One of the largest and most active schools of physics and astronomy in the UK, with over 150 academic and research staff, including two Nobel laureates.
- Ranked joint 2nd in the UK and joint 13th in the world, in the Academic Ranking of World Universities in Physics (ARWU), based on a wide range of measures of research performance
- Facilities which rival those of other leading universities worldwide including, Jodrell Bank Observatory and the Photon Science Institute
- Professors Andre Geim and Kostya Novoselov won the Nobel Prize for Physics 2010 for ground-breaking experiments regarding the two-dimensional material graphene

RAE SCORES

4* 20% 3* 35% 2* 30% 1* 15%

Our research is about more than citations in academic papers. We apply our expertise in order to find solutions to the great challenges society faces. We strive to shape the international agenda in collaboration with our partners in industry, government and academia.

We are organised into four research divisions, which span the breadth of physics: Theoretical Physics; Accelerator, Nuclear and Particle Physics; Condense Matter, Atomic and Biological Physics; Jodrell Bank Centre for Astrophysics and the Jodrell Bank Observatory.

We have a strong presence in a number of Manchester-based centres for multidisciplinary research, including the Photon Science Institute, the Centre for Nonlinear Dynamics, Dalton Nuclear Institute, and the Mesoscience and Nanotechnology Centre. Our world-leading facilities include the famous Lovell Telescope and the e-MERLIN/VLBI National Facility. The Square Kilometre Array (SKA) Organisation Headquarters is hosted at Jodrell Bank Observatory.

MASTER'S COURSES

MSc/PGDip/PGCert Nuclear Science and Technology*
FT / PT / DL

RESEARCH PROGRAMMES

MSc by Research/PhD Astronomy and Astrophysics
FT / PT

PhD Biological Physics
FT / PT

PhD Condensed Matter Physics
FT / PT

PhD Nanoscience
FT / PT

PhD Next Generation Nuclear CDT
FT / PT

MSc by Research/PhD Nonlinear Physics
FT / PT

MSc by Research/PhD Nuclear Physics
FT / PT

MSc by Research/PhD Particle Physics
FT / PT

PhD Photon Physics
FT / PT

PhD Graphene NOWNANO CDT
FT / PT

MSc by Research/PhD Soft Matter and Liquid Crystals
FT / PT

MSc by Research/PhD Theoretical Physics
FT / PT

*For details of this course email info@ntec.ac.uk or visit www.ntec.ac.uk

CONTACTS

Research programme enquiries
+44 (0)161 306 3673
pg-physics@manchester.ac.uk
www.manchester.ac.uk/physics

PLANNING AND ENVIRONMENTAL MANAGEMENT

WHY MANCHESTER?

- We are one of the longest established and largest professionally recognised planning schools in the UK, renowned internationally for our teaching and the quality of our research
- We place a strong interdisciplinary emphasis on our work, with all of our staff working across a number of teaching and research areas
- Manchester has the largest concentration of professional practices outside of London, making our School an excellent place to undertake your graduate studies in planning and environmental management
- We have an excellent graduate employment record and strong professional links with planners, urban development professionals and environmental managers, particularly in Manchester

RAE SCORES

4* 20% 3* 40% 2* 30% 1* 10%

We have an active research culture with a strong commitment to working at the cutting edge of current practice. In the most recent Research Assessment Exercise (RAE 2008), 60% of our research activity was ranked as 'world leading' or 'internationally excellent', and in the past five years we have attracted in excess of £2.5 million in research and training contracts.

Our PhD students benefit from being integrated into our vibrant, multidisciplinary research community. The RAE 2008 praised our PhD Planning programme for "outstanding quality evident in the research culture and student support".

Our master's courses are accredited by the Royal Town Planning Institute (RTPI) and by the Royal Institution of Chartered Surveyors (RICS). As a graduate of the MSc Planning degree you can proceed to become a full member of the RTPI and chartered planners, while our other master's courses are accredited by the RTPI and the RICS as specialist master's degrees.

MASTER'S COURSES

MSc Environmental Impact Assessment and Management

FT / PT

MSc Global Urban Development and Planning

FT / PT

MSc Planning

FT / PT

MSc Real Estate Asset Management

FT / PT

MSc Real Estate Development

FT / PT

MSc Urban Design and International Planning

FT/PT

MSc Urban Regeneration and Development

FT / PT

RESEARCH PROGRAMMES

PhD Planning and Environmental Management

FT / PT

FUNDING

Studentship awards are available from the ESRC and other research funding councils, and from both the University and SEED. For more information about funding, see: www.seed.manchester.ac.uk/fees

CONTACTS

Master's enquiries

+44 (0)161 275 0969

seed.admissions@manchester.ac.uk

www.manchester.ac.uk/planning

Research programme enquiries

+44 (0)161 275 0969

seed.admissions@manchester.ac.uk

www.manchester.ac.uk/planning



PROFILE

Professor Sir Kostya Novoselov

Physics and Astronomy
research associate

A Nobel Prize winner

Kostya works in our School of Physics and Astronomy. He received the Nobel Prize for Physics in 2010 and a knighthood in 2012 in recognition of his work with Manchester colleague Professor Andre Geim on the revolutionary super-material graphene. When not dealing with international fame, he is devoted to his research, works with his postgraduate students, and watches *The Big Bang Theory*.

"The work that got us the Nobel Prize, we started in Manchester. It was originally a side experiment from our mainstream work – we always have a few side experiments going, small things, sometimes crazy.

"I think this is within the culture of the British system. You are allowed to do those crazy experiments, which allows you to be creative.

"The main reason you should come here is the quality. You just have to look at my colleagues, or the league tables. The fact that it's a huge place is an additional benefit.

"You always have experts in any field you need. If you want to study a masters or PhD, you have a great choice of people to learn with here. Postgraduate courses are also often run using the same equipment as we use for our scientific experiments, which is world class."

"Manchester is a big department with lots of people you can talk with who all do different things. That's usually how a physicist works best – you think, discuss, and discussions bring fruit."

POLITICS

WHY MANCHESTER?

- We are one of the largest and strongest politics departments in the UK, with a long and distinguished history as a centre of research, research training and education at postgraduate level
- 80% of our research activity is considered world-leading, internationally-excellent or internationally-recognised, according to the most recent Research Assessment Exercise (RAE 2008).
- We have distinctive research strength in analytical political theory, comparative public policy, electoral politics, critical international political economy and poststructuralist international relations
- Some of our recent graduates have pursued careers in a range of different areas, from teaching, journalism and law, to accountancy, retail and trainee management

RAE SCORES

4* 20% 3* 30% 2* 30% 1* 20%

What is politics and what does it mean to be 'political'? Why do violence, inequality, and poverty persist in the world? Why do we organise ourselves as we do at the local, national, and global level? What does it mean to be a political subject? And significantly, how do we change the world we live in? These are but a few of the questions critically engaged in Politics at Manchester; questions that are directly relevant to all of our lives and raise fundamental questions about what it means to be human and living in complex times.

So whether it is a fall in global stock markets inducing panic in London's financial centre, humanitarian intervention to prevent famine in Sub-Saharan Africa, bitter ethnic conflicts in Eastern Europe, or national concerns about the extent of European integration, Politics at Manchester is about making imperative attempts to understand the implications of such events, and how and why they happen. Studying politics at Manchester is to grapple with thinking about how we think, see, and live in the world with a diverse

and dynamic group of scholars actively engaged in researching the vital issues of our day.

MASTER'S COURSES

MA/PGDip Human Rights
FT / PT

MA/PGDip International Politics
FT / PT

MA/PGDip Political Economy
FT / PT

MA/PGDip Political Science
FT / PT

MA/PGDip Politics
FT / PT

RESEARCH PROGRAMMES

PhD Politics
FT / PT

FUNDING

For more information about the awards available to MA and PhD students, see: www.socialsciences.manchester.ac.uk/study-with-us/fees-and-funding

CONTACTS

Master's enquiries
+44 (0)161 275 1296
pg-soss@manchester.ac.uk
www.socialsciences.manchester.ac.uk/subjects/politics

Research programme enquiries
+44 (0)161 275 4743
pg-soss@manchester.ac.uk
www.socialsciences.manchester.ac.uk/subjects/politics

PSYCHOLOGICAL SCIENCES

WHY MANCHESTER?

- We are a vibrant and flourishing centre of research, playing a major role in the Neuroscience Research Institute and a member of the University-wide Institute of Health Sciences
- Our research influences, underpins and delivers improved services in international health care and education
- Our clinical psychologists are world leaders in the development and evaluation of psychological and psycho-social interventions in the treatment of psychotic disorders, notably schizophrenia and emotional disorders
- Our Graduate School is a hub for our postgraduate community involved in a diverse range of study, from short-term professionally linked programmes through to research training in multidisciplinary areas

RAE SCORES

4* 10% 3* 35% 2* 45% 1* 10%

We collaborate with numerous external partners, including NHS trusts across the region, hearing aid companies and educationalists.

We offer PhDs across our areas of expertise, a Clinical Doctorate in Psychology (ClinPsyD), and professionally directed training in Audiology. Our MRes in Psychology prepares you for research careers or PhD study. Our MSc in Clinical and Health Psychology combines the academic grounding for both disciplines, while the MSc in Neuroimaging for Clinical and Cognitive Neurosciences provides technical and computational training informed by psychological science; both courses are unique in the UK.

See also *Audiology* page 61.

MASTER'S COURSES

MSc Clinical and Health Psychology
FT

MSc Neuroimaging for Clinical and Cognitive Neurosciences
FT

MRes Psychology
FT / PT

RESEARCH PROGRAMMES

MPhil/PhD Clinical Psychology
FT / PT

MPhil/PhD Psychology
FT / PT

ClinPsyD Clinical Psychology
FT

FUNDING

Every year the School is awarded approximately 12 studentships by the research councils and the University that pay the home/EU fees and a stipend of £13,726 (subject to change). These are allocated to the best students that apply for the PhD.

CONTACTS

Master's enquiries

+44 (0)161 275 2585

pg.psychology@manchester.ac.uk

www.psych-sci.manchester.ac.uk/postgraduate/taught

Research programme enquiries

+44 (0)161 275 2575

pg.psychology@manchester.ac.uk

www.psych-sci.manchester.ac.uk/postgraduate/research

PUBLIC HEALTH

WHY MANCHESTER?

- Our Graduate School is a hub for our postgraduate community where we offer substantial postgraduate training opportunities in public health ranging from professionally linked master's, through to research training for academic or healthcare careers
- Our Master of Public Health and its sister courses in Dentistry and Pharmacy are modular and entirely online, ideal for students wishing to further their knowledge of public health as well as those interested in research and academic careers
- The Occupational Medicine and Hygiene programmes are also delivered predominantly online
- We have a dedicated team of e-learning technologists to help support you throughout your studies on a one-to-one basis

Contemporary public health practice requires practitioners to be adaptable and flexible, with a broad experience of a range of subject areas. Studying our public health focussed programmes will equip you with the skills and knowledge to help improve people's health and reduce inequalities in health.

MASTER'S COURSES

MSc/PGDip/PGCert Community Pharmacy Public Health Services*
PT

MDPH/MRes/PGDip/PgCert Dental Public Health **
FT / PT

MSc/PgDip/PGCert Occupational Hygiene (Blended Learning)
PT

MSc/Advanced PGDip/PGCert Occupational Medicine (Blended Learning)
PT

MRes Primary Care
FT / PT / DL

MRes/MPH/PGDip/PGCert Public Health
FT / PT / DL

RESEARCH

MPhil/PhD Dental Public Health (Community Dentistry)
FT / PT

CONTACTS

Master's enquiries

+44 (0)161 275 5688
pgt.medicine@manchester.ac.uk
www.mhs.manchester.ac.uk/postgraduate/programmes/taughtmasters

Research programme enquiries

+44 (0)161 275 5688
pg.medicine@manchester.ac.uk
www.mhs.manchester.ac.uk/postgraduate/programmes/research/medicine

**Please see Pharmacy for contact details page 110*

***Please see Dentistry for contact details page 68*

RELIGIONS AND THEOLOGY

WHY MANCHESTER?

- We are a vibrant and friendly department dedicated to one of the most challenging, exciting, thought-provoking and important subjects you could choose to study
- You will be taught by scholars of international standing who are linguists, anthropologists, theologians of several religions, philosophers, historians and critical theorists
- You will have access to one of the UK's major university libraries, with an extensive collection of books and archives in the areas of religion and theology
- Our graduates have gone on to leading academic positions around the world and have taken up roles as a sub-editor for a media company, researcher for a non-governmental organisation, health service administrator, communication manager, company area manager and artistic director

RAE SCORES

4* 25% 3* 40% 2* 30% 1* 5%

Our MA courses prepare you either for work in which religious and cultural awareness is important, or for further study. About half of our students come with a religion or theology degree. The rest come usually with a humanities degree and a desire to switch focus into the study of religion or a related field. As an MA student, you will have research access to the John Rylands Library, one of the world's leading archive centres, housing everything from the oldest New Testament fragment to John Wesley's letters.

We have key research strengths of international quality in biblical studies, jewish studies, south asian studies, islamic studies, Buddhism, and theology (including political theology). You will also be provided with training in a wide range of research approaches, skills and resources designed to help you build a wide skill set for future research and career development. These include a number of workshops, careers events, networking days and other opportunities organised by

artsmethods@manchester through the Graduate School.

MASTER'S COURSES

MA Religions and Theology

FT / PT

MA Religions and Theology (Biblical Studies)

FT / PT

RESEARCH PROGRAMMES

PhD Religions and Theology

FT / PT

FUNDING

Subject-specific postgraduate funding is periodically offered. For MA study: Chadwick Prize; Bishop Lee Prize (New Testament Greek). For PhD study: Wellington Scholarship (Biblical Studies); Hedley Lucas and Mark Gibbs Scholarships (Theology); Lincoln Theological Institute International Scholarship. See our website for details of any on offer in your application year.

CONTACTS

Master's enquiries

+44 (0)161 275 34144

MASALC@manchester.ac.uk

www.manchester.ac.uk/alc/apply/postgraduatetaught

Research programme enquiries

+44 (0)161 275 3559

PhDSALC@manchester.ac.uk

www.manchester.ac.uk/alc/apply/postgraduateresearch

SOCIAL ANTHROPOLOGY

WHY MANCHESTER?

- We are internationally renowned and have noted expertise in the anthropology of Latin America, Britain, development, materiality, the State and political economy
- The Granada Centre for Visual Anthropology is highly regarded, providing training in visual anthropology, ethnographic documentary and sensory media
- We were rated first in England and second in the UK in *The Guardian* University Guide 2014 league table for anthropology
- If you have an interest in, but no background of, social anthropology, our MA in Social Anthropology is designed as a conversion degree, with many students going on to join the doctoral programme.

RAE SCORES

4* 20% 3* 30% 2* 40% 1* 10%

Social anthropology involves the study of social and cultural diversity across the world. Since the School was founded in 1949, our interests have grown both thematically and geographically, and today cover most of the globe. We have also developed a strong international profile for innovative research, particularly in relation to late colonial Africa.

We are particularly known for the study of: politics and economics; borders, space and place; new technologies; visual culture and representation beyond texts. We have an unequalled reputation for ethnographic film-making, photography and sound. We also have many interdisciplinary links, notably with colleagues in development studies, history, archaeology and drama.

MASTER'S COURSES

MA Anthropological Research (MAAR)

FT / PT

MA Social Anthropology (MASA)

FT / PT

PGDip Social Anthropology

As above, without the requirement to submit a dissertation. Students may upgrade to the MA, subject to satisfactory progress.

MA Visual Anthropology

FT / PT

RESEARCH PROGRAMMES

PhD Anthropology, Media and Performance

(in collaboration with Drama)

FT / PT

PhD Social Anthropology

FT / PT

MPhil/PhD Visual Anthropology

FT / PT

FUNDING

For information about fees and funding, see: www.socialsciences.manchester.ac.uk/study-with-us/fees-and-funding

CONTACTS

Master's enquiries

+44 (0)161 275 1296

pg-soss@manchester.ac.uk

www.socialsciences.manchester.ac.uk/subjects/social-anthropology

Research programme enquiries

+44 (0)161 275 3917

+ 44 (0)161 275 4471

Vicky.Barnes@manchester.ac.uk

www.socialsciences.manchester.ac.uk/subjects/social-anthropology

SOCIAL STATISTICS

WHY MANCHESTER?

- A high-profile discipline area, developing and applying statistical and quantitative research in the social sciences
- Our MSc in Social Research Methods and Statistics will provide you with a firm grounding in advanced quantitative methods, taught within an applied social science framework
- Our graduate programmes are recognised by ESRC and the North West Doctoral Training Centre and we receive a large number of Advanced Quantitative Methods (AQM) and CASE awards each year
- We were ranked joint first in the last Research Assessment Exercise, with the highest proportion of research judged to be 'world leading' of any UK higher education institution (RAE 2008)

RAE SCORES

4* 40% 3* 20% 2* 25% 1* 15%

Research activities are both methodological and substantive and you will focus on a wide range of subject areas, including social inequalities, population dynamics, social network analysis and survey methodology. We work across disciplines, developing and applying statistical and advanced quantitative methods in a social science framework.

We have a strong connection with the newly formed Cathie Marsh Institute for Social Research (CMIST), reflecting our commitment to cross-disciplinary integrated research. We contribute to the teaching of the short course programme of CMIST, providing training in an applied context to support students, academics and government researchers.

As a graduate of our undergraduate courses through the prestigious Q-step programme (funded by the Nuffield Foundation, ESRC and HEFCE) and our postgraduate taught courses, you will be in a good position to obtain employment in central and local government, the academic sector and commercial

research. Our PhD students join a thriving research programme and receive high-quality training and supervision tailored to their particular needs.

MASTER'S COURSES

MSc/PGDip Social Research Methods and Statistics
FT / PT

RESEARCH PROGRAMMES

PhD Applied Social Research
FT / PT

MPhil/PhD Social Statistics
FT / PT

FUNDING

Master's funding:

We award between six and seven bursaries at 75% funding of home/EU fees and the Stanley Jevons Loyalty Bursary for Manchester graduates with a First Class degree.

PhD funding:

Studentships include North West Doctoral Training Centre, Social Statistics PhD studentship, CASE studentships and the SoSS Overseas Research Scholar awards.

CONTACTS

Master's enquiries

+44 (0)161 275 1296
pg-soss@manchester.ac.uk
www.socialsciences.manchester.ac.uk/subjects/social-statistics

Research programme enquiries

+44 (0)161 275 4743
pg-soss@manchester.ac.uk
www.socialsciences.manchester.ac.uk/subjects/social-statistics

SOCIAL WORK

WHY MANCHESTER?

- We have an established history of providing excellent social work education, training and innovative research
- Our MA Social Work is approved by the Health and Care Professions Council (HCPC) and endorsed by The College of Social Work: graduates are eligible to apply for registration as a social worker
- We are committed to conducting high-quality applied research that provides evidence to enhance social care services and the experiences of those using them
- Our Graduate School is a hub for our postgraduate community involved in a diverse range of study, from short-term professionally linked programmes through to research training in multidisciplinary areas

RAE SCORES

4* 15% 3* 30% 2* 50% 1* 5%

We aim to produce professionally competent, reflective and analytical social work practitioners who are able to practice in a variety of settings, with a range of service users. Our MA meets the requirements of the social work Professional Capabilities Framework for Social Work Practice in England, so on completion you will be eligible to apply to register as a qualified social worker with the HCPC.

Our PhD Social Work programme is an integral part of our North West ESRC Doctoral Training Centre, assuring high quality research teaching, supervision and support. As an MPhil or PhD student, you will play a key role in our research output and we encourage you to publish your research, present at conferences and engage with the wider community. We have built our research culture on the integration of professional knowledge and expertise with strong research education and support.

MASTER'S COURSES

MA Social Work

FT

RESEARCH PROGRAMMES

MPhil/ PhD Social Work

FT / PT

FUNDING

The government provides a limited number of student bursaries for the MA Social Work course. This bursary provides a contribution towards tuition fees, nominal living expenses and transport costs for placements. See website for more information:
www.mhs.manchester.ac.uk/postgraduate/programmes/taughtmasters/socialwork

Check online for specific funding arrangements:
www.nursing.manchester.ac.uk/postgraduate/research

CONTACTS

Master's enquiries

+44 (0)161 306 7746

graduate.socialwork@manchester.ac.uk

www.nursing.manchester.ac.uk/postgraduate/taught

Research programme enquiries

+44 (0)161 306 0270

graduate.nursing@manchester.ac.uk

www.nursing.manchester.ac.uk/postgraduate/research

SOCIOLOGY

WHY MANCHESTER?

- In the latest RAE exercise 85% of our research was considered of international standard and 60% was internationally excellent or world-leading
- You will enjoy access to a world-class library and we encourage you to participate in the department's research seminars, reading groups and conferences
- We provide expert supervision on the range of subjects within contemporary sociology and on multi- and inter-disciplinary projects involving collaborations with colleagues across other disciplines
- Our graduates have gone on to careers in social research for public, private and third sector organisations, public policy work for local, national and even international governmental organisations, education and writing for media organisations

RAE SCORES

4* 40% 3* 20% 2* 25% 1* 15%

We are one of the UK's largest and most prestigious centres for sociology with over 35 academic staff and 35 PhD students. We were judged in the most recent RAE to be the best in the nation, with a higher proportion of our research activity rated 'world leading' than that of any other university.

We specialise in theoretically driven empirical research and in experimental and mixed methods research. Our broad expertise includes all areas of contemporary sociology, but we are particularly strong in the following areas: socio-cultural change; everyday life, gender and sexuality; cultural practices, consumption and sustainability; social movements and social networks; stratification, inequality, race and ethnicity; technology and material culture.

We place a high value on teaching and research that engages with real world issues. Our most important commitment is ensuring that you will receive a top-class education to develop your sociological imagination and research skills to equip you for your future career.

MASTER'S COURSES

MA/MSc/PGDip Sociology
FT / PT

RESEARCH PROGRAMMES

PhD Applied Social Research
FT / PT

PhD Sociology
FT / PT

FUNDING

There is some funding available from the Economic and Social Research Council, through the North West Doctoral Training Centre (NWDTC).

We also have a number of internal scholarships each year, including the President's Award, which can include help with fees for overseas students. Registered students are eligible for support with the costs of fieldwork and conference trips.

CONTACTS

Master's enquiries

+44 (0)161 275 1296

pg-soss@manchester.ac.uk

www.socialsciences.manchester.ac.uk/subjects/sociology

Research programme enquiries

+44 (0)161 275 4743

Vicky.Barnes@manchester.ac.uk

www.socialsciences.manchester.ac.uk/subjects/sociology

TRANSLATING, INTERPRETING AND INTERCULTURAL STUDIES

WHY MANCHESTER?

- Leading researchers and trainers MA courses combining practical training with critical reflection on the challenges of translation, interpreting and cross-cultural communication
- We pioneered a corpus-based approach to the study of translation, using the unique resource of the Translational English Corpus, and we continue to shape and influence the field of translation studies
- You will use industry-standard translation software and train in the same kind of interpreting facilities used in international organisations
- As a PhD student, you will be supported by a dynamic research culture and excellent opportunities for research training

Our MA in Conference Interpreting will prepare you for a career as a conference interpreter. You will be trained by academics and experienced practitioners and benefit from our collaborations with international organisations through internships and teaching support. The MA in Translation and Interpreting Studies is accredited by the prestigious European Masters in Translation Network. Our pathways provide industry-relevant translator/interpreter training and excellent preparation for doctoral study.

Our research spans diverse areas in translation and interpreting studies. We employ a variety of methods, from corpus-linguistic analysis to ethnographic methods.

MASTER'S COURSES

MA/PGDip Conference Interpreting
FT / PT

MA/PGDip Intercultural Communication
FT / PT

MA/PGDip Translation and Interpreting Studies
FT / PT

RESEARCH PROGRAMMES

PhD Interpreting Studies
FT

MPhil/PhD Translation and Intercultural Studies
FT

FUNDING

MA funding: www.manchester.ac.uk/alc/fees/postgraduate-taught-funding

PhD funding: www.manchester.ac.uk/alc/fees/postgraduate-research-funding

CONTACTS

Master's enquiries
+44 (0)161 275 3144
MASALC@manchester.ac.uk
www.manchester.ac.uk/alc/apply/postgraduatetaught

Research programme enquiries
+44 (0)161 275 3559
phdsalc@manchester.ac.uk
www.manchester.ac.uk/alc/apply/postgraduateresearch

RAE SCORES

Asian Studies

4* 10% 3* 25% 2* 45% 1* 20%

French

4* 15% 3* 35% 2* 35% 1* 15%

German, Dutch and Scandinavian Languages

4* 20% 3* 35% 2* 30% 1* 15%

Iberian and Latin American Languages

4* 30% 3* 45% 2* 20% 1* 5%

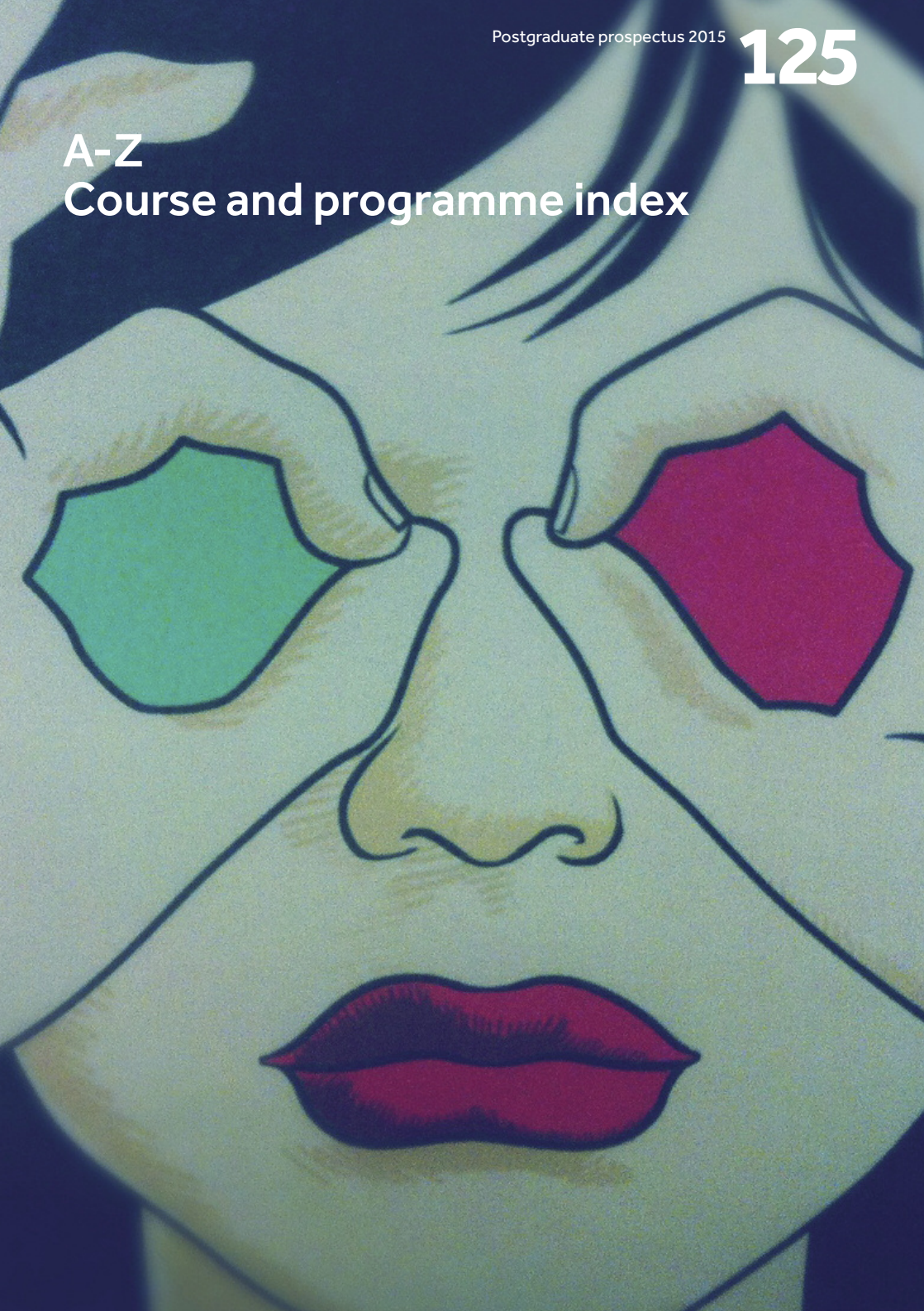
Middle Eastern and African Studies

4* 15% 3* 45% 2* 20% 1* 15%

You will study and thrive in a lively and supportive environment with a well-established programme of extracurricular events. Professional development workshops and research seminars are given by invited speakers from industry and academia.

A-Z

Course and programme index



SUBJECT	PAGE	SUBJECT	PAGE
A		Applied Theatre Professional Doctorate	71
Accounting and Finance MPhil / MSc / PhD	95	Arab World Studies PhD	106
Actuarial Science MSc/PhD	98	Archaeology MA / PhD / MPhil	57
Adaptive Organismal Biology MPhil / PhD	92	Architecture PhD / MPhil / MArch	58
Advanced Audiology Studies MSc/PGDip	61	Architecture and Urbanism MA	58
Advanced Chemical Engineering MSc	62	Art Gallery and Museum Studies MA	107
Advanced Computer Science MRes / MSc	66	Art History MA	59
Advanced Computer Science and IT Management MSc	66	Art History and Visual Studies PhD	59
Advanced Control and Systems Engineering MSc	77	Arts and Cultural Management Professional Doctorate / MEnt	60
Advanced Electrical Power Systems Engineering MSc	77	Arts Management and Cultural Policy PhD	60
Advanced Engineering Materials MSc	97	Arts Management, Policy and Practice MA	60
Advanced Manufacturing Technology and Systems Management MSc	100	Astronomy and Astrophysics MSc by Research / PhD	112
Advanced Practice in Forensic Mental Health MSc	103	Atmospheric Sciences MPhil / MSc by Research / PhD	72
Advanced Process Interventions for Mental Health APIMH	103,109	Audiology MSc / MPhil / PhD / Four-year PhD	61
Advanced Process Integration and Design MSc	62	B	
Aerospace Engineering MPhil / MSc / MSc by Research / PhD	56	Basic Dental Science (Cancer Studies) MPhil / PhD	70
American Studies MA	78	Basic Dental Science (Molecular Genetics) MPhil / PhD	70
Animal Biology MPhil / PhD	92	Basic Dental Science (Stem Cell Biology) MPhil / PhD	70
Anthropological Research MA	120	Basin Studies and Petroleum Geoscience MPhil / MSc by Research / PhD	72
Anthropology, Media and Performance PhD	71,120	Bioarchaeology MPhil / PhD	92
Applications in Environmental Science MSc	92	Biocatalysis MPhil / PhD	62
Applied Mathematics MSc / PhD	98	Biochemistry MSc / MPhil / PhD	92
Applied Mathematics with Industrial Modelling MSc	98	Bioethics and Medical Jurisprudence PhD	90
Applied Mental Health AMHP / PGCert / MSc	101,103	Bioinformatics and Systems Biology MSc	92
Applied Theatre (pathway of Theatre and Performance MA)	71	Bioinformatics MPhil / PhD	92
Applied Social Research PhD	121,123	Biological Chemistry MPhil / PhD	63
		Biological Physics PhD	112

SUBJECT	PAGE	SUBJECT	PAGE
Biological Sciences MRes	92	Clinical Biochemistry MSc	101
Biomaterials MSc	97	Clinical Psychology ClinPsyD / MPhil / PhD	117
Biomaterials Science and Dental Technology MPhil / PhD	70	Clinical Research MClin Res / PGDip Clin Res / PGCert Clin Res	101,109
Biomedical Materials MPhil / MSc by Research / PhD	97	Clinical Rheumatology MSc	101
Biomolecular Science MPhil / PhD	92	Colloids, Crystals, Interfaces and Materials MPhil / PhD	62
Biotechnology MPhil / MSc / PhD	62,92	Communication Engineering MSc	77
Biotechnology and Enterprise MSc / PhD	92	Community Pharmacy Public Health Services MSc / PGDip / PGCert	110,118
Business Administration MBA / DBA	96	Competition, Regulation and Development MSc	88
Business Analysis and Strategic Management MSc	95	Composite Materials MSc by Research / PhD	97
Business Analytics: Operational Research and Risk Analysis MSc	95	Composition MusM / PhD	108
Business and Management MPhil / PhD	95	Computer Science MPhil / PhD / PhD (CDT) / MEnt	67
C		Condensed Matter Physics PhD	112
Cancer Research and Molecular Biomedicine MSc	92	Conference Interpreting MA / PGDip	73,106, 124
Cardiovascular Health and Disease MRes	107	Contemporary Literature and Culture MA	78
Cell Biology MSc / MPhil / PhD	92	Corporate Communications and Reputation Management MSc	95
Cell Matrix Research MPhil / PhD	92	Corporate Governance LLM	90
Ceramics and Glasses MPhil / MSc by Research / PhD	97	Corrosion and Protection MSc by Research / MPhil / PhD	97
Channels and Transporters MPhil / PhD	92	Corrosion Control Engineering MSc	97
Chemical Engineering and Analytical Science MPhil / EngD / Integrated PhD / PhD	62	Counselling MA	75
Chemical Engineering MPhil / PhD	62	Counselling Psychology Professional Doctorate	75
Chemistry MSc / MSc by Research / EntD / MEnt / MPhil / PhD / PGDip / PGCert	63	Creative Writing MA / PhD	68,78
Chinese Studies MPhil / PhD	73	Criminology MA / MPhil / MRes / PGDip / PhD	90
Civil Engineering MPhil / MSc by Research / PhD	64	D	
Classics and Ancient History MA / PhD / MPhil	65	Deaf Education MSc / PGDip	61
Clinical and Health Psychology MSc	103,117	Dementia Care pathway APIMH MSc / PGDip	103,109
Clinical and Health Services Pharmacy PGDip	110		

SUBJECT	PAGE	SUBJECT	PAGE
Dental Implantology MSc / PGDip / PGCert	69	Endodontics MSc / MSc (Clin) / PGDip	69
Dental Public Health MDPH / MRes / MSc / PGDip / PGCert	69,118	Endodontology MPhil / PhD	70
Dental Public Health (Community Dentistry) MPhil / PhD	70	English and American Studies MA / PhD / MPhil	78
Dental Science Clinical PhD (Clin)	70	English Language MA / PhD	79
Development Economics and Policy MSc	88	English Studies MA	78
Development Finance MSc	88	Enterprise MEnt	95
Development Policy and Management PhD	88	Environment and Sustainable Technology MSc / MPhil / PhD	62
Developmental Biology MSc / MPhil / PhD	92	Environmental Biology MPhil / PhD	92
Digital Signal Processing MSc	77	Environmental Engineering MPhil / PhD	82
Digital Technologies, Communication and Education MA	75	Environmental Geochemistry and Geomicrobiology MPhil / MSc by Research / PhD	72
Drama PhD	71	Environmental Geography MSc	85
<hr/>		Environmental Impact Assessment and Management MSc	113
E		Environmental Monitoring, Modelling and Reconstruction MSc	85
Earth, Atmospheric and Environmental Sciences MPhil / MSc by Research / PhD	72	Environmental Sciences, Policy and Management MESPOM	72
East Asian Studies MPhil / PhD	73	Evolutionary Biology MPhil / PhD	92
Econometrics MSc	74	<hr/>	
Economic and Social History MPhil / PhD	86	F	
Economics (Economics of Health) MSc	74	Finance MSc	95
Economics (Environmental Economics) MSc	74	Finance and Business Economics MSc	95
Economics and Econometrics MSc	74	Financial Economics MSc	74
Economics MA / MSc / MRes / PhD	74	Financial Mathematics PhD	99
Education (International) MA	75	Fixed and Removable Prosthodontics MSc / MPhil / MSc (Clin) / PhD	69
Education EdD / PhD	75	Forensic Mental Health MSc	103
Educational and Child Psychology DEdChPsychol	75	Forensic Psychology and Mental Health FT MSc (subject to approval)	101
Educational Leadership MA	75	French Studies MPhil / PhD	84
Electrical and Electronic Engineering MSc by Research / MEnt / EntD / EngD / MPhil / PhD	77		
Electrical Power Systems Engineering MSc	77		
Electroacoustic Music Composition MusM / PhD	108		

SUBJECT	PAGE	SUBJECT	PAGE
G		I	
Gender, Sexuality and Culture MA	78	ICTs for Development MSc	88
Gene Expression MPhil / PhD	92	Immunology MPhil / PhD	93
Genetic Counselling MSc	101	Innovation Management and Entrepreneurship MSc	95
Genetic Medicine MRes	101	Inorganic Chemistry MPhil / PhD	63
Genetics MPhil / PhD	92	Instrumentation MPhil / PhD	62
Geographical Information Science MSc	85	Integrative Biology MRes	92
German Studies MPhil / PhD	84	Integrative Neurobiology and Behaviour MPhil / PhD	92
Global Health PGCert	87	Intellectual Property Law LLM	90
Global Urban Development and Planning MSc	113	Intercultural Communication MA / PGDip	73,79,106
Graphene NOWNANO CDT PhD	112	International Business and Commercial Law LLM	90
H		International Business and Management MSc	95
Health and Social Care MRes HSC / PGDip HSC / PGCert HSC	109	International Development MSc	88
Healthcare Ethics and Law MSc (Intercalated) MSc / MA / LLM	90	International Development: Development Management MA	88
Healthcare Ethics PGCert	90	International Development: Environment, Climate Change and Development MA	88
Healthcare Law PGCert	90	International Development: Globalisation, Trade and Industry MSc	88
History MA / MPhil / PhD	86	International Development: Politics, Governance and Developing Policy MA	88
History of Science, Technology and Medicine MSc / MPhil / PhD	92	International Development: Poverty, Conflict and Reconstruction MA	88
Human Geography PhD	85	International Development: Poverty, Inequality and Development MSc	88
Human Resource Development (International Development) MSc	88	International Development: Public Policy and Management MSc	88
Human Resource Management (International Development) MSc	88	International Disaster Management MA	87
Human Resource Management and Development (International Development) MSc	88	International Fashion Retailing MSc	97
Human Resource Management and Comparative Industrial Relations (International) MSc	95	International Fashion Retailing (Business Improvement) MSc	97
Human Resource Management and Industrial Relations MSc	95	International Fashion Retailing (Multichannel Marketing) MSc	97
Human Rights MA / PGDip	116		
Humanitarianism and Conflict Response MA / PhD	87		

SUBJECT	PAGE	SUBJECT	PAGE
International Financial Law LLM	90	Management of Projects: Engineering Project Management MSc	64
International Human Resource Management and Comparative Industrial Relations MSc	95	Managerial Psychology MSc	95
International Politics MA / PGDip	106	Manchester Global MBA	95
International Trade Transactions LLM	90	Marketing MSc	95
Interpreting Studies PhD	73,124	Materials Chemistry MPhil / PhD	63
Investigative Ophthalmology and Vision Science MSc	101	Materials PhD	97
Isotope Geochemistry and Cosmochemistry MPhil / MSc by Research / PhD	72	Maternal and Fetal Health MRes	101
Italian Studies MPhil / PhD	84	Mathematical Finance MSc	98
		Mathematical Logic PhD	99
		Mathematical Sciences MPhil	99
		Mechanical Engineering Design MSc	100
		Mechanical Engineering MPhil / MSc by Research / PhD	100
		Medical Education MSc / PGDip / PGCert	101
		Medical Imaging MSc / PGDip	101
		Medical Microbiology MSc / PGDip	101
		Medical Mycology MSc / PGDip / PGCert	101
		Medical Sciences MRes	101
		Medical Virology MSc / PGDip	101
		Medicine MD / MPhil / PhD	101
		Medieval Studies MA	78,86
		Membrane Trafficking MPhil / PhD	92
		Metallic Materials MPhil / MSc by Research / PhD	97
		Microbiology MPhil / PhD	92
		Middle Eastern Studies MPhil / PhD	106
		Midwifery MPhil / PhD	109
		Modelling and Simulation in Pharmacokinetics and Pharmacodynamics MSc	110
		Molecular and Cellular Neuroscience MPhil / PhD	92
		Molecular Biology MPhil / PhD	92
		Molecular Cancer Studies MPhil / PhD	92
		Multi-Scale Modelling MPhil / PhD	62
J			
Japanese Studies MPhil / PhD	73		
L			
Languages and Cultures (Research Route) MA	73,106		
Latin American Cultural Studies MPhil / PhD	84		
Law LLM / MPhil / PhD	90		
Linguistics MA / MPhil / PhD	79		
Literature and Culture 1200-1700 MA	78		
M			
Management and Implementation of Development Projects MSc	88		
Management and Information Systems: Change and Development MSc	88		
Management MRes / MSc	95		
Management of Projects MPhil / MSc / MSc by Research / PhD	64		
Management of Projects: Commercial Project Management MSc	64		
Management of Projects: Construction Project Management MSc	64		

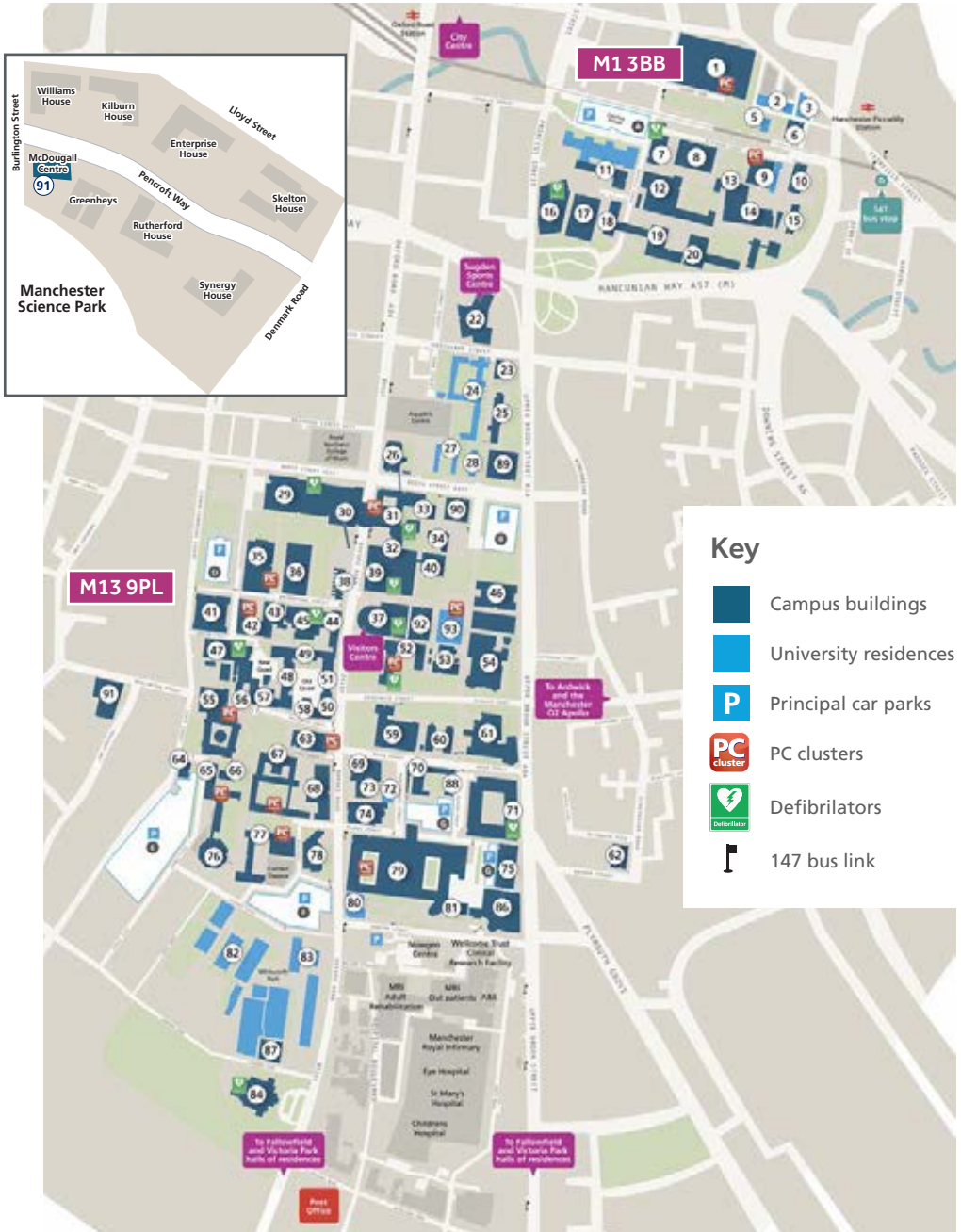
SUBJECT	PAGE	SUBJECT	PAGE
Museology PhD	107	Oral Radiology MPhil / PhD	70
Museum Practice (Professional Doctorate)	107	Organelle Function MPhil / PhD	92
Music PhD	108	Organic Chemistry MPhil / PhD	63
Musicology MusM / PhD	108	Organisational Change and Development MSc	88
		Organisational Psychology MSc	95
		Orthodontics MPhil / MSc (Clin) / PhD	69,70
N			
Nanoscience PhD	112		
Nanostructured Materials MPhil / MSc by Research / PhD	97	P	
Neuroimaging for Clinical and Cognitive Neuroscience MSc	117	Palaeontology MPhil / MSc by Research / PhD	72
Neuroscience MSc / MPhil / PhD	92	Paper Science MPhil / MSc by Research / PhD	97
Next Generation Nuclear CDT PhD	112	Particle Physics MSc by Research / PhD	112
Nonlinear Physics MSc by Research / PhD	112	Peace-Building MA	87
Nuclear Engineering MPhil / PhD	100	Periodontology MSc (Clin)	69
Nuclear Physics MSc by Research / PhD	112	Petroleum Geoscience for Exploration MSc	72
Nuclear Science and Technology MSc / PGDip / PGCert	112	Petroleum Geoscience for Reservoir Development and Production MSc	72
Numerical Analysis PhD	99	PGCE Primary	75
Nursing MPhil / PhD	109	PGCE Primary (Modern Language)	75
		PGCE Primary School Direct 5-11	75
		PGCE Secondary Business Education	75
O		PGCE Secondary Chemistry	75
Occupational Hygiene MSc / PGDip / PGCert	101,118	PGCE Secondary Design Technology	75
Occupational Medicine MSc / Advanced PGDip / PGCert	101,118	PGCE Secondary English	75
Oncology MRes	101	PGCE Secondary German	75
Operations, Project and Supply Chain Management MSc	95	PGCE Secondary Mathematics	75
Operative Dentistry MPhil / PhD	70	PGCE Secondary Modern Languages (French/German/Spanish)	75
Ophthalmology MPhil / PhD	92	PGCE Secondary Physics	75
Optometry MPhil / PhD	92	PGCE Secondary Physics with Maths	75
Oral and Maxillofacial Surgery MSc / PGDip / MSc (Clin) / MPhil / PhD	69,70	PGCE Secondary School Direct (English)	75
		PGCE Secondary School Direct (Mathematics)	75
		PGCE Secondary School Direct Design and Technology (11-16)	75

SUBJECT	PAGE	SUBJECT	PAGE
PGCE Secondary School Direct Science: Biology (11-16 or 11-18)	75	Post-1900 Literatures, Theories and Cultures MA	78
PGCE Secondary School Direct Science: Chemistry (11-16 or 11-18)	75	Postcolonial Literatures and Cultures MA	78
PGCE Secondary School Direct Science: Physics (11-16 or 11-18)	75	Postgraduate Certificate in Education Secondary School Direct (French / German / Physics with Maths / Spanish)	75
PGCE Secondary School Direct: Business Education (14-19)	75	Power Electronics, Machines and Drives MSc	77
PGCE Secondary Science Biology	75	Primary Care MRes	101,118
PGCE Secondary Spanish	75	Primary Mental Health Care pathway APIMH MSc / PgDip / PGCert	103,109
Pharmaceutical Industrial Advanced Training PIAT MSc / PGDip	110	Probability PhD	99
Pharmacology MPhil / PhD	92	Prosthodontics MPhil / PhD	70
Pharmacy and Pharmaceutical Sciences MPhil / PhD	110	Process Integration MPhil / PhD	62
Philosophy MRes / PhD	111	Psychology MRes / MPhil / PhD	117
Photon Physics PhD	112	Psychology of Education MEd	75
Physical Chemistry MPhil / PhD	63	Psychosocial Interventions for Psychosis (COPE) pathway - APIMH	103,109
Physical Geography PhD	85	Public Health MPH / MRes / PGDip / PGCert	101,118
Physics and Chemistry of Minerals and Fluids MPhil / MSc by Research / PhD	72	Public International Law LL.M	90
Physiology MPhil / PhD	92	Pure Mathematics and Mathematical Logic MSc	98
Planning and Environmental Management PhD	113	Pure Mathematics PhD	99
Planning MSc	113		
Plant Sciences MSc / MPhil / PhD	92	Q	
Polish Studies MPhil / PhD	84	Quantitative Finance: Financial Engineering MSc	95
Political Economy MA / PGDip	116	Quantitative Finance: Risk Management MSc	95
Political Science (Ethics and Political Philosophy) MA	111,116		
Politics MA / PGDip / PhD	116	R	
Pollution and Environmental Control MSc	72	Real Estate Asset Management MSc	113
Polymer Materials Science and Engineering MSc	97	Real Estate Development MSc	113
Polymer Science and Engineering MPhil / MSc by Research / PhD	97	Reliability Engineering and Asset Management MSc	100
Portuguese Studies MPhil / PhD	84	Religions and Theology MA / PhD	119
		Religions and Theology (Biblical Studies)MA	119

SUBJECT	PAGE	SUBJECT	PAGE
Renewable Energy and Clean Technology MSc	77	T	
Restorative Dentistry MPhil / PhD	70	Teaching and Learning MA	75
Restorative and Aesthetic Dentistry MSc	69	Textile Technology (Technical Textiles) MSc / MSc by Research	97
Russian Studies MPhil / PhD	84	TESOL MA	75
		Theatre and Performance MA	71
S		Theoretical Chemistry MPhil / PhD	63
Science Ethics PhD	92	Theoretical Physics MSc by Research / PhD	112
Screenwriting MA	68,71	Thermal Power and Fluid Engineering MSc	100
Security and International Law MA / LLM	90	Tissue Engineering for Regenerative Medicine MRes	101
Skin Ageing and Aesthetic Medicine MSc / PGDip	101	Toxicology MPhil / PhD	92
Social Anthropology MA / PGDip / PhD	170	Translation and Interpreting Studies MA / PGDip	73,124
Social Research Methods and Statistics MSc / PGDip	121	Translation and Intercultural Studies MPhil / PhD	73,106,124
Social Statistics MPhil / PhD	121	Translational Medicine: Interdisciplinary Molecular Medicine MRes / PGCert	101
Social Work MA / MPhil / PhD	122	Transnational Dispute Resolution LLM	90
Sociology MA / MSc / PGDip / PhD	123		
Soft Matter and Liquid Crystals MSc by Research / PhD	112	U	
Spanish Studies MPhil / PhD	84	Urban Design and International Planning MSc	113
Speech and Language Therapy MPhil / PhD	61	Urban Regeneration and Development MSc	113
Statistics MSc / PhD	98		
Statistics (Financial Statistics) MSc	98	V	
Stem Cell Research MPhil / PhD	92	Visual Anthropology MA / MPhil / PhD	120
Structural and Petrological Geoscience MPhil / MSc by Research / PhD	72		
Structural Biology MPhil / PhD	92		
Structural Engineering MSc	64		
Systems Biology MPhil / PhD	62		
Systems Neuroscience MPhil / PhD	92		

CAMPUS MAP

- 63 Alan Gilbert Learning Commons
- 46 Alan Turing Building
- 76 AQA
- 36 Arthur Lewis Building
- 75 AV Hill Building
- 73 Avila House RC Chaplaincy
 - 9 Barnes Wallis Building
- 49 Beyer Building
- 27 Bowden Court
- 56 Burlington Rooms
- 88 Carys Bannister Building
 - 5 Chandos Hall
- 61 Chemistry Building
- 58 Christie Building
- 86 Core Technology Facility
- 43 Coupland Building 1
- 47 Coupland Building 3
- 31 Crawford House
- 33 Crawford House Lecture Theatres
- 87 Denmark Building
- 41 Dental School and Hospital
- 30 Devonshire House
- 70 Dover Street Building
- 62 Dryden Street Nursery
 - 6 Echoes Day Nursery
- 77 Ellen Wilkinson Building
- 64 Environmental Services Unit
 - 3 Fairfield Hall
- 20 Ferranti Building
- 17 George Begg Building
- 93 George Kenyon Building and Hall of Residence
- 24 Grosvenor Halls of Residence
- 83 Grove House
- 29 Harold Hankins Building
- 74 Holy Name Church
- 80 Horniman House
- 35 Humanities Bridgeford Street
- 40 Information Technology Building
- 89 James Chadwick Building
- 92 Jean McFarlane Building
- 16 John Garside Building
- 48 John Owens Building
- 39 Kilburn Building
 - 2 Lambert Hall
- 63 Learning Commons
- 55 Main Library
- 26 Manchester Business School East
- 29 Manchester Business School West
- 16 Manchester Institute of Biotechnology
- 44 Manchester Museum
- 65 Mansfield Cooper Building
- 42 Martin Harris Centre for Music and Drama
- 25 Materials Science Centre
- 91 McDougall Centre
- 71 Michael Smith Building
- 10 Moffat Building
- 15 Morton Laboratory
- 90 National Graphene Institute
- 23 Oddfellows Hall
- 85 Opal Hall
 - 7 Paper Science Building
- 12 Pariser Building
- 30 Precinct Shopping Centre
- 34 Prospect House
 - 8 Renold Building
- 28 Ronson Hall
- 53 Roscoe Building
- 45 Rutherford Building
 - 1 Sackville Street Building
- 67 Samuel Alexander Building
- 56 Schunck Building
- 54 Schuster Building
- 59 Simon Building
- 32 St Peter's House/Chaplaincy
- 13 Staff House/Manchester Meeting Place
- 66 Stephen Joseph Studio
- 79 Stopford Building
- 57 Student Services Centre
- 68 Students' Union
- 22 Sugden Sports Centre
- 78 The Academy
- 11 The Manchester Conference Centre
- 81 The Manchester Incubator Building
- 14 The Mill
- 37 University Place and Visitors Centre
- 38 Waterloo Place
 - 11 Weston Hall
- 84 Whitworth Art Gallery
- 51 Whitworth Building
- 50 Whitworth Hall
- 82 Whitworth Park Halls of Residence
- 69 William Kay House
- 52 Williamson Building
 - 9 Wright Robinson Hall
- 60 Zochonis Building



HOW TO GET HERE / CITY MAP

We take our social responsibility and relationships with the local community seriously and aim to reduce our impact on the environment. Therefore we encourage you to travel by sustainable means wherever feasible.

BY BUS

From Piccadilly Bus Station: 14, 16, 41, 42, 43, 44, 48, 111, 140, 142, 157 and 250.
www.tfgm.com/buses

BY RAIL

From Piccadilly Station: take the 147 bus, Mon-Fri, Bus Stop D, Fairfield Street.
 From Oxford Road Station: 15-minute walk from both North and South Campuses.
 From Victoria Station: University accessed by a combination of tram/bus/walking.
www.nationalrail.co.uk

FROM THE AIRPORT

Manchester Airport is approximately 10 miles south of the University. Frequent trains and the 43 and 44 bus services serve Manchester (see above websites). A taxi fare is approximately £30.

CYCLING

www.tfgm.com/cycling

WALKING

www.walkit.com/cities/manchester

BY CAR

All directions listed are to the Visitors Centre in University Place (building 37 on the campus map). For satnav, use M1 3BB for North Campus and M13 9PL for South Campus. For information on car parking, visit www.estates.manchester.ac.uk/services/operational-services/carparking

BY ROAD

All approach routes are clearly signposted 'Universities'.

M62 (Eastbound), M602

Leave the M62 at J12 and join the M602. At the end of the M602 join Regent Road (A57) and continue along and join the A57M (Mancunian Way). Leave at the second exit, signposted A34 (hair-pin bend). To go to Sackville Street, keep right. To go to Oxford Road, keep left and join the A34 (dual carriageway) and get in the

right-hand lane. Turn right at the first set of traffic lights into Grosvenor Street. Stay in the left-hand lane and turn left at the next set of traffic lights on to Oxford Road (B5117).

Go straight on through the next set of traffic lights and our Visitors Centre is on the left-hand side in University Place (building 37 on the campus map).

M62 (Westbound), M60

Leave M62 at J18 and join M60 ring road. Leave M60 at J22 and turn right at traffic lights on to Oldham Road (A62). Continue along until the end and turn left to join Great Ancoats Street (A665). Follow signs for the Universities and join the Mancunian Way (A57M). Leave at the second exit on to Higher Cambridge Street. Turn left at the next set of traffic lights on to Booth Street West. Continue to the next set of traffic lights and turn right.

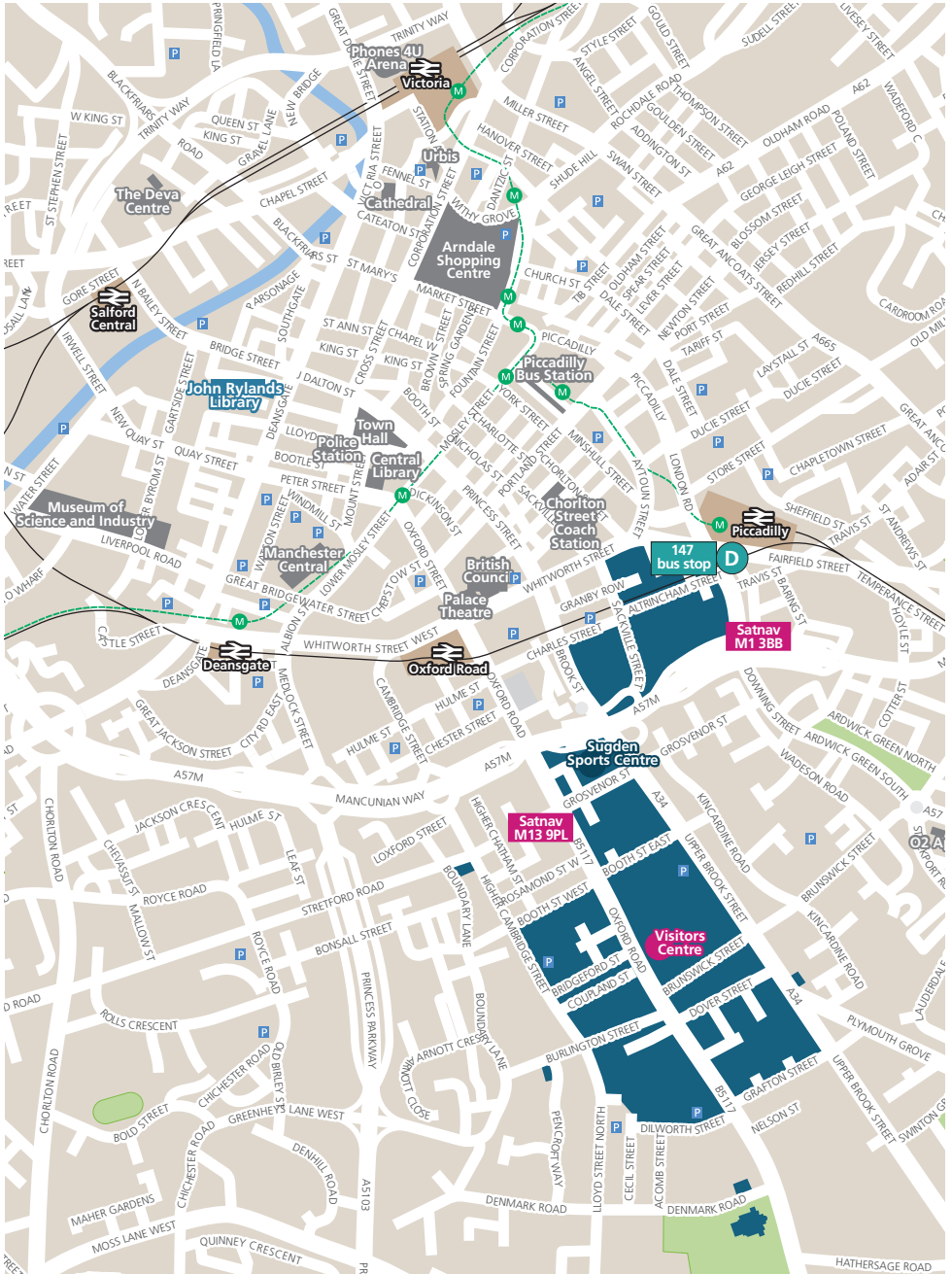
Our Visitors Centre is on the left-hand side in University Place, (building 37 on the campus map).

M6/M56

Leave the M6 at Junction 19 and turn right on to the A556. Follow signs for Manchester Airport and join the M56. Stay on M56 until it joins Princess Parkway (A5103). Continue for a further four miles (seven kilometres) before turning right at the Royal Brewery into Moss Lane East (B5219). Continue to the T-junction and turn left on to Oxford Road (B5117). Proceed down Oxford Road past the hospitals and the Holy Name Church on the right-hand side. Our Visitors Centre is on the right-hand side in University Place (building 37 on the campus map).

From M67

At the end of the motorway join Hyde Road (A57). Continue along for approximately three miles (five kilometres), following signs for the city centre. Upon reaching a major roundabout (the O2 Apollo is on the left) take the second exit, Brunswick Street (signposted 'Universities'). Continue along and go straight through the next set of traffic lights. Continue to the T-junction and turn right on to Oxford Road (B5117). Our Visitors Centre is on the right-hand side in University Place (building 37 on the campus map).



The University of Manchester
Oxford Road
Manchester
M13 9PL
United Kingdom

www.manchester.ac.uk



/AdmissionsUoM



@AdmissionsUoM

Royal Charter Number RC000797
M1053 07.14



When you have finished with
this publication please recycle it

