

# Choosing a University Course Workshop

# You

Tell the person next to you:

- 1) What subjects are you studying at A-level?
- 2) Why did you choose these subjects?
- 3) Which subject(s) do you enjoy the most?
- 4) Are these subjects what you expected them to be like when you chose them?

# Choosing

*We make choices every day. Some are small, like what to have for breakfast, some are a little bigger, such as do I buy the iPhone or not. Some choices can be life changing, and whether to go to university and what to study is one of those.*

Over 340 HE  
institutions

&

40,000 HE courses  
to choose from



**There are so many things to consider.....**

- 1) Why do I want to go to university?**
- 2) What course would I like to study?**
- 3) What course options are available to me?**
- 4) Where would I like to live?**
- 5) What are the entry requirements for the courses I am interested in?**
- 6) What career would I like to pursue after my degree?**
- 7) Does it matter what I study for my career options afterwards?**
- 8) What skills do I want to gain from my degree?**

And Finally... WHEN am I going to research and decide on all of the above??

# Exploring Course Options

## Exploring Subject Areas

If someone was studying or was interested in any of these subjects, which courses might they think about pursuing at university??

**Biology**

**History**

**Maths**

**English**

**Economics**

## Exploring subject areas

**So which courses did you think of ??**

**Did you come across a related course in the prospectus that surprised you?**



## Exploring transferable skills

Swap your flipchart paper with the table next to you:

**What skills might you need to do this degree and what skills might you gain from doing a degree like this?**

**List as many as you can!**

**UCAS Entry Profiles: [www.ucas.com](http://www.ucas.com)**

## Exploring Career Options

Swap your flipchart paper with the table next to you:

**Which careers might you progress in to if you if completed a degree in this subject or a related subject area?**

**List as many as you can think of!**

## Course Information

- Look at the module options you can take in Years 1, 2 and 3.
- Look at the career paths some of these graduates have pursued

## Exploring Course/Career Options

**Do any of the modules available surprise you?**

**Do any of the career paths students have pursued after these degree programmes surprise you?**

## Does the course I study matter?

- For certain careers - Yes
- Around 66% of graduate jobs advertised every year ask for students with a degree in any discipline
- Transferable skills you gain at university are more important for these employers
- Some careers can be accessed with postgraduate study after any undergraduate

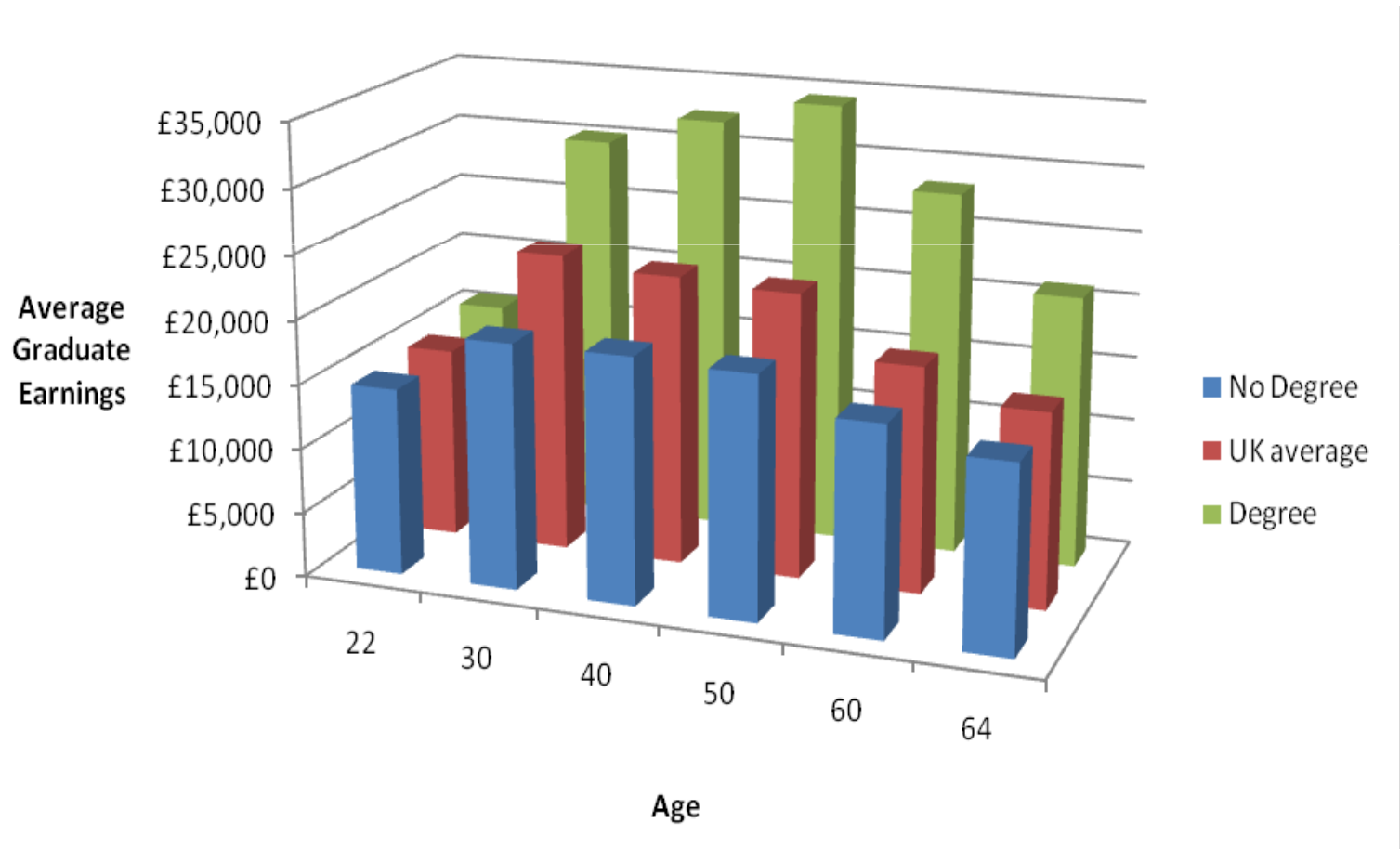


## How much can I earn?

Salaries vary by occupation, location, type of company and skills and experience of the applicant...NOT DEGREE!

- Average **graduate** starting salary in 2009\* was £19,695 (DLHE), £25,000(AGR)
- AGR members predict an increase of 4% for the 2011/12 recruitment season to £26,000.
- People with degrees earned £12,000 a year (on average) more than non-graduates over the past decade.\*\*  
\*\* *Office for National Statistics*
- According to *the Labour Force Survey*, for the period July to Sept 2011, the **median** salary for adults with a degree or equivalent qualification was £30,524

# Graduate Earning Potential



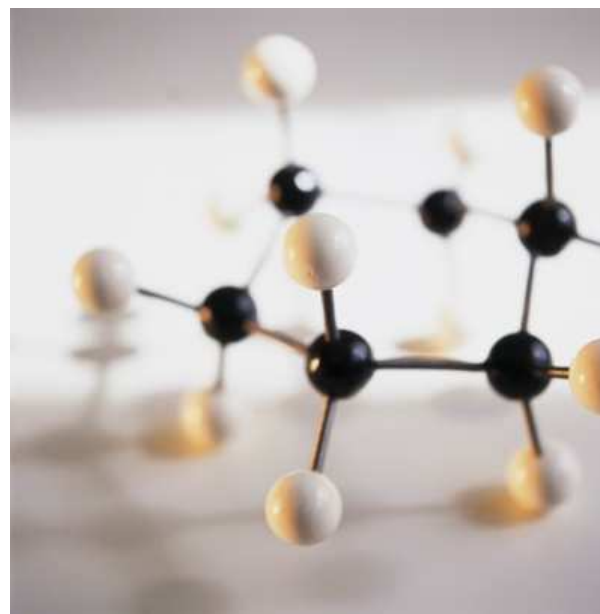
# Guess Which Degree!



# Which Degree?

- Analytical Chemist
- Clinical Biochemist
- Forensic Scientist
- Research Scientist
- Chemical Development Engineer
- Scientific Journalist
- Toxicologist
- Process Engineer
- Patent Attorney
- Environmental Consultant
- Quality Control Analyst
- IT Field Engineer
- Development Chemist
- Trainee Retail Manager
- Trainee Accountant
- Scientific Analyst
- PGCE Primary and Secondary
- Masters in Chemistry
- Masters in Pollution and Environmental Control
- PhD Research student

# CHEMISTRY

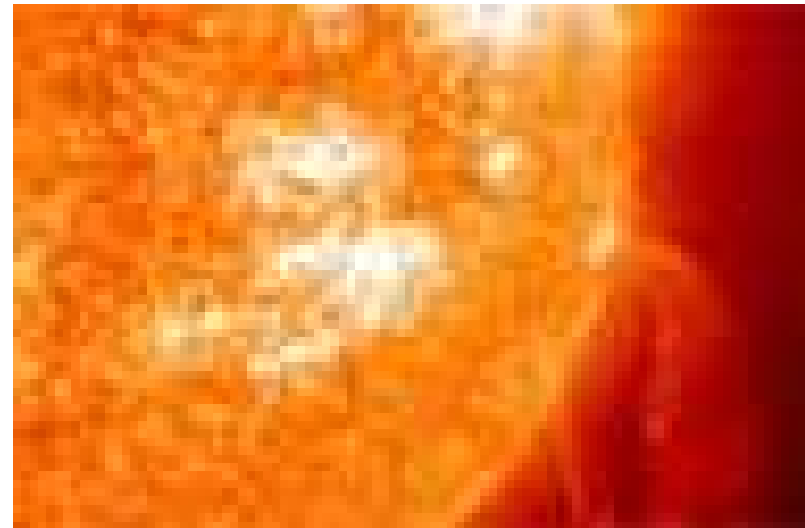


# Which Degree?



- Geoscientist
- Wellsite Geologist
- Hydrogeologist
- Seismic Interpreter
- Mudlogger
- Geochemist
- Engineering Geologist
- Geological Mapper
- Geophysicist/field Seismologist
- Petroleum Engineering
- Minerals Surveyor
- Geophysical Data Processor
- Drilling Engineer
- Environmental Consultant
- Countryside Manager
- Environmental Manager
- Recycling Officer
- Water Quality Scientist

# Earth, Atmospheric and Environmental Sciences



# Which Degree?



- IT Consultant
- IT Field Engineer
- Information Systems Manager
- Applications Developer
- Systems Analyst
- Network Engineer
- IT Sales Professional
- IT Trainer
- Business Consultant
- Technical Author
- IT Support
- Teacher
- PGCE Primary and Secondary
- Masters in Informatics
- Masters in Information Systems: Organisation and Management

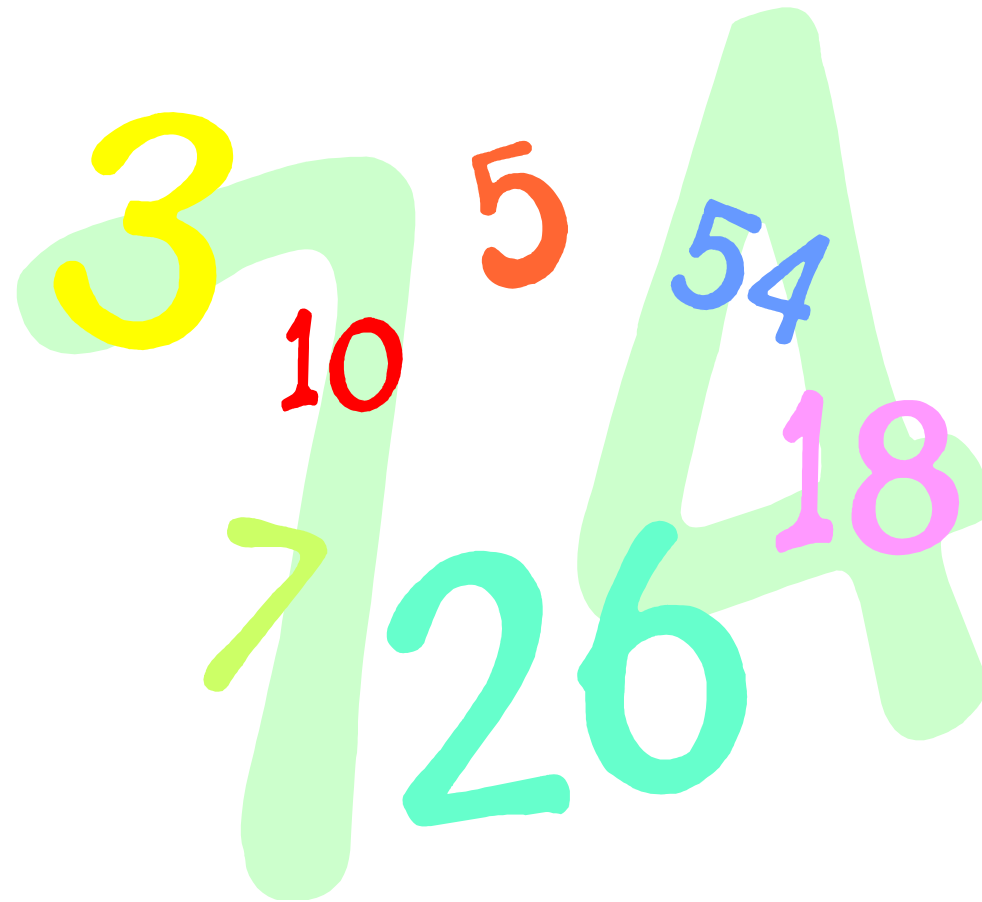
# Information Systems



# Which Degree?

- Trainee Accountant
- Trainee Teacher
- Actuarial Trainee
- Tax Associate
- Risk Analyst
- Property Investment Manager
- Portfolio Modelling Analyst
- Trainee Health Economist
- Charity Worker
- Data Analyst
- Charity Worker
- MSc Actuarial Science
- PGCE Secondary
- Graduate Law Conversion course

# Maths



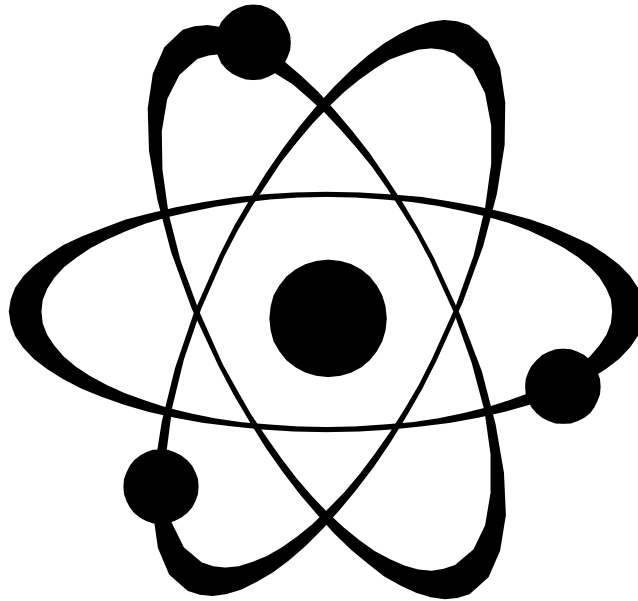


# Which Degree?



- Trainee Assistant Manager (Retail)
- Associate Accountant
- Project Manager
- Royal Marines
- Logistics Manager
- Recruitment Consultant
- Graduate Trainee
- Trainee Accountant
- Graduate Nuclear Engineer
- Project Researcher
- Graduate Teacher
- PGCE Secondary
- Journalism for Science
- MSc Photon Science

# Physics

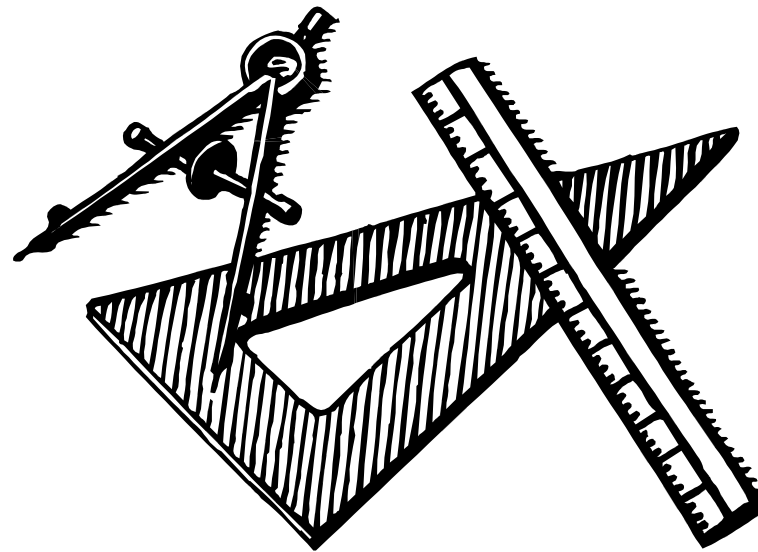


# Which Degree?



- Graduate Engineer
- Graduate Trainee
- Analyst (Investment Banking)
- Project Engineer
- Process Engineer
- CAD Designer
- Project Manager
- Consultant
- Financial Analyst
- Design Engineer
- PhD Engineering

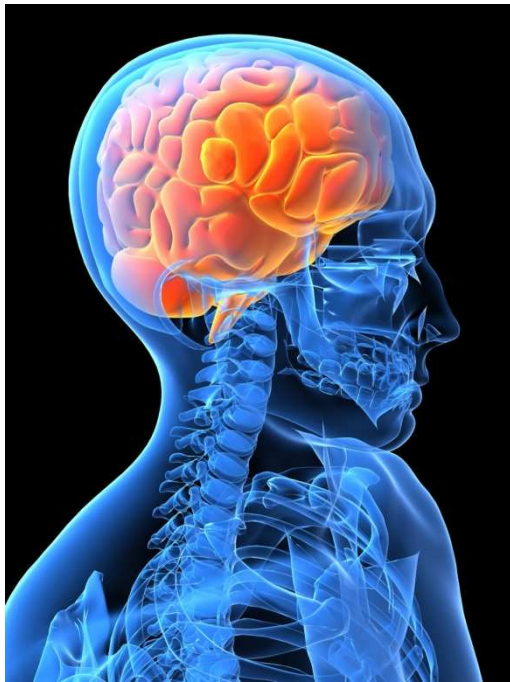
# Engineering (Various)



# Which Degree?

- Trainee Psychologist
- HR Officer
- Psychology Assistant
- Care Worker
- Accounting Adviser
- Graduate Trainee
- PR Executive
- Teaching Assistant
- Advertising Planner
- Assistant Forensic Psychologist
- Mental Health Support Worker
- Recruitment Consultant
- Events Supervisor
- Assistant Behavioural Analyst
- Social Inclusion Worker
- Learning Mentor
- PGCE – Primary Teaching
- PGCE – Secondary Teaching
- Volunteer Development Worker
- Research Assistant

# Psychology

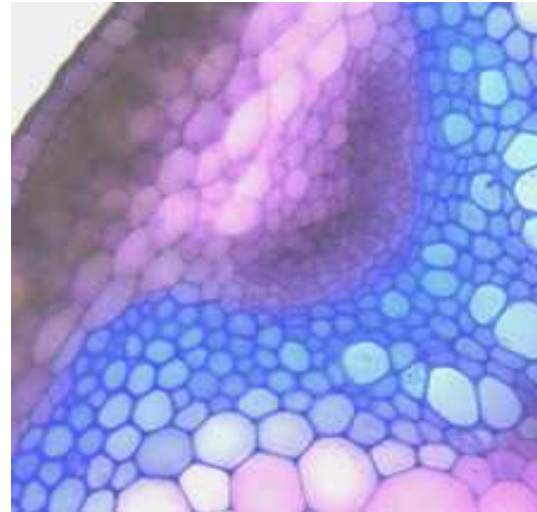


Psychology

# Which Degree?

- University Research Assistant
- Scientific Officer
- IT Analyst
- Medical Lab Assistant
- Teaching Assistant
- Healthcare Team Manager
- Scientific Sales
- Research Technician
- Medical Writer
- Trainee Clinical Scientist
- Business Development Consultant
- Medicine Degree
- PGCE – Primary Education
- PGCE – Secondary Education
- PhD Biology

# Life Sciences





# Medical and Human Sciences



- Many of the degree programmes in the Faculty of Medical and Human Sciences are **vocational**.
- These courses prepare students to enter a career in Medicine and related health areas
- The following slide highlights some of the careers open to you from these subjects\*

# Medical and Human Sciences

- Staff Nurse
- Dentist
- Speech and Language Therapist
- Mental Health Nurse
- Junior Doctor
- Audiologist
- Optician
- Optometrist
- Hospital Pharmacist
- Community Pharmacist
- Midwife
- District Nurse
- NHS Manager
- MSc International Health
- Medical Research
- Paediatric Nurse

Researching the courses  
you are interested in.

# Researching

Has anyone started researching courses yet?

Where is the best place to start?

What resources will you use?

## What resources can you use to gather information?

- **University literature**

- Prospectuses: Subjects specific prospectuses for a particular course (Life Sciences) Accommodation Guides, Pocket Guides and much more!

- **Websites**

- UCAS
  - Universities
  - Whatuni.com, push.co.uk, unistats.direct.gov.uk
  - Social networks/ Youtube

- **Visits**

- Open Days
  - Campus tours

## Higher Education Conventions

Has anyone been to a HEC yet?

### Have a plan!

- Which university stands do I want to visit?
- What do I want to find out?
- In your own time, list some of the things you want to find out!

## Open Days

Has anyone been to an Open Day yet?

**Make time for Open Days!**

- Get a feel for the place
- Speak to current students and staff
- Find out more about entry requirements

**Schedule in time now to attend Open Days!**

## The University of Manchester Open Days

Our Open Days this year are:

**Friday 22 June**

**Saturday 23 June**

**Saturday 6 October**

<http://www.manchester.ac.uk/undergraduate/opendays/>

**There will be a MAP drop-in session at each Open Day.**



# Choosing a University.

The University  
of Manchester

MANCHESTER  
1824

Manchester  
Access Programme

# Where to study?

Location

Do they  
do your  
course

Home or  
away

Cost of  
living

Part  
job

Academic  
reputation

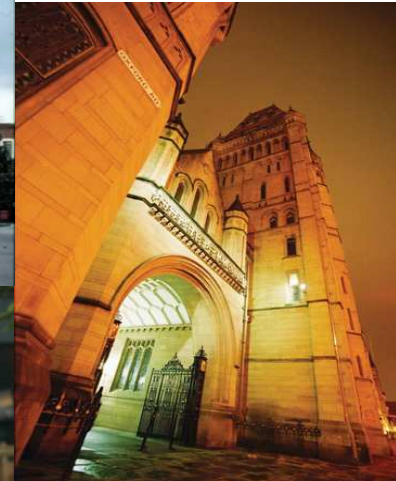
Transport

Campus  
or City

Student  
Life

Sports  
facilities

Accommodation



## What matters to you?

## Choosing a University

**Individually list all of the Universities you think you might be interested in studying at**

**Also think about and list WHY??**

## Keeping your options open.....

**You have 5 choices on your UCAS application.**

**Research a University you have not previously considered**

**How about a wild card?**

Which of these universities has the most number of 'likes' on Facebook?

Aberystwyth

Leeds

Manchester

Hertfordshire

Which university was the first  
in the UK to admit female  
students?

Oxford

Cambridge

University College London (UCL)

Birmingham

Which UK University has the largest  
Student Union in Europe?

Sheffield

Manchester

Newcastle

Swansea

Which university achieve the highest overall score in the most recent Times Higher Education Student Satisfaction Survey?

University of Dundee

University of Loughborough

University of Oxford

University of Sheffield



# Comparing the same course at different universities

## Comparing the same course at different universities

Think about the course you are interested in studying and using the prospectuses, compare this course at 2 different institutions.....

Are the entry requirements the same?

Does the content look similar?

Is there an opportunity to study abroad as part of the degree at either University?

Is there an opportunity to have a year in industry at either University?

What do graduates of this course go on to do afterwards?

# Which course to choose?

Not all courses are the same

## Drama W400

- Aberystwyth University – Set design
- Bath Spa University – Comedy
- The University of Manchester – Art of Film
- University of Winchester – Shakespeare and ideology

# Understanding University League tables

## University League Tables

**Many different league tables**

**Look at a range of things:**

- **Facilities (teaching, sport, social)**
- **Courses**
- **Teaching quality**
- **Connections with industry**
- **Accommodation**
- **Social Life**

## University League Tables

### **Times Higher Education Student Experience Survey**

[http://www.timeshighereducation.co.uk/Journals/THE/THE/26\\_April\\_2012/attachments/THE\\_Student\\_Experience\\_Survey.pdf](http://www.timeshighereducation.co.uk/Journals/THE/THE/26_April_2012/attachments/THE_Student_Experience_Survey.pdf)

### **The Guardian University Guide**

<http://www.guardian.co.uk/education/universityguide>

### **UniStats**

<http://unistats.direct.gov.uk/>

**Search, review and compare subjects at UK universities and colleges**

# Time Management

When am I going to do  
it all?

## Action Plan

**May:** Research choices, Plan which Open Days to attend , Try and organise any work experience you might need for your course

**June:** Attend Open Days

**July:** Attend Open Days

**August:** Undertake any work experience, start personal statement

**September:** Make final course decisions

**September – December:** Apply through UCAS before the deadline



# Why go to university?

- Gain specific qualifications
  - Increase your earning potential
  - Acquire transferrable skills
- The student experience
  - Gain independence
  - Meet new people
  - Live somewhere different



What I wish I had known.....!!

**Finally.....**

**What will I do now as a result of  
this workshop?**

**List 1 or 2 things that you will do  
now.**

# Any Questions?

# Summer 2012 Discover Days

- Gain hands-on experience of subjects you'd like to apply to study
- Sign up NOW at [www.manchester.ac.uk/discoverdays](http://www.manchester.ac.uk/discoverdays)

**Discover...** **Social Anthropology** 26 June / **Engineering** 27 June / **History** 27 June / **Law** 28 June / **English** 29 June

~~**Chemistry** 2 July~~ *now fully booked /*

~~**Midwifery** 5 July~~ *now fully booked /* **Biomedical Sciences I** 10 July

(**Neuroscience, Pharmacology, Physiology and Anatomy**)

*Discover Biomed Sci I is now fully booked, a few reserve places may be available /* **Biomedical Science II** 11 July (**Immunology, Microbiology and Molecular Biology**) / **Nursing** 11 July